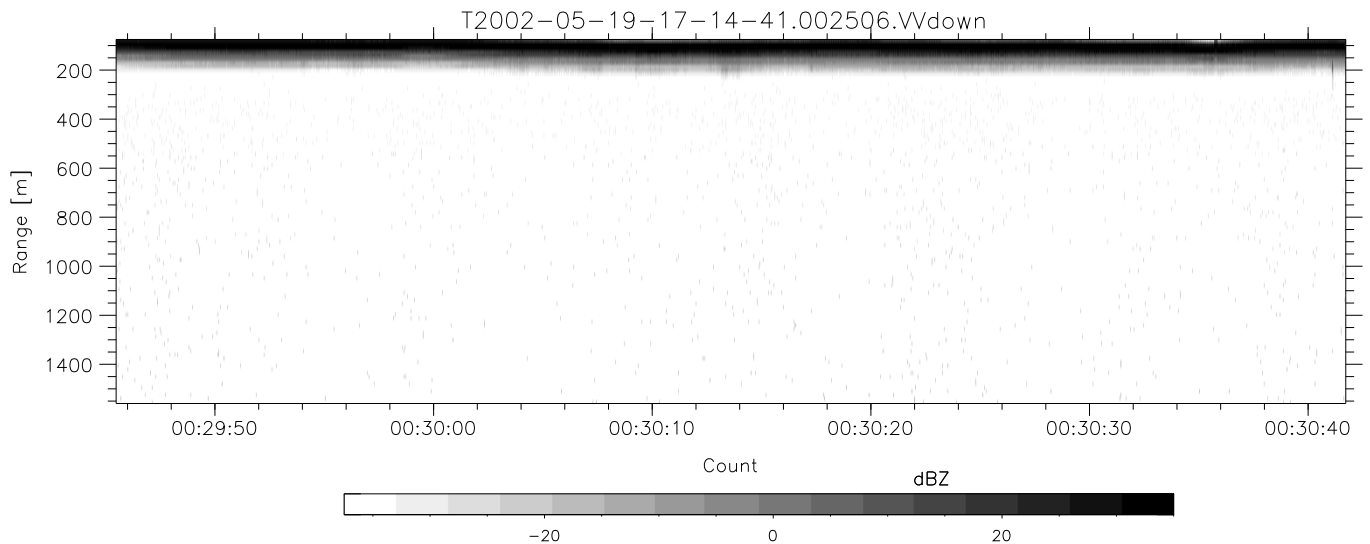
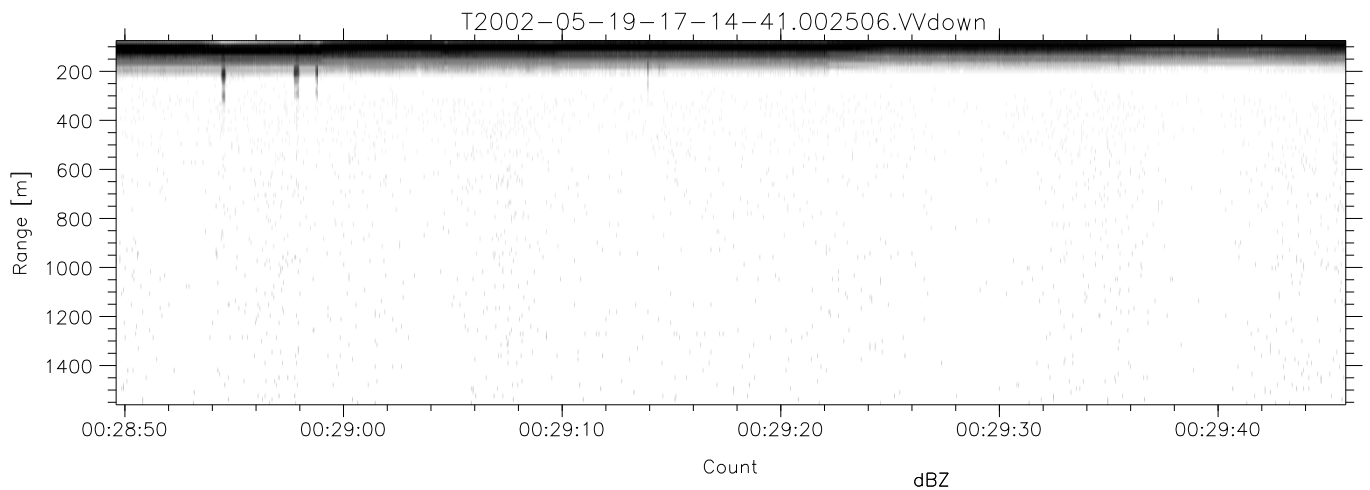
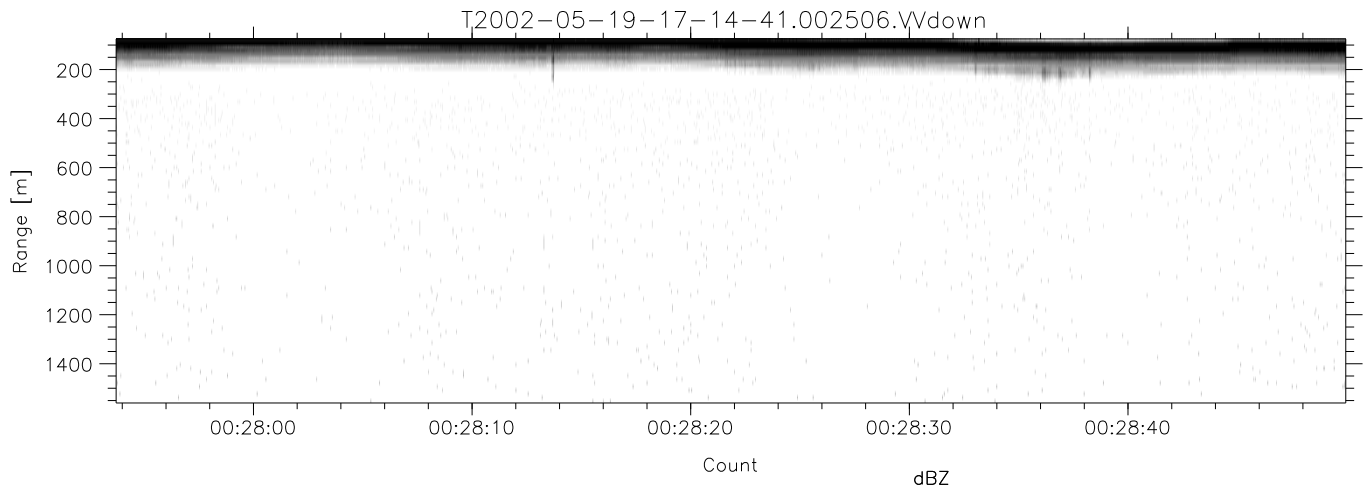


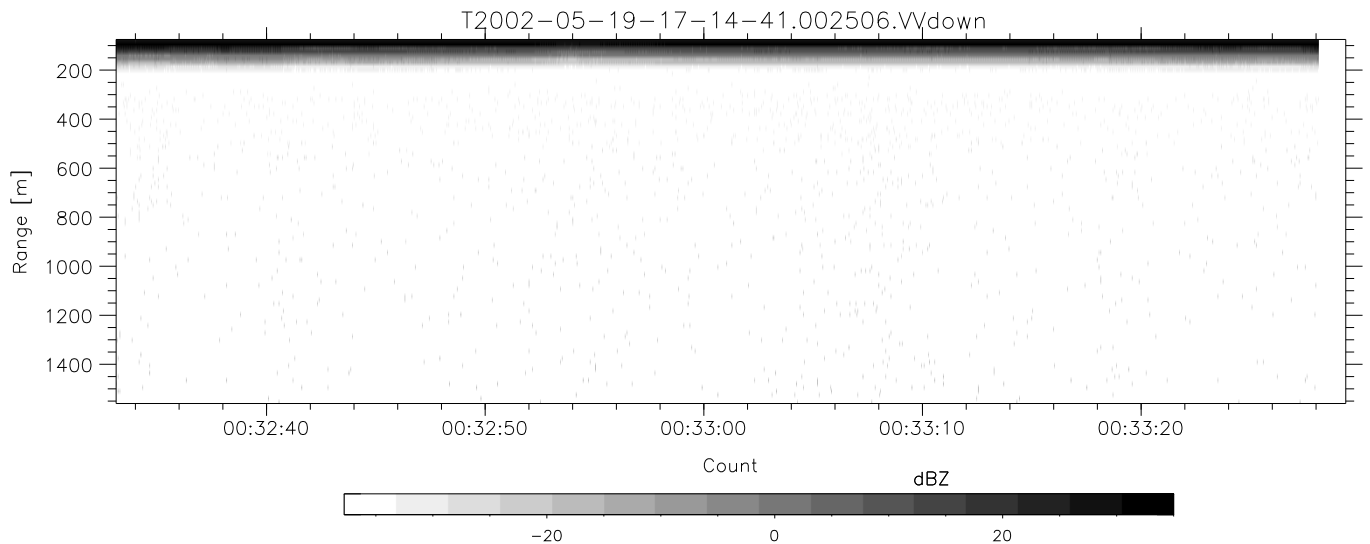
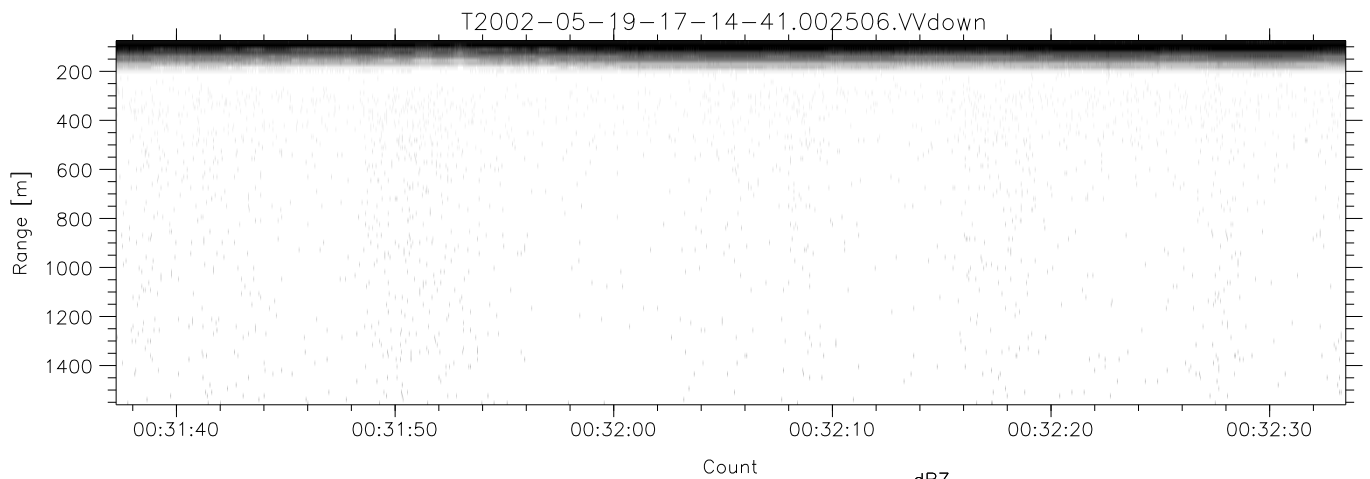
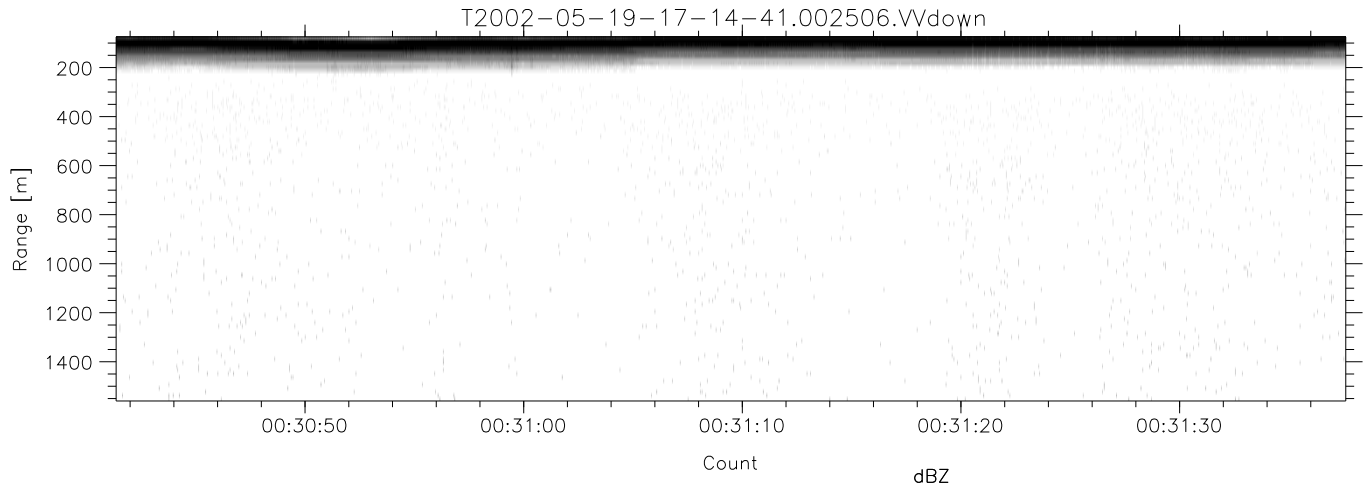
IHOP 2002 (dual-antenna config, modes 1,3,4,7) Data (cal: 49.0,50.0)

T2002-05-19-17-14-41 - PPMAG4	Min	Max	Mean	Std	Varc%	
IRIG:-2,Count: 00:00:00.0 to 02:28:29.64, Dur: 8909s	hhN(dB)	-67.54	-63.75	-65.85	-75.90	9.9
TimeLngth: 8909.64s, TimeInt: 40ms (25.0pps)	vvN(dB)	-68.22	-64.68	-66.45	-76.45	10.0
TimeCor=0.0s, DSPDif[ms]: mn=40,mx-min=0	hhL(dB)	-32.45	-12.70	-18.34	-21.56	47.7
PPS(min,max,std): 25,25,0.00	vvL(dB)	-32.91	-15.94	-22.24	-25.42	48.1
Prof: 192 to 222934, NumProf(t/r): 222742/12551	ppN(m/s)	-12.09	12.63	0.01	4.16	
ProcTime/Recs: 00:25:06-00:33:28/37653-50203	ppT(m/s)	-95.47	99.79	0.10	32.89	
MxACQtime: 33ms; DRate: 139.9KB/s; Flags: 0, 0, 1	hh/vv(dB)	-NaN	61.06	-NaN	52.12	-355
Pulse: 275ns, IFfilt: 5.0MHz; ppPol: HH HV VV	vh/hh(dB)	-61.71	-2.32	-12.92	-9.82	203.
TxPol: HHVV, PRF: 20 10 20 10 kHz	hv/vv(dB)	-NaN	-18.32	-35.18	-34.52	116.
Range: Delay 75m, Spacing 15m, Gates 100	hnjmp(dB)	-1.90	2.33	0.16	-8.44	13.8
Ave. Pulses: 84, Rng/Prof Aspect@90m/s: 4.2	vnjmp(dB)	-2.51	2.30	0.17	-8.33	14.1



IHOP 2002 (dual-antenna config, modes 1,3,4,7) Data (cal: 49.0,50.0)

T2002-05-19-17-14-41 - PPMAG4	Min	Max	Mean	Std	Varc%	
IRIG:-2,Count: 00:00:00.0 to 02:28:29.64, Dur: 8909s	hhN(dB)	-67.54	-63.75	-65.85	-75.90	9.9
TimeLngth: 8909.64s, TimeInt: 40ms (25.0pps)	vvN(dB)	-68.22	-64.68	-66.45	-76.45	10.0
TimeCor=0.0s, DSPDif[ms]: mn=40,mx-min=0	hhL(dB)	-32.45	-12.70	-18.34	-21.56	47.7
PPS(min,max,std): 25,25,0.00	vvL(dB)	-32.91	-15.94	-22.24	-25.42	48.1
Prof: 192 to 222934, NumProf(t/r): 222742/12551	ppN(m/s)	-12.09	12.63	0.01	4.16	
ProcTime/Recs: 00:25:06-00:33:28/37653-50203	ppT(m/s)	-95.47	99.79	0.10	32.89	
MxAcQtime: 33ms; DRate: 139.9KB/s; Flags: 0, 0, 1	hh/vv(dB)	-NaN	61.06	-NaN	52.12	-355
Pulse: 275ns, IFfilt: 5.0MHz; ppPol: HH HV VV	vh/hh(dB)	-61.71	-2.32	-12.92	-9.82	203.
TxPol: HHVV, PRF: 20 10 20 10 kHz	hv/vv(dB)	-NaN	-18.32	-35.18	-34.52	116.
Range: Delay 75m, Spacing 15m, Gates 100	hnjmp(dB)	-1.90	2.33	0.16	-8.44	13.8
Ave. Pulses: 84, Rng/Prof Aspect@90m/s: 4.2	vnjmp(dB)	-2.51	2.30	0.17	-8.33	14.1



IHOP 2002 (dual-antenna config, modes 1,3,4,7) Data (cal: 49.0,50.0)

T2002-05-19-17-14-41 - PPMAG4	Min	Max	Mean	Std	Varc%	
IRIG:-2,Count: 00:00:00.0 to 02:28:29.64, Dur: 8909s	hhN(dB)	-67.54	-63.75	-65.85	-75.90	9.9
TimeLngth: 8909.64s, TimeInt: 40ms (25.0pps)	vvN(dB)	-68.22	-64.68	-66.45	-76.45	10.0
TimeCor=0.0s, DSPDif[ms]: mn=40,mx-min=0	hhL(dB)	-32.45	-12.70	-18.34	-21.56	47.7
PPS(min,max,std): 25,25,0.00	vvL(dB)	-32.91	-15.94	-22.24	-25.42	48.1
Prof: 192 to 222934, NumProf(t/r): 222742/12551	ppN(m/s)	-12.09	12.63	0.01	4.16	
ProcTime/Recs: 00:25:06-00:33:28/37653-50203	ppT(m/s)	-95.47	99.79	0.10	32.89	
MxACQtime: 33ms; DRate: 139.9KB/s; Flags: 0, 0, 1	hh/vv(dB)	-NaN	61.06	-NaN	52.12	-355
Pulse: 275ns, IFfilt: 5.0MHz; ppPol: HH HV VV	vh/hh(dB)	-61.71	-2.32	-12.92	-9.82	203.
TxPol: HHVV, PRF: 20 10 20 10 kHz	hv/vv(dB)	-NaN	-18.32	-35.18	-34.52	116.
Range: Delay 75m, Spacing 15m, Gates 100	hn/jmp(dB)	-1.90	2.33	0.16	-8.44	13.8
Ave. Pulses: 84, Rng/Prof Aspect@90m/s: 4.2	vn/jmp(dB)	-2.51	2.30	0.17	-8.33	14.1