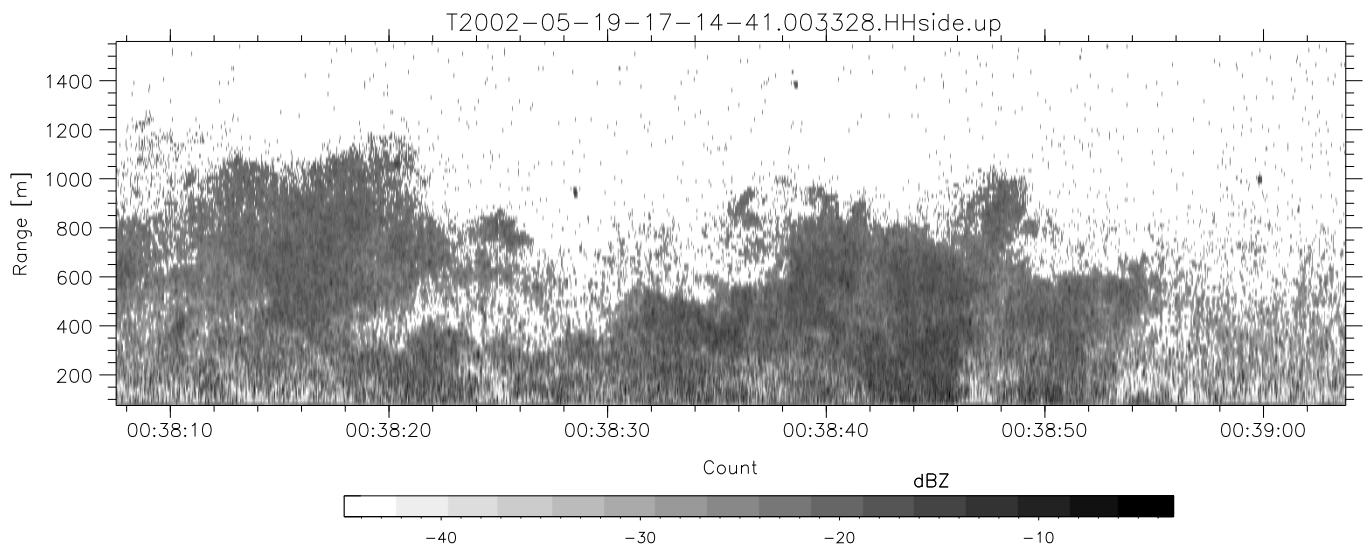
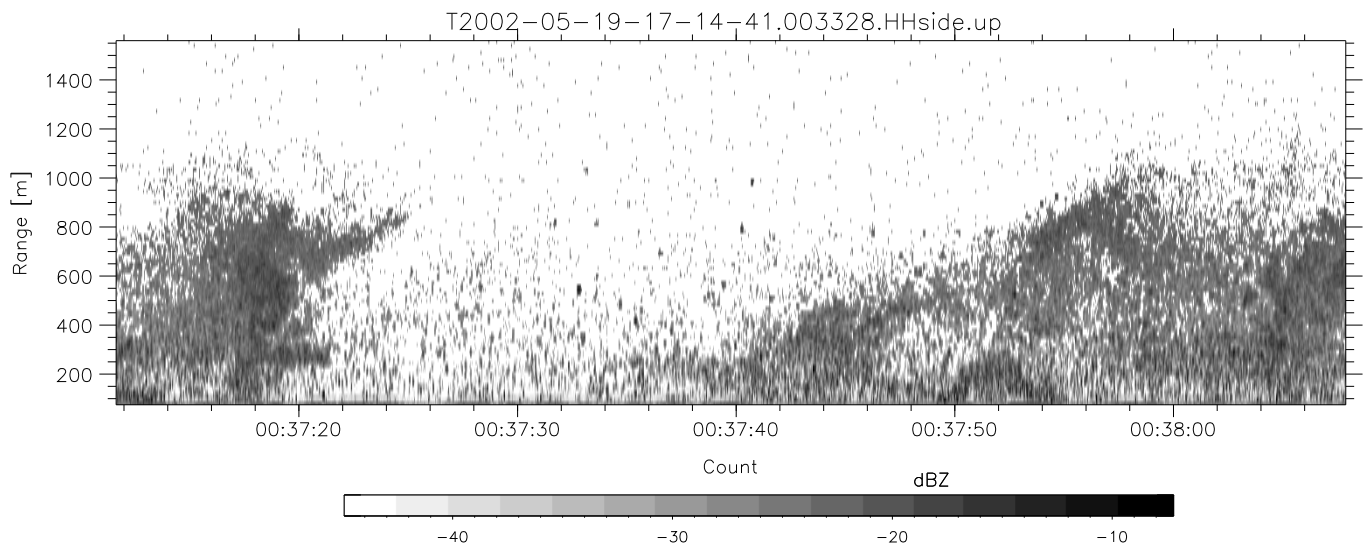
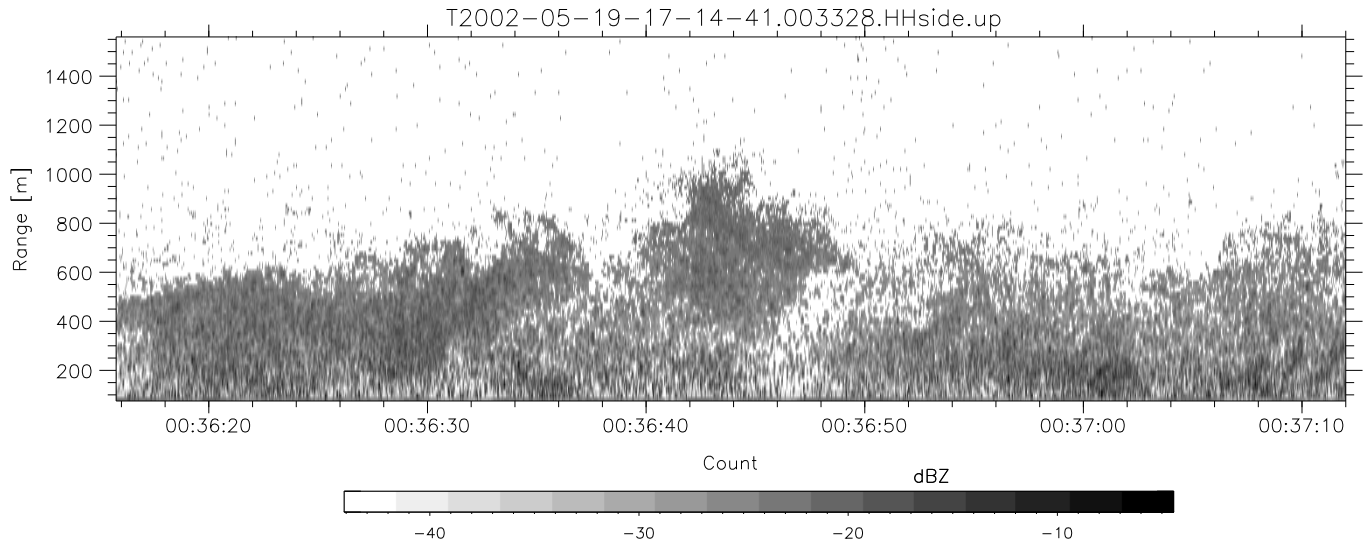


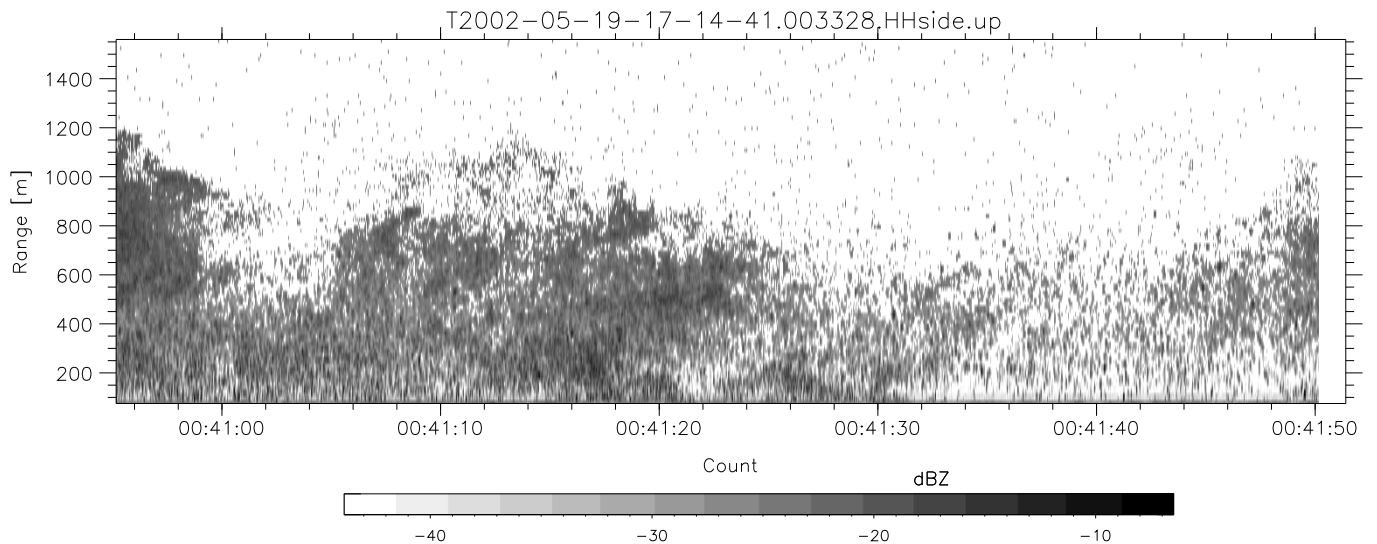
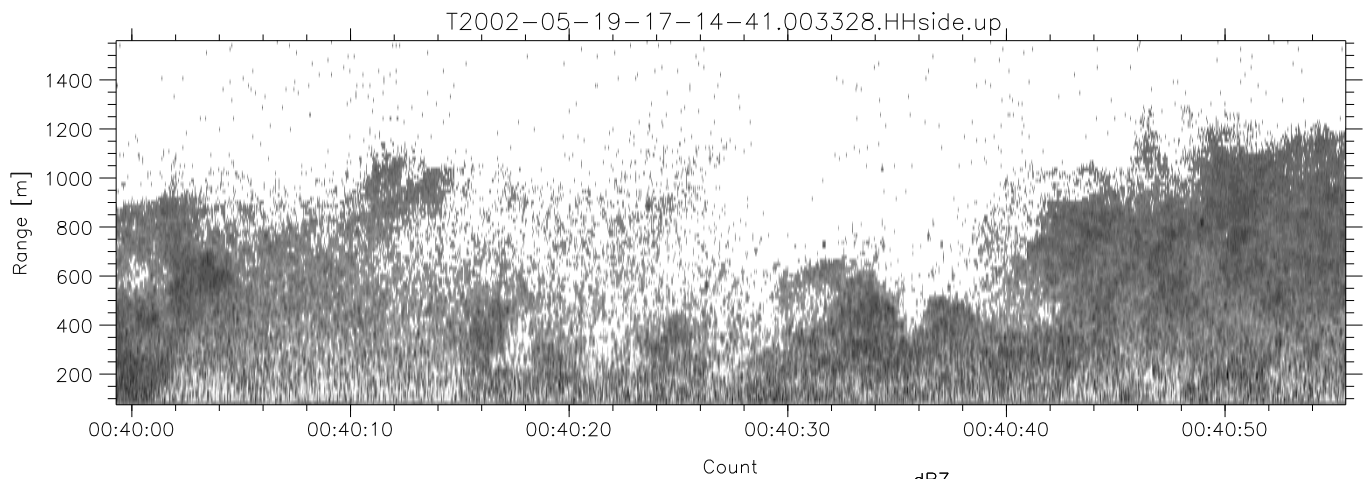
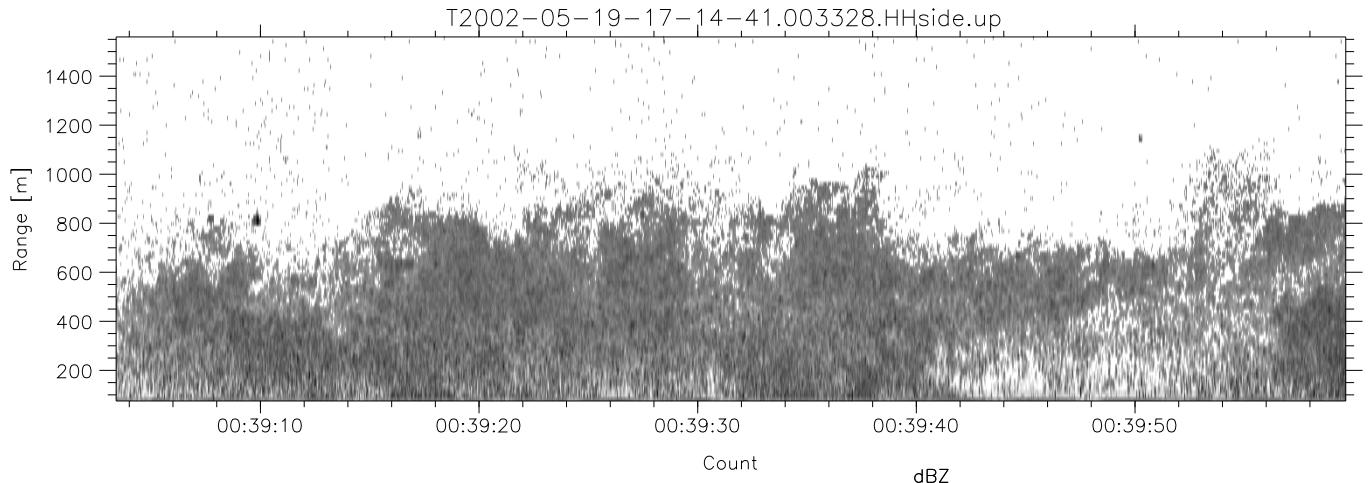
IHOP 2002 (dual-antenna config, modes 1,3,4,7) Data (cal: 49.0,50.0)

T2002-05-19-17-14-41 - PPMAG4	Min	Max	Mean	Std	Varc%	
IRIG:-2,Count: 00:00:00.0 to 02:28:29.64, Dur: 8909s	hhN (dB)	-67.83	-64.03	-65.94	-75.99	9.9
TimeLngth: 8909.64s, TimeInt: 40ms (25.0pps)	vvN (dB)	-68.27	-65.03	-66.53	-76.55	10.0
TimeCor=0.0s, DSPDif[ms]: mn=40,mx-min=0	hhL (dB)	-33.59	-11.48	-18.46	-20.61	60.9
PPS(min,max,std): 25,25,0.00	vvL (dB)	-38.13	-12.40	-22.48	-25.12	54.4
Prof: 192 to 222934, NumProf(t/r): 222742/12551	ppN (m/s)	-12.89	12.82	-0.03	4.16	
ProcTime/Recs: 00:33:28-00:41:50/50204-62754	ppT (m/s)	-101.8	101.25	-0.25	32.84	
MxACQtime: 33ms; DRate: 139.9KB/s; Flags: 0, 0, 1	hh/vv (dB)	-NaN	60.56	16.26	38.06	1513
Pulse: 275ns, IFfilt: 5.0MHz; ppPol: HH HV VV	vh/hh (dB)	-NaN	-2.38	-13.82	-9.09	296.
TxPol: HHVV, PRF: 20 10 20 10 kHz	hv/vv (dB)	-NaN	-14.42	-35.72	-29.45	424.
Range: Delay 75m, Spacing 15m, Gates 100	hn_jmp (dB)	-2.21	2.20	-0.09	-8.66	13.9
Ave. Pulses: 84, Rng/Prof Aspect@90m/s: 4.2	vn_jmp (dB)	-2.41	2.50	-0.08	-8.62	14.0



IHOP 2002 (dual-antenna config, modes 1,3,4,7) Data (cal: 49.0,50.0)

	Min	Max	Mean	Std	Varc%	
T2002-05-19-17-14-41 - PPMAG4						
IRIG:-2,Count: 00:00:00.0 to 02:28:29.64, Dur: 8909s	hhN (dB)	-67.83	-64.03	-65.94	-75.99	9.9
TimeLngth: 8909.64s, TimeInt: 40ms (25.0pps)	vvN (dB)	-68.27	-65.03	-66.53	-76.55	10.0
TimeCor=0.0s, DSPDif[ms]: mn=40,mx-min=0	hhL (dB)	-33.59	-11.48	-18.46	-20.61	60.9
PPS(min,max,std): 25,25,0.00	vvL (dB)	-38.13	-12.40	-22.48	-25.12	54.4
Prof: 192 to 222934, NumProf(t/r): 222742/12551	ppN (m/s)	-12.89	12.82	-0.03	4.16	
ProcTime/Recs: 00:33:28-00:41:50/50204-62754	ppT (m/s)	-101.8	101.25	-0.25	32.84	
MxACQtime: 33ms; DRate: 139.9KB/s; Flags: 0, 0, 1	hh/vv (dB)	-NaN	60.56	16.26	38.06	1513
Pulse: 275ns, IFfilt: 5.0MHz; ppPol: HH HV VV	vh/hh (dB)	-NaN	-2.38	-13.82	-9.09	296.
TxPol: HHVV, PRF: 20 10 20 10 kHz	hv/vv (dB)	-NaN	-14.42	-35.72	-29.45	424.
Range: Delay 75m, Spacing 15m, Gates 100	hn_jmp (dB)	-2.21	2.20	-0.09	-8.66	13.9
Ave. Pulses: 84, Rng/Prof Aspect@90m/s: 4.2	vn_jmp (dB)	-2.41	2.50	-0.08	-8.62	14.0



IHOP 2002 (dual-antenna config, modes 1,3,4,7) Data (cal: 49.0,50.0)

T2002-05-19-17-14-41 - PPMAG4	Min	Max	Mean	Std	Varc%	
IRIG:-2,Count: 00:00:00.0 to 02:28:29.64, Dur: 8909s	hhN (dB)	-67.83	-64.03	-65.94	-75.99	9.9
TimeLngth: 8909.64s, TimeInt: 40ms (25.0pps)	vvN (dB)	-68.27	-65.03	-66.53	-76.55	10.0
TimeCor=0.0s, DSPDif[ms]: mn=40,mx-min=0	hhL (dB)	-33.59	-11.48	-18.46	-20.61	60.9
PPS(min,max,std): 25,25,0.00	vvL (dB)	-38.13	-12.40	-22.48	-25.12	54.4
Prof: 192 to 222934, NumProf(t/r): 222742/12551	ppN (m/s)	-12.89	12.82	-0.03	4.16	
ProcTime/Recs: 00:33:28-00:41:50/50204-62754	ppT (m/s)	-101.8	101.25	-0.25	32.84	
MxACQtime: 33ms; DRate: 139.9KB/s; Flags: 0, 0, 1	hh/vv (dB)	-NaN	60.56	16.26	38.06	1513
Pulse: 275ns, IFfilt: 5.0MHz; ppPol: HH HV VV	vh/hh (dB)	-NaN	-2.38	-13.82	-9.09	296.
TxPol: HHVV, PRF: 20 10 20 10 kHz	hv/vv (dB)	-NaN	-14.42	-35.72	-29.45	424.
Range: Delay 75m, Spacing 15m, Gates 100	hn_jmp (dB)	-2.21	2.20	-0.09	-8.66	13.9
Ave. Pulses: 84, Rng/Prof Aspect@90m/s: 4.2	vn_jmp (dB)	-2.41	2.50	-0.08	-8.62	14.0