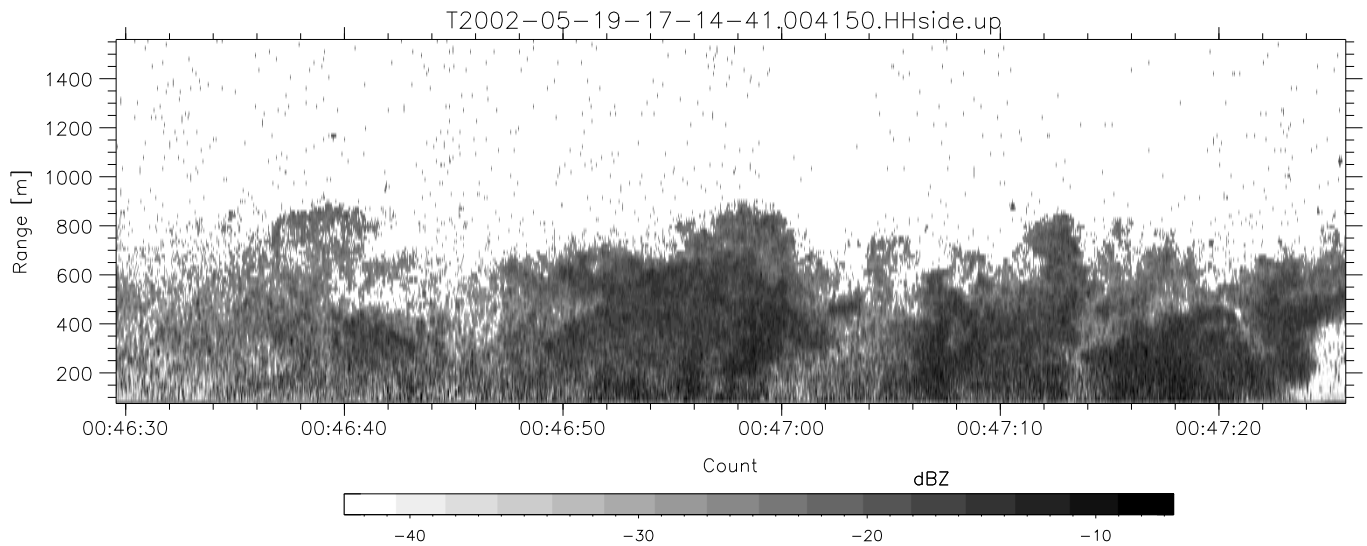
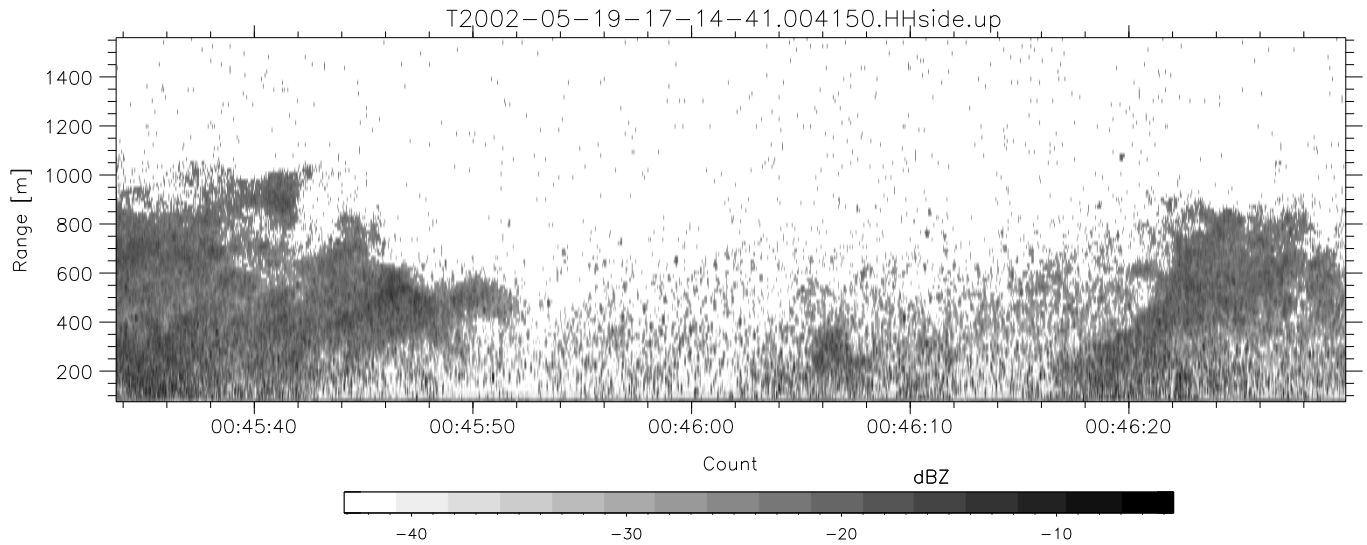
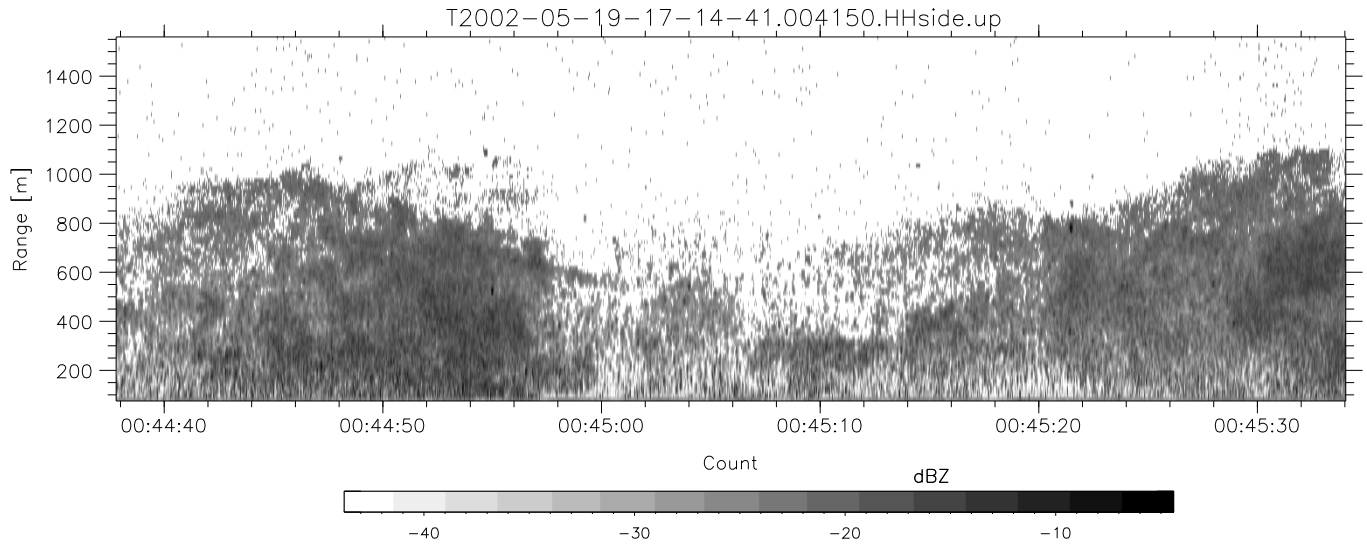


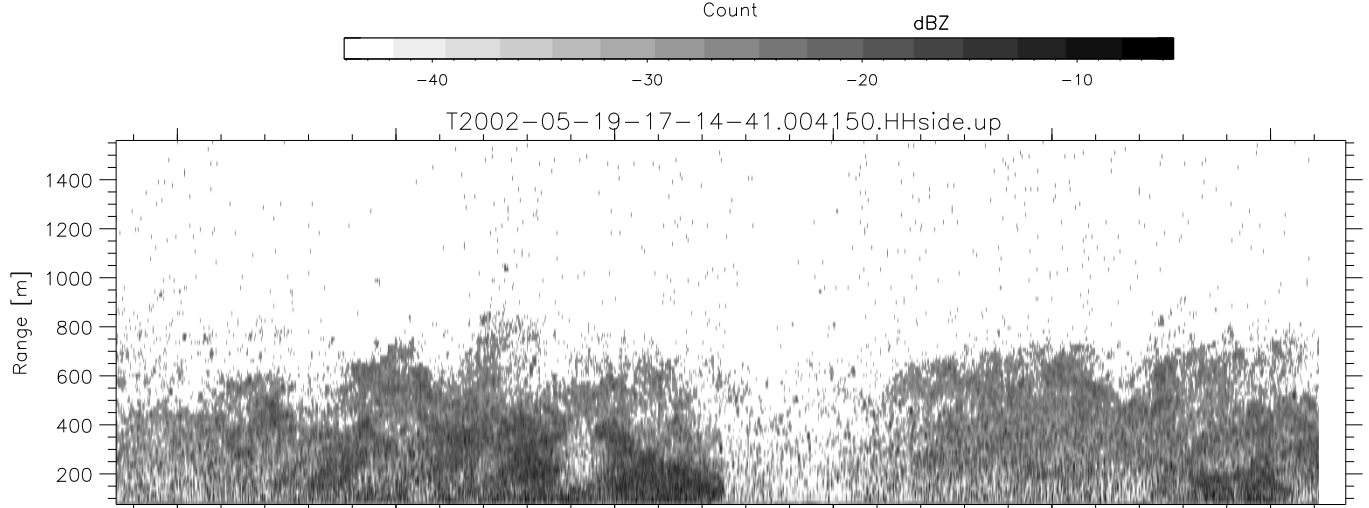
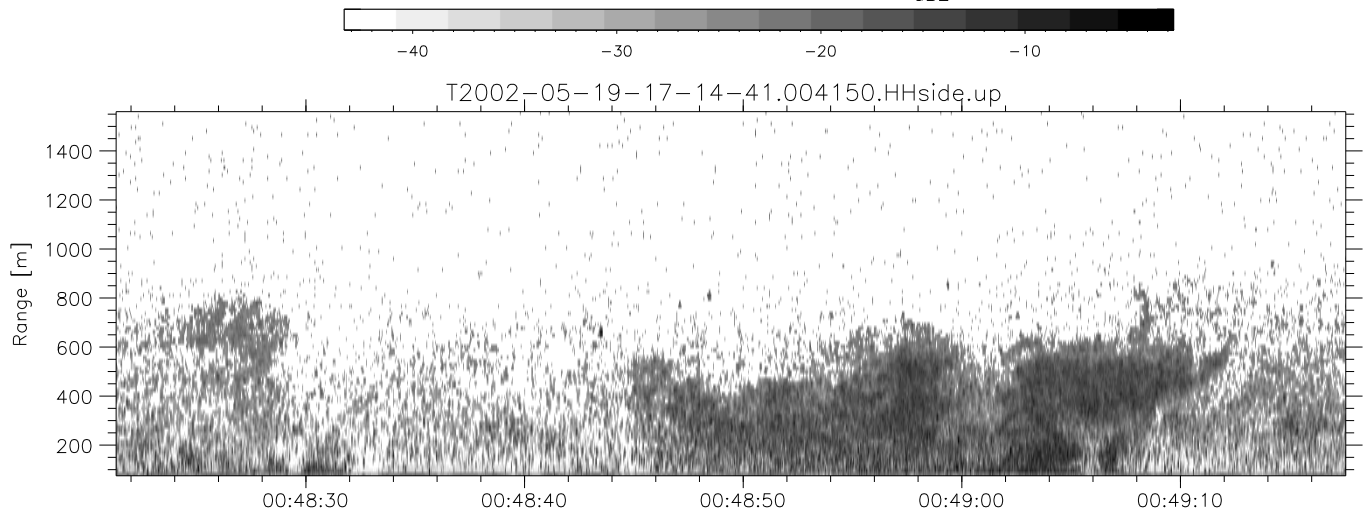
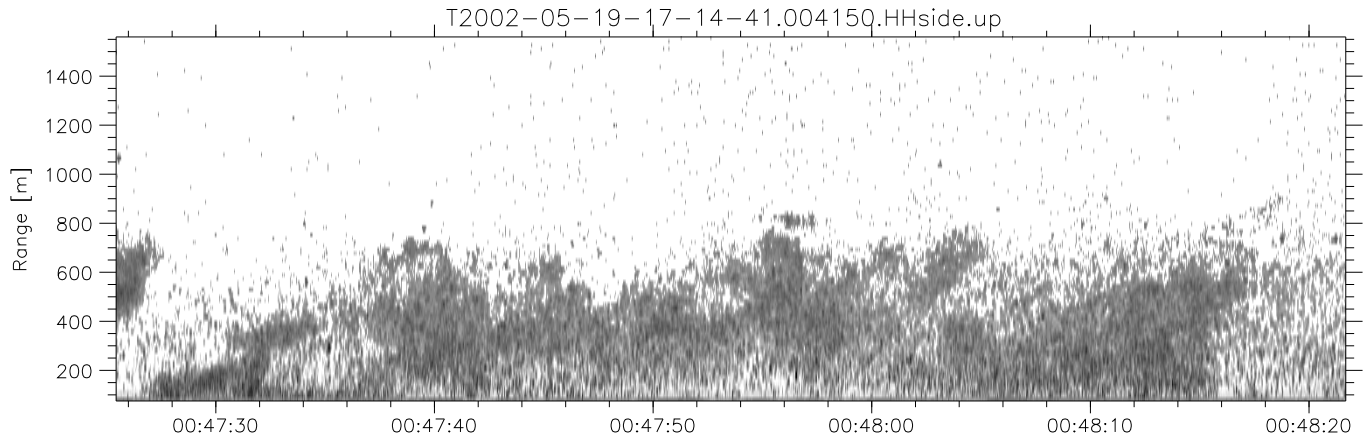
IHOP 2002 (dual-antenna config, modes 1,3,4,7) Data (cal: 49.0,50.0)

T2002-05-19-17-14-41 - PPMAG4	Min	Max	Mean	Std	Varc%	
IRIG:-2,Count: 00:00:00.0 to 02:28:29.64, Dur: 8909s	hhN (dB)	-68.00	-64.50	-66.05	-76.07	10.0
TimeLngth: 8909.64s, TimeInt: 40ms (25.0pps)	vvN (dB)	-68.31	-65.18	-66.64	-76.63	10.0
TimeCor=0.0s, DSPDif[ms]: mn=40,mx-min=0	hhL (dB)	-32.89	-13.94	-19.86	-22.86	50.1
PPS(min,max,std): 25,25,0.00	vvL (dB)	-37.12	-16.44	-23.00	-25.71	53.5
Prof: 192 to 222934, NumProf(t/r): 222742/12551	ppN (m/s)	-12.63	12.41	-0.06	4.16	
ProcTime/Recs: 00:41:50-00:50:12/62755-75305	ppT (m/s)	-99.80	98.06	-0.47	32.85	
MxACQtime: 33ms; DRate: 139.9KB/s; Flags: 0, 0, 1	hh/vv (dB)	-NaN	78.23	28.04	53.56	3565
Pulse: 275ns, IFfilt: 5.0MHz; ppPol: HH HV VV	vh/hh (dB)	-NaN	-0.20	-17.64	-11.07	453.
TxPol: HHVV, PRF: 20 10 20 10 kHz	hv/vv (dB)	-NaN	-16.37	-34.22	-31.67	179.
Range: Delay 75m, Spacing 15m, Gates 100	hn/jmp (dB)	-2.05	2.17	0.18	-8.41	13.8
Ave. Pulses: 84, Rng/Prof Aspect@90m/s: 4.2	vn/jmp (dB)	-2.15	2.54	0.18	-8.34	14.1



IHOP 2002 (dual-antenna config, modes 1,3,4,7) Data (cal: 49.0,50.0)

T2002-05-19-17-14-41 - PPMAG4	Min	Max	Mean	Std	Varc%	
IRIG:-2,Count: 00:00:00.0 to 02:28:29.64, Dur: 8909s	hhN (dB)	-68.00	-64.50	-66.05	-76.07	10.0
TimeLngth: 8909.64s, TimeInt: 40ms (25.0pps)	vvN (dB)	-68.31	-65.18	-66.64	-76.63	10.0
TimeCor=0.0s, DSPDif[ms]: mn=40,mx-min=0	hhL (dB)	-32.89	-13.94	-19.86	-22.86	50.1
PPS(min,max,std): 25,25,0.00	vvL (dB)	-37.12	-16.44	-23.00	-25.71	53.5
Prof: 192 to 222934, NumProf(t/r): 222742/12551	ppN (m/s)	-12.63	12.41	-0.06	4.16	
ProcTime/Recs: 00:41:50-00:50:12/62755-75305	ppT (m/s)	-99.80	98.06	-0.47	32.85	
MxACQtime: 33ms; DRate: 139.9KB/s; Flags: 0, 0, 1	hh/vv (dB)	-NaN	78.23	28.04	53.56	3565
Pulse: 275ns, IFfilt: 5.0MHz; ppPol: HH HV VV	vh/hh (dB)	-NaN	-0.20	-17.64	-11.07	453.
TxPol: HHVV, PRF: 20 10 20 10 kHz	hv/vv (dB)	-NaN	-16.37	-34.22	-31.67	179.
Range: Delay 75m, Spacing 15m, Gates 100	hnjmp (dB)	-2.05	2.17	0.18	-8.41	13.8
Ave. Pulses: 84, Rng/Prof Aspect@90m/s: 4.2	vnjmp (dB)	-2.15	2.54	0.18	-8.34	14.1



IHOP 2002 (dual-antenna config, modes 1,3,4,7) Data (cal: 49.0,50.0)

T2002-05-19-17-14-41 - PPMAG4	Min	Max	Mean	Std	Varc%	
IRIG:-2,Count: 00:00:00.0 to 02:28:29.64, Dur: 8909s	hhN(dB)	-68.00	-64.50	-66.05	-76.07	10.0
TimeLngth: 8909.64s, TimeInt: 40ms (25.0pps)	vvN(dB)	-68.31	-65.18	-66.64	-76.63	10.0
TimeCor=0.0s, DSPDif[ms]: mn=40,mx-min=0	hhL(dB)	-32.89	-13.94	-19.86	-22.86	50.1
PPS(min,max,std): 25,25,0.00	vvL(dB)	-37.12	-16.44	-23.00	-25.71	53.5
Prof: 192 to 222934, NumProf(t/r): 222742/12551	ppN(m/s)	-12.63	12.41	-0.06	4.16	
ProcTime/Recs: 00:41:50-00:50:12/62755-75305	ppT(m/s)	-99.80	98.06	-0.47	32.85	
MxACQtime: 33ms; DRate: 139.9KB/s; Flags: 0, 0, 1	hh/vv(dB)	-NaN	78.23	28.04	53.56	3565
Pulse: 275ns, IFfilt: 5.0MHz; ppPol: HH HV VV	vh/hh(dB)	-NaN	-0.20	-17.64	-11.07	453.
TxPol: HHVV, PRF: 20 10 20 10 kHz	hv/vv(dB)	-NaN	-16.37	-34.22	-31.67	179.
Range: Delay 75m, Spacing 15m, Gates 100	hnjmp(dB)	-2.05	2.17	0.18	-8.41	13.8
Ave. Pulses: 84, Rng/Prof Aspect@90m/s: 4.2	vnjmp(dB)	-2.15	2.54	0.18	-8.34	14.1