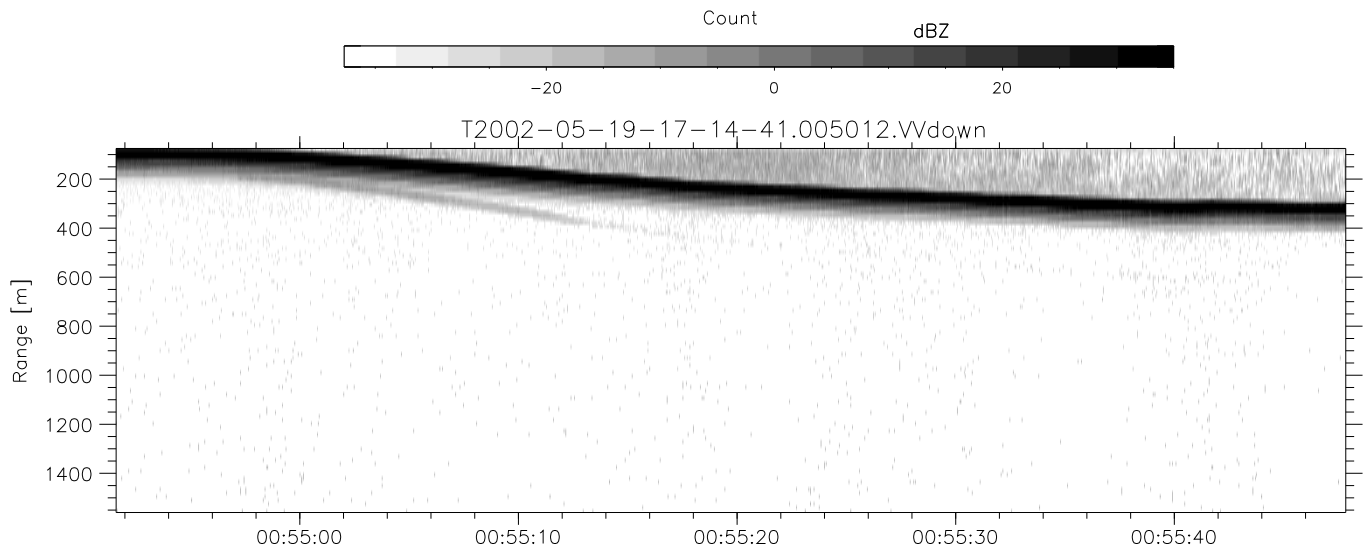
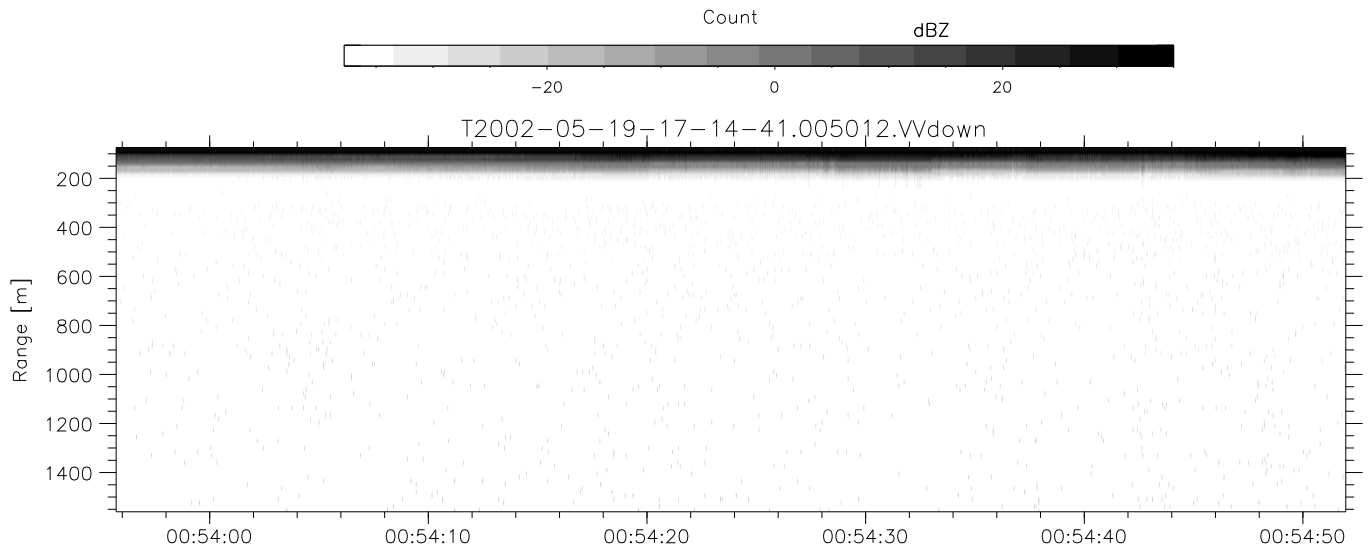
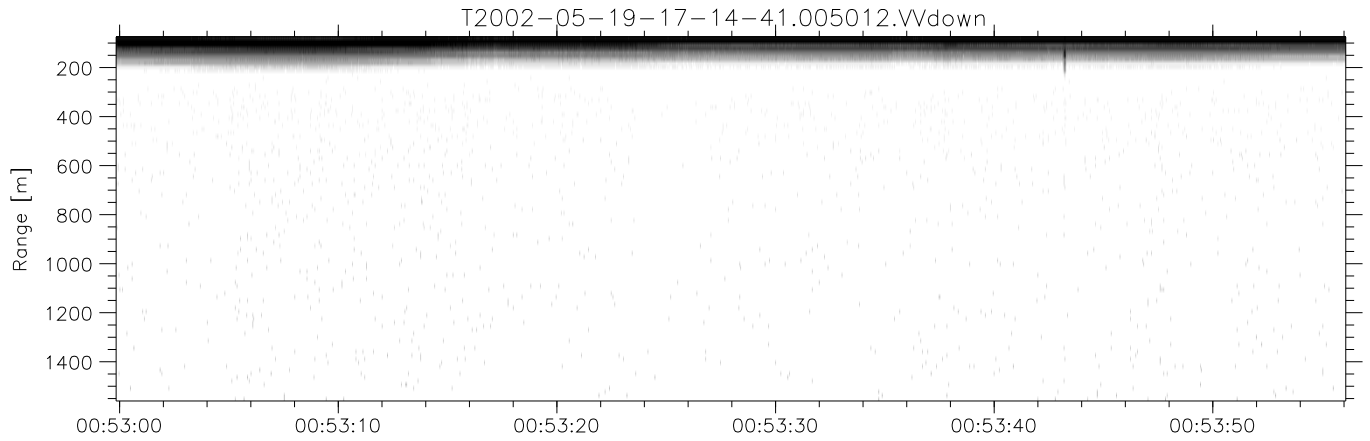


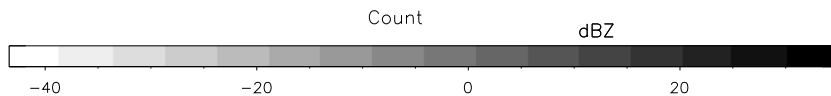
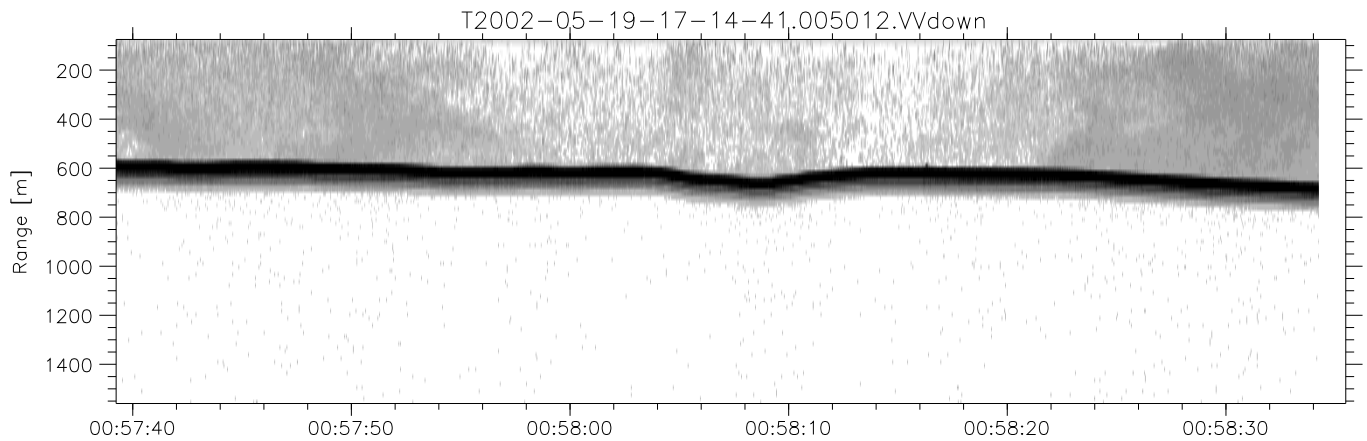
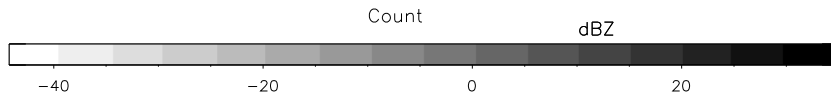
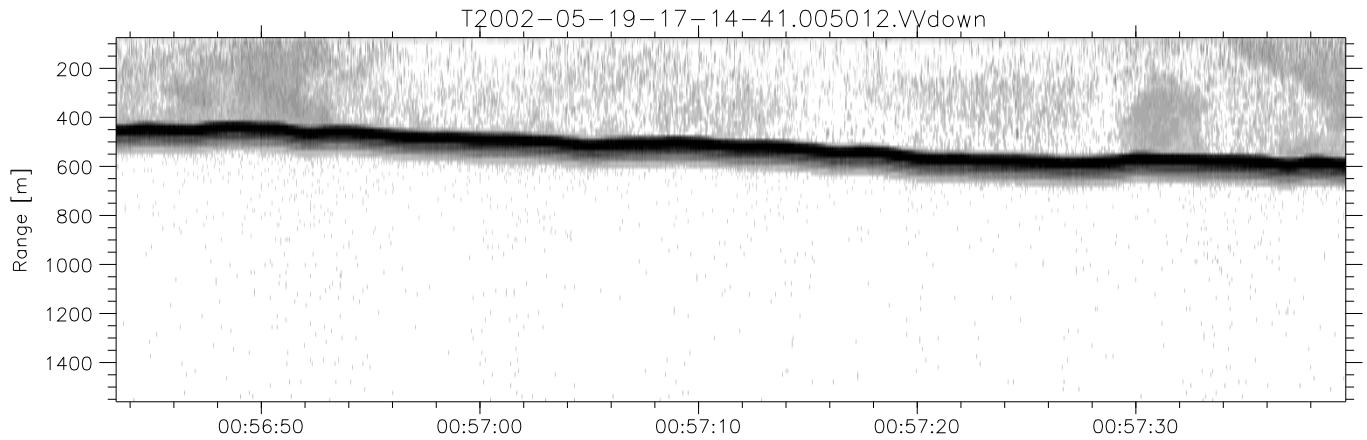
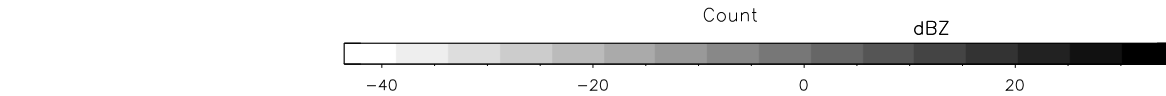
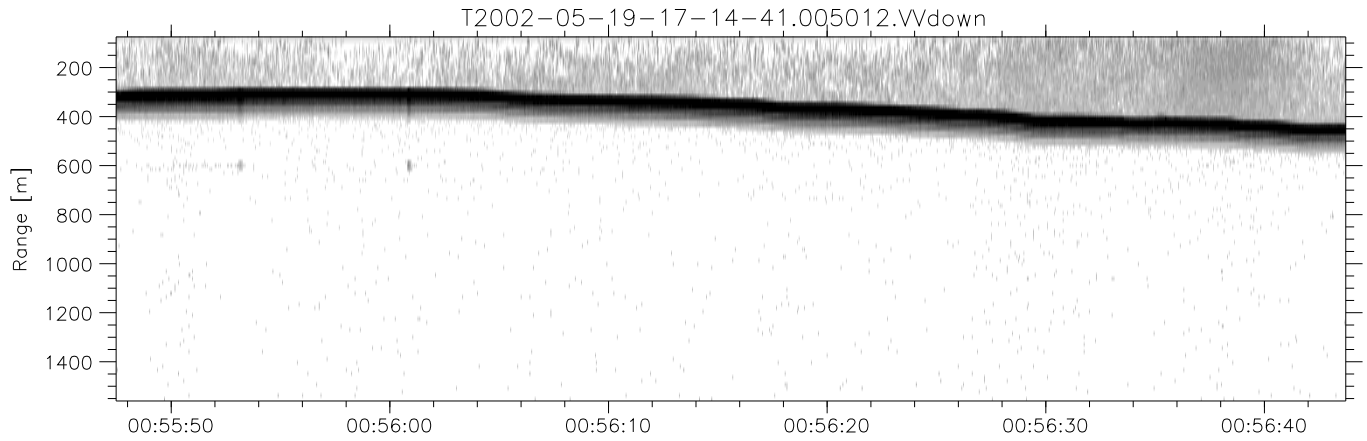
IHOP 2002 (dual-antenna config, modes 1,3,4,7) Data (cal: 49.0,50.0)

T2002-05-19-17-14-41 - PPMAG4	Min	Max	Mean	Std	Varc%	
IRIG:-2,Count: 00:00:00.0 to 02:28:29.64, Dur: 8909s	hhN(dB)	-68.14	-64.63	-66.16	-76.23	9.9
TimeLngth: 8909.64s, TimeInt: 40ms (25.0pps)	vvN(dB)	-68.50	-65.15	-66.72	-76.63	10.2
TimeCor=0.0s, DSPDif[ms]: mn=40,mx-min=0	hhL(dB)	-35.97	-13.77	-21.17	-23.72	55.6
PPS(min,max,std): 25,25,0.00	vvL(dB)	-37.31	-13.49	-23.37	-24.72	73.2
Prof: 192 to 222934, NumProf(t/r): 222742/12551	ppN(m/s)	-12.44	12.19	0.07	4.15	
ProcTime/Recs: 00:50:12-00:58:34/75306-87856	ppT(m/s)	-98.26	96.28	0.59	32.77	
MxAcQtime: 33ms; DRate: 139.9KB/s; Flags: 0, 0, 1	hh/vv(dB)	-NaN	58.95	-NaN	46.08	-476
Pulse: 275ns, IFfilt: 5.0MHz; ppPol: HH HV VV	vh/hh(dB)	-NaN	4.05	-14.98	-6.02	786.
TxPol: HHVV, PRF: 20 10 20 10 kHz	hv/vv(dB)	-NaN	-15.40	-35.90	-31.10	302.
Range: Delay 75m, Spacing 15m, Gates 100	hnjmp(dB)	-2.26	2.21	-0.09	-8.67	13.9
Ave. Pulses: 84, Rng/Prof Aspect@90m/s: 4.2	vnjmp(dB)	-2.30	2.05	-0.11	-8.53	14.4



IHOP 2002 (dual-antenna config, modes 1,3,4,7) Data (cal: 49.0,50.0)

T2002-05-19-17-14-41 - PPMAG4						
IRIG:-2,Count: 00:00:00.0 to 02:28:29.64, Dur: 8909s	hhN (dB)	Min	Max	Mean	Std	Varc%
TimeLngth: 8909.64s, TimeInt: 40ms (25.0pps)	vvN (dB)	-68.14	-64.63	-66.16	-76.23	9.9
TimeCor=0.0s, DSPDif[ms]: mn=40,mx-min=0	hhL (dB)	-68.50	-65.15	-66.72	-76.63	10.2
PPS(min,max,std): 25,25,0.00	vvL (dB)	-35.97	-13.77	-21.17	-23.72	55.6
Prof: 192 to 222934, NumProf(t/r): 222742/12551	ppN (m/s)	-37.31	-13.49	-23.37	-24.72	73.2
ProcTime/Recs: 00:50:12-00:58:34/75306-87856	ppT (m/s)	-12.44	12.19	0.07	4.15	
MxACQtime: 33ms; DRate: 139.9KB/s; Flags: 0, 0, 1	hh/vv (dB)	-98.26	96.28	0.59	32.77	
Pulse: 275ns, IFilt: 5.0MHz; ppPol: HH HV VV	vh/vh (dB)	-NaN	58.95	-NaN	46.08	-476
TxPol: HHVV, PRF: 20 10 20 10 kHz	hv/hv (dB)	-NaN	4.05	-14.98	-6.02	786.
Range: Delay 75m, Spacing 15m, Gates 100	hv/vv (dB)	-NaN	-15.40	-35.90	-31.10	302.
Ave. Pulses: 84, Rng/Prof Aspect@90m/s: 4.2	hn/jmp (dB)	-2.26	2.21	-0.09	-8.67	13.9
	vn/jmp (dB)	-2.30	2.05	-0.11	-8.53	14.4



IHOP 2002 (dual-antenna config, modes 1,3,4,7) Data (cal: 49.0,50.0)

T2002-05-19-17-14-41 - PPMAG4  
 IRIG:-2,Count: 00:00:00.0 to 02:28:29.64, Dur: 8909s  
 TimeLngth: 8909.64s, TimeInt: 40ms (25.0pps)  
 TimeCor=0.0s, DSPDif[ms]: mn=40,mx-min=0  
 PPS(min,max,std): 25,25,0.00  
 Prof: 192 to 222934, NumProf(t/r): 222742/12551  
 ProcTime/Recs: 00:50:12-00:58:34/75306-87856  
 MxACQtime: 33ms; DRate: 139.9KB/s; Flags: 0, 0, 1  
 Pulse: 275ns, IFfilt: 5.0MHz; ppPol: HH HV VV  
 TxPol: HHVV, PRF: 20 10 20 10 kHz  
 Range: Delay 75m, Spacing 15m, Gates 100  
 Ave. Pulses: 84, Rng/Prof Aspect@90m/s: 4.2

	Min	Max	Mean	Std	Varc%
hhN(dB)	-68.14	-64.63	-66.16	-76.23	9.9
vvN(dB)	-68.50	-65.15	-66.72	-76.63	10.2
hhL(dB)	-35.97	-13.77	-21.17	-23.72	55.6
vvL(dB)	-37.31	-13.49	-23.37	-24.72	73.2
ppN(m/s)	-12.44	12.19	0.07	4.15	
ppT(m/s)	-98.26	96.28	0.59	32.77	
hh/vv(dB)	-NaN	58.95	-NaN	46.08	-476
vh/hh(dB)	-NaN	4.05	-14.98	-6.02	786.
hv/vv(dB)	-NaN	-15.40	-35.90	-31.10	302.
hnjmp(dB)	-2.26	2.21	-0.09	-8.67	13.9
vnjmp(dB)	-2.30	2.05	-0.11	-8.53	14.4