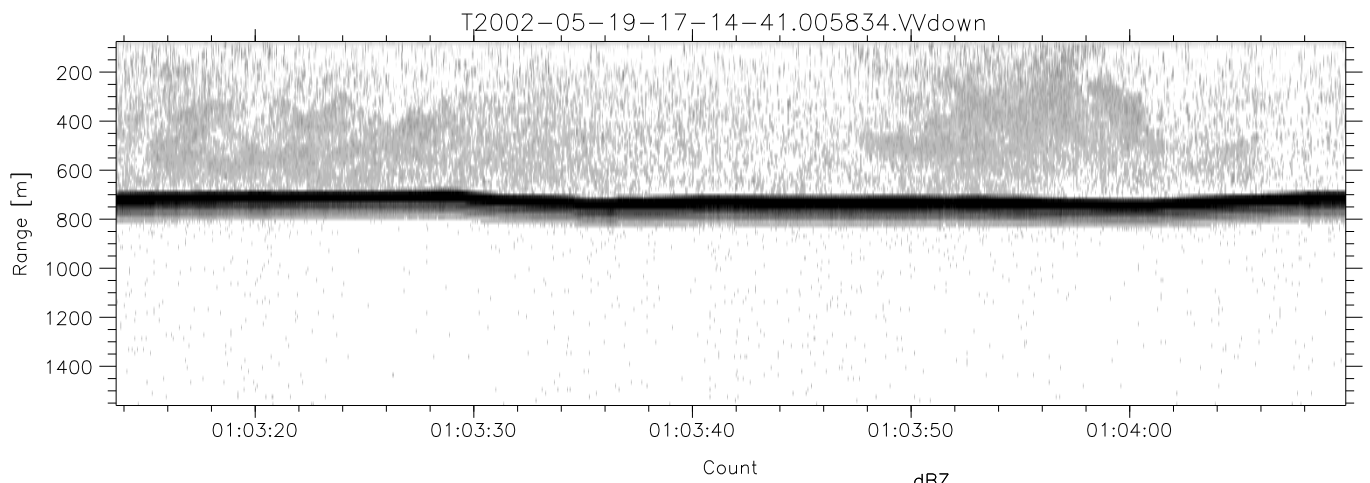
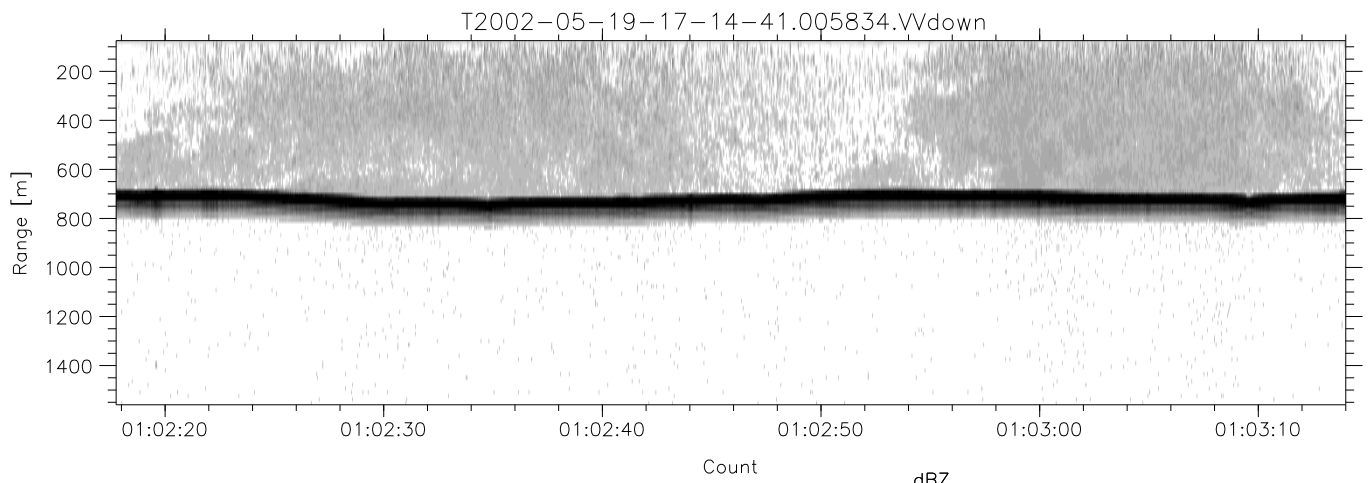
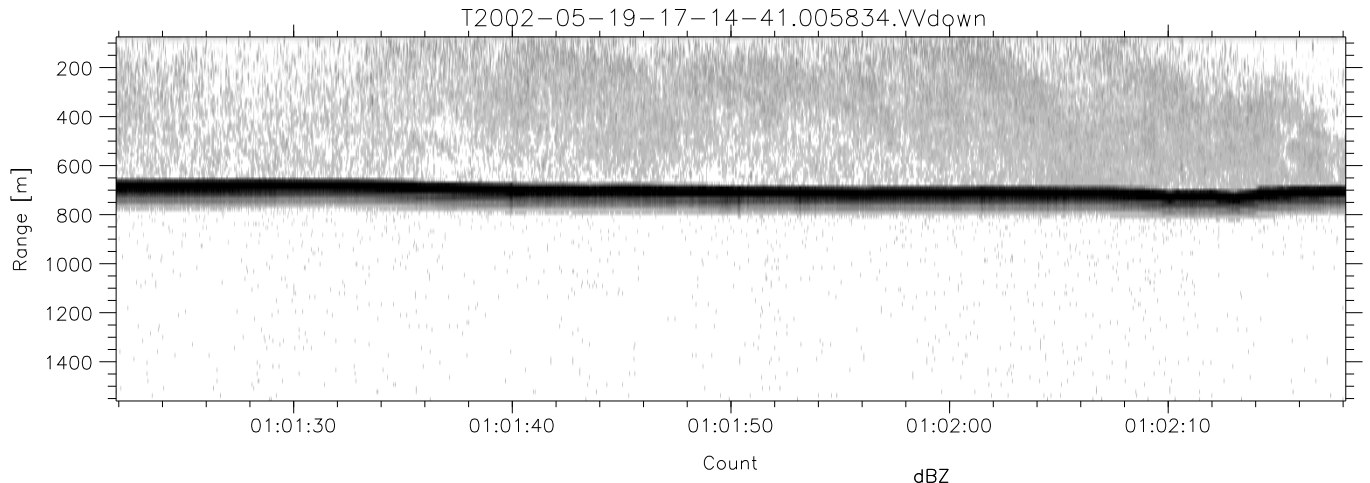


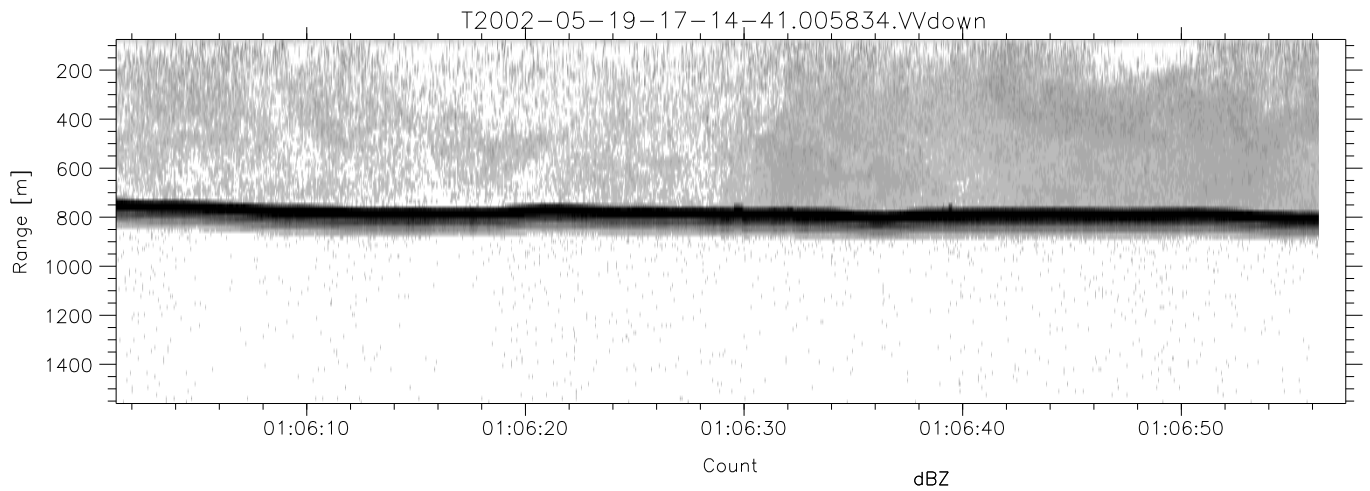
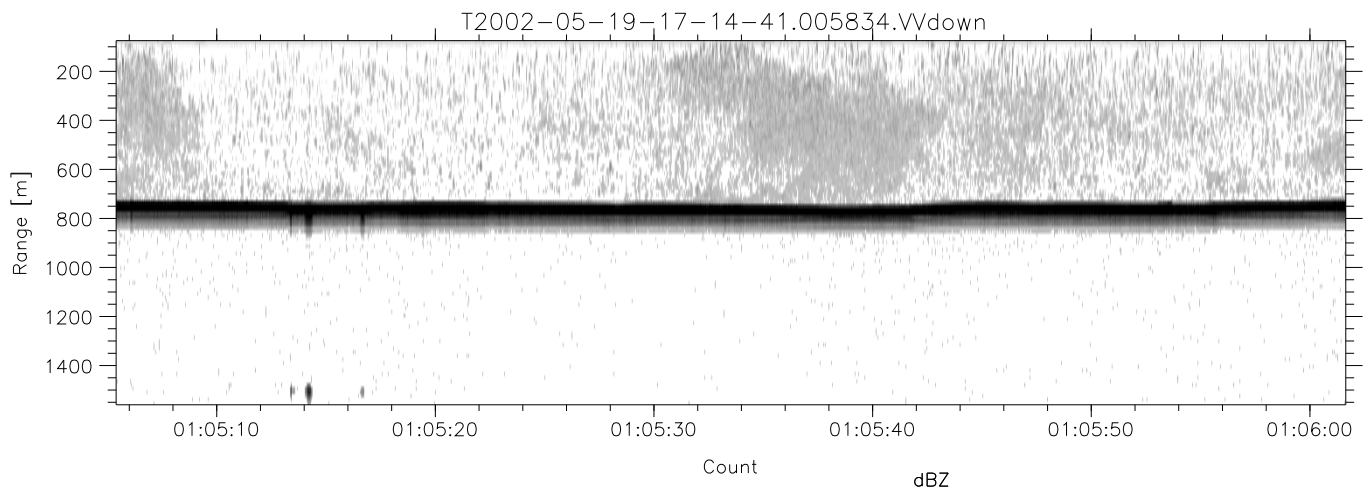
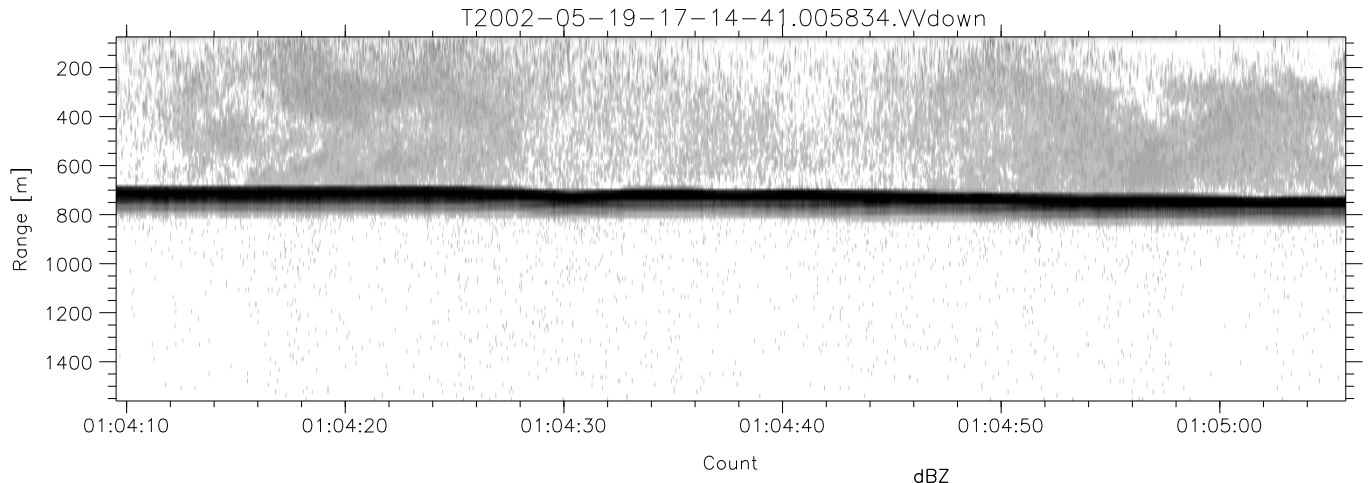
IHOP 2002 (dual-antenna config, modes 1,3,4,7) Data (cal: 49.0,50.0)

T2002-05-19-17-14-41 - PPMAG4	Min	Max	Mean	Std	Varc%	
IRIG:-2,Count: 00:00:00.0 to 02:28:29.64, Dur: 8909s	hhN(dB)	-68.06	-64.81	-66.27	-76.30	10.0
TimeLngth: 8909.64s, TimeInt: 40ms (25.0pps)	vvN(dB)	-68.65	-65.24	-66.79	-76.77	10.0
TimeCor=0.0s, DSPDif[ms]: mn=40,mx-min=0	hhL(dB)	-29.63	-16.82	-21.32	-26.44	30.8
PPS(min,max,std): 25,25,0.00	vvL(dB)	-25.78	-14.36	-21.54	-26.85	29.5
Prof: 192 to 222934, NumProf(t/r): 222742/12551	ppN(m/s)	-12.35	12.51	-0.03	4.17	
ProcTime/Recs: 00:58:34-01:06:56/87857-100407	ppT(m/s)	-97.59	98.83	-0.26	32.93	
MxAcQtime: 33ms; DRate: 139.9KB/s; Flags: 0, 0, 1	hh/vv(dB)	-NaN	48.12	16.80	32.01	3323
Pulse: 275ns, IFfilt: 5.0MHz; ppPol: HH HV VV	vh/hh(dB)	-NaN	-30.48	-35.28	-36.44	76.6
TxPol: HHVV, PRF: 20 10 20 10 kHz	hv/vv(dB)	-NaN	-34.70	-55.92	-46.15	948.
Range: Delay 75m, Spacing 15m, Gates 100	hnjmp(dB)	-1.89	2.99	0.17	-8.35	14.1
Ave. Pulses: 84, Rng/Prof Aspect@90m/s: 4.2	vnjmp(dB)	-2.11	2.38	0.17	-8.29	14.3



IHOP 2002 (dual-antenna config, modes 1,3,4,7) Data (cal: 49.0,50.0)

T2002-05-19-17-14-41 - PPMAG4						
IRIG:-2,Count: 00:00:00.0 to 02:28:29.64, Dur: 8909s	hhN(dB)	Min	Max	Mean	Std	Varc%
TimeLngth: 8909.64s, TimeInt: 40ms (25.0pps)	vvN(dB)	-68.06	-64.81	-66.27	-76.30	10.0
TimeCor=0.0s, DSPDif[ms]: mn=40,mx-min=0	hhL(dB)	-68.65	-65.24	-66.79	-76.77	10.0
PPS(min,max,std): 25,25,0.00	vvL(dB)	-29.63	-16.82	-21.32	-26.44	30.8
Prof: 192 to 222934, NumProf(t/r): 222742/12551	ppN(m/s)	-25.78	-14.36	-21.54	-26.85	29.5
ProcTime/Recs: 00:58:34-01:06:56/87857-100407	ppT(m/s)	-12.35	12.51	-0.03	4.17	
MxACQtime: 33ms; DRate: 139.9KB/s; Flags: 0, 0, 1	hh/vv(dB)	-97.59	98.83	-0.26	32.93	
Pulse: 275ns, IFilt: 5.0MHz; ppPol: HH HV VV	vh/vh(dB)	-NaN	48.12	16.80	32.01	3323
TxPol: HHVV, PRF: 20 10 20 10 kHz	hv/hv(dB)	-NaN	-30.48	-35.28	-36.44	76.6
Range: Delay 75m, Spacing 15m, Gates 100	hv/vv(dB)	-NaN	-34.70	-55.92	-46.15	948.
Ave. Pulses: 84, Rng/Prof Aspect@90m/s: 4.2	hnjmp(dB)	-1.89	2.99	0.17	-8.35	14.1
	vnjmp(dB)	-2.11	2.38	0.17	-8.29	14.3



IHOP 2002 (dual-antenna config, modes 1,3,4,7) Data (cal: 49.0,50.0)

T2002-05-19-17-14-41 - PPMAG4
 IRIG:-2,Count: 00:00:00.0 to 02:28:29.64, Dur: 8909s
 TimeLngth: 8909.64s, TimeInt: 40ms (25.0pps)
 TimeCor=0.0s, DSPDif[ms]: mn=40,mx-min=0
 PPS(min,max,std): 25,25,0.00
 Prof: 192 to 222934, NumProf(t/r): 222742/12551
 ProcTime/Recs: 00:58:34-01:06:56/87857-100407
 MxAcQtime: 33ms; DRate: 139.9KB/s; Flags: 0, 0, 1
 Pulse: 275ns, IFfilt: 5.0MHz; ppPol: HH HV VV
 TxPol: HHVV, PRF: 20 10 20 10 kHz
 Range: Delay 75m, Spacing 15m, Gates 100
 Ave. Pulses: 84, Rng/Prof Aspect@90m/s: 4.2

	Min	Max	Mean	Std	Varc%
hhN(dB)	-68.06	-64.81	-66.27	-76.30	10.0
vvN(dB)	-68.65	-65.24	-66.79	-76.77	10.0
hhL(dB)	-29.63	-16.82	-21.32	-26.44	30.8
vvL(dB)	-25.78	-14.36	-21.54	-26.85	29.5
ppN(m/s)	-12.35	12.51	-0.03	4.17	
ppT(m/s)	-97.59	98.83	-0.26	32.93	
hh/vv(dB)	-NaN	48.12	16.80	32.01	3323
vh/hh(dB)	-NaN	-30.48	-35.28	-36.44	76.6
hv/vv(dB)	-NaN	-34.70	-55.92	-46.15	948.
hnjmp(dB)	-1.89	2.99	0.17	-8.35	14.1
vnjmp(dB)	-2.11	2.38	0.17	-8.29	14.3