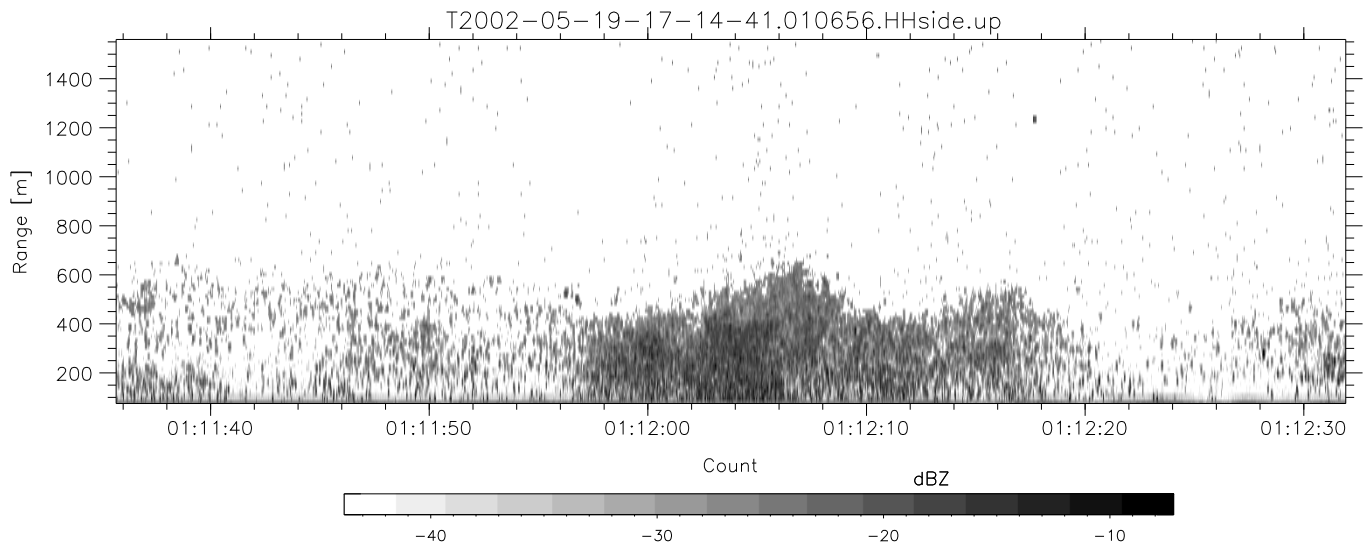
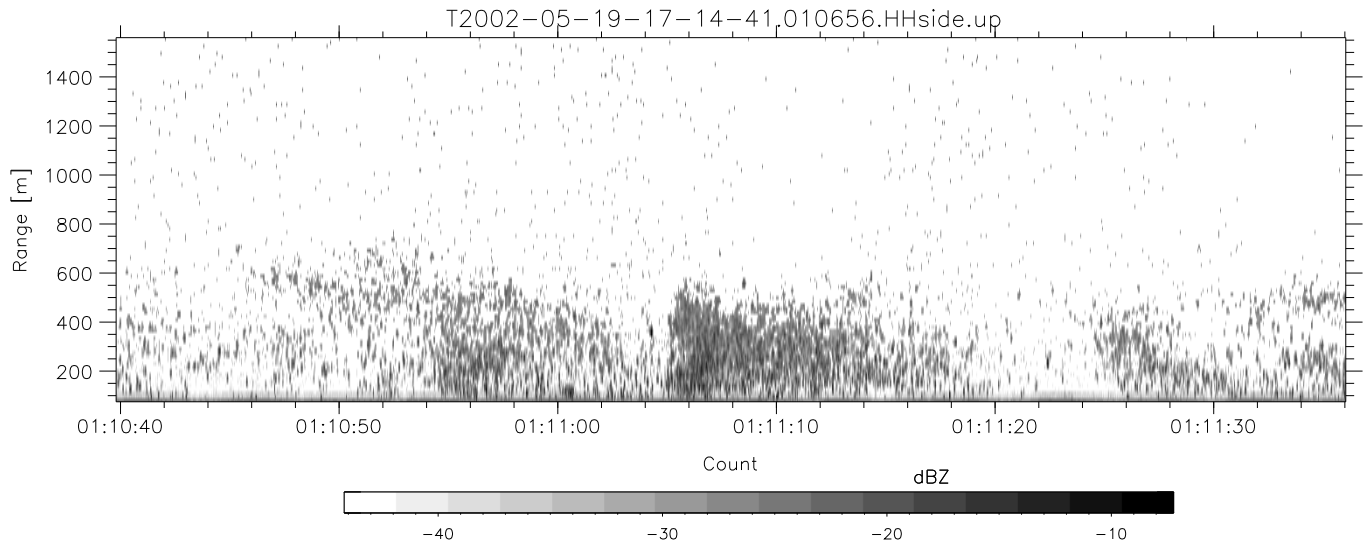
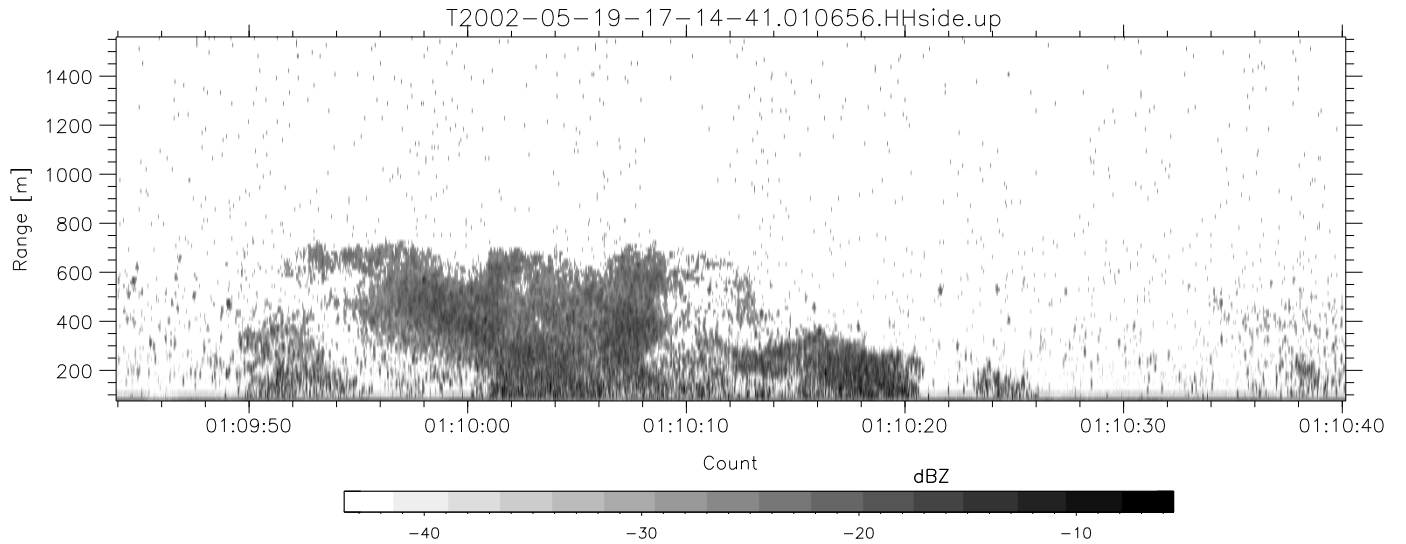


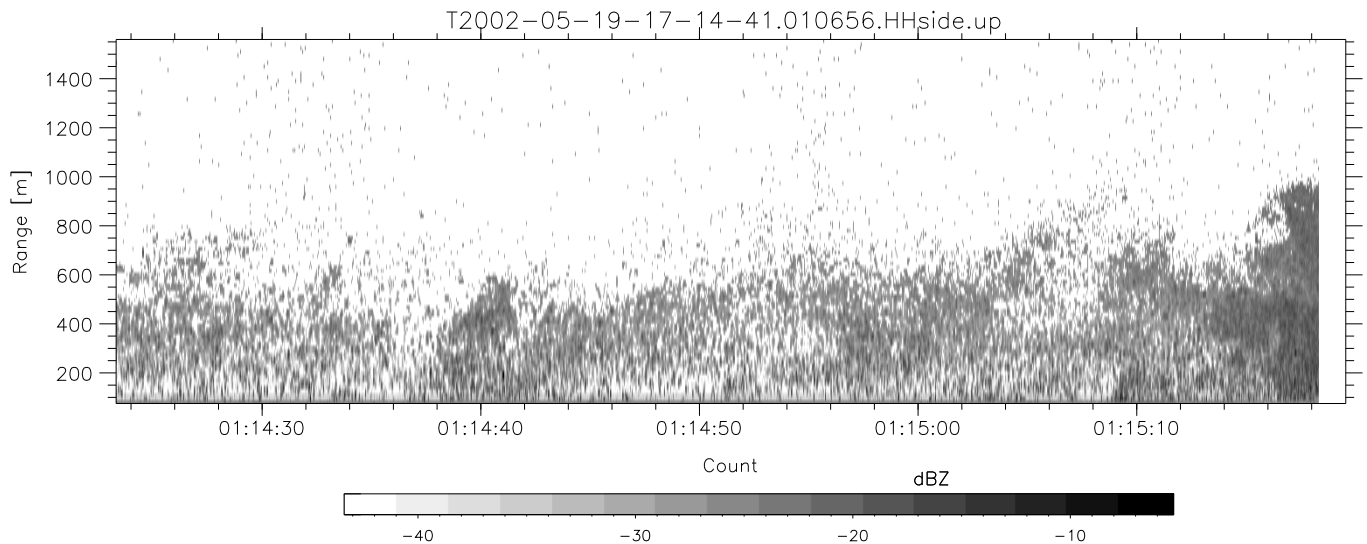
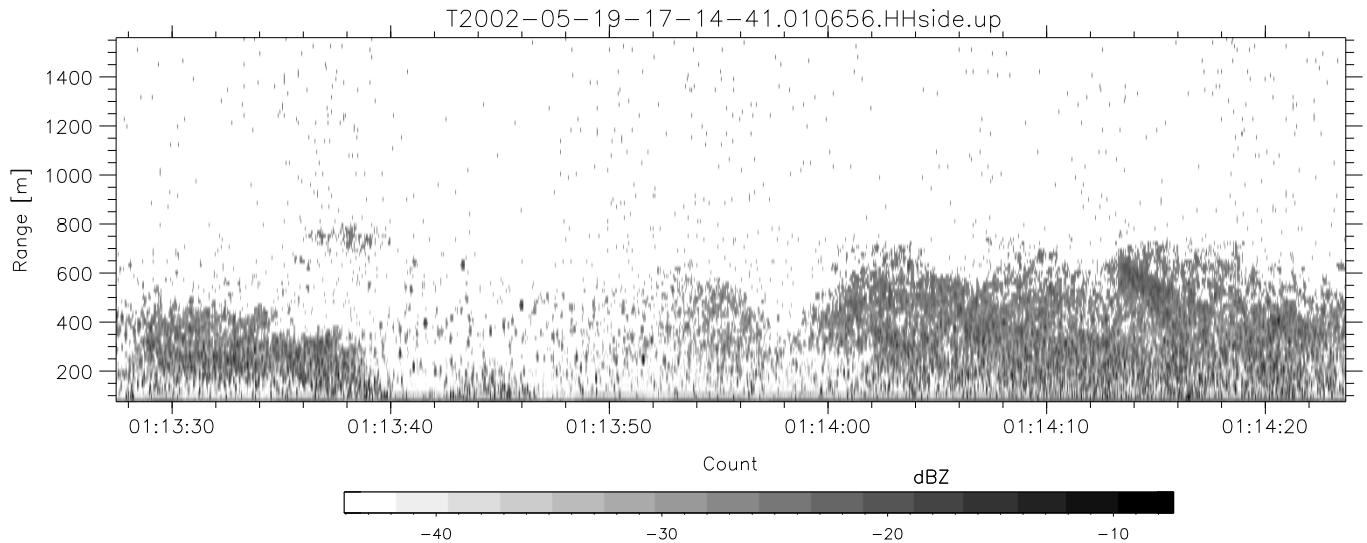
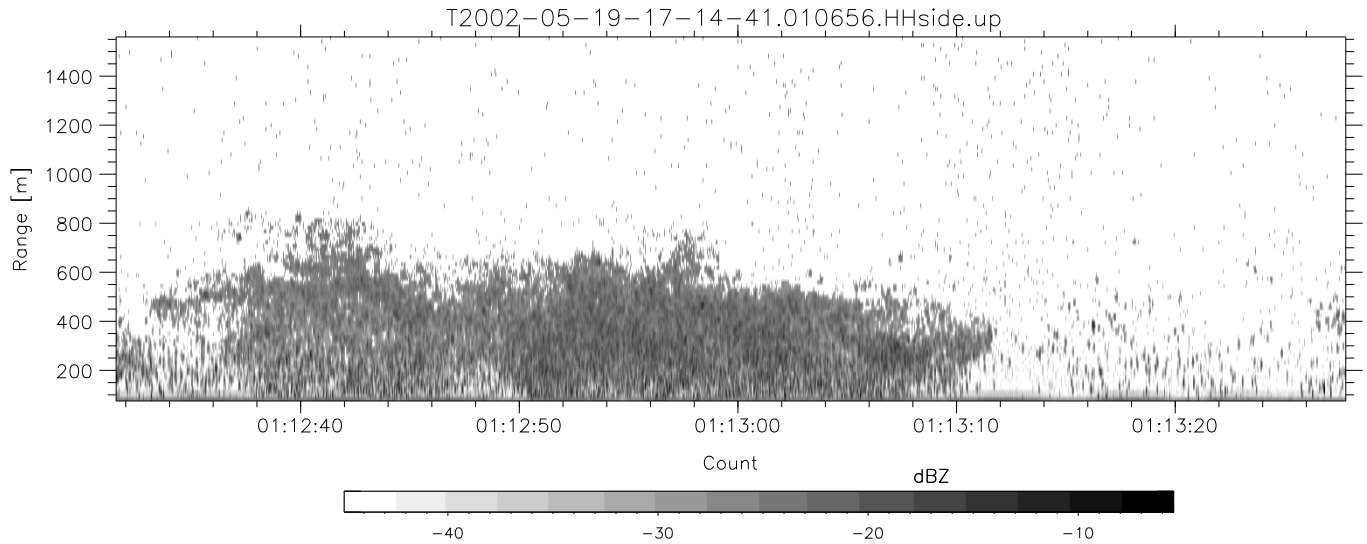
IHOP 2002 (dual-antenna config, modes 1,3,4,7) Data (cal: 49.0,50.0)

T2002-05-19-17-14-41 - PPMAG4						
IRIG:-2,Count: 00:00:00.0 to 02:28:29.64, Dur: 8909s	hhN(dB)	Min	Max	Mean	Std	Varc%
TimeLngth: 8909.64s, TimeInt: 40ms (25.0pps)	vvN(dB)	-68.15	-64.63	-66.35	-76.39	9.9
TimeCor=0.0s, DSPDif[ms]: mn=40,mx-min=0	hhL(dB)	-68.97	-65.12	-66.90	-76.86	10.1
PPS(min,max,std): 25,25,0.00	vvL(dB)	-29.78	-15.59	-19.99	-25.69	26.9
Prof: 192 to 222934, NumProf(t/r): 222742/12551	ppN(m/s)	-31.07	-13.00	-22.01	-26.34	36.9
ProcTime/Recs: 01:06:56-01:15:18/100408-112958	ppT(m/s)	-11.93	12.76	-0.10	4.10	
MxACQtime: 33ms; DRate: 139.9KB/s; Flags: 0, 0, 1	hh/vv(dB)	-94.28	100.77	-0.79	32.37	
Pulse: 275ns, IFilt: 5.0MHz; ppPol: HH HV VV	vh/hh(dB)	-NaN	58.15	17.10	36.92	9597
TxPol: HHVV, PRF: 20 10 20 10 kHz	hv/vv(dB)	-NaN	-31.70	-36.15	-37.09	80.6
Range: Delay 75m, Spacing 15m, Gates 100	hn/vv(dB)	-NaN	-35.30	-56.12	-45.76	1085
Ave. Pulses: 84, Rng/Prof Aspect@90m/s: 4.2	hn/jmp(dB)	-2.58	2.07	-0.08	-8.60	14.1
	vn/jmp(dB)	-2.89	2.85	-0.10	-8.60	14.1



IHOP 2002 (dual-antenna config, modes 1,3,4,7) Data (cal: 49.0,50.0)

T2002-05-19-17-14-41 - PPMAG4	Min	Max	Mean	Std	Varc%	
IRIG:-2,Count: 00:00:00.0 to 02:28:29.64, Dur: 8909s	hhN(dB)	-68.15	-64.63	-66.35	-76.39	9.9
TimeLngth: 8909.64s, TimeInt: 40ms (25.0pps)	vvN(dB)	-68.97	-65.12	-66.90	-76.86	10.1
TimeCor=0.0s, DSPDif[ms]: mn=40,mx-min=0	hhL(dB)	-29.78	-15.59	-19.99	-25.69	26.9
PPS(min,max,std): 25,25,0.00	vvL(dB)	-31.07	-13.00	-22.01	-26.34	36.9
Prof: 192 to 222934, NumProf(t/r): 222742/12551	ppN(m/s)	-11.93	12.76	-0.10	4.10	
ProcTime/Recs: 01:06:56-01:15:18/100408-112958	ppT(m/s)	-94.28	100.77	-0.79	32.37	
MxACQtime: 33ms; DRate: 139.9KB/s; Flags: 0, 0, 1	hh/vv(dB)	-NaN	58.15	17.10	36.92	9597
Pulse: 275ns, IFfilt: 5.0MHz; ppPol: HH HV VV	vh/hh(dB)	-NaN	-31.70	-36.15	-37.09	80.6
TxPol: HHVV, PRF: 20 10 20 10 kHz	hv/vv(dB)	-NaN	-35.30	-56.12	-45.76	1085
Range: Delay 75m, Spacing 15m, Gates 100	hnjmp(dB)	-2.58	2.07	-0.08	-8.60	14.1
Ave. Pulses: 84, Rng/Prof Aspect@90m/s: 4.2	vnjmp(dB)	-2.89	2.85	-0.10	-8.60	14.1



IHOP 2002 (dual-antenna config, modes 1,3,4,7) Data (cal: 49.0,50.0)

T2002-05-19-17-14-41 - PPMAG4	Min	Max	Mean	Std	Varc%	
IRIG:-2,Count: 00:00:00.0 to 02:28:29.64, Dur: 8909s	hhN (dB)	-68.15	-64.63	-66.35	-76.39	9.9
TimeLngth: 8909.64s, TimeInt: 40ms (25.0pps)	vvN (dB)	-68.97	-65.12	-66.90	-76.86	10.1
TimeCor=0.0s, DSPDif[ms]: mn=40,mx-min=0	hhL (dB)	-29.78	-15.59	-19.99	-25.69	26.9
PPS(min,max,std): 25,25,0.00	vvL (dB)	-31.07	-13.00	-22.01	-26.34	36.9
Prof: 192 to 222934, NumProf(t/r): 222742/12551	ppN (m/s)	-11.93	12.76	-0.10	4.10	
ProcTime/Recs: 01:06:56-01:15:18/100408-112958	ppT (m/s)	-94.28	100.77	-0.79	32.37	
MxAcQtime: 33ms; DRate: 139.9KB/s; Flags: 0, 0, 1	hh/vv (dB)	-NaN	58.15	17.10	36.92	9597
Pulse: 275ns, IFfilt: 5.0MHz; ppPol: HH HV VV	vh/hh (dB)	-NaN	-31.70	-36.15	-37.09	80.6
TxPol: HHVV, PRF: 20 10 20 10 kHz	hv/vv (dB)	-NaN	-35.30	-56.12	-45.76	1085
Range: Delay 75m, Spacing 15m, Gates 100	hn/jmp (dB)	-2.58	2.07	-0.08	-8.60	14.1
Ave. Pulses: 84, Rng/Prof Aspect@90m/s: 4.2	vn/jmp (dB)	-2.89	2.85	-0.10	-8.60	14.1