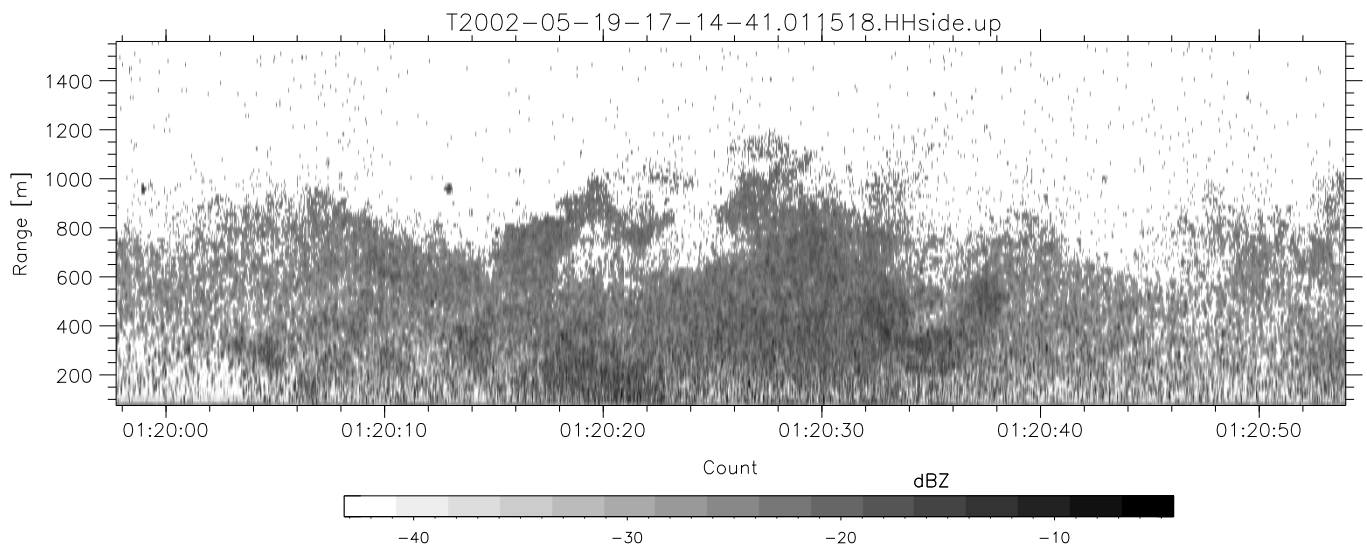
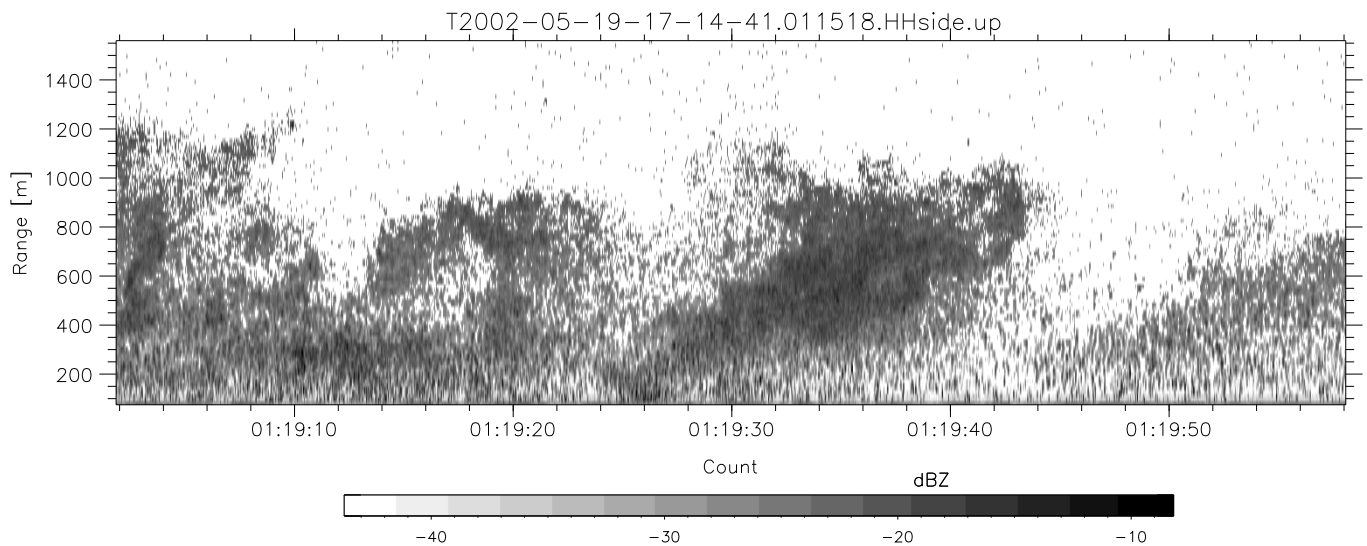
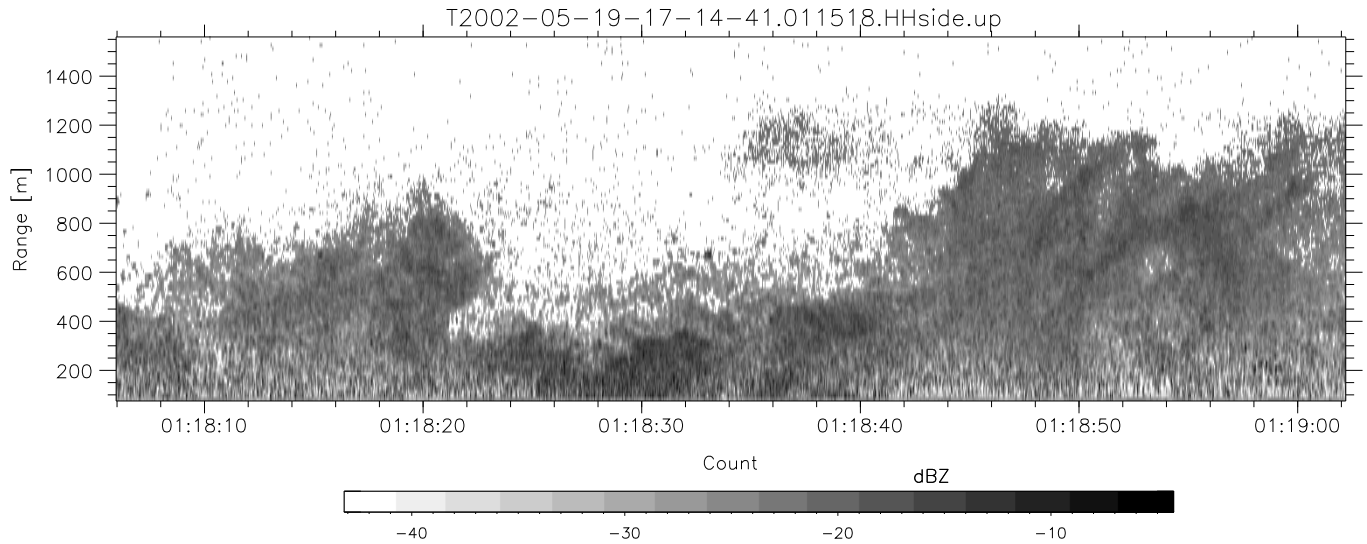


IHOP 2002 (dual-antenna config, modes 1,3,4,7) Data (cal: 49.0,50.0)

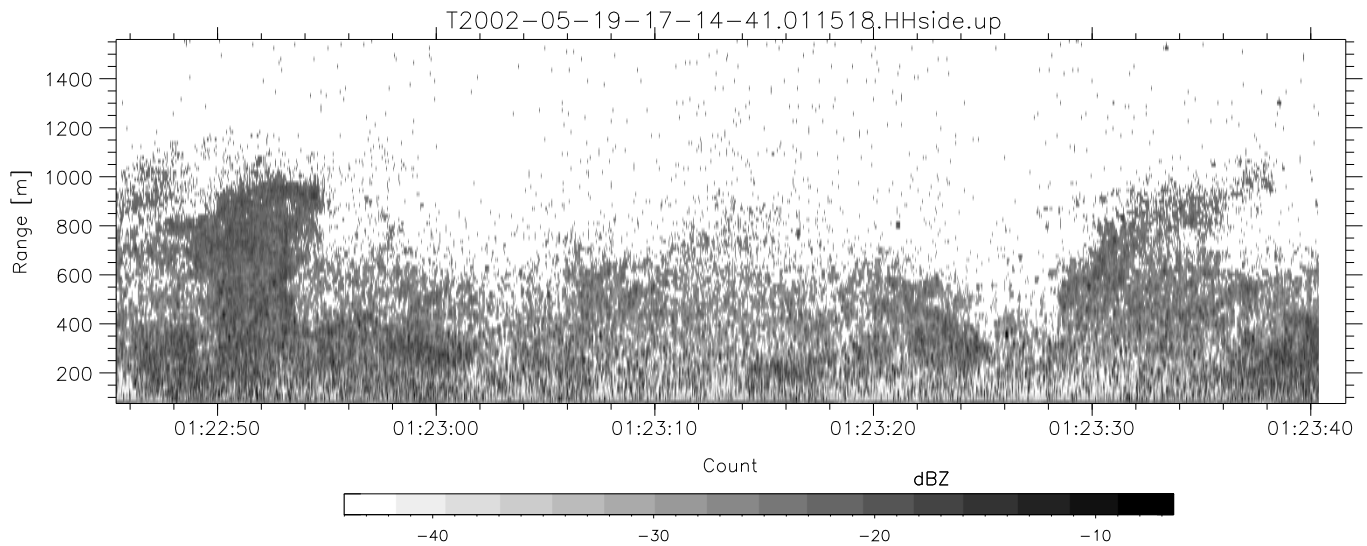
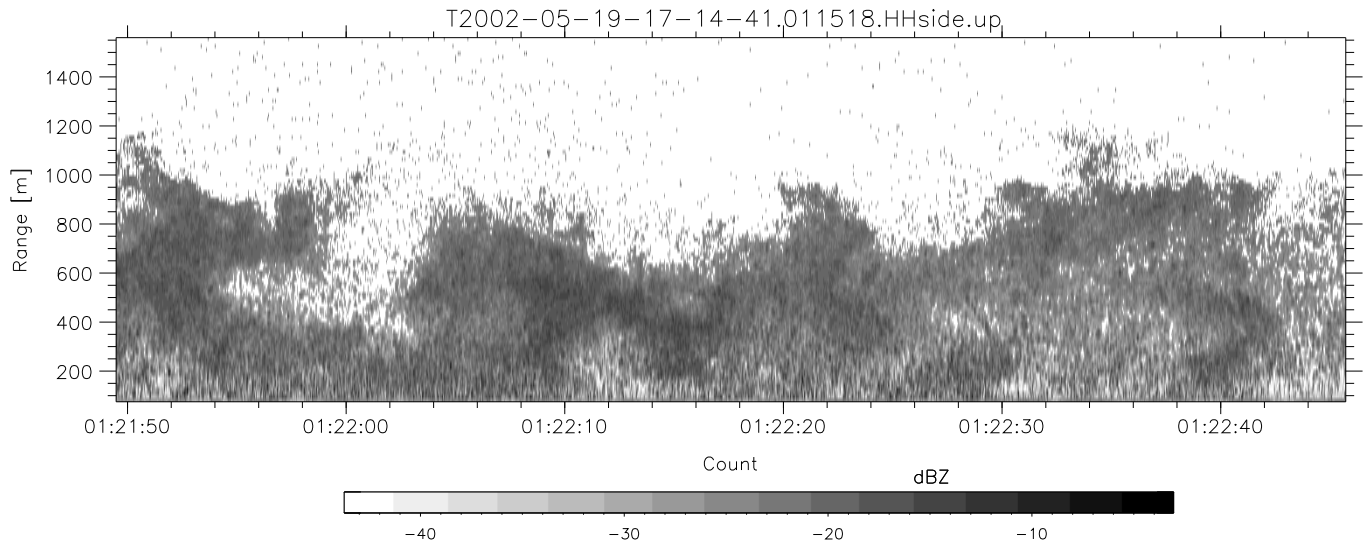
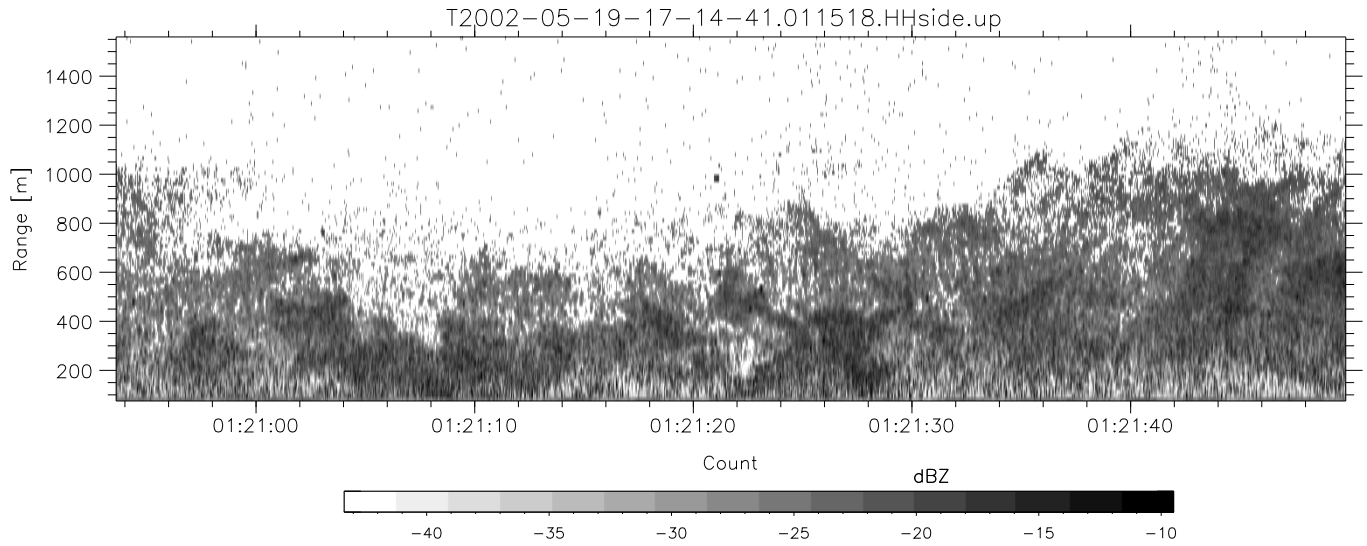
T2002-05-19-17-14-41 - PPMAG4	Min	Max	Mean	Std	Varc%	
IRIG:-2,Count: 00:00:00.0 to 02:28:29.64, Dur: 8909s	hhN(dB)	-68.34	-64.82	-66.40	-76.43	9.9
TimeLngth: 8909.64s, TimeInt: 40ms (25.0pps)	vvN(dB)	-68.84	-65.51	-66.98	-76.90	10.2
TimeCor=0.0s, DSPDif[ms]: mn=40,mx-min=0	hhL(dB)	-35.91	-13.97	-21.48	-24.14	54.3
PPS(min,max,std): 25,25,0.00	vvL(dB)	-39.49	-13.23	-23.86	-23.01	121.
Prof: 192 to 222934, NumProf(t/r): 222742/12551	ppN(m/s)	-12.43	12.11	0.01	4.15	
ProcTime/Recs: 01:15:18-01:23:40/112959-125509	ppT(m/s)	-98.17	95.65	0.09	32.79	
MxACQtime: 33ms; DRate: 139.9KB/s; Flags: 0, 0, 1	hh/vv(dB)	-NaN	61.79	16.51	39.21	1860
Pulse: 275ns, IFfilt: 5.0MHz; ppPol: HH HV VV	vh/hh(dB)	-NaN	6.63	-8.58	-2.10	444.
TxPol: HHVV, PRF: 20 10 20 10 kHz	hv/vv(dB)	-NaN	-14.78	-37.73	-31.63	407.
Range: Delay 75m, Spacing 15m, Gates 100	hn/jmp(dB)	-2.15	2.57	0.17	-8.39	13.9
Ave. Pulses: 84, Rng/Prof Aspect@90m/s: 4.2	vn/jmp(dB)	-2.29	2.60	0.18	-8.27	14.3



IHOP 2002 (dual-antenna config, modes 1,3,4,7) Data (cal: 49.0,50.0)

T2002-05-19-17-14-41 - PPMAG4  
 IRIG:-2,Count: 00:00:00.0 to 02:28:29.64, Dur: 8909s  
 TimeLngth: 8909.64s, TimeInt: 40ms (25.0pps)  
 TimeCor=0.0s, DSPDif[ms]: mn=40,mx-min=0  
 PPS(min,max,std): 25,25,0.00  
 Prof: 192 to 222934, NumProf(t/r): 222742/12551  
 ProcTime/Recs: 01:15:18-01:23:40/112959-125509  
 MxACQtime: 33ms; DRate: 139.9KB/s; Flags: 0, 0, 1  
 Pulse: 275ns, IFilt: 5.0MHz; ppPol: HH HV VV  
 TxPol: HHVV, PRF: 20 10 20 10 kHz  
 Range: Delay 75m, Spacing 15m, Gates 100  
 Ave. Pulses: 84, Rng/Prof Aspect@90m/s: 4.2

	Min	Max	Mean	Std	Varc%
hhN(dB)	-68.34	-64.82	-66.40	-76.43	9.9
vvN(dB)	-68.84	-65.51	-66.98	-76.90	10.2
hhL(dB)	-35.91	-13.97	-21.48	-24.14	54.3
vvL(dB)	-39.49	-13.23	-23.86	-23.01	121.
ppN(m/s)	-12.43	12.11	0.01	4.15	
ppT(m/s)	-98.17	95.65	0.09	32.79	
hh/vv(dB)	-NaN	61.79	16.51	39.21	1860
vh/hh(dB)	-NaN	6.63	-8.58	-2.10	444.
hv/vv(dB)	-NaN	-14.78	-37.73	-31.63	407.
hh/jmp(dB)	-2.15	2.57	0.17	-8.39	13.9
vv/jmp(dB)	-2.29	2.60	0.18	-8.27	14.3



IHOP 2002 (dual-antenna config, modes 1,3,4,7) Data (cal: 49.0,50.0)

T2002-05-19-17-14-41 - PPMAG4	Min	Max	Mean	Std	Varc%	
IRIG:-2,Count: 00:00:00.0 to 02:28:29.64, Dur: 8909s	hhN (dB)	-68.34	-64.82	-66.40	-76.43	9.9
TimeLngth: 8909.64s, TimeInt: 40ms (25.0pps)	vvN (dB)	-68.84	-65.51	-66.98	-76.90	10.2
TimeCor=0.0s, DSPDif[ms]: mn=40,mx-min=0	hhL (dB)	-35.91	-13.97	-21.48	-24.14	54.3
PPS(min,max,std): 25,25,0.00	vvL (dB)	-39.49	-13.23	-23.86	-23.01	121.
Prof: 192 to 222934, NumProf(t/r): 222742/12551	ppN (m/s)	-12.43	12.11	0.01	4.15	
ProcTime/Recs: 01:15:18-01:23:40/112959-125509	ppT (m/s)	-98.17	95.65	0.09	32.79	
MxACQtime: 33ms; DRate: 139.9KB/s; Flags: 0, 0, 1	hh/vv (dB)	-NaN	61.79	16.51	39.21	1860
Pulse: 275ns, IFilt: 5.0MHz; ppPol: HH HV VV	vh/hh (dB)	-NaN	6.63	-8.58	-2.10	444.
TxPol: HHVV, PRF: 20 10 20 10 kHz	hv/vv (dB)	-NaN	-14.78	-37.73	-31.63	407.
Range: Delay 75m, Spacing 15m, Gates 100	hnjmp (dB)	-2.15	2.57	0.17	-8.39	13.9
Ave. Pulses: 84, Rng/Prof Aspect@90m/s: 4.2	vnjmp (dB)	-2.29	2.60	0.18	-8.27	14.3