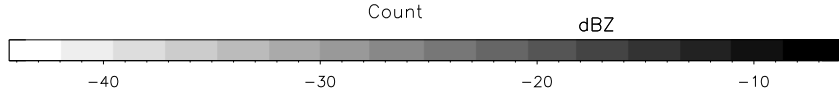
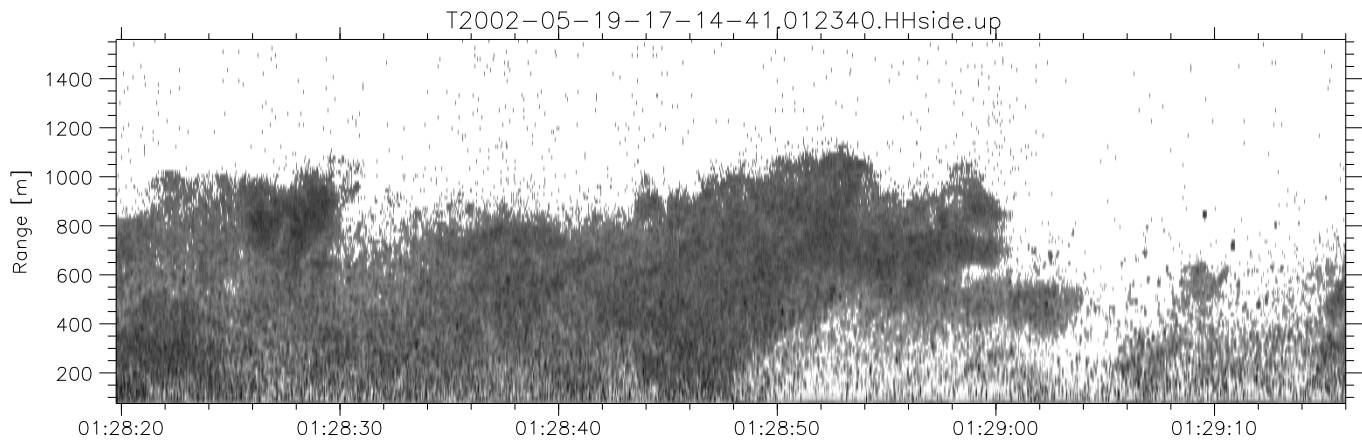
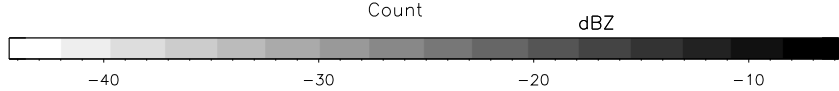
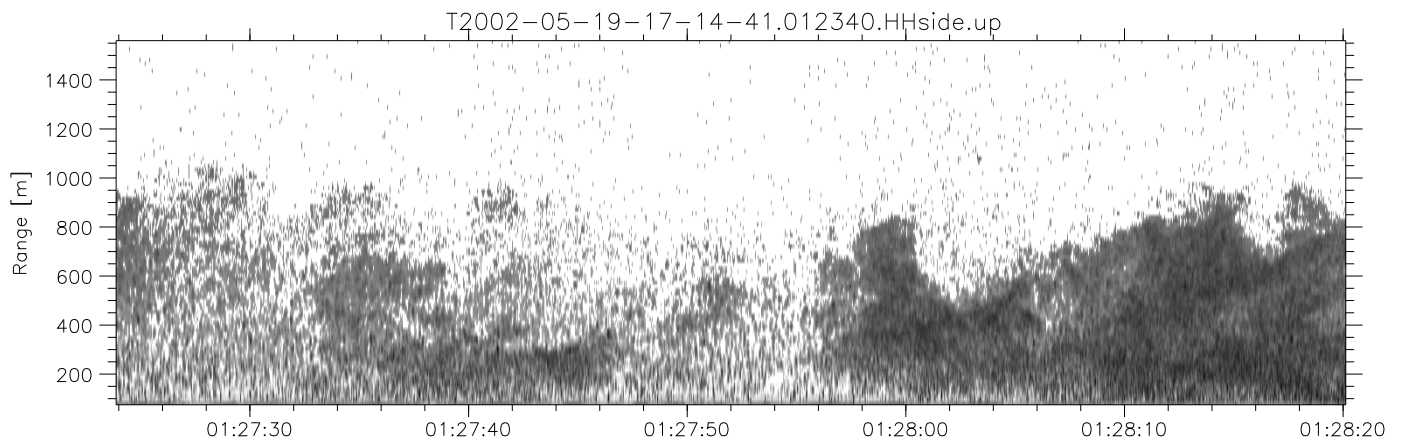
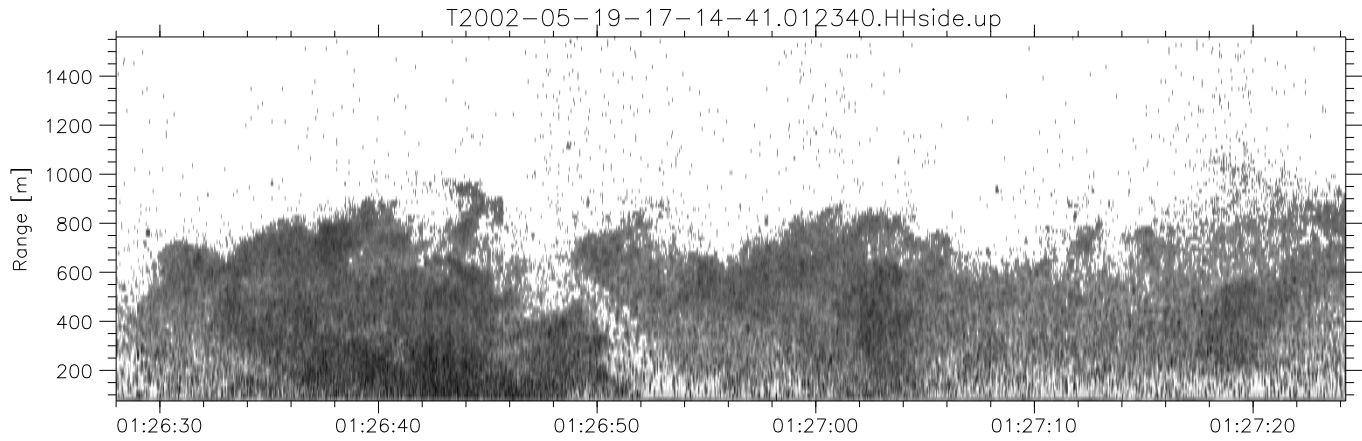


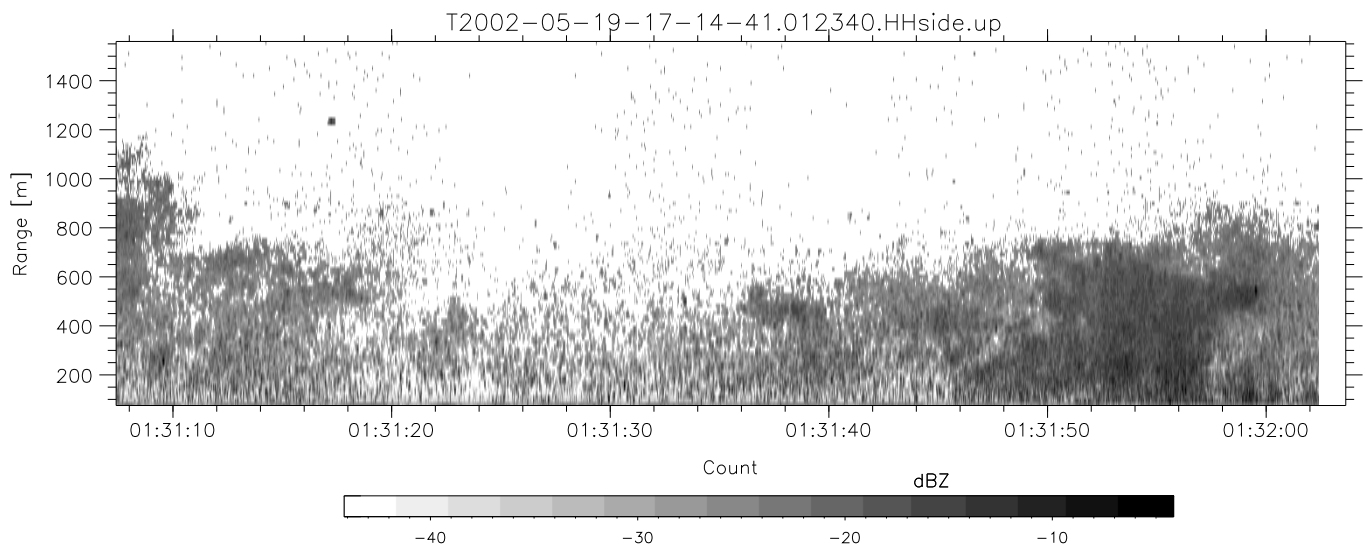
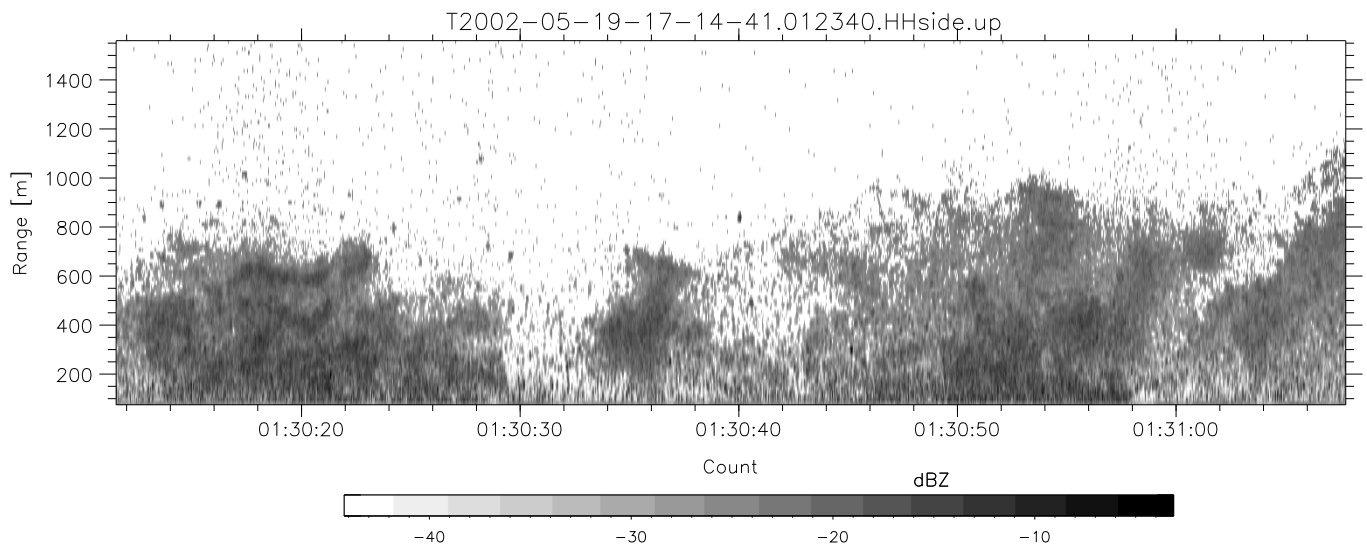
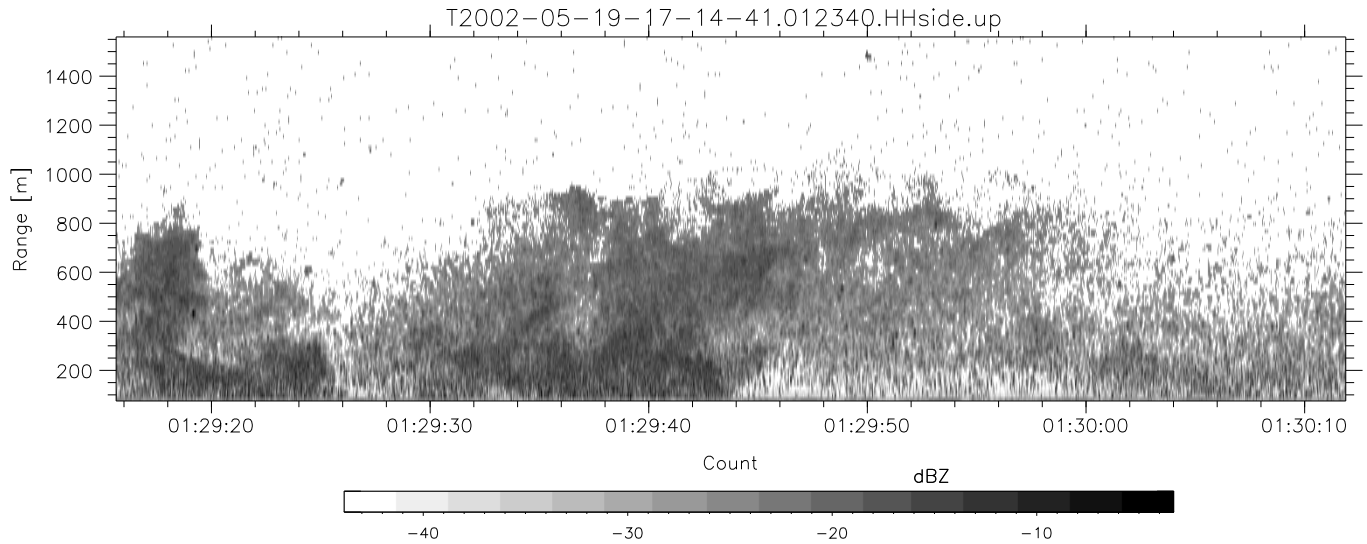
IHOP 2002 (dual-antenna config, modes 1,3,4,7) Data (cal: 49.0,50.0)

T2002-05-19-17-14-41 - PPMAG4	Min	Max	Mean	Std	Varc%	
IRIG:-2,Count: 00:00:00.0 to 02:28:29.64, Dur: 8909s	hhN(dB)	-68.11	-64.86	-66.44	-76.53	9.8
TimeLngth: 8909.64s, TimeInt: 40ms (25.0pps)	vvN(dB)	-69.07	-65.55	-67.04	-77.05	10.0
TimeCor=0.0s, DSPDif[ms]: mn=40,mx-min=0	hhL(dB)	-36.92	-15.09	-21.38	-24.11	53.3
PPS(min,max,std): 25,25,0.00	vvL(dB)	-39.42	-14.97	-25.57	-24.71	121.
Prof: 192 to 222934, NumProf(t/r): 222742/12551	ppN(m/s)	-12.33	12.68	-0.02	4.18	
ProcTime/Recs: 01:23:40-01:32:02/125510-138060	ppT(m/s)	-97.44	100.17	-0.12	33.00	
MxACQtime: 33ms; DRate: 139.9KB/s; Flags: 0, 0, 1	hh/vv(dB)	-NaN	66.14	20.06	42.27	1662
Pulse: 275ns, IFilt: 5.0MHz; ppPol: HH HV VV	vh/hh(dB)	-NaN	-2.72	-15.73	-10.72	316.
TxPol: HHVV, PRF: 20 10 20 10 kHz	hv/vv(dB)	-NaN	-11.98	-34.30	-30.23	255.
Range: Delay 75m, Spacing 15m, Gates 100	hn/jmp(dB)	-2.31	2.03	-0.10	-8.72	13.7
Ave. Pulses: 84, Rng/Prof Aspect@90m/s: 4.2	vn/jmp(dB)	-2.41	2.12	-0.10	-8.65	14.0



IHOP 2002 (dual-antenna config, modes 1,3,4,7) Data (cal: 49.0,50.0)

T2002-05-19-17-14-41 - PPMAG4	Min	Max	Mean	Std	Varc%	
IRIG:-2,Count: 00:00:00.0 to 02:28:29.64, Dur: 8909s	hhN (dB)	-68.11	-64.86	-66.44	-76.53	9.8
TimeLngth: 8909.64s, TimeInt: 40ms (25.0pps)	vvN (dB)	-69.07	-65.55	-67.04	-77.05	10.0
TimeCor=0.0s, DSPDif[ms]: mn=40,mx-min=0	hhL (dB)	-36.92	-15.09	-21.38	-24.11	53.3
PPS(min,max,std): 25,25,0.00	vvL (dB)	-39.42	-14.97	-25.57	-24.71	121.
Prof: 192 to 222934, NumProf(t/r): 222742/12551	ppN (m/s)	-12.33	12.68	-0.02	4.18	
ProcTime/Recs: 01:23:40-01:32:02/125510-138060	ppT (m/s)	-97.44	100.17	-0.12	33.00	
MxACQtime: 33ms; DRate: 139.9KB/s; Flags: 0, 0, 1	hh/vv (dB)	-NaN	66.14	20.06	42.27	1662
Pulse: 275ns, IFfilt: 5.0MHz; ppPol: HH HV VV	vh/hh (dB)	-NaN	-2.72	-15.73	-10.72	316.
TxPol: HHVV, PRF: 20 10 20 10 kHz	hv/vv (dB)	-NaN	-11.98	-34.30	-30.23	255.
Range: Delay 75m, Spacing 15m, Gates 100	hn_jmp (dB)	-2.31	2.03	-0.10	-8.72	13.7
Ave. Pulses: 84, Rng/Prof Aspect@90m/s: 4.2	vn_jmp (dB)	-2.41	2.12	-0.10	-8.65	14.0



IHOP 2002 (dual-antenna config, modes 1,3,4,7) Data (cal: 49.0,50.0)

T2002-05-19-17-14-41 - PPMAG4		Min	Max	Mean	Std	Varc%	
IRIG:-2,Count: 00:00:00.0 to 02:28:29.64, Dur: 8909s		hhN (dB)	-68.11	-64.86	-66.44	-76.53	9.8
TimeLngth: 8909.64s, TimeInt: 40ms (25.0pps)		vvN (dB)	-69.07	-65.55	-67.04	-77.05	10.0
TimeCor=0.0s, DSPDif[ms]: mn=40,mx-min=0		hhL (dB)	-36.92	-15.09	-21.38	-24.11	53.3
PPS(min,max,std): 25,25,0.00		vvL (dB)	-39.42	-14.97	-25.57	-24.71	121.
Prof: 192 to 222934, NumProf(t/r): 222742/12551		ppN (m/s)	-12.33	12.68	-0.02	4.18	
ProcTime/Recs: 01:23:40-01:32:02/125510-138060		ppT (m/s)	-97.44	100.17	-0.12	33.00	
MxACQtime: 33ms; DRate: 139.9KB/s; Flags: 0, 0, 1		hh/vv (dB)	-NaN	66.14	20.06	42.27	1662
Pulse: 275ns, IFfilt: 5.0MHz; ppPol: HH HV VV		vh/hh (dB)	-NaN	-2.72	-15.73	-10.72	316.
TxPol: HHVV, PRF: 20 10 20 10 kHz		hv/vv (dB)	-NaN	-11.98	-34.30	-30.23	255.
Range: Delay 75m, Spacing 15m, Gates 100		hn_jmp (dB)	-2.31	2.03	-0.10	-8.72	13.7
Ave. Pulses: 84, Rng/Prof Aspect@90m/s: 4.2		vn_jmp (dB)	-2.41	2.12	-0.10	-8.65	14.0