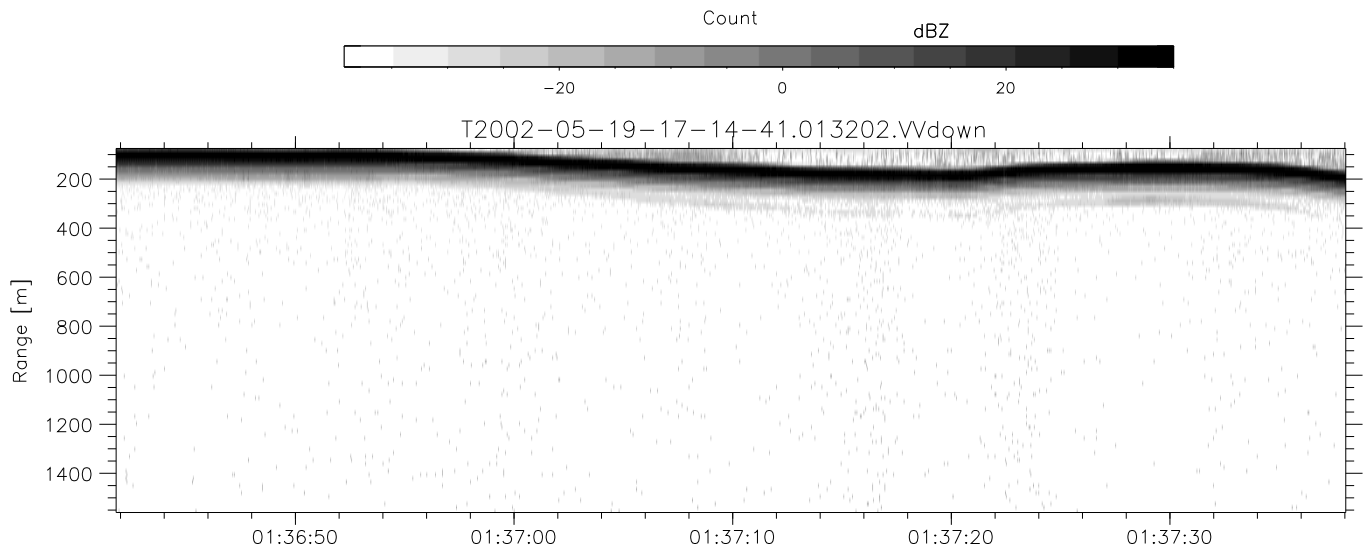
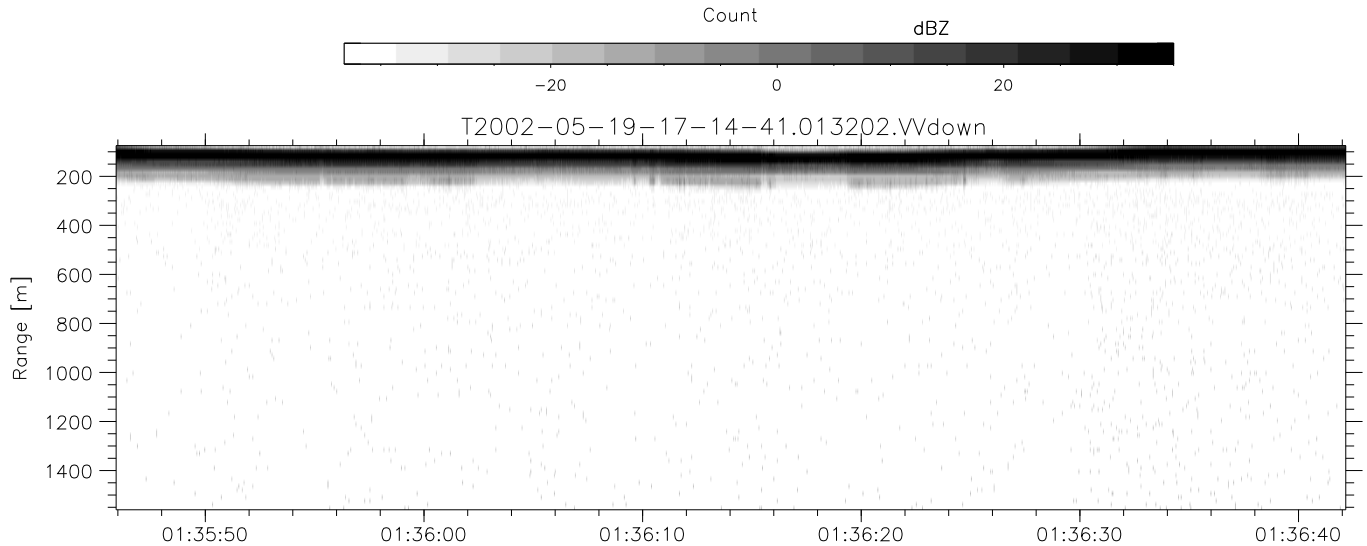
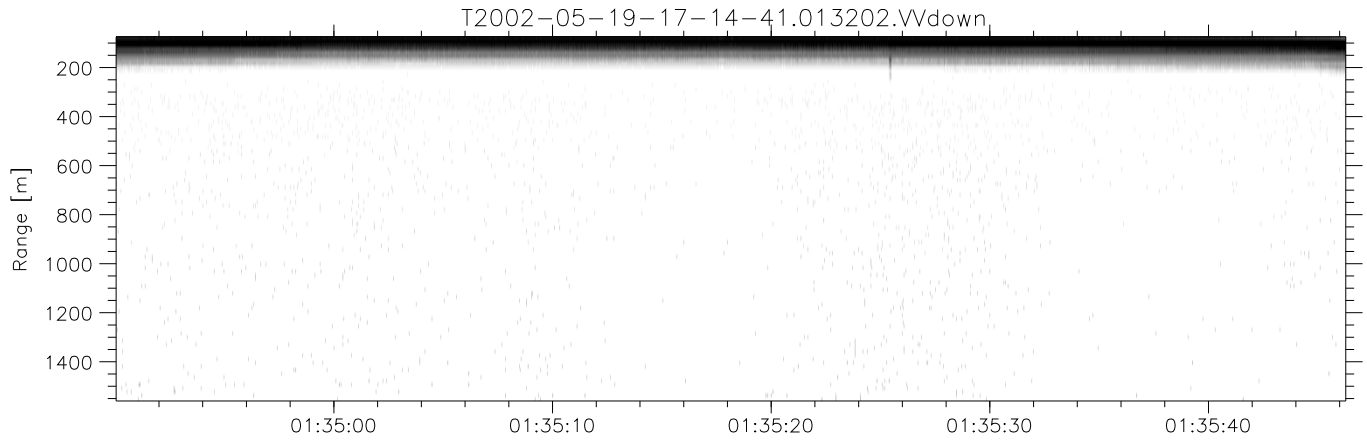


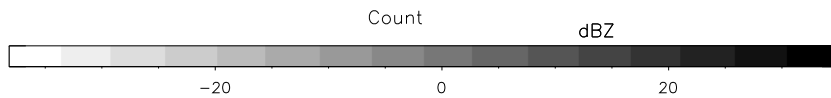
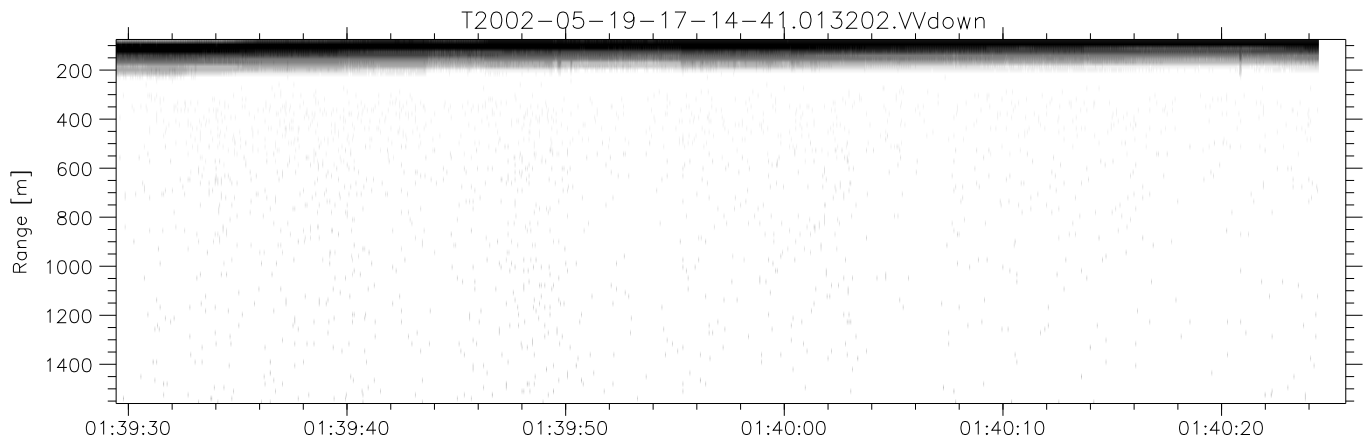
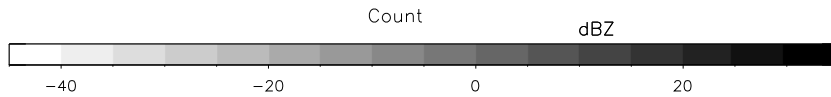
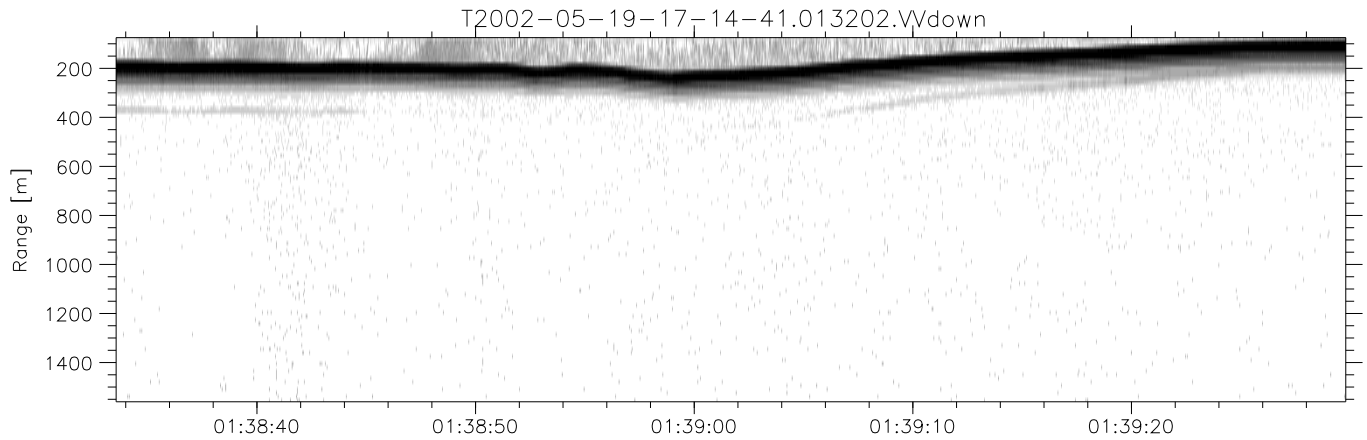
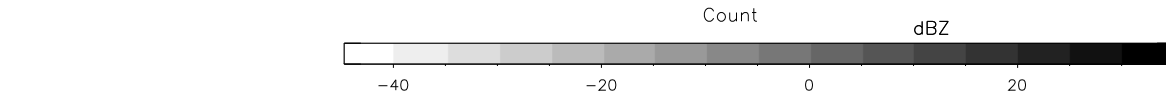
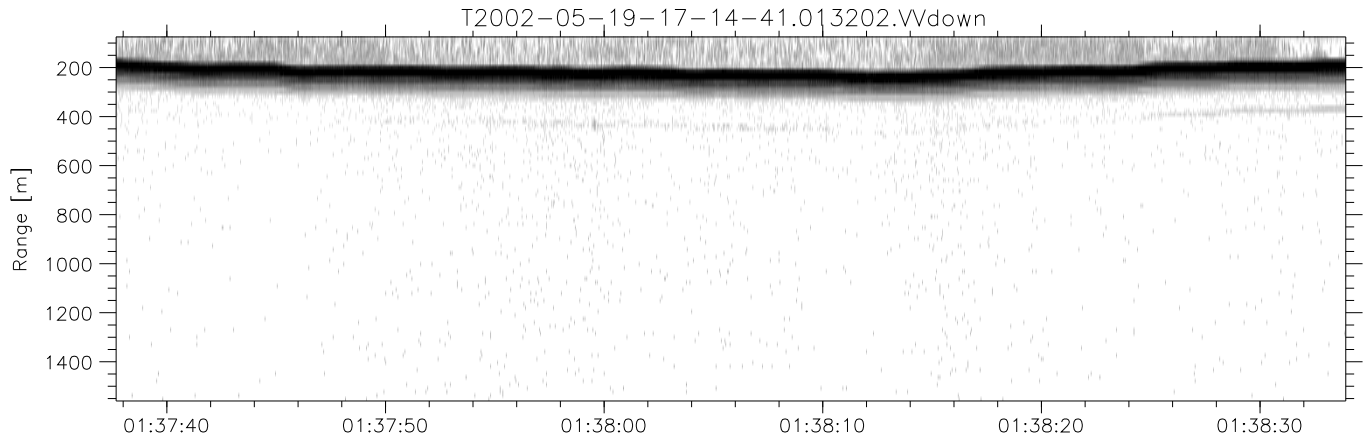
IHOP 2002 (dual-antenna config, modes 1,3,4,7) Data (cal: 49.0,50.0)

T2002-05-19-17-14-41 - PPMAG4	Min	Max	Mean	Std	Varc%	
IRIG:-2,Count: 00:00:00.0 to 02:28:29.64, Dur: 8909s	hhN(dB)	-68.37	-65.06	-66.51	-76.49	10.0
TimeLngth: 8909.64s, TimeInt: 40ms (25.0pps)	vvN(dB)	-68.81	-65.49	-67.09	-77.05	10.1
TimeCor=0.0s, DSPDif[ms]: mn=40,mx-min=0	hhL(dB)	-36.37	-16.29	-21.71	-24.11	57.6
PPS(min,max,std): 25,25,0.00	vvL(dB)	-40.57	-14.57	-24.68	-23.41	133.
Prof: 192 to 222934, NumProf(t/r): 222742/12551	ppN(m/s)	-12.39	12.35	-0.05	4.13	
ProcTime/Recs: 01:32:02-01:40:24/138061-150611	ppT(m/s)	-97.91	97.56	-0.36	32.59	
MxACQtime: 33ms; DRate: 139.9KB/s; Flags: 0, 0, 1	hh/vv(dB)	-NaN	60.74	19.17	40.09	1234
Pulse: 275ns, IFilt: 5.0MHz; ppPol: HH HV VV	vh/hh(dB)	-NaN	4.22	-11.24	-4.68	452.
TxPol: HHVV, PRF: 20 10 20 10 kHz	hv/vv(dB)	-NaN	-15.08	-36.66	-32.71	248.
Range: Delay 75m, Spacing 15m, Gates 100	hnjmp(dB)	-1.92	2.69	0.18	-8.31	14.2
Ave. Pulses: 84, Rng/Prof Aspect@90m/s: 4.2	vnjmp(dB)	-2.03	2.31	0.18	-8.36	14.0



IHOP 2002 (dual-antenna config, modes 1,3,4,7) Data (cal: 49.0,50.0)

T2002-05-19-17-14-41 - PPMAG4	Min	Max	Mean	Std	Varc%	
IRIG:-2,Count: 00:00:00.0 to 02:28:29.64, Dur: 8909s	hhN(dB)	-68.37	-65.06	-66.51	-76.49	10.0
TimeLngth: 8909.64s, TimeInt: 40ms (25.0pps)	vvN(dB)	-68.81	-65.49	-67.09	-77.05	10.1
TimeCor=0.0s, DSPDif[ms]: mn=40,mx-min=0	hhL(dB)	-36.37	-16.29	-21.71	-24.11	57.6
PPS(min,max,std): 25,25,0.00	vvL(dB)	-40.57	-14.57	-24.68	-23.41	133.
Prof: 192 to 222934, NumProf(t/r): 222742/12551	ppN(m/s)	-12.39	12.35	-0.05	4.13	
ProcTime/Recs: 01:32:02-01:40:24/138061-150611	ppT(m/s)	-97.91	97.56	-0.36	32.59	
MxACQtime: 33ms; DRate: 139.9KB/s; Flags: 0, 0, 1	hh/vv(dB)	-NaN	60.74	19.17	40.09	1234
Pulse: 275ns, IFfilt: 5.0MHz; ppPol: HH HV VV	vh/hh(dB)	-NaN	4.22	-11.24	-4.68	452.
TxPol: HHVV, PRF: 20 10 20 10 kHz	hv/vv(dB)	-NaN	-15.08	-36.66	-32.71	248.
Range: Delay 75m, Spacing 15m, Gates 100	hn/jmp(dB)	-1.92	2.69	0.18	-8.31	14.2
Ave. Pulses: 84, Rng/Prof Aspect@90m/s: 4.2	vn/jmp(dB)	-2.03	2.31	0.18	-8.36	14.0



IHOP 2002 (dual-antenna config, modes 1,3,4,7) Data (cal: 49.0,50.0)

T2002-05-19-17-14-41 - PPMAG4	Min	Max	Mean	Std	Varc%
IRIG:-2,Count: 00:00:00.0 to 02:28:29.64, Dur: 8909s	-68.37	-65.06	-66.51	-76.49	10.0
TimeLngth: 8909.64s, TimeInt: 40ms (25.0pps)	-68.81	-65.49	-67.09	-77.05	10.1
TimeCor=0.0s, DSPDif[ms]: mn=40,mx-min=0	-36.37	-16.29	-21.71	-24.11	57.6
PPS(min,max,std): 25,25,0.00	-40.57	-14.57	-24.68	-23.41	133.
Prof: 192 to 222934, NumProf(t/r): 222742/12551	ppN(m/s)	-12.39	12.35	-0.05	4.13
ProcTime/Recs: 01:32:02-01:40:24/138061-150611	ppT(m/s)	-97.91	97.56	-0.36	32.59
MxACQtime: 33ms; DRate: 139.9KB/s; Flags: 0, 0, 1	hh/vv(dB)	-NaN	60.74	19.17	40.09 1234
Pulse: 275ns, IFfilt: 5.0MHz; ppPol: HH HV VV	vh/hh(dB)	-NaN	4.22	-11.24	-4.68 452.
TxPol: HHVV, PRF: 20 10 20 10 kHz	hv/vv(dB)	-NaN	-15.08	-36.66	-32.71 248.
Range: Delay 75m, Spacing 15m, Gates 100	hnjmp(dB)	-1.92	2.69	0.18	-8.31 14.2
Ave. Pulses: 84, Rng/Prof Aspect@90m/s: 4.2	vnjmp(dB)	-2.03	2.31	0.18	-8.36 14.0