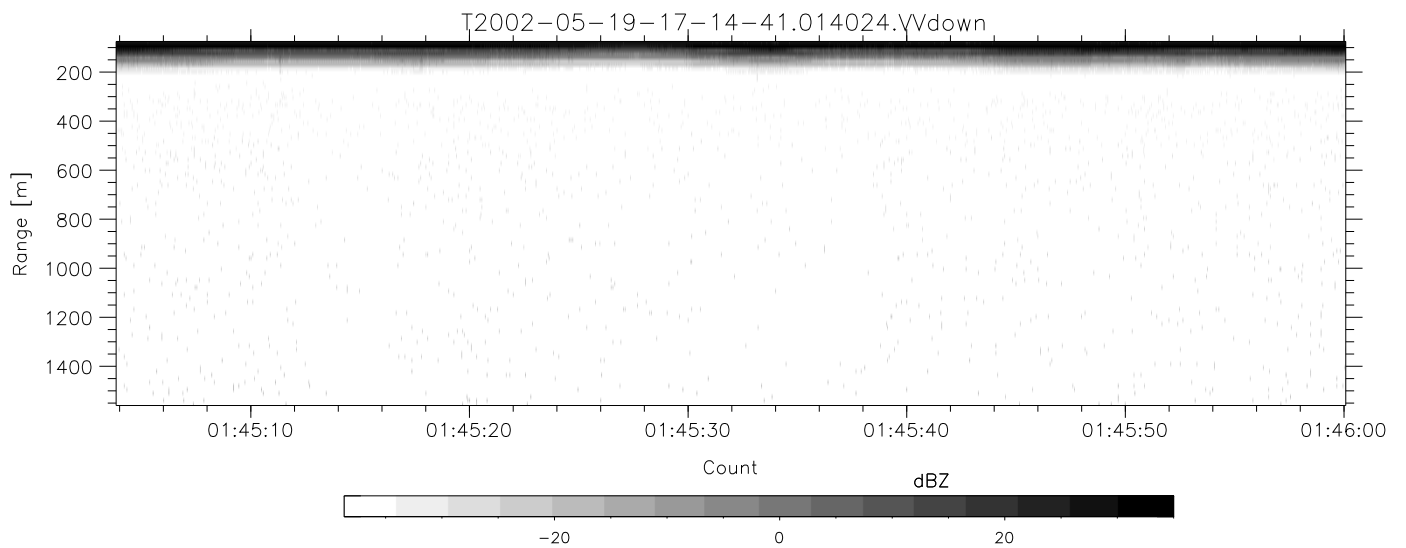
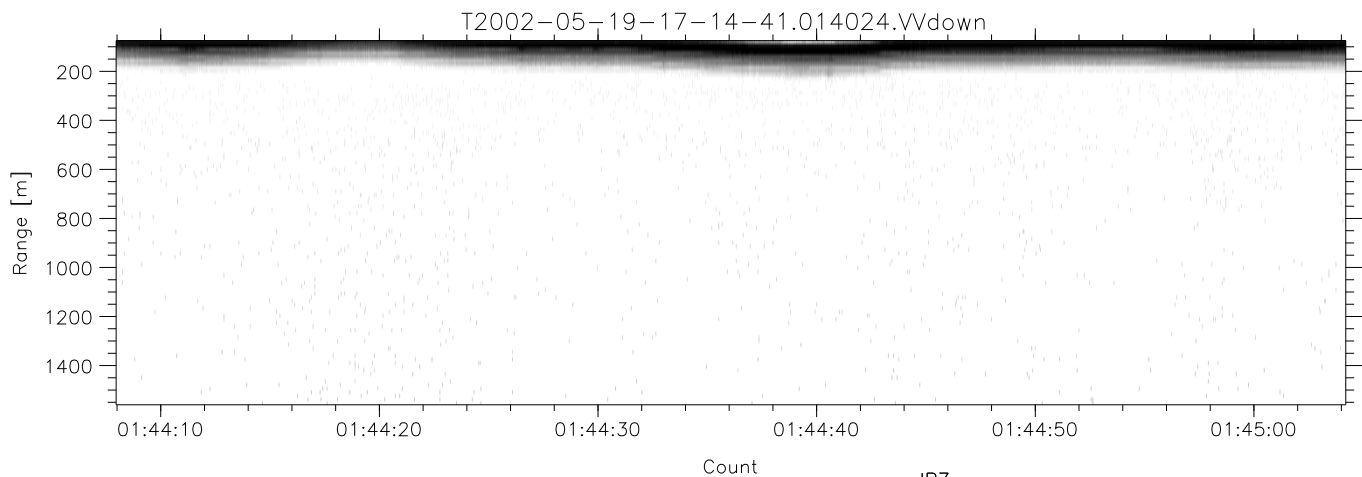
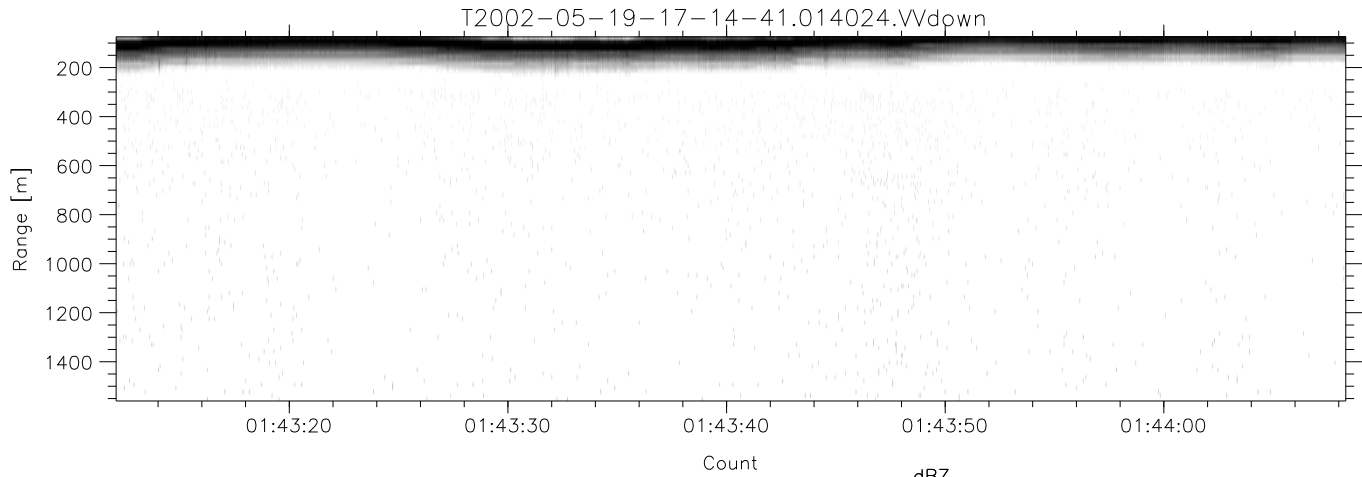


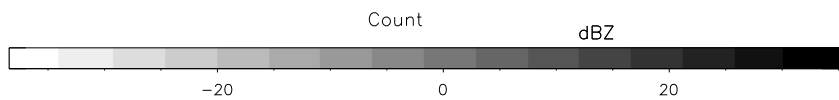
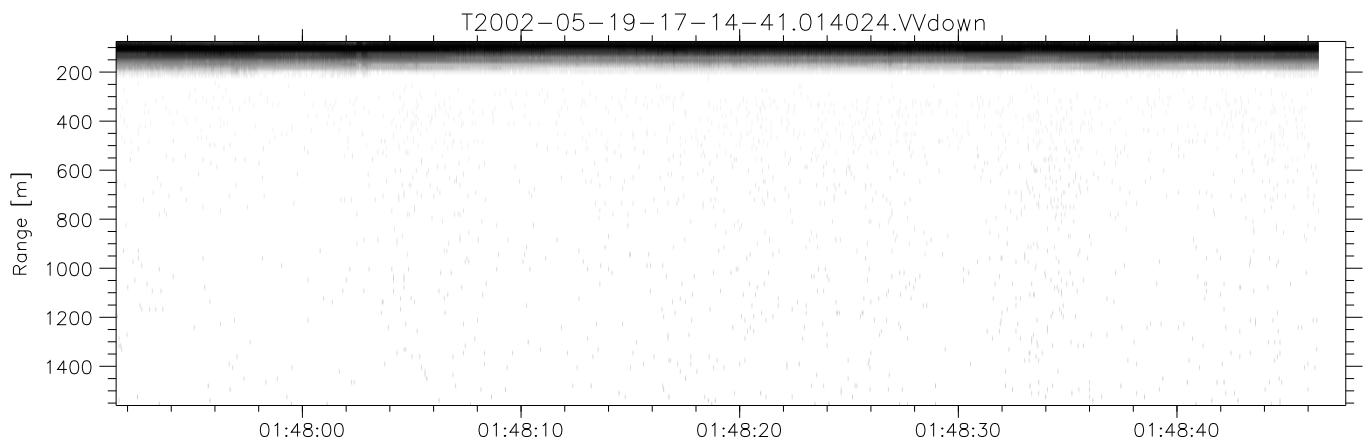
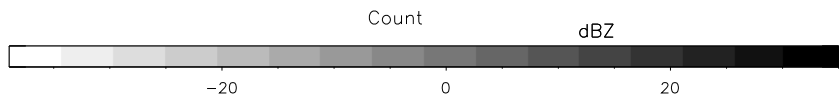
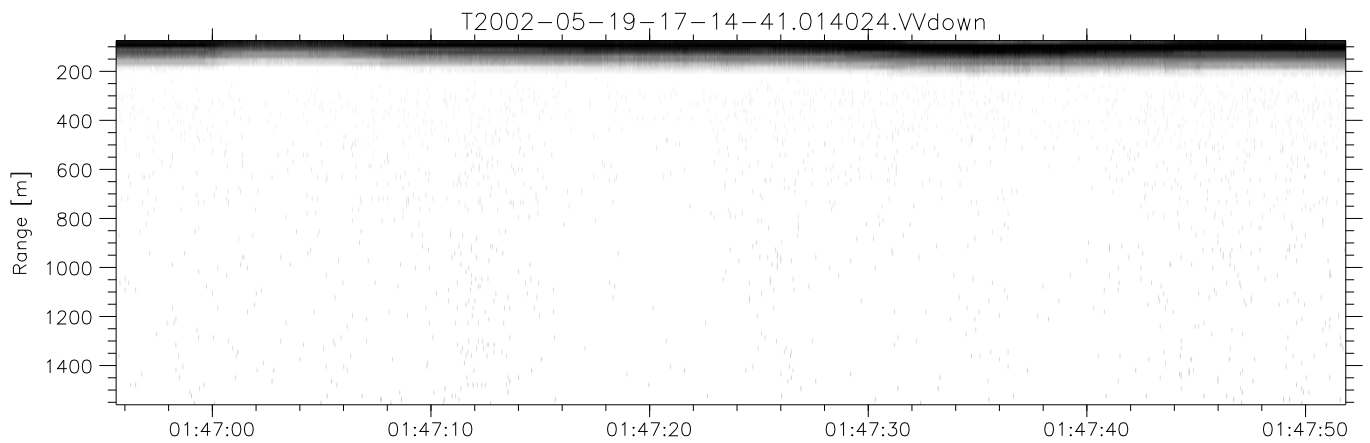
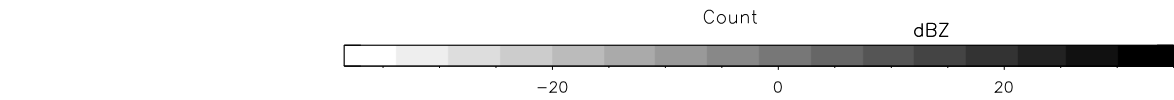
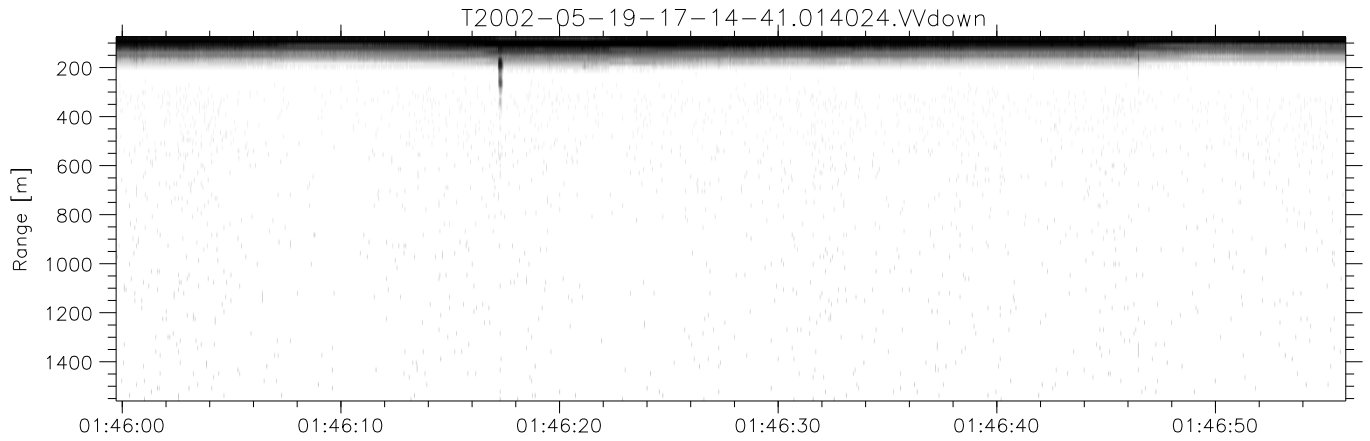
IHOP 2002 (dual-antenna config, modes 1,3,4,7) Data (cal: 49.0,50.0)

T2002-05-19-17-14-41 - PPMAG4						
IRIG:-2,Count: 00:00:00.0 to 02:28:29.64, Dur: 8909s	hhN(dB)	Min	Max	Mean	Std	Varc%
TimeLngth: 8909.64s, TimeInt: 40ms (25.0pps)	vvN(dB)	-68.40	-65.09	-66.60	-76.56	10.1
TimeCor=0.0s, DSPDif[ms]: mn=40,mx-min=0	hhL(dB)	-69.38	-65.49	-67.18	-77.11	10.2
PPS(min,max,std): 25,25,0.00	vvL(dB)	-38.29	-15.58	-22.37	-24.54	60.7
Prof: 192 to 222934, NumProf(t/r): 222742/12551	ppN(m/s)	-39.64	-15.07	-24.47	-23.38	128.
ProcTime/Recs: 01:40:24-01:48:46/150612-163162	ppT(m/s)	-12.10	12.21	-0.00	4.14	
MxACQtime: 33ms; DRate: 139.9KB/s; Flags: 0, 0, 1	hh/vv(dB)	-95.59	96.43	-0.04	32.69	
Pulse: 275ns, IFfilt: 5.0MHz; ppPol: HH HV VV	vh/vh(dB)	-NaN	67.67	21.87	43.35	1405
TxPol: HHVV, PRF: 20 10 20 10 kHz	hv/hv(dB)	-NaN	-2.29	-15.85	-11.38	279.
Range: Delay 75m, Spacing 15m, Gates 100	hv/vv(dB)	-NaN	-12.93	-32.57	-29.89	185.
Ave. Pulses: 84, Rng/Prof Aspect@90m/s: 4.2	hn/jmp(dB)	-2.38	2.13	-0.10	-8.64	14.0
	vn/jmp(dB)	-2.59	2.12	-0.12	-8.64	14.0



IHOP 2002 (dual-antenna config, modes 1,3,4,7) Data (cal: 49.0,50.0)

T2002-05-19-17-14-41 - PPMAG4	Min	Max	Mean	Std	Varc%	
IRIG:-2,Count: 00:00:00.0 to 02:28:29.64, Dur: 8909s	hhN(dB)	-68.40	-65.09	-66.60	-76.56	10.1
TimeLngth: 8909.64s, TimeInt: 40ms (25.0pps)	vvN(dB)	-69.38	-65.49	-67.18	-77.11	10.2
TimeCor=0.0s, DSPDif[ms]: mn=40,mx-min=0	hhL(dB)	-38.29	-15.58	-22.37	-24.54	60.7
PPS(min,max,std): 25,25,0.00	vvL(dB)	-39.64	-15.07	-24.47	-23.38	128.
Prof: 192 to 222934, NumProf(t/r): 222742/12551	ppN(m/s)	-12.10	12.21	-0.00	4.14	
ProcTime/Recs: 01:40:24-01:48:46/150612-163162	ppT(m/s)	-95.59	96.43	-0.04	32.69	
MxACQtime: 33ms; DRate: 139.9KB/s; Flags: 0, 0, 1	hh/vv(dB)	-NaN	67.67	21.87	43.35	1405
Pulse: 275ns, IFilt: 5.0MHz; ppPol: HH HV VV	vh/hh(dB)	-NaN	-2.29	-15.85	-11.38	279.
TxPol: HHVV, PRF: 20 10 20 10 kHz	hv/vv(dB)	-NaN	-12.93	-32.57	-29.89	185.
Range: Delay 75m, Spacing 15m, Gates 100	hnjmp(dB)	-2.38	2.13	-0.10	-8.64	14.0
Ave. Pulses: 84, Rng/Prof Aspect@90m/s: 4.2	vnjmp(dB)	-2.59	2.12	-0.12	-8.64	14.0



IHOP 2002 (dual-antenna config, modes 1,3,4,7) Data (cal: 49.0,50.0)

T2002-05-19-17-14-41 - PPMAG4						
IRIG:-2,Count: 00:00:00.0 to 02:28:29.64, Dur: 8909s	hhN(dB)	Min	Max	Mean	Std	Varc%
TimeLngth: 8909.64s, TimeInt: 40ms (25.0pps)	vvN(dB)	-68.40	-65.09	-66.60	-76.56	10.1
TimeCor=0.0s, DSPDif[ms]: mn=40,mx-min=0	hhL(dB)	-69.38	-65.49	-67.18	-77.11	10.2
PPS(min,max,std): 25,25,0.00	vvL(dB)	-38.29	-15.58	-22.37	-24.54	60.7
Prof: 192 to 222934, NumProf(t/r): 222742/12551	ppN(m/s)	-39.64	-15.07	-24.47	-23.38	128.
ProcTime/Recs: 01:40:24-01:48:46/150612-163162	ppT(m/s)	-12.10	12.21	-0.00	4.14	
MxAcQtime: 33ms; DRate: 139.9KB/s; Flags: 0, 0, 1	hh/vv(dB)	-95.59	96.43	-0.04	32.69	
Pulse: 275ns, IFilt: 5.0MHz; ppPol: HH HV VV	vh/vh(dB)	-NaN	67.67	21.87	43.35	1405
TxPol: HHVV, PRF: 20 10 20 10 kHz	hv/hv(dB)	-NaN	-2.29	-15.85	-11.38	279.
Range: Delay 75m, Spacing 15m, Gates 100	hv/vv(dB)	-NaN	-12.93	-32.57	-29.89	185.
Ave. Pulses: 84, Rng/Prof Aspect@90m/s: 4.2	hn/jmp(dB)	-2.38	2.13	-0.10	-8.64	14.0
	vn/jmp(dB)	-2.59	2.12	-0.12	-8.64	14.0