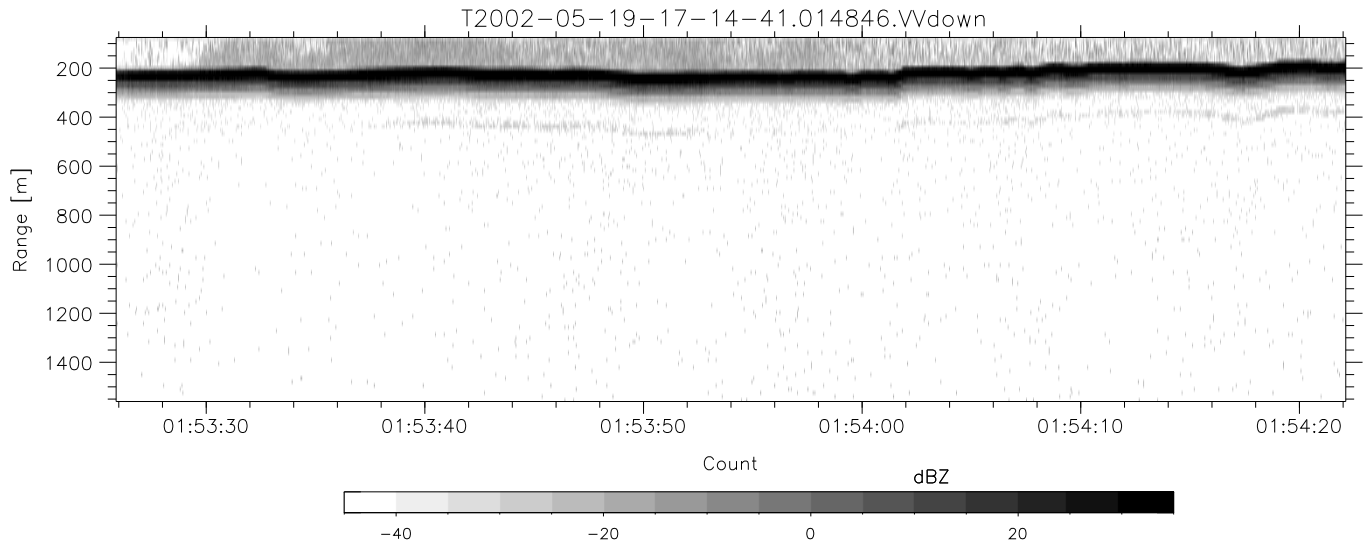
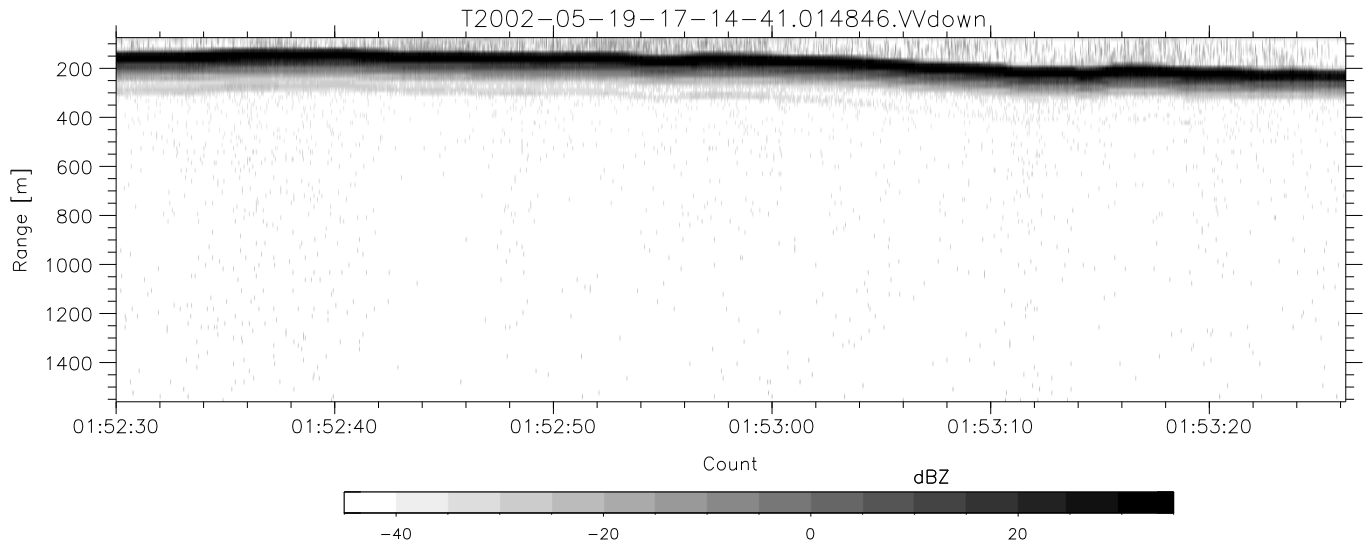
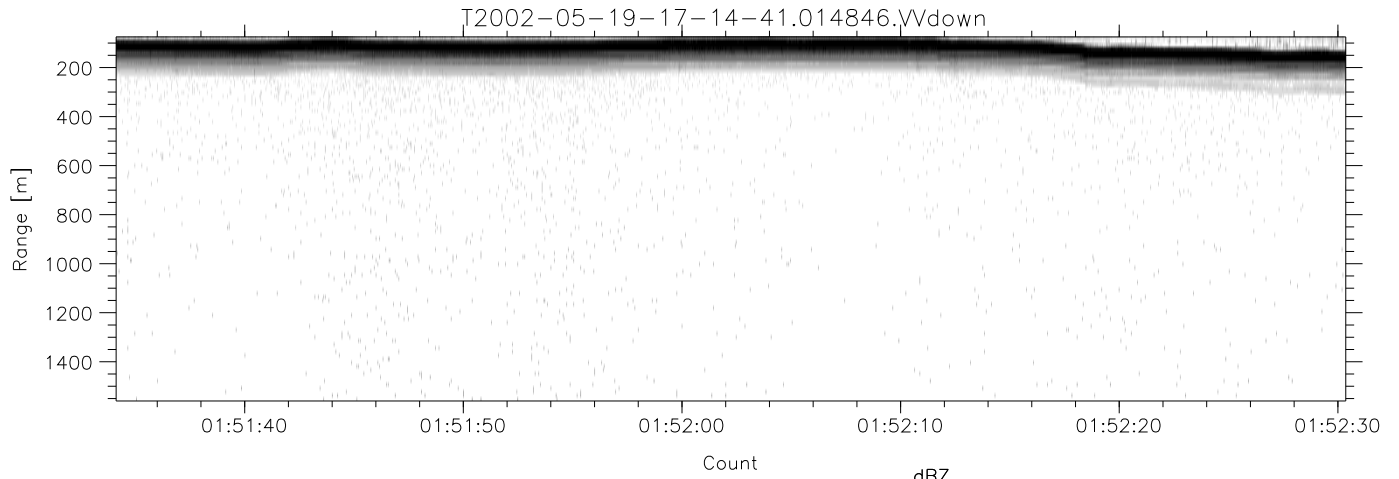


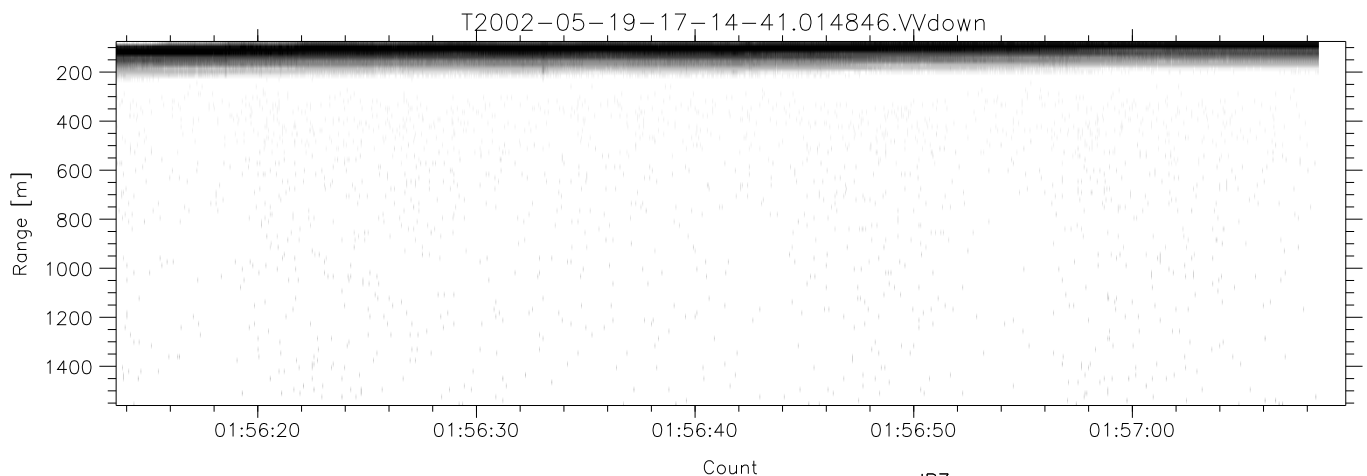
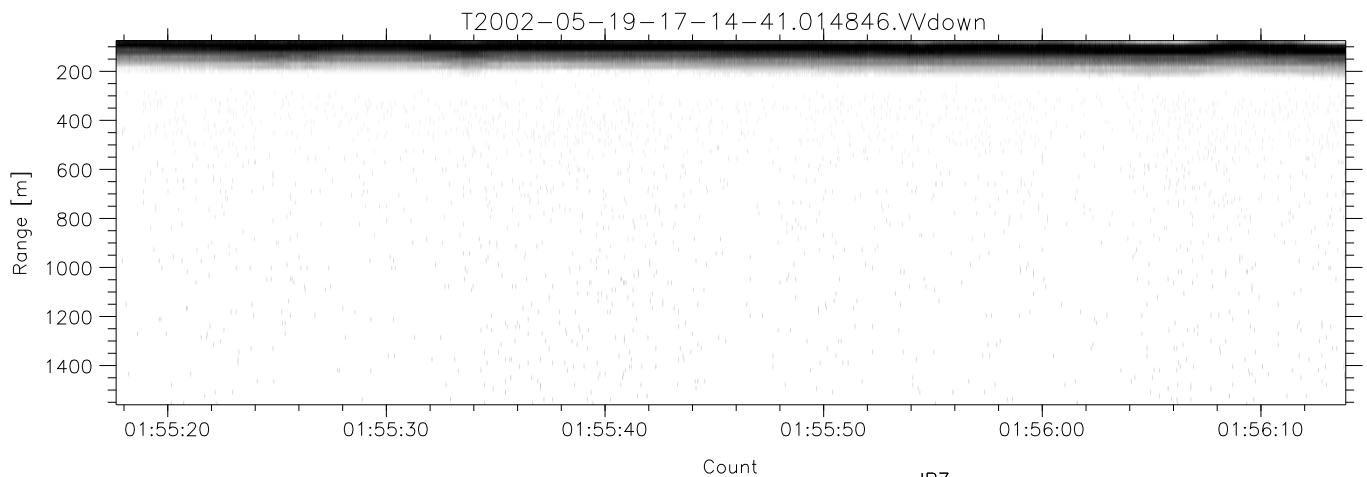
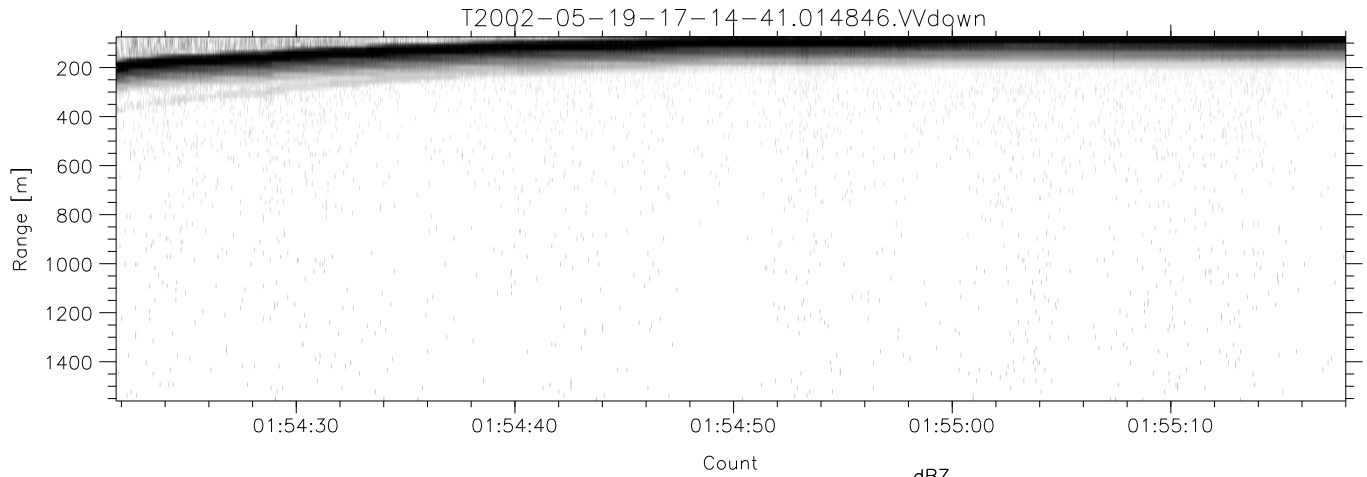
IHOP 2002 (dual-antenna config, modes 1,3,4,7) Data (cal: 49.0,50.0)

T2002-05-19-17-14-41 - PPMAG4	Min	Max	Mean	Std	Varc%	
IRIG:-2,Count: 00:00:00.0 to 02:28:29.64, Dur: 8909s	hhN(dB)	-68.58	-64.80	-66.67	-76.68	10.0
TimeLngth: 8909.64s, TimeInt: 40ms (25.0pps)	vvN(dB)	-69.16	-65.45	-67.25	-77.18	10.2
TimeCor=0.0s, DSPDif[ms]: mn=40,mx-min=0	hhL(dB)	-38.12	-16.08	-22.91	-24.38	71.2
PPS(min,max,std): 25,25,0.00	vvL(dB)	-39.51	-14.58	-24.92	-23.60	135.
Prof: 192 to 222934, NumProf(t/r): 222742/12551	ppN(m/s)	-12.45	12.92	-0.01	4.15	
ProcTime/Recs: 01:48:46-01:57:08/163163-175713	ppT(m/s)	-98.34	102.04	-0.06	32.81	
MxAcQtime: 33ms; DRate: 139.9KB/s; Flags: 0, 0, 1	hh/vv(dB)	-NaN	62.74	17.77	38.74	1249
Pulse: 275ns, IFfilt: 5.0MHz; ppPol: HH HV VV	vh/hh(dB)	-NaN	-5.27	-14.16	-11.37	190.
TxPol: HHVV, PRF: 20 10 20 10 kHz	hv/vv(dB)	-NaN	-23.57	-38.46	-36.50	156.
Range: Delay 75m, Spacing 15m, Gates 100	hnjmp(dB)	-1.99	2.47	0.17	-8.38	14.0
Ave. Pulses: 84, Rng/Prof Aspect@90m/s: 4.2	vnjmp(dB)	-2.17	2.38	0.19	-8.26	14.3



IHOP 2002 (dual-antenna config, modes 1,3,4,7) Data (cal: 49.0,50.0)

T2002-05-19-17-14-41 - PPMAG4	Min	Max	Mean	Std	Varc%	
IRIG:-2,Count: 00:00:00.0 to 02:28:29.64, Dur: 8909s	hhN(dB)	-68.58	-64.80	-66.67	-76.68	10.0
TimeLngth: 8909.64s, TimeInt: 40ms (25.0pps)	vvN(dB)	-69.16	-65.45	-67.25	-77.18	10.2
TimeCor=0.0s, DSPDif[ms]: mn=40,mx-min=0	hhL(dB)	-38.12	-16.08	-22.91	-24.38	71.2
PPS(min,max,std): 25,25,0.00	vvL(dB)	-39.51	-14.58	-24.92	-23.60	135.
Prof: 192 to 222934, NumProf(t/r): 222742/12551	ppN(m/s)	-12.45	12.92	-0.01	4.15	
ProcTime/Recs: 01:48:46-01:57:08/163163-175713	ppT(m/s)	-98.34	102.04	-0.06	32.81	
MxACQtime: 33ms; DRate: 139.9KB/s; Flags: 0, 0, 1	hh/vv(dB)	-NaN	62.74	17.77	38.74	1249
Pulse: 275ns, IFfilt: 5.0MHz; ppPol: HH HV VV	vh/hh(dB)	-NaN	-5.27	-14.16	-11.37	190.
TxPol: HHVV, PRF: 20 10 20 10 kHz	hv/vv(dB)	-NaN	-23.57	-38.46	-36.50	156.
Range: Delay 75m, Spacing 15m, Gates 100	hnjmp(dB)	-1.99	2.47	0.17	-8.38	14.0
Ave. Pulses: 84, Rng/Prof Aspect@90m/s: 4.2	vnjmp(dB)	-2.17	2.38	0.19	-8.26	14.3



IHOP 2002 (dual-antenna config, modes 1,3,4,7) Data (cal: 49.0,50.0)

T2002-05-19-17-14-41 - PPMAG4	Min	Max	Mean	Std	Varc%	
IRIG:-2,Count: 00:00:00.0 to 02:28:29.64, Dur: 8909s	hhN(dB)	-68.58	-64.80	-66.67	-76.68	10.0
TimeLngth: 8909.64s, TimeInt: 40ms (25.0pps)	vvN(dB)	-69.16	-65.45	-67.25	-77.18	10.2
TimeCor=0.0s, DSPDif[ms]: mn=40,mx-min=0	hhL(dB)	-38.12	-16.08	-22.91	-24.38	71.2
PPS(min,max,std): 25,25,0.00	vvL(dB)	-39.51	-14.58	-24.92	-23.60	135.
Prof: 192 to 222934, NumProf(t/r): 222742/12551	ppN(m/s)	-12.45	12.92	-0.01	4.15	
ProcTime/Recs: 01:48:46-01:57:08/163163-175713	ppT(m/s)	-98.34	102.04	-0.06	32.81	
MxACQtime: 33ms; DRate: 139.9KB/s; Flags: 0, 0, 1	hh/vv(dB)	-NaN	62.74	17.77	38.74	1249
Pulse: 275ns, IFilt: 5.0MHz; ppPol: HH HV VV	vh/hh(dB)	-NaN	-5.27	-14.16	-11.37	190.
TxPol: HHVV, PRF: 20 10 20 10 kHz	hv/vv(dB)	-NaN	-23.57	-38.46	-36.50	156.
Range: Delay 75m, Spacing 15m, Gates 100	hnjmp(dB)	-1.99	2.47	0.17	-8.38	14.0
Ave. Pulses: 84, Rng/Prof Aspect@90m/s: 4.2	vnjmp(dB)	-2.17	2.38	0.19	-8.26	14.3