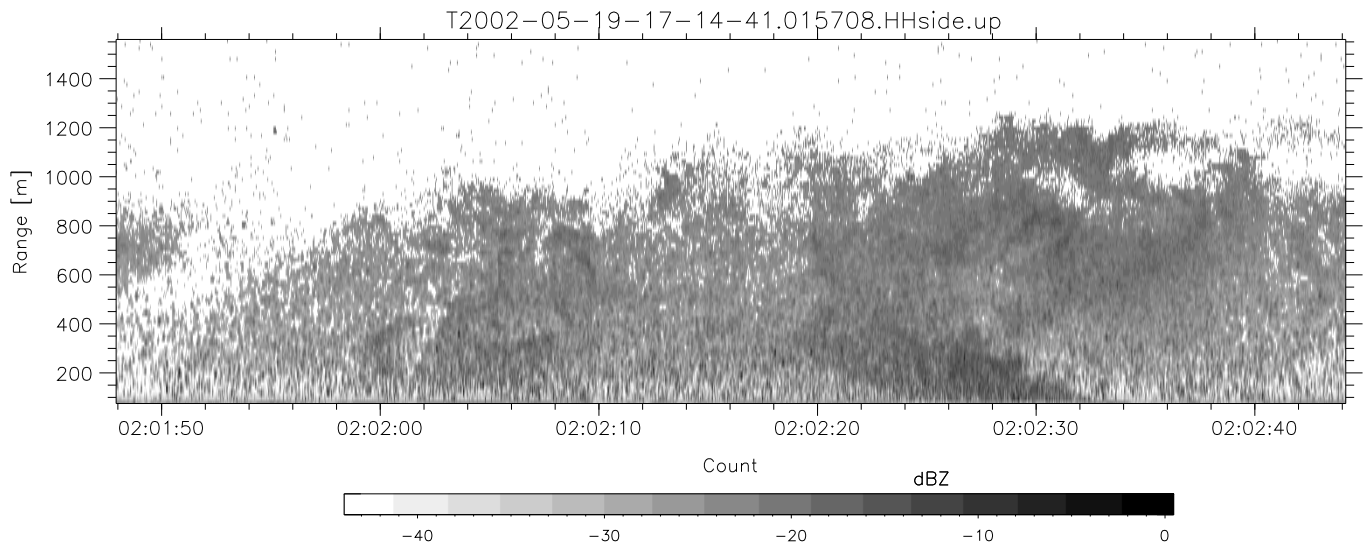
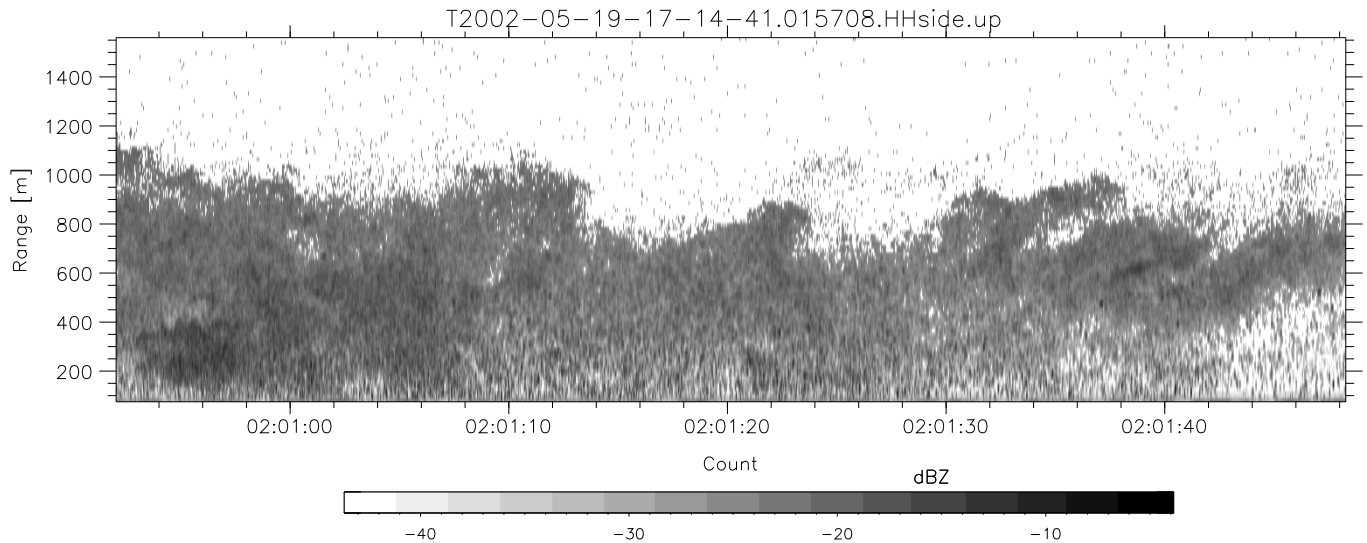
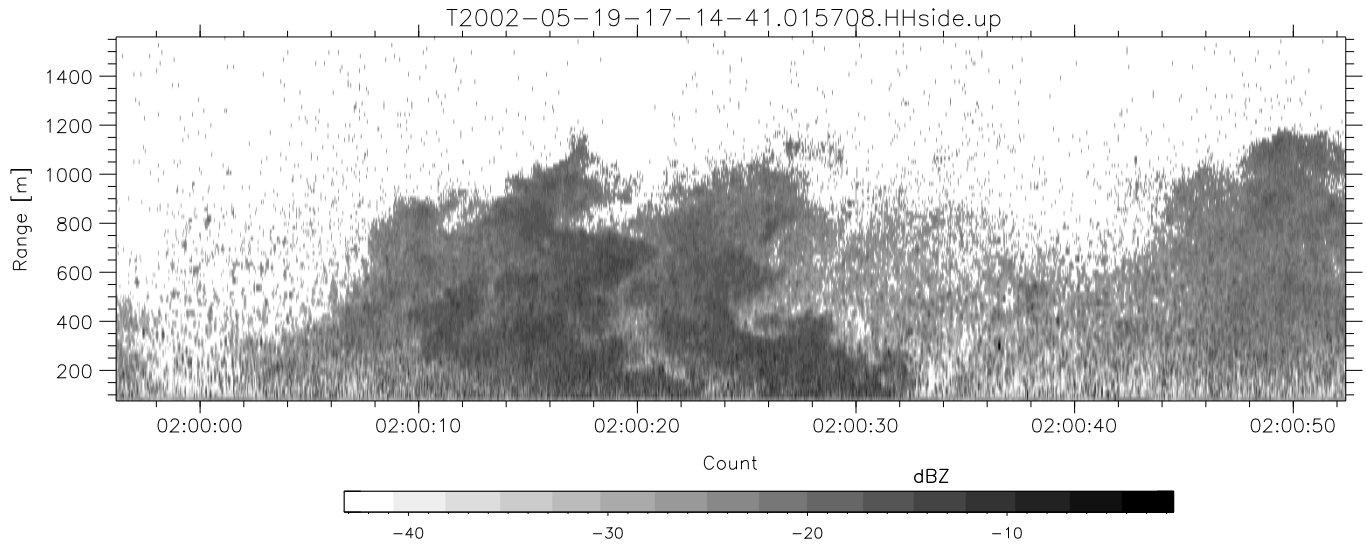


IHOP 2002 (dual-antenna config, modes 1,3,4,7) Data (cal: 49.0,50.0)

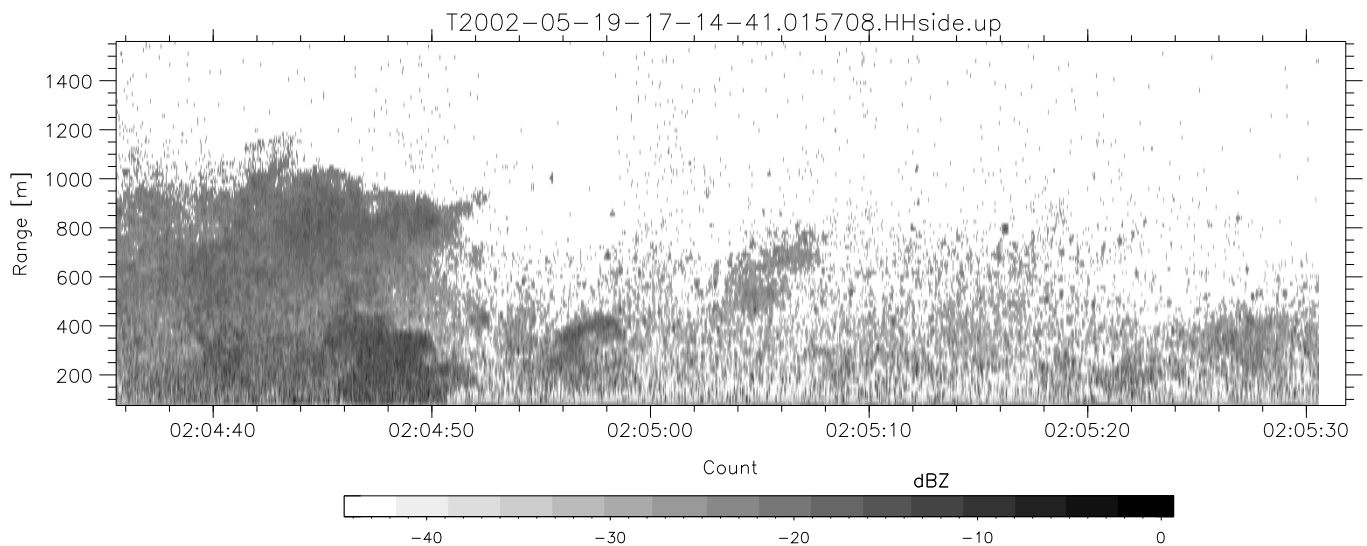
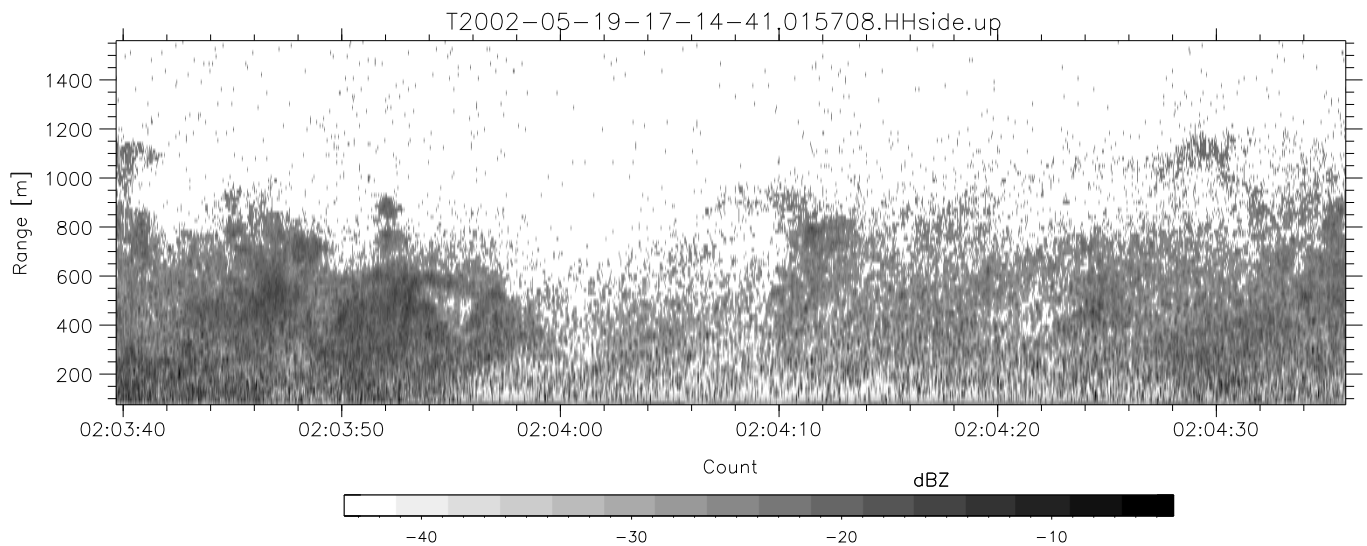
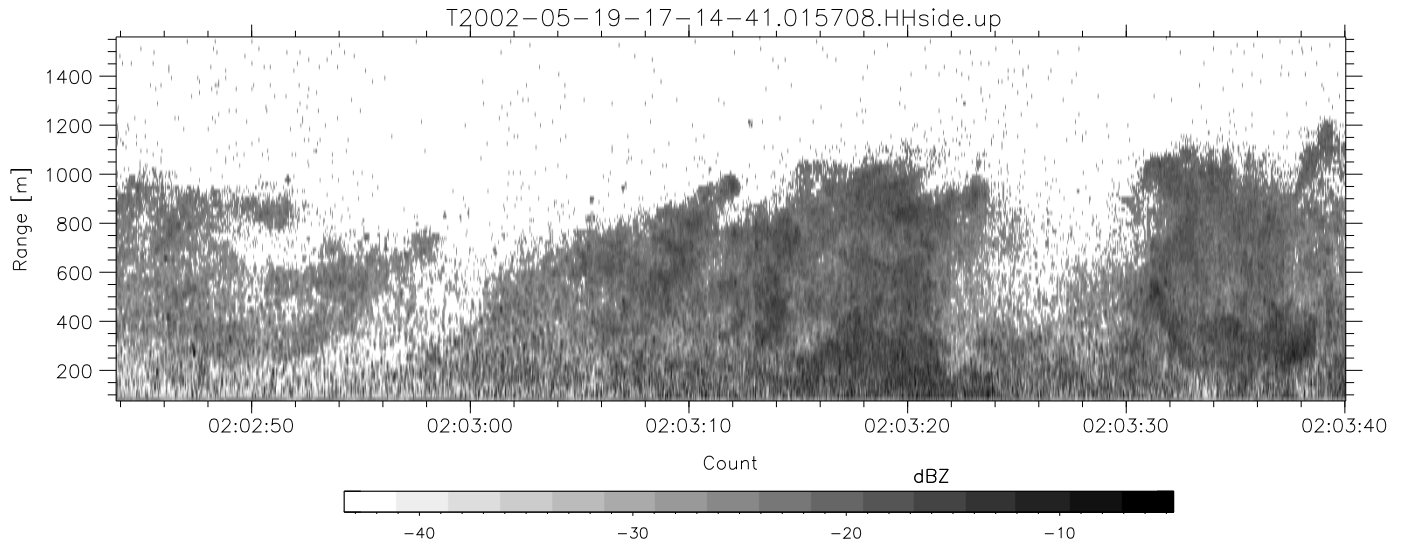
| | | | | | | |
|--|-------------|--------|--------|--------|--------|------|
| T2002-05-19-17-14-41 - PPMAG4 | Min | Max | Mean | Std | Varc% | |
| IRIG:-2,Count: 00:00:00.0 to 02:28:29.64, Dur: 8909s | hhN (dB) | -68.44 | -65.13 | -66.75 | -76.73 | 10.0 |
| TimeLngth: 8909.64s, TimeInt: 40ms (25.0pps) | vvN (dB) | -68.98 | -65.83 | -67.34 | -77.24 | 10.2 |
| TimeCor=0.0s, DSPDif[ms]: mn=40,mx-min=0 | hhL (dB) | -37.79 | -15.24 | -23.10 | -24.79 | 67.8 |
| PPS(min,max,std): 25,25,0.00 | vvL (dB) | -38.88 | -13.90 | -24.85 | -23.44 | 138. |
| Prof: 192 to 222934, NumProf(t/r): 222742/12551 | ppN (m/s) | -12.50 | 12.31 | -0.03 | 4.13 | |
| ProcTime/Recs: 01:57:08-02:05:30/175714-188264 | ppT (m/s) | -98.73 | 97.22 | -0.27 | 32.59 | |
| MxACQtime: 33ms; DRate: 139.9KB/s; Flags: 0, 0, 1 | hh/vv (dB) | -NaN | 68.10 | 21.76 | 43.95 | 1654 |
| Pulse: 275ns, IFilt: 5.0MHz; ppPol: HH HV VV | vh/hh (dB) | -50.93 | -19.50 | -27.54 | -26.77 | 119. |
| TxPol: HHVV, PRF: 20 10 20 10 kHz | hv/vv (dB) | -NaN | -14.69 | -31.94 | -29.98 | 156. |
| Range: Delay 75m, Spacing 15m, Gates 100 | hn_jmp (dB) | -2.29 | 2.75 | -0.09 | -8.56 | 14.2 |
| Ave. Pulses: 84, Rng/Prof Aspect@90m/s: 4.2 | vn_jmp (dB) | -2.54 | 2.38 | -0.10 | -8.49 | 14.5 |



IHOP 2002 (dual-antenna config, modes 1,3,4,7) Data (cal: 49.0,50.0)

T2002-05-19-17-14-41 - PPMAG4
 IRIG:-2,Count: 00:00:00.0 to 02:28:29.64, Dur: 8909s
 TimeLngth: 8909.64s, TimeInt: 40ms (25.0pps)
 TimeCor=0.0s, DSPDif[ms]: mn=40,mx-min=0
 PPS(min,max,std): 25,25,0.00
 Prof: 192 to 222934, NumProf(t/r): 222742/12551
 ProcTime/Recs: 01:57:08-02:05:30/175714-188264
 MxACQtime: 33ms; DRate: 139.9KB/s; Flags: 0, 0, 1
 Pulse: 275ns, IFfilt: 5.0MHz; ppPol: HH HV VV
 TxPol: HHVV, PRF: 20 10 20 10 kHz
 Range: Delay 75m, Spacing 15m, Gates 100
 Ave. Pulses: 84, Rng/Prof Aspect@90m/s: 4.2

| | Min | Max | Mean | Std | Varc% |
|-----------|--------|--------|--------|--------|-------|
| hhN(dB) | -68.44 | -65.13 | -66.75 | -76.73 | 10.0 |
| vvN(dB) | -68.98 | -65.83 | -67.34 | -77.24 | 10.2 |
| hhL(dB) | -37.79 | -15.24 | -23.10 | -24.79 | 67.8 |
| vvL(dB) | -38.88 | -13.90 | -24.85 | -23.44 | 138. |
| ppN(m/s) | -12.50 | 12.31 | -0.03 | 4.13 | |
| ppT(m/s) | -98.73 | 97.22 | -0.27 | 32.59 | |
| hh/vv(dB) | -NaN | 68.10 | 21.76 | 43.95 | 1654 |
| vh/hh(dB) | -50.93 | -19.50 | -27.54 | -26.77 | 119. |
| hv/vv(dB) | -NaN | -14.69 | -31.94 | -29.98 | 156. |
| hnjmp(dB) | -2.29 | 2.75 | -0.09 | -8.56 | 14.2 |
| vnjmp(dB) | -2.54 | 2.38 | -0.10 | -8.49 | 14.5 |



IHOP 2002 (dual-antenna config, modes 1,3,4,7) Data (cal: 49.0,50.0)

| | Min | Max | Mean | Std | Varc% | |
|--|-------------|--------|--------|--------|--------|------|
| T2002-05-19-17-14-41 - PPMAG4 | | | | | | |
| IRIG:-2,Count: 00:00:00.0 to 02:28:29.64, Dur: 8909s | hhN (dB) | -68.44 | -65.13 | -66.75 | -76.73 | 10.0 |
| TimeLngth: 8909.64s, TimeInt: 40ms (25.0pps) | vvN (dB) | -68.98 | -65.83 | -67.34 | -77.24 | 10.2 |
| TimeCor=0.0s, DSPDif[ms]: mn=40,mx-min=0 | hhL (dB) | -37.79 | -15.24 | -23.10 | -24.79 | 67.8 |
| PPS(min,max,std): 25,25,0.00 | vvL (dB) | -38.88 | -13.90 | -24.85 | -23.44 | 138. |
| Prof: 192 to 222934, NumProf(t/r): 222742/12551 | ppN (m/s) | -12.50 | 12.31 | -0.03 | 4.13 | |
| ProcTime/Recs: 01:57:08-02:05:30/175714-188264 | ppT (m/s) | -98.73 | 97.22 | -0.27 | 32.59 | |
| MxACQtime: 33ms; DRate: 139.9KB/s; Flags: 0, 0, 1 | hh/vv (dB) | -NaN | 68.10 | 21.76 | 43.95 | 1654 |
| Pulse: 275ns, IFfilt: 5.0MHz; ppPol: HH HV VV | vh/hh (dB) | -50.93 | -19.50 | -27.54 | -26.77 | 119. |
| TxPol: HHVV, PRF: 20 10 20 10 kHz | hv/vv (dB) | -NaN | -14.69 | -31.94 | -29.98 | 156. |
| Range: Delay 75m, Spacing 15m, Gates 100 | hn/jmp (dB) | -2.29 | 2.75 | -0.09 | -8.56 | 14.2 |
| Ave. Pulses: 84, Rng/Prof Aspect@90m/s: 4.2 | vn/jmp (dB) | -2.54 | 2.38 | -0.10 | -8.49 | 14.5 |