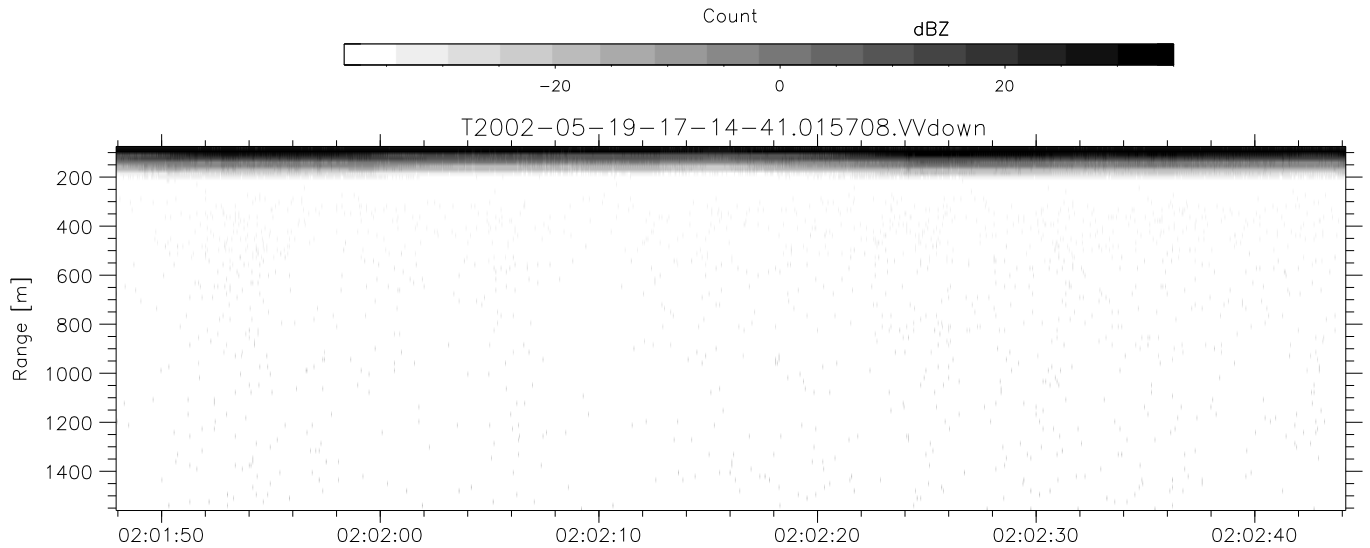
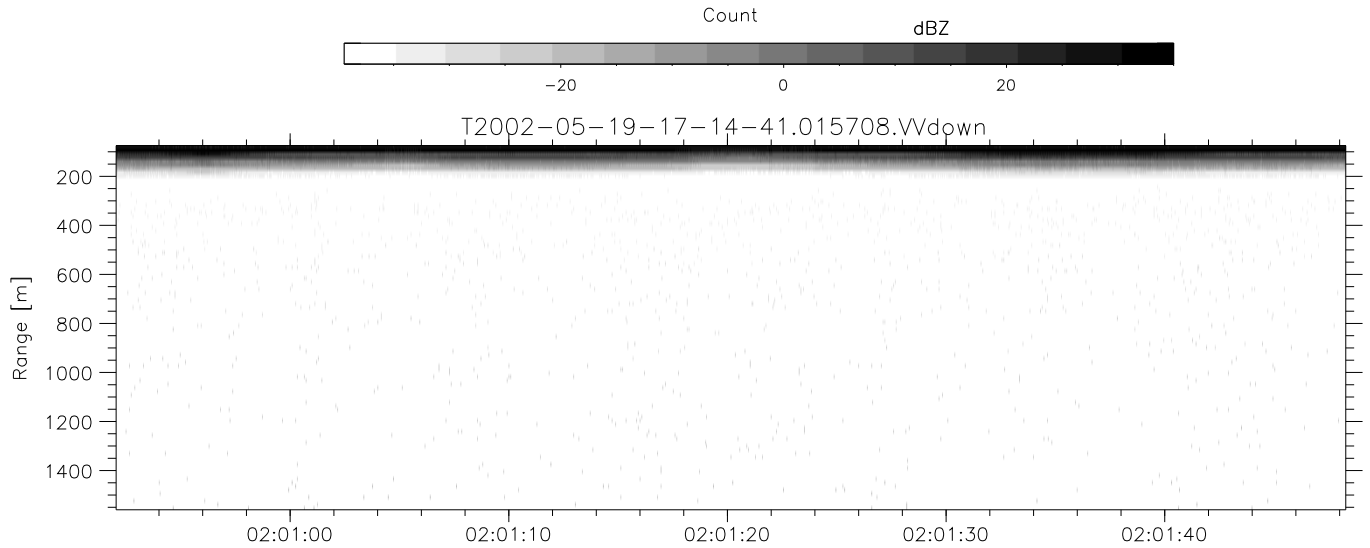
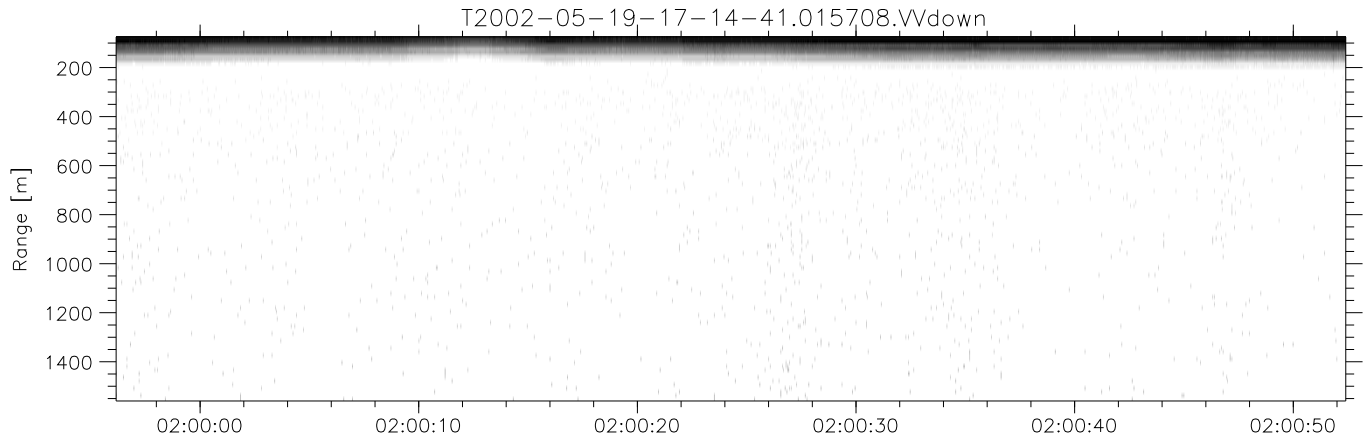


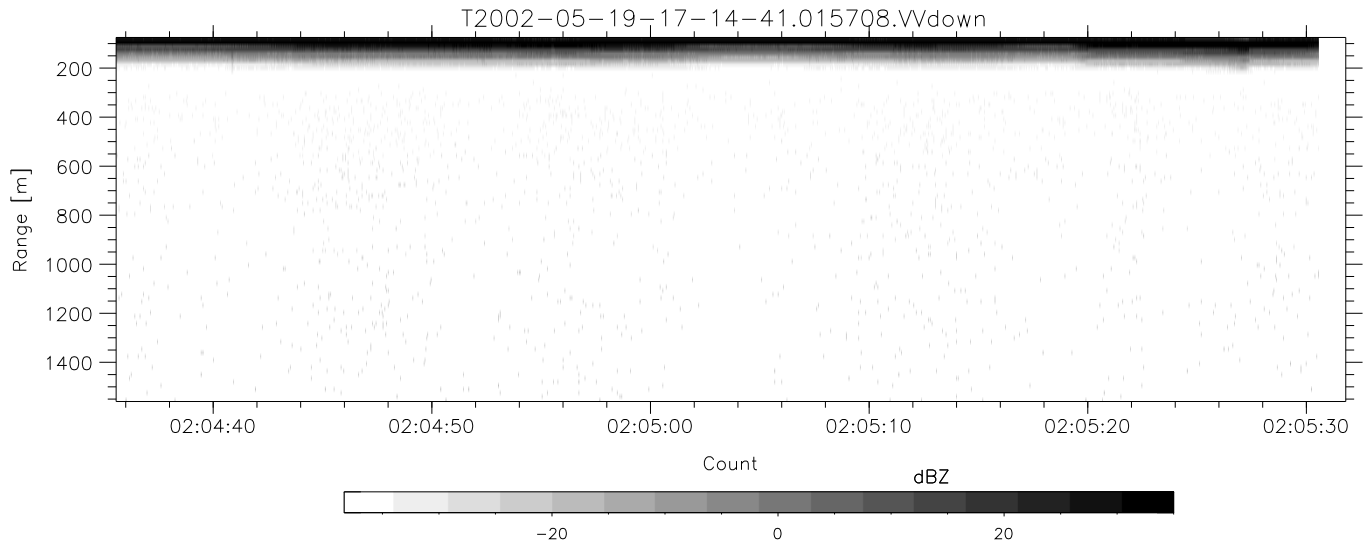
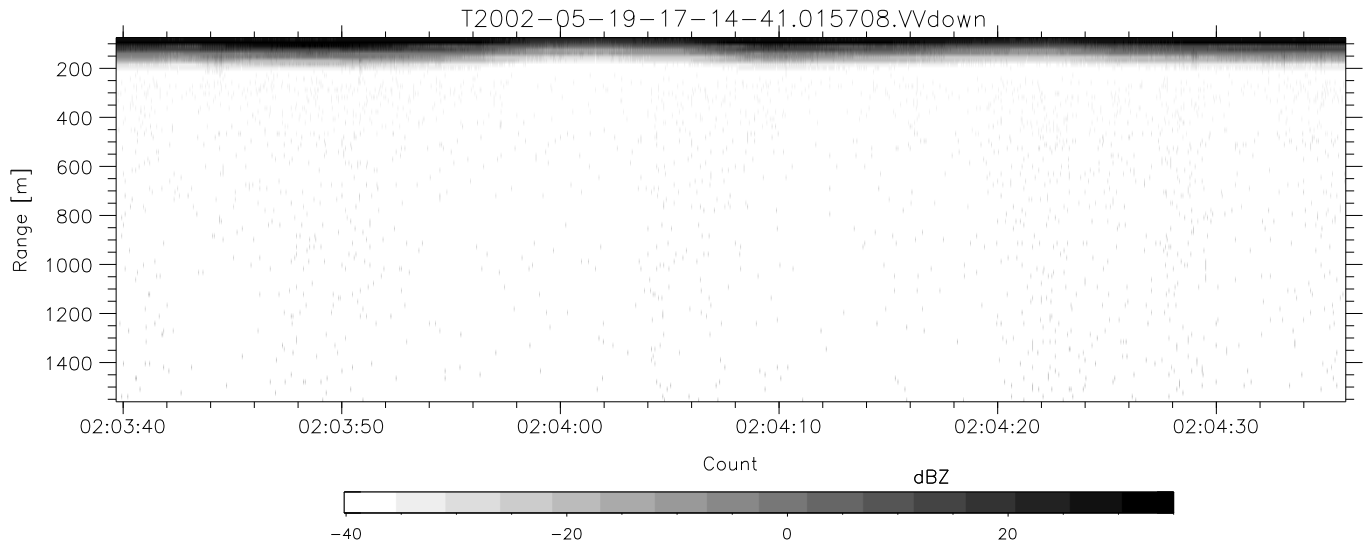
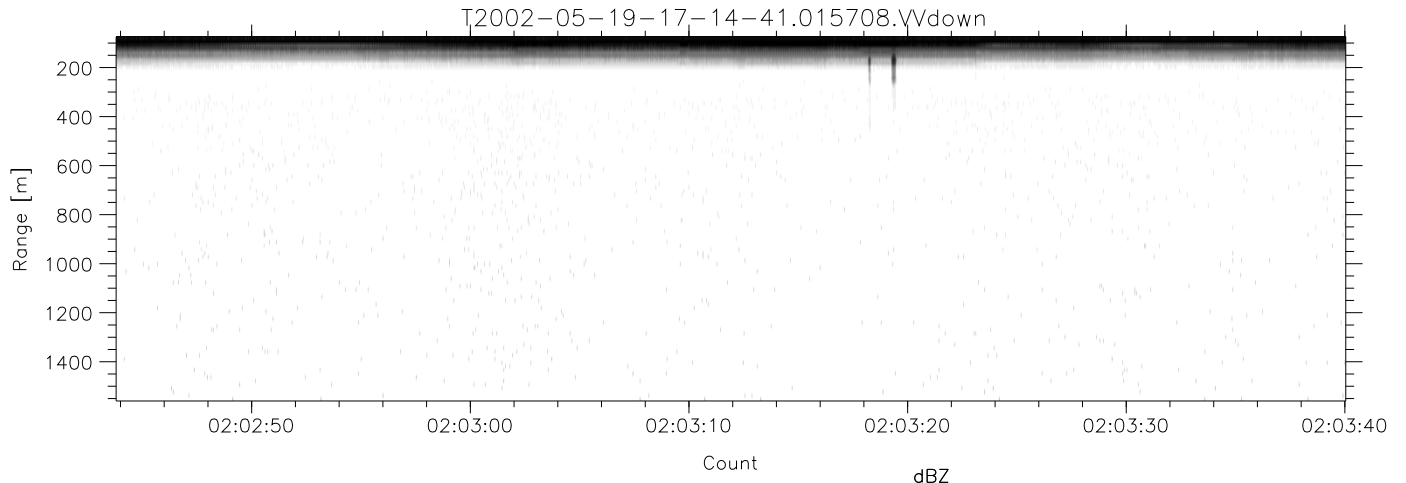
IHOP 2002 (dual-antenna config, modes 1,3,4,7) Data (cal: 49.0,50.0)

T2002-05-19-17-14-41 - PPMAG4	Min	Max	Mean	Std	Varc%	
IRIG:-2,Count: 00:00:00.0 to 02:28:29.64, Dur: 8909s	hhN(dB)	-68.44	-65.13	-66.75	-76.73	10.0
TimeLngth: 8909.64s, TimeInt: 40ms (25.0pps)	vvN(dB)	-68.98	-65.83	-67.34	-77.24	10.2
TimeCor=0.0s, DSPDif[ms]: mn=40,mx-min=0	hhL(dB)	-37.79	-15.24	-23.10	-24.79	67.8
PPS(min,max,std): 25,25,0.00	vvL(dB)	-38.88	-13.90	-24.85	-23.44	138.
Prof: 192 to 222934, NumProf(t/r): 222742/12551	ppN(m/s)	-12.50	12.31	-0.03	4.13	
ProcTime/Recs: 01:57:08-02:05:30/175714-188264	ppT(m/s)	-98.73	97.22	-0.27	32.59	
MxACQtime: 33ms; DRate: 139.9KB/s; Flags: 0, 0, 1	hh/vv(dB)	-NaN	68.10	21.76	43.95	1654
Pulse: 275ns, IFfilt: 5.0MHz; ppPol: HH HV VV	vh/hh(dB)	-50.93	-19.50	-27.54	-26.77	119.
TxPol: HHVV, PRF: 20 10 20 10 kHz	hv/vv(dB)	-NaN	-14.69	-31.94	-29.98	156.
Range: Delay 75m, Spacing 15m, Gates 100	hn/jmp(dB)	-2.29	2.75	-0.09	-8.56	14.2
Ave. Pulses: 84, Rng/Prof Aspect@90m/s: 4.2	vn/jmp(dB)	-2.54	2.38	-0.10	-8.49	14.5



IHOP 2002 (dual-antenna config, modes 1,3,4,7) Data (cal: 49.0,50.0)

T2002-05-19-17-14-41 - PPMAG4	Min	Max	Mean	Std	Varc%	
IRIG:-2,Count: 00:00:00.0 to 02:28:29.64, Dur: 8909s	hhN(dB)	-68.44	-65.13	-66.75	-76.73	10.0
TimeLngth: 8909.64s, TimeInt: 40ms (25.0pps)	vvN(dB)	-68.98	-65.83	-67.34	-77.24	10.2
TimeCor=0.0s, DSPDif[ms]: mn=40,mx-min=0	hhL(dB)	-37.79	-15.24	-23.10	-24.79	67.8
PPS(min,max,std): 25,25,0.00	vvL(dB)	-38.88	-13.90	-24.85	-23.44	138.
Prof: 192 to 222934, NumProf(t/r): 222742/12551	ppN(m/s)	-12.50	12.31	-0.03	4.13	
ProcTime/Recs: 01:57:08-02:05:30/175714-188264	ppT(m/s)	-98.73	97.22	-0.27	32.59	
MxACQtime: 33ms; DRate: 139.9KB/s; Flags: 0, 0, 1	hh/vv(dB)	-NaN	68.10	21.76	43.95	1654
Pulse: 275ns, IFilt: 5.0MHz; ppPol: HH HV VV	vh/hh(dB)	-50.93	-19.50	-27.54	-26.77	119.
TxPol: HHVV, PRF: 20 10 20 10 kHz	hv/vv(dB)	-NaN	-14.69	-31.94	-29.98	156.
Range: Delay 75m, Spacing 15m, Gates 100	hnjmp(dB)	-2.29	2.75	-0.09	-8.56	14.2
Ave. Pulses: 84, Rng/Prof Aspect@90m/s: 4.2	vnjmp(dB)	-2.54	2.38	-0.10	-8.49	14.5



IHOP 2002 (dual-antenna config, modes 1,3,4,7) Data (cal: 49.0,50.0)

T2002-05-19-17-14-41 - PPMAG4	Min	Max	Mean	Std	Varc%	
IRIG:-2,Count: 00:00:00.0 to 02:28:29.64, Dur: 8909s	hhN(dB)	-68.44	-65.13	-66.75	-76.73	10.0
TimeLngth: 8909.64s, TimeInt: 40ms (25.0pps)	vvN(dB)	-68.98	-65.83	-67.34	-77.24	10.2
TimeCor=0.0s, DSPDif[ms]: mn=40,mx-min=0	hhL(dB)	-37.79	-15.24	-23.10	-24.79	67.8
PPS(min,max,std): 25,25,0.00	vvL(dB)	-38.88	-13.90	-24.85	-23.44	138.
Prof: 192 to 222934, NumProf(t/r): 222742/12551	ppN(m/s)	-12.50	12.31	-0.03	4.13	
ProcTime/Recs: 01:57:08-02:05:30/175714-188264	ppT(m/s)	-98.73	97.22	-0.27	32.59	
MxACQtime: 33ms; DRate: 139.9KB/s; Flags: 0, 0, 1	hh/vv(dB)	-NaN	68.10	21.76	43.95	1654
Pulse: 275ns, IFilt: 5.0MHz; ppPol: HH HV VV	vh/hh(dB)	-50.93	-19.50	-27.54	-26.77	119.
TxPol: HHVV, PRF: 20 10 20 10 kHz	hv/vv(dB)	-NaN	-14.69	-31.94	-29.98	156.
Range: Delay 75m, Spacing 15m, Gates 100	hnjmp(dB)	-2.29	2.75	-0.09	-8.56	14.2
Ave. Pulses: 84, Rng/Prof Aspect@90m/s: 4.2	vnjmp(dB)	-2.54	2.38	-0.10	-8.49	14.5