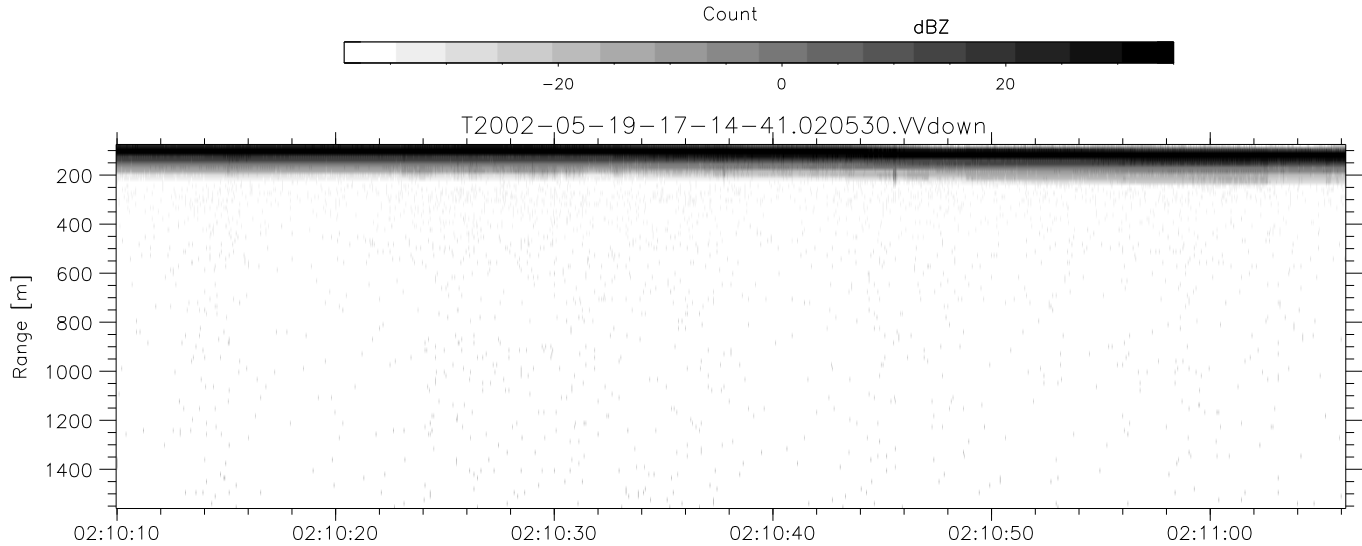
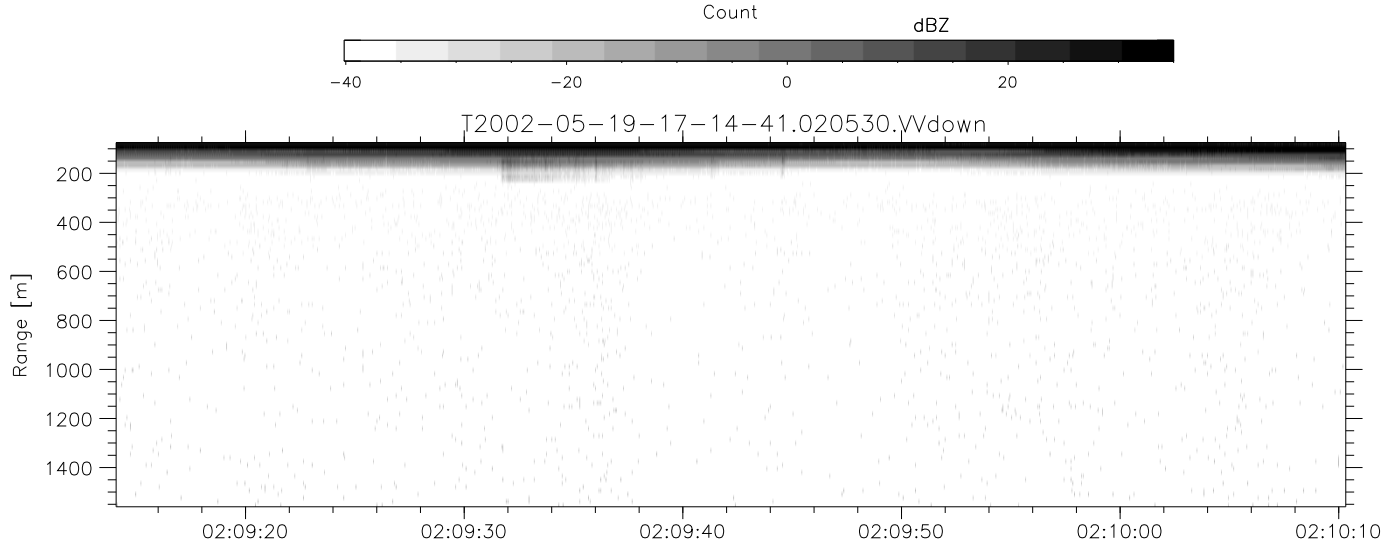
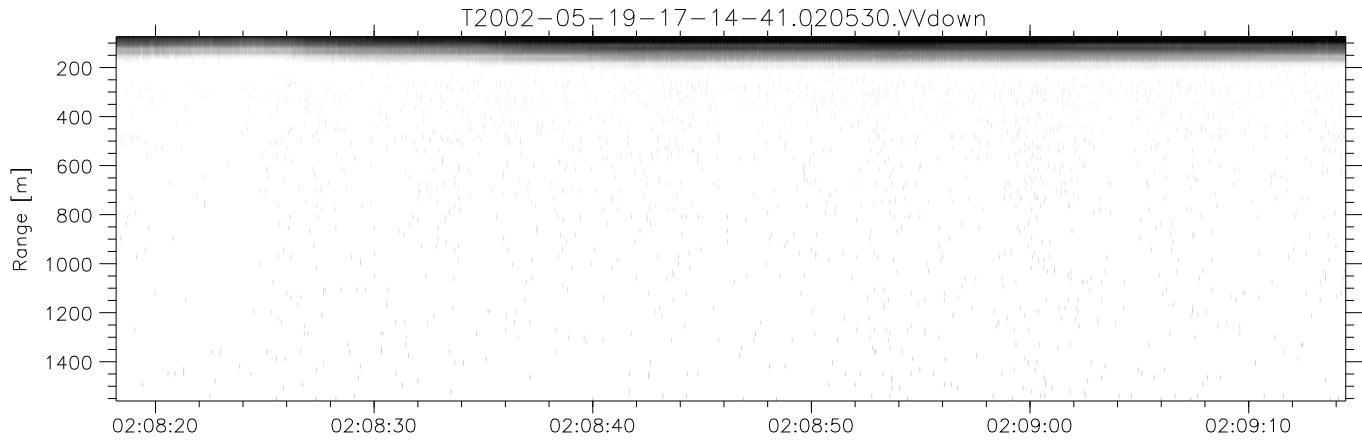


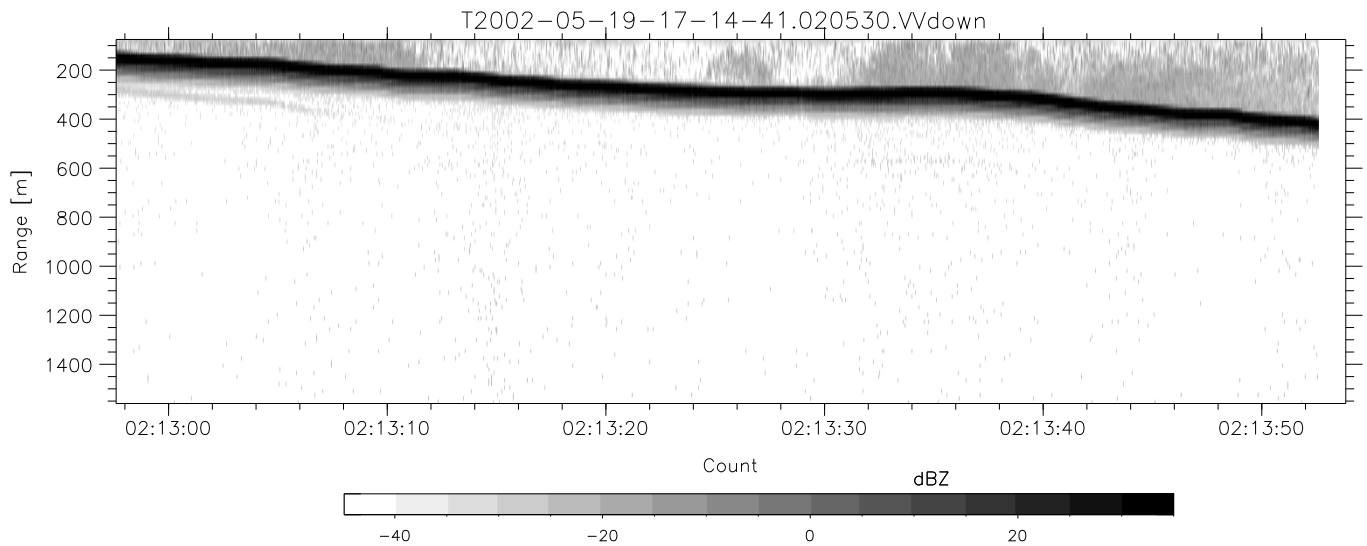
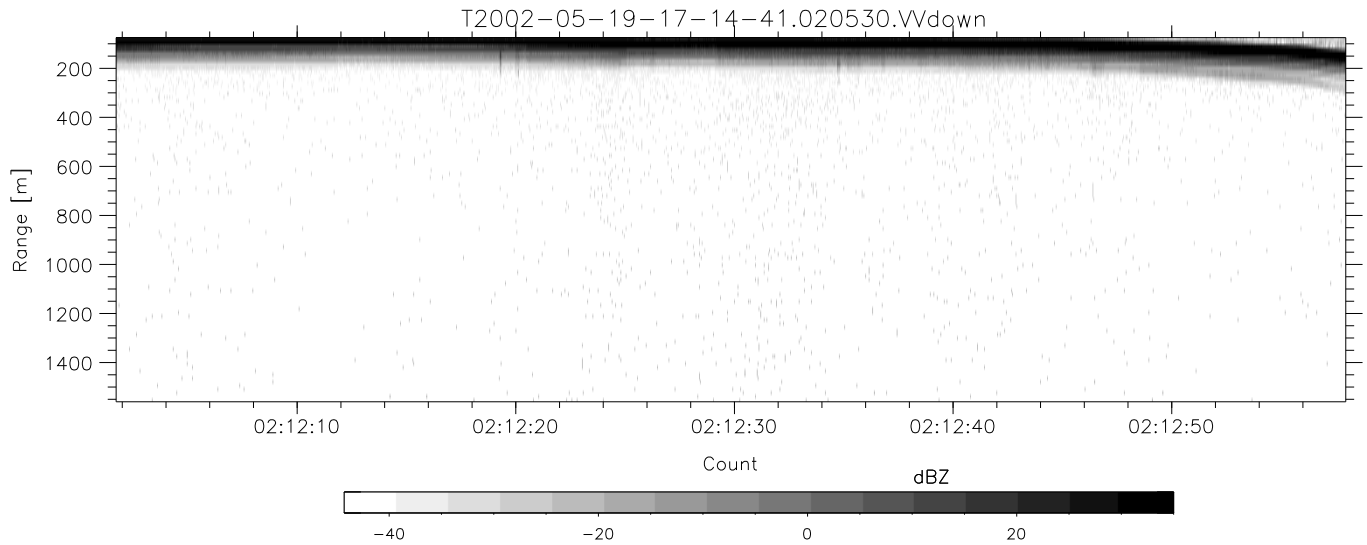
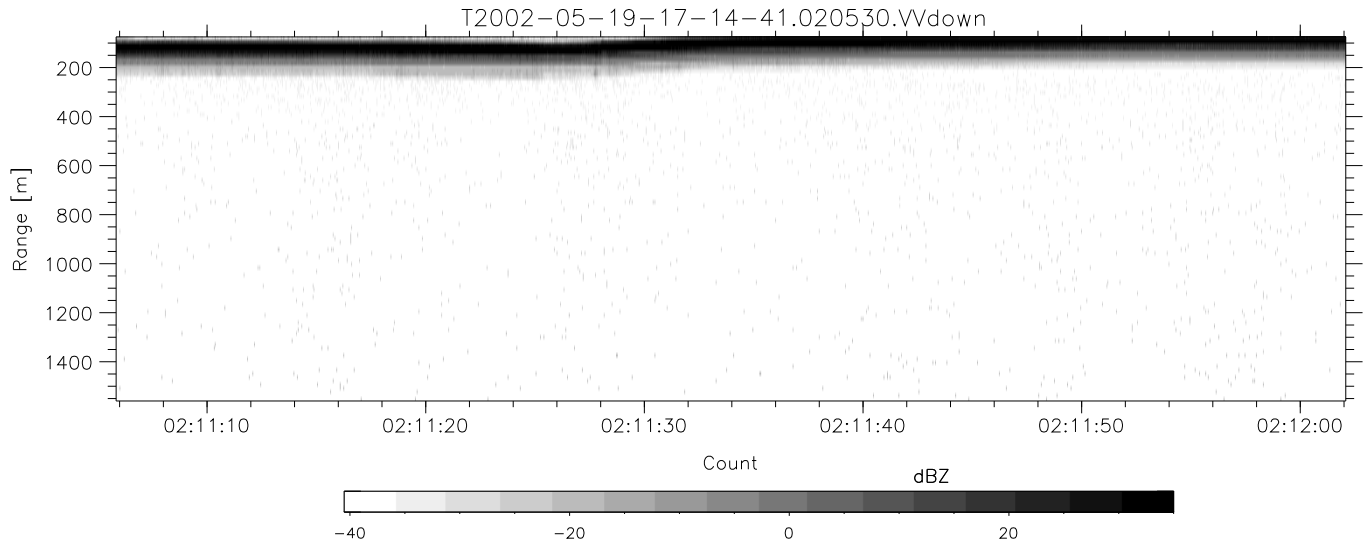
IHOP 2002 (dual-antenna config, modes 1,3,4,7) Data (cal: 49.0,50.0)

T2002-05-19-17-14-41 - PPMAG4	Min	Max	Mean	Std	Varc%	
IRIG:-2,Count: 00:00:00.0 to 02:28:29.64, Dur: 8909s	hhN(dB)	-68.72	-65.34	-66.82	-76.85	9.9
TimeLngth: 8909.64s, TimeInt: 40ms (25.0pps)	vvN(dB)	-69.13	-65.90	-67.41	-77.34	10.1
TimeCor=0.0s, DSPDif[ms]: mn=40,mx-min=0	hhL(dB)	-37.35	-15.88	-23.79	-25.19	72.5
PPS(min,max,std): 25,25,0.00	vvL(dB)	-36.24	-14.63	-23.89	-23.05	121.
Prof: 192 to 222934, NumProf(t/r): 222742/12551	ppN(m/s)	-12.12	11.97	-0.03	4.16	
ProcTime/Recs: 02:05:30-02:13:52/188265-200815	ppT(m/s)	-95.71	94.59	-0.21	32.90	
MxACQtime: 33ms; DRate: 139.9KB/s; Flags: 0, 0, 1	hh/vv(dB)	-NaN	63.14	22.48	41.51	7997
Pulse: 275ns, IFilt: 5.0MHz; ppPol: HH HV VV	vh/hh(dB)	-NaN	-2.41	-19.94	-13.25	467.
TxPol: HHVV, PRF: 20 10 20 10 kHz	hv/vv(dB)	-NaN	-12.43	-34.38	-29.53	305.
Range: Delay 75m, Spacing 15m, Gates 100	hnjmp(dB)	-2.12	2.21	0.17	-8.38	13.9
Ave. Pulses: 84, Rng/Prof Aspect@90m/s: 4.2	vnjmp(dB)	-2.31	2.43	0.19	-8.25	14.3



IHOP 2002 (dual-antenna config, modes 1,3,4,7) Data (cal: 49.0,50.0)

T2002-05-19-17-14-41 - PPMAG4	Min	Max	Mean	Std	Varc%	
IRIG:-2,Count: 00:00:00.0 to 02:28:29.64, Dur: 8909s	hhN (dB)	-68.72	-65.34	-66.82	-76.85	9.9
TimeLngth: 8909.64s, TimeInt: 40ms (25.0pps)	vvN (dB)	-69.13	-65.90	-67.41	-77.34	10.1
TimeCor=0.0s, DSPDif[ms]: mn=40,mx-min=0	hhL (dB)	-37.35	-15.88	-23.79	-25.19	72.5
PPS(min,max,std): 25,25,0.00	vvL (dB)	-36.24	-14.63	-23.89	-23.05	121.
Prof: 192 to 222934, NumProf(t/r): 222742/12551	ppN (m/s)	-12.12	11.97	-0.03	4.16	
ProcTime/Recs: 02:05:30-02:13:52/188265-200815	ppT (m/s)	-95.71	94.59	-0.21	32.90	
MxACQtime: 33ms; DRate: 139.9KB/s; Flags: 0, 0, 1	hh/vv (dB)	-NaN	63.14	22.48	41.51	7997
Pulse: 275ns, IFfilt: 5.0MHz; ppPol: HH HV VV	vh/hh (dB)	-NaN	-2.41	-19.94	-13.25	467.
TxPol: HHVV, PRF: 20 10 20 10 kHz	hv/vv (dB)	-NaN	-12.43	-34.38	-29.53	305.
Range: Delay 75m, Spacing 15m, Gates 100	hn/jmp (dB)	-2.12	2.21	0.17	-8.38	13.9
Ave. Pulses: 84, Rng/Prof Aspect@90m/s: 4.2	vn/jmp (dB)	-2.31	2.43	0.19	-8.25	14.3



IHOP 2002 (dual-antenna config, modes 1,3,4,7) Data (cal: 49.0,50.0)

T2002-05-19-17-14-41 - PPMAG4						
IRIG:-2,Count: 00:00:00.0 to 02:28:29.64, Dur: 8909s	hhN(dB)	Min	Max	Mean	Std	Varc%
TimeLngth: 8909.64s, TimeInt: 40ms (25.0pps)	vvN(dB)	-68.72	-65.34	-66.82	-76.85	9.9
TimeCor=0.0s, DSPDif[ms]: mn=40,mx-min=0	hhL(dB)	-69.13	-65.90	-67.41	-77.34	10.1
PPS(min,max,std): 25,25,0.00	vvL(dB)	-37.35	-15.88	-23.79	-25.19	72.5
Prof: 192 to 222934, NumProf(t/r): 222742/12551	ppN(m/s)	-36.24	-14.63	-23.89	-23.05	121.
ProcTime/Recs: 02:05:30-02:13:52/188265-200815	ppT(m/s)	-12.12	11.97	-0.03	4.16	
MxACQtime: 33ms; DRate: 139.9KB/s; Flags: 0, 0, 1	hh/vv(dB)	-95.71	94.59	-0.21	32.90	
Pulse: 275ns, IFilt: 5.0MHz; ppPol: HH HV VV	vh/vh(dB)	-NaN	63.14	22.48	41.51	7997
TxPol: HHVV, PRF: 20 10 20 10 kHz	hv/hv(dB)	-NaN	-2.41	-19.94	-13.25	467.
Range: Delay 75m, Spacing 15m, Gates 100	hv/vv(dB)	-NaN	-12.43	-34.38	-29.53	305.
Ave. Pulses: 84, Rng/Prof Aspect@90m/s: 4.2	hnjmp(dB)	-2.12	2.21	0.17	-8.38	13.9
	vnjmp(dB)	-2.31	2.43	0.19	-8.25	14.3