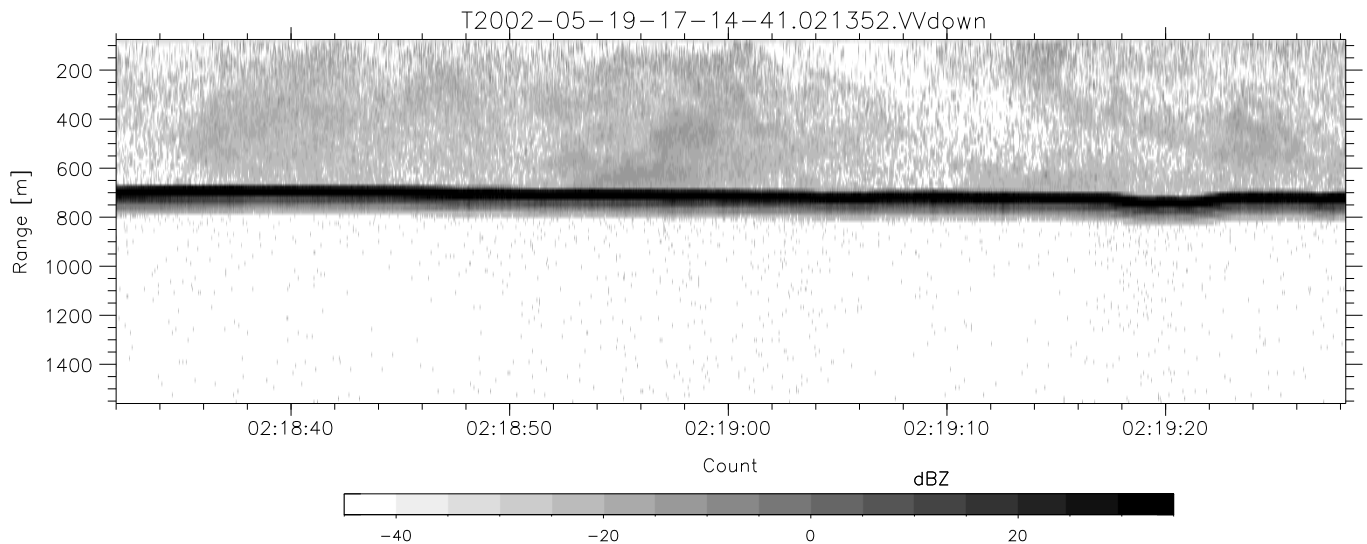
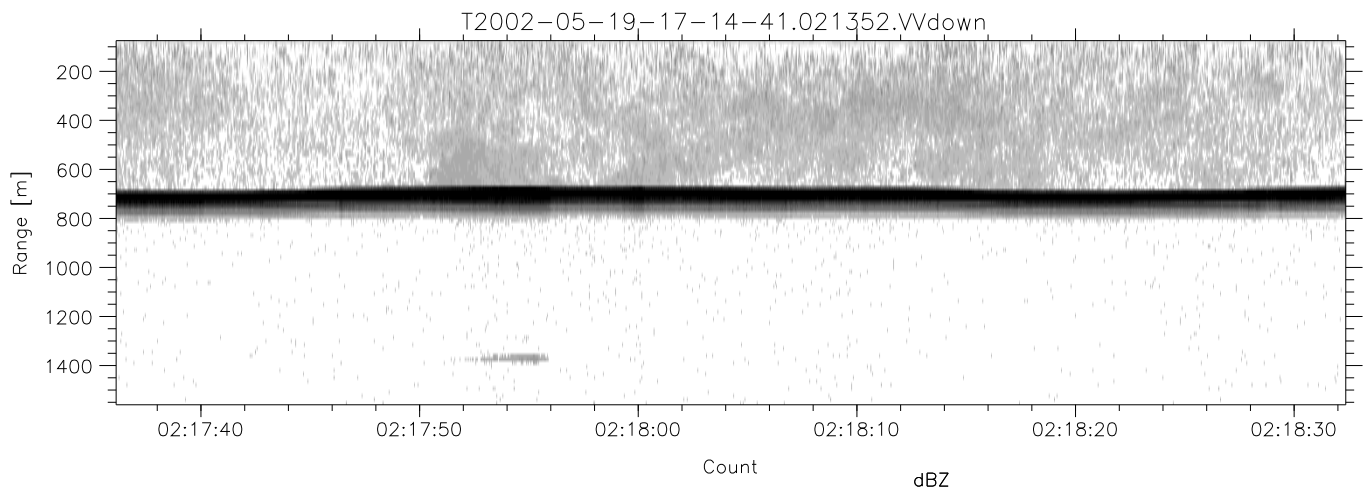
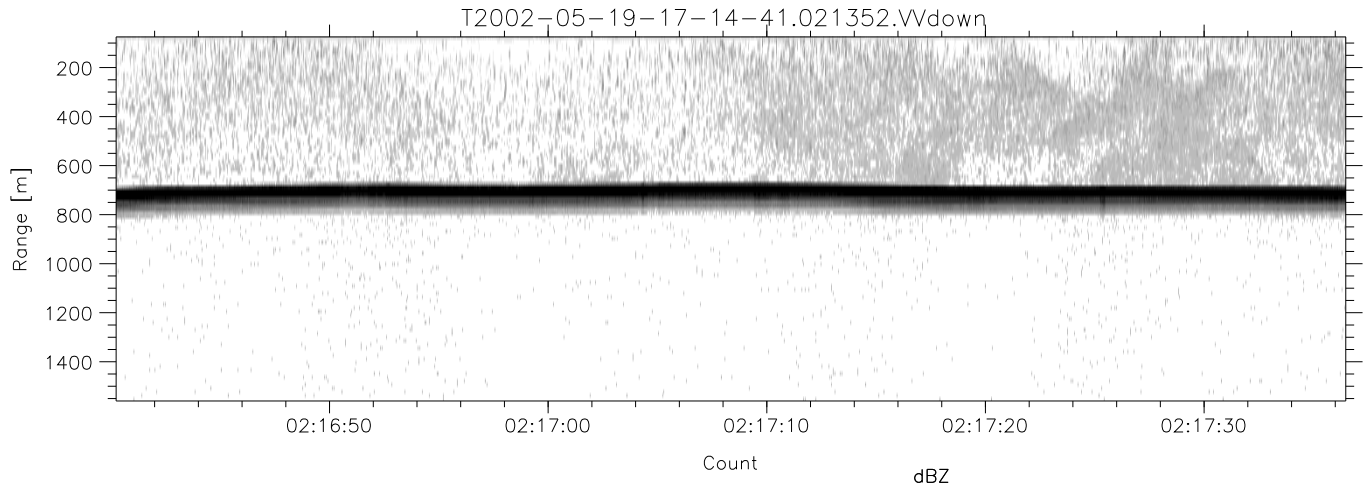


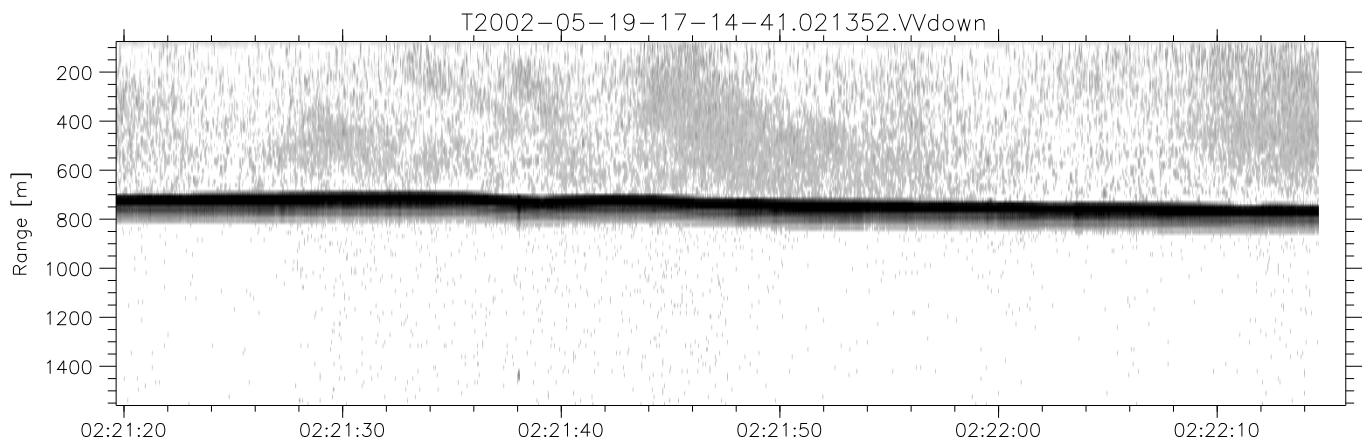
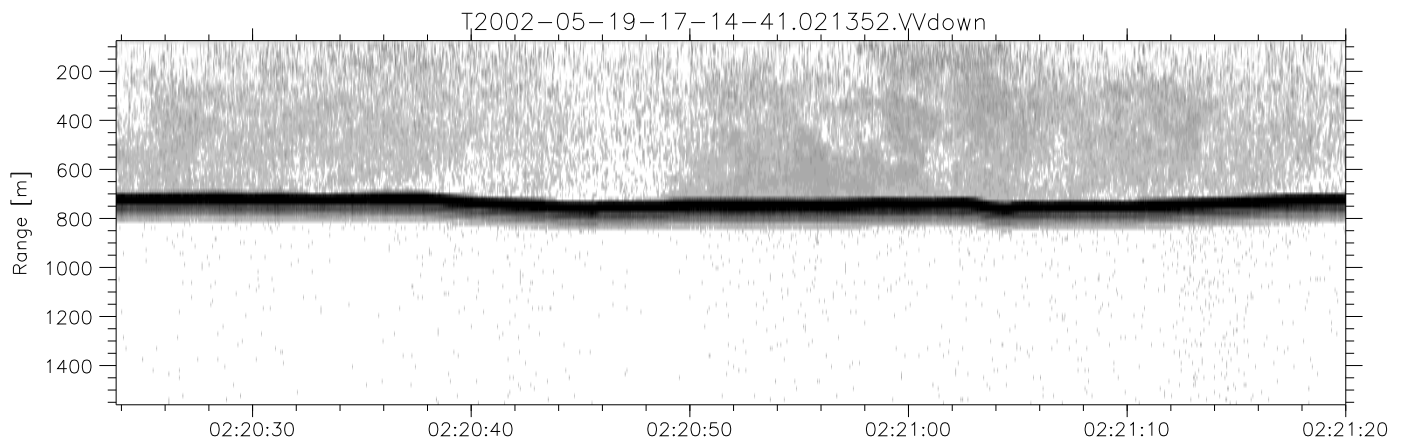
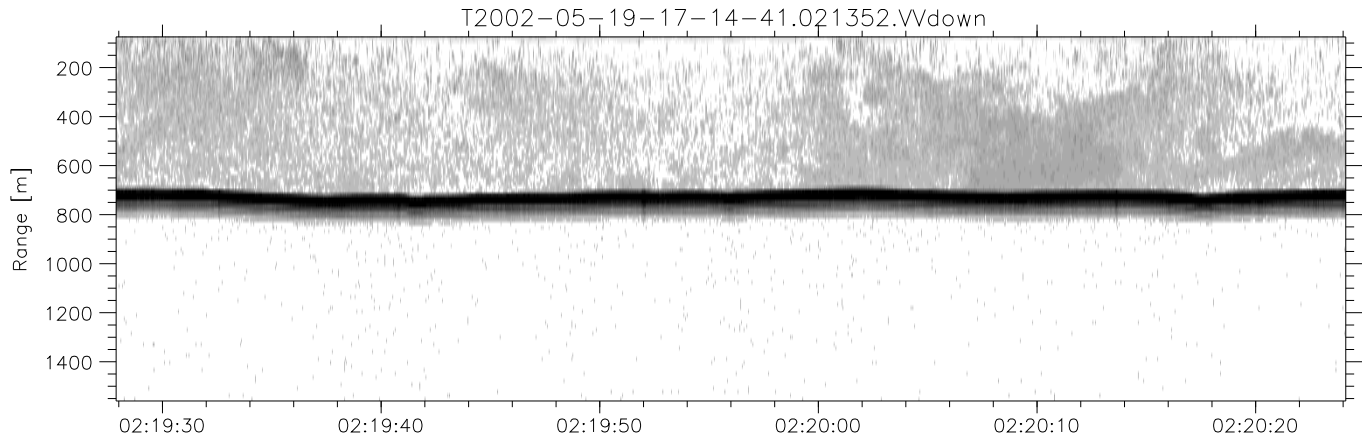
IHOP 2002 (dual-antenna config, modes 1,3,4,7) Data (cal: 49.0,50.0)

T2002-05-19-17-14-41 - PPMAG4	Min	Max	Mean	Std	Varc%
IRIG:-2,Count: 00:00:00.0 to 02:28:29.64, Dur: 8909s	-68.94	-65.25	-66.92	-76.88	10.1
TimeLngth: 8909.64s, TimeInt: 40ms (25.0pps)	-69.17	-65.91	-67.44	-77.37	10.2
TimeCor=0.0s, DSPDif[ms]: mn=40,mx-min=0	-30.38	-16.18	-22.37	-27.78	28.8
PPS(min,max,std): 25,25,0.00	-30.15	-15.73	-24.49	-26.90	57.4
Prof: 192 to 222934, NumProf(t/r): 222742/12551	ppN(m/s)	-12.54	12.44	0.00	4.16
ProcTime/Recs: 02:13:52-02:22:14/200816-213366	ppT(m/s)	-99.08	98.26	0.01	32.88
MxACQtime: 33ms; DRate: 139.9KB/s; Flags: 0, 0, 1	hh/vv(dB)	-NaN	55.41	19.16	35.42 4225
Pulse: 275ns, IFilt: 5.0MHz; ppPol: HH HV VV	vh/hh(dB)	-NaN	-29.98	-37.05	-36.48 114.
TxPol: HHVV, PRF: 20 10 20 10 kHz	hv/vv(dB)	-NaN	-35.41	-54.36	-46.67 587.
Range: Delay 75m, Spacing 15m, Gates 100	hn/jmp(dB)	-2.25	2.08	-0.10	-8.65 14.0
Ave. Pulses: 84, Rng/Prof Aspect@90m/s: 4.2	vn/jmp(dB)	-2.84	2.14	-0.12	-8.57 14.3



IHOP 2002 (dual-antenna config, modes 1,3,4,7) Data (cal: 49.0,50.0)

T2002-05-19-17-14-41 - PPMAG4	Min	Max	Mean	Std	Varc%	
IRIG:-2,Count: 00:00:00.0 to 02:28:29.64, Dur: 8909s	hhN (dB)	-68.94	-65.25	-66.92	-76.88	10.1
TimeLngth: 8909.64s, TimeInt: 40ms (25.0pps)	vvN (dB)	-69.17	-65.91	-67.44	-77.37	10.2
TimeCor=0.0s, DSPDif[ms]: mn=40,mx-min=0	hhL (dB)	-30.38	-16.18	-22.37	-27.78	28.8
PPS(min,max,std): 25,25,0.00	vvL (dB)	-30.15	-15.73	-24.49	-26.90	57.4
Prof: 192 to 222934, NumProf(t/r): 222742/12551	ppN (m/s)	-12.54	12.44	0.00	4.16	
ProcTime/Recs: 02:13:52-02:22:14/200816-213366	ppT (m/s)	-99.08	98.26	0.01	32.88	
MxACQtime: 33ms; DRate: 139.9KB/s; Flags: 0, 0, 1	hh/vv (dB)	-NaN	55.41	19.16	35.42	4225
Pulse: 275ns, IFfilt: 5.0MHz; ppPol: HH HV VV	vh/hh (dB)	-NaN	-29.98	-37.05	-36.48	114.
TxPol: HHVV, PRF: 20 10 20 10 kHz	hv/vv (dB)	-NaN	-35.41	-54.36	-46.67	587.
Range: Delay 75m, Spacing 15m, Gates 100	hn/jmp (dB)	-2.25	2.08	-0.10	-8.65	14.0
Ave. Pulses: 84, Rng/Prof Aspect@90m/s: 4.2	vn/jmp (dB)	-2.84	2.14	-0.12	-8.57	14.3



IHOP 2002 (dual-antenna config, modes 1,3,4,7) Data (cal: 49.0,50.0)

T2002-05-19-17-14-41 - PPMAG4	Min	Max	Mean	Std	Varc%	
IRIG:-2,Count: 00:00:00.0 to 02:28:29.64, Dur: 8909s	hhN (dB)	-68.94	-65.25	-66.92	-76.88	10.1
TimeLngth: 8909.64s, TimeInt: 40ms (25.0pps)	vvN (dB)	-69.17	-65.91	-67.44	-77.37	10.2
TimeCor=0.0s, DSPDif[ms]: mn=40,mx-min=0	hhL (dB)	-30.38	-16.18	-22.37	-27.78	28.8
PPS(min,max,std): 25,25,0.00	vvL (dB)	-30.15	-15.73	-24.49	-26.90	57.4
Prof: 192 to 222934, NumProf(t/r): 222742/12551	ppN (m/s)	-12.54	12.44	0.00	4.16	
ProcTime/Recs: 02:13:52-02:22:14/200816-213366	ppT (m/s)	-99.08	98.26	0.01	32.88	
MxACQtime: 33ms; DRate: 139.9KB/s; Flags: 0, 0, 1	hh/vv (dB)	-NaN	55.41	19.16	35.42	4225
Pulse: 275ns, IFfilt: 5.0MHz; ppPol: HH HV VV	vh/hh (dB)	-NaN	-29.98	-37.05	-36.48	114.
TxPol: HHVV, PRF: 20 10 20 10 kHz	hv/vv (dB)	-NaN	-35.41	-54.36	-46.67	587.
Range: Delay 75m, Spacing 15m, Gates 100	hn/jmp (dB)	-2.25	2.08	-0.10	-8.65	14.0
Ave. Pulses: 84, Rng/Prof Aspect@90m/s: 4.2	vn/jmp (dB)	-2.84	2.14	-0.12	-8.57	14.3