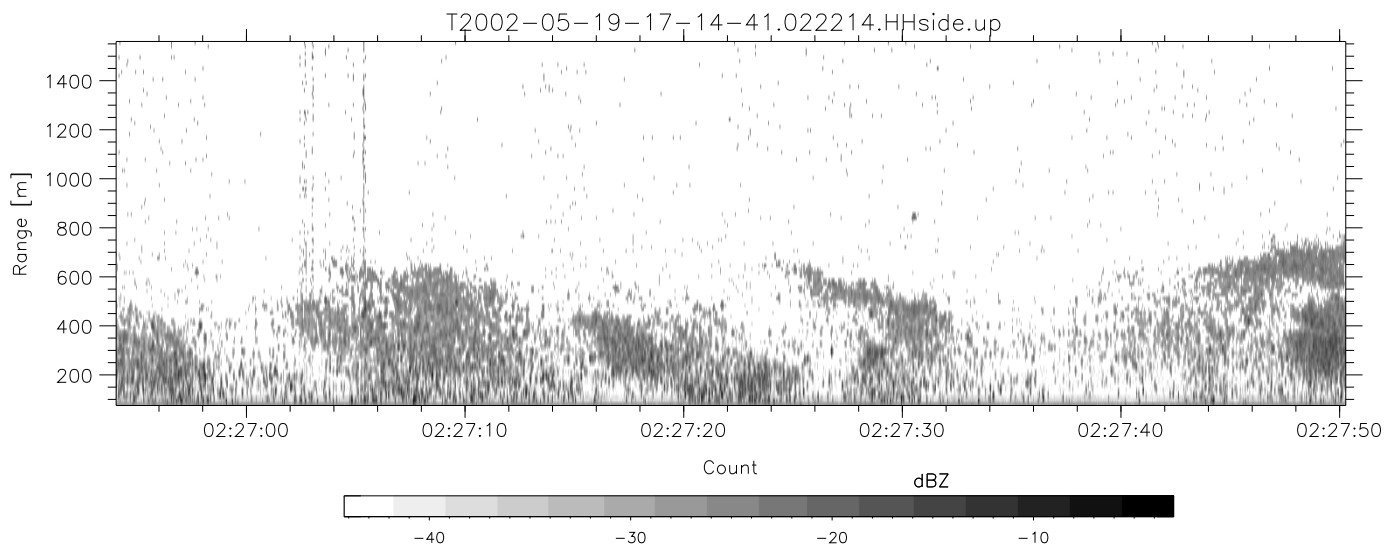
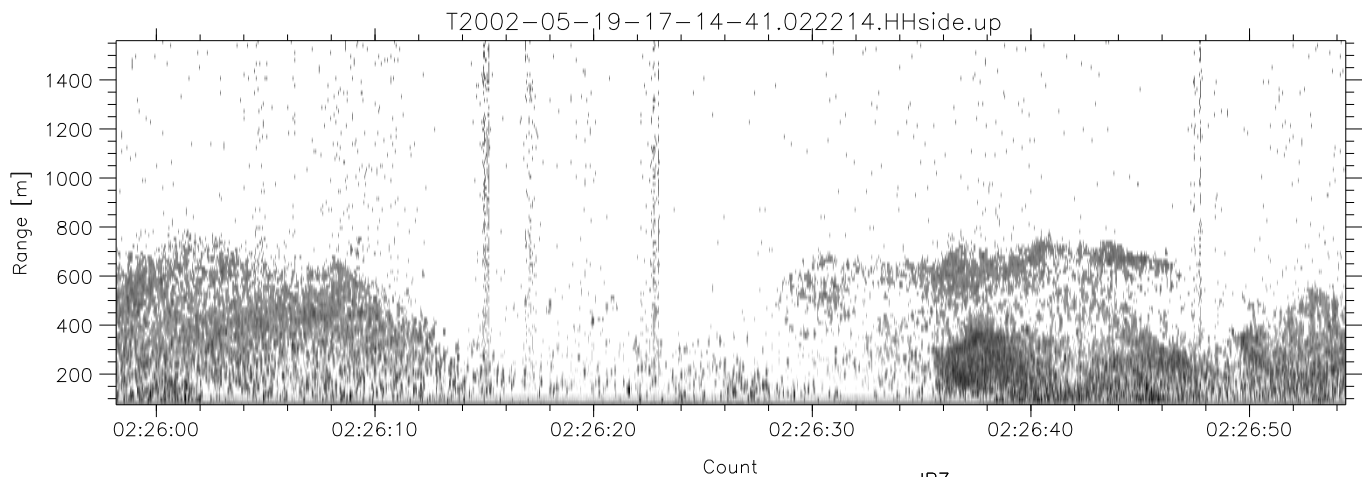
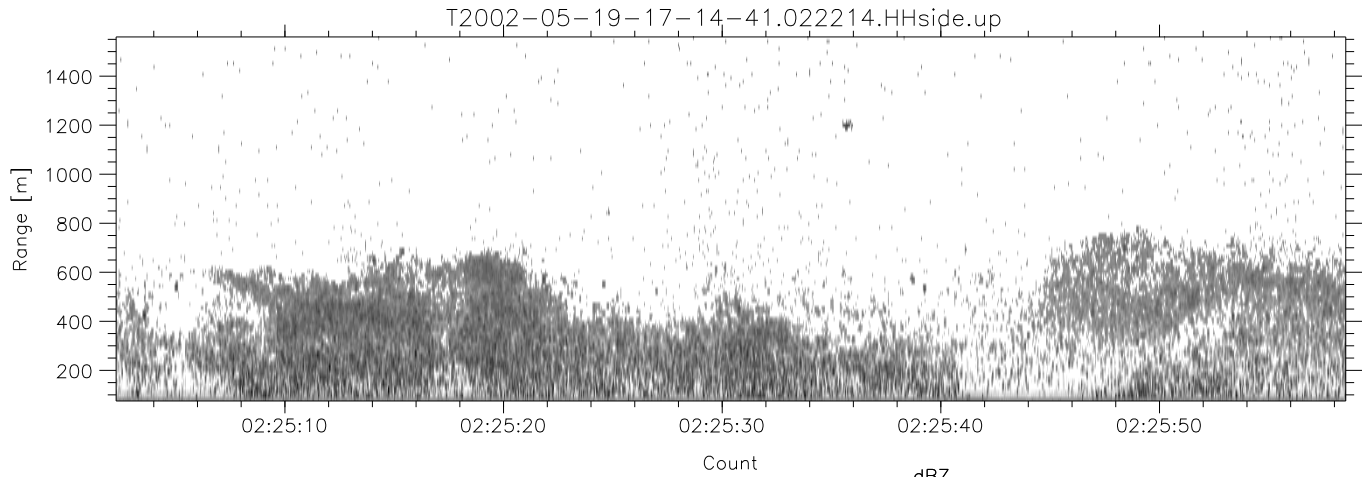


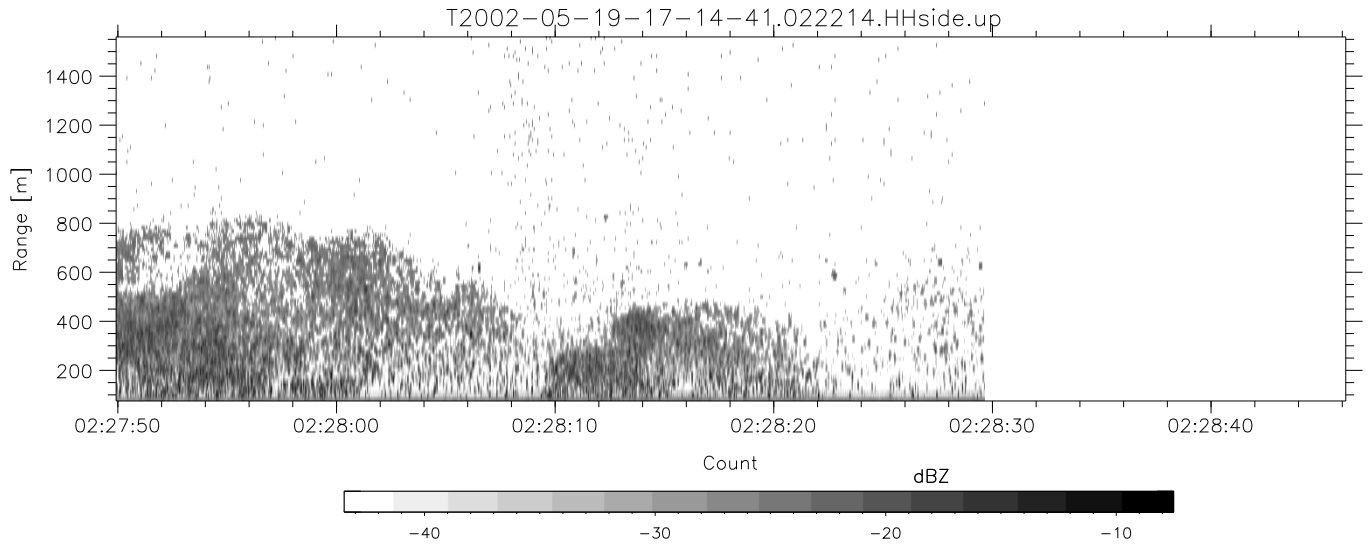
IHOP 2002 (dual-antenna config, modes 1,3,4,7) Data (cal: 49.0,50.0)

T2002-05-19-17-14-41 - PPMAG4						
IRIG:-2,Count: 00:00:00.0 to 02:28:29.64, Dur: 8909s	hhN (dB)	Min	Max	Mean	Std	Varc%
TimeLngth: 8909.64s, TimeInt: 40ms (25.0pps)	vvN (dB)	-68.65	-65.04	-66.93	-76.82	10.3
TimeCor=0.0s, DSPDif[ms]: mn=40,mx-min=0	hhL (dB)	-69.11	-65.65	-67.46	-77.20	10.6
PPS(min,max,std): 25,25,0.00	vvL (dB)	-27.26	-17.59	-21.50	-27.90	22.9
Prof: 192 to 222934, NumProf(t/r): 222742/9375	ppN (m/s)	-30.46	-16.27	-25.79	-28.01	60.0
ProcTime/Recs: 02:22:14-02:28:29/213367-222741	ppT (m/s)	-12.13	12.24	0.07	4.18	
MxAcQtime: 33ms; DRate: 139.9KB/s; Flags: 0, 0, 1	hh/vv (dB)	-95.83	96.73	0.53	33.05	
Pulse: 275ns, IFilt: 5.0MHz; ppPol: HH HV VV	vh/vh (dB)	-NaN	51.07	-NaN	38.71	-516
TxPol: HHVV, PRF: 20 10 20 10 kHz	hv/hv (dB)	-NaN	-32.38	-36.49	-37.07	87.6
Range: Delay 75m, Spacing 15m, Gates 100	hn/vv (dB)	-NaN	-35.36	-55.62	-46.18	879.9
Ave. Pulses: 84, Rng/Prof Aspect@90m/s: 4.2	hn/jmp (dB)	-2.27	2.52	0.19	-8.37	13.9
	vn/jmp (dB)	-2.01	2.14	0.18	-8.35	14.0



IHOP 2002 (dual-antenna config, modes 1,3,4,7) Data (cal: 49.0,50.0)

T2002-05-19-17-14-41 - PPMAG4	Min	Max	Mean	Std	Varc%	
IRIG:-2,Count: 00:00:00.0 to 02:28:29.64, Dur: 8909s	hhN(dB)	-68.65	-65.04	-66.93	-76.82	10.3
TimeLngth: 8909.64s, TimeInt: 40ms (25.0pps)	vvN(dB)	-69.11	-65.65	-67.46	-77.20	10.6
TimeCor=0.0s, DSPDif[ms]: mn=40,mx-min=0	hhL(dB)	-27.26	-17.59	-21.50	-27.90	22.9
PPS(min,max,std): 25,25,0.00	vvL(dB)	-30.46	-16.27	-25.79	-28.01	60.0
Prof: 192 to 222934, NumProf(t/r): 222742/9375	ppN(m/s)	-12.13	12.24	0.07	4.18	
ProcTime/Recs: 02:22:14-02:28:29/213367-222741	ppT(m/s)	-95.83	96.73	0.53	33.05	
MxACQtime: 33ms; DRate: 139.9KB/s; Flags: 0, 0, 1	hh/vv(dB)	-NaN	51.07	-NaN	38.71	-516
Pulse: 275ns, IFfilt: 5.0MHz; ppPol: HH HV VV	vh/hh(dB)	-NaN	-32.38	-36.49	-37.07	87.6
TxPol: HHVV, PRF: 20 10 20 10 kHz	hv/vv(dB)	-NaN	-35.36	-55.62	-46.18	879.9
Range: Delay 75m, Spacing 15m, Gates 100	hn/jmp(dB)	-2.27	2.52	0.19	-8.37	13.9
Ave. Pulses: 84, Rng/Prof Aspect@90m/s: 4.2	vn/jmp(dB)	-2.01	2.14	0.18	-8.35	14.0



IHOP 2002 (dual-antenna config, modes 1,3,4,7) Data (cal: 49.0,50.0)

T2002-05-19-17-14-41 - PPMAG4						
IRIG:-2,Count: 00:00:00.0 to 02:28:29.64, Dur: 8909s	hhN(dB)	Min	Max	Mean	Std	Varc%
TimeLngth: 8909.64s, TimeInt: 40ms (25.0pps)	vvN(dB)	-68.65	-65.04	-66.93	-76.82	10.3
TimeCor=0.0s, DSPDif[ms]: mn=40,mx-min=0	hhL(dB)	-69.11	-65.65	-67.46	-77.20	10.6
PPS(min,max,std): 25,25,0.00	vvL(dB)	-27.26	-17.59	-21.50	-27.90	22.9
Prof: 192 to 222934, NumProf(t/r): 222742/9375	ppN(m/s)	-30.46	-16.27	-25.79	-28.01	60.0
ProcTime/Recs: 02:22:14-02:28:29/213367-222741	ppT(m/s)	-12.13	12.24	0.07	4.18	
MxACQtime: 33ms; DRate: 139.9KB/s; Flags: 0, 0, 1	hh/vv(dB)	-95.83	96.73	0.53	33.05	
Pulse: 275ns, IFilt: 5.0MHz; ppPol: HH HV VV	vh/hh(dB)	-NaN	51.07	-NaN	38.71	-516
TxPol: HHVV, PRF: 20 10 20 10 kHz	hv/vv(dB)	-NaN	-32.38	-36.49	-37.07	87.6
Range: Delay 75m, Spacing 15m, Gates 100	hn/vv(dB)	-NaN	-35.36	-55.62	-46.18	879.
Ave. Pulses: 84, Rng/Prof Aspect@90m/s: 4.2	hn/jmp(dB)	-2.27	2.52	0.19	-8.37	13.9
	vn/jmp(dB)	-2.01	2.14	0.18	-8.35	14.0