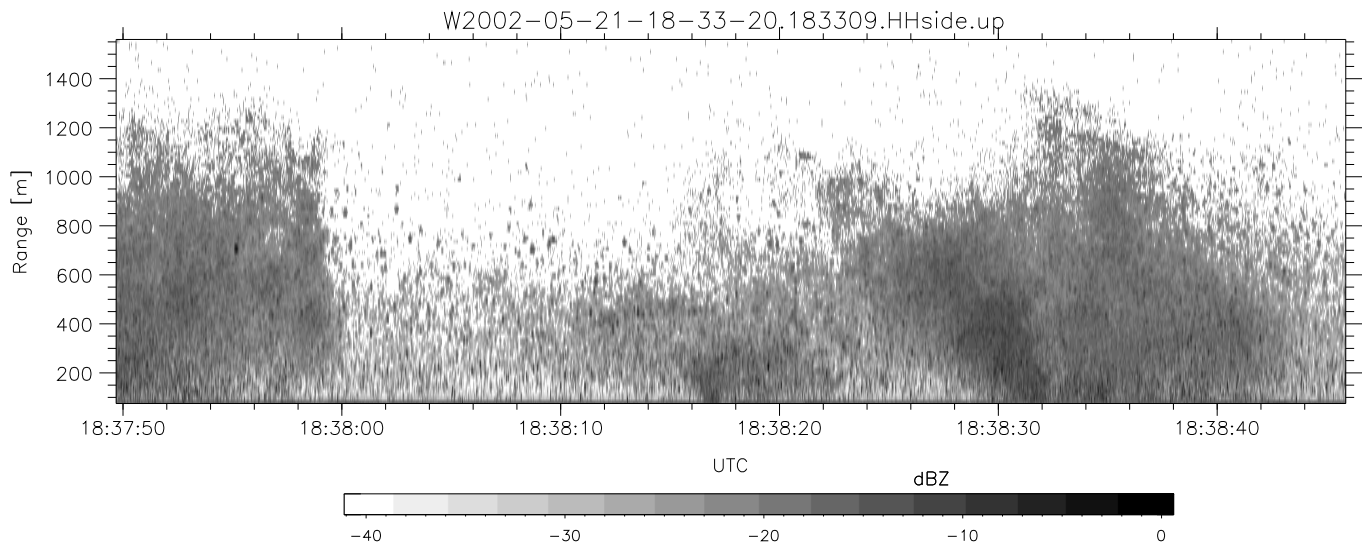
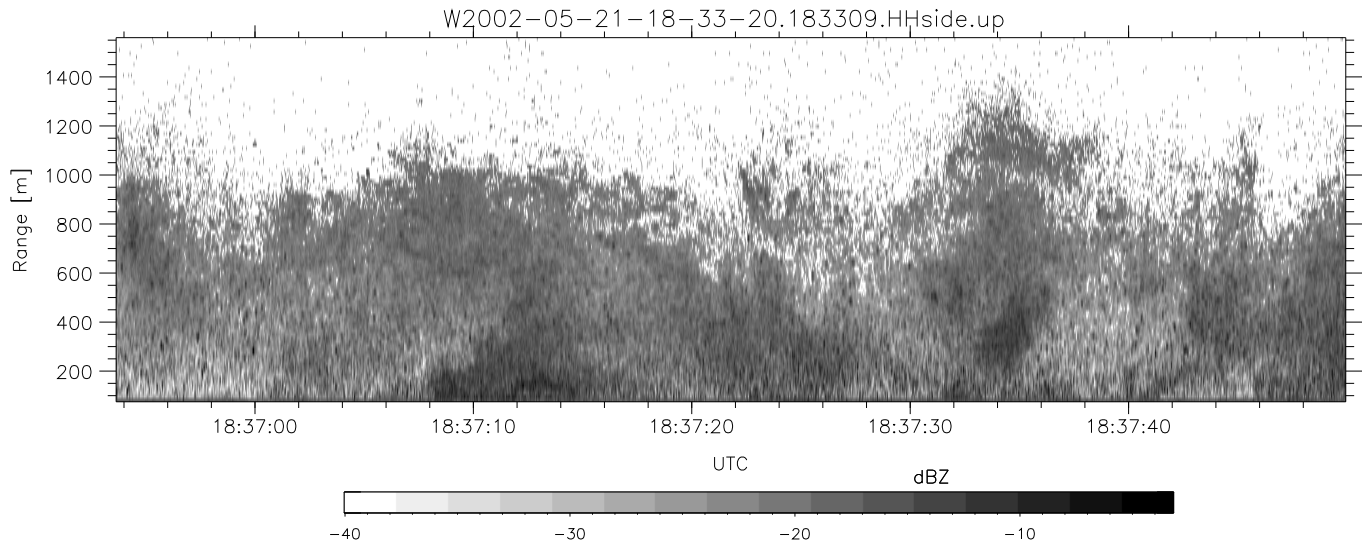
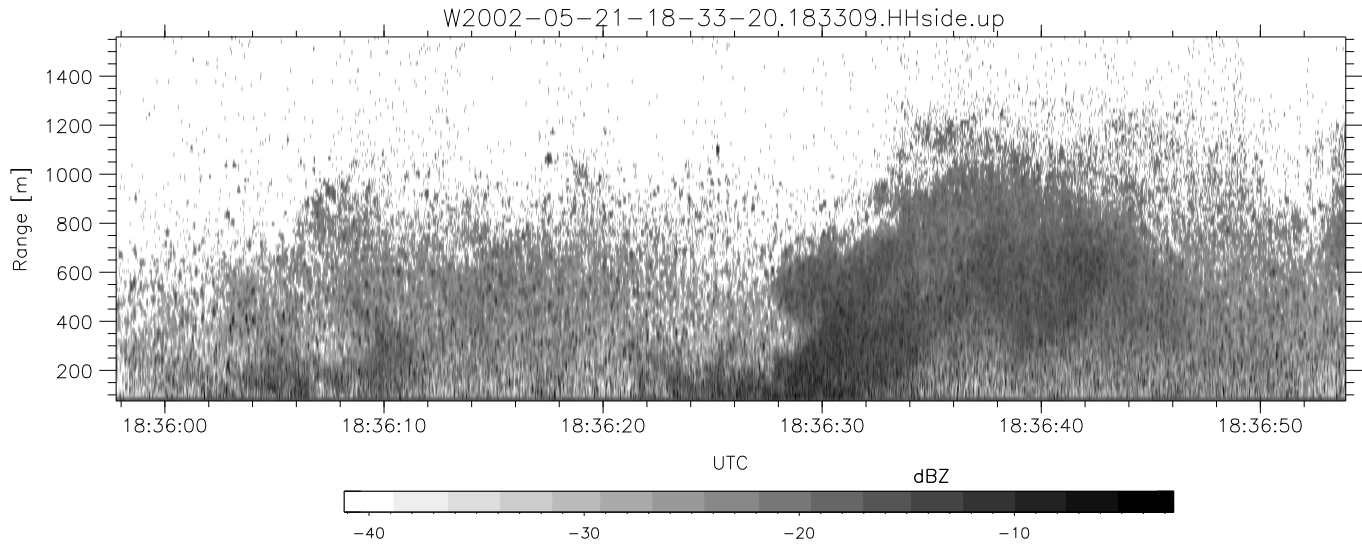


IHOP 2002 (dual-antenna config, modes 1,3,4,7) Data (cal: 49.0,50.0)

W2002-05-21-18-33-20 - PPMAG4  
 IRIG:1,UTC: 18:33:09.48 to 19:02:15.66, Dur: 1746s  
 TimeLngth: 1746.17s, TimeInt: 29ms (33.4pps)  
 TimeCor=-13.0s, DSPDif[ms]: mn=29,mx-min=271  
 PPS(min,max,std): 20,36,2.09  
 Prof: 20972 to 79263, NumProf(t/r): 58291/16567  
 ProcTime/Recs: 18:33:09-18:41:25/0-16566  
 MxACQtime: 33ms; DRate: 186.9KB/s; Flags: 0, 0, 0  
 Pulse: 275ns, IFilt: 5.0MHz; ppPol: HH HV VV  
 TxPol: HHVV, PRF: 20 10 20 10 kHz  
 Range: Delay 75m, Spacing 15m, Gates 100  
 Ave. Pulses: 84, Rng/Prof Aspect@90m/s: 5.6

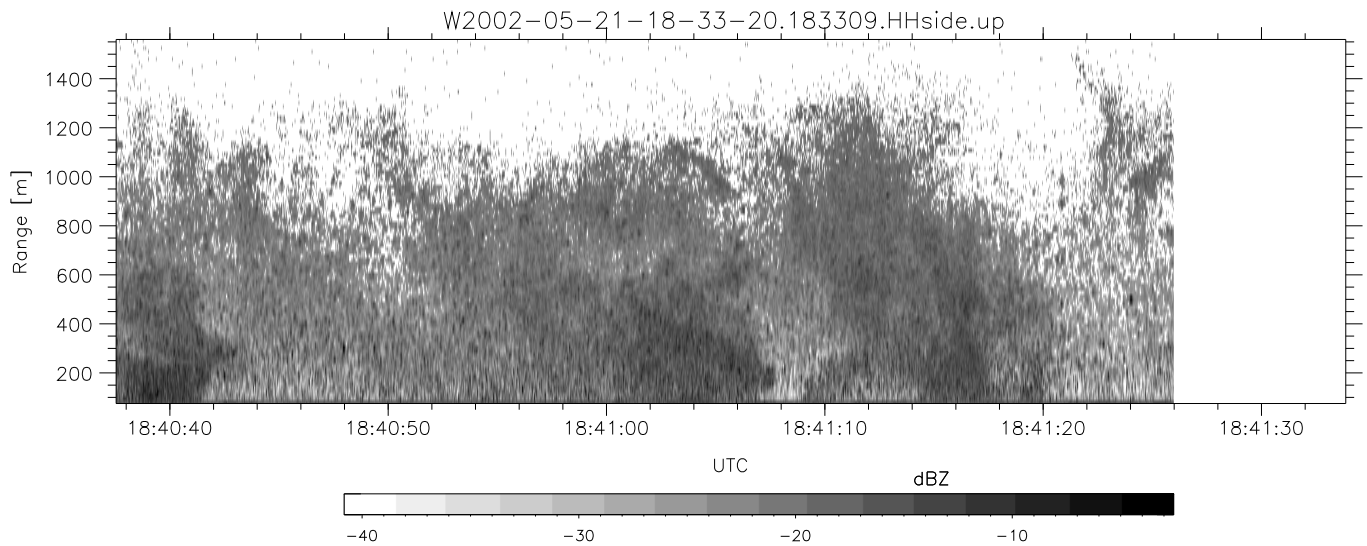
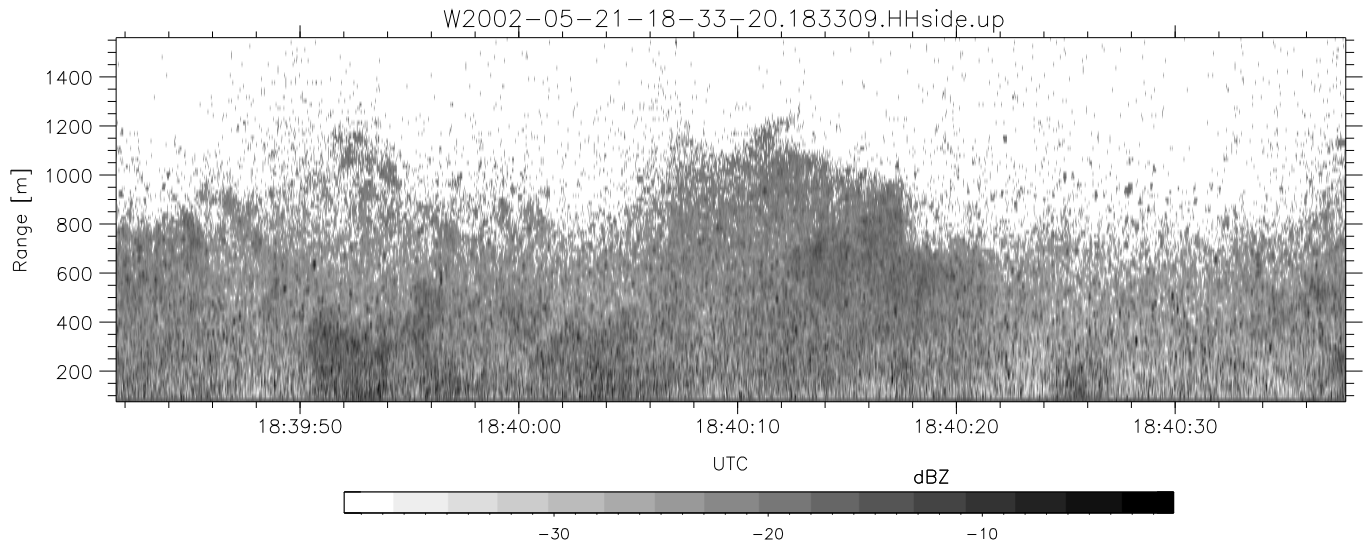
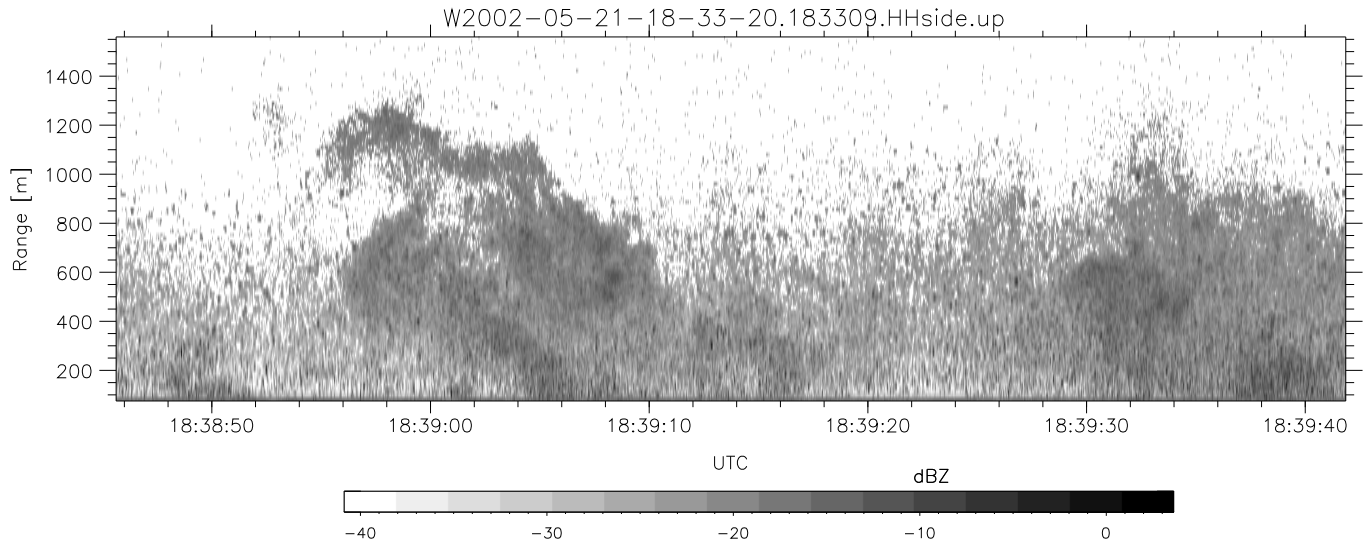
	Min	Max	Mean	Std	Varc%
hhN(dB)	-66.45	-63.07	-64.61	-74.78	9.6
vvN(dB)	-66.93	-63.08	-65.08	-74.27	12.1
hhL(dB)	-29.79	-4.45	-8.61	-13.36	33.5
vvL(dB)	-32.18	-9.34	-13.77	-18.43	34.2
ppN(m/s)	-12.63	12.29	-0.03	4.12	
ppT(m/s)	-99.75	97.12	-0.27	32.57	
hh/vv(dB)	-NaN	74.18	21.58	48.26	4653
vh/hh(dB)	-NaN	5.28	-12.13	-6.64	354.
hv/vv(dB)	-NaN	-1.25	-35.49	-23.42	1613
hnjmp(dB)	-2.21	2.15	-0.05	-8.75	13.5
vnjmp(dB)	-2.33	2.08	-0.05	-8.74	13.5



IHOP 2002 (dual-antenna config, modes 1,3,4,7) Data (cal: 49.0,50.0)

W2002-05-21-18-33-20 - PPMAG4  
 IRIG:1,UTC: 18:33:09.48 to 19:02:15.66, Dur: 1746s  
 TimeLngth: 1746.17s, TimeInt: 29ms (33.4pps)  
 TimeCor=-13.0s, DSPDif[ms]: mn=29,mx-min=271  
 PPS(min,max,std): 20,36,2.09  
 Prof: 20972 to 79263, NumProf(t/r): 58291/16567  
 ProcTime/Recs: 18:33:09-18:41:25/0-16566  
 MxACQtime: 33ms; DRate: 186.9KB/s; Flags: 0, 0, 0  
 Pulse: 275ns, IFfilt: 5.0MHz; ppPol: HH HV VV  
 TxPol: HHVV, PRF: 20 10 20 10 kHz  
 Range: Delay 75m, Spacing 15m, Gates 100  
 Ave. Pulses: 84, Rng/Prof Aspect@90m/s: 5.6

	Min	Max	Mean	Std	Varc%
hhN (dB)	-66.45	-63.07	-64.61	-74.78	9.6
vvN (dB)	-66.93	-63.08	-65.08	-74.27	12.1
hhL (dB)	-29.79	-4.45	-8.61	-13.36	33.5
vvL (dB)	-32.18	-9.34	-13.77	-18.43	34.2
ppN (m/s)	-12.63	12.29	-0.03	4.12	
ppT (m/s)	-99.75	97.12	-0.27	32.57	
hh/vv (dB)	-NaN	74.18	21.58	48.26	4653
vh/hh (dB)	-NaN	5.28	-12.13	-6.64	354.
hv/vv (dB)	-NaN	-1.25	-35.49	-23.42	1613
hnjmp (dB)	-2.21	2.15	-0.05	-8.75	13.5
vnjmp (dB)	-2.33	2.08	-0.05	-8.74	13.5



IHOP 2002 (dual-antenna config, modes 1,3,4,7) Data (cal: 49.0,50.0)

W2002-05-21-18-33-20 - PPMAG4  
 IRIG:1,UTC: 18:33:09.48 to 19:02:15.66, Dur: 1746s  
 TimeLngth: 1746.17s, TimeInt: 29ms (33.4pps)  
 TimeCor=-13.0s, DSPDif[ms]: mn=29,mx-min=271  
 PPS(min,max,std): 20,36,2.09  
 Prof: 20972 to 79263, NumProf(t/r): 58291/16567  
 ProcTime/Recs: 18:33:09-18:41:25/0-16566  
 MxACQtime: 33ms; DRate: 186.9KB/s; Flags: 0, 0, 0  
 Pulse: 275ns, IFfilt: 5.0MHz; ppPol: HH HV VV  
 TxPol: HHVV, PRF: 20 10 20 10 kHz  
 Range: Delay 75m, Spacing 15m, Gates 100  
 Ave. Pulses: 84, Rng/Prof Aspect@90m/s: 5.6

	Min	Max	Mean	Std	Varc%
hhN (dB)	-66.45	-63.07	-64.61	-74.78	9.6
vvN (dB)	-66.93	-63.08	-65.08	-74.27	12.1
hhL (dB)	-29.79	-4.45	-8.61	-13.36	33.5
vvL (dB)	-32.18	-9.34	-13.77	-18.43	34.2
ppN (m/s)	-12.63	12.29	-0.03	4.12	
ppT (m/s)	-99.75	97.12	-0.27	32.57	
hh/vv (dB)	-NaN	74.18	21.58	48.26	4653
vh/hh (dB)	-NaN	5.28	-12.13	-6.64	354.
hv/vv (dB)	-NaN	-1.25	-35.49	-23.42	1613
hnjmp (dB)	-2.21	2.15	-0.05	-8.75	13.5
vnjmp (dB)	-2.33	2.08	-0.05	-8.74	13.5