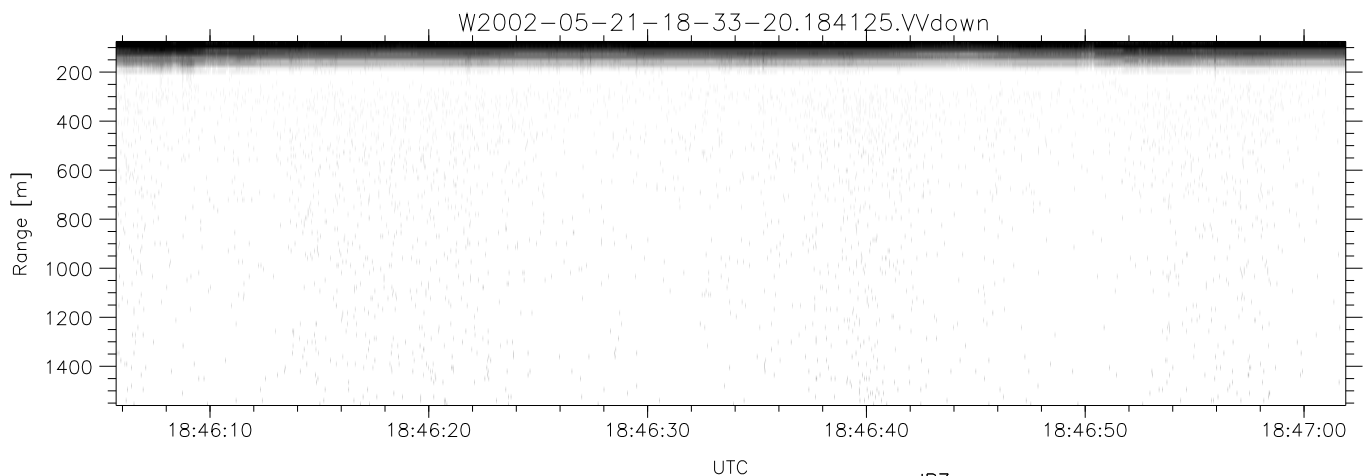
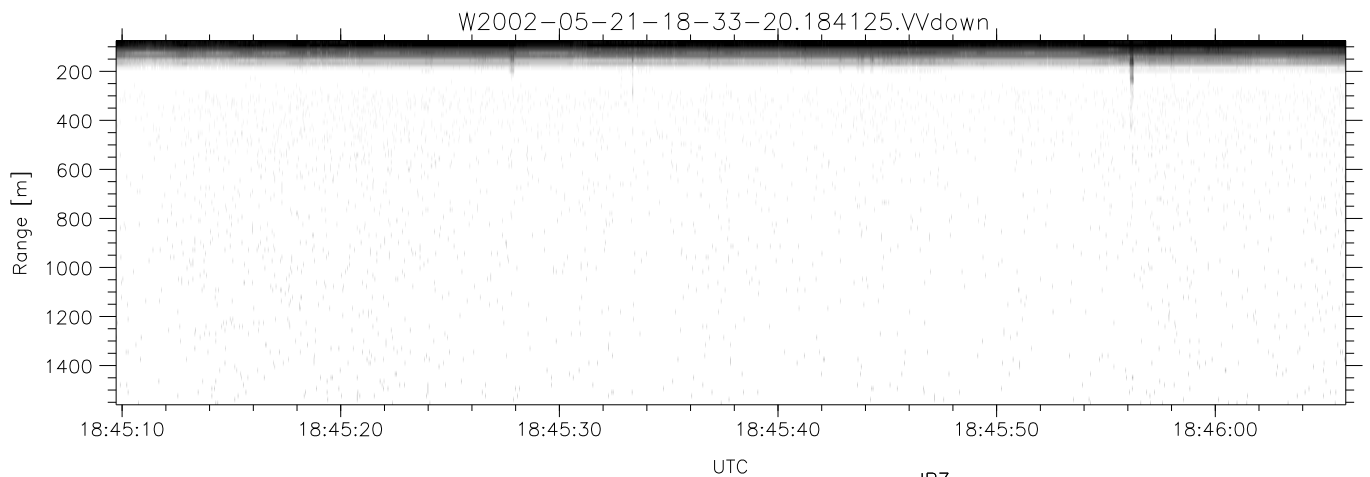
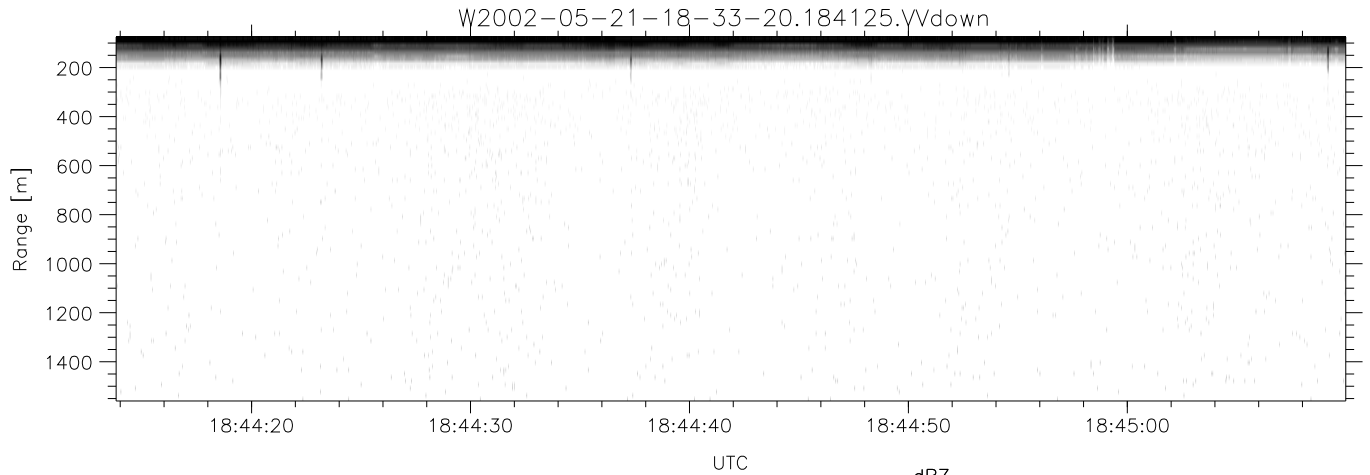


IHOP 2002 (dual-antenna config, modes 1,3,4,7) Data (cal: 49.0,50.0)

W2002-05-21-18-33-20 - PPMAG4
 IRIG:1,UTC: 18:33:09.48 to 19:02:15.66, Dur: 1746s
 TimeLngth: 1746.17s, TimeInt: 29ms (33.4pps)
 TimeCor=-13.0s, DSPDif[ms]: mn=29,mx-min=171
 PPS(min,max,std): 29,36,1.86
 Prof: 20972 to 79263, NumProf(t/r): 58291/16567
 ProcTime/Recs: 18:41:25-18:49:41/16567-33133
 MxACQtime: 33ms; DRate: 186.9KB/s; Flags: 0, 0, 0
 Pulse: 275ns, IFfilt: 5.0MHz; ppPol: HH HV VV
 TxPol: HHVV, PRF: 20 10 20 10 kHz
 Range: Delay 75m, Spacing 15m, Gates 100
 Ave. Pulses: 84, Rng/Prof Aspect@90m/s: 5.6

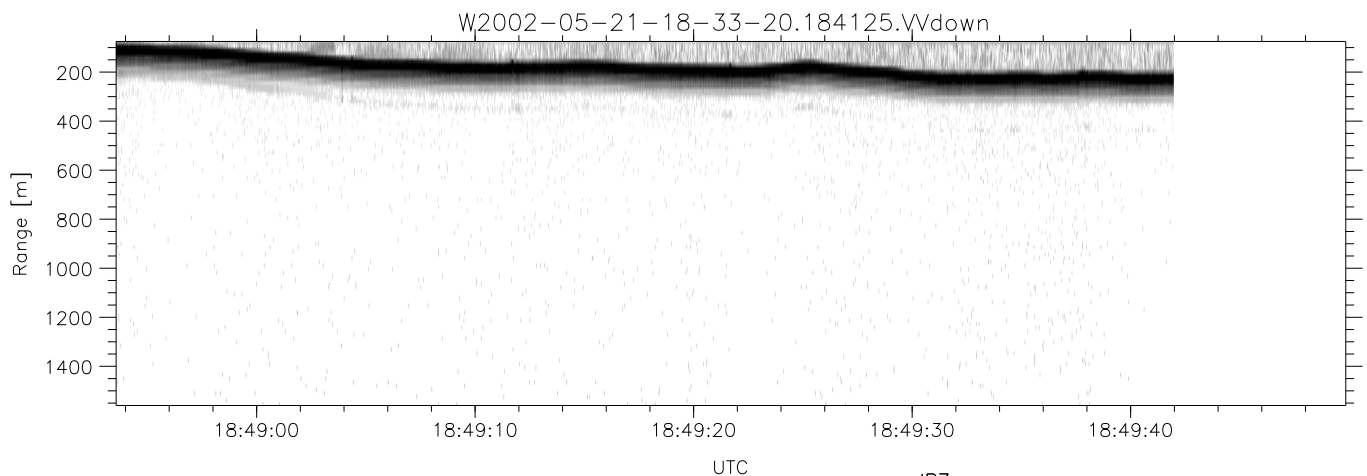
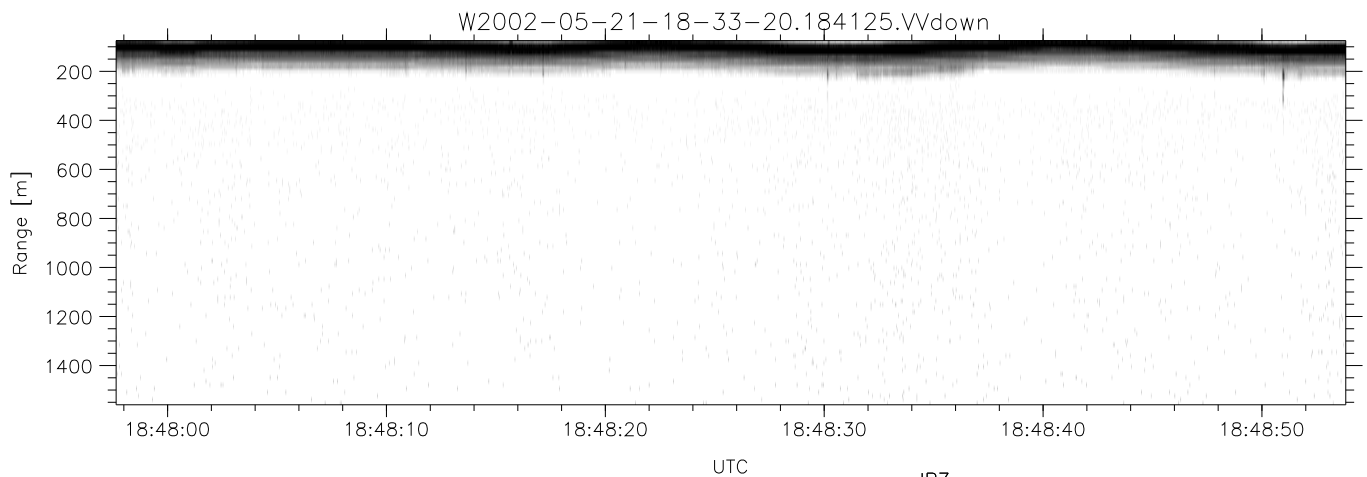
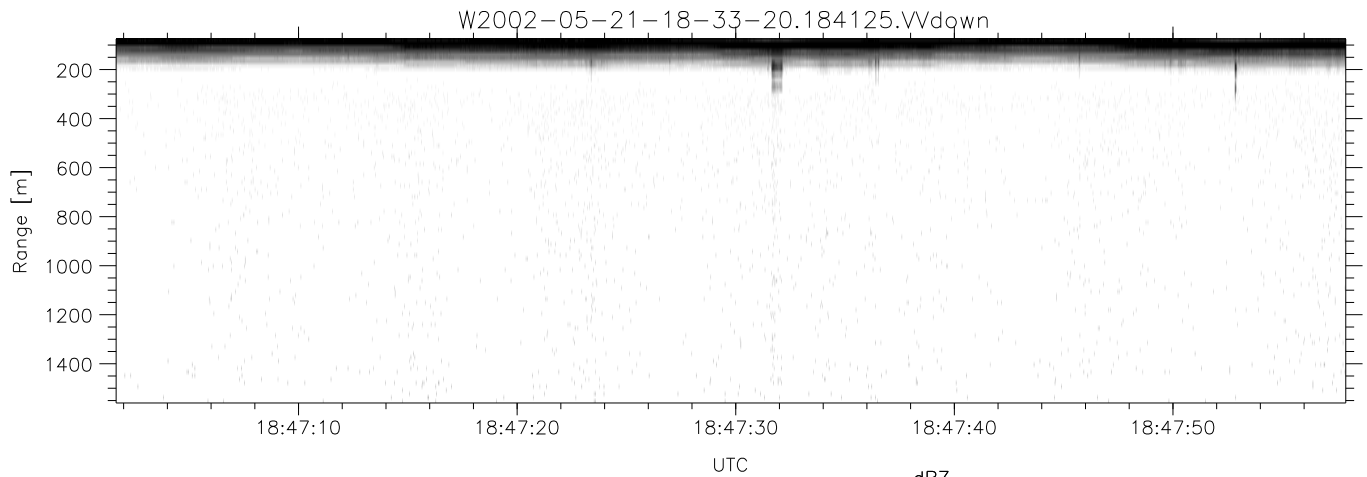
	Min	Max	Mean	Std	Varc%
hhN(dB)	-66.44	-63.01	-64.61	-74.79	9.6
vvN(dB)	-66.19	-62.77	-64.43	-74.52	9.8
hhL(dB)	-13.63	-4.59	-7.86	-13.43	27.7
vvL(dB)	-26.26	-11.03	-14.23	-19.29	31.2
ppN(m/s)	-11.83	12.41	-0.05	4.15	
ppT(m/s)	-93.47	98.04	-0.40	32.82	
hh/vv(dB)	-NaN	62.59	14.97	40.69	3732
vh/hh(dB)	-NaN	-2.80	-22.71	-14.64	642.
hv/vv(dB)	-NaN	-7.77	-30.86	-26.18	293.
hnjmp(dB)	-2.13	2.14	0.13	-8.56	13.5
vnjmp(dB)	-2.15	2.32	0.14	-8.49	13.7



IHOP 2002 (dual-antenna config, modes 1,3,4,7) Data (cal: 49.0,50.0)

W2002-05-21-18-33-20 - PPMAG4
 IRIG:1,UTC: 18:33:09.48 to 19:02:15.66, Dur: 1746s
 TimeLngth: 1746.17s, TimeInt: 29ms (33.4pps)
 TimeCor=-13.0s, DSPDif[ms]: mn=29,mx-min=171
 PPS(min,max,std): 29,36,1.86
 Prof: 20972 to 79263, NumProf(t/r): 58291/16567
 ProcTime/Recs: 18:41:25-18:49:41/16567-33133
 MxACQtime: 33ms; DRate: 186.9KB/s; Flags: 0, 0, 0
 Pulse: 275ns, IFfilt: 5.0MHz; ppPol: HH HV VV
 TxPol: HHVV, PRF: 20 10 20 10 kHz
 Range: Delay 75m, Spacing 15m, Gates 100
 Ave. Pulses: 84, Rng/Prof Aspect@90m/s: 5.6

	Min	Max	Mean	Std	Varc%
hhN(dB)	-66.44	-63.01	-64.61	-74.79	9.6
vvN(dB)	-66.19	-62.77	-64.43	-74.52	9.8
hhL(dB)	-13.63	-4.59	-7.86	-13.43	27.7
vvL(dB)	-26.26	-11.03	-14.23	-19.29	31.2
ppN(m/s)	-11.83	12.41	-0.05	4.15	
ppT(m/s)	-93.47	98.04	-0.40	32.82	
hh/vv(dB)	-NaN	62.59	14.97	40.69	3732
vh/hh(dB)	-NaN	-2.80	-22.71	-14.64	642.
hv/vv(dB)	-NaN	-7.77	-30.86	-26.18	293.
hnjmp(dB)	-2.13	2.14	0.13	-8.56	13.5
vnjmp(dB)	-2.15	2.32	0.14	-8.49	13.7



IHOP 2002 (dual-antenna config, modes 1,3,4,7) Data (cal: 49.0,50.0)

W2002-05-21-18-33-20 - PPMAG4
 IRIG:1,UTC: 18:33:09.48 to 19:02:15.66, Dur: 1746s
 TimeLngth: 1746.17s, TimeInt: 29ms (33.4pps)
 TimeCor=-13.0s, DSPDif[ms]: mn=29,mx-min=171
 PPS(min,max,std): 29,36,1.86
 Prof: 20972 to 79263, NumProf(t/r): 58291/16567
 ProcTime/Recs: 18:41:25-18:49:41/16567-33133
 MxACQtime: 33ms; DRate: 186.9KB/s; Flags: 0, 0, 0
 Pulse: 275ns, IFilt: 5.0MHz; ppPol: HH HV VV
 TxPol: HHVV, PRF: 20 10 20 10 kHz
 Range: Delay 75m, Spacing 15m, Gates 100
 Ave. Pulses: 84, Rng/Prof Aspect@90m/s: 5.6

	Min	Max	Mean	Std	Varc%
hhN(dB)	-66.44	-63.01	-64.61	-74.79	9.6
vvN(dB)	-66.19	-62.77	-64.43	-74.52	9.8
hhL(dB)	-13.63	-4.59	-7.86	-13.43	27.7
vvL(dB)	-26.26	-11.03	-14.23	-19.29	31.2
ppN(m/s)	-11.83	12.41	-0.05	4.15	
ppT(m/s)	-93.47	98.04	-0.40	32.82	
hh/vv(dB)	-NaN	62.59	14.97	40.69	3732
vh/hh(dB)	-NaN	-2.80	-22.71	-14.64	642.
hv/vv(dB)	-NaN	-7.77	-30.86	-26.18	293.
hnjmp(dB)	-2.13	2.14	0.13	-8.56	13.5
vnjmp(dB)	-2.15	2.32	0.14	-8.49	13.7