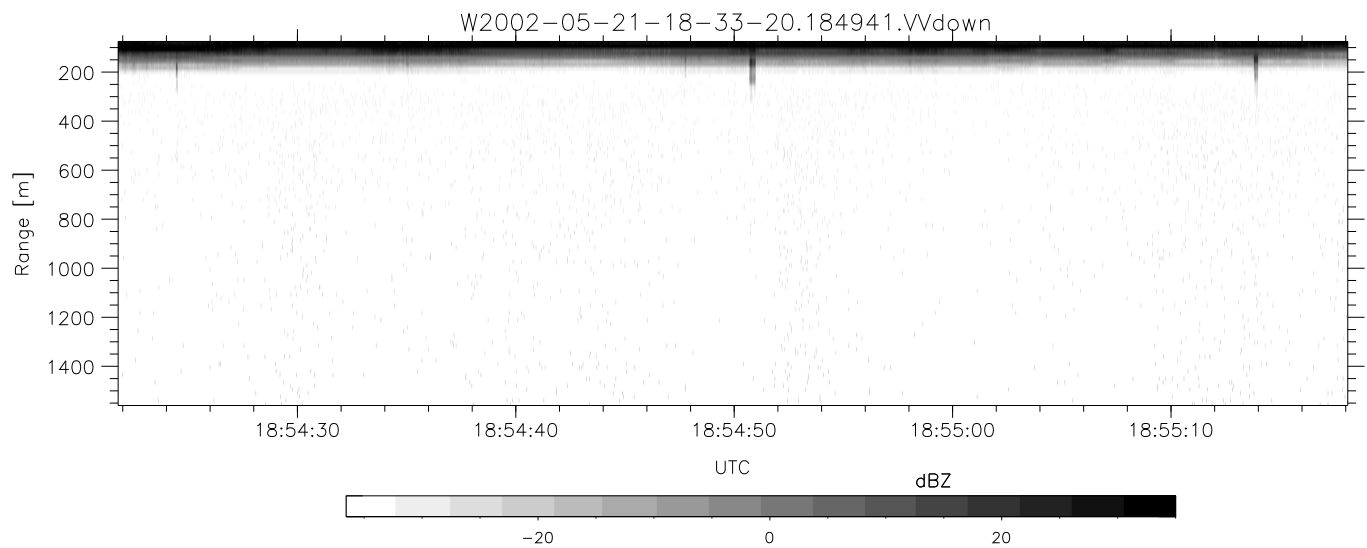
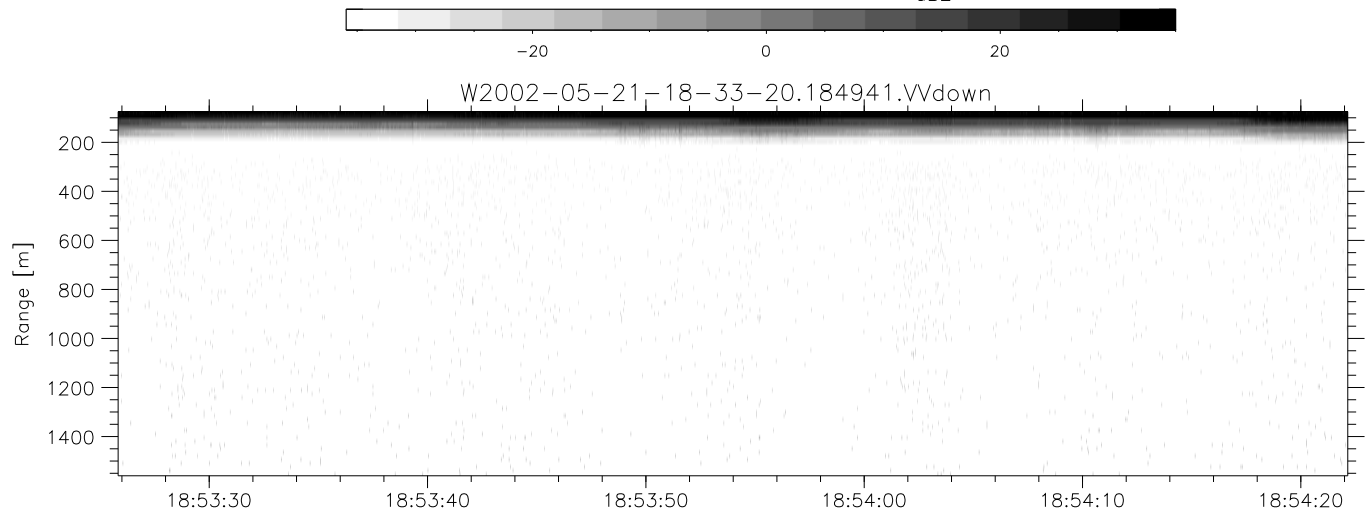
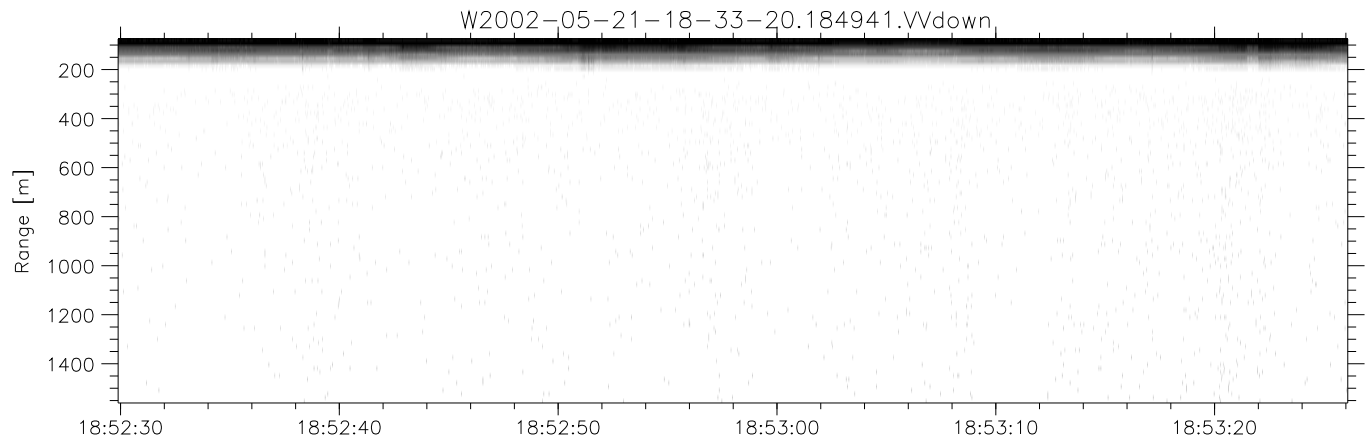


IHOP 2002 (dual-antenna config, modes 1,3,4,7) Data (cal: 49.0,50.0)

W2002-05-21-18-33-20 - PPMAG4  
 IRIG:1,UTC: 18:33:09.48 to 19:02:15.66, Dur: 1746s  
 TimeLngth: 1746.17s, TimeInt: 29ms (33.4pps)  
 TimeCor=-13.0s, DSPDif[ms]: mn=29,mx-min=167  
 PPS(min,max,std): 29,36,1.89  
 Prof: 20972 to 79263, NumProf(t/r): 58291/16567  
 ProcTime/Recs: 18:49:41-18:57:58/33134-49700  
 MxACQtime: 33ms; DRate: 186.9KB/s; Flags: 0, 0, 0  
 Pulse: 275ns, IFilt: 5.0MHz; ppPol: HH HV VV  
 TxPol: HHVV, PRF: 20 10 20 10 kHz  
 Range: Delay 75m, Spacing 15m, Gates 100  
 Ave. Pulses: 84, Rng/Prof Aspect@90m/s: 5.6

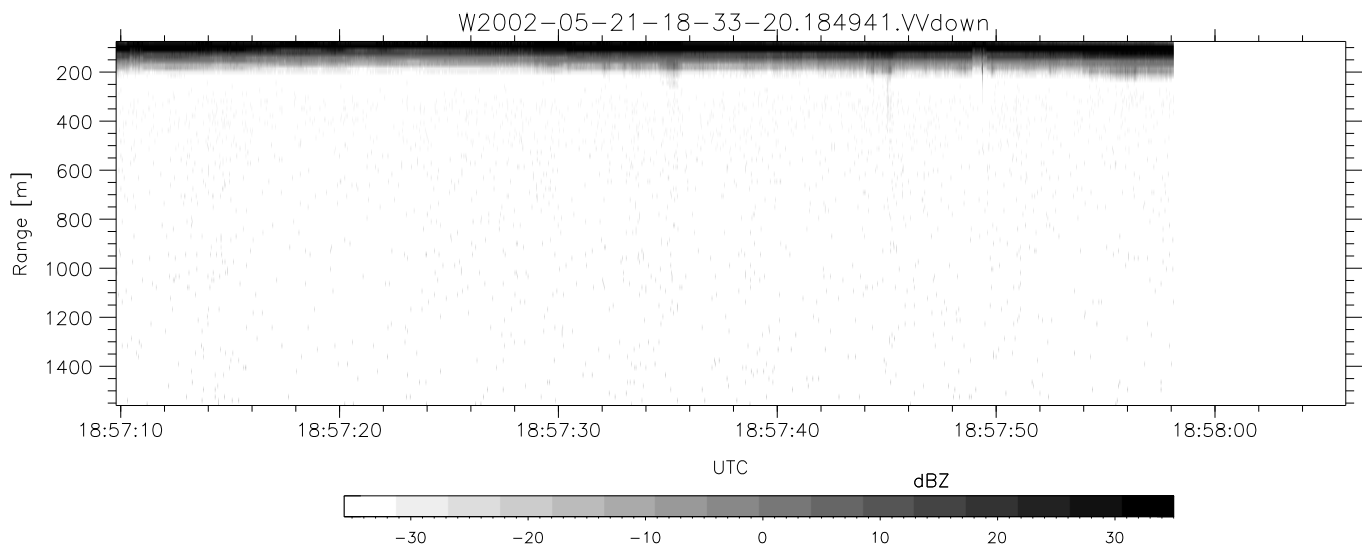
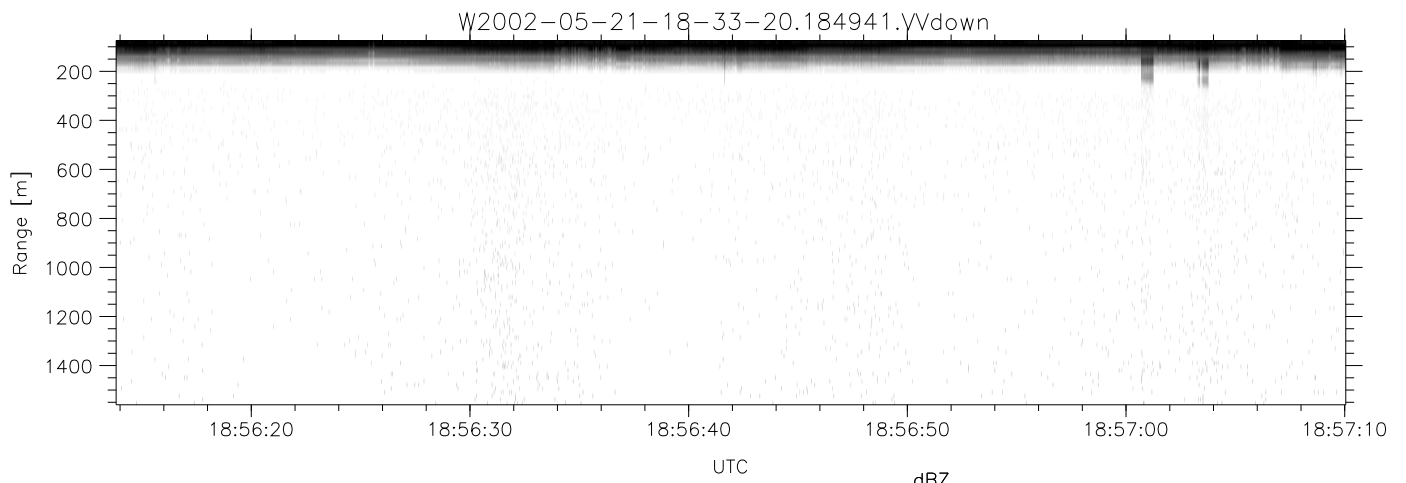
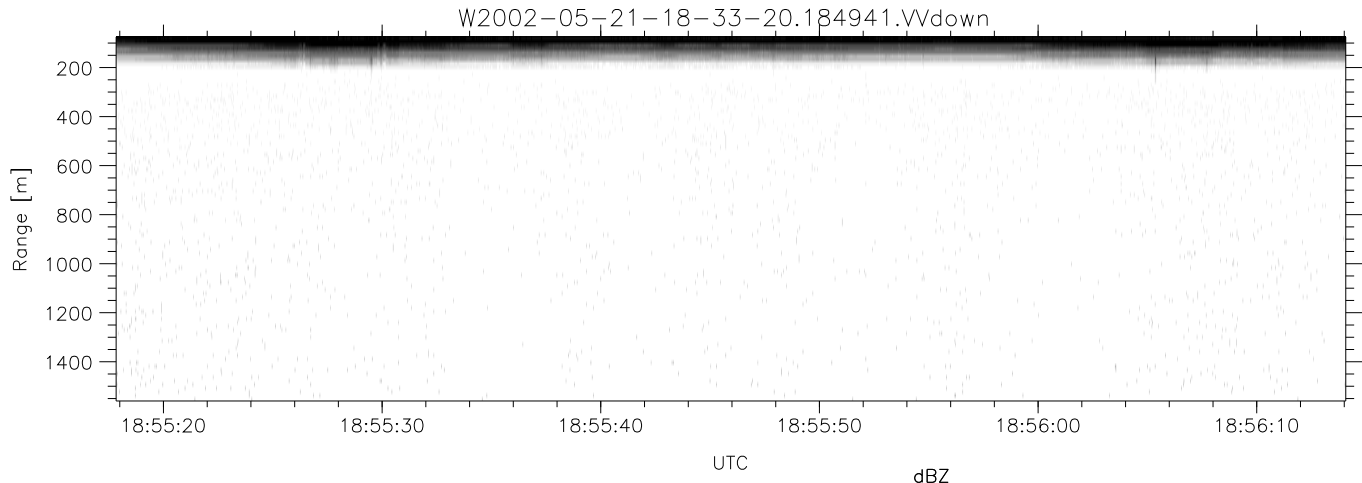
	Min	Max	Mean	Std	Varc%
hhN(dB)	-66.37	-63.13	-64.67	-74.81	9.7
vvN(dB)	-66.03	-62.88	-64.43	-74.54	9.8
hhL(dB)	-18.91	-5.20	-8.59	-13.71	30.8
vvL(dB)	-30.66	-10.95	-14.35	-19.25	32.4
ppN(m/s)	-12.43	12.54	0.02	4.16	
ppT(m/s)	-98.21	99.03	0.14	32.83	
hh/vv(dB)	-NaN	59.34	-NaN	42.87	-325
vh/hh(dB)	-NaN	-1.26	-22.32	-14.30	634.
hv/vv(dB)	-NaN	-13.46	-30.96	-26.93	252.
hnjmp(dB)	-2.15	1.97	-0.05	-8.70	13.7
vnjmp(dB)	-2.57	2.12	-0.06	-8.67	13.8



IHOP 2002 (dual-antenna config, modes 1,3,4,7) Data (cal: 49.0,50.0)

W2002-05-21-18-33-20 - PPMAG4  
 IRIG:1,UTC: 18:33:09.48 to 19:02:15.66, Dur: 1746s  
 TimeLngth: 1746.17s, TimeInt: 29ms (33.4pps)  
 TimeCor=-13.0s, DSPDif[ms]: mn=29,mx-min=167  
 PPS(min,max,std): 29,36,1.89  
 Prof: 20972 to 79263, NumProf(t/r): 58291/16567  
 ProcTime/Recs: 18:49:41-18:57:58/33134-49700  
 MxACQtime: 33ms; DRate: 186.9KB/s; Flags: 0, 0, 0  
 Pulse: 275ns, IFilt: 5.0MHz; ppPol: HH HV VV  
 TxPol: HHVV, PRF: 20 10 20 10 kHz  
 Range: Delay 75m, Spacing 15m, Gates 100  
 Ave. Pulses: 84, Rng/Prof Aspect@90m/s: 5.6

	Min	Max	Mean	Std	Varc%
hhN(dB)	-66.37	-63.13	-64.67	-74.81	9.7
vvN(dB)	-66.03	-62.88	-64.43	-74.54	9.8
hhL(dB)	-18.91	-5.20	-8.59	-13.71	30.8
vvL(dB)	-30.66	-10.95	-14.35	-19.25	32.4
ppN(m/s)	-12.43	12.54	0.02	4.16	
ppT(m/s)	-98.21	99.03	0.14	32.83	
hh/vv(dB)	-NaN	59.34	-NaN	42.87	-325
vh/hh(dB)	-NaN	-1.26	-22.32	-14.30	634.
hv/vv(dB)	-NaN	-13.46	-30.96	-26.93	252.
hnjmp(dB)	-2.15	1.97	-0.05	-8.70	13.7
vnjmp(dB)	-2.57	2.12	-0.06	-8.67	13.8



IHOP 2002 (dual-antenna config, modes 1,3,4,7) Data (cal: 49.0,50.0)

W2002-05-21-18-33-20 - PPMAG4  
 IRIG:1,UTC: 18:33:09.48 to 19:02:15.66, Dur: 1746s  
 TimeLngth: 1746.17s, TimeInt: 29ms (33.4pps)  
 TimeCor=-13.0s, DSPDif[ms]: mn=29,mx-min=167  
 PPS(min,max,std): 29,36,1.89  
 Prof: 20972 to 79263, NumProf(t/r): 58291/16567  
 ProcTime/Recs: 18:49:41-18:57:58/33134-49700  
 MxACQtime: 33ms; DRate: 186.9KB/s; Flags: 0, 0, 0  
 Pulse: 275ns, IFilt: 5.0MHz; ppPol: HH HV VV  
 TxPol: HHVV, PRF: 20 10 20 10 kHz  
 Range: Delay 75m, Spacing 15m, Gates 100  
 Ave. Pulses: 84, Rng/Prof Aspect@90m/s: 5.6

	Min	Max	Mean	Std	Varc%
hhN(dB)	-66.37	-63.13	-64.67	-74.81	9.7
vvN(dB)	-66.03	-62.88	-64.43	-74.54	9.8
hhL(dB)	-18.91	-5.20	-8.59	-13.71	30.8
vvL(dB)	-30.66	-10.95	-14.35	-19.25	32.4
ppN(m/s)	-12.43	12.54	0.02	4.16	
ppT(m/s)	-98.21	99.03	0.14	32.83	
hh/vv(dB)	-NaN	59.34	-NaN	42.87	-325
vh/hh(dB)	-NaN	-1.26	-22.32	-14.30	634.
hv/vv(dB)	-NaN	-13.46	-30.96	-26.93	252.
hnjmp(dB)	-2.15	1.97	-0.05	-8.70	13.7
vnjmp(dB)	-2.57	2.12	-0.06	-8.67	13.8