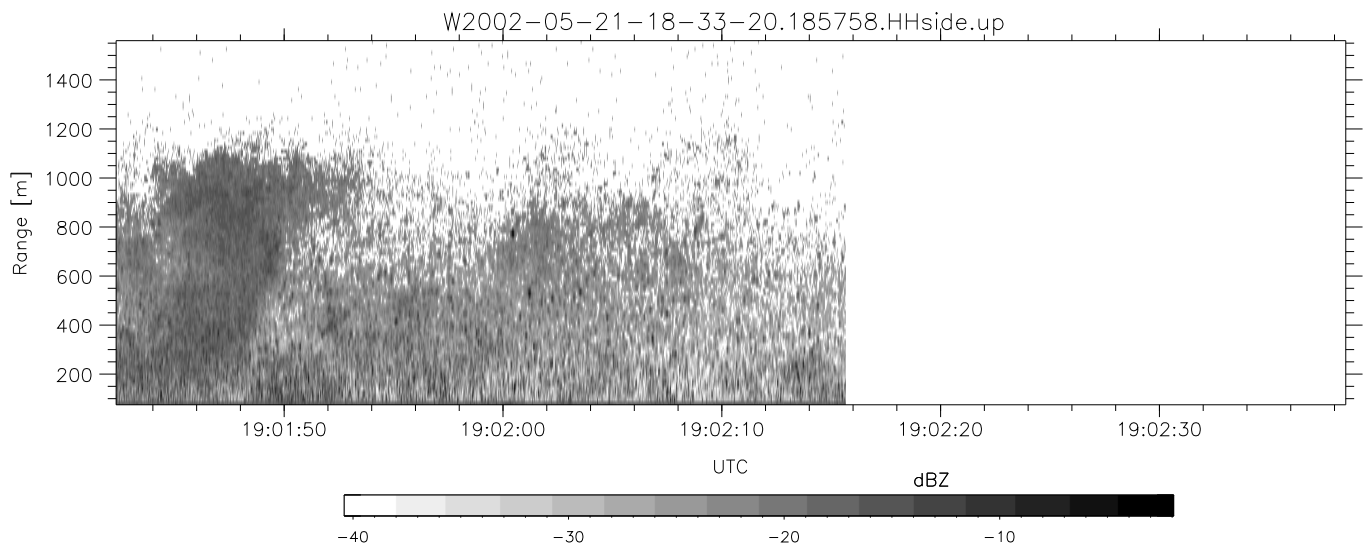
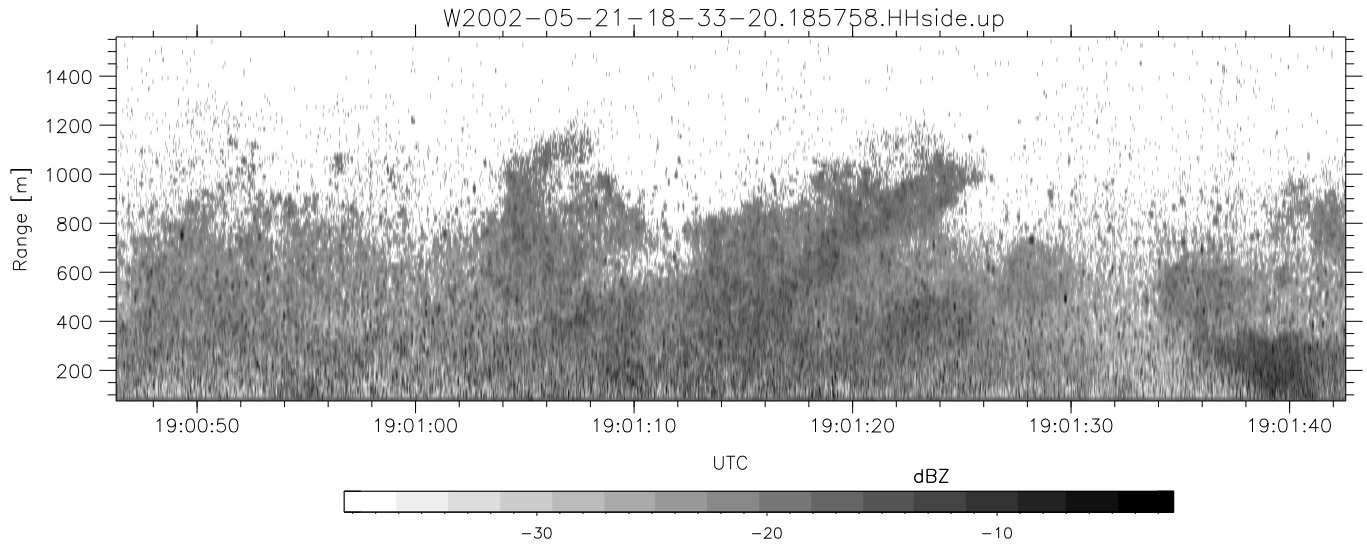


IHOP 2002 (dual-antenna config, modes 1,3,4,7) Data (cal: 49.0,50.0)

W2002-05-21-18-33-20 - PPMAG4
 IRIG:1,UTC: 18:33:09.48 to 19:02:15.66, Dur: 1746s
 TimeLngth: 1746.17s, TimeInt: 29ms (33.4pps)
 TimeCor=-13.0s, DSPDif[ms]: mn=30,mx-min=162
 PPS(min,max,std): 29,36,1.91
 Prof: 20972 to 79263, NumProf(t/r): 58291/8590
 ProcTime/Recs: 18:57:58-19:02:15/49701-58290
 MxACQtime: 33ms; DRate: 186.9KB/s; Flags: 0, 0, 0
 Pulse: 275ns, IFfilt: 5.0MHz; ppPol: HH HV VV
 TxPol: HHVV, PRF: 20 10 20 10 kHz
 Range: Delay 75m, Spacing 15m, Gates 100
 Ave. Pulses: 84, Rng/Prof Aspect@90m/s: 5.6

| | Min | Max | Mean | Std | Varc% |
|-----------|--------|--------|--------|--------|-------|
| hhN(dB) | -66.50 | -63.25 | -64.71 | -74.90 | 9.6 |
| vvN(dB) | -66.19 | -63.05 | -64.50 | -74.68 | 9.6 |
| hhL(dB) | -14.01 | -5.94 | -9.43 | -15.19 | 26.6 |
| vvL(dB) | -29.53 | -11.88 | -14.02 | -19.96 | 25.5 |
| ppN(m/s) | -12.61 | 12.20 | -0.08 | 4.19 | |
| ppT(m/s) | -99.61 | 96.40 | -0.60 | 33.12 | |
| hh/vv(dB) | -NaN | 62.60 | -NaN | 44.24 | -985 |
| vh/hh(dB) | -NaN | -1.91 | -24.23 | -15.75 | 704. |
| hv/vv(dB) | -54.89 | -8.17 | -31.35 | -26.81 | 284. |
| hnjmp(dB) | -2.46 | 2.56 | 0.14 | -8.54 | 13.6 |
| vnjmp(dB) | -1.91 | 2.30 | 0.13 | -8.55 | 13.5 |



IHOP 2002 (dual-antenna config, modes 1,3,4,7) Data (cal: 49.0,50.0)

W2002-05-21-18-33-20 - PPMAG4
 IRIG:1,UTC: 18:33:09.48 to 19:02:15.66, Dur: 1746s
 TimeLngth: 1746.17s, TimeInt: 29ms (33.4pps)
 TimeCor=-13.0s, DSPDif[ms]: mn=30,mx-min=162
 PPS(min,max,std): 29,36,1.91
 Prof: 20972 to 79263, NumProf(t/r): 58291/8590
 ProcTime/Recs: 18:57:58-19:02:15/49701-58290
 MxACQtime: 33ms; DRate: 186.9KB/s; Flags: 0, 0, 0
 Pulse: 275ns, IFilt: 5.0MHz; ppPol: HH HV VV
 TxPol: HHVV, PRF: 20 10 20 10 kHz
 Range: Delay 75m, Spacing 15m, Gates 100
 Ave. Pulses: 84, Rng/Prof Aspect@90m/s: 5.6

| | Min | Max | Mean | Std | Varc% |
|-----------|--------|--------|--------|--------|-------|
| hhN(dB) | -66.50 | -63.25 | -64.71 | -74.90 | 9.6 |
| vvN(dB) | -66.19 | -63.05 | -64.50 | -74.68 | 9.6 |
| hhL(dB) | -14.01 | -5.94 | -9.43 | -15.19 | 26.6 |
| vvL(dB) | -29.53 | -11.88 | -14.02 | -19.96 | 25.5 |
| ppN(m/s) | -12.61 | 12.20 | -0.08 | 4.19 | |
| ppT(m/s) | -99.61 | 96.40 | -0.60 | 33.12 | |
| hh/vv(dB) | -NaN | 62.60 | -NaN | 44.24 | -985 |
| vh/hh(dB) | -NaN | -1.91 | -24.23 | -15.75 | 704. |
| hv/vv(dB) | -54.89 | -8.17 | -31.35 | -26.81 | 284. |
| hnjmp(dB) | -2.46 | 2.56 | 0.14 | -8.54 | 13.6 |
| vnjmp(dB) | -1.91 | 2.30 | 0.13 | -8.55 | 13.5 |