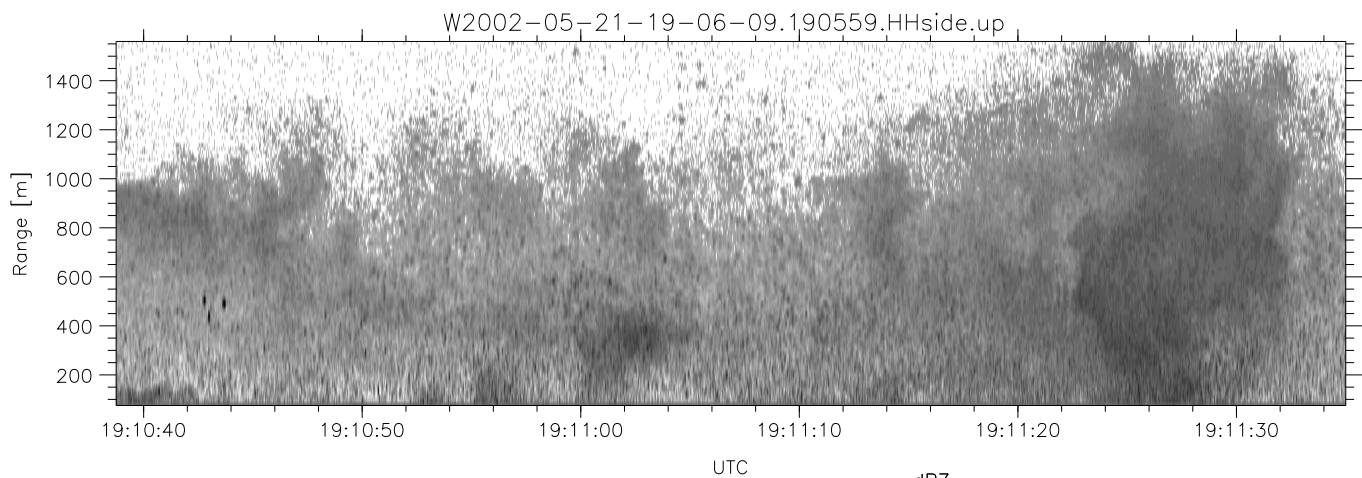
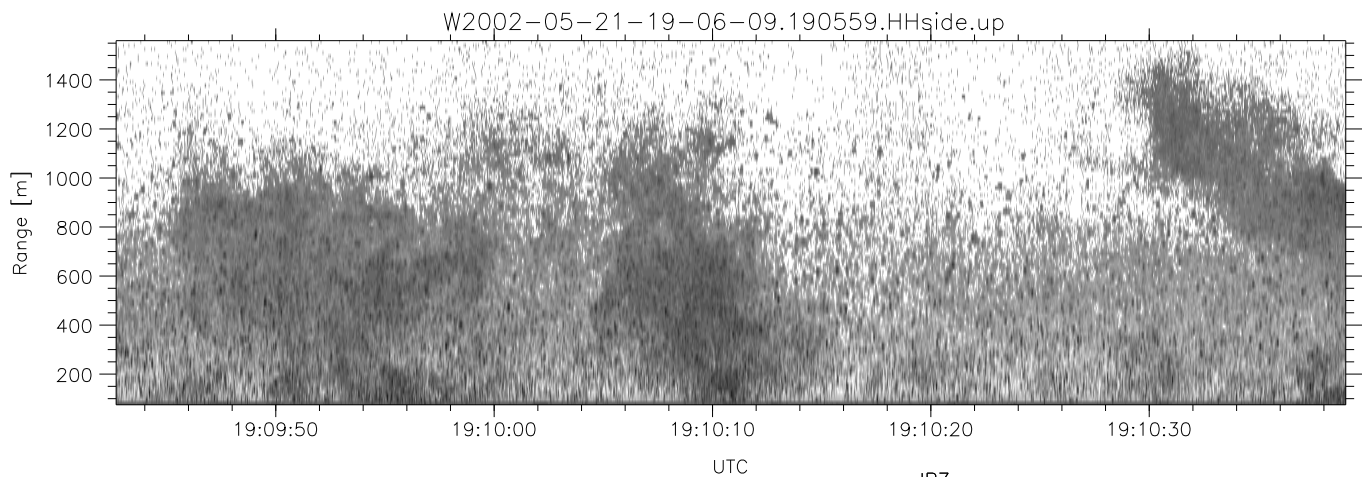
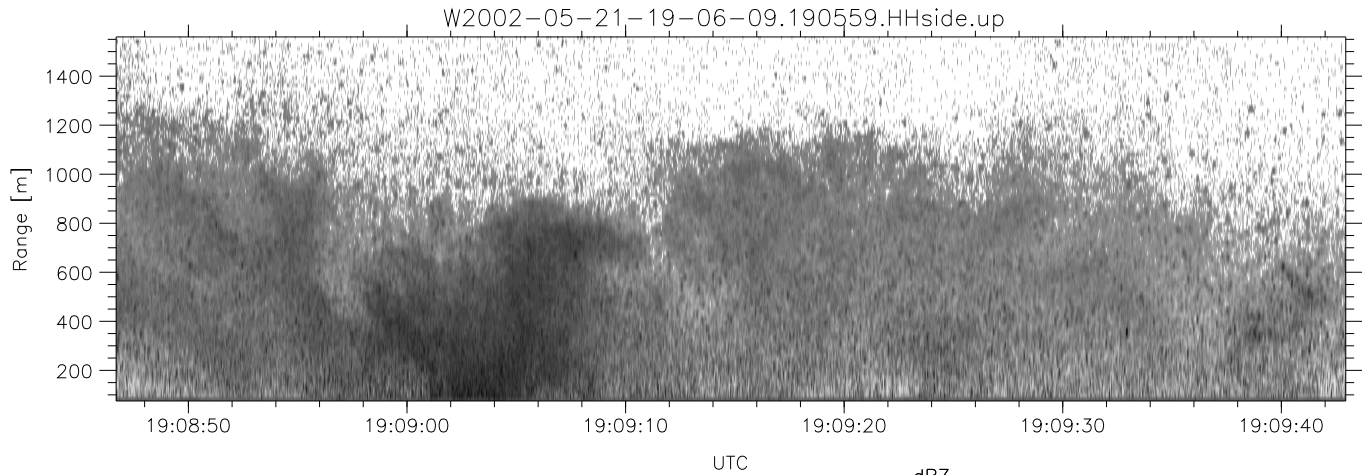


IHOP 2002 (dual-antenna config, modes 1,3,4,7) Data (cal: 49.0,50.0)

W2002-05-21-19-06-09 - SPPMAG  
 IRIG:1,UTC: 19:05:59.4 to 19:17:13.12, Dur: 674s  
 TimeLngth: 674.07s, TimeInt: 30ms (33.0pps)  
 TimeCor=-13.0s, DSPDif[ms]: mn=30,mx-min=480  
 PPS(min,max,std): 19,35,1.86  
 Prof: 138 to 22381, NumProf(t/r): 22243/16065  
 ProcTime/Recs: 19:05:59-19:14:05/0-16064  
 MxACQtime: 26ms; DRate: 53.2KB/s; Flags: 0, 0, 0  
 Pulse: 275ns, IFfilt: 5.0MHz; ppPol: HH  
 TxPol: H, PRF: 20 kHz  
 Range: Delay 75m, Spacing 15m, Gates 100  
 Ave. Pulses: 520, Rng/Prof Aspect@90m/s: 5.5

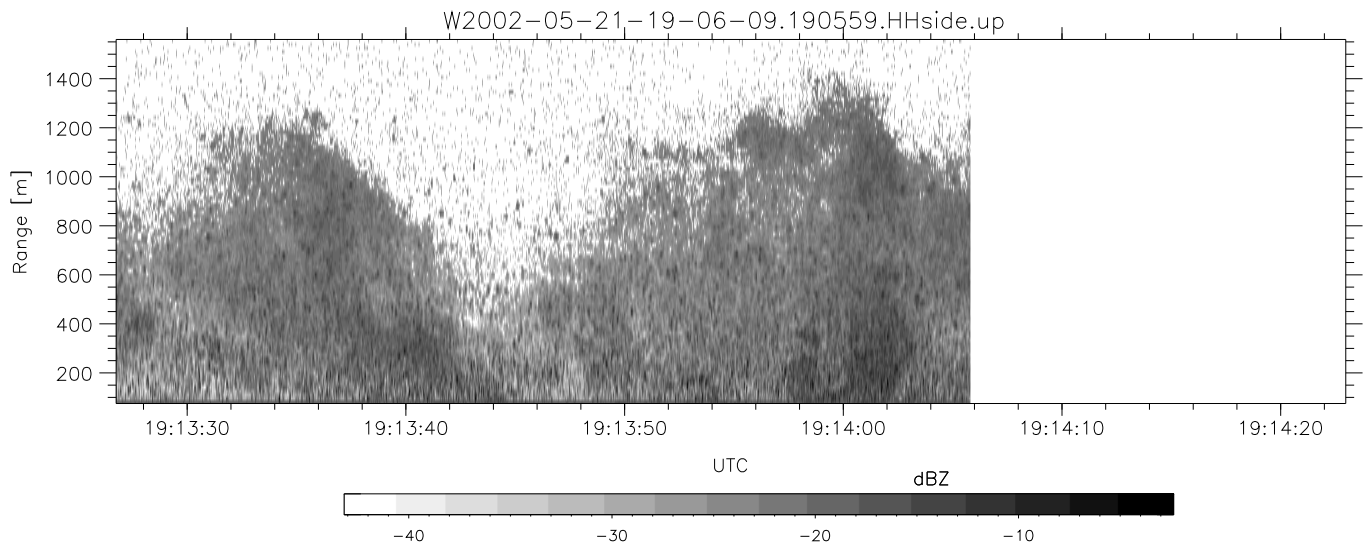
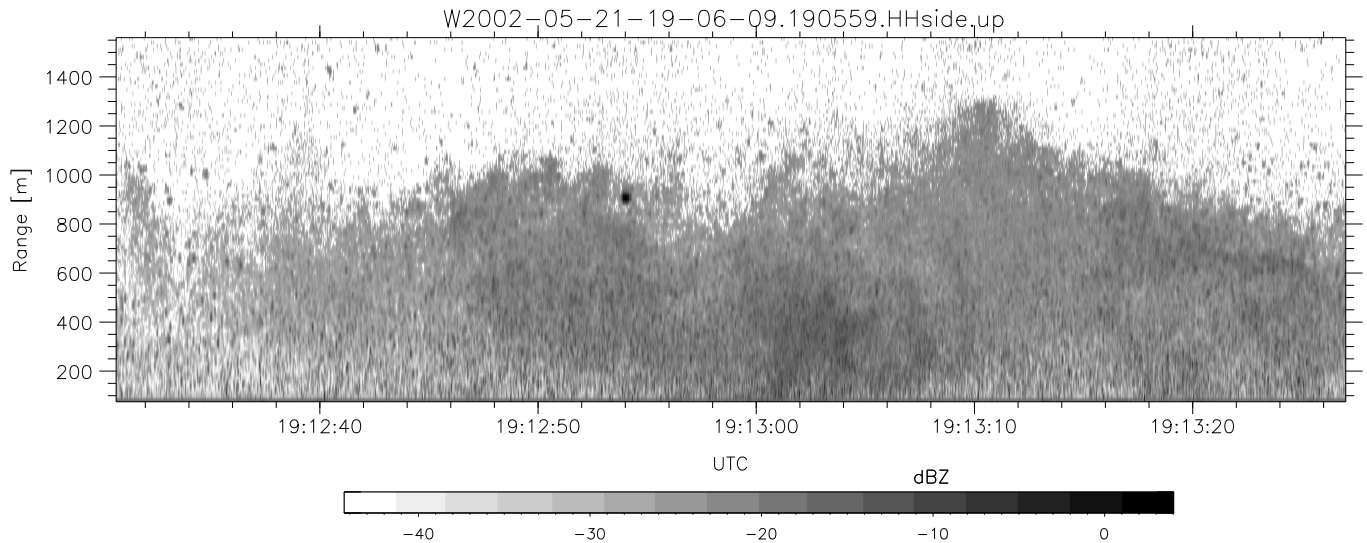
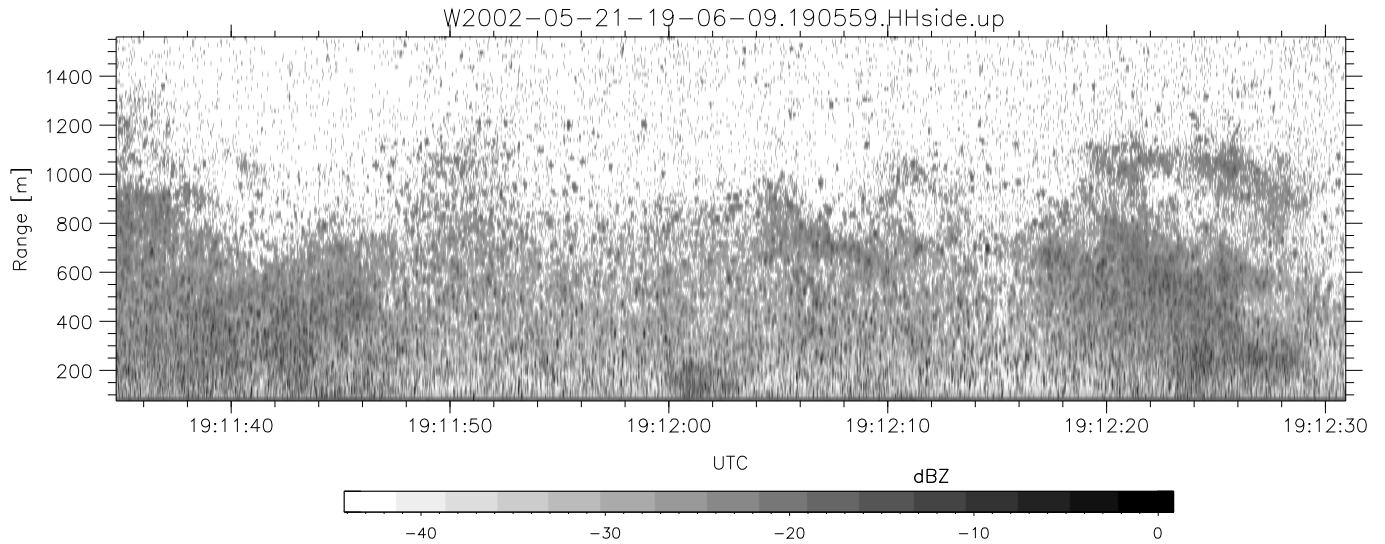
	Min	Max	Mean	Std	Varc%
hhN(dB)	-65.42	-64.06	-64.73	-78.67	4.0
vvN(dB)	-65.20	-63.84	-64.50	-78.47	4.0
hhL(dB)	-13.90	-6.65	-9.94	-16.58	21.7
vhL(dB)	-14.64	-8.04	-11.96	-18.64	21.4
ppN(m/s)	-15.80	15.79	-0.07	9.00	
ppT(m/s)	-0.02	0.01	-0.00	0.00	
vh/hh(dB)	-NaN	8.57	-21.12	-7.23	2448
hnjmp(dB)	-1.02	0.88	-0.10	-12.77	5.4
vnjmp(dB)	-1.00	0.86	-0.08	-12.73	5.4



IHOP 2002 (dual-antenna config, modes 1,3,4,7) Data (cal: 49.0,50.0)

W2002-05-21-19-06-09 - SPPMAG  
 IRIG:1,UTC: 19:05:59.4 to 19:17:13.12, Dur: 674s  
 TimeLngth: 674.07s, TimeInt: 30ms (33.0pps)  
 TimeCor=-13.0s, DSPDif[ms]: mn=30,mx-min=480  
 PPS(min,max,std): 19,35,1.86  
 Prof: 138 to 22381, NumProf(t/r): 22243/16065  
 ProcTime/Recs: 19:05:59-19:14:05/0-16064  
 MxACQtime: 26ms; DRate: 53.2KB/s; Flags: 0, 0, 0  
 Pulse: 275ns, IFfilt: 5.0MHz; ppPol: HH  
 TxPol: H, PRF: 20 kHz  
 Range: Delay 75m, Spacing 15m, Gates 100  
 Ave. Pulses: 520, Rng/Prof Aspect@90m/s: 5.5

	Min	Max	Mean	Std	Varc%
hhN(dB)	-65.42	-64.06	-64.73	-78.67	4.0
vvN(dB)	-65.20	-63.84	-64.50	-78.47	4.0
hhL(dB)	-13.90	-6.65	-9.94	-16.58	21.7
vhL(dB)	-14.64	-8.04	-11.96	-18.64	21.4
ppN(m/s)	-15.80	15.79	-0.07	9.00	
ppT(m/s)	-0.02	0.01	-0.00	0.00	
vh/hh(dB)	-NaN	8.57	-21.12	-7.23	2448
hnjmp(dB)	-1.02	0.88	-0.10	-12.77	5.4
vnjmp(dB)	-1.00	0.86	-0.08	-12.73	5.4



IHOP 2002 (dual-antenna config, modes 1,3,4,7) Data (cal: 49.0,50.0)

W2002-05-21-19-06-09 - SPPMAG  
 IRIG:1,UTC: 19:05:59.4 to 19:17:13.12, Dur: 674s  
 TimeLngth: 674.07s, TimeInt: 30ms (33.0pps)  
 TimeCor=-13.0s, DSPDif[ms]: mn=30,mx-min=480  
 PPS(min,max,std): 19,35,1.86  
 Prof: 138 to 22381, NumProf(t/r): 22243/16065  
 ProcTime/Recs: 19:05:59-19:14:05/0-16064  
 MxACQtime: 26ms; DRate: 53.2KB/s; Flags: 0, 0, 0  
 Pulse: 275ns, IFfilt: 5.0MHz; ppPol: HH  
 TxPol: H, PRF: 20 kHz  
 Range: Delay 75m, Spacing 15m, Gates 100  
 Ave. Pulses: 520, Rng/Prof Aspect@90m/s: 5.5

	Min	Max	Mean	Std	Varc%
hhN(dB)	-65.42	-64.06	-64.73	-78.67	4.0
vvN(dB)	-65.20	-63.84	-64.50	-78.47	4.0
hhL(dB)	-13.90	-6.65	-9.94	-16.58	21.7
vhL(dB)	-14.64	-8.04	-11.96	-18.64	21.4
ppN(m/s)	-15.80	15.79	-0.07	9.00	
ppT(m/s)	-0.02	0.01	-0.00	0.00	
vh/hh(dB)	-NaN	8.57	-21.12	-7.23	2448
hnjmp(dB)	-1.02	0.88	-0.10	-12.77	5.4
vnjmp(dB)	-1.00	0.86	-0.08	-12.73	5.4