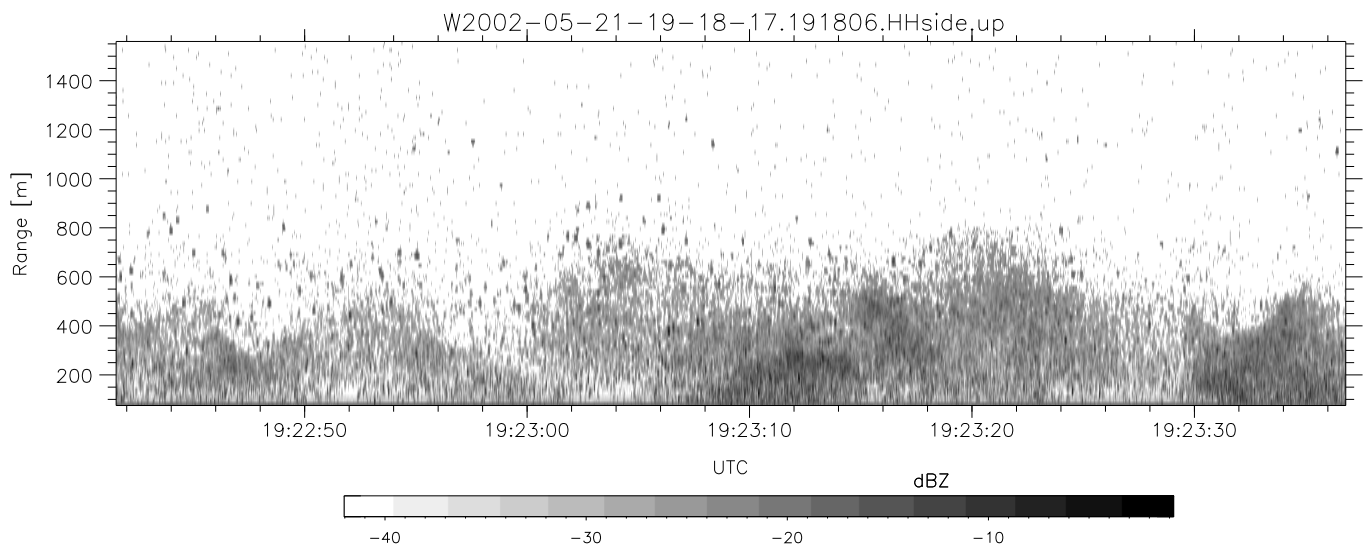
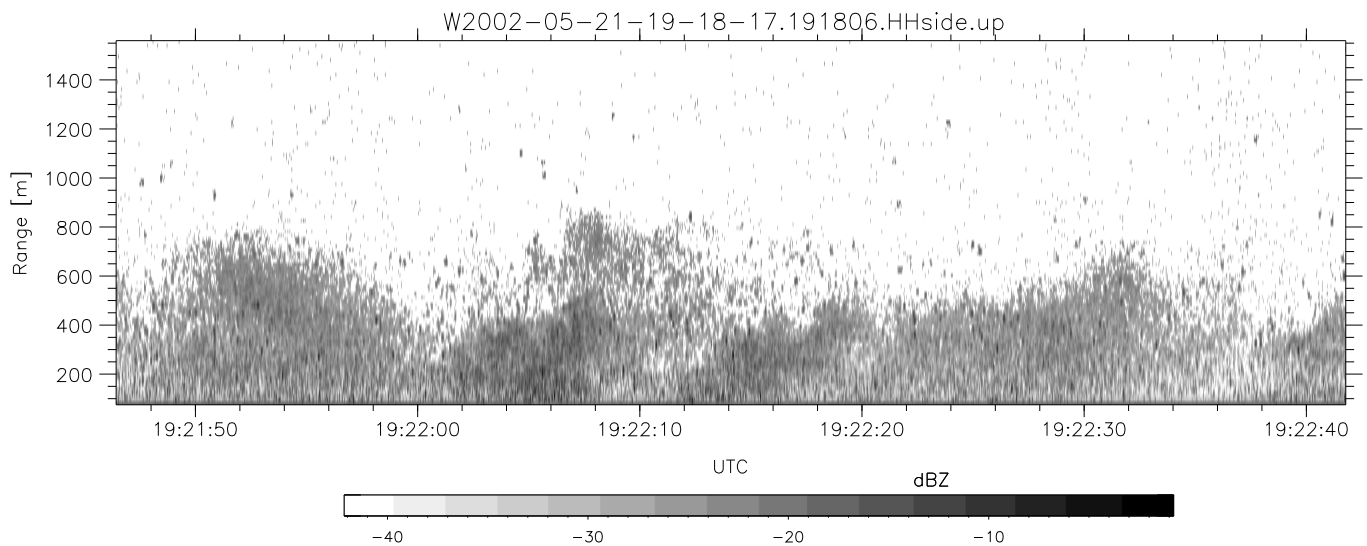
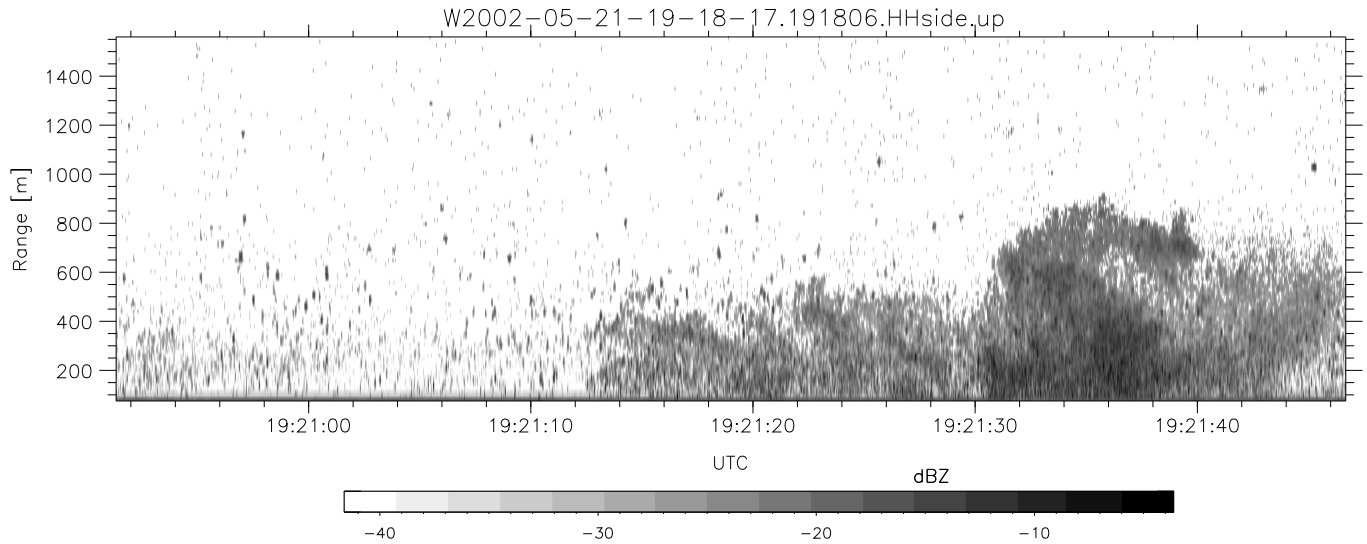


IHOP 2002 (dual-antenna config, modes 1,3,4,7) Data (cal: 49.0,50.0)

W2002-05-21-19-18-17 - PPMAG4
 IRIG:1,UTC: 19:18:06.47 to 20:53:54.62, Dur: 5748s
 TimeLngth: 5748.15s, TimeInt: 30ms (32.7pps)
 TimeCor=-13.0s, DSPDif[ms]: mn=29,mx-min=173
 PPS(min,max,std): 10,36,2.22
 Prof: 112 to 188351, NumProf(t/r): 188239/16065
 ProcTime/Recs: 19:18:06-19:26:08/0-16064
 MxAcQtime: 33ms; DRate: 183.3KB/s; Flags: 0, 0, 0
 Pulse: 275ns, IFilt: 5.0MHz; ppPol: HH HV VV
 TxPol: HHVV, PRF: 20 10 20 10 kHz
 Range: Delay 75m, Spacing 15m, Gates 100
 Ave. Pulses: 84, Rng/Prof Aspect@90m/s: 5.5

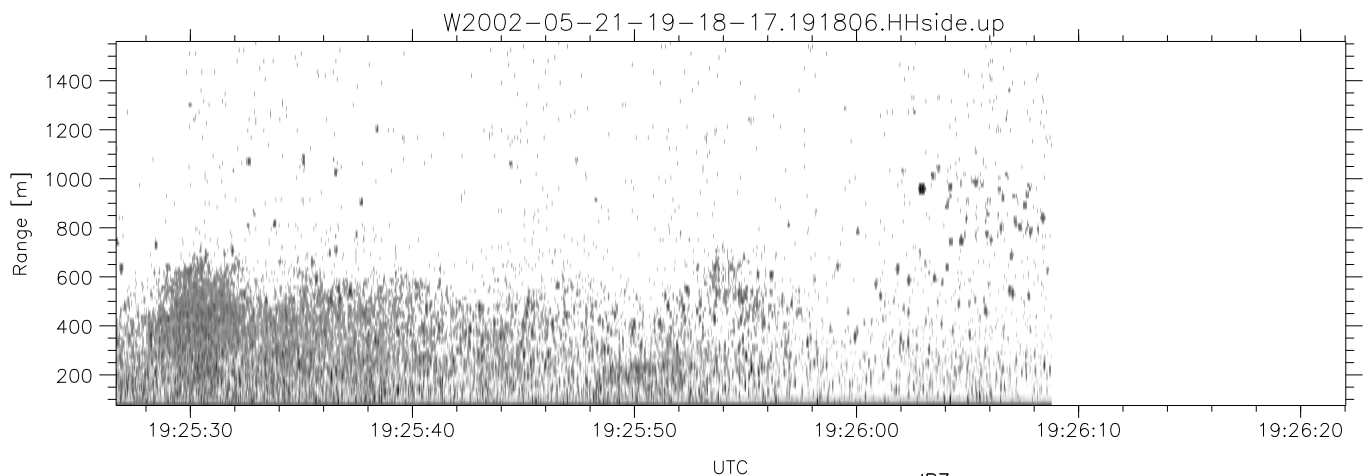
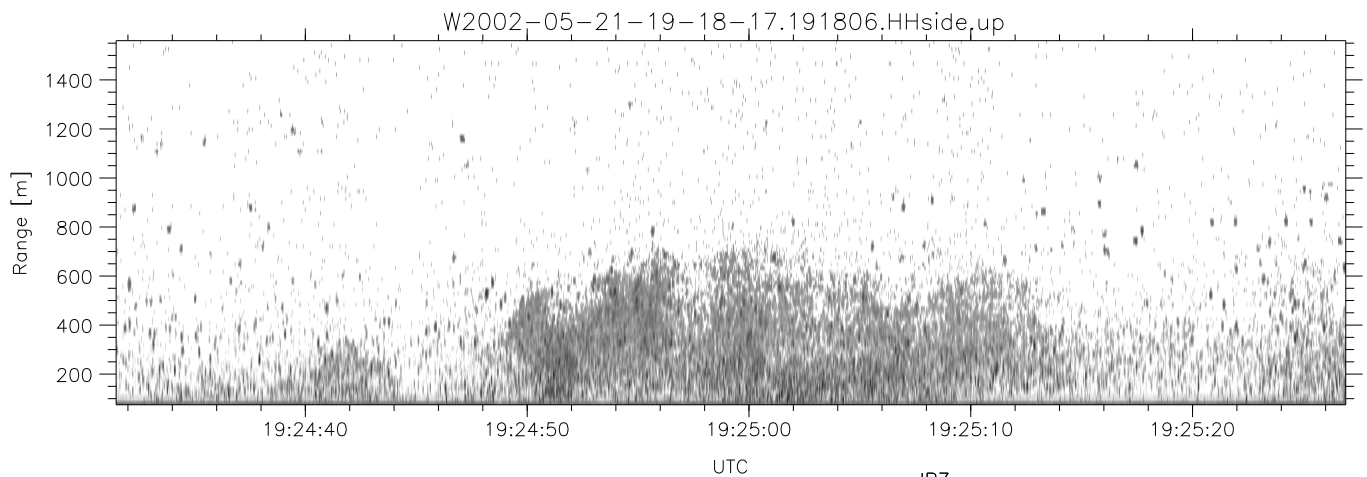
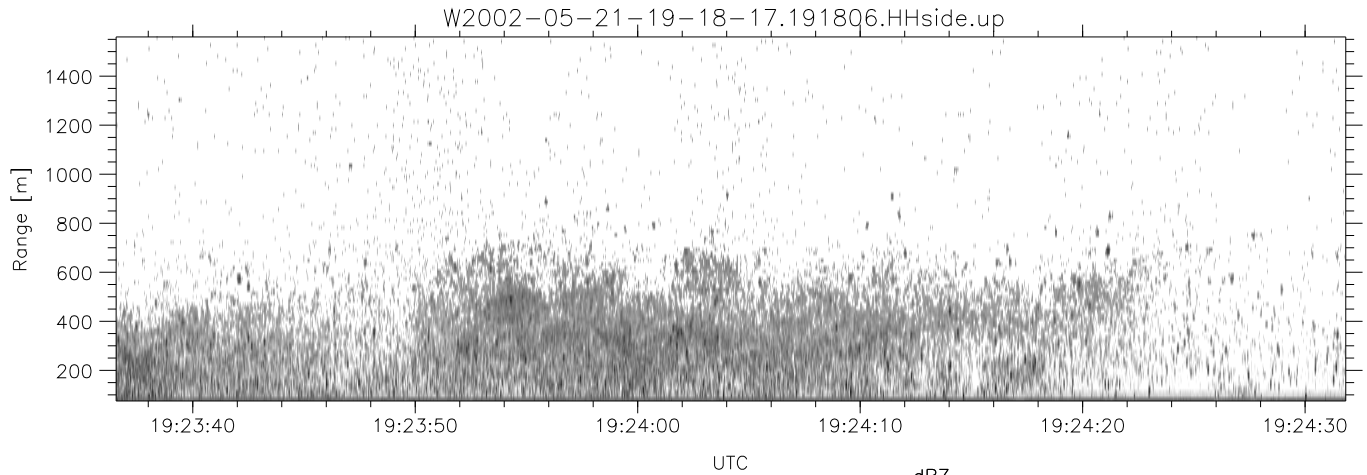
	Min	Max	Mean	Std	Varc%
hhN(dB)	-66.51	-63.29	-64.90	-75.02	9.7
vvN(dB)	-66.43	-63.01	-64.57	-74.68	9.7
hhL(dB)	-20.44	-7.70	-11.29	-16.42	30.7
vvL(dB)	-19.25	-10.44	-13.11	-20.29	19.2
ppN(m/s)	-12.94	12.29	-0.04	4.14	
ppT(m/s)	-102.2	97.07	-0.35	32.74	
hh/vv(dB)	-NaN	51.39	-NaN	44.16	-354
vh/hh(dB)	-NaN	-28.34	-34.38	-34.60	95.1
hv/vv(dB)	-NaN	-33.61	-54.06	-45.27	756.
hnjmp(dB)	-2.24	2.26	-0.06	-8.69	13.7
vnjmp(dB)	-2.44	1.99	-0.06	-8.67	13.8



IHOP 2002 (dual-antenna config, modes 1,3,4,7) Data (cal: 49.0,50.0)

W2002-05-21-19-18-17 - PPMAG4
 IRIG:1,UTC: 19:18:06.47 to 20:53:54.62, Dur: 5748s
 TimeLngth: 5748.15s, TimeInt: 30ms (32.7pps)
 TimeCor=-13.0s, DSPDif[ms]: mn=29,mx-min=173
 PPS(min,max,std): 10,36,2.22
 Prof: 112 to 188351, NumProf(t/r): 188239/16065
 ProcTime/Recs: 19:18:06-19:26:08/0-16064
 MxACQtime: 33ms; DRate: 183.3KB/s; Flags: 0, 0, 0
 Pulse: 275ns, IFfilt: 5.0MHz; ppPol: HH HV VV
 TxPol: HHVV, PRF: 20 10 20 10 kHz
 Range: Delay 75m, Spacing 15m, Gates 100
 Ave. Pulses: 84, Rng/Prof Aspect@90m/s: 5.5

	Min	Max	Mean	Std	Varc%
hhN(dB)	-66.51	-63.29	-64.90	-75.02	9.7
vvN(dB)	-66.43	-63.01	-64.57	-74.68	9.7
hhL(dB)	-20.44	-7.70	-11.29	-16.42	30.7
vvL(dB)	-19.25	-10.44	-13.11	-20.29	19.2
ppN(m/s)	-12.94	12.29	-0.04	4.14	
ppT(m/s)	-102.2	97.07	-0.35	32.74	
hh/vv(dB)	-NaN	51.39	-NaN	44.16	-354
vh/hh(dB)	-NaN	-28.34	-34.38	-34.60	95.1
hv/vv(dB)	-NaN	-33.61	-54.06	-45.27	756.
hh/jmp(dB)	-2.24	2.26	-0.06	-8.69	13.7
vv/jmp(dB)	-2.44	1.99	-0.06	-8.67	13.8



IHOP 2002 (dual-antenna config, modes 1,3,4,7) Data (cal: 49.0,50.0)

W2002-05-21-19-18-17 - PPMAG4
 IRIG:1,UTC: 19:18:06.47 to 20:53:54.62, Dur: 5748s
 TimeLngth: 5748.15s, TimeInt: 30ms (32.7pps)
 TimeCor=-13.0s, DSPDif[ms]: mn=29,mx-min=173
 PPS(min,max,std): 10,36,2.22
 Prof: 112 to 188351, NumProf(t/r): 188239/16065
 ProcTime/Recs: 19:18:06-19:26:08/0-16064
 MxACQtime: 33ms; DRate: 183.3KB/s; Flags: 0, 0, 0
 Pulse: 275ns, IFfilt: 5.0MHz; ppPol: HH HV VV
 TxPol: HHVV, PRF: 20 10 20 10 kHz
 Range: Delay 75m, Spacing 15m, Gates 100
 Ave. Pulses: 84, Rng/Prof Aspect@90m/s: 5.5

	Min	Max	Mean	Std	Varc%
hhN(dB)	-66.51	-63.29	-64.90	-75.02	9.7
vvN(dB)	-66.43	-63.01	-64.57	-74.68	9.7
hhL(dB)	-20.44	-7.70	-11.29	-16.42	30.7
vvL(dB)	-19.25	-10.44	-13.11	-20.29	19.2
ppN(m/s)	-12.94	12.29	-0.04	4.14	
ppT(m/s)	-102.2	97.07	-0.35	32.74	
hh/vv(dB)	-NaN	51.39	-NaN	44.16	-354
vh/hh(dB)	-NaN	-28.34	-34.38	-34.60	95.1
hv/vv(dB)	-NaN	-33.61	-54.06	-45.27	756.
hnjmp(dB)	-2.24	2.26	-0.06	-8.69	13.7
vnjmp(dB)	-2.44	1.99	-0.06	-8.67	13.8