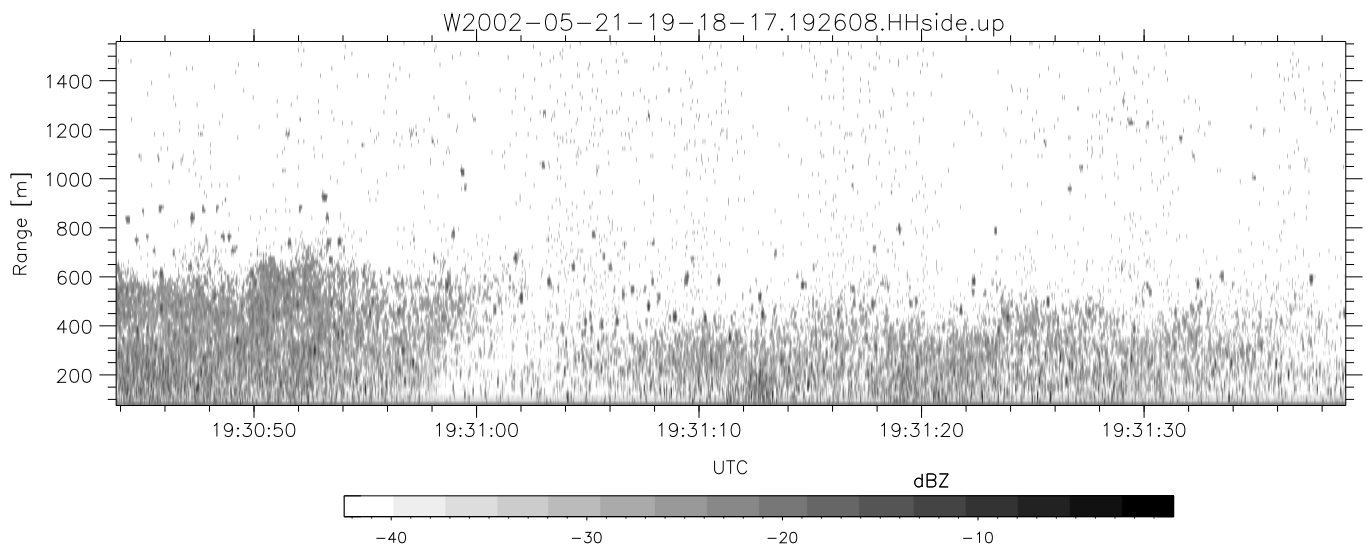
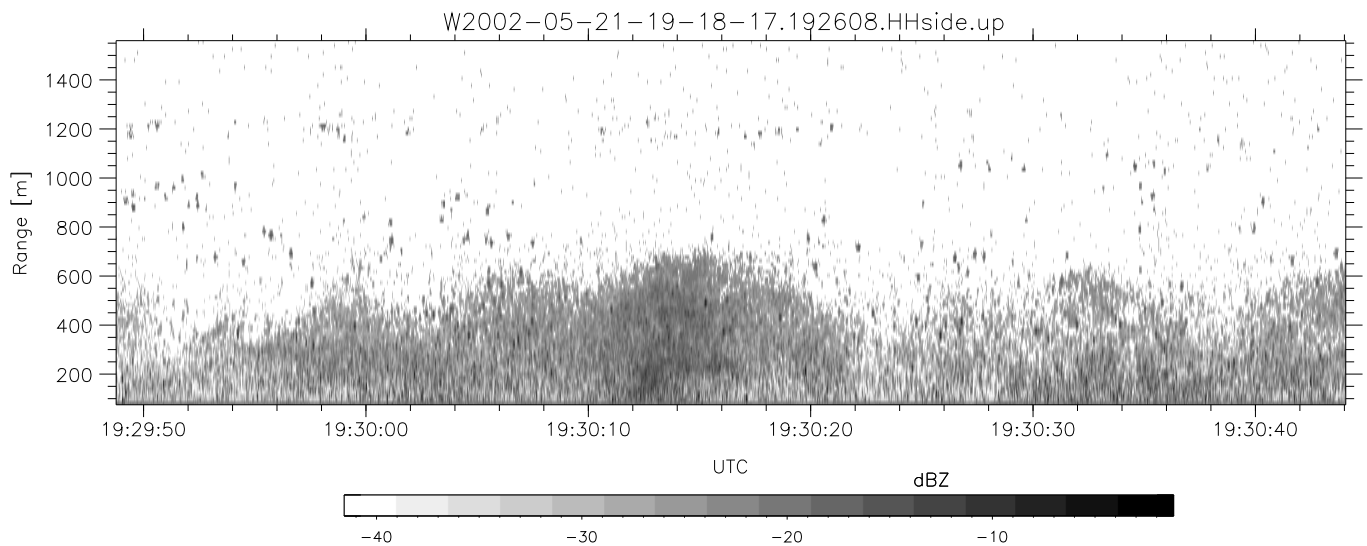
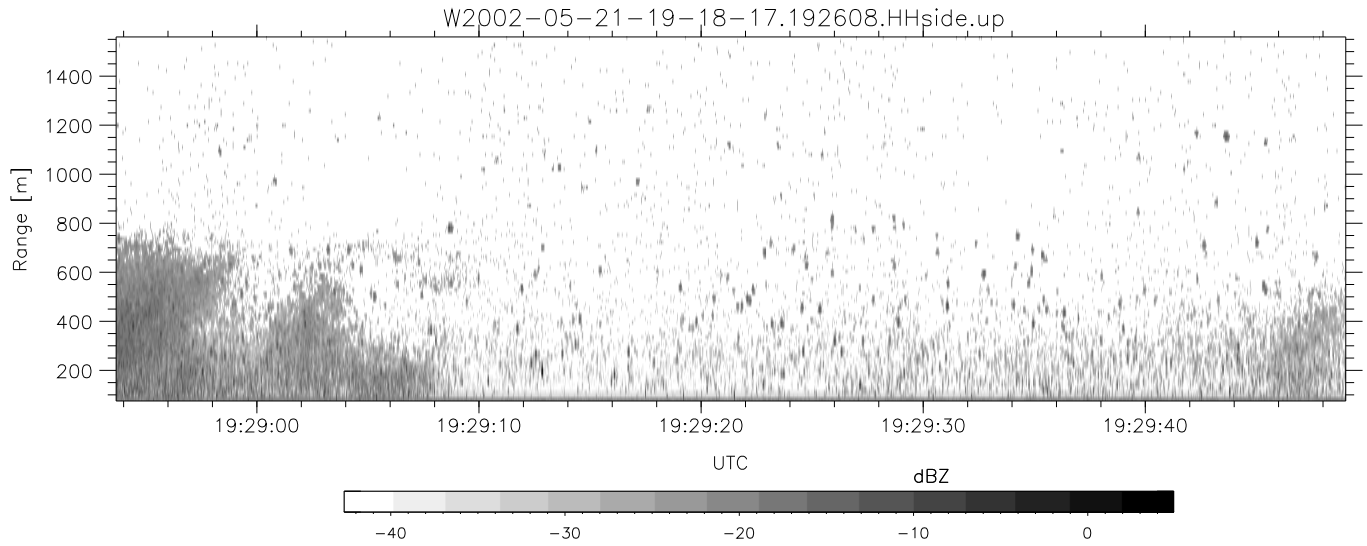


IHOP 2002 (dual-antenna config, modes 1,3,4,7) Data (cal: 49.0,50.0)

W2002-05-21-19-18-17 - PPMAG4
 IRIG:1,UTC: 19:18:06.47 to 20:53:54.62, Dur: 5748s
 TimeLngth: 5748.15s, TimeInt: 30ms (32.7pps)
 TimeCor=-13.0s, DSPDif[ms]: mn=29,mx-min=172
 PPS(min,max,std): 28,36,1.95
 Prof: 112 to 188351, NumProf(t/r): 188239/16065
 ProcTime/Recs: 19:26:08-19:34:11/16065-32129
 MxACQtime: 33ms; DRate: 183.3KB/s; Flags: 0, 0, 0
 Pulse: 275ns, IFfilt: 5.0MHz; ppPol: HH HV VV
 TxPol: HHVV, PRF: 20 10 20 10 kHz
 Range: Delay 75m, Spacing 15m, Gates 100
 Ave. Pulses: 84, Rng/Prof Aspect@90m/s: 5.5

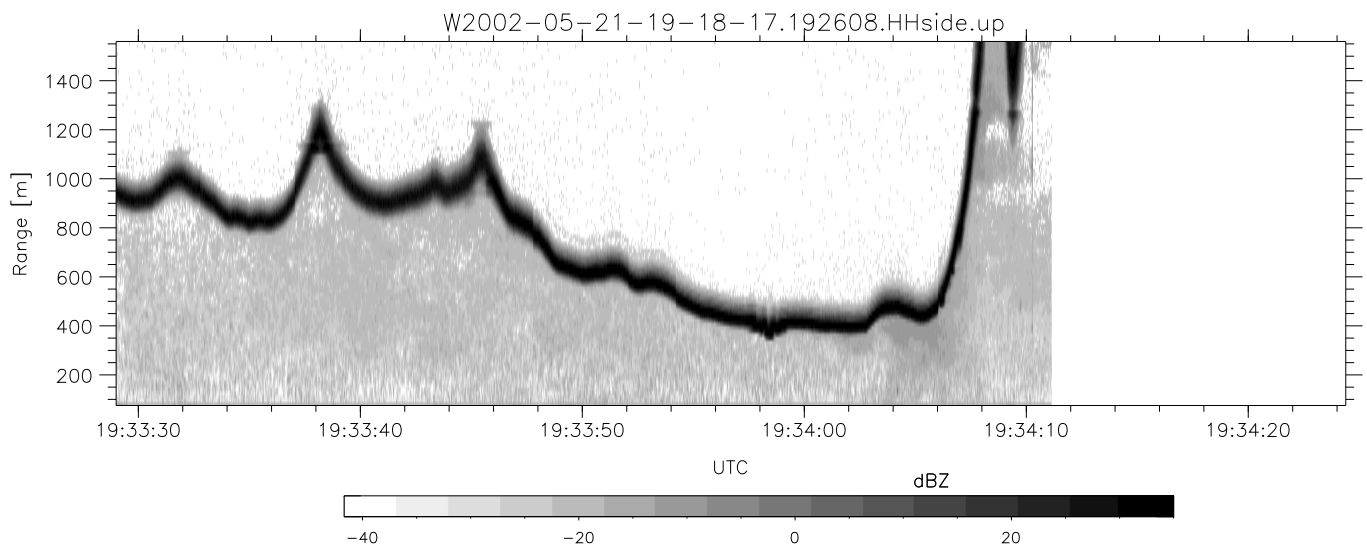
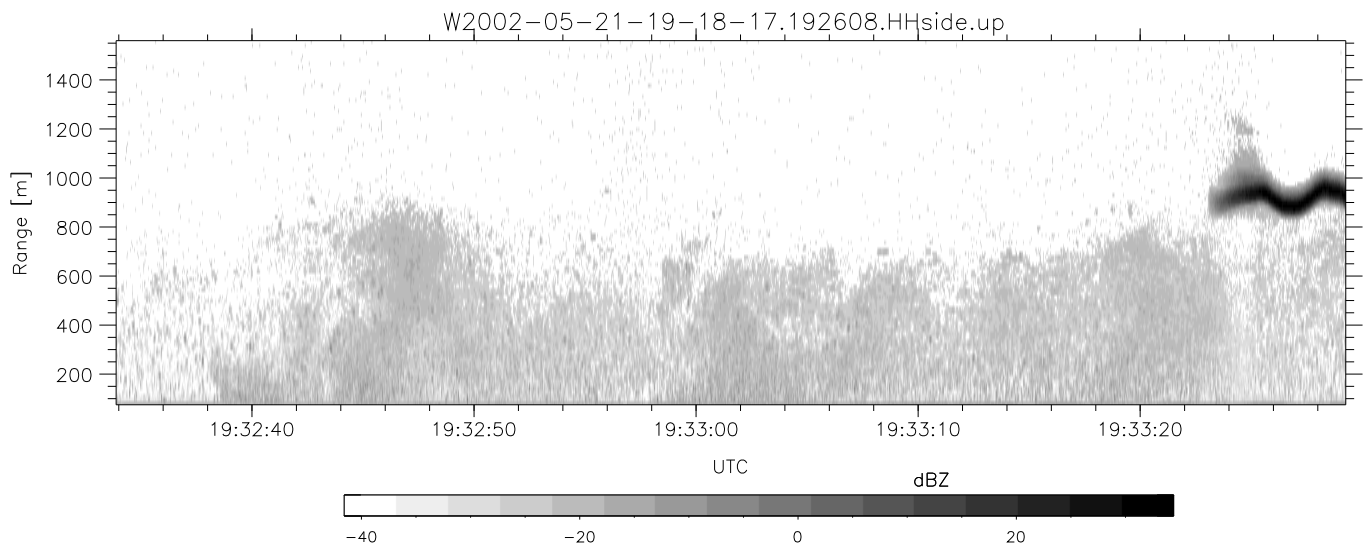
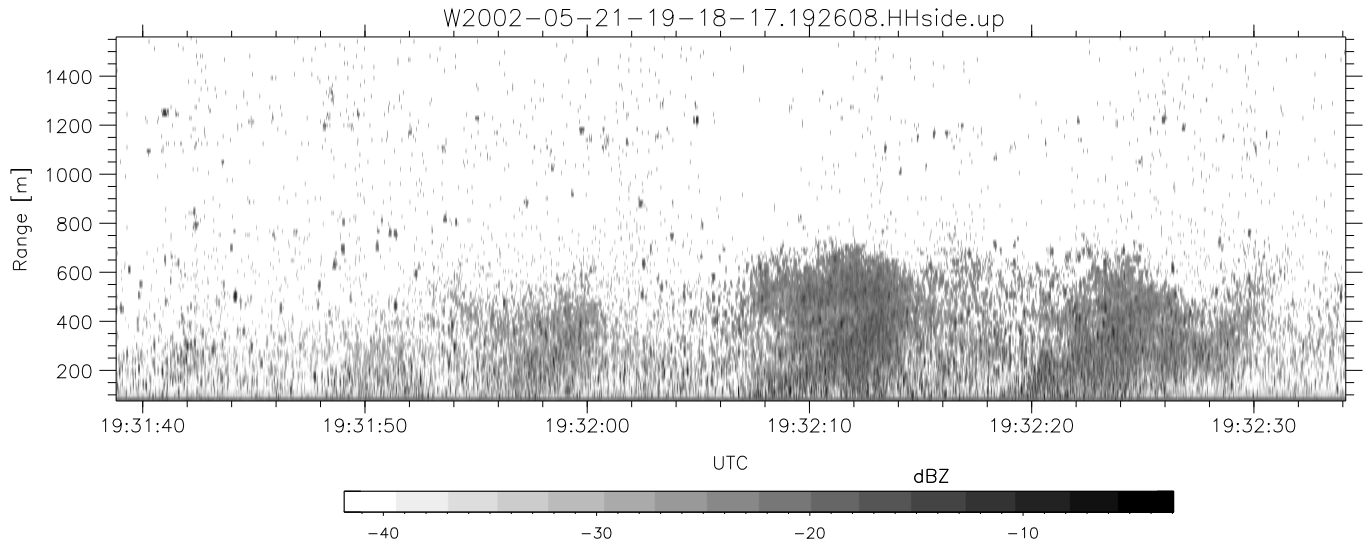
	Min	Max	Mean	Std	Varc%
hhN(dB)	-66.55	-63.34	-64.91	-74.99	9.8
vvN(dB)	-66.33	-63.09	-64.61	-74.71	9.8
hhL(dB)	-21.30	-7.20	-12.84	-16.67	41.4
vvL(dB)	-22.95	-10.86	-13.11	-20.97	16.4
ppN(m/s)	-12.19	12.07	-0.03	4.16	
ppT(m/s)	-96.33	95.33	-0.22	32.85	
hh/vv(dB)	-NaN	90.46	-NaN	75.66	-128
vh/hh(dB)	-NaN	-29.08	-47.51	-39.42	645.
hv/vv(dB)	-NaN	-33.59	-55.49	-44.77	1180
hnjmp(dB)	-2.37	2.70	0.16	-8.54	13.5
vnjmp(dB)	-2.24	2.44	0.16	-8.44	13.8



IHOP 2002 (dual-antenna config, modes 1,3,4,7) Data (cal: 49.0,50.0)

W2002-05-21-19-18-17 - PPMAG4
 IRIG:1,UTC: 19:18:06.47 to 20:53:54.62, Dur: 5748s
 TimeLngth: 5748.15s, TimeInt: 30ms (32.7pps)
 TimeCor=-13.0s, DSPDif[ms]: mn=29,mx-min=172
 PPS(min,max,std): 28,36,1.95
 Prof: 112 to 188351, NumProf(t/r): 188239/16065
 ProcTime/Recs: 19:26:08-19:34:11/16065-32129
 MxACQtime: 33ms; DRate: 183.3KB/s; Flags: 0, 0, 0
 Pulse: 275ns, IFfilt: 5.0MHz; ppPol: HH HV VV
 TxPol: HHVV, PRF: 20 10 20 10 kHz
 Range: Delay 75m, Spacing 15m, Gates 100
 Ave. Pulses: 84, Rng/Prof Aspect@90m/s: 5.5

	Min	Max	Mean	Std	Varc%
hhN(dB)	-66.55	-63.34	-64.91	-74.99	9.8
vvN(dB)	-66.33	-63.09	-64.61	-74.71	9.8
hhL(dB)	-21.30	-7.20	-12.84	-16.67	41.4
vvL(dB)	-22.95	-10.86	-13.11	-20.97	16.4
ppN(m/s)	-12.19	12.07	-0.03	4.16	
ppT(m/s)	-96.33	95.33	-0.22	32.85	
hh/vv(dB)	-NaN	90.46	-NaN	75.66	-128
vh/hh(dB)	-NaN	-29.08	-47.51	-39.42	645.
hv/vv(dB)	-NaN	-33.59	-55.49	-44.77	1180
hnjmp(dB)	-2.37	2.70	0.16	-8.54	13.5
vnjmp(dB)	-2.24	2.44	0.16	-8.44	13.8



IHOP 2002 (dual-antenna config, modes 1,3,4,7) Data (cal: 49.0,50.0)

W2002-05-21-19-18-17 - PPMAG4
 IRIG:1,UTC: 19:18:06.47 to 20:53:54.62, Dur: 5748s
 TimeLngth: 5748.15s, TimeInt: 30ms (32.7pps)
 TimeCor=-13.0s, DSPDif[ms]: mn=29,mx-min=172
 PPS(min,max,std): 28,36,1.95
 Prof: 112 to 188351, NumProf(t/r): 188239/16065
 ProcTime/Recs: 19:26:08-19:34:11/16065-32129
 MxACQtime: 33ms; DRate: 183.3KB/s; Flags: 0, 0, 0
 Pulse: 275ns, IFilt: 5.0MHz; ppPol: HH HV VV
 TxPol: HHVV, PRF: 20 10 20 10 kHz
 Range: Delay 75m, Spacing 15m, Gates 100
 Ave. Pulses: 84, Rng/Prof Aspect@90m/s: 5.5

	Min	Max	Mean	Std	Varc%
hhN(dB)	-66.55	-63.34	-64.91	-74.99	9.8
vvN(dB)	-66.33	-63.09	-64.61	-74.71	9.8
hhL(dB)	-21.30	-7.20	-12.84	-16.67	41.4
vvL(dB)	-22.95	-10.86	-13.11	-20.97	16.4
ppN(m/s)	-12.19	12.07	-0.03	4.16	
ppT(m/s)	-96.33	95.33	-0.22	32.85	
hh/vv(dB)	-NaN	90.46	-NaN	75.66	-128
vh/hh(dB)	-NaN	-29.08	-47.51	-39.42	645.
hv/vv(dB)	-NaN	-33.59	-55.49	-44.77	1180
hnjmp(dB)	-2.37	2.70	0.16	-8.54	13.5
vnjmp(dB)	-2.24	2.44	0.16	-8.44	13.8