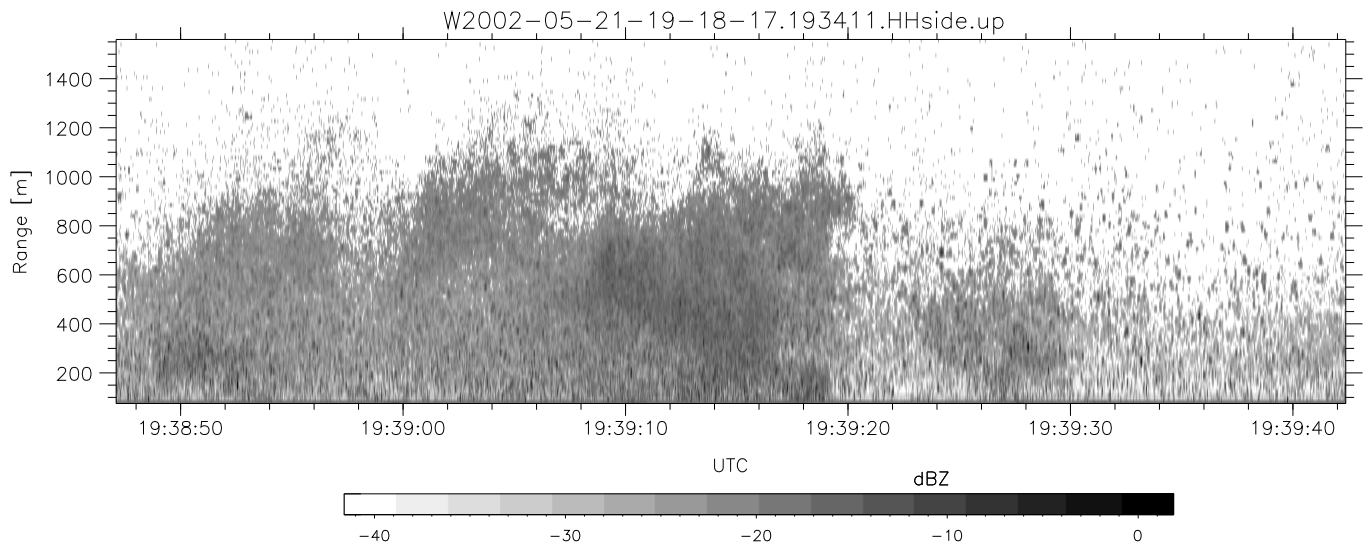
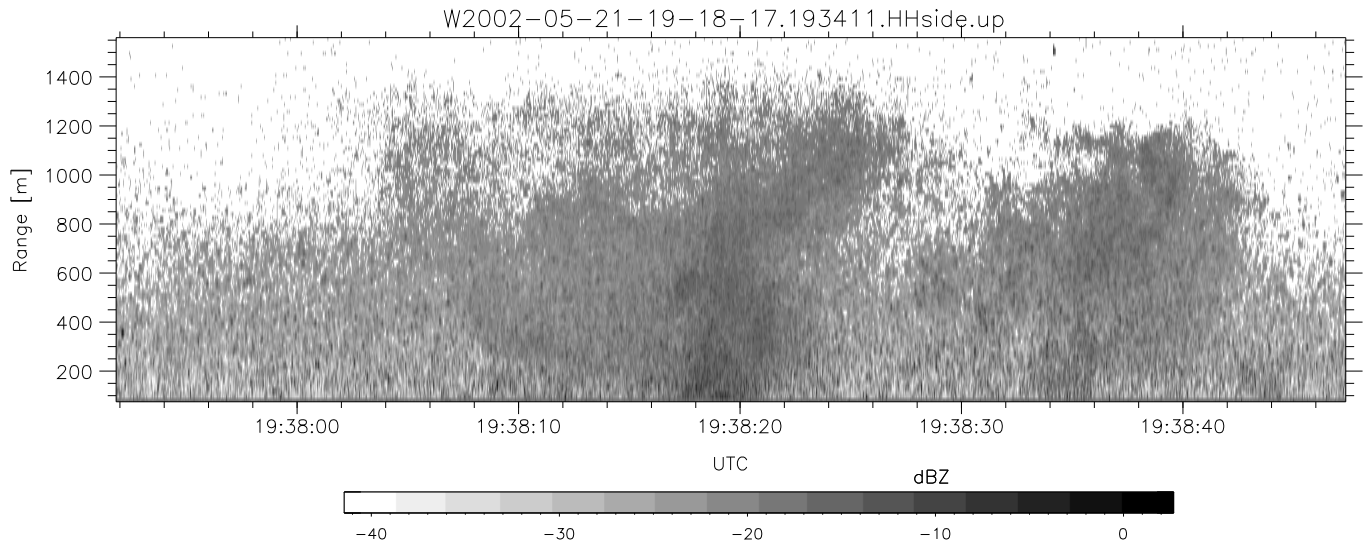
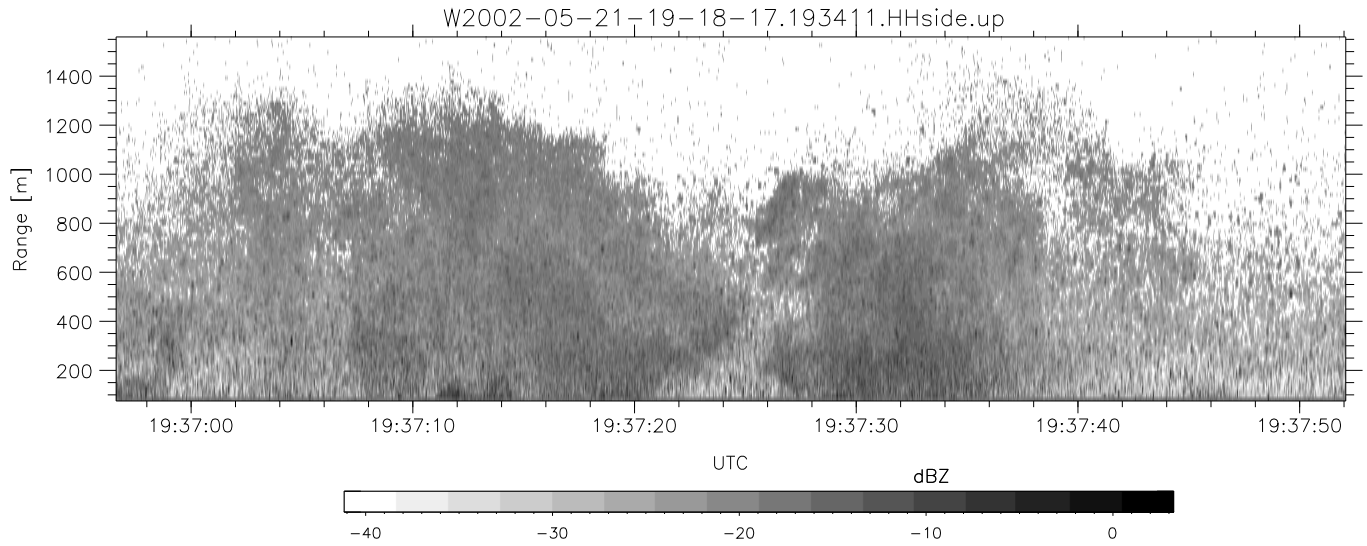


IHOP 2002 (dual-antenna config, modes 1,3,4,7) Data (cal: 49.0,50.0)

W2002-05-21-19-18-17 - PPMAG4
 IRIG:1,UTC: 19:18:06.47 to 20:53:54.62, Dur: 5748s
 TimeLngth: 5748.15s, TimeInt: 30ms (32.7pps)
 TimeCor=-13.0s, DSPDif[ms]: mn=30,mx-min=206
 PPS(min,max,std): 28,36,2.04
 Prof: 112 to 188351, NumProf(t/r): 188239/16065
 ProcTime/Recs: 19:34:11-19:42:14/32130-48194
 MxACQtime: 33ms; DRate: 183.3KB/s; Flags: 0, 0, 0
 Pulse: 275ns, IFfilt: 5.0MHz; ppPol: HH HV VV
 TxPol: HHVV, PRF: 20 10 20 10 kHz
 Range: Delay 75m, Spacing 15m, Gates 100
 Ave. Pulses: 84, Rng/Prof Aspect@90m/s: 5.5

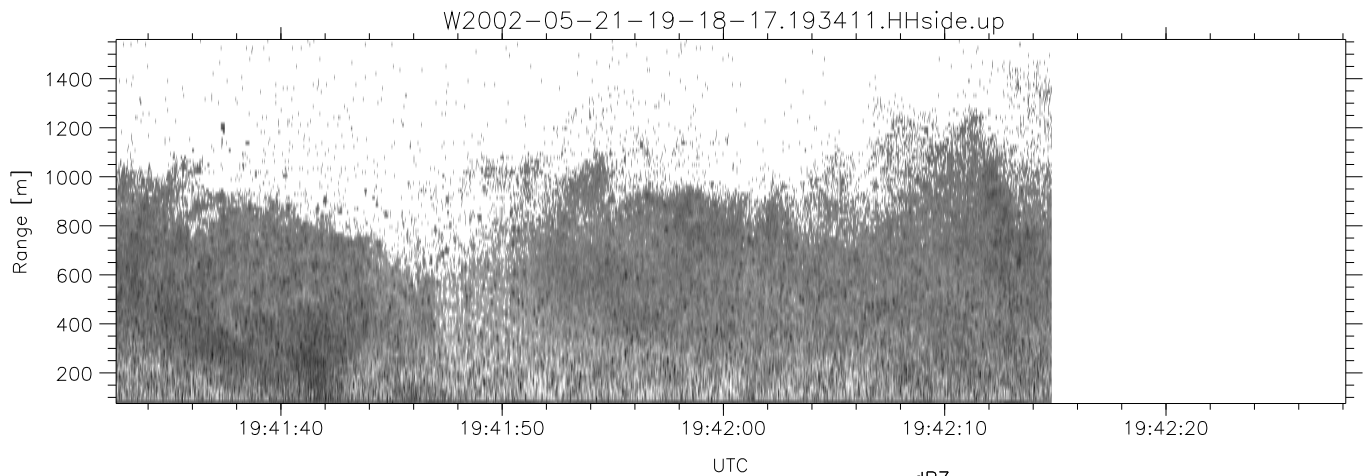
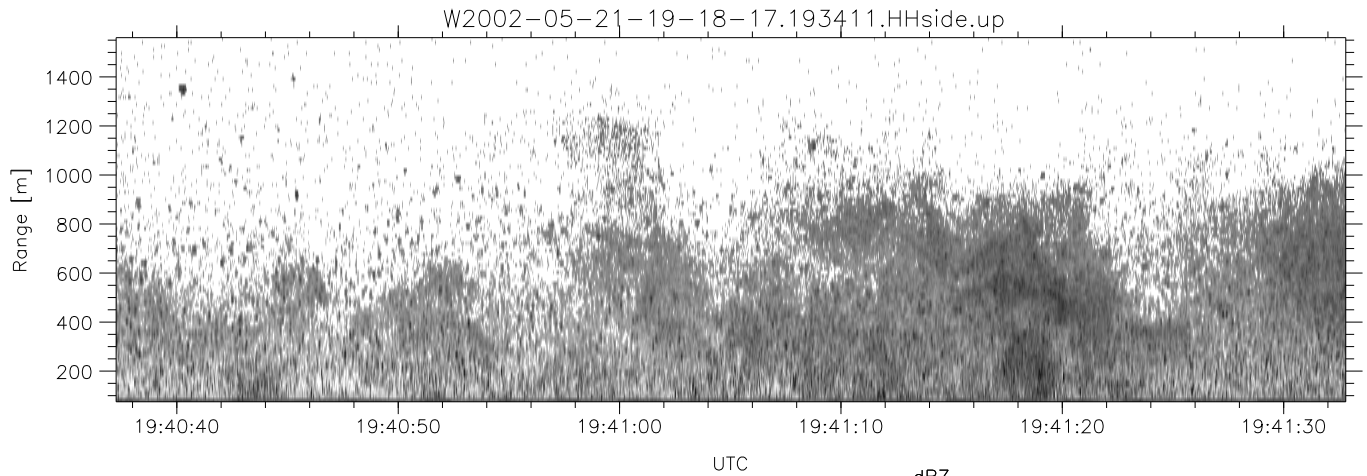
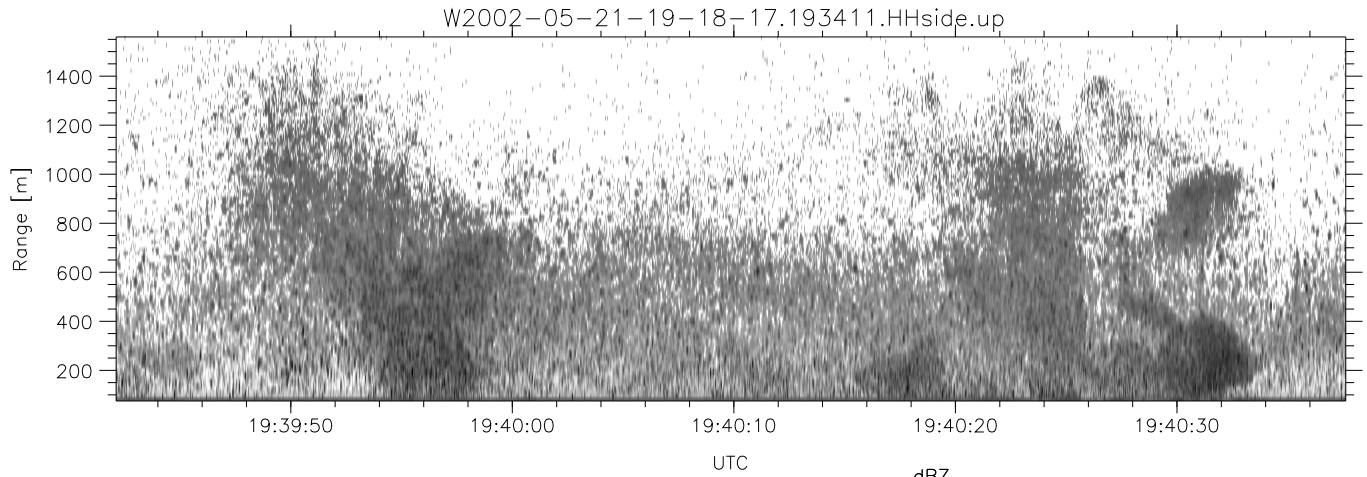
	Min	Max	Mean	Std	Varc%
hhN(dB)	-66.62	-63.27	-64.92	-75.02	9.8
vvN(dB)	-66.48	-63.25	-64.71	-74.81	9.8
hhL(dB)	-19.44	-6.20	-10.47	-15.30	32.9
vvL(dB)	-32.90	-11.27	-15.02	-20.61	27.6
ppN(m/s)	-12.85	12.30	-0.00	4.16	
ppT(m/s)	-101.5	97.20	-0.01	32.83	
hh/vv(dB)	-NaN	59.35	-NaN	47.49	-510
vh/hh(dB)	-NaN	1.50	-16.14	-8.67	559.
hv/vv(dB)	-NaN	-9.58	-32.52	-28.06	278.
hnjmp(dB)	-2.44	2.49	-0.06	-8.72	13.6
vnjmp(dB)	-2.22	2.12	-0.06	-8.65	13.8



IHOP 2002 (dual-antenna config, modes 1,3,4,7) Data (cal: 49.0,50.0)

W2002-05-21-19-18-17 - PPMAG4
 IRIG:1,UTC: 19:18:06.47 to 20:53:54.62, Dur: 5748s
 TimeLngth: 5748.15s, TimeInt: 30ms (32.7pps)
 TimeCor=-13.0s, DSPDif[ms]: mn=30,mx-min=206
 PPS(min,max,std): 28,36,2.04
 Prof: 112 to 188351, NumProf(t/r): 188239/16065
 ProcTime/Recs: 19:34:11-19:42:14/32130-48194
 MxACQtime: 33ms; DRate: 183.3KB/s; Flags: 0, 0, 0
 Pulse: 275ns, IFfilt: 5.0MHz; ppPol: HH HV VV
 TxPol: HHVV, PRF: 20 10 20 10 kHz
 Range: Delay 75m, Spacing 15m, Gates 100
 Ave. Pulses: 84, Rng/Prof Aspect@90m/s: 5.5

	Min	Max	Mean	Std	Varc%
hhN(dB)	-66.62	-63.27	-64.92	-75.02	9.8
vvN(dB)	-66.48	-63.25	-64.71	-74.81	9.8
hhL(dB)	-19.44	-6.20	-10.47	-15.30	32.9
vvL(dB)	-32.90	-11.27	-15.02	-20.61	27.6
ppN(m/s)	-12.85	12.30	-0.00	4.16	
ppT(m/s)	-101.5	97.20	-0.01	32.83	
hh/vv(dB)	-NaN	59.35	-NaN	47.49	-510
vh/hh(dB)	-NaN	1.50	-16.14	-8.67	559.
hv/vv(dB)	-NaN	-9.58	-32.52	-28.06	278.
hnjmp(dB)	-2.44	2.49	-0.06	-8.72	13.6
vnjmp(dB)	-2.22	2.12	-0.06	-8.65	13.8



IHOP 2002 (dual-antenna config, modes 1,3,4,7) Data (cal: 49.0,50.0)

W2002-05-21-19-18-17 - PPMAG4
 IRIG:1,UTC: 19:18:06.47 to 20:53:54.62, Dur: 5748s
 TimeLngth: 5748.15s, TimeInt: 30ms (32.7pps)
 TimeCor=-13.0s, DSPDif[ms]: mn=30,mx-min=206
 PPS(min,max,std): 28,36,2.04
 Prof: 112 to 188351, NumProf(t/r): 188239/16065
 ProcTime/Recs: 19:34:11-19:42:14/32130-48194
 MxACQtime: 33ms; DRate: 183.3KB/s; Flags: 0, 0, 0
 Pulse: 275ns, IFfilt: 5.0MHz; ppPol: HH HV VV
 TxPol: HHVV, PRF: 20 10 20 10 kHz
 Range: Delay 75m, Spacing 15m, Gates 100
 Ave. Pulses: 84, Rng/Prof Aspect@90m/s: 5.5

	Min	Max	Mean	Std	Varc%
hhN(dB)	-66.62	-63.27	-64.92	-75.02	9.8
vvN(dB)	-66.48	-63.25	-64.71	-74.81	9.8
hhL(dB)	-19.44	-6.20	-10.47	-15.30	32.9
vvL(dB)	-32.90	-11.27	-15.02	-20.61	27.6
ppN(m/s)	-12.85	12.30	-0.00	4.16	
ppT(m/s)	-101.5	97.20	-0.01	32.83	
hh/vv(dB)	-NaN	59.35	-NaN	47.49	-510
vh/hh(dB)	-NaN	1.50	-16.14	-8.67	559.
hv/vv(dB)	-NaN	-9.58	-32.52	-28.06	278.
hnjmp(dB)	-2.44	2.49	-0.06	-8.72	13.6
vnjmp(dB)	-2.22	2.12	-0.06	-8.65	13.8