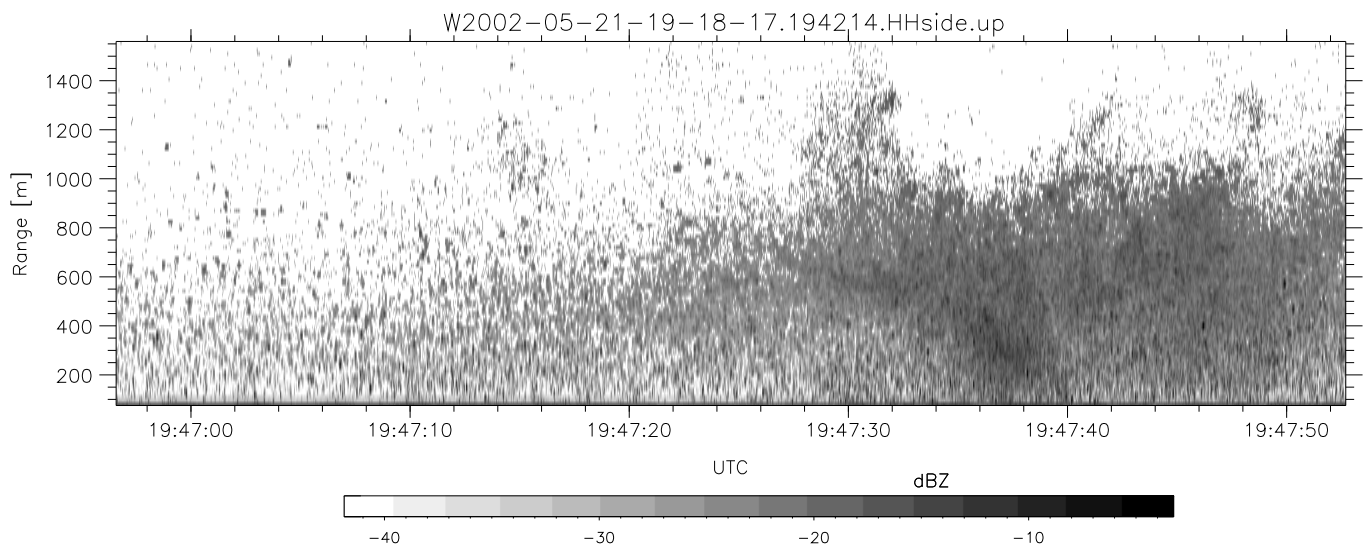
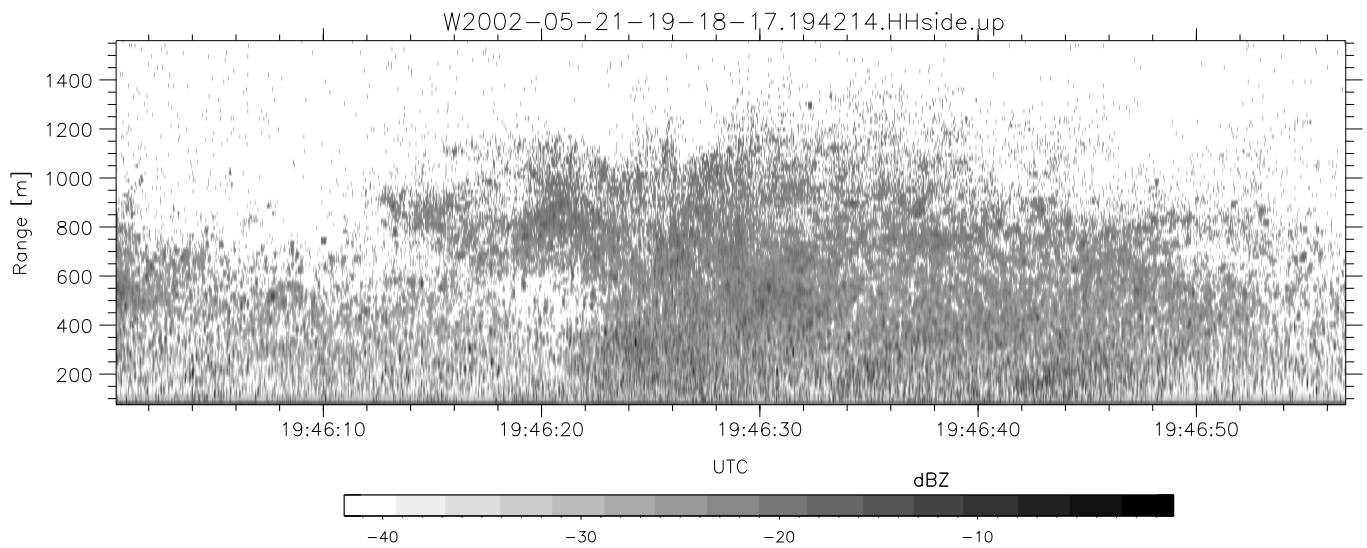
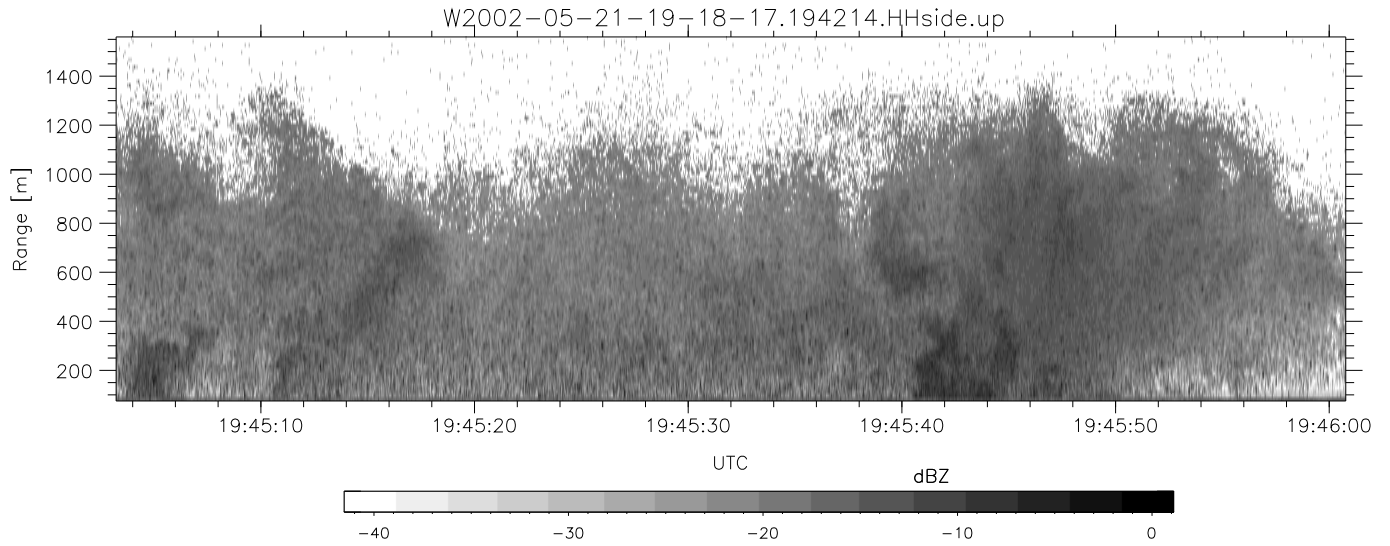


IHOP 2002 (dual-antenna config, modes 1,3,4,7) Data (cal: 49.0,50.0)

W2002-05-21-19-18-17 - PPMAG4  
 IRIG:1,UTC: 19:18:06.47 to 20:53:54.62, Dur: 5748s  
 TimeLngth: 5748.15s, TimeInt: 30ms (32.7pps)  
 TimeCor=-13.0s, DSPDif[ms]: mn=30,mx-min=162  
 PPS(min,max,std): 21,36,2.05  
 Prof: 112 to 188351, NumProf(t/r): 188239/16065  
 ProcTime/Recs: 19:42:14-19:50:25/48195-64259  
 MxACQtime: 33ms; DRate: 183.3KB/s; Flags: 0, 0, 0  
 Pulse: 275ns, IFfilt: 5.0MHz; ppPol: HH HV VV  
 TxPol: HHVV, PRF: 20 10 20 10 kHz  
 Range: Delay 75m, Spacing 15m, Gates 100  
 Ave. Pulses: 84, Rng/Prof Aspect@90m/s: 5.5

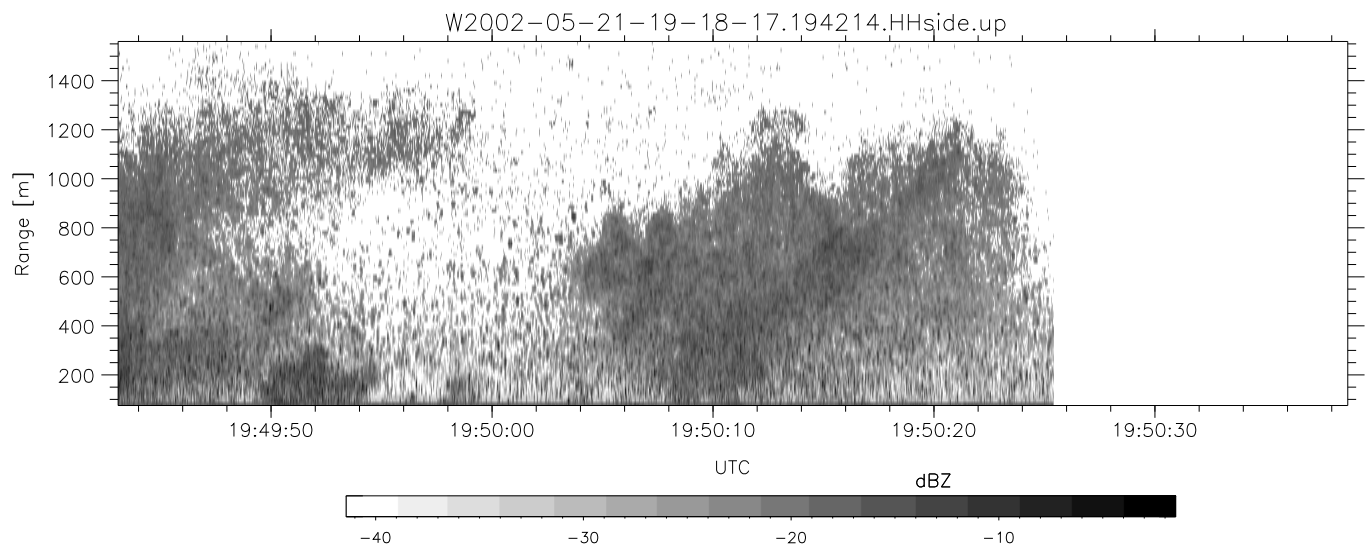
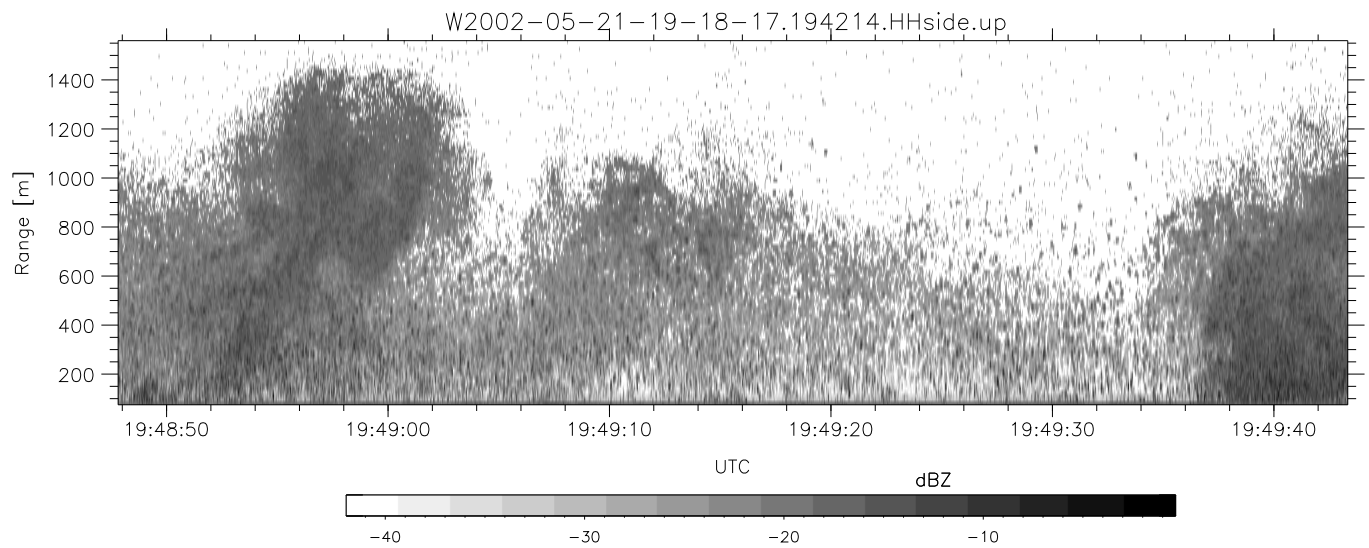
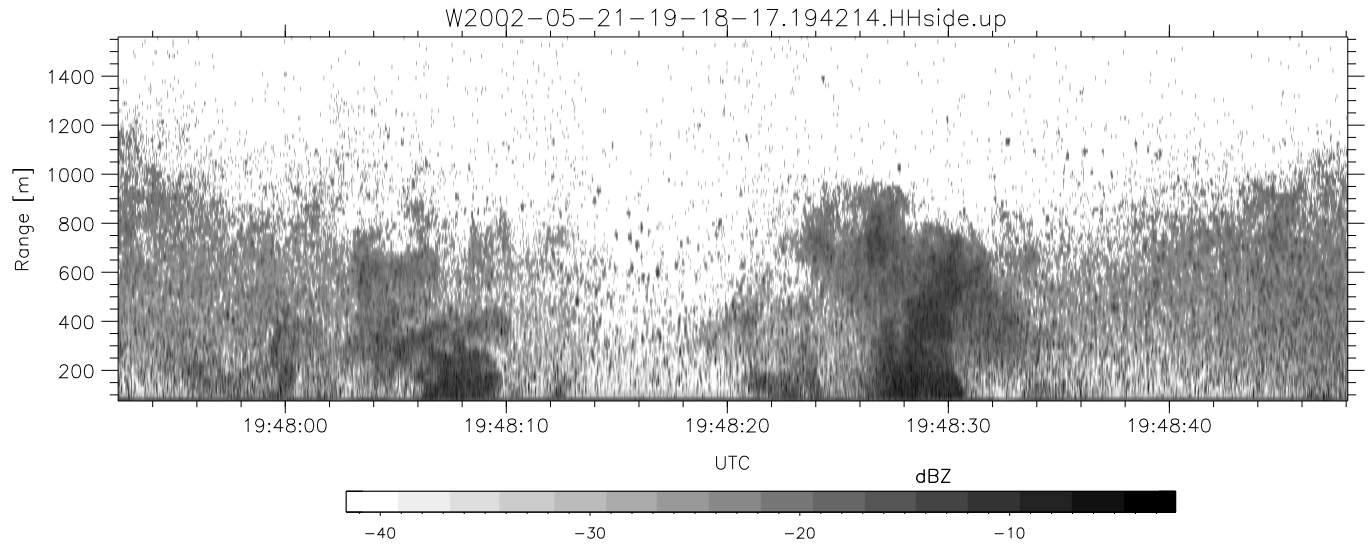
	Min	Max	Mean	Std	Varc%
hhN(dB)	-66.89	-63.43	-64.95	-75.09	9.7
vvN(dB)	-66.51	-63.20	-64.73	-74.81	9.8
hhL(dB)	-18.23	-6.04	-9.74	-14.33	34.7
vvL(dB)	-31.05	-12.37	-14.98	-20.92	25.5
ppN(m/s)	-12.52	12.45	-0.07	4.16	
ppT(m/s)	-98.93	98.38	-0.52	32.87	
hh/vv(dB)	-NaN	64.95	20.49	42.27	1505
vh/hh(dB)	-NaN	7.19	-13.92	-7.17	473.
hv/vv(dB)	-NaN	-16.60	-35.85	-34.94	123.
hh_jmp(dB)	-2.47	2.52	0.13	-8.47	13.8
vv_jmp(dB)	-1.98	2.29	0.15	-8.43	13.9



IHOP 2002 (dual-antenna config, modes 1,3,4,7) Data (cal: 49.0,50.0)

W2002-05-21-19-18-17 - PPMAG4  
 IRIG:1,UTC: 19:18:06.47 to 20:53:54.62, Dur: 5748s  
 TimeLngth: 5748.15s, TimeInt: 30ms (32.7pps)  
 TimeCor=-13.0s, DSPDif[ms]: mn=30,mx-min=162  
 PPS(min,max,std): 21,36,2.05  
 Prof: 112 to 188351, NumProf(t/r): 188239/16065  
 ProcTime/Recs: 19:42:14-19:50:25/48195-64259  
 MxACQtime: 33ms; DRate: 183.3KB/s; Flags: 0, 0, 0  
 Pulse: 275ns, IFilt: 5.0MHz; ppPol: HH HV VV  
 TxPol: HHVV, PRF: 20 10 20 10 kHz  
 Range: Delay 75m, Spacing 15m, Gates 100  
 Ave. Pulses: 84, Rng/Prof Aspect@90m/s: 5.5

	Min	Max	Mean	Std	Varc%
hhN(dB)	-66.89	-63.43	-64.95	-75.09	9.7
vvN(dB)	-66.51	-63.20	-64.73	-74.81	9.8
hhL(dB)	-18.23	-6.04	-9.74	-14.33	34.7
vvL(dB)	-31.05	-12.37	-14.98	-20.92	25.5
ppN(m/s)	-12.52	12.45	-0.07	4.16	
ppT(m/s)	-98.93	98.38	-0.52	32.87	
hh/vv(dB)	-NaN	64.95	20.49	42.27	1505
vh/hh(dB)	-NaN	7.19	-13.92	-7.17	473.
hv/vv(dB)	-NaN	-16.60	-35.85	-34.94	123.
hnjmp(dB)	-2.47	2.52	0.13	-8.47	13.8
vnjmp(dB)	-1.98	2.29	0.15	-8.43	13.9



IHOP 2002 (dual-antenna config, modes 1,3,4,7) Data (cal: 49.0,50.0)

W2002-05-21-19-18-17 - PPMAG4  
 IRIG:1,UTC: 19:18:06.47 to 20:53:54.62, Dur: 5748s  
 TimeLngth: 5748.15s, TimeInt: 30ms (32.7pps)  
 TimeCor=-13.0s, DSPDif[ms]: mn=30,mx-min=162  
 PPS(min,max,std): 21,36,2.05  
 Prof: 112 to 188351, NumProf(t/r): 188239/16065  
 ProcTime/Recs: 19:42:14-19:50:25/48195-64259  
 MxACQtime: 33ms; DRate: 183.3KB/s; Flags: 0, 0, 0  
 Pulse: 275ns, IFfilt: 5.0MHz; ppPol: HH HV VV  
 TxPol: HHVV, PRF: 20 10 20 10 kHz  
 Range: Delay 75m, Spacing 15m, Gates 100  
 Ave. Pulses: 84, Rng/Prof Aspect@90m/s: 5.5

	Min	Max	Mean	Std	Varc%
hhN(dB)	-66.89	-63.43	-64.95	-75.09	9.7
vvN(dB)	-66.51	-63.20	-64.73	-74.81	9.8
hhL(dB)	-18.23	-6.04	-9.74	-14.33	34.7
vvL(dB)	-31.05	-12.37	-14.98	-20.92	25.5
ppN(m/s)	-12.52	12.45	-0.07	4.16	
ppT(m/s)	-98.93	98.38	-0.52	32.87	
hh/vv(dB)	-NaN	64.95	20.49	42.27	1505
vh/hh(dB)	-NaN	7.19	-13.92	-7.17	473.
hv/vv(dB)	-NaN	-16.60	-35.85	-34.94	123.
hnjmp(dB)	-2.47	2.52	0.13	-8.47	13.8
vnjmp(dB)	-1.98	2.29	0.15	-8.43	13.9