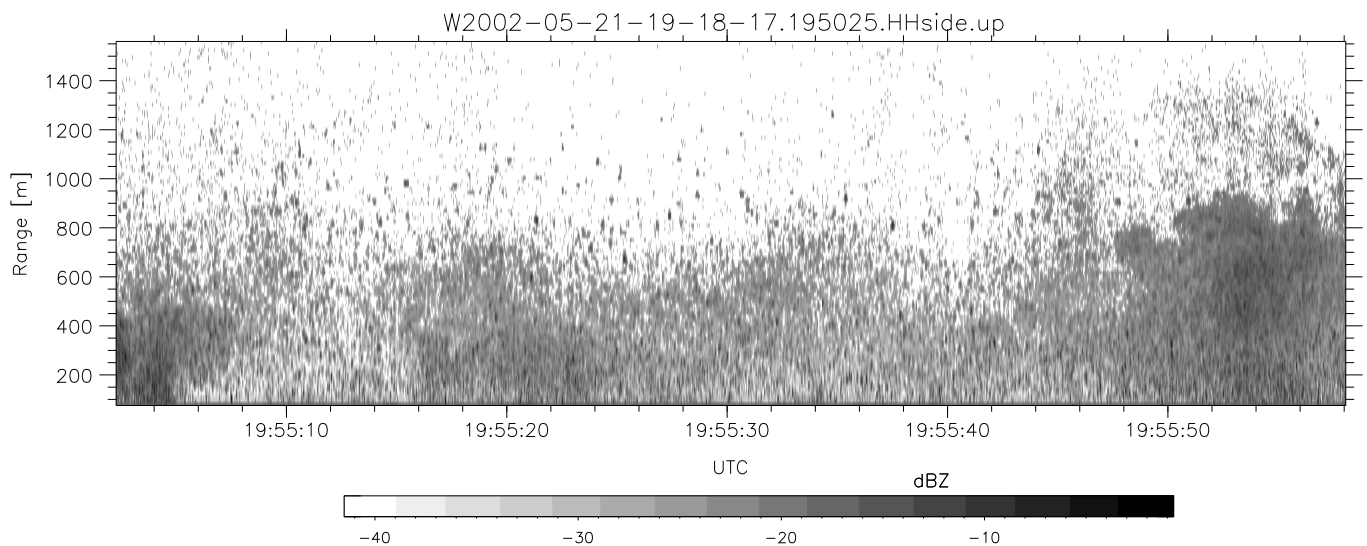
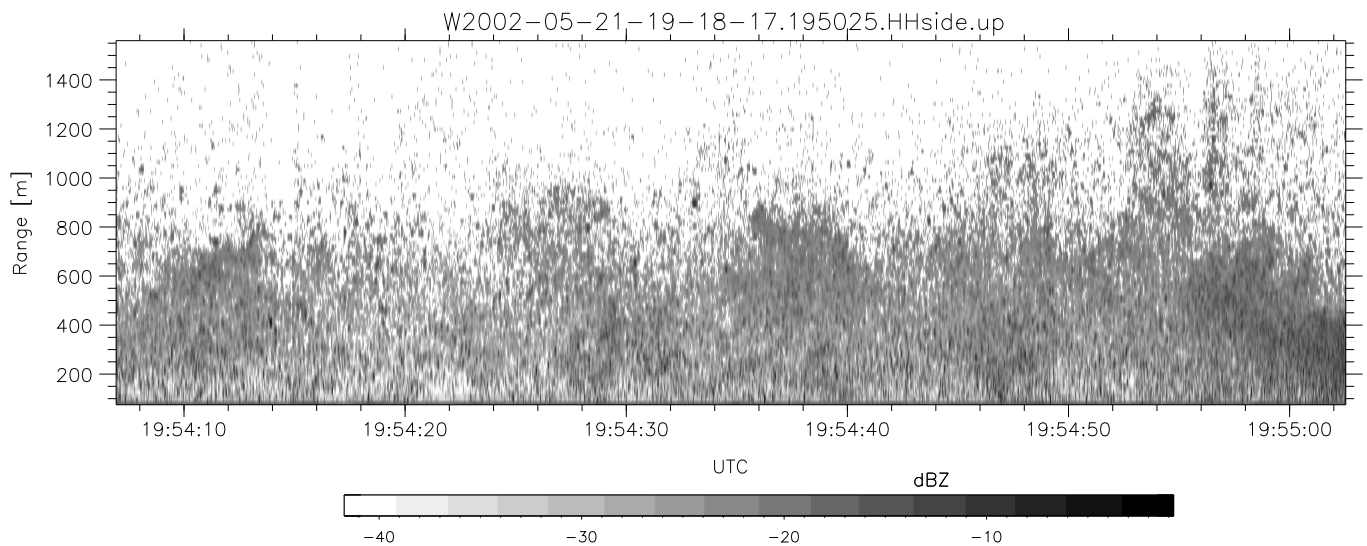
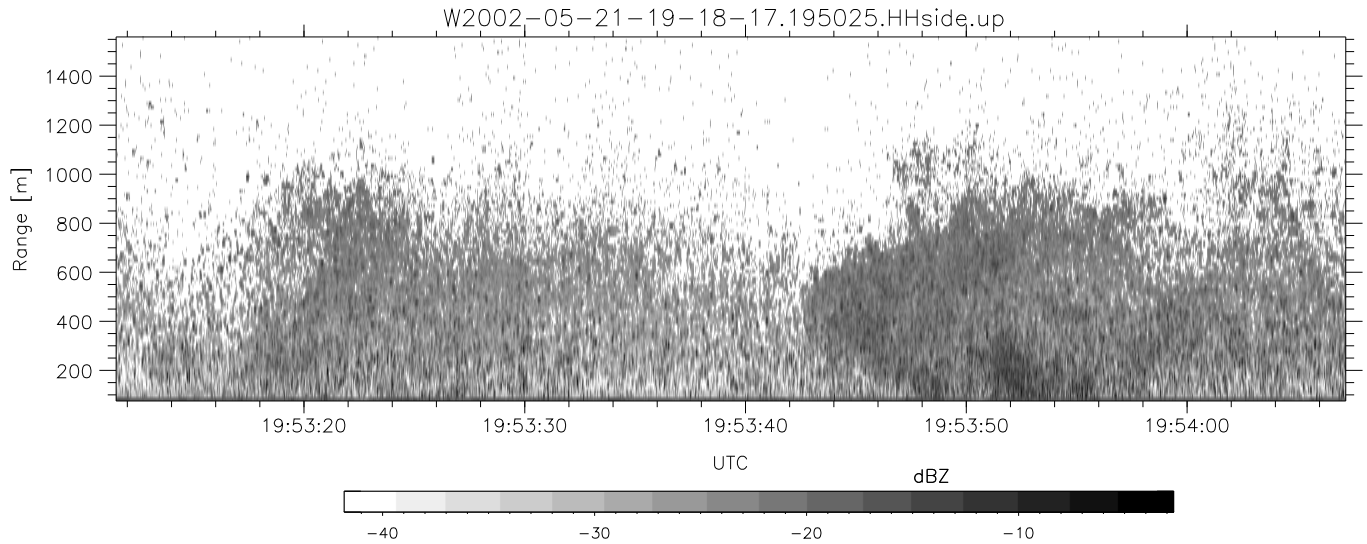


IHOP 2002 (dual-antenna config, modes 1,3,4,7) Data (cal: 49.0,50.0)

W2002-05-21-19-18-17 - PPMAG4
 IRIG:1,UTC: 19:18:06.47 to 20:53:54.62, Dur: 5748s
 TimeLngth: 5748.15s, TimeInt: 30ms (32.7pps)
 TimeCor=-13.0s, DSPDif[ms]: mn=30,mx-min=166
 PPS(min,max,std): 29,36,2.05
 Prof: 112 to 188351, NumProf(t/r): 188239/16065
 ProcTime/Recs: 19:50:25-19:58:30/64260-80324
 MxACQtime: 33ms; DRate: 183.3KB/s; Flags: 0, 0, 0
 Pulse: 275ns, IFilt: 5.0MHz; ppPol: HH HV VV
 TxPol: HHVV, PRF: 20 10 20 10 kHz
 Range: Delay 75m, Spacing 15m, Gates 100
 Ave. Pulses: 84, Rng/Prof Aspect@90m/s: 5.5

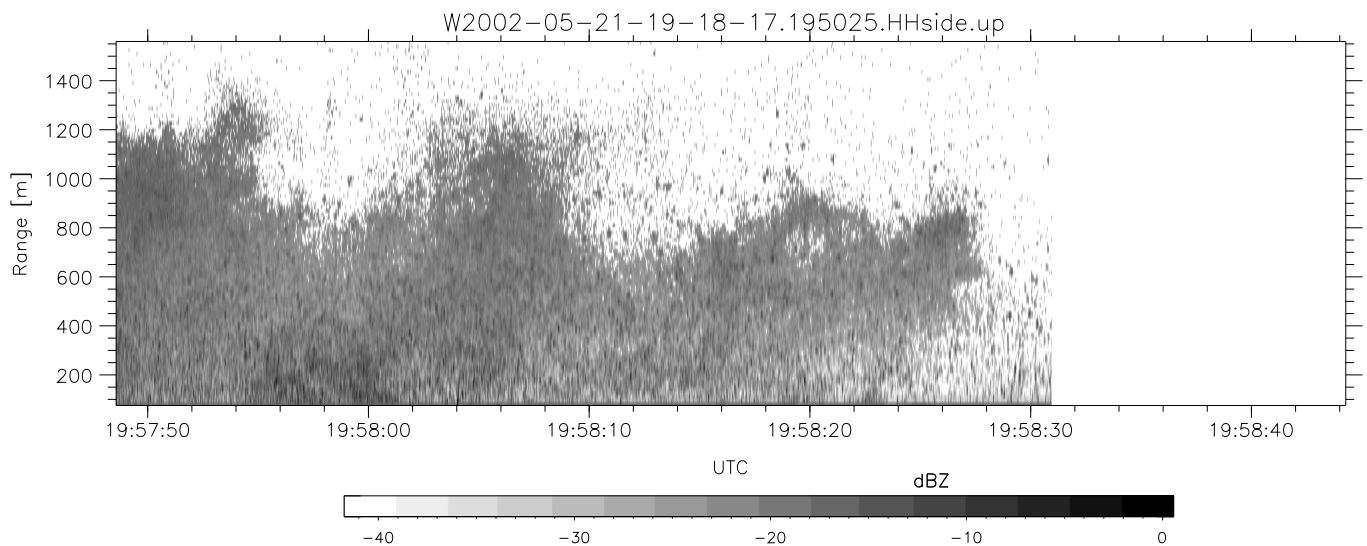
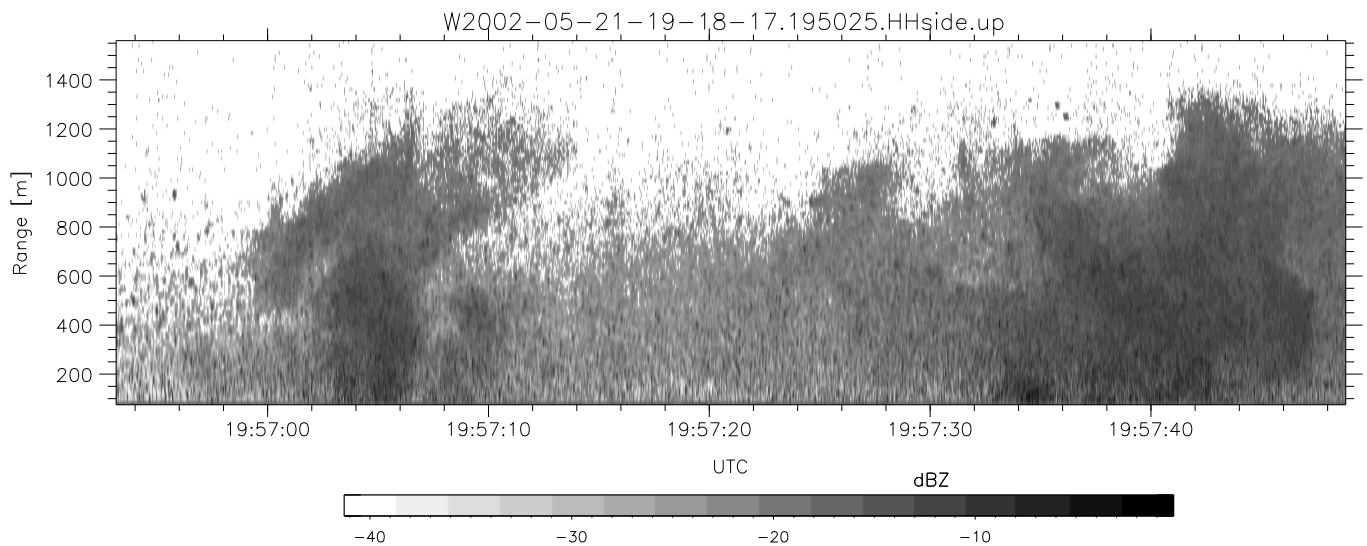
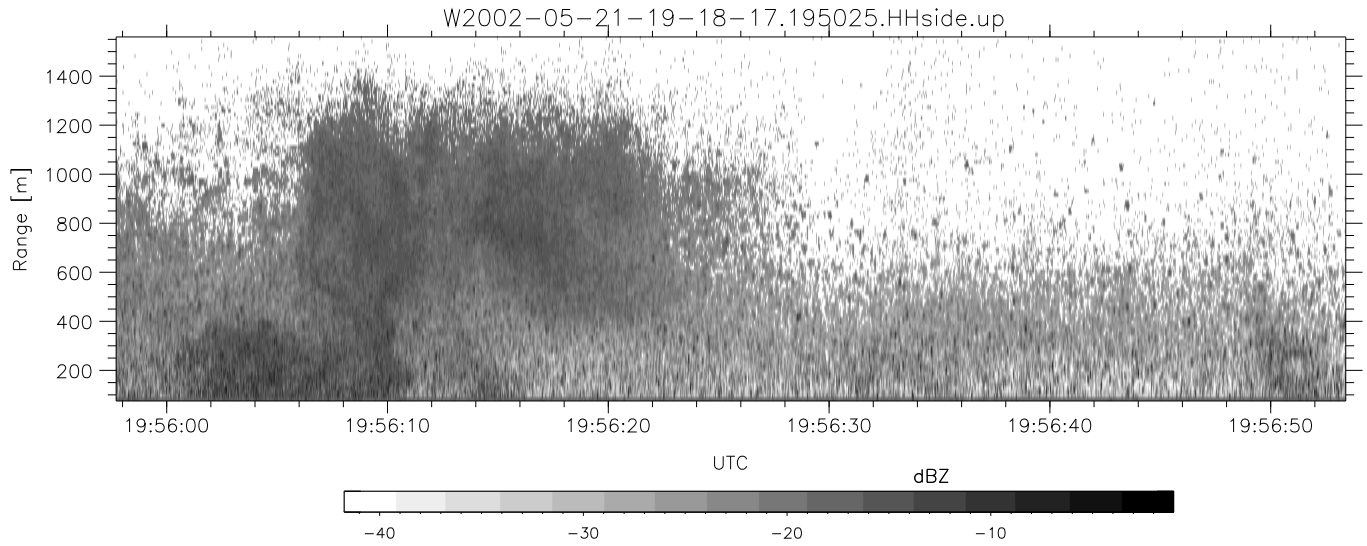
	Min	Max	Mean	Std	Varc%
hhN(dB)	-66.63	-63.28	-64.95	-75.04	9.8
vvN(dB)	-66.61	-63.20	-64.76	-74.82	9.9
hhL(dB)	-18.22	-6.26	-10.19	-15.34	30.5
vvL(dB)	-34.83	-12.37	-15.16	-20.53	29.0
ppN(m/s)	-12.84	12.37	0.11	4.21	
ppT(m/s)	-101.4	97.70	0.85	33.29	
hh/vv(dB)	-NaN	62.80	19.61	37.54	6207
vh/hh(dB)	-NaN	7.98	-18.65	-7.52	1295
hv/vv(dB)	-NaN	-6.20	-32.95	-26.19	473.
hnjmp(dB)	-2.49	2.09	-0.07	-8.78	13.5
vnjmp(dB)	-2.36	2.86	-0.07	-8.64	13.9



IHOP 2002 (dual-antenna config, modes 1,3,4,7) Data (cal: 49.0,50.0)

W2002-05-21-19-18-17 - PPMAG4
 IRIG:1,UTC: 19:18:06.47 to 20:53:54.62, Dur: 5748s
 TimeLngth: 5748.15s, TimeInt: 30ms (32.7pps)
 TimeCor=-13.0s, DSPDif[ms]: mn=30,mx-min=166
 PPS(min,max,std): 29,36,2.05
 Prof: 112 to 188351, NumProf(t/r): 188239/16065
 ProcTime/Recs: 19:50:25-19:58:30/64260-80324
 MxACQtime: 33ms; DRate: 183.3KB/s; Flags: 0, 0, 0
 Pulse: 275ns, IFfilt: 5.0MHz; ppPol: HH HV VV
 TxPol: HHVV, PRF: 20 10 20 10 kHz
 Range: Delay 75m, Spacing 15m, Gates 100
 Ave. Pulses: 84, Rng/Prof Aspect@90m/s: 5.5

	Min	Max	Mean	Std	Varc%
hhN (dB)	-66.63	-63.28	-64.95	-75.04	9.8
vvN (dB)	-66.61	-63.20	-64.76	-74.82	9.9
hhL (dB)	-18.22	-6.26	-10.19	-15.34	30.5
vvL (dB)	-34.83	-12.37	-15.16	-20.53	29.0
ppN (m/s)	-12.84	12.37	0.11	4.21	
ppT (m/s)	-101.4	97.70	0.85	33.29	
hh/vv (dB)	-NaN	62.80	19.61	37.54	6207
vh/hh (dB)	-NaN	7.98	-18.65	-7.52	1295
hv/vv (dB)	-NaN	-6.20	-32.95	-26.19	473.
hn_jmp (dB)	-2.49	2.09	-0.07	-8.78	13.5
vn_jmp (dB)	-2.36	2.86	-0.07	-8.64	13.9



IHOP 2002 (dual-antenna config, modes 1,3,4,7) Data (cal: 49.0,50.0)

W2002-05-21-19-18-17 - PPMAG4
 IRIG:1,UTC: 19:18:06.47 to 20:53:54.62, Dur: 5748s
 TimeLngth: 5748.15s, TimeInt: 30ms (32.7pps)
 TimeCor=-13.0s, DSPDif[ms]: mn=30,mx-min=166
 PPS(min,max,std): 29,36,2.05
 Prof: 112 to 188351, NumProf(t/r): 188239/16065
 ProcTime/Recs: 19:50:25-19:58:30/64260-80324
 MxACQtime: 33ms; DRate: 183.3KB/s; Flags: 0, 0, 0
 Pulse: 275ns, IFfilt: 5.0MHz; ppPol: HH HV VV
 TxPol: HHVV, PRF: 20 10 20 10 kHz
 Range: Delay 75m, Spacing 15m, Gates 100
 Ave. Pulses: 84, Rng/Prof Aspect@90m/s: 5.5

	Min	Max	Mean	Std	Varc%
hhN (dB)	-66.63	-63.28	-64.95	-75.04	9.8
vvN (dB)	-66.61	-63.20	-64.76	-74.82	9.9
hhL (dB)	-18.22	-6.26	-10.19	-15.34	30.5
vvL (dB)	-34.83	-12.37	-15.16	-20.53	29.0
ppN (m/s)	-12.84	12.37	0.11	4.21	
ppT (m/s)	-101.4	97.70	0.85	33.29	
hh/vv (dB)	-NaN	62.80	19.61	37.54	6207
vh/hh (dB)	-NaN	7.98	-18.65	-7.52	1295
hv/vv (dB)	-NaN	-6.20	-32.95	-26.19	473.
hn_jmp (dB)	-2.49	2.09	-0.07	-8.78	13.5
vn_jmp (dB)	-2.36	2.86	-0.07	-8.64	13.9