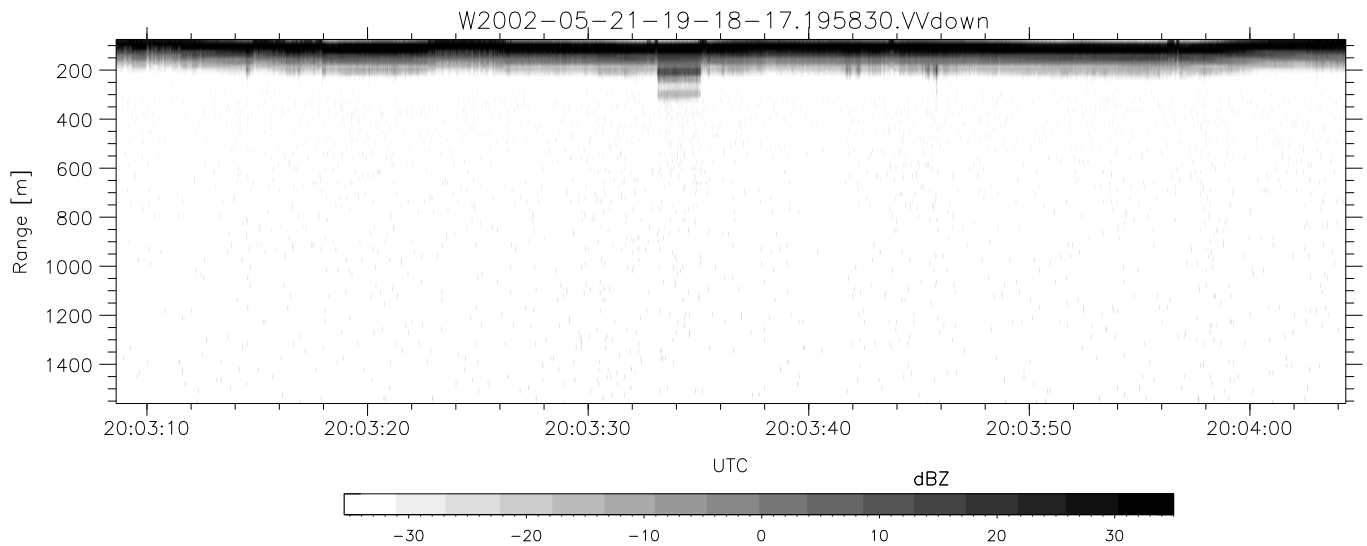
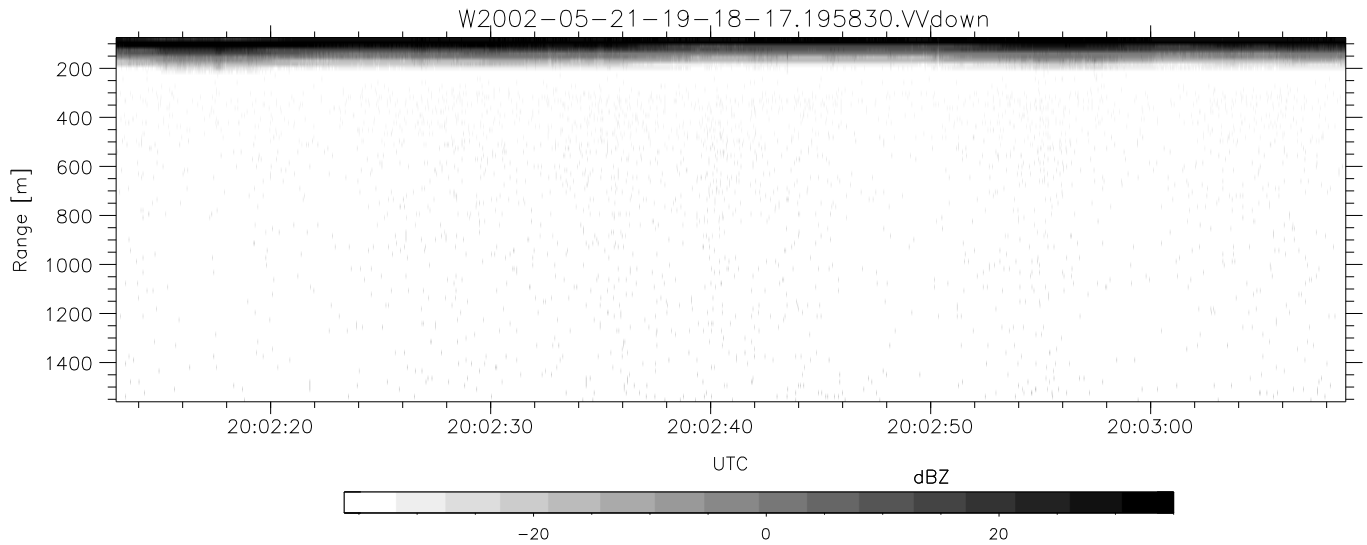
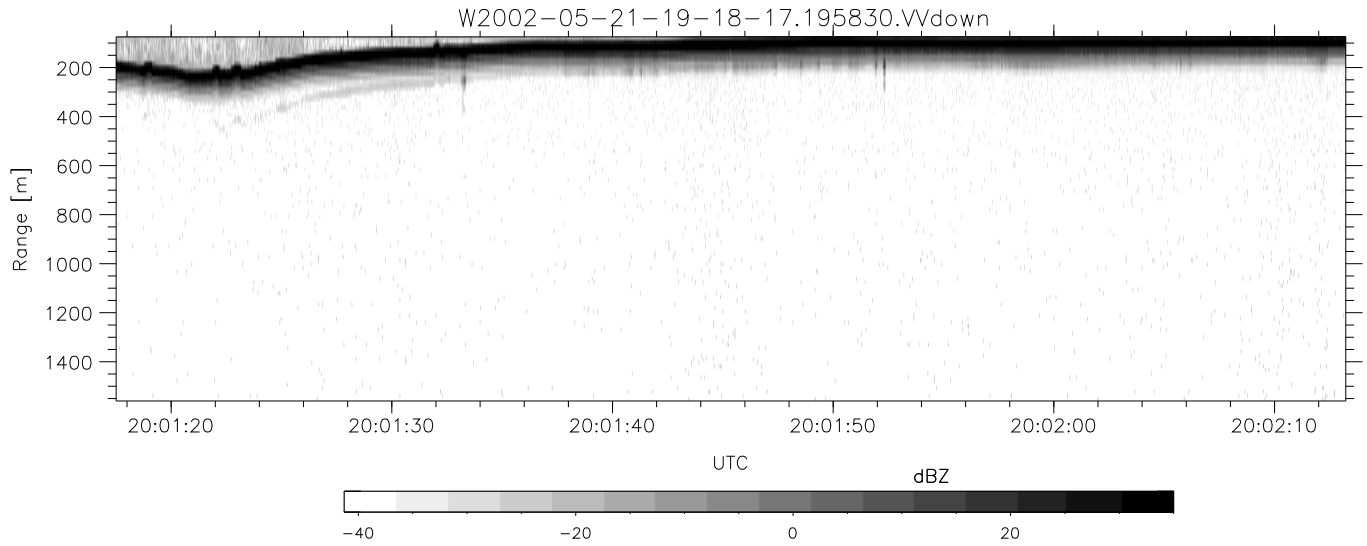


IHOP 2002 (dual-antenna config, modes 1,3,4,7) Data (cal: 49.0,50.0)

W2002-05-21-19-18-17 - PPMAG4
 IRIG:1,UTC: 19:18:06.47 to 20:53:54.62, Dur: 5748s
 TimeLngth: 5748.15s, TimeInt: 30ms (32.7pps)
 TimeCor=-13.0s, DSPDif[ms]: mn=30,mx-min=220
 PPS(min,max,std): 28,36,2.10
 Prof: 112 to 188351, NumProf(t/r): 188239/16065
 ProcTime/Recs: 19:58:30-20:06:37/80325-96389
 MxACQtime: 33ms; DRate: 183.3KB/s; Flags: 0, 0, 0
 Pulse: 275ns, IFfilt: 5.0MHz; ppPol: HH HV VV
 TxPol: HHVV, PRF: 20 10 20 10 kHz
 Range: Delay 75m, Spacing 15m, Gates 100
 Ave. Pulses: 84, Rng/Prof Aspect@90m/s: 5.5

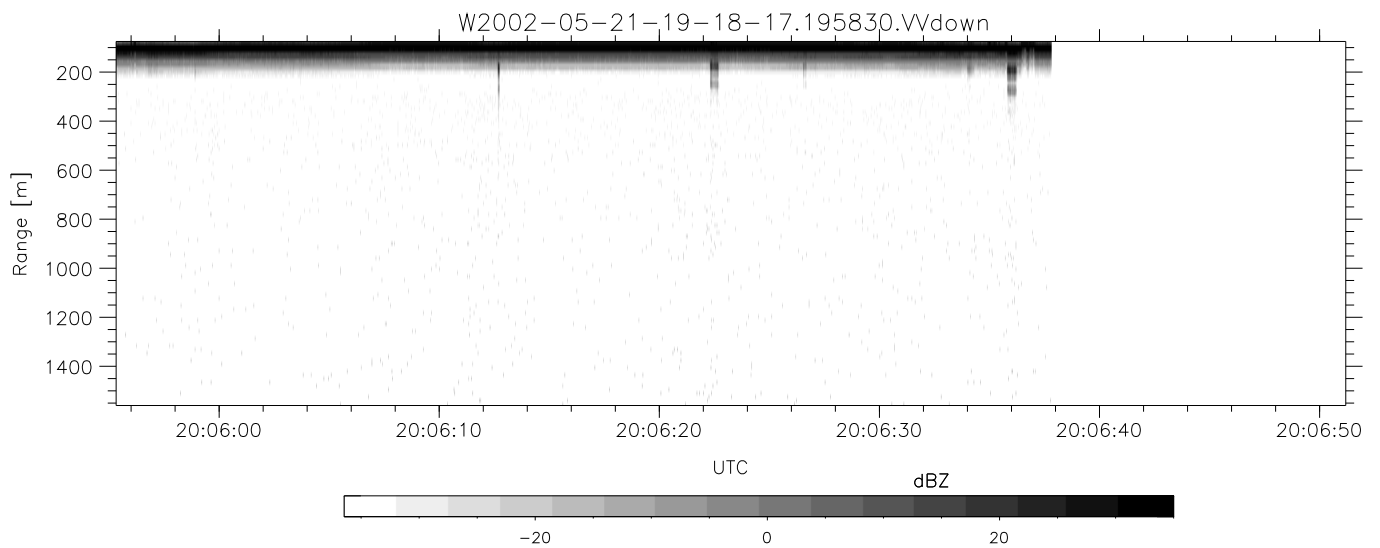
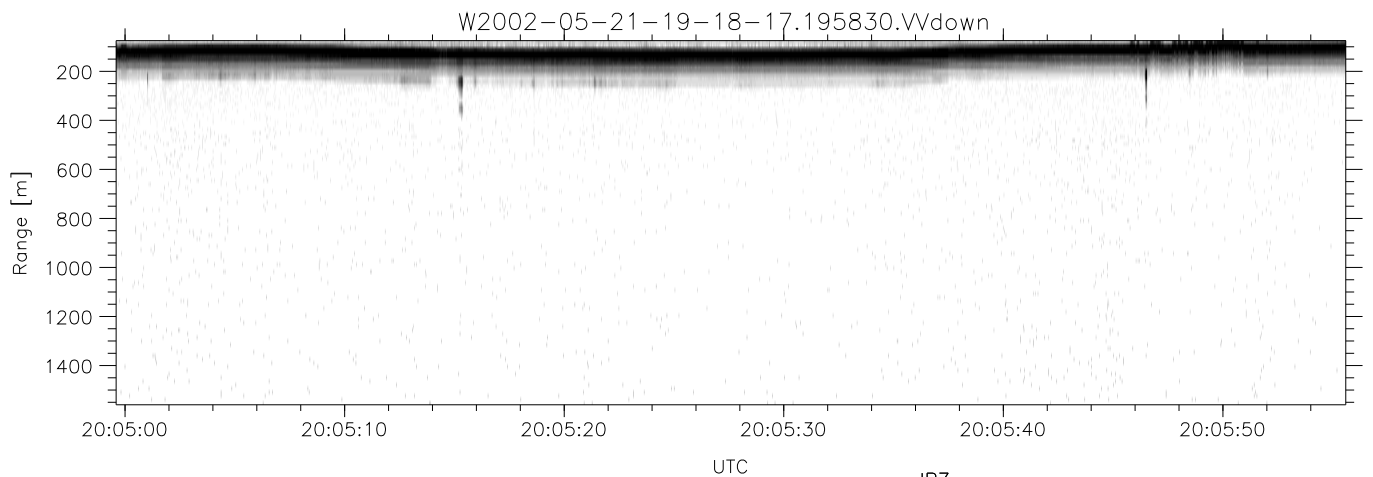
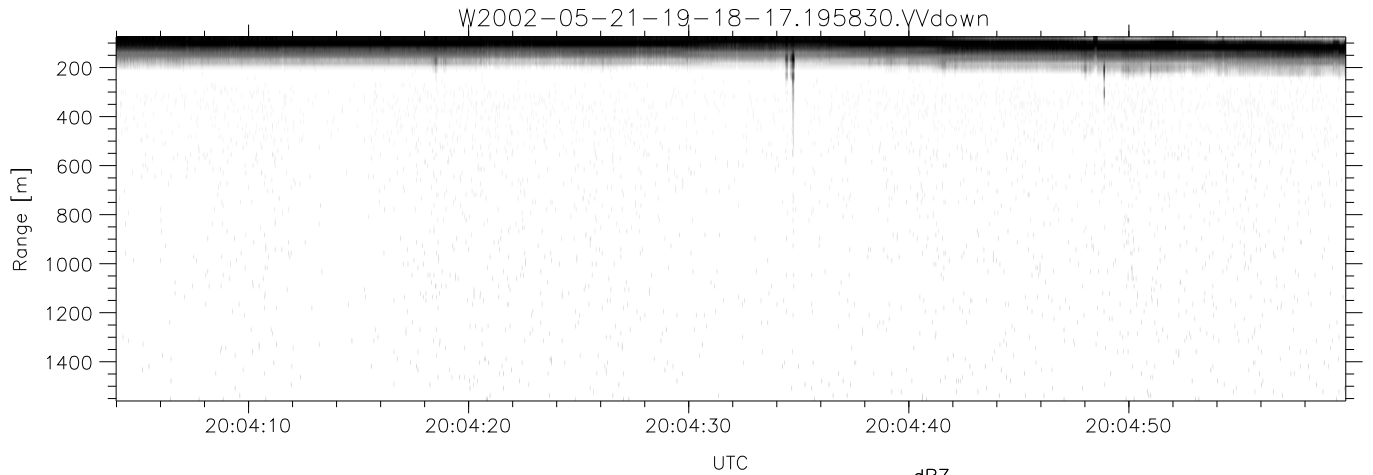
	Min	Max	Mean	Std	Varc%
hhN(dB)	-66.65	-63.39	-65.01	-75.15	9.7
vvN(dB)	-66.53	-63.32	-64.80	-74.86	9.9
hhL(dB)	-16.18	-5.34	-10.20	-15.78	27.7
vvL(dB)	-32.94	-12.62	-15.03	-21.01	25.2
ppN(m/s)	-12.56	12.11	-0.09	4.15	
ppT(m/s)	-99.25	95.70	-0.73	32.82	
hh/vv(dB)	-NaN	60.33	16.33	37.20	1223
vh/hh(dB)	-NaN	10.74	-10.78	-3.10	585.
hv/vv(dB)	-NaN	-13.20	-35.78	-32.11	233.
hnjmp(dB)	-2.13	2.35	0.14	-8.49	13.7
vnjmp(dB)	-1.90	2.56	0.15	-8.44	13.8



IHOP 2002 (dual-antenna config, modes 1,3,4,7) Data (cal: 49.0,50.0)

W2002-05-21-19-18-17 - PPMAG4
 IRIG:1,UTC: 19:18:06.47 to 20:53:54.62, Dur: 5748s
 TimeLngth: 5748.15s, TimeInt: 30ms (32.7pps)
 TimeCor=-13.0s, DSPDif[ms]: mn=30,mx-min=220
 PPS(min,max,std): 28,36,2.10
 Prof: 112 to 188351, NumProf(t/r): 188239/16065
 ProcTime/Recs: 19:58:30-20:06:37/80325-96389
 MxACQtime: 33ms; DRate: 183.3KB/s; Flags: 0, 0, 0
 Pulse: 275ns, IFfilt: 5.0MHz; ppPol: HH HV VV
 TxPol: HHVV, PRF: 20 10 20 10 kHz
 Range: Delay 75m, Spacing 15m, Gates 100
 Ave. Pulses: 84, Rng/Prof Aspect@90m/s: 5.5

	Min	Max	Mean	Std	Varc%
hhN(dB)	-66.65	-63.39	-65.01	-75.15	9.7
vvN(dB)	-66.53	-63.32	-64.80	-74.86	9.9
hhL(dB)	-16.18	-5.34	-10.20	-15.78	27.7
vvL(dB)	-32.94	-12.62	-15.03	-21.01	25.2
ppN(m/s)	-12.56	12.11	-0.09	4.15	
ppT(m/s)	-99.25	95.70	-0.73	32.82	
hh/vv(dB)	-NaN	60.33	16.33	37.20	1223
vh/hh(dB)	-NaN	10.74	-10.78	-3.10	585.
hv/vv(dB)	-NaN	-13.20	-35.78	-32.11	233.
hnjmp(dB)	-2.13	2.35	0.14	-8.49	13.7
vnjmp(dB)	-1.90	2.56	0.15	-8.44	13.8



IHOP 2002 (dual-antenna config, modes 1,3,4,7) Data (cal: 49.0,50.0)

W2002-05-21-19-18-17 - PPMAG4
 IRIG:1,UTC: 19:18:06.47 to 20:53:54.62, Dur: 5748s
 TimeLngth: 5748.15s, TimeInt: 30ms (32.7pps)
 TimeCor=-13.0s, DSPDif[ms]: mn=30,mx-min=220
 PPS(min,max,std): 28,36,2.10
 Prof: 112 to 188351, NumProf(t/r): 188239/16065
 ProcTime/Recs: 19:58:30-20:06:37/80325-96389
 MxACQtime: 33ms; DRate: 183.3KB/s; Flags: 0, 0, 0
 Pulse: 275ns, IFfilt: 5.0MHz; ppPol: HH HV VV
 TxPol: HHVV, PRF: 20 10 20 10 kHz
 Range: Delay 75m, Spacing 15m, Gates 100
 Ave. Pulses: 84, Rng/Prof Aspect@90m/s: 5.5

	Min	Max	Mean	Std	Varc%
hhN(dB)	-66.65	-63.39	-65.01	-75.15	9.7
vvN(dB)	-66.53	-63.32	-64.80	-74.86	9.9
hhL(dB)	-16.18	-5.34	-10.20	-15.78	27.7
vvL(dB)	-32.94	-12.62	-15.03	-21.01	25.2
ppN(m/s)	-12.56	12.11	-0.09	4.15	
ppT(m/s)	-99.25	95.70	-0.73	32.82	
hh/vv(dB)	-NaN	60.33	16.33	37.20	1223
vh/hh(dB)	-NaN	10.74	-10.78	-3.10	585.
hv/vv(dB)	-NaN	-13.20	-35.78	-32.11	233.
hnjmp(dB)	-2.13	2.35	0.14	-8.49	13.7
vnjmp(dB)	-1.90	2.56	0.15	-8.44	13.8