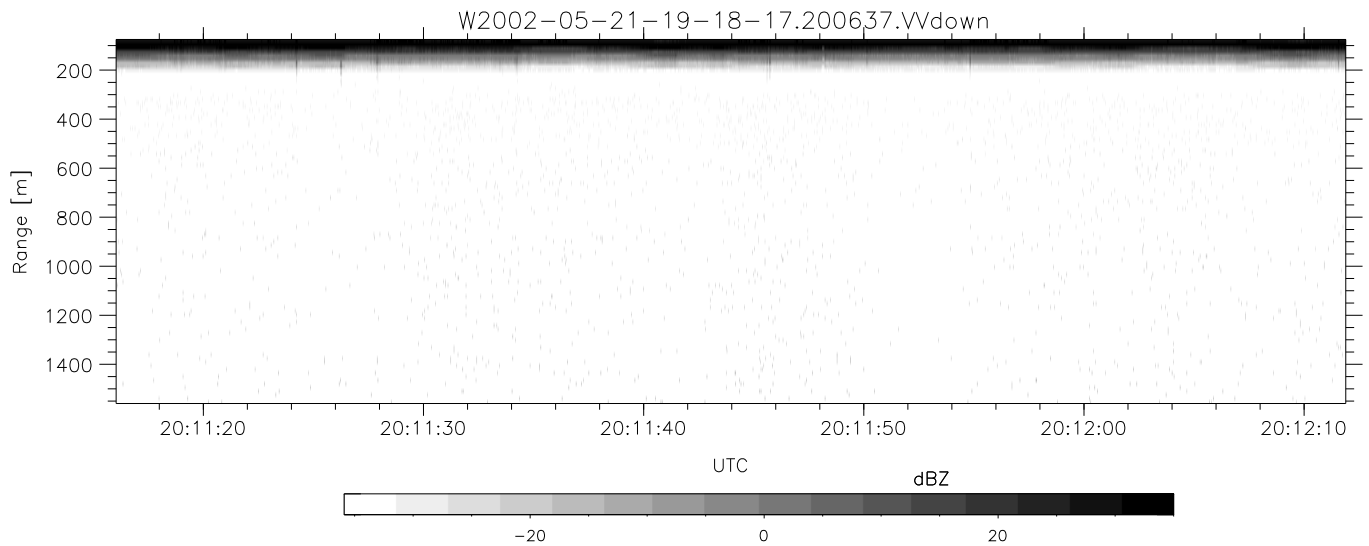
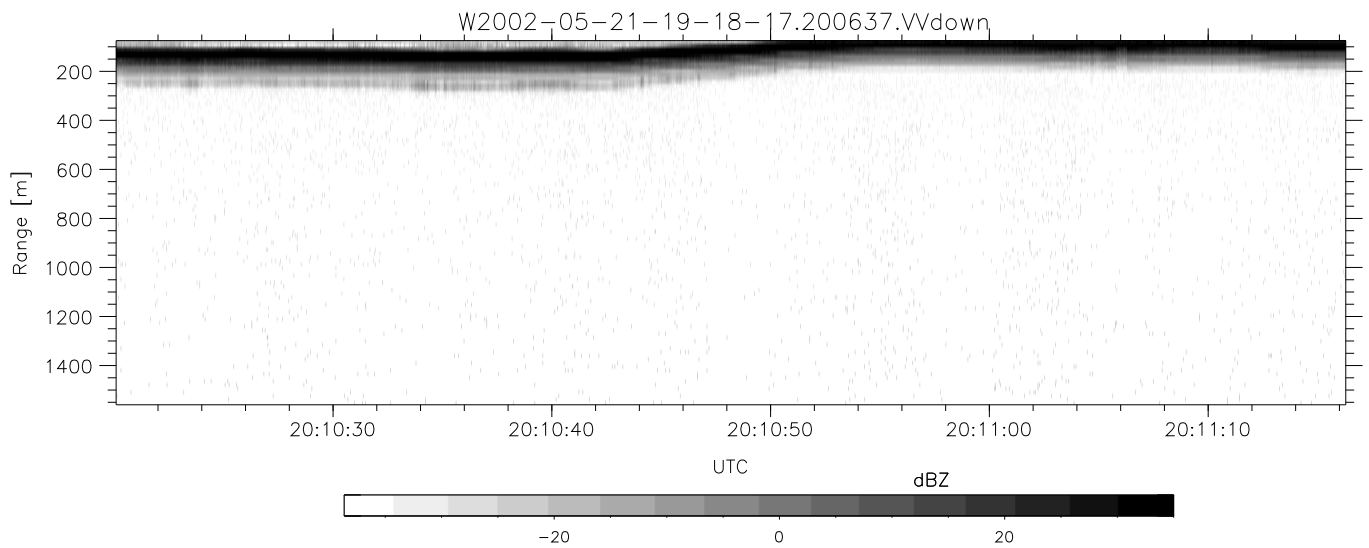
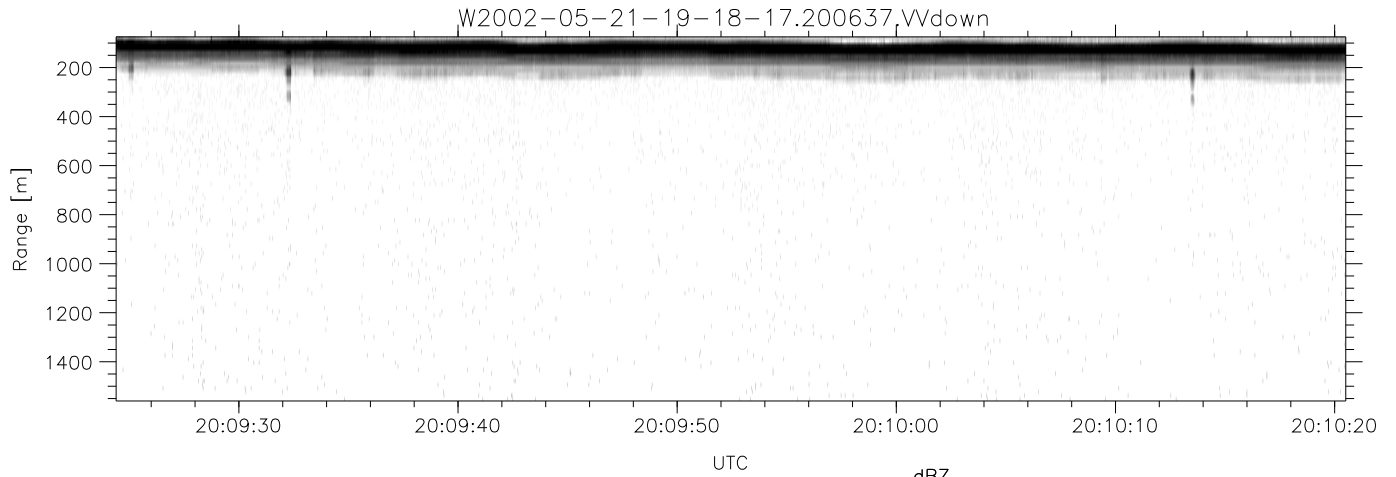


IHOP 2002 (dual-antenna config, modes 1,3,4,7) Data (cal: 49.0,50.0)

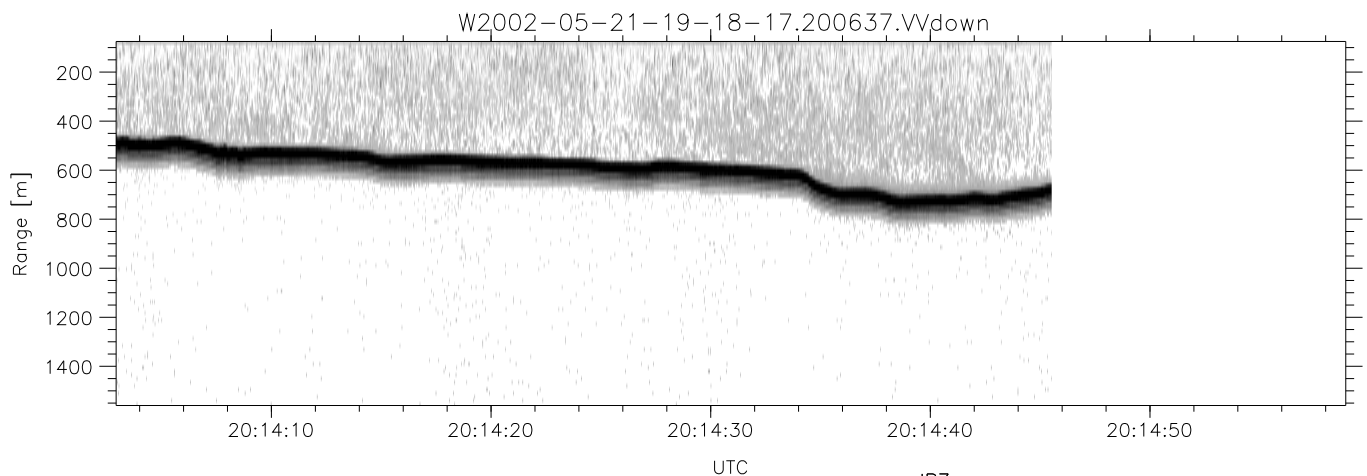
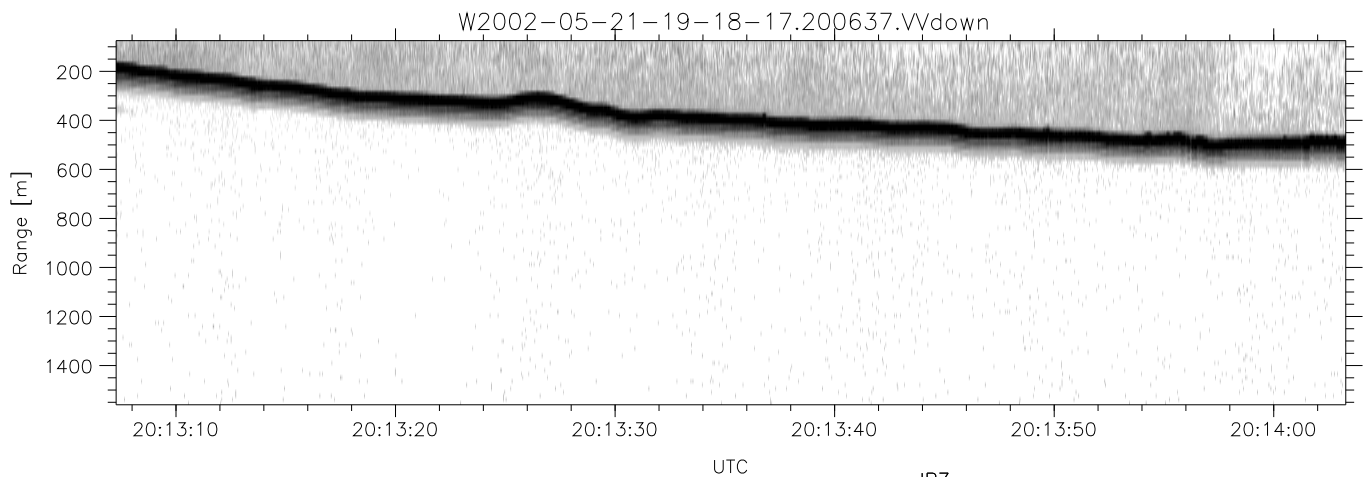
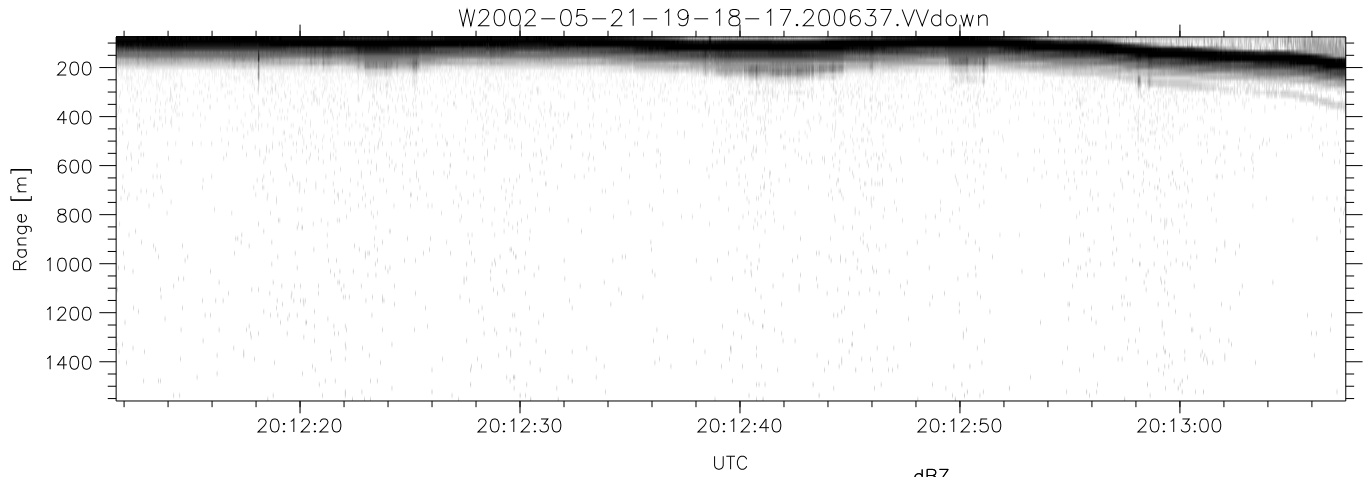
W2002-05-21-19-18-17 - PPMAG4  
 IRIG:1,UTC: 19:18:06.47 to 20:53:54.62, Dur: 5748s  
 TimeLngth: 5748.15s, TimeInt: 30ms (32.7pps)  
 TimeCor=-13.0s, DSPDif[ms]: mn=30,mx-min=225  
 PPS(min,max,std): 27,36,2.11  
 Prof: 112 to 188351, NumProf(t/r): 188239/16065  
 ProcTime/Recs: 20:06:37-20:14:45/96390-112454  
 MxACQtime: 33ms; DRate: 183.3KB/s; Flags: 0, 0, 0  
 Pulse: 275ns, IFfilt: 5.0MHz; ppPol: HH HV VV  
 TxPol: HHVV, PRF: 20 10 20 10 kHz  
 Range: Delay 75m, Spacing 15m, Gates 100  
 Ave. Pulses: 84, Rng/Prof Aspect@90m/s: 5.5

	Min	Max	Mean	Std	Varc%
hhN(dB)	-66.83	-63.41	-65.02	-75.07	9.9
vvN(dB)	-66.63	-63.22	-64.82	-74.92	9.8
hhL(dB)	-17.41	-5.84	-10.11	-15.17	31.2
vvL(dB)	-32.81	-11.66	-15.15	-20.83	27.0
ppN(m/s)	-12.53	12.69	0.22	4.19	
ppT(m/s)	-98.99	100.25	1.71	33.06	
hh/vv(dB)	-NaN	67.84	17.81	42.93	3251
vh/hh(dB)	-NaN	21.72	-4.73	7.51	1675
hv/vv(dB)	-NaN	-12.81	-36.59	-31.73	306.
hnjmp(dB)	-2.23	2.34	-0.06	-8.74	13.5
vnjmp(dB)	-2.45	2.17	-0.06	-8.72	13.6



IHOP 2002 (dual-antenna config, modes 1,3,4,7) Data (cal: 49.0,50.0)

	Min	Max	Mean	Std	Varc%
W2002-05-21-19-18-17 - PPMAG4					
IRIG:1,UTC: 19:18:06.47 to 20:53:54.62, Dur: 5748s					
TimeLngth: 5748.15s, TimeInt: 30ms (32.7pps)					
TimeCor=-13.0s, DSPDif[ms]: mn=30,mx-min=225					
PPS(min,max,std): 27,36,2.11					
Prof: 112 to 188351, NumProf(t/r): 188239/16065					
ProcTime/Recs: 20:06:37-20:14:45/96390-112454					
MxACQtime: 33ms; DRate: 183.3KB/s; Flags: 0, 0, 0					
Pulse: 275ns, IFilt: 5.0MHz; ppPol: HH HV VV					
TxPol: HHVV, PRF: 20 10 20 10 kHz					
Range: Delay 75m, Spacing 15m, Gates 100					
Ave. Pulses: 84, Rng/Prof Aspect@90m/s: 5.5					
hhN(dB)	-66.83	-63.41	-65.02	-75.07	9.9
vvN(dB)	-66.63	-63.22	-64.82	-74.92	9.8
hhL(dB)	-17.41	-5.84	-10.11	-15.17	31.2
vvL(dB)	-32.81	-11.66	-15.15	-20.83	27.0
ppN(m/s)	-12.53	12.69	0.22	4.19	
ppT(m/s)	-98.99	100.25	1.71	33.06	
hh/vv(dB)	-NaN	67.84	17.81	42.93	3251
vh/hh(dB)	-NaN	21.72	-4.73	7.51	1675
hv/vv(dB)	-NaN	-12.81	-36.59	-31.73	306.
hnjmp(dB)	-2.23	2.34	-0.06	-8.74	13.5
vnjmp(dB)	-2.45	2.17	-0.06	-8.72	13.6



IHOP 2002 (dual-antenna config, modes 1,3,4,7) Data (cal: 49.0,50.0)

W2002-05-21-19-18-17 - PPMAG4  
 IRIG:1,UTC: 19:18:06.47 to 20:53:54.62, Dur: 5748s  
 TimeLngth: 5748.15s, TimeInt: 30ms (32.7pps)  
 TimeCor=-13.0s, DSPDif[ms]: mn=30,mx-min=225  
 PPS(min,max,std): 27,36,2.11  
 Prof: 112 to 188351, NumProf(t/r): 188239/16065  
 ProcTime/Recs: 20:06:37-20:14:45/96390-112454  
 MxACQtime: 33ms; DRate: 183.3KB/s; Flags: 0, 0, 0  
 Pulse: 275ns, IFfilt: 5.0MHz; ppPol: HH HV VV  
 TxPol: HHVV, PRF: 20 10 20 10 kHz  
 Range: Delay 75m, Spacing 15m, Gates 100  
 Ave. Pulses: 84, Rng/Prof Aspect@90m/s: 5.5

	Min	Max	Mean	Std	Varc%
hhN(dB)	-66.83	-63.41	-65.02	-75.07	9.9
vvN(dB)	-66.63	-63.22	-64.82	-74.92	9.8
hhL(dB)	-17.41	-5.84	-10.11	-15.17	31.2
vvL(dB)	-32.81	-11.66	-15.15	-20.83	27.0
ppN(m/s)	-12.53	12.69	0.22	4.19	
ppT(m/s)	-98.99	100.25	1.71	33.06	
hh/vv(dB)	-NaN	67.84	17.81	42.93	3251
vh/hh(dB)	-NaN	21.72	-4.73	7.51	1675
hv/vv(dB)	-NaN	-12.81	-36.59	-31.73	306.
hnjmp(dB)	-2.23	2.34	-0.06	-8.74	13.5
vnjmp(dB)	-2.45	2.17	-0.06	-8.72	13.6