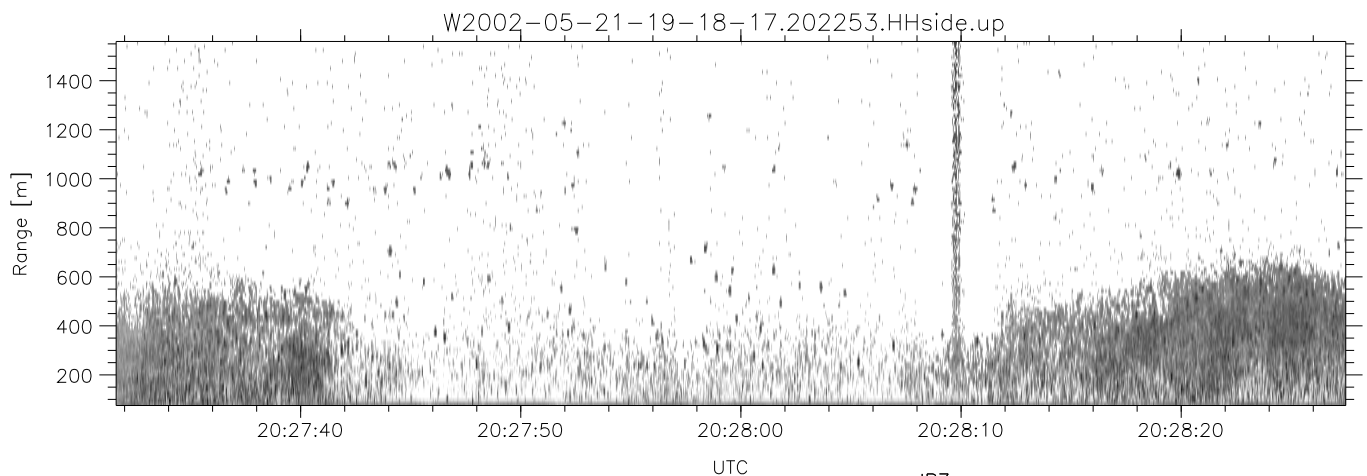
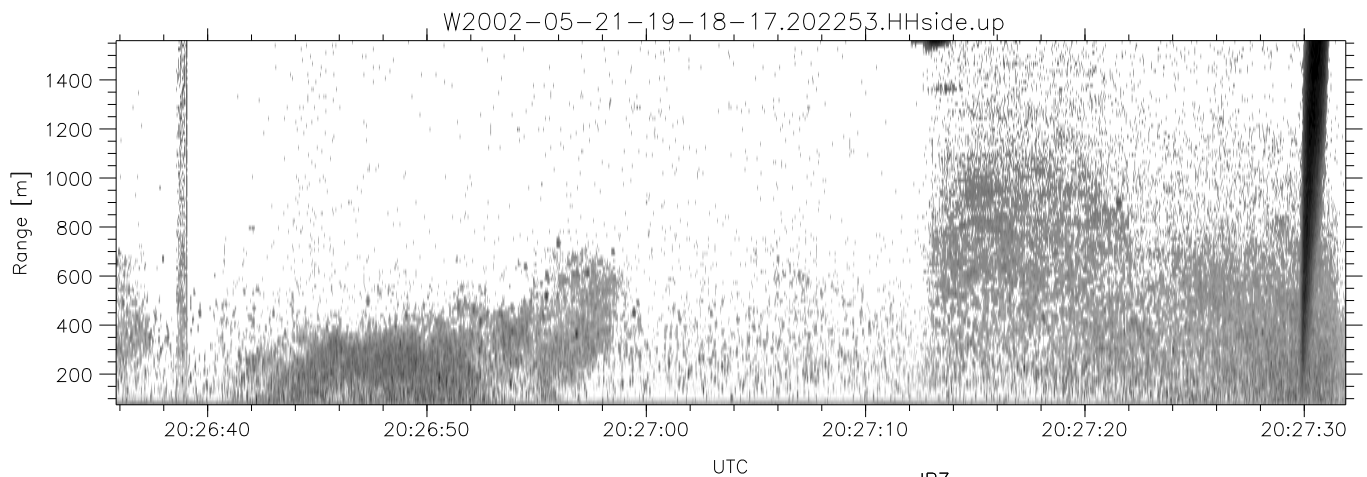
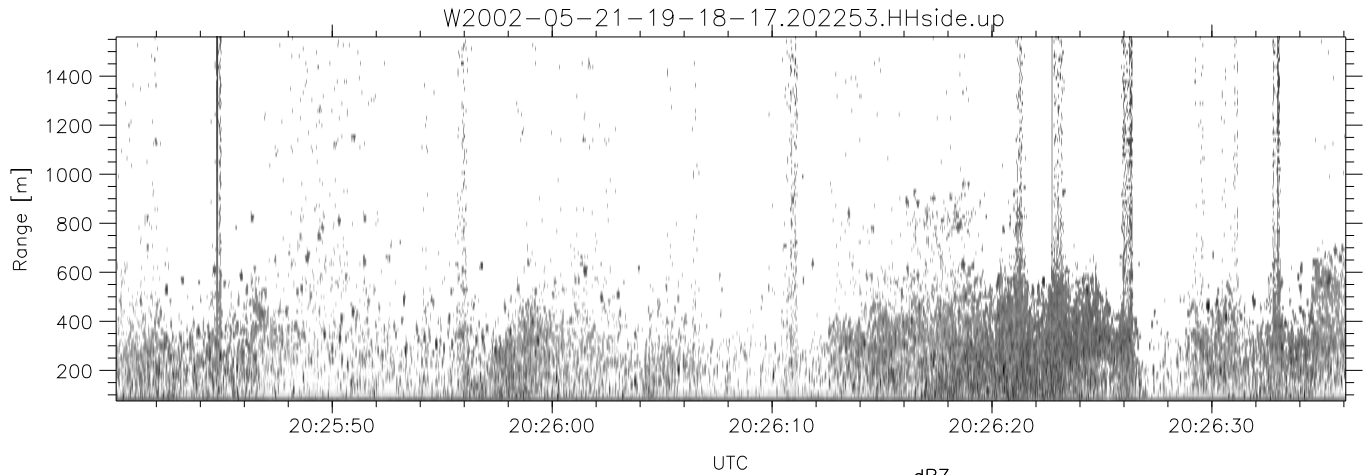


IHOP 2002 (dual-antenna config, modes 1,3,4,7) Data (cal: 49.0,50.0)

W2002-05-21-19-18-17 - PPMAG4  
 IRIG:1,UTC: 19:18:06.47 to 20:53:54.62, Dur: 5748s  
 TimeLngth: 5748.15s, TimeInt: 30ms (32.7pps)  
 TimeCor=-13.0s, DSPDif[ms]: mn=30,mx-min=229  
 PPS(min,max,std): 28,36,2.12  
 Prof: 112 to 188351, NumProf(t/r): 188239/16065  
 ProcTime/Recs: 20:22:53-20:31:01/128520-144584  
 MxACQtime: 33ms; DRate: 183.3KB/s; Flags: 0, 0, 0  
 Pulse: 275ns, IFfilt: 5.0MHz; ppPol: HH HV VV  
 TxPol: HHVV, PRF: 20 10 20 10 kHz  
 Range: Delay 75m, Spacing 15m, Gates 100  
 Ave. Pulses: 84, Rng/Prof Aspect@90m/s: 5.5

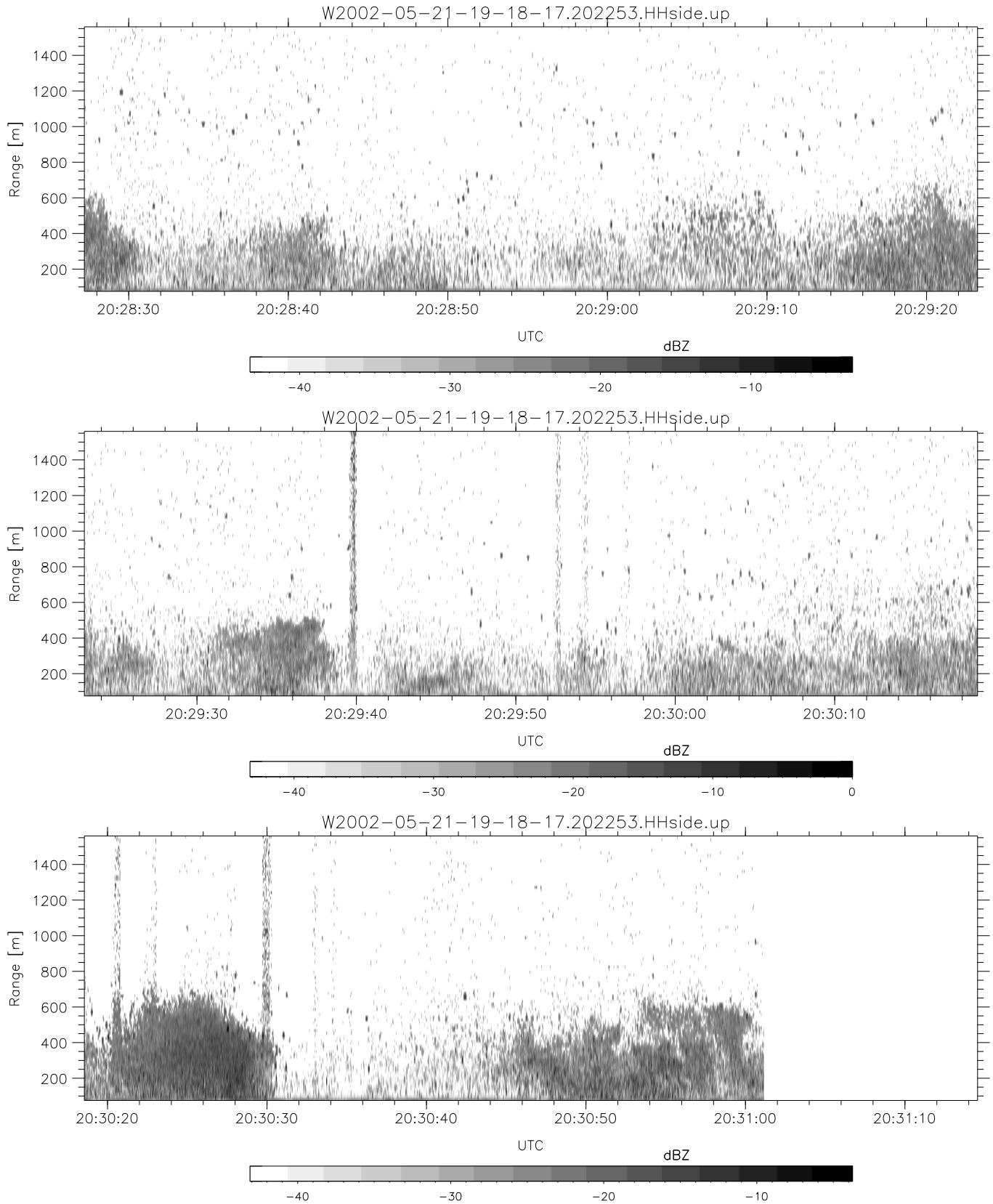
	Min	Max	Mean	Std	Varc%
hhN(dB)	-66.85	-61.11	-64.98	-73.40	14.4
vvN(dB)	-66.35	-62.65	-64.78	-74.49	10.7
hhL(dB)	-29.89	-10.64	-14.94	-18.41	45.0
vvL(dB)	-33.29	-11.88	-14.87	-19.85	31.7
ppN(m/s)	-12.81	12.74	0.45	4.32	
ppT(m/s)	-101.1	100.66	3.53	34.14	
hh/vv(dB)	-NaN	50.37	14.17	32.54	6877
vh/hh(dB)	-NaN	-28.57	-35.56	-34.79	119.
hv/vv(dB)	-NaN	-27.36	-57.55	-42.43	3245
hh_jmp(dB)	-2.75	2.31	-0.08	-8.74	13.6
vv_jmp(dB)	-2.41	2.44	-0.07	-8.71	13.7



IHOP 2002 (dual-antenna config, modes 1,3,4,7) Data (cal: 49.0,50.0)

W2002-05-21-19-18-17 - PPMAG4  
 IRIG:1,UTC: 19:18:06.47 to 20:53:54.62, Dur: 5748s  
 TimeLngth: 5748.15s, TimeInt: 30ms (32.7pps)  
 TimeCor=-13.0s, DSPDif[ms]: mn=30,mx-min=229  
 PPS(min,max,std): 28,36,2.12  
 Prof: 112 to 188351, NumProf(t/r): 188239/16065  
 ProcTime/Recs: 20:22:53-20:31:01/128520-144584  
 MxACQtime: 33ms; DRate: 183.3KB/s; Flags: 0, 0, 0  
 Pulse: 275ns, IFilt: 5.0MHz; ppPol: HH HV VV  
 TxPol: HHVV, PRF: 20 10 20 10 kHz  
 Range: Delay 75m, Spacing 15m, Gates 100  
 Ave. Pulses: 84, Rng/Prof Aspect@90m/s: 5.5

	Min	Max	Mean	Std	Varc%
hhN(dB)	-66.85	-61.11	-64.98	-73.40	14.4
vvN(dB)	-66.35	-62.65	-64.78	-74.49	10.7
hhL(dB)	-29.89	-10.64	-14.94	-18.41	45.0
vvL(dB)	-33.29	-11.88	-14.87	-19.85	31.7
ppN(m/s)	-12.81	12.74	0.45	4.32	
ppT(m/s)	-101.1	100.66	3.53	34.14	
hh/vv(dB)	-NaN	50.37	14.17	32.54	6877
vh/hh(dB)	-NaN	-28.57	-35.56	-34.79	119.
hv/vv(dB)	-NaN	-27.36	-57.55	-42.43	3245
hnjmp(dB)	-2.75	2.31	-0.08	-8.74	13.6
vnjmp(dB)	-2.41	2.44	-0.07	-8.71	13.7



IHOP 2002 (dual-antenna config, modes 1,3,4,7) Data (cal: 49.0,50.0)

W2002-05-21-19-18-17 - PPMAG4  
 IRIG:1,UTC: 19:18:06.47 to 20:53:54.62, Dur: 5748s  
 TimeLngth: 5748.15s, TimeInt: 30ms (32.7pps)  
 TimeCor=-13.0s, DSPDif[ms]: mn=30,mx-min=229  
 PPS(min,max,std): 28,36,2.12  
 Prof: 112 to 188351, NumProf(t/r): 188239/16065  
 ProcTime/Recs: 20:22:53-20:31:01/128520-144584  
 MxACQtime: 33ms; DRate: 183.3KB/s; Flags: 0, 0, 0  
 Pulse: 275ns, IFfilt: 5.0MHz; ppPol: HH HV VV  
 TxPol: HHVV, PRF: 20 10 20 10 kHz  
 Range: Delay 75m, Spacing 15m, Gates 100  
 Ave. Pulses: 84, Rng/Prof Aspect@90m/s: 5.5

	Min	Max	Mean	Std	Varc%
hhN(dB)	-66.85	-61.11	-64.98	-73.40	14.4
vvN(dB)	-66.35	-62.65	-64.78	-74.49	10.7
hhL(dB)	-29.89	-10.64	-14.94	-18.41	45.0
vvL(dB)	-33.29	-11.88	-14.87	-19.85	31.7
ppN(m/s)	-12.81	12.74	0.45	4.32	
ppT(m/s)	-101.1	100.66	3.53	34.14	
hh/vv(dB)	-NaN	50.37	14.17	32.54	6877
vh/hh(dB)	-NaN	-28.57	-35.56	-34.79	119.
hv/vv(dB)	-NaN	-27.36	-57.55	-42.43	3245
hnjmp(dB)	-2.75	2.31	-0.08	-8.74	13.6
vnjmp(dB)	-2.41	2.44	-0.07	-8.71	13.7