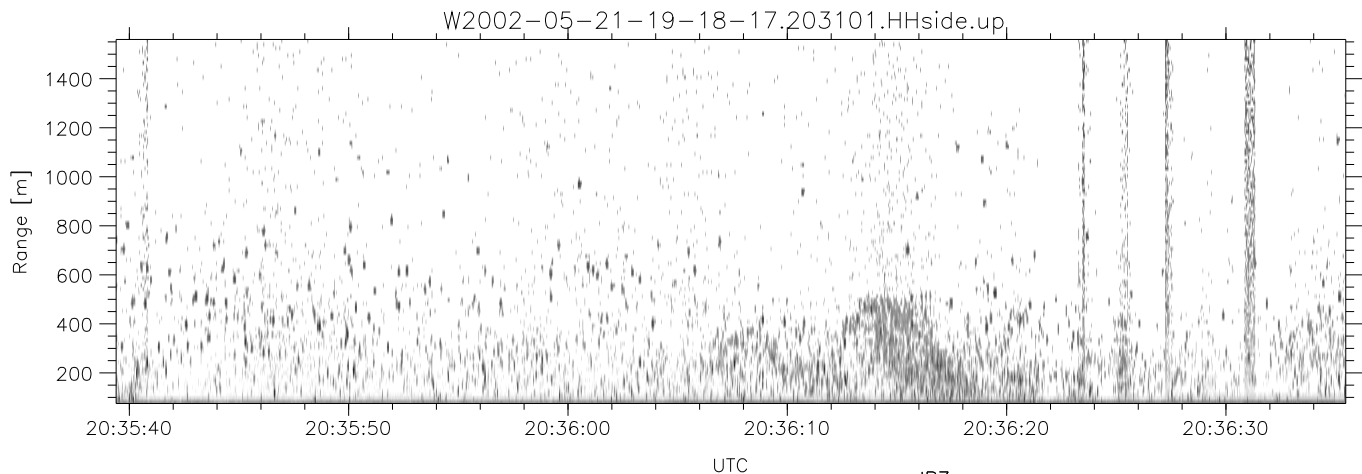
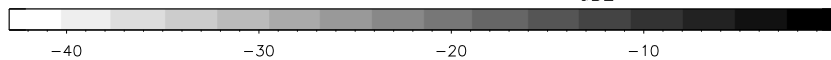
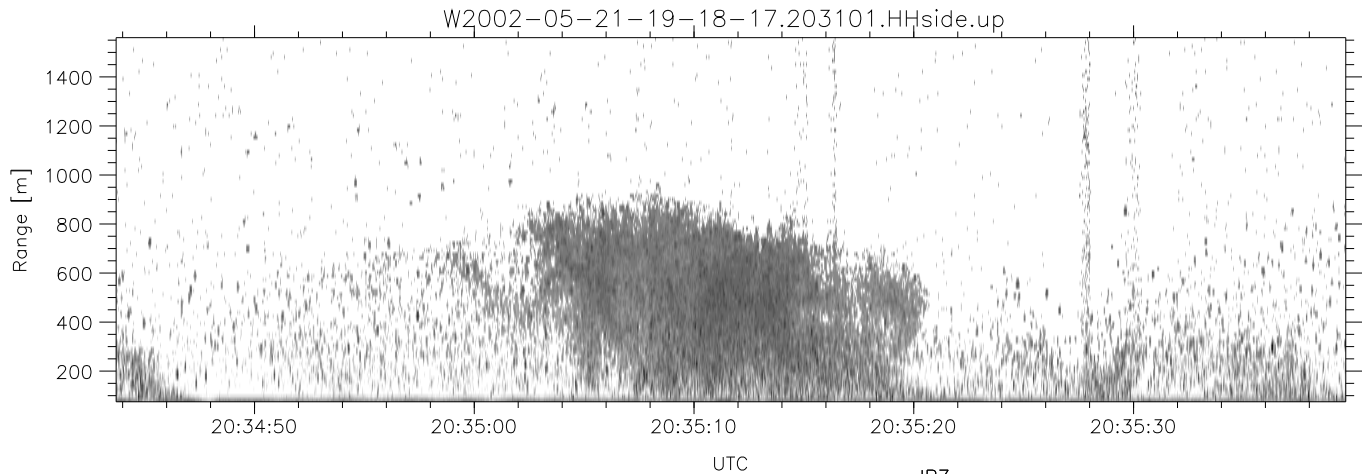
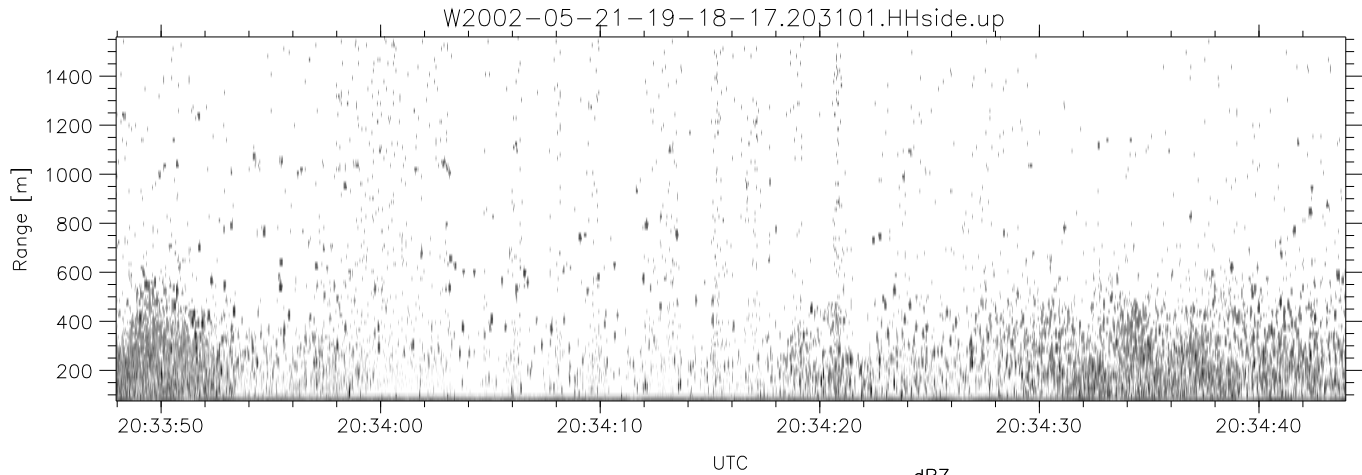


IHOP 2002 (dual-antenna config, modes 1,3,4,7) Data (cal: 49.0,50.0)

W2002-05-21-19-18-17 - PPMAG4  
 IRIG:1,UTC: 19:18:06.47 to 20:53:54.62, Dur: 5748s  
 TimeLngth: 5748.15s, TimeInt: 30ms (32.7pps)  
 TimeCor=-13.0s, DSPDif[ms]: mn=30,mx-min=345  
 PPS(min,max,std): 13,36,3.74  
 Prof: 112 to 188351, NumProf(t/r): 188239/16065  
 ProcTime/Recs: 20:31:01-20:39:20/144585-160649  
 MxAcQtime: 33ms; DRate: 183.3KB/s; Flags: 0, 0, 0  
 Pulse: 275ns, IFilt: 5.0MHz; ppPol: HH HV VV  
 TxPol: HHVV, PRF: 20 10 20 10 kHz  
 Range: Delay 75m, Spacing 15m, Gates 100  
 Ave. Pulses: 84, Rng/Prof Aspect@90m/s: 5.5

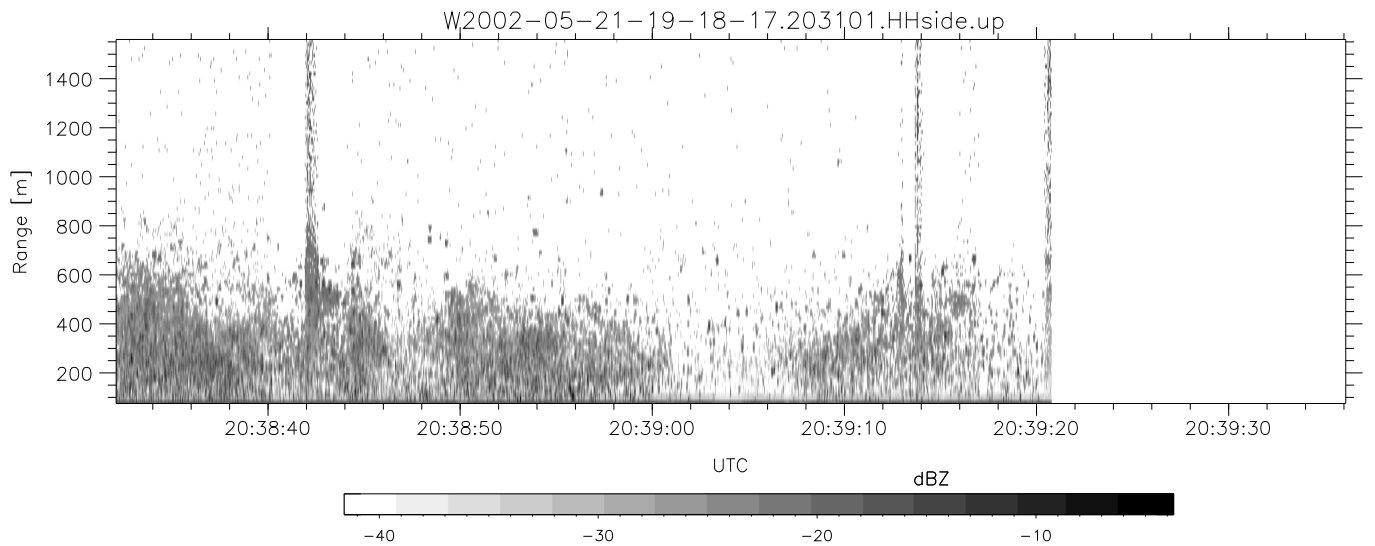
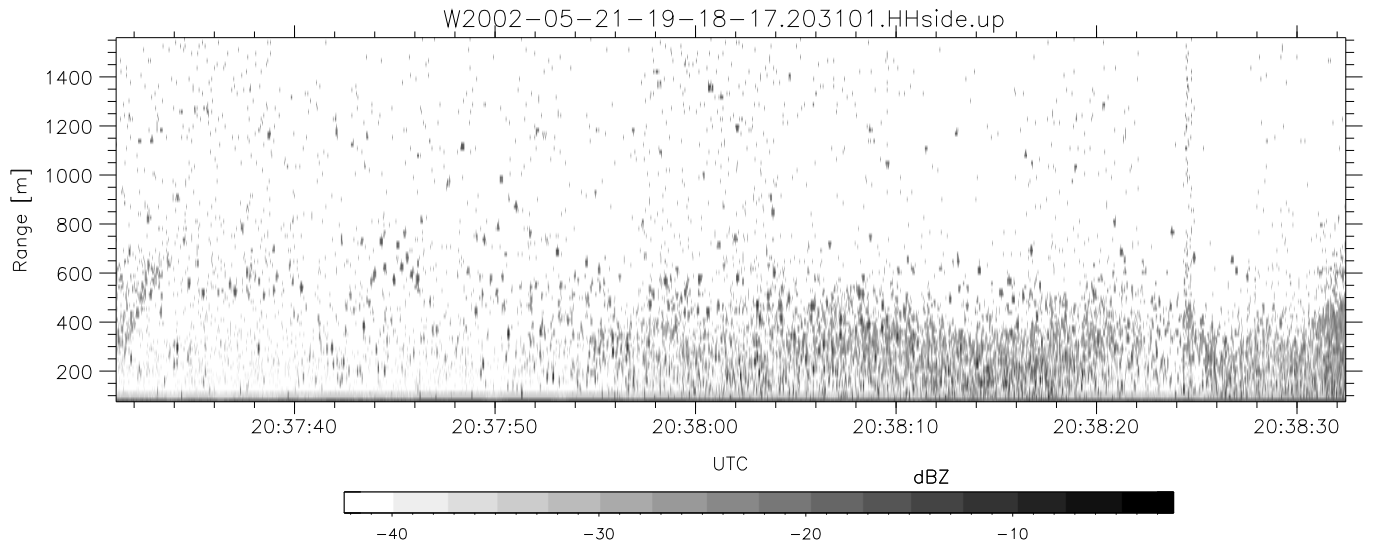
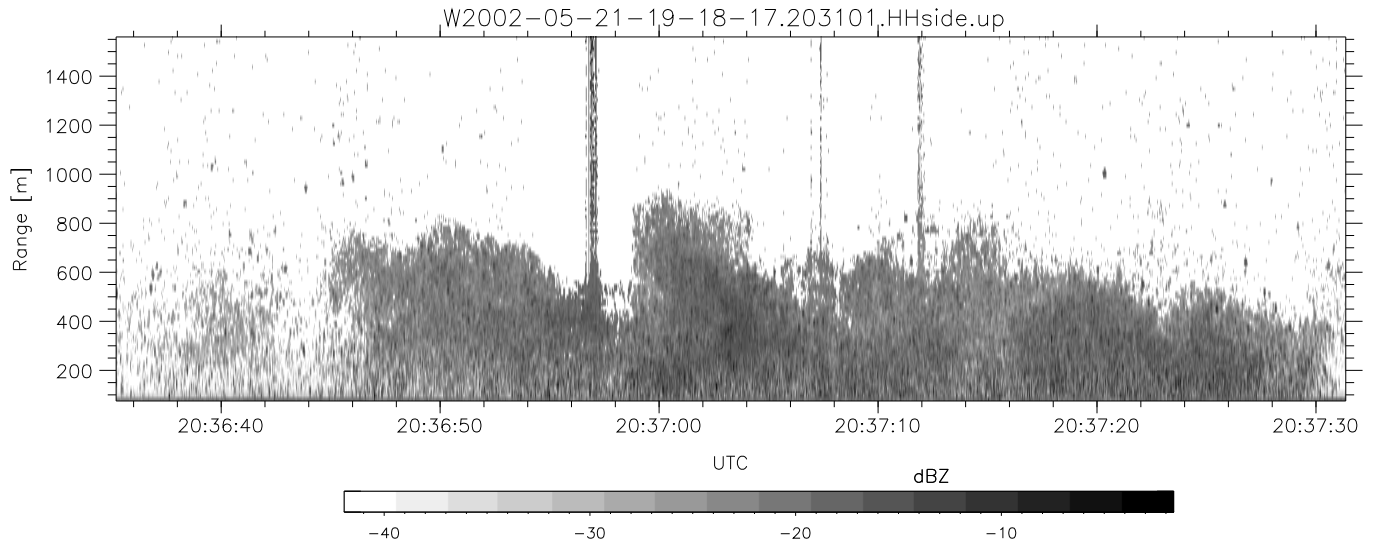
	Min	Max	Mean	Std	Varc%
hhN(dB)	-66.97	-59.93	-64.95	-73.28	14.7
vvN(dB)	-66.63	-61.74	-64.75	-74.29	11.1
hhL(dB)	-27.66	-9.01	-13.90	-16.41	56.1
vvL(dB)	-33.48	-10.85	-14.79	-17.97	48.1
ppN(m/s)	-12.52	12.33	0.74	4.35	
ppT(m/s)	-98.93	97.43	5.85	34.39	
hh/vv(dB)	-NaN	53.32	13.83	32.44	7246
vh/hh(dB)	-NaN	-25.34	-35.12	-33.37	149.
hv/vv(dB)	-NaN	-25.89	-57.60	-42.18	3482
hnjmp(dB)	-2.10	2.64	0.15	-8.43	13.9
vnjmp(dB)	-2.07	2.42	0.14	-8.41	14.0



IHOP 2002 (dual-antenna config, modes 1,3,4,7) Data (cal: 49.0,50.0)

W2002-05-21-19-18-17 - PPMAG4  
 IRIG:1,UTC: 19:18:06.47 to 20:53:54.62, Dur: 5748s  
 TimeLngth: 5748.15s, TimeInt: 30ms (32.7pps)  
 TimeCor=-13.0s, DSPDif[ms]: mn=30,mx-min=345  
 PPS(min,max,std): 13,36,3.74  
 Prof: 112 to 188351, NumProf(t/r): 188239/16065  
 ProcTime/Recs: 20:31:01-20:39:20/144585-160649  
 MxACQtime: 33ms; DRate: 183.3KB/s; Flags: 0, 0, 0  
 Pulse: 275ns, IFfilt: 5.0MHz; ppPol: HH HV VV  
 TxPol: HHVV, PRF: 20 10 20 10 kHz  
 Range: Delay 75m, Spacing 15m, Gates 100  
 Ave. Pulses: 84, Rng/Prof Aspect@90m/s: 5.5

	Min	Max	Mean	Std	Varc%
hhN(dB)	-66.97	-59.93	-64.95	-73.28	14.7
vvN(dB)	-66.63	-61.74	-64.75	-74.29	11.1
hhL(dB)	-27.66	-9.01	-13.90	-16.41	56.1
vvL(dB)	-33.48	-10.85	-14.79	-17.97	48.1
ppN(m/s)	-12.52	12.33	0.74	4.35	
ppT(m/s)	-98.93	97.43	5.85	34.39	
hh/vv(dB)	-NaN	53.32	13.83	32.44	7246
vh/hh(dB)	-NaN	-25.34	-35.12	-33.37	149.
hv/vv(dB)	-NaN	-25.89	-57.60	-42.18	3482
hh_jmp(dB)	-2.10	2.64	0.15	-8.43	13.9
vv_jmp(dB)	-2.07	2.42	0.14	-8.41	14.0



IHOP 2002 (dual-antenna config, modes 1,3,4,7) Data (cal: 49.0,50.0)

W2002-05-21-19-18-17 - PPMAG4  
 IRIG:1,UTC: 19:18:06.47 to 20:53:54.62, Dur: 5748s  
 TimeLngth: 5748.15s, TimeInt: 30ms (32.7pps)  
 TimeCor=-13.0s, DSPDif[ms]: mn=30,mx-min=345  
 PPS(min,max,std): 13,36,3.74  
 Prof: 112 to 188351, NumProf(t/r): 188239/16065  
 ProcTime/Recs: 20:31:01-20:39:20/144585-160649  
 MxACQtime: 33ms; DRate: 183.3KB/s; Flags: 0, 0, 0  
 Pulse: 275ns, IFfilt: 5.0MHz; ppPol: HH HV VV  
 TxPol: HHVV, PRF: 20 10 20 10 kHz  
 Range: Delay 75m, Spacing 15m, Gates 100  
 Ave. Pulses: 84, Rng/Prof Aspect@90m/s: 5.5

	Min	Max	Mean	Std	Varc%
hhN(dB)	-66.97	-59.93	-64.95	-73.28	14.7
vvN(dB)	-66.63	-61.74	-64.75	-74.29	11.1
hhL(dB)	-27.66	-9.01	-13.90	-16.41	56.1
vvL(dB)	-33.48	-10.85	-14.79	-17.97	48.1
ppN(m/s)	-12.52	12.33	0.74	4.35	
ppT(m/s)	-98.93	97.43	5.85	34.39	
hh/vv(dB)	-NaN	53.32	13.83	32.44	7246
vh/hh(dB)	-NaN	-25.34	-35.12	-33.37	149.
hv/vv(dB)	-NaN	-25.89	-57.60	-42.18	3482
hhjmp(dB)	-2.10	2.64	0.15	-8.43	13.9
vvjmp(dB)	-2.07	2.42	0.14	-8.41	14.0