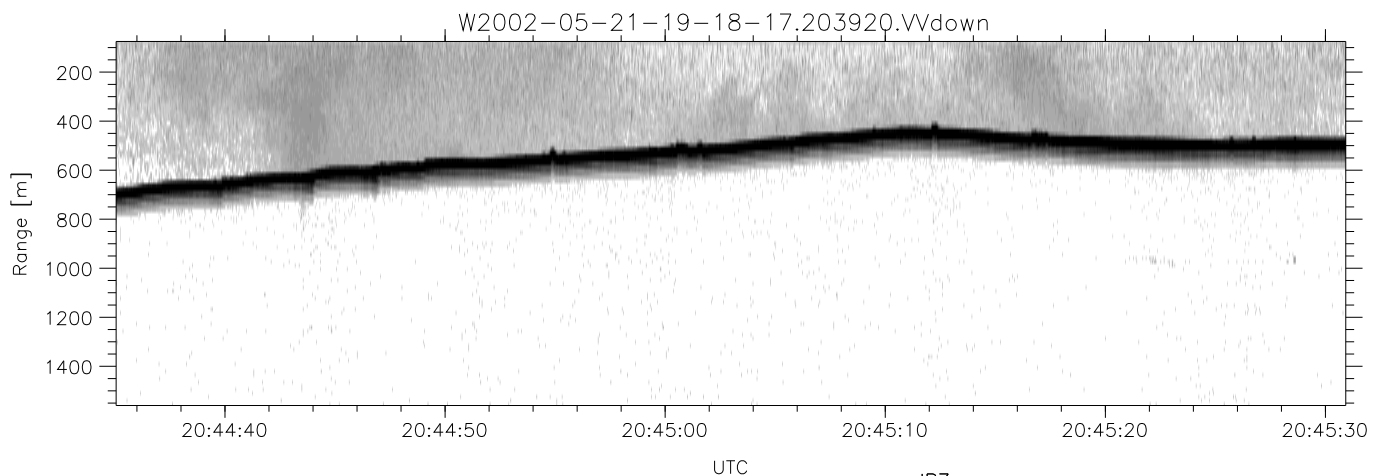
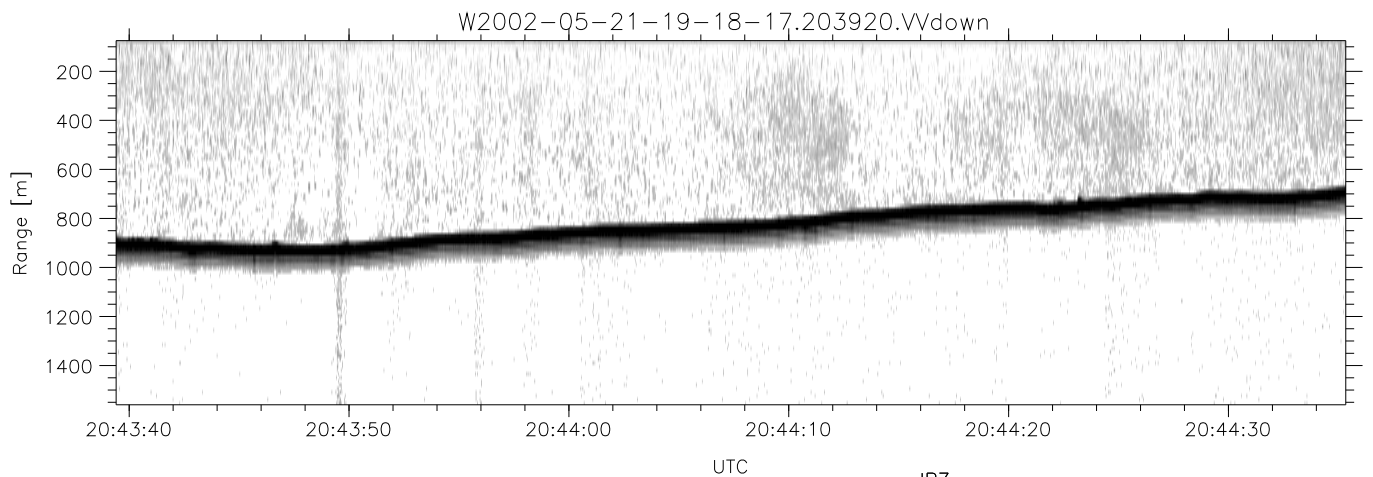
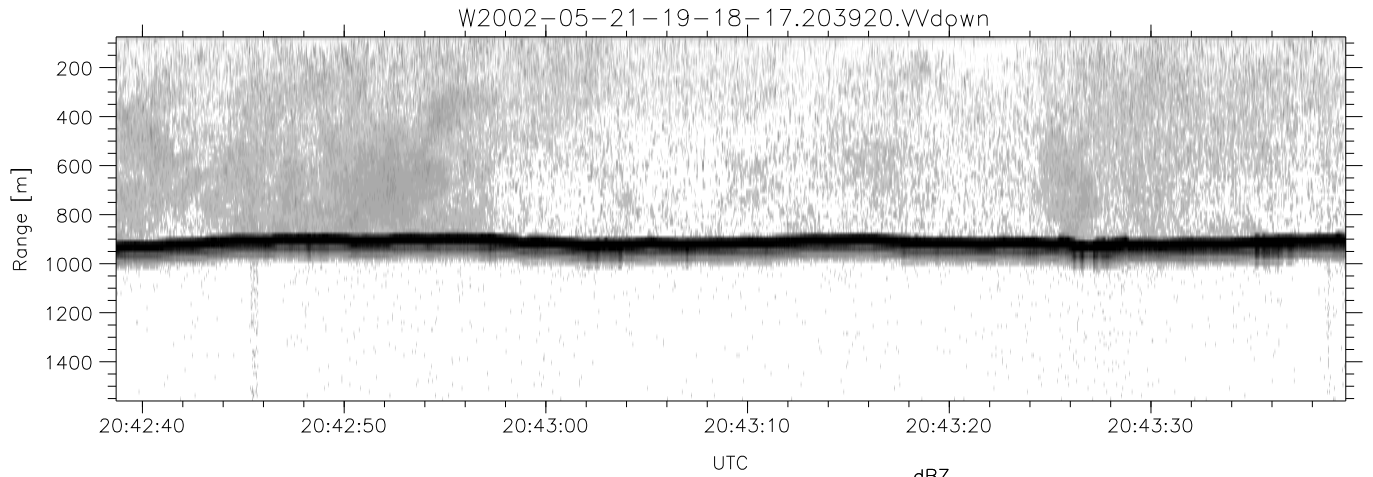


IHOP 2002 (dual-antenna config, modes 1,3,4,7) Data (cal: 49.0,50.0)

W2002-05-21-19-18-17 - PPMAG4
 IRIG:1,UTC: 19:18:06.47 to 20:53:54.62, Dur: 5748s
 TimeLngth: 5748.15s, TimeInt: 30ms (32.7pps)
 TimeCor=-13.0s, DSPDif[ms]: mn=32,mx-min=583
 PPS(min,max,std): 11,36,5.51
 Prof: 112 to 188351, NumProf(t/r): 188239/16065
 ProcTime/Recs: 20:39:20-20:48:04/160650-176714
 MxACQtime: 33ms; DRate: 183.3KB/s; Flags: 0, 0, 0
 Pulse: 275ns, IFilt: 5.0MHz; ppPol: HH HV VV
 TxPol: HHVV, PRF: 20 10 20 10 kHz
 Range: Delay 75m, Spacing 15m, Gates 100
 Ave. Pulses: 84, Rng/Prof Aspect@90m/s: 5.5

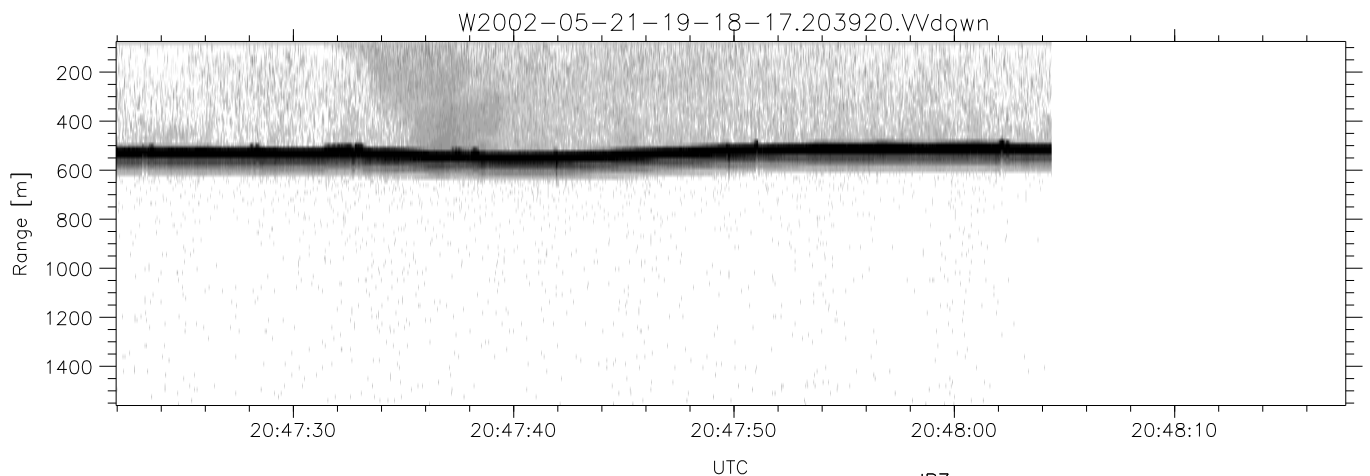
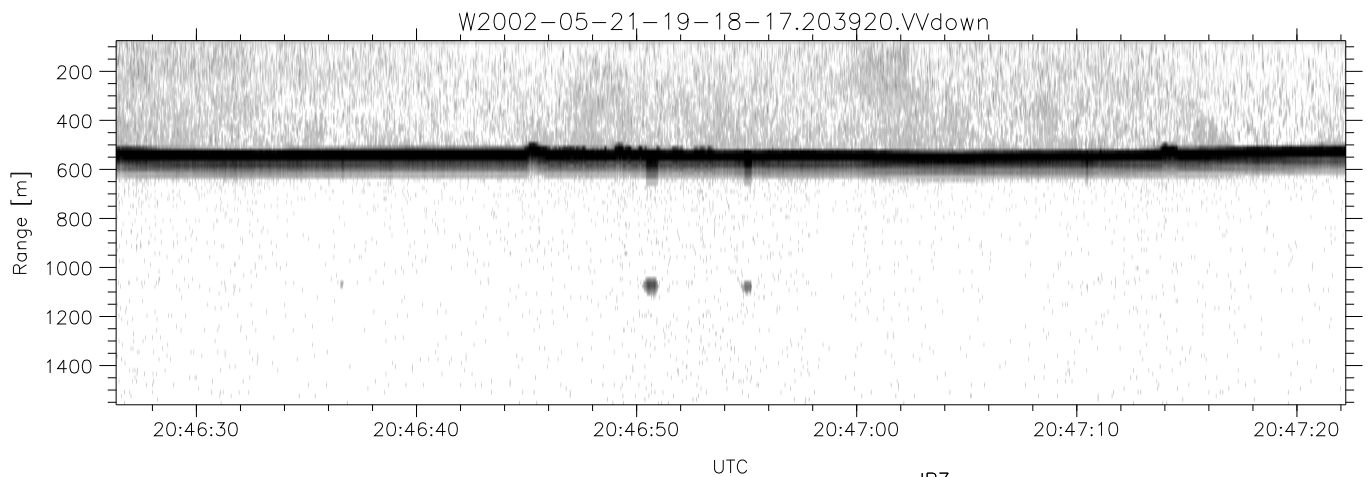
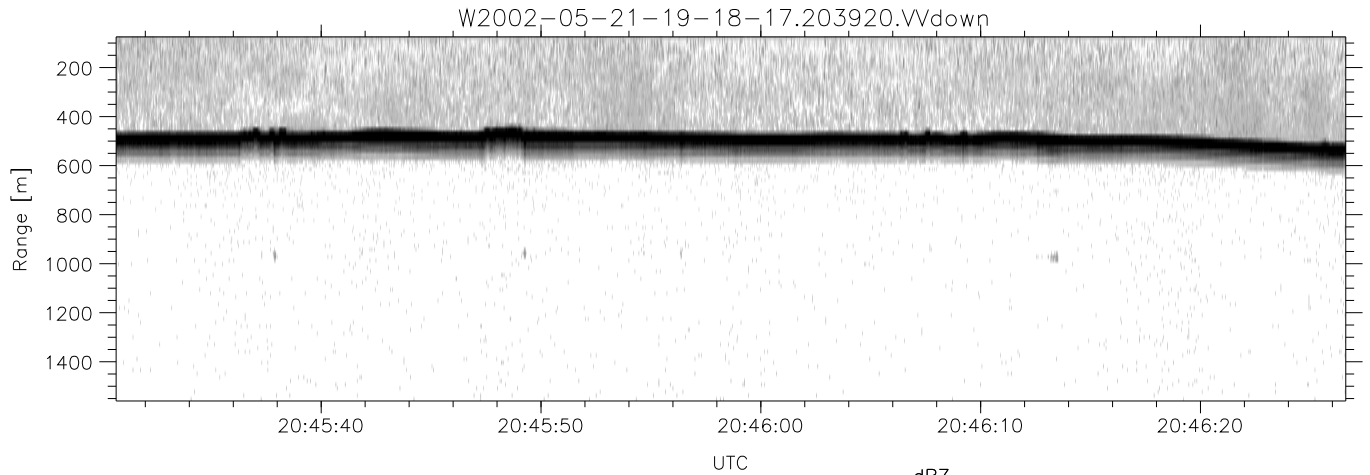
	Min	Max	Mean	Std	Varc%
hhN(dB)	-66.66	-60.76	-64.98	-73.57	13.8
vvN(dB)	-66.46	-62.68	-64.76	-74.44	10.8
hhL(dB)	-26.38	-5.73	-10.96	-16.14	30.3
vvL(dB)	-34.48	-10.54	-13.75	-18.24	35.5
ppN(m/s)	-12.53	12.64	0.66	4.35	
ppT(m/s)	-98.96	99.87	5.23	34.36	
hh/vv(dB)	-NaN	57.98	15.01	33.69	7389
vh/hh(dB)	-NaN	-26.54	-34.57	-34.31	106.
hv/vv(dB)	-NaN	-27.08	-54.03	-42.56	1402
hnjmp(dB)	-3.99	2.14	-0.06	-8.65	13.8
vnjmp(dB)	-2.48	2.21	-0.07	-8.67	13.8



IHOP 2002 (dual-antenna config, modes 1,3,4,7) Data (cal: 49.0,50.0)

W2002-05-21-19-18-17 - PPMAG4
 IRIG:1,UTC: 19:18:06.47 to 20:53:54.62, Dur: 5748s
 TimeLngth: 5748.15s, TimeInt: 30ms (32.7pps)
 TimeCor=-13.0s, DSPDif[ms]: mn=32,mx=-min=583
 PPS(min,max,std): 11,36,5.51
 Prof: 112 to 188351, NumProf(t/r): 188239/16065
 ProcTime/Recs: 20:39:20-20:48:04/160650-176714
 MxACQtime: 33ms; DRate: 183.3KB/s; Flags: 0, 0, 0
 Pulse: 275ns, IFilt: 5.0MHz; ppPol: HH HV VV
 TxPol: HHVV, PRF: 20 10 20 10 kHz
 Range: Delay 75m, Spacing 15m, Gates 100
 Ave. Pulses: 84, Rng/Prof Aspect@90m/s: 5.5

	Min	Max	Mean	Std	Varc%
hhN(dB)	-66.66	-60.76	-64.98	-73.57	13.8
vvN(dB)	-66.46	-62.68	-64.76	-74.44	10.8
hhL(dB)	-26.38	-5.73	-10.96	-16.14	30.3
vvL(dB)	-34.48	-10.54	-13.75	-18.24	35.5
ppN(m/s)	-12.53	12.64	0.66	4.35	
ppT(m/s)	-98.96	99.87	5.23	34.36	
hh/vv(dB)	-NaN	57.98	15.01	33.69	7389
vh/hh(dB)	-NaN	-26.54	-34.57	-34.31	106.
hv/vv(dB)	-NaN	-27.08	-54.03	-42.56	1402
hnjmp(dB)	-3.99	2.14	-0.06	-8.65	13.8
vnjmp(dB)	-2.48	2.21	-0.07	-8.67	13.8



IHOP 2002 (dual-antenna config, modes 1,3,4,7) Data (cal: 49.0,50.0)

W2002-05-21-19-18-17 - PPMAG4
 IRIG:1,UTC: 19:18:06.47 to 20:53:54.62, Dur: 5748s
 TimeLngth: 5748.15s, TimeInt: 30ms (32.7pps)
 TimeCor=-13.0s, DSPDif[ms]: mn=32,mx-min=583
 PPS(min,max,std): 11,36,5.51
 Prof: 112 to 188351, NumProf(t/r): 188239/16065
 ProcTime/Recs: 20:39:20-20:48:04/160650-176714
 MxACQtime: 33ms; DRate: 183.3KB/s; Flags: 0, 0, 0
 Pulse: 275ns, IFilt: 5.0MHz; ppPol: HH HV VV
 TxPol: HHVV, PRF: 20 10 20 10 kHz
 Range: Delay 75m, Spacing 15m, Gates 100
 Ave. Pulses: 84, Rng/Prof Aspect@90m/s: 5.5

	Min	Max	Mean	Std	Varc%
hhN(dB)	-66.66	-60.76	-64.98	-73.57	13.8
vvN(dB)	-66.46	-62.68	-64.76	-74.44	10.8
hhL(dB)	-26.38	-5.73	-10.96	-16.14	30.3
vvL(dB)	-34.48	-10.54	-13.75	-18.24	35.5
ppN(m/s)	-12.53	12.64	0.66	4.35	
ppT(m/s)	-98.96	99.87	5.23	34.36	
hh/vv(dB)	-NaN	57.98	15.01	33.69	7389
vh/hh(dB)	-NaN	-26.54	-34.57	-34.31	106.
hv/vv(dB)	-NaN	-27.08	-54.03	-42.56	1402
hnjmp(dB)	-3.99	2.14	-0.06	-8.65	13.8
vnjmp(dB)	-2.48	2.21	-0.07	-8.67	13.8