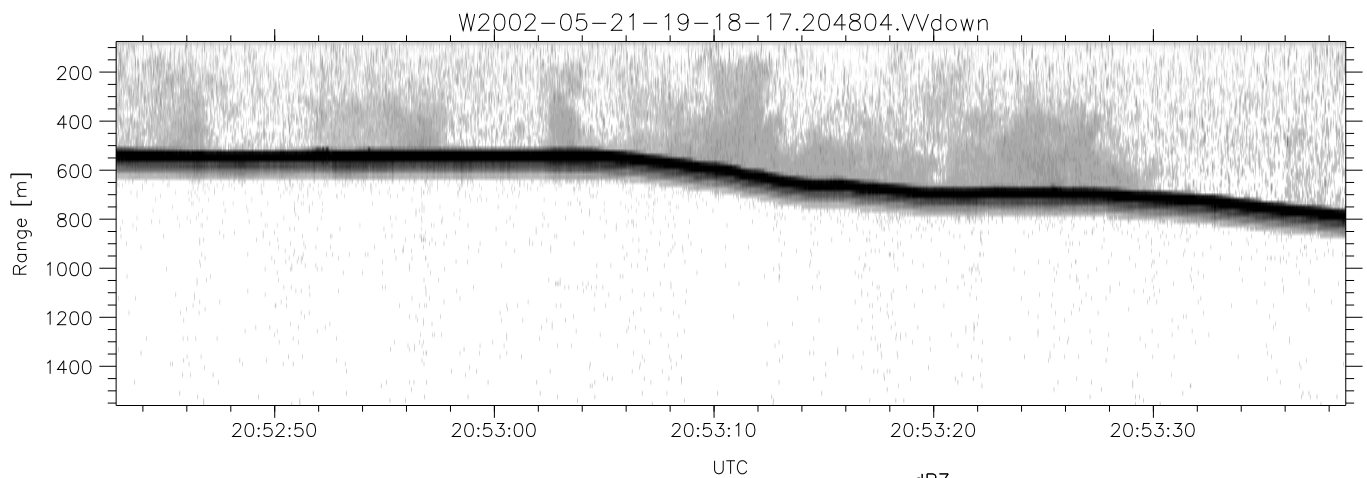
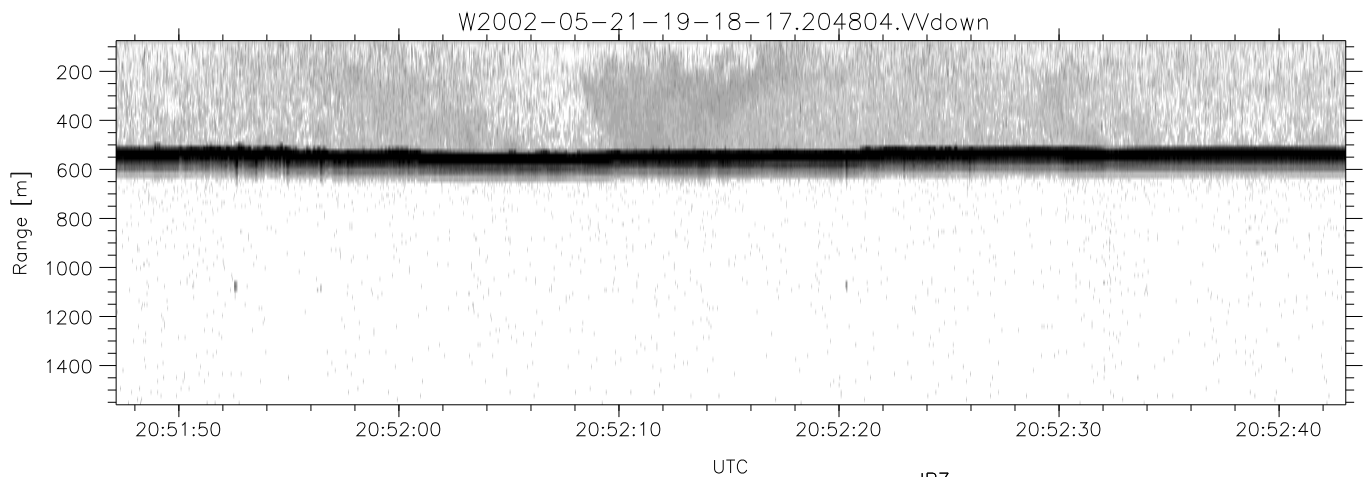
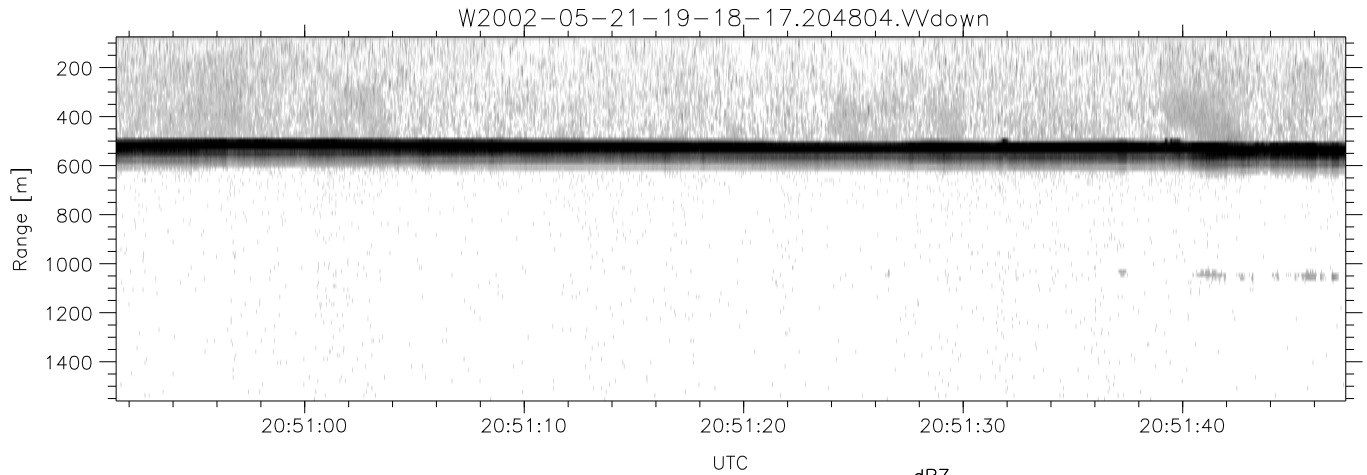


IHOP 2002 (dual-antenna config, modes 1,3,4,7) Data (cal: 49.0,50.0)

W2002-05-21-19-18-17 - PPMAG4
 IRIG:1,UTC: 19:18:06.47 to 20:53:54.62, Dur: 5748s
 TimeLngth: 5748.15s, TimeInt: 30ms (32.7pps)
 TimeCor=-13.0s, DSPDif[ms]: mn=30,mx-min=222
 PPS(min,max,std): 28,36,2.01
 Prof: 112 to 188351, NumProf(t/r): 188239/11524
 ProcTime/Recs: 20:48:04-20:53:54/176715-188238
 MxAcQtime: 33ms; DRate: 183.3KB/s; Flags: 0, 0, 0
 Pulse: 275ns, IFfilt: 5.0MHz; ppPol: HH HV VV
 TxPol: HHVV, PRF: 20 10 20 10 kHz
 Range: Delay 75m, Spacing 15m, Gates 100
 Ave. Pulses: 84, Rng/Prof Aspect@90m/s: 5.5

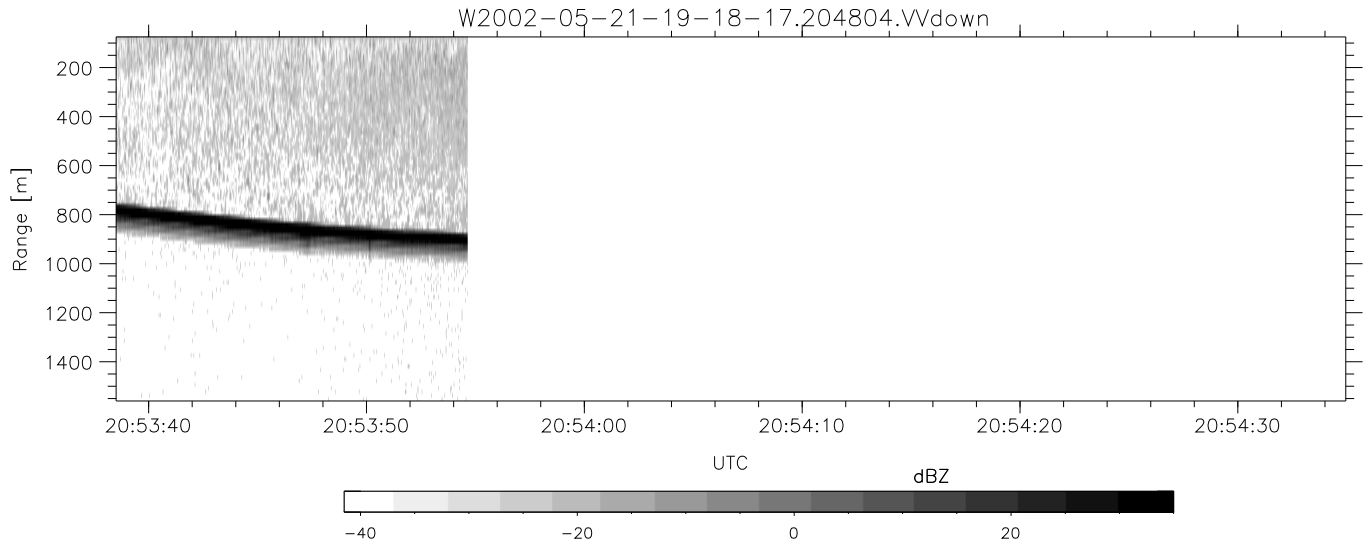
	Min	Max	Mean	Std	Varc%
hhN(dB)	-66.89	-63.45	-65.06	-75.08	10.0
vvN(dB)	-66.55	-63.24	-64.79	-74.85	9.9
hhL(dB)	-23.13	-4.79	-10.91	-15.79	32.5
vvL(dB)	-30.45	-12.51	-14.84	-20.19	29.2
ppN(m/s)	-11.97	12.71	0.30	4.19	
ppT(m/s)	-94.59	100.40	2.36	33.09	
hh/vv(dB)	-NaN	59.35	15.85	35.54	9322
vh/hh(dB)	-NaN	-28.71	-34.93	-35.22	93.5
hv/vv(dB)	-NaN	-34.11	-53.22	-45.74	560.
hnjmp(dB)	-2.11	2.24	0.16	-8.49	13.7
vnjmp(dB)	-2.38	2.68	0.14	-8.38	14.0



IHOP 2002 (dual-antenna config, modes 1,3,4,7) Data (cal: 49.0,50.0)

W2002-05-21-19-18-17 - PPMAG4
 IRIG:1,UTC: 19:18:06.47 to 20:53:54.62, Dur: 5748s
 TimeLngth: 5748.15s, TimeInt: 30ms (32.7pps)
 TimeCor=-13.0s, DSPDif[ms]: mn=30,mx-min=222
 PPS(min,max,std): 28,36,2.01
 Prof: 112 to 188351, NumProf(t/r): 188239/11524
 ProcTime/Recs: 20:48:04-20:53:54/176715-188238
 MxACQtime: 33ms; DRate: 183.3KB/s; Flags: 0, 0, 0
 Pulse: 275ns, IFilt: 5.0MHz; ppPol: HH HV VV
 TxPol: HHVV, PRF: 20 10 20 10 kHz
 Range: Delay 75m, Spacing 15m, Gates 100
 Ave. Pulses: 84, Rng/Prof Aspect@90m/s: 5.5

	Min	Max	Mean	Std	Varc%
hhN(dB)	-66.89	-63.45	-65.06	-75.08	10.0
vvN(dB)	-66.55	-63.24	-64.79	-74.85	9.9
hhL(dB)	-23.13	-4.79	-10.91	-15.79	32.5
vvL(dB)	-30.45	-12.51	-14.84	-20.19	29.2
ppN(m/s)	-11.97	12.71	0.30	4.19	
ppT(m/s)	-94.59	100.40	2.36	33.09	
hh/vv(dB)	-NaN	59.35	15.85	35.54	9322
vh/hh(dB)	-NaN	-28.71	-34.93	-35.22	93.5
hv/vv(dB)	-NaN	-34.11	-53.22	-45.74	560.
hnjmp(dB)	-2.11	2.24	0.16	-8.49	13.7
vnjmp(dB)	-2.38	2.68	0.14	-8.38	14.0



IHOP 2002 (dual-antenna config, modes 1,3,4,7) Data (cal: 49.0,50.0)

W2002-05-21-19-18-17 - PPMAG4
 IRIG:1,UTC: 19:18:06.47 to 20:53:54.62, Dur: 5748s
 TimeLngth: 5748.15s, TimeInt: 30ms (32.7pps)
 TimeCor=-13.0s, DSPDif[ms]: mn=30,mx-min=222
 PPS(min,max,std): 28,36,2.01
 Prof: 112 to 188351, NumProf(t/r): 188239/11524
 ProcTime/Recs: 20:48:04-20:53:54/176715-188238
 MxACQtime: 33ms; DRate: 183.3KB/s; Flags: 0, 0, 0
 Pulse: 275ns, IFilt: 5.0MHz; ppPol: HH HV VV
 TxPol: HHVV, PRF: 20 10 20 10 kHz
 Range: Delay 75m, Spacing 15m, Gates 100
 Ave. Pulses: 84, Rng/Prof Aspect@90m/s: 5.5

	Min	Max	Mean	Std	Varc%
hhN(dB)	-66.89	-63.45	-65.06	-75.08	10.0
vvN(dB)	-66.55	-63.24	-64.79	-74.85	9.9
hhL(dB)	-23.13	-4.79	-10.91	-15.79	32.5
vvL(dB)	-30.45	-12.51	-14.84	-20.19	29.2
ppN(m/s)	-11.97	12.71	0.30	4.19	
ppT(m/s)	-94.59	100.40	2.36	33.09	
hh/vv(dB)	-NaN	59.35	15.85	35.54	9322
vh/hh(dB)	-NaN	-28.71	-34.93	-35.22	93.5
hv/vv(dB)	-NaN	-34.11	-53.22	-45.74	560.
hnjmp(dB)	-2.11	2.24	0.16	-8.49	13.7
vnjmp(dB)	-2.38	2.68	0.14	-8.38	14.0