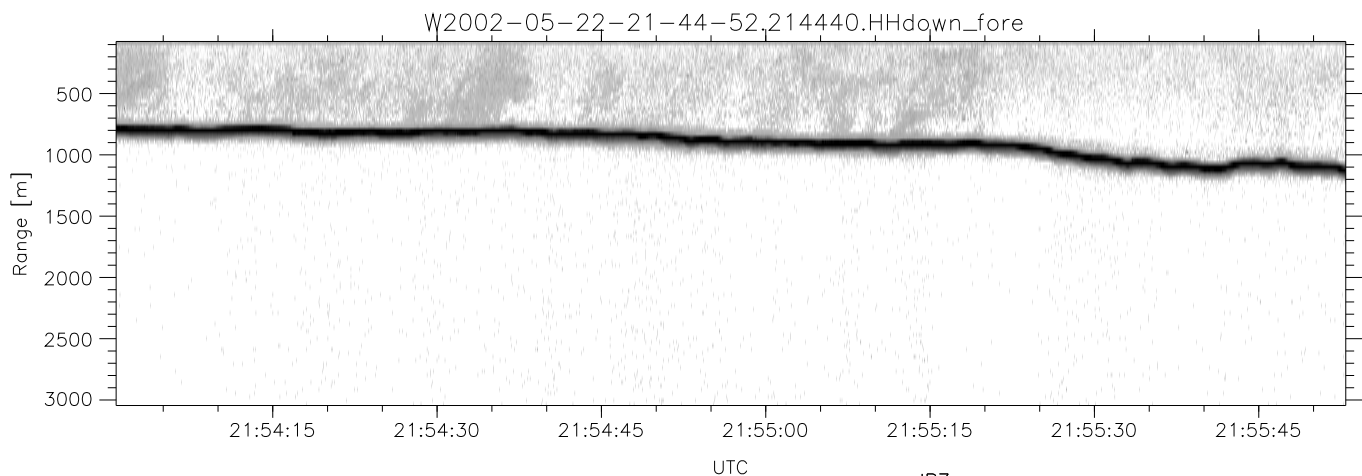
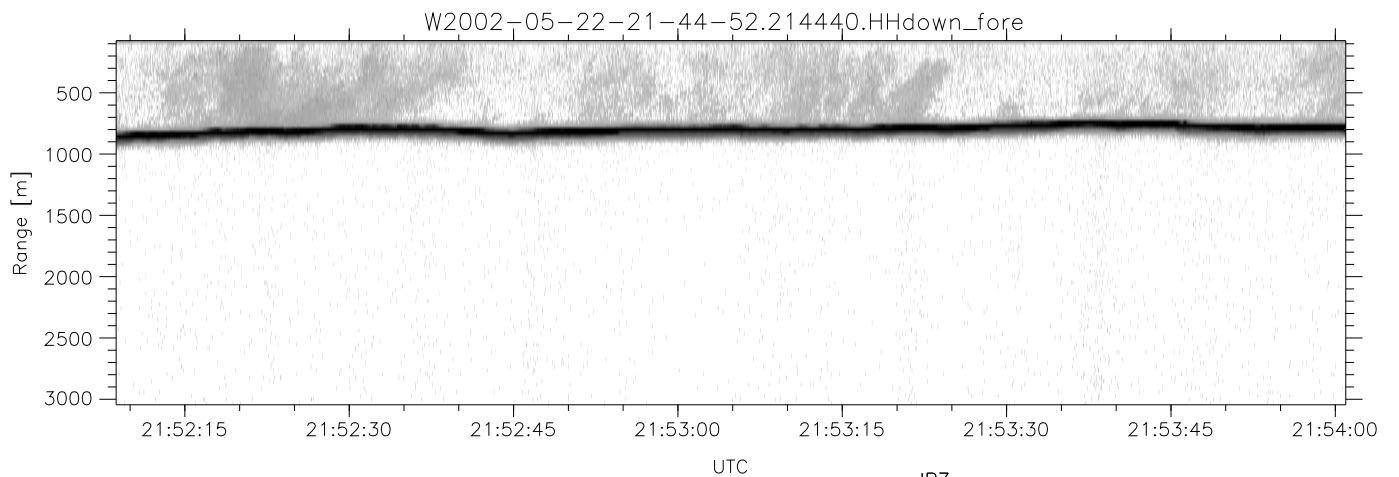
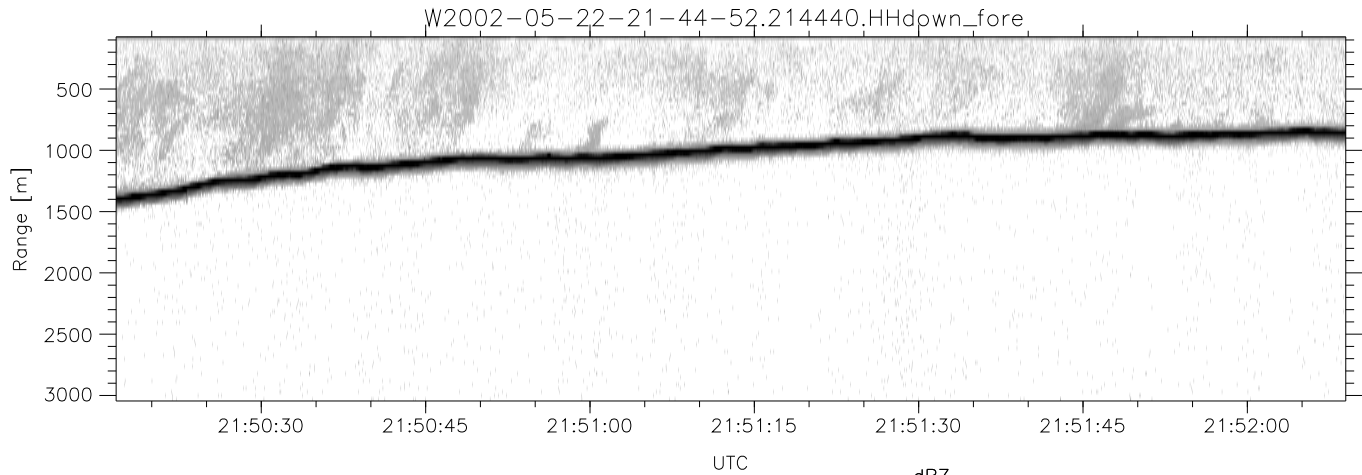


IHOP 2002 (dual-antenna config, modes 1,3,4,7) Data (cal: 55.0,50.0)

W2002-05-22-21-44-52 - PPMAG4
 IRIG:1,UTC: 21:44:40.06 to 22:13:53.86, Dur: 1753s
 TimeLngth: 1753.80s, TimeInt: 29ms (34.1pps)
 TimeCor=-13.0s, DSPDif[ms]: mn=29,mx-min=379
 PPS(min,max,std): 8,36,2.11
 Prof: 414 to 60305, NumProf(t/r): 59891/34138
 ProcTime/Recs: 21:44:40-22:01:17/0-34137
 MxACQtime: 33ms; DRate: 191.2KB/s; Flags: 0, 0, 0
 Pulse: 275ns, IFfilt: 5.0MHz; ppPol: HH HV VV
 TxPol: HHVV, PRF: 20 10 20 10 kHz
 Range: Delay 75m, Spacing 30m, Gates 100
 Ave. Pulses: 84, Rng/Prof Aspect@90m/s: 11.4

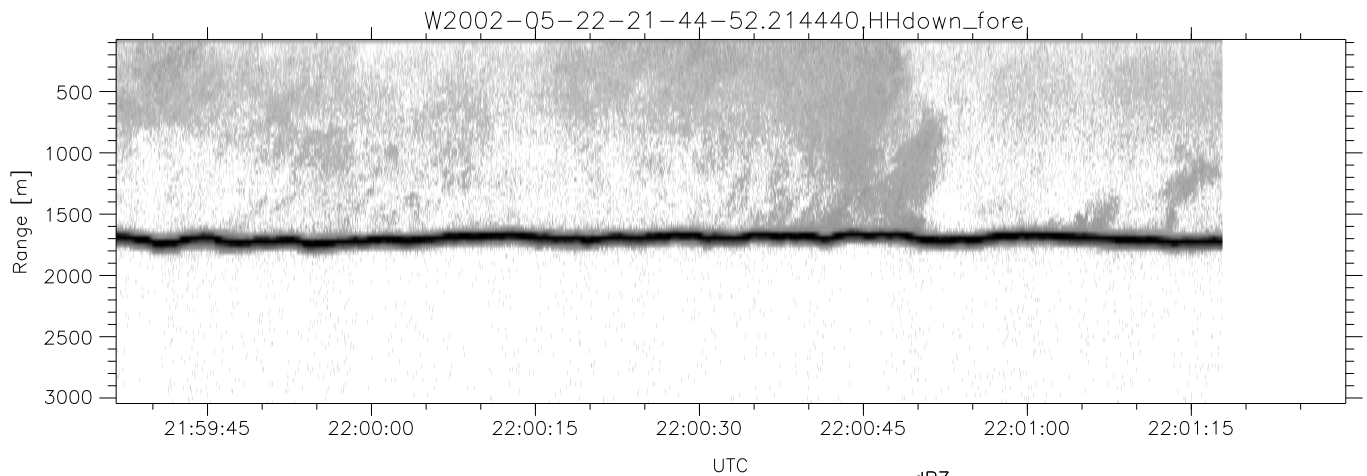
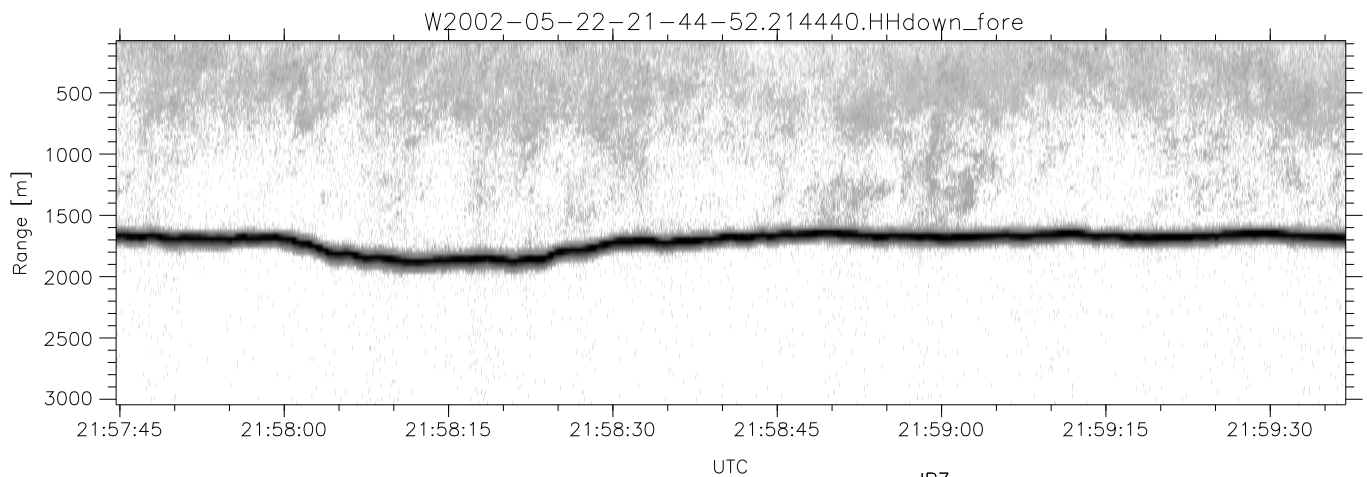
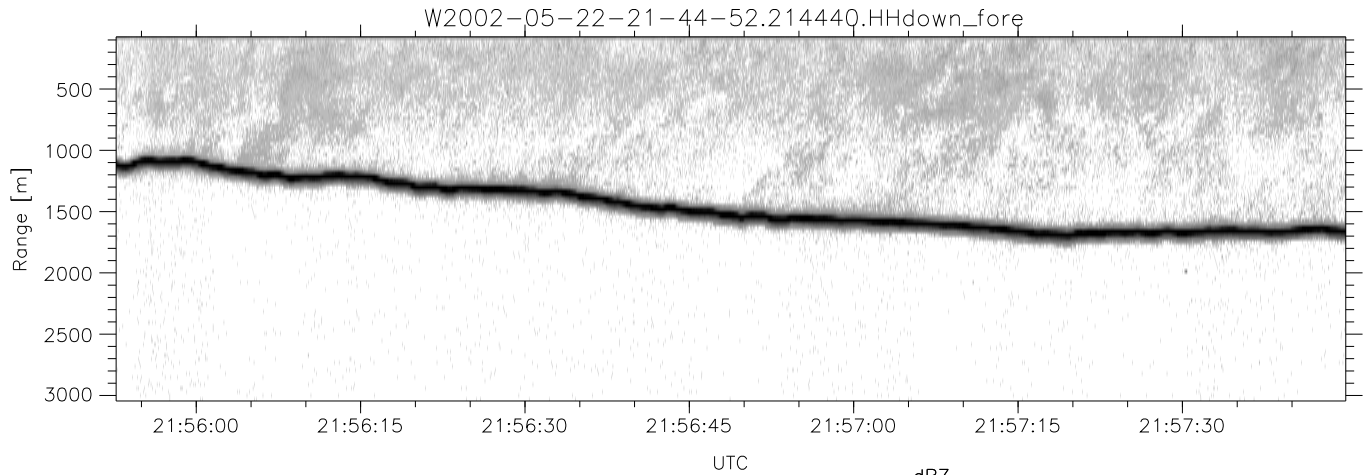
	Min	Max	Mean	Std	Varc%
hhN(dB)	-66.13	-62.60	-64.46	-74.59	9.7
vvN(dB)	-66.45	-62.88	-64.57	-74.66	9.8
hhL(dB)	-20.60	-3.82	-8.10	-11.12	49.9
vvL(dB)	-33.56	-7.46	-12.81	-14.32	70.6
ppN(m/s)	-12.75	12.35	-0.01	4.17	
ppT(m/s)	-100.7	97.58	-0.10	32.95	
hh/vv(dB)	-NaN	98.79	42.75	77.41	2922
vh/hh(dB)	-NaN	-29.32	-47.82	-39.88	622.
hv/vv(dB)	-NaN	-32.88	-49.30	-43.67	366.
hh/vv(dB)	-2.75	2.42	-0.06	-8.72	13.6
vv/vv(dB)	-2.91	2.35	-0.05	-8.65	13.8



IHOP 2002 (dual-antenna config, modes 1,3,4,7) Data (cal: 55.0,50.0)

W2002-05-22-21-44-52 - PPMAG4
 IRIG:1,UTC: 21:44:40.06 to 22:13:53.86, Dur: 1753s
 TimeLngth: 1753.80s, TimeInt: 29ms (34.1pps)
 TimeCor=-13.0s, DSPDif[ms]: mn=29,mx-min=379
 PPS(min,max,std): 8,36,2.11
 Prof: 414 to 60305, NumProf(t/r): 59891/34138
 ProcTime/Recs: 21:44:40-22:01:17/0-34137
 MxAcQtime: 33ms; DRate: 191.2KB/s; Flags: 0, 0, 0
 Pulse: 275ns, IFilt: 5.0MHz; ppPol: HH HV VV
 TxPol: HHVV, PRF: 20 10 20 10 kHz
 Range: Delay 75m, Spacing 30m, Gates 100
 Ave. Pulses: 84, Rng/Prof Aspect@90m/s: 11.4

	Min	Max	Mean	Std	Varc%
hhN(dB)	-66.13	-62.60	-64.46	-74.59	9.7
vvN(dB)	-66.45	-62.88	-64.57	-74.66	9.8
hhL(dB)	-20.60	-3.82	-8.10	-11.12	49.9
vvL(dB)	-33.56	-7.46	-12.81	-14.32	70.6
ppN(m/s)	-12.75	12.35	-0.01	4.17	
ppT(m/s)	-100.7	97.58	-0.10	32.95	
hh/vv(dB)	-NaN	98.79	42.75	77.41	2922
vh/hh(dB)	-NaN	-29.32	-47.82	-39.88	622.
hv/vv(dB)	-NaN	-32.88	-49.30	-43.67	366.
hnjmp(dB)	-2.75	2.42	-0.06	-8.72	13.6
vnjmp(dB)	-2.91	2.35	-0.05	-8.65	13.8



IHOP 2002 (dual-antenna config, modes 1,3,4,7) Data (cal: 55.0,50.0)

W2002-05-22-21-44-52 - PPMAG4
 IRIG:1,UTC: 21:44:40.06 to 22:13:53.86, Dur: 1753s
 TimeLngth: 1753.80s, TimeInt: 29ms (34.1pps)
 TimeCor=-13.0s, DSPDif[ms]: mn=29,mx=-min=379
 PPS(min,max,std): 8,36,2.11
 Prof: 414 to 60305, NumProf(t/r): 59891/34138
 ProcTime/Recs: 21:44:40-22:01:17/0-34137
 MxACQtime: 33ms; DRate: 191.2KB/s; Flags: 0, 0, 0
 Pulse: 275ns, IFilt: 5.0MHz; ppPol: HH HV VV
 TxPol: HHVV, PRF: 20 10 20 10 kHz
 Range: Delay 75m, Spacing 30m, Gates 100
 Ave. Pulses: 84, Rng/Prof Aspect@90m/s: 11.4

	Min	Max	Mean	Std	Varc%
hhN(dB)	-66.13	-62.60	-64.46	-74.59	9.7
vvN(dB)	-66.45	-62.88	-64.57	-74.66	9.8
hhL(dB)	-20.60	-3.82	-8.10	-11.12	49.9
vvL(dB)	-33.56	-7.46	-12.81	-14.32	70.6
ppN(m/s)	-12.75	12.35	-0.01	4.17	
ppT(m/s)	-100.7	97.58	-0.10	32.95	
hh/vv(dB)	-NaN	98.79	42.75	77.41	2922
vh/hh(dB)	-NaN	-29.32	-47.82	-39.88	622.
hv/vv(dB)	-NaN	-32.88	-49.30	-43.67	366.
hh_jmp(dB)	-2.75	2.42	-0.06	-8.72	13.6
vv_jmp(dB)	-2.91	2.35	-0.05	-8.65	13.8