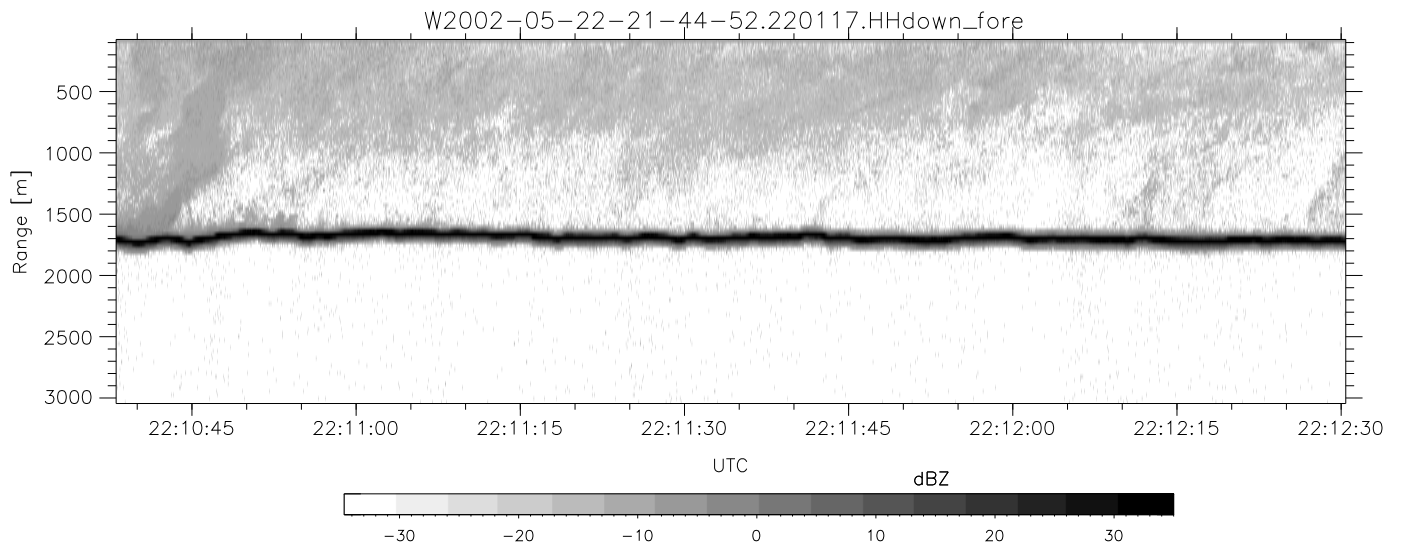
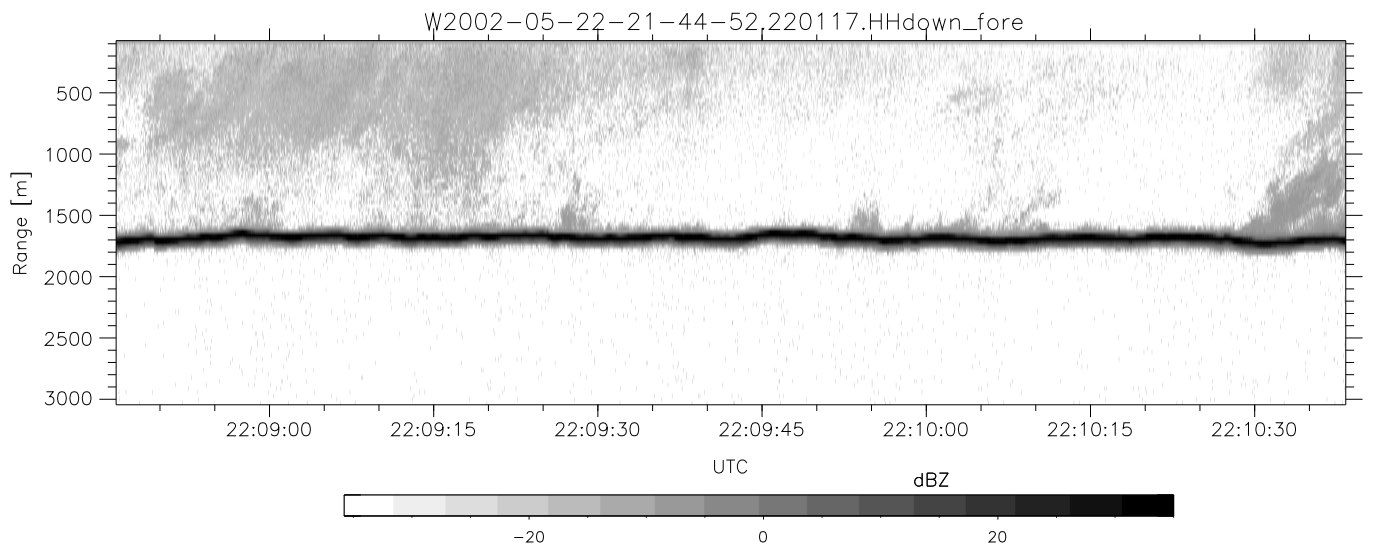
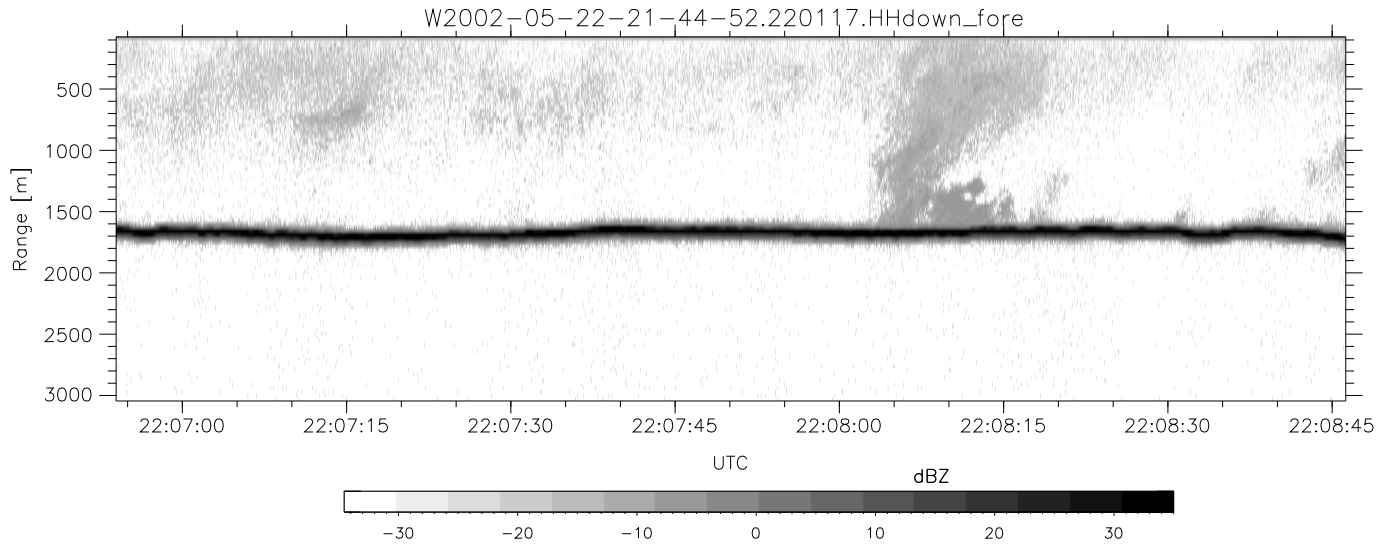


IHOP 2002 (dual-antenna config, modes 1,3,4,7) Data (cal: 55.0,50.0)

W2002-05-22-21-44-52 - PPMAG4  
 IRIG:1,UTC: 21:44:40.06 to 22:13:53.86, Dur: 1753s  
 TimeLngth: 1753.80s, TimeInt: 29ms (34.1pps)  
 TimeCor=-13.0s, DSPDif[ms]: mn=29,mx-min=283  
 PPS(min,max,std): 17,36,2.40  
 Prof: 414 to 60305, NumProf(t/r): 59891/25753  
 ProcTime/Recs: 22:01:17-22:13:53/34138-59890  
 MxACQtime: 33ms; DRate: 191.2KB/s; Flags: 0, 0, 0  
 Pulse: 275ns, IFilt: 5.0MHz; ppPol: HH HV VV  
 TxPol: HHVV, PRF: 20 10 20 10 kHz  
 Range: Delay 75m, Spacing 30m, Gates 100  
 Ave. Pulses: 84, Rng/Prof Aspect@90m/s: 11.4

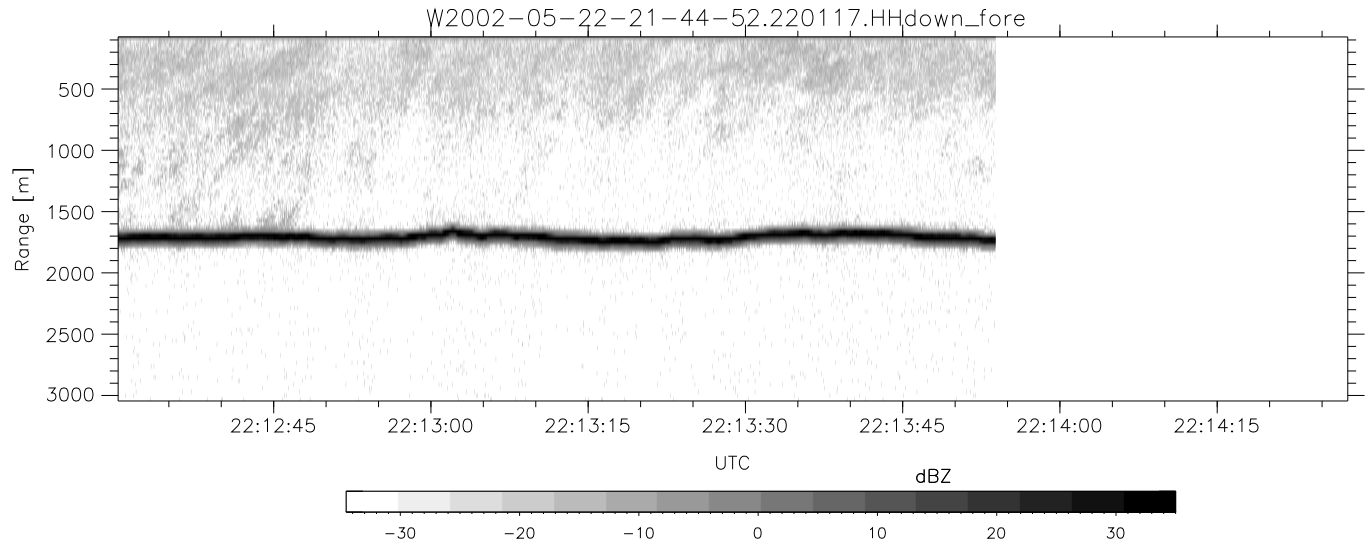
	Min	Max	Mean	Std	Varc%
hhN(dB)	-66.29	-62.76	-64.46	-74.53	9.8
vvN(dB)	-66.32	-62.79	-64.52	-74.55	9.9
hhL(dB)	-11.82	-4.73	-7.21	-15.45	15.0
vvL(dB)	-24.10	-9.81	-11.84	-19.16	18.5
ppN(m/s)	-12.69	12.75	-0.04	4.17	
ppT(m/s)	-100.2	100.70	-0.30	32.92	
hh/vv(dB)	-NaN	109.05	57.15	84.09	4937
vh/hh(dB)	-NaN	-28.73	-49.41	-40.24	827.
hv/vv(dB)	-NaN	-33.32	-52.54	-44.91	578.
hnjmp(dB)	-2.77	2.10	-0.07	-8.70	13.7
vnjmp(dB)	-2.32	2.20	-0.06	-8.64	13.9



IHOP 2002 (dual-antenna config, modes 1,3,4,7) Data (cal: 55.0,50.0)

W2002-05-22-21-44-52 - PPMAG4  
 IRIG:1,UTC: 21:44:40.06 to 22:13:53.86, Dur: 1753s  
 TimeLngth: 1753.80s, TimeInt: 29ms (34.1pps)  
 TimeCor=-13.0s, DSPDif[ms]: mn=29,mx-min=283  
 PPS(min,max,std): 17,36,2.40  
 Prof: 414 to 60305, NumProf(t/r): 59891/25753  
 ProcTime/Recs: 22:01:17-22:13:53/34138-59890  
 MxACQtime: 33ms; DRate: 191.2KB/s; Flags: 0, 0, 0  
 Pulse: 275ns, IFilt: 5.0MHz; ppPol: HH HV VV  
 TxPol: HHVV, PRF: 20 10 20 10 kHz  
 Range: Delay 75m, Spacing 30m, Gates 100  
 Ave. Pulses: 84, Rng/Prof Aspect@90m/s: 11.4

	Min	Max	Mean	Std	Varc%
hhN (dB)	-66.29	-62.76	-64.46	-74.53	9.8
vvN (dB)	-66.32	-62.79	-64.52	-74.55	9.9
hhL (dB)	-11.82	-4.73	-7.21	-15.45	15.0
vvL (dB)	-24.10	-9.81	-11.84	-19.16	18.5
ppN (m/s)	-12.69	12.75	-0.04	4.17	
ppT (m/s)	-100.2	100.70	-0.30	32.92	
hh/vv (dB)	-NaN	109.05	57.15	84.09	4937
vh/hh (dB)	-NaN	-28.73	-49.41	-40.24	827.
hv/vv (dB)	-NaN	-33.32	-52.54	-44.91	578.
hh_jmp (dB)	-2.77	2.10	-0.07	-8.70	13.7
vv_jmp (dB)	-2.32	2.20	-0.06	-8.64	13.9



IHOP 2002 (dual-antenna config, modes 1,3,4,7) Data (cal: 55.0,50.0)

W2002-05-22-21-44-52 - PPMAG4						
IRIG:1,UTC: 21:44:40.06 to 22:13:53.86, Dur: 1753s	hhN (dB)	Min	Max	Mean	Std	Varc%
TimeLngth: 1753.80s, TimeInt: 29ms (34.1pps)	vvN (dB)	-66.32	-62.79	-64.52	-74.53	9.8
TimeCor=-13.0s, DSPDif[ms]: mn=29,mx-min=283	hhL (dB)	-11.82	-4.73	-7.21	-15.45	15.0
PPS(min,max,std): 17,36,2.40	vvL (dB)	-24.10	-9.81	-11.84	-19.16	18.5
Prof: 414 to 60305, NumProf(t/r): 59891/25753	ppN (m/s)	-12.69	12.75	-0.04	4.17	
ProcTime/Recs: 22:01:17-22:13:53/34138-59890	ppT (m/s)	-100.2	100.70	-0.30	32.92	
MxACQtime: 33ms; DRate: 191.2KB/s; Flags: 0, 0, 0	hh/vv (dB)	-NaN	109.05	57.15	84.09	4937
Pulse: 275ns, IFilt: 5.0MHz; ppPol: HH HV VV	vh/hh (dB)	-NaN	-28.73	-49.41	-40.24	827.
TxPol: HHVV, PRF: 20 10 20 10 kHz	hv/vv (dB)	-NaN	-33.32	-52.54	-44.91	578.
Range: Delay 75m, Spacing 30m, Gates 100	hn/jmp (dB)	-2.77	2.10	-0.07	-8.70	13.7
Ave. Pulses: 84, Rng/Prof Aspect@90m/s: 11.4	vn/jmp (dB)	-2.32	2.20	-0.06	-8.64	13.9