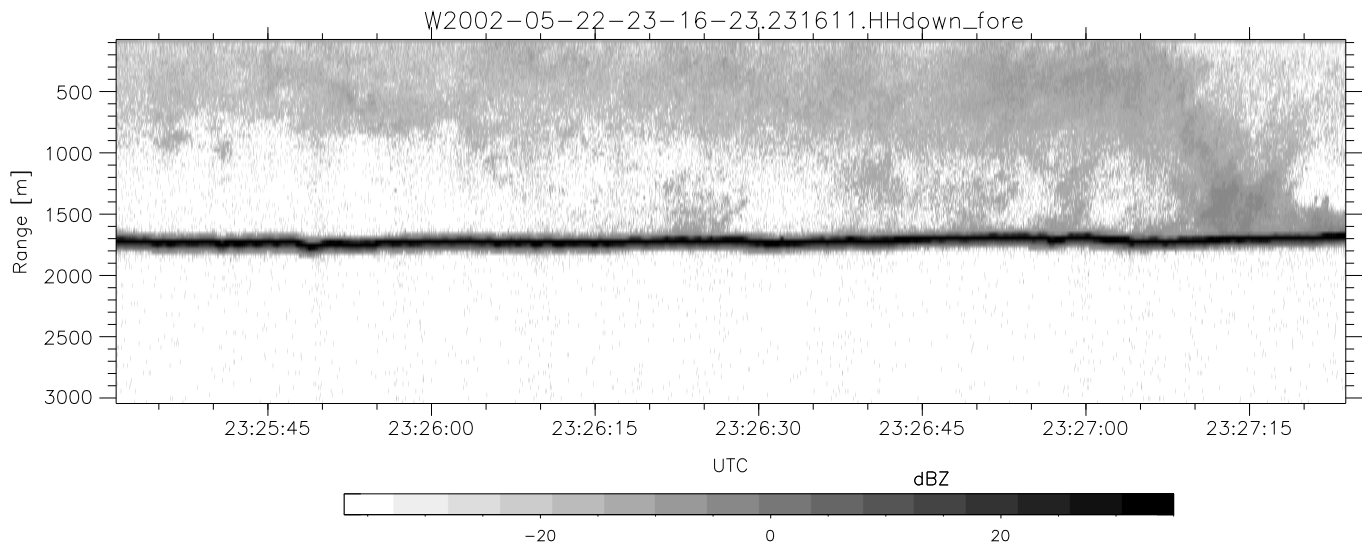
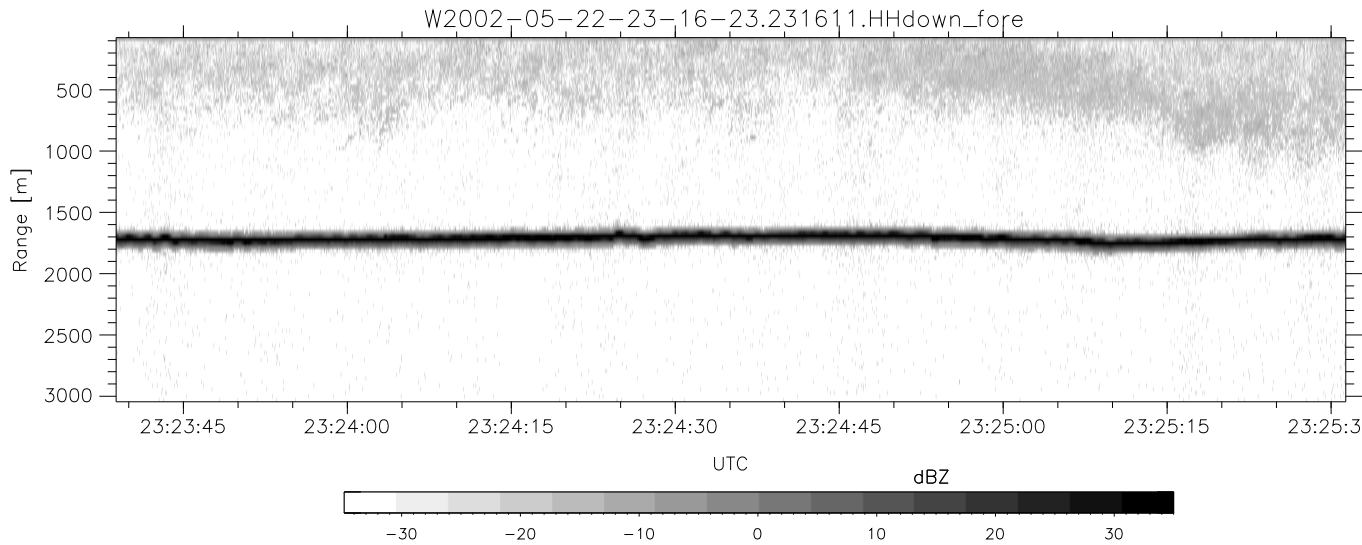
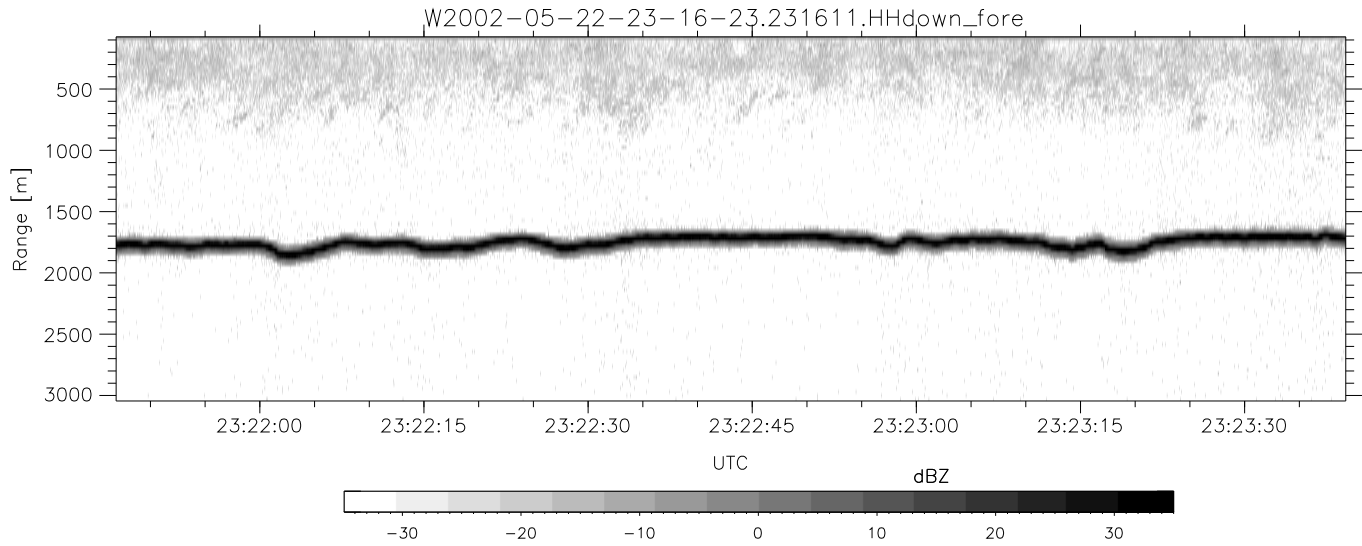


IHOP 2002 (dual-antenna config, modes 1,3,4,7) Data (cal: 55.0,50.0)

W2002-05-22-23-16-23 - PPMAG4  
 IRIG:1,UTC: 23:16:11.21 to 23:41:10.54, Dur: 1499s  
 TimeLngth: 1499.33s, TimeInt: 29ms (33.9pps)  
 TimeCor=-13.0s, DSPDif[ms]: mn=29,mx-min=188  
 PPS(min,max,std): 12,36,2.13  
 Prof: 314 to 51083, NumProf(t/r): 50769/33134  
 ProcTime/Recs: 23:16:11-23:32:28/0-33133  
 MxAcQtime: 33ms; DRate: 189.5KB/s; Flags: 0, 0, 0  
 Pulse: 275ns, IFfilt: 5.0MHz; ppPol: HH HV VV  
 TxPol: HHVV, PRF: 20 10 20 10 kHz  
 Range: Delay 75m, Spacing 30m, Gates 100  
 Ave. Pulses: 84, Rng/Prof Aspect@90m/s: 11.3

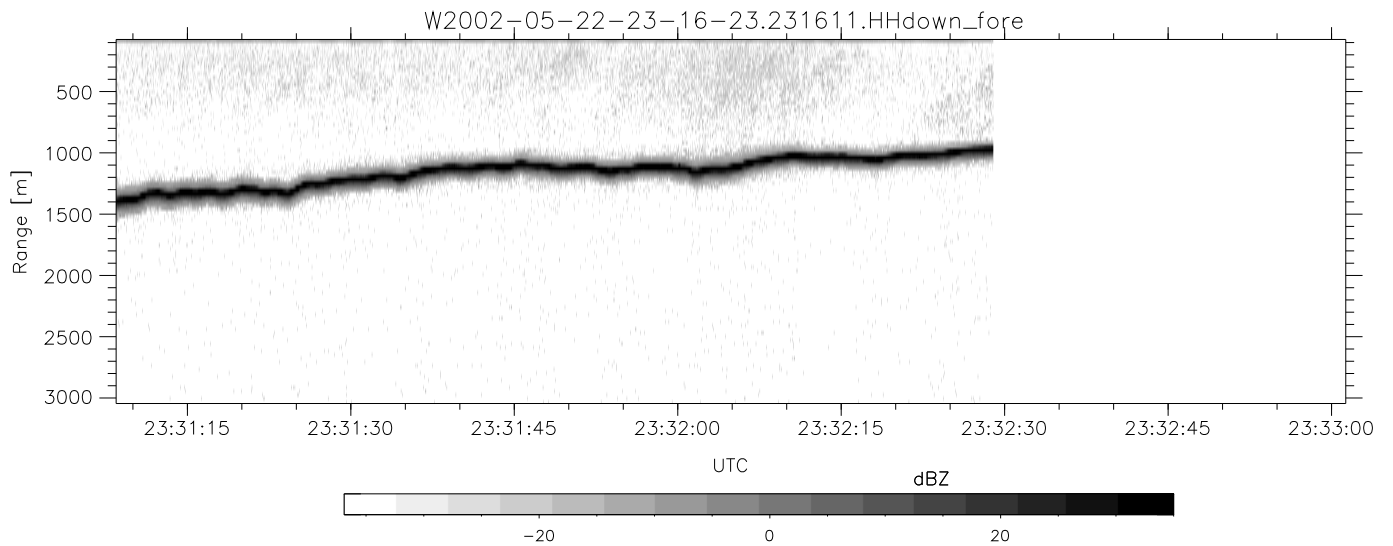
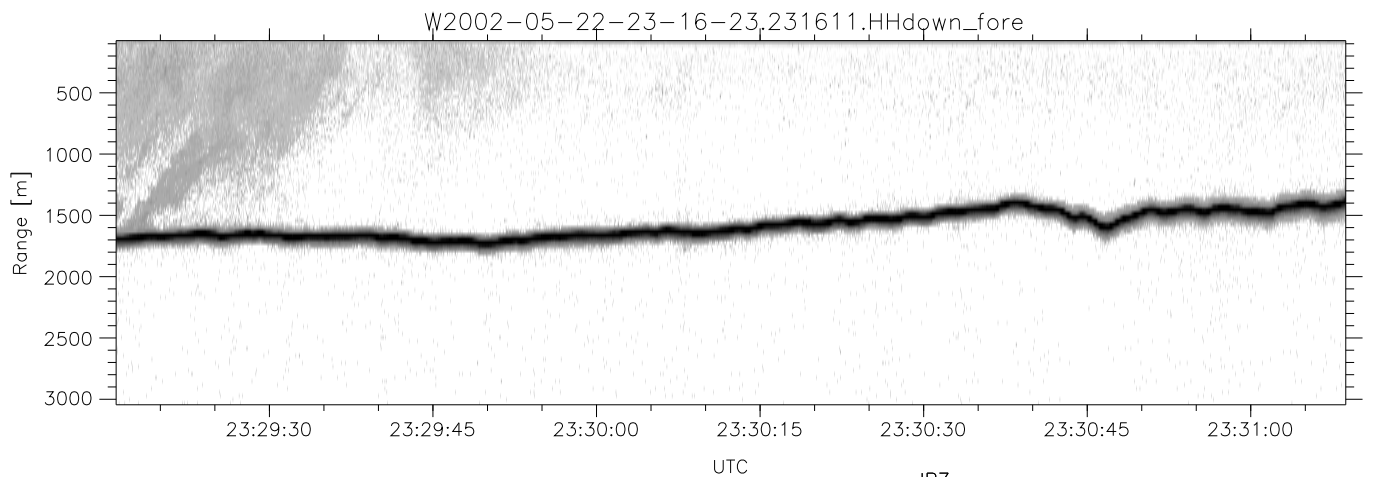
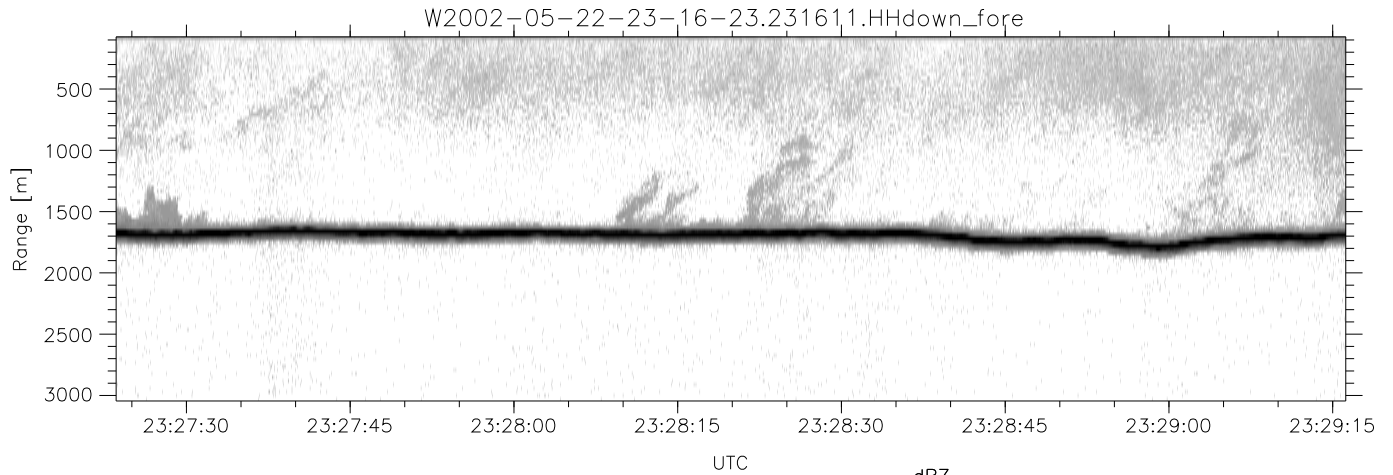
	Min	Max	Mean	Std	Varc%
hhN(dB)	-67.04	-62.50	-65.08	-74.95	10.3
vvN(dB)	-66.95	-63.51	-65.16	-75.16	10.0
hhL(dB)	-21.28	-8.62	-11.04	-17.30	23.7
vvL(dB)	-36.95	-8.60	-11.31	-15.45	38.5
ppN(m/s)	-12.36	12.57	0.10	4.17	
ppT(m/s)	-97.62	99.27	0.76	32.92	
hh/vv(dB)	-NaN	93.10	-NaN	70.96	-758
vh/hh(dB)	-NaN	-29.14	-48.92	-40.78	650.
hv/vv(dB)	-NaN	-33.54	-52.23	-45.86	433.
hnjmp(dB)	-2.78	2.81	-0.07	-8.66	13.9
vnjmp(dB)	-2.41	2.29	-0.07	-8.60	14.0



IHOP 2002 (dual-antenna config, modes 1,3,4,7) Data (cal: 55.0,50.0)

W2002-05-22-23-16-23 - PPMAG4  
 IRIG:1,UTC: 23:16:11.21 to 23:41:10.54, Dur: 1499s  
 TimeLngth: 1499.33s, TimeInt: 29ms (33.9pps)  
 TimeCor=-13.0s, DSPDif[ms]: mn=29,mx-min=188  
 PPS(min,max,std): 12,36,2.13  
 Prof: 314 to 51083, NumProf(t/r): 50769/33134  
 ProcTime/Recs: 23:16:11-23:32:28/0-33133  
 MxACQtime: 33ms; DRate: 189.5KB/s; Flags: 0, 0, 0  
 Pulse: 275ns, IFilt: 5.0MHz; ppPol: HH HV VV  
 TxPol: HHVV, PRF: 20 10 20 10 kHz  
 Range: Delay 75m, Spacing 30m, Gates 100  
 Ave. Pulses: 84, Rng/Prof Aspect@90m/s: 11.3

	Min	Max	Mean	Std	Varc%
hhN(dB)	-67.04	-62.50	-65.08	-74.95	10.3
vvN(dB)	-66.95	-63.51	-65.16	-75.16	10.0
hhL(dB)	-21.28	-8.62	-11.04	-17.30	23.7
vvL(dB)	-36.95	-8.60	-11.31	-15.45	38.5
ppN(m/s)	-12.36	12.57	0.10	4.17	
ppT(m/s)	-97.62	99.27	0.76	32.92	
hh/vv(dB)	-NaN	93.10	-NaN	70.96	-758
vh/hh(dB)	-NaN	-29.14	-48.92	-40.78	650.
hv/vv(dB)	-NaN	-33.54	-52.23	-45.86	433.
hh_jmp(dB)	-2.78	2.81	-0.07	-8.66	13.9
vv_jmp(dB)	-2.41	2.29	-0.07	-8.60	14.0



IHOP 2002 (dual-antenna config, modes 1,3,4,7) Data (cal: 55.0,50.0)

W2002-05-22-23-16-23 - PPMAG4  
 IRIG:1,UTC: 23:16:11.21 to 23:41:10.54, Dur: 1499s  
 TimeLngth: 1499.33s, TimeInt: 29ms (33.9pps)  
 TimeCor=-13.0s, DSPDif[ms]: mn=29,mx=-min=188  
 PPS(min,max,std): 12,36,2.13  
 Prof: 314 to 51083, NumProf(t/r): 50769/33134  
 ProcTime/Recs: 23:16:11-23:32:28/0-33133  
 MxAcQtime: 33ms; DRate: 189.5KB/s; Flags: 0, 0, 0  
 Pulse: 275ns, IFilt: 5.0MHz; ppPol: HH HV VV  
 TxPol: HHVV, PRF: 20 10 20 10 kHz  
 Range: Delay 75m, Spacing 30m, Gates 100  
 Ave. Pulses: 84, Rng/Prof Aspect@90m/s: 11.3

	Min	Max	Mean	Std	Varc%
hhN(dB)	-67.04	-62.50	-65.08	-74.95	10.3
vvN(dB)	-66.95	-63.51	-65.16	-75.16	10.0
hhL(dB)	-21.28	-8.62	-11.04	-17.30	23.7
vvL(dB)	-36.95	-8.60	-11.31	-15.45	38.5
ppN(m/s)	-12.36	12.57	0.10	4.17	
ppT(m/s)	-97.62	99.27	0.76	32.92	
hh/vv(dB)	-NaN	93.10	-NaN	70.96	-758
vh/hh(dB)	-NaN	-29.14	-48.92	-40.78	650.
hv/vv(dB)	-NaN	-33.54	-52.23	-45.86	433.
hnjmp(dB)	-2.78	2.81	-0.07	-8.66	13.9
vnjmp(dB)	-2.41	2.29	-0.07	-8.60	14.0