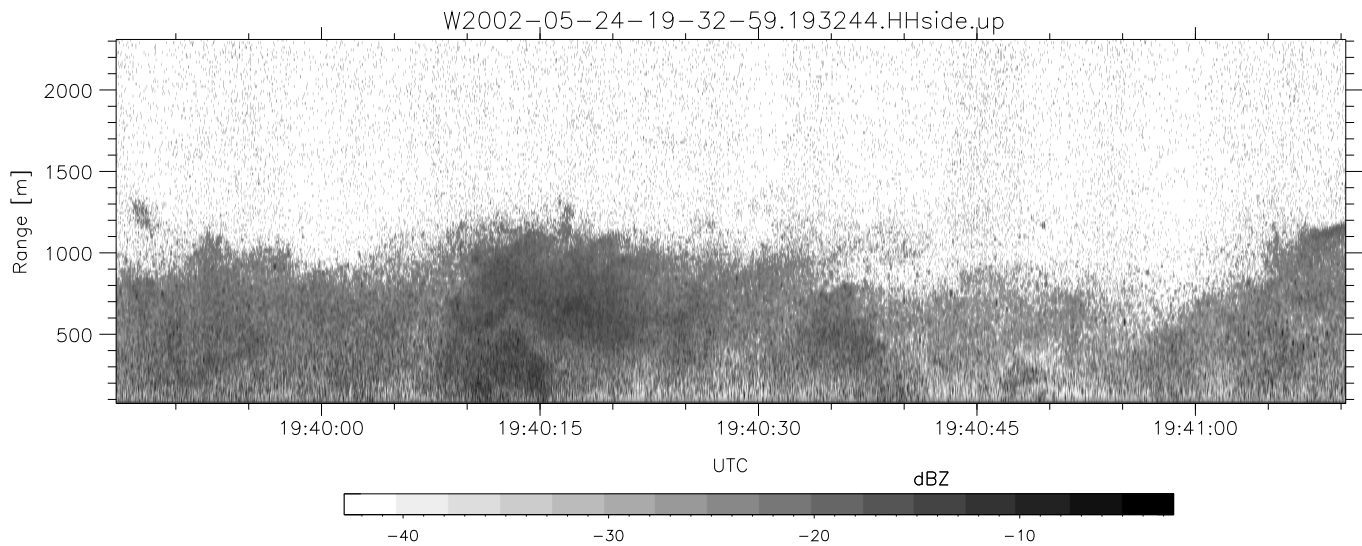
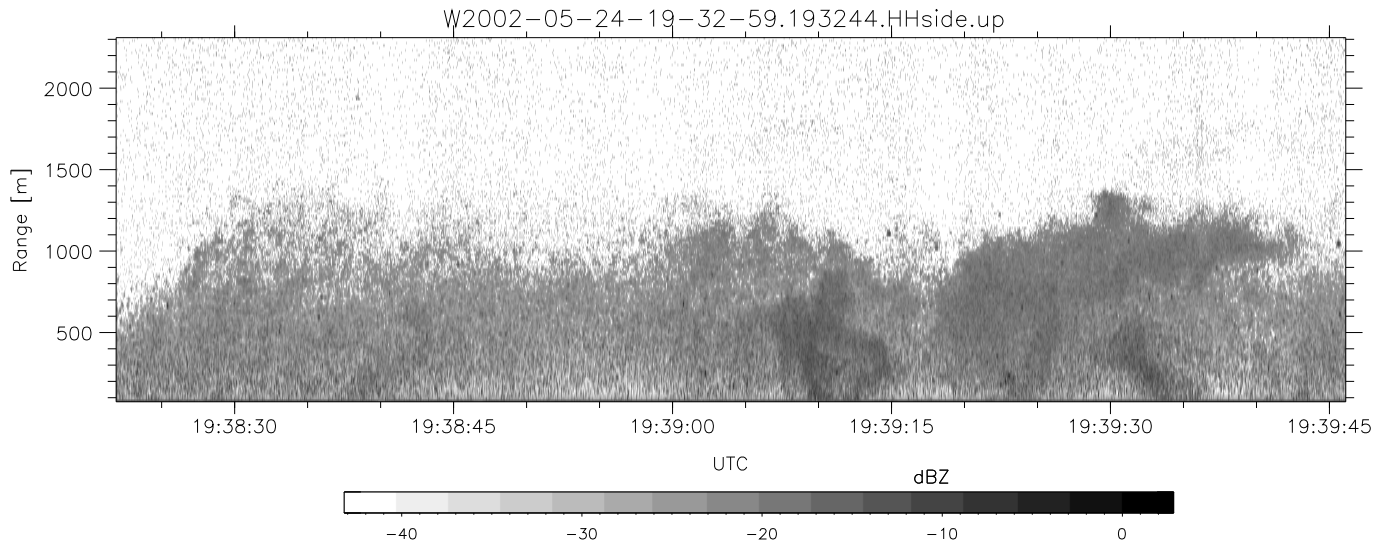
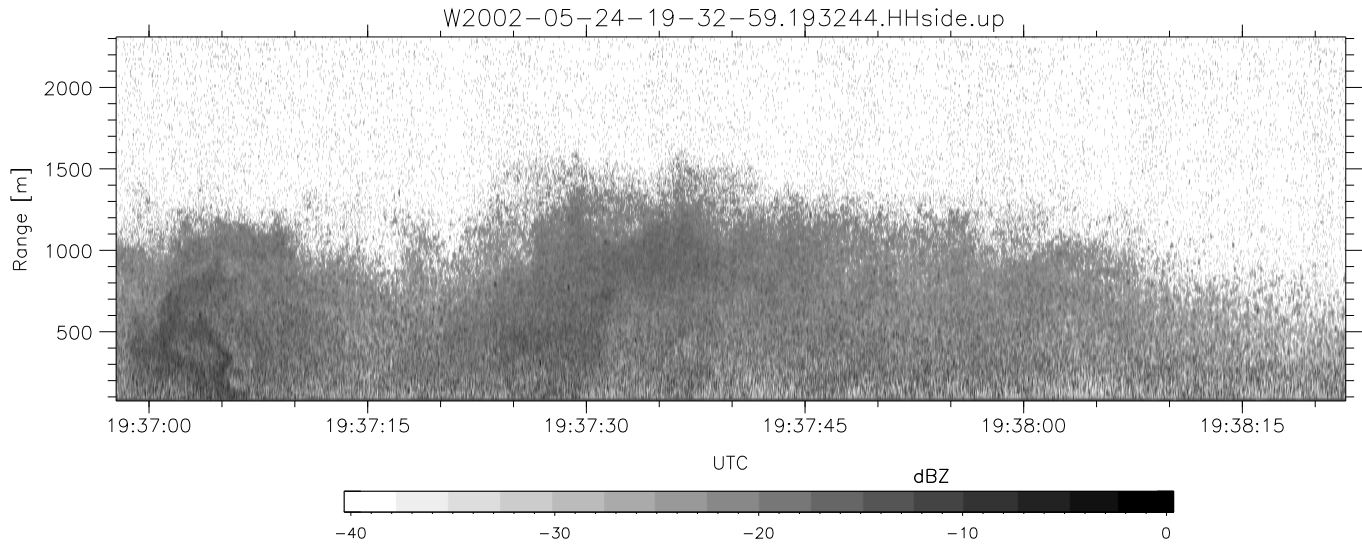


IHOP 2002 (dual-antenna config, modes 1,3,4,7) Data (cal: 49.0,50.0)

W2002-05-24-19-32-59 - SPPMAG  
 IRIG:1,UTC: 19:32:44.61 to 19:51:39.89, Dur: 1135s  
 TimeLngth: 1135.28s, TimeInt: 25ms (39.8pps)  
 TimeCor=-13.0s, DSPDif(mn,mx,min):24,20,532  
 PPS(min,max,std): 21,42,2.19  
 Prof: 128 to 45316, NumProf(t/r): 45188/29369  
 ProcTime/Recs: 19:32:44-19:45:02/0-29368  
 MxACQtime: 17ms; DRate: 95.3KB/s; Flags: 0, 0, 0  
 Pulse: 275ns, IFfilt: 5.0MHz; ppPol: HH  
 TxPol: H, PRF: 20 kHz  
 Range: Delay 75m, Spacing 15m, Gates 150  
 Ave. Pulses: 348, Rng/Prof Aspect@90m/s: 6.6

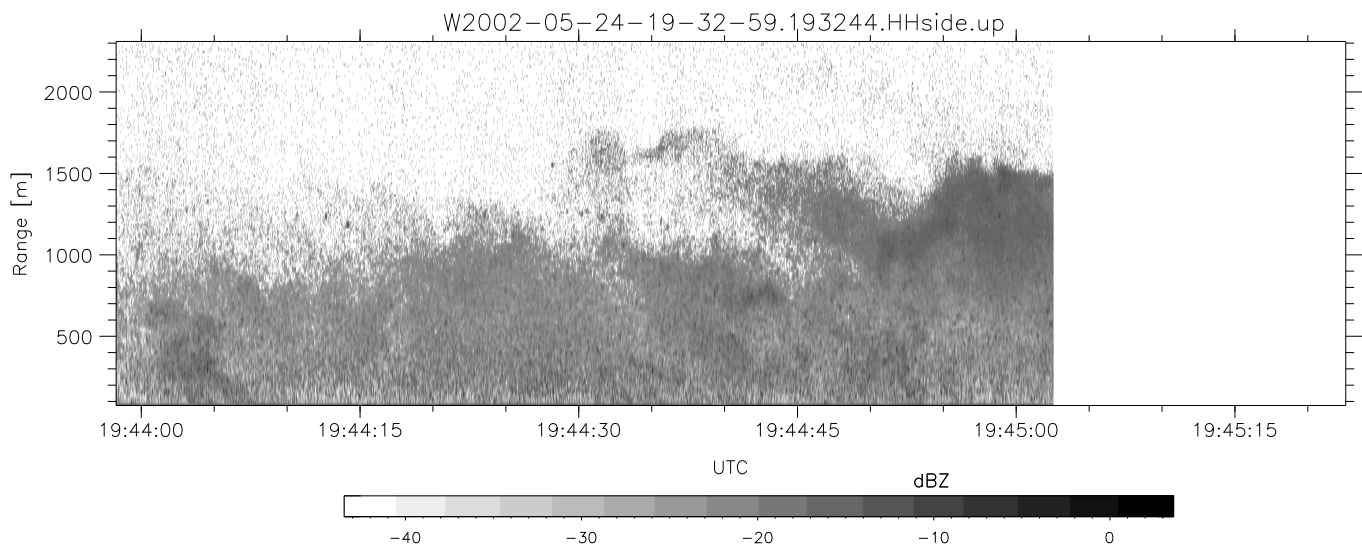
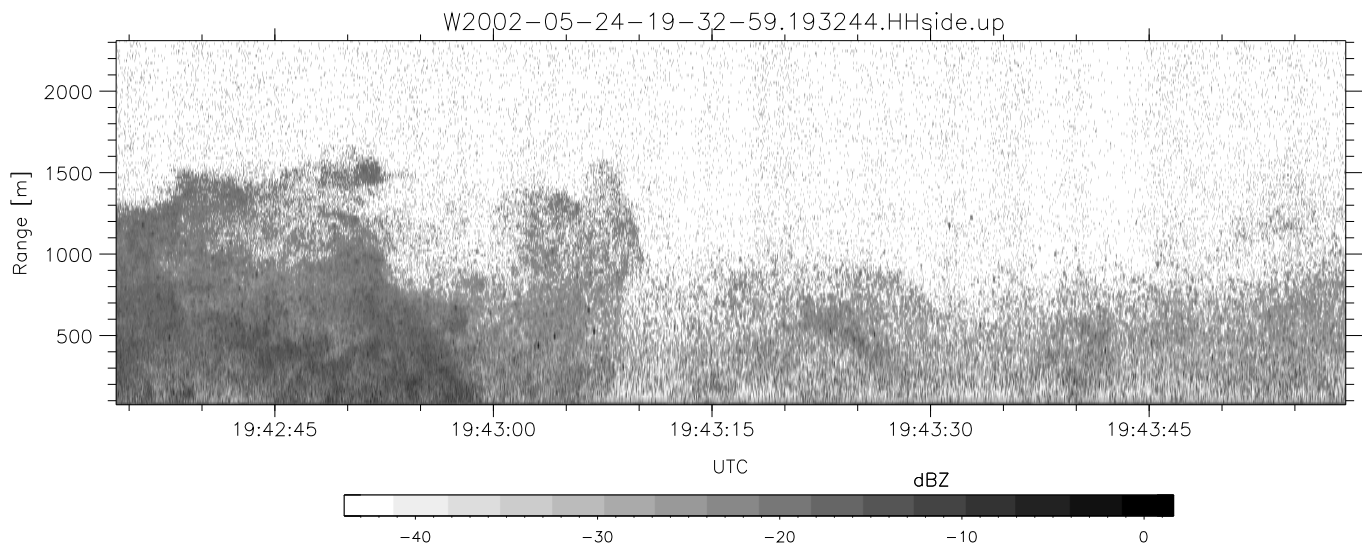
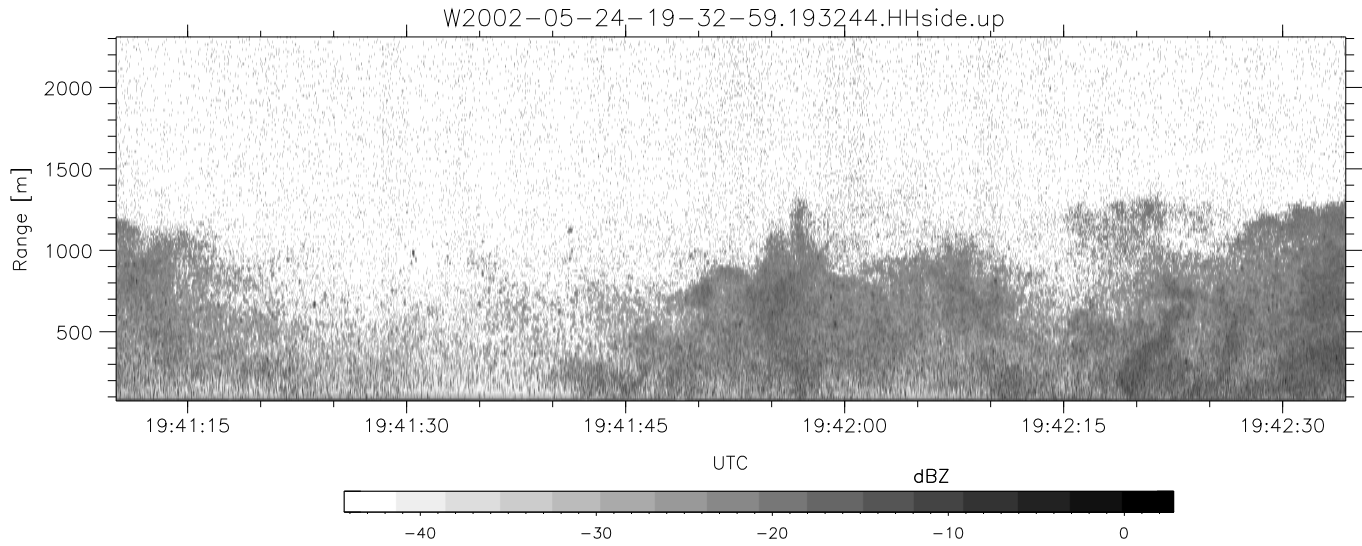
	Min	Max	Mean	Std	Varc%
hhN(dB)	-65.59	-63.86	-64.74	-77.81	4.9
vvN(dB)	-65.48	-63.71	-64.56	-77.66	4.9
hhL(dB)	-21.08	-3.26	-6.76	-12.66	25.8
vhL(dB)	-30.95	-4.87	-8.85	-14.27	28.7
ppN(m/s)	-15.80	15.80	0.03	9.04	
ppT(m/s)	-0.03	0.03	-0.00	0.00	
vh/hh(dB)	-NaN	-3.51	-31.86	-20.71	1302
hnjmp(dB)	-1.27	1.12	-0.10	-11.85	6.7
vnjmp(dB)	-1.20	0.98	-0.09	-11.81	6.7



IHOP 2002 (dual-antenna config, modes 1,3,4,7) Data (cal: 49.0,50.0)

W2002-05-24-19-32-59 - SPPMAG  
 IRIG:1,UTC: 19:32:44.61 to 19:51:39.89, Dur: 1135s  
 TimeLngth: 1135.28s, TimeInt: 25ms (39.8pps)  
 TimeCor=-13.0s, DSPDif(mn,mx,min):24,20,532  
 PPS(min,max,std): 21,42,2.19  
 Prof: 128 to 45316, NumProf(t/r): 45188/29369  
 ProcTime/Recs: 19:32:44-19:45:02/0-29368  
 MxACQtime: 17ms; DRate: 95.3KB/s; Flags: 0, 0, 0  
 Pulse: 275ns, IFfilt: 5.0MHz; ppPol: HH  
 TxPol: H, PRF: 20 kHz  
 Range: Delay 75m, Spacing 15m, Gates 150  
 Ave. Pulses: 348, Rng/Prof Aspect@90m/s: 6.6

	Min	Max	Mean	Std	Varc%
hhN(dB)	-65.59	-63.86	-64.74	-77.81	4.9
vvN(dB)	-65.48	-63.71	-64.56	-77.66	4.9
hhL(dB)	-21.08	-3.26	-6.76	-12.66	25.8
vhL(dB)	-30.95	-4.87	-8.85	-14.27	28.7
ppN(m/s)	-15.80	15.80	0.03	9.04	
ppT(m/s)	-0.03	0.03	-0.00	0.00	
vh/hh(dB)	-NaN	-3.51	-31.86	-20.71	1302
hnjmp(dB)	-1.27	1.12	-0.10	-11.85	6.7
vnjmp(dB)	-1.20	0.98	-0.09	-11.81	6.7



IHOP 2002 (dual-antenna config, modes 1,3,4,7) Data (cal: 49.0,50.0)

W2002-05-24-19-32-59 - SPPMAG	Min	Max	Mean	Std	Varc%	
IRIG:1,UTC: 19:32:44.61 to 19:51:39.89, Dur: 1135s	hhN (dB)	-65.59	-63.86	-64.74	-77.81	4.9
TimeLngth: 1135.28s, TimeInt: 25ms (39.8pps)	vvN (dB)	-65.48	-63.71	-64.56	-77.66	4.9
TimeCor=-13.0s, DSPDif(mn,mx,min):24,20,532	hhL (dB)	-21.08	-3.26	-6.76	-12.66	25.8
PPS(min,max,std): 21,42,2.19	vhL (dB)	-30.95	-4.87	-8.85	-14.27	28.7
Prof: 128 to 45316, NumProf(t/r): 45188/29369	ppN(m/s)	-15.80	15.80	0.03	9.04	
ProcTime/Recs: 19:32:44-19:45:02/0-29368	ppT(m/s)	-0.03	0.03	-0.00	0.00	
MxACQtime: 17ms; DRate: 95.3KB/s; Flags: 0, 0, 0	vh/hh (dB)	-NaN	-3.51	-31.86	-20.71	1302
Pulse: 275ns, IFfilt: 5.0MHz; ppPol: HH	hn_jmp (dB)	-1.27	1.12	-0.10	-11.85	6.7
TxPol: H, PRF: 20 kHz	vn_jmp (dB)	-1.20	0.98	-0.09	-11.81	6.7
Range: Delay 75m, Spacing 15m, Gates 150						
Ave. Pulses: 348, Rng/Prof Aspect@90m/s: 6.6						