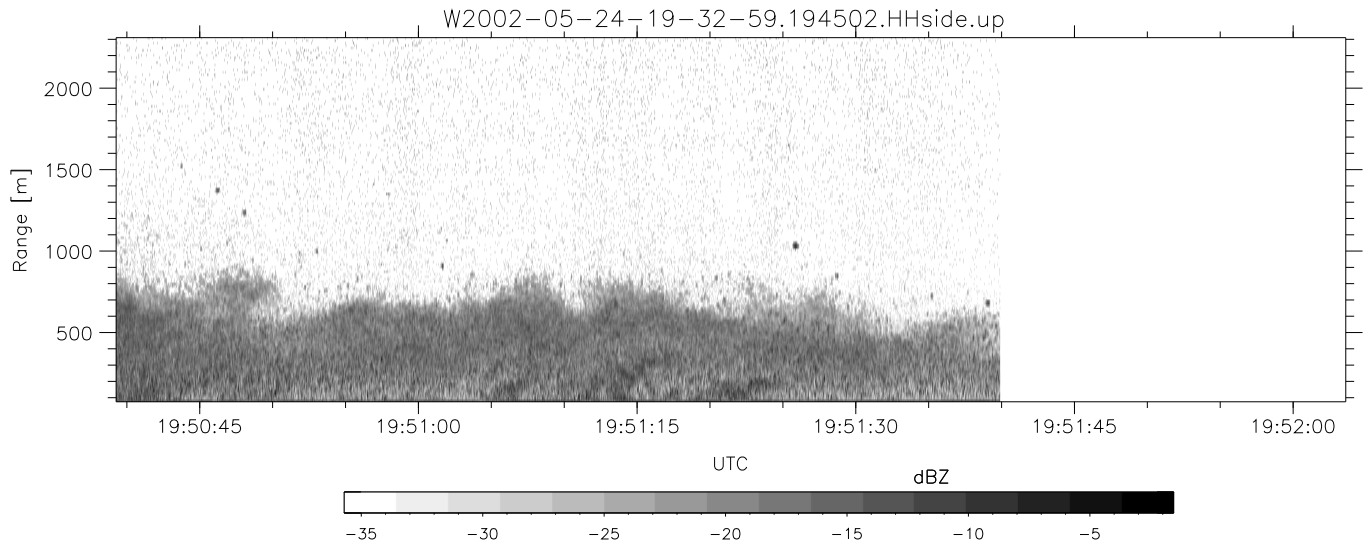
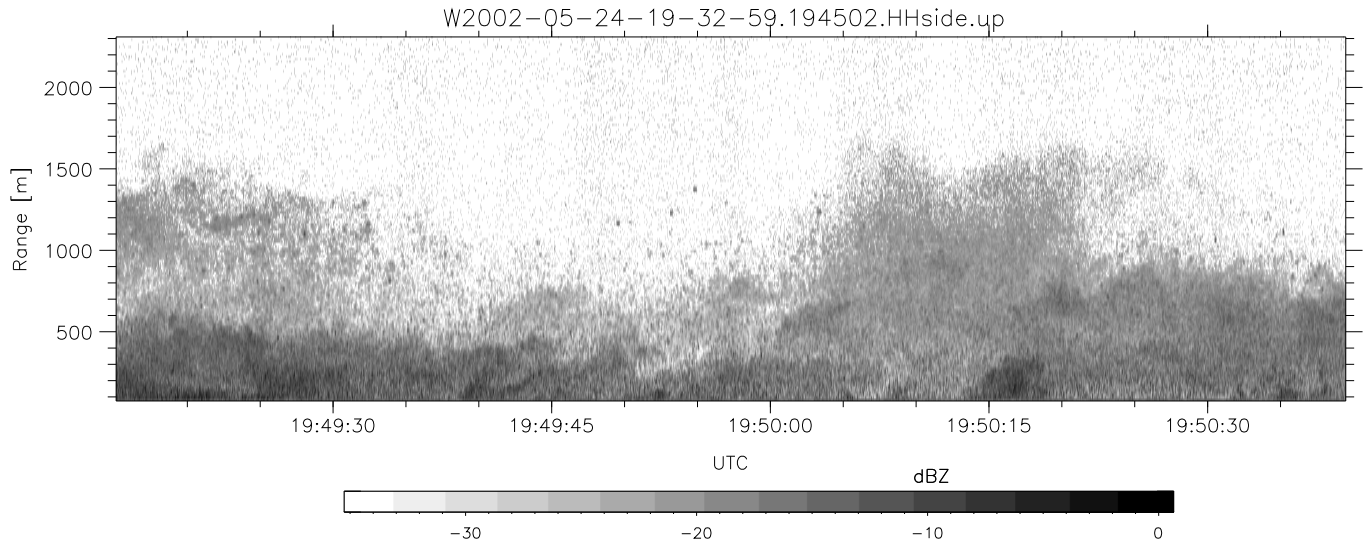


IHOP 2002 (dual-antenna config, modes 1,3,4,7) Data (cal: 49.0,50.0)

W2002-05-24-19-32-59 - SPPMAG	Min	Max	Mean	Std	Varc%	
IRIG:1,UTC: 19:32:44.61 to 19:51:39.89, Dur: 1135s	hhN (dB)	-65.62	-63.88	-64.75	-77.79	5.0
TimeLngth: 1135.28s, TimeInt: 25ms (39.8pps)	vvN (dB)	-65.44	-63.76	-64.57	-77.66	4.9
TimeCor=-13.0s, DSPDif(mn,mx,min):26,20,179	hhL (dB)	-15.45	-5.19	-7.76	-13.50	26.7
PPS(min,max,std): 35,42,1.97	vhL (dB)	-21.49	-6.98	-9.97	-15.02	31.2
Prof: 128 to 45316, NumProf(t/r): 45188/15819	ppN (m/s)	-15.80	15.80	-0.03	9.06	
ProcTime/Recs: 19:45:02-19:51:39/29369-45187	ppT (m/s)	-0.02	0.02	-0.00	0.00	
MxACQtime: 17ms; DRate: 95.3KB/s; Flags: 0, 0, 0	vh/hh (dB)	-NaN	0.90	-18.13	-11.80	429.
Pulse: 275ns, IFfilt: 5.0MHz; ppPol: HH	hn_jmp (dB)	-0.94	1.20	0.12	-11.60	6.7
TxPol: H, PRF: 20 kHz	vn_jmp (dB)	-1.20	1.34	0.11	-11.60	6.7
Range: Delay 75m, Spacing 15m, Gates 150						
Ave. Pulses: 348, Rng/Prof Aspect@90m/s: 6.6						



IHOP 2002 (dual-antenna config, modes 1,3,4,7) Data (cal: 49.0,50.0)

W2002-05-24-19-32-59 - SPPMAG						
IRIG:1,UTC: 19:32:44.61 to 19:51:39.89, Dur: 1135s	hhN(dB)	Min	Max	Mean	Std	Varc%
TimeLngth: 1135.28s, TimeInt: 25ms (39.8pps)	vvN(dB)	-65.44	-63.76	-64.75	-77.79	5.0
TimeCor=-13.0s, DSPDif(mn,mx,min):26,20,179	hhL(dB)	-15.45	-5.19	-7.76	-13.50	26.7
PPS(min,max,std): 35,42,1.97	vhL(dB)	-21.49	-6.98	-9.97	-15.02	31.2
Prof: 128 to 45316, NumProf(t/r): 45188/15819	ppN(m/s)	-15.80	15.80	-0.03	9.06	
ProcTime/Recs: 19:45:02-19:51:39/29369-45187	ppT(m/s)	-0.02	0.02	-0.00	0.00	
MxACQtime: 17ms; DRate: 95.3KB/s; Flags: 0, 0, 0	vh/hh(dB)	-NaN	0.90	-18.13	-11.80	429.
Pulse: 275ns, IFfilt: 5.0MHz; ppPol: HH	hnjmp(dB)	-0.94	1.20	0.12	-11.60	6.7
TxPol: H, PRF: 20 kHz	vnjmp(dB)	-1.20	1.34	0.11	-11.60	6.7
Range: Delay 75m, Spacing 15m, Gates 150						
Ave. Pulses: 348, Rng/Prof Aspect@90m/s: 6.6						