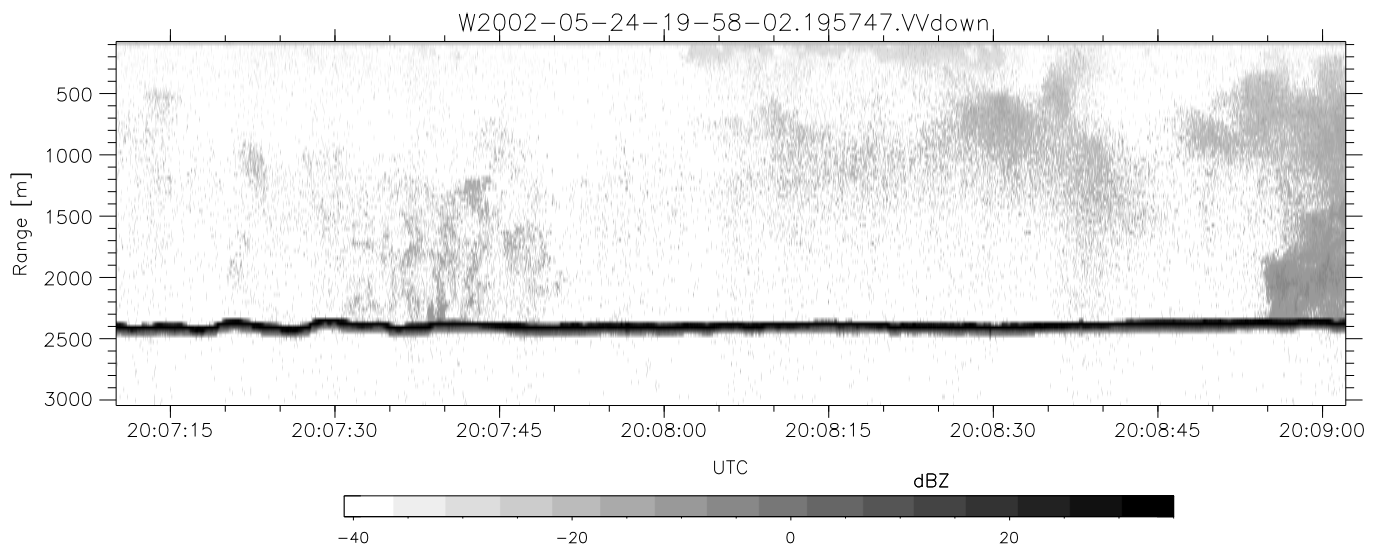
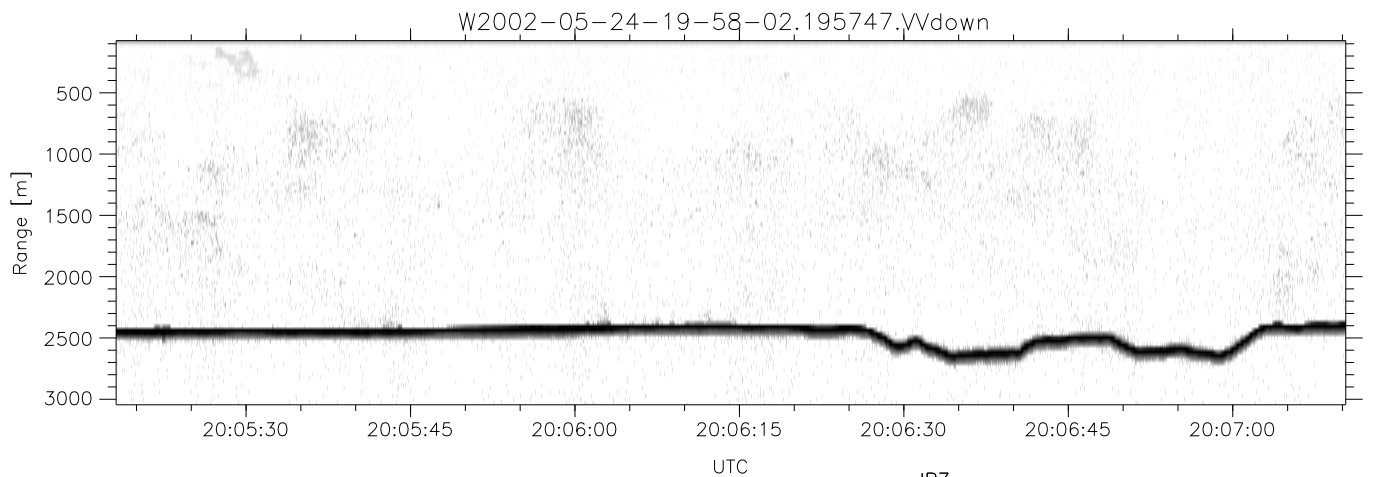
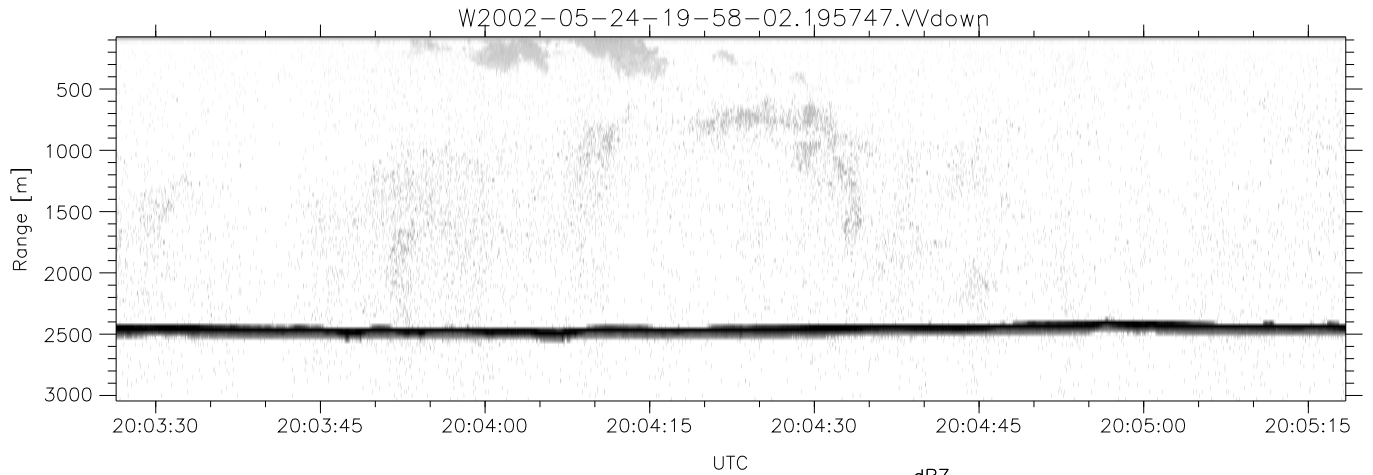


IHOP 2002 (dual-antenna config, modes 1,3,4,7) Data (cal: 55.0,50.0)

W2002-05-24-19-58-02 - PPMAG4
 IRIG:1,UTC: 19:57:47.68 to 20:26:03.12, Dur: 1696s
 TimeLngth: 1695.44s, TimeInt: 29ms (33.9pps)
 TimeCor=-13.0s, DSPDif(mn,mx,min):28,-971,3156
 PPS(min,max,std): 0,137,10.91
 Prof: 623 to 58096, NumProf(t/r): 57473/33134
 ProcTime/Recs: 19:57:47-20:14:04/0-33133
 MxAcQtime: 33ms; DRate: 189.8KB/s; Flags: 0, 0, 0
 Pulse: 275ns, IFfilt: 5.0MHz; ppPol: HH HV VV
 TxPol: HHVV, PRF: 20 10 20 10 kHz
 Range: Delay 75m, Spacing 30m, Gates 100
 Ave. Pulses: 84, Rng/Prof Aspect@90m/s: 11.3

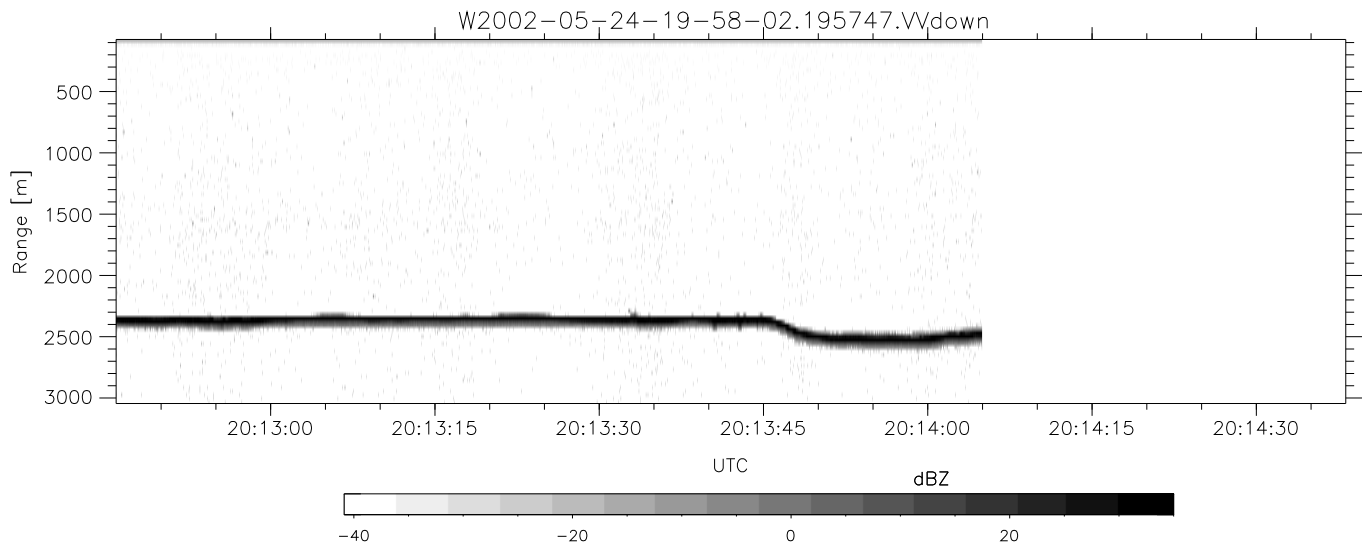
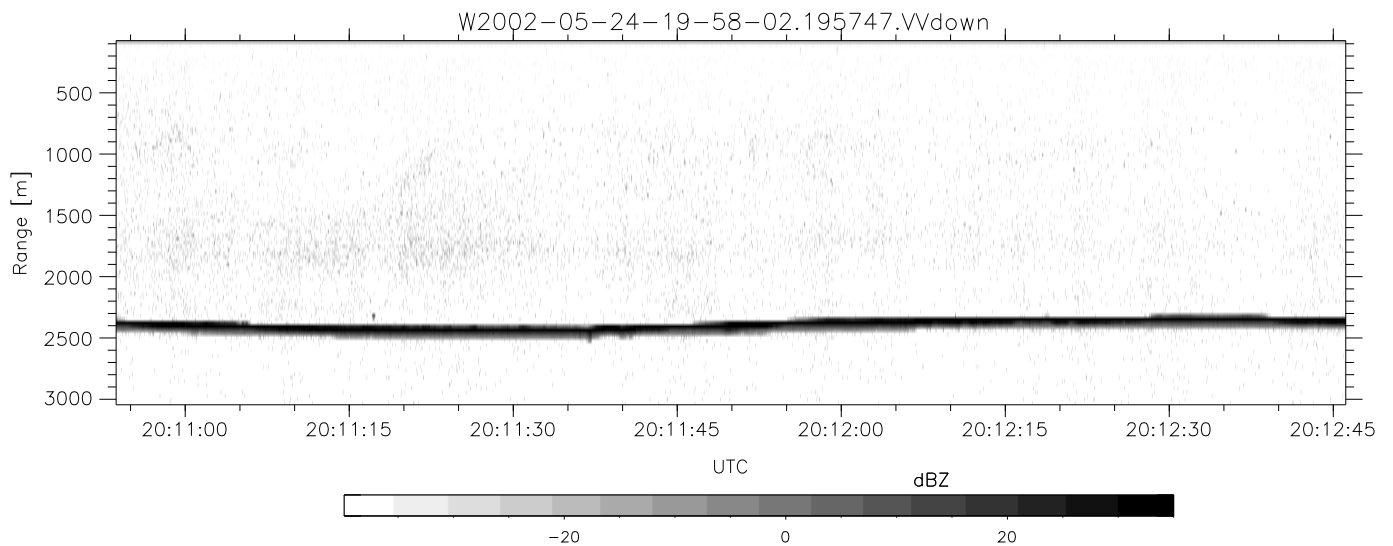
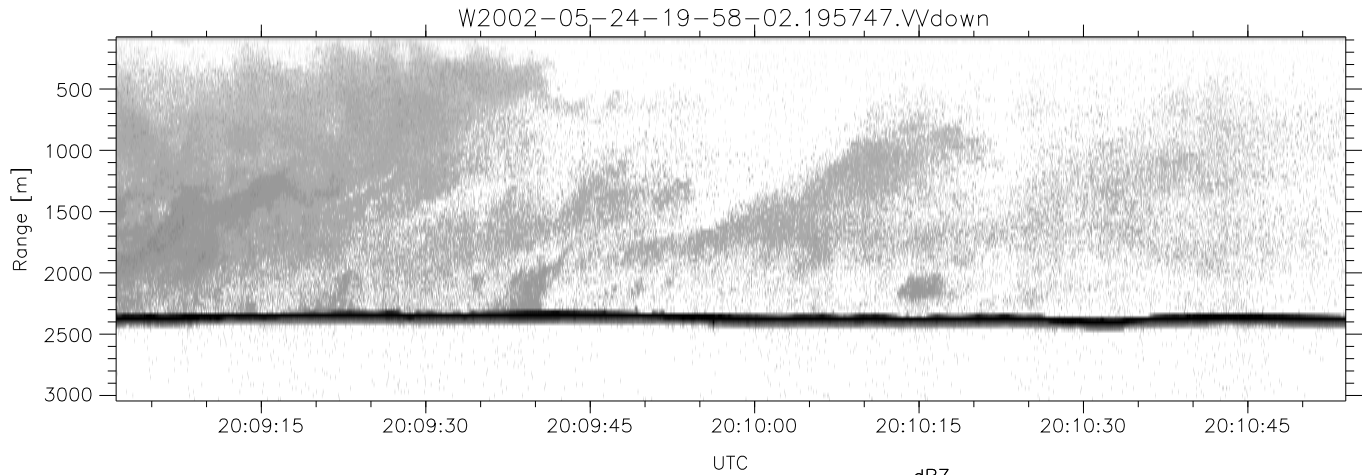
	Min	Max	Mean	Std	Varc%
hhN(dB)	-66.37	-62.77	-64.51	-74.62	9.7
vvN(dB)	-66.33	-62.96	-64.57	-74.65	9.8
hhL(dB)	-20.48	-9.32	-15.92	-19.06	48.5
vvL(dB)	-13.02	-8.01	-9.73	-18.51	13.2
ppN(m/s)	-12.67	12.35	0.01	4.16	
ppT(m/s)	-100.0	97.54	0.09	32.88	
hh/vv(dB)	-NaN	90.29	31.77	68.93	5197
vh/hh(dB)	-NaN	-29.29	-50.69	-40.04	1161
hv/vv(dB)	-NaN	-33.30	-55.09	-45.42	926.
hnjmp(dB)	-2.35	2.59	0.16	-8.44	13.8
vnjmp(dB)	-2.20	2.28	0.14	-8.44	13.8



IHOP 2002 (dual-antenna config, modes 1,3,4,7) Data (cal: 55.0,50.0)

W2002-05-24-19-58-02 - PPMAG4
 IRIG:1,UTC: 19:57:47.68 to 20:26:03.12, Dur: 1696s
 TimeLngth: 1695.44s, TimeInt: 29ms (33.9pps)
 TimeCor=-13.0s, DSPDif(mn,mx,min):28,-971,3156
 PPS(min,max,std): 0,137,10.91
 Prof: 623 to 58096, NumProf(t/r): 57473/33134
 ProcTime/Recs: 19:57:47-20:14:04/0-33133
 MxACQtime: 33ms; DRate: 189.8KB/s; Flags: 0, 0, 0
 Pulse: 275ns, IFfilt: 5.0MHz; ppPol: HH HV VV
 TxPol: HHVV, PRF: 20 10 20 10 kHz
 Range: Delay 75m, Spacing 30m, Gates 100
 Ave. Pulses: 84, Rng/Prof Aspect@90m/s: 11.3

	Min	Max	Mean	Std	Varc%
hhN(dB)	-66.37	-62.77	-64.51	-74.62	9.7
vvN(dB)	-66.33	-62.96	-64.57	-74.65	9.8
hhL(dB)	-20.48	-9.32	-15.92	-19.06	48.5
vvL(dB)	-13.02	-8.01	-9.73	-18.51	13.2
ppN(m/s)	-12.67	12.35	0.01	4.16	
ppT(m/s)	-100.0	97.54	0.09	32.88	
hh/vv(dB)	-NaN	90.29	31.77	68.93	5197
vh/hh(dB)	-NaN	-29.29	-50.69	-40.04	1161
hv/vv(dB)	-NaN	-33.30	-55.09	-45.42	926.
hnjmp(dB)	-2.35	2.59	0.16	-8.44	13.8
vnjmp(dB)	-2.20	2.28	0.14	-8.44	13.8



IHOP 2002 (dual-antenna config, modes 1,3,4,7) Data (cal: 55.0,50.0)

W2002-05-24-19-58-02 - PPMAG4
 IRIG:1,UTC: 19:57:47.68 to 20:26:03.12, Dur: 1696s
 TimeLngth: 1695.44s, TimeInt: 29ms (33.9pps)
 TimeCor=-13.0s, DSPDif(mn,mx,min):28,-971,3156
 PPS(min,max,std): 0,137,10.91
 Prof: 623 to 58096, NumProf(t/r): 57473/33134
 ProcTime/Recs: 19:57:47-20:14:04/0-33133
 MxACQtime: 33ms; DRate: 189.8KB/s; Flags: 0, 0, 0
 Pulse: 275ns, IFfilt: 5.0MHz; ppPol: HH HV VV
 TxPol: HHVV, PRF: 20 10 20 10 kHz
 Range: Delay 75m, Spacing 30m, Gates 100
 Ave. Pulses: 84, Rng/Prof Aspect@90m/s: 11.3

	Min	Max	Mean	Std	Varc%
hhN(dB)	-66.37	-62.77	-64.51	-74.62	9.7
vvN(dB)	-66.33	-62.96	-64.57	-74.65	9.8
hhL(dB)	-20.48	-9.32	-15.92	-19.06	48.5
vvL(dB)	-13.02	-8.01	-9.73	-18.51	13.2
ppN(m/s)	-12.67	12.35	0.01	4.16	
ppT(m/s)	-100.0	97.54	0.09	32.88	
hh/vv(dB)	-NaN	90.29	31.77	68.93	5197
vh/hh(dB)	-NaN	-29.29	-50.69	-40.04	1161
hv/vv(dB)	-NaN	-33.30	-55.09	-45.42	926.
hnjmp(dB)	-2.35	2.59	0.16	-8.44	13.8
vnjmp(dB)	-2.20	2.28	0.14	-8.44	13.8