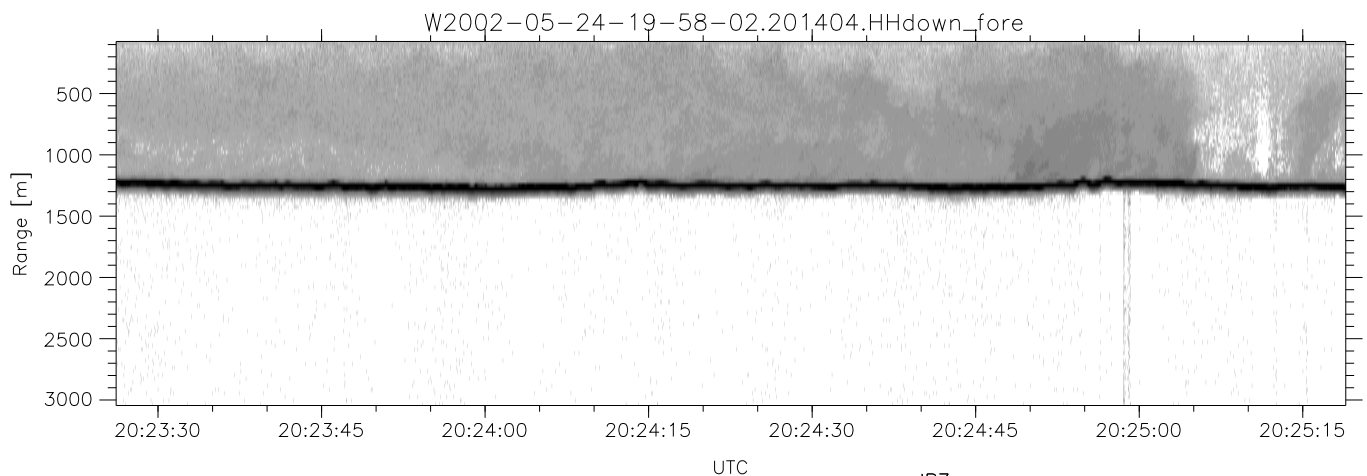
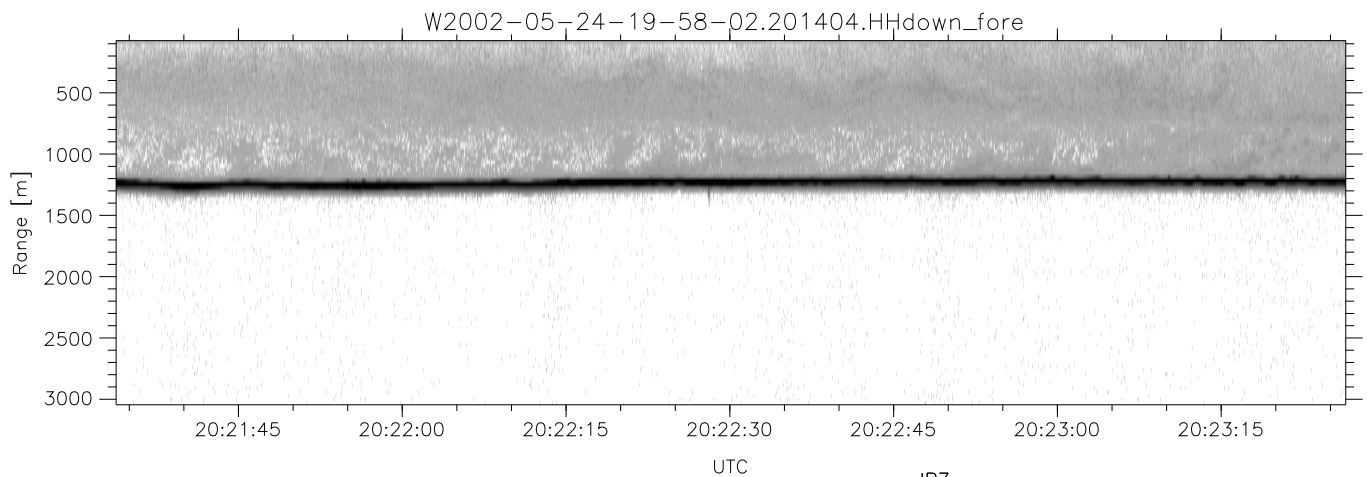
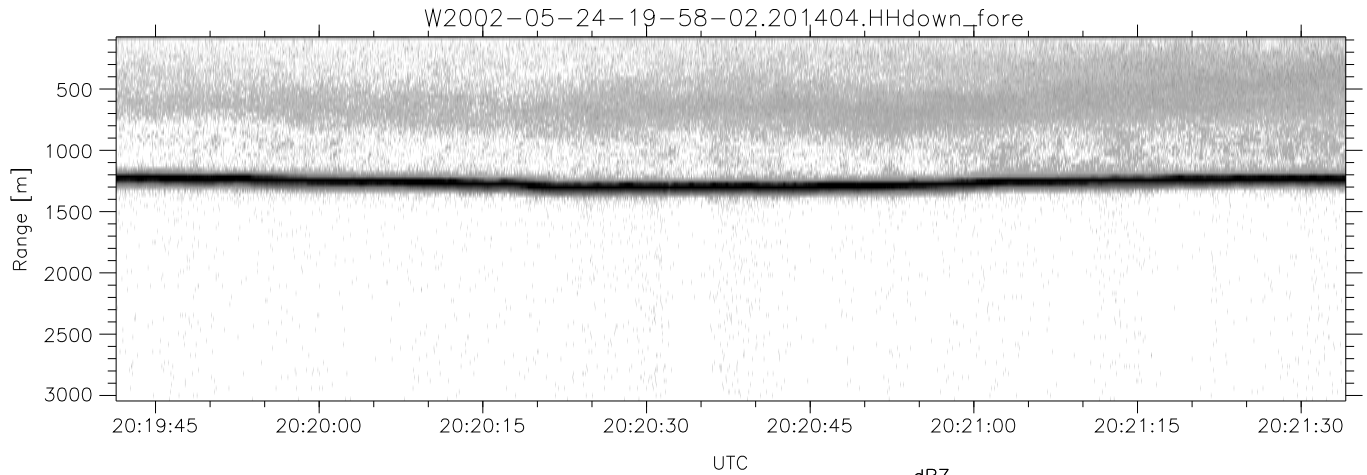


IHOP 2002 (dual-antenna config, modes 1,3,4,7) Data (cal: 55.0,50.0)

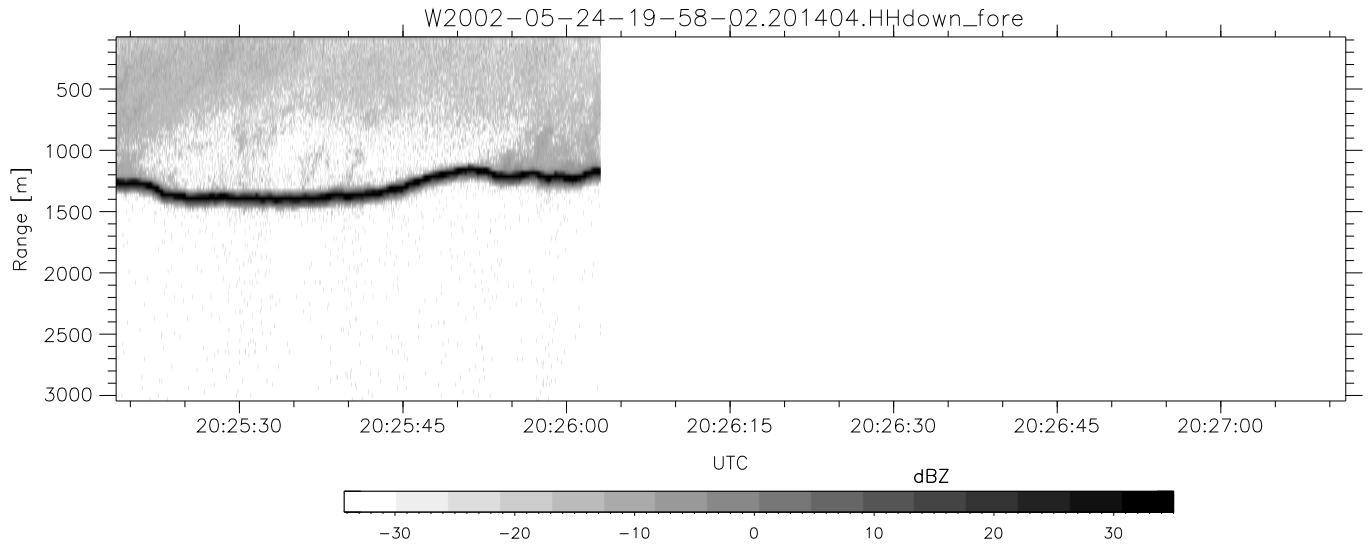
W2002-05-24-19-58-02 - PPMAG4  
 IRIG:1,UTC: 19:57:47.68 to 20:26:03.12, Dur: 1696s  
 TimeLngth: 1695.44s, TimeInt: 29ms (33.9pps)  
 TimeCor=-13.0s, DSPDif(mn,mx,min):30,-971,3058  
 PPS(min,max,std): 0,137,11.65  
 Prof: 623 to 58096, NumProf(t/r): 57473/24339  
 ProcTime/Recs: 20:14:04-20:26:03/33134-57472  
 MxACQtime: 33ms; DRate: 189.8KB/s; Flags: 0, 0, 0  
 Pulse: 275ns, IFilt: 5.0MHz; ppPol: HH HV VV  
 TxPol: HHVV, PRF: 20 10 20 10 kHz  
 Range: Delay 75m, Spacing 30m, Gates 100  
 Ave. Pulses: 84, Rng/Prof Aspect@90m/s: 11.3

	Min	Max	Mean	Std	Varc%
hhN(dB)	-66.39	-62.08	-64.45	-74.38	10.2
vvN(dB)	-66.80	-62.68	-64.51	-74.51	10.0
hhL(dB)	-23.23	-7.42	-10.71	-15.57	32.7
vvL(dB)	-34.07	-8.74	-18.12	-15.77	171.
ppN(m/s)	-12.66	12.88	0.04	4.17	
ppT(m/s)	-100.0	101.76	0.28	32.97	
hh/vv(dB)	-NaN	99.33	51.13	74.47	2159
vh/hh(dB)	-NaN	-23.33	-47.61	-39.24	686.
hv/vv(dB)	-NaN	-26.80	-50.38	-43.51	486.
hnjmp(dB)	-2.18	2.42	0.15	-8.52	13.6
vnjmp(dB)	-2.26	2.30	0.15	-8.42	13.9



IHOP 2002 (dual-antenna config, modes 1,3,4,7) Data (cal: 55.0,50.0)

W2002-05-24-19-58-02 - PPMAG4						
IRIG:1,UTC: 19:57:47.68 to 20:26:03.12, Dur: 1696s	hhN (dB)	Min	Max	Mean	Std	Varc%
TimeLngth: 1695.44s, TimeInt: 29ms (33.9pps)	vvN (dB)	-66.39	-62.08	-64.45	-74.38	10.2
TimeCor=-13.0s, DSPDif(mn,mx,min):30,-971,3058	hhL (dB)	-66.80	-62.68	-64.51	-74.51	10.0
PPS(min,max,std): 0,137,11.65	vvL (dB)	-23.23	-7.42	-10.71	-15.57	32.7
Prof: 623 to 58096, NumProf(t/r): 57473/24339	ppN (m/s)	-34.07	-8.74	-18.12	-15.77	171.
ProcTime/Recs: 20:14:04-20:26:03/33134-57472	ppT (m/s)	-12.66	12.88	0.04	4.17	
MxACQtime: 33ms; DRate: 189.8KB/s; Flags: 0, 0, 0	hh/vv (dB)	-100.0	101.76	0.28	32.97	
Pulse: 275ns, IFfilt: 5.0MHz; ppPol: HH HV VV	vh/vh (dB)	-NaN	99.33	51.13	74.47	2159
TxPol: HHVV, PRF: 20 10 20 10 kHz	hv/hv (dB)	-NaN	-23.33	-47.61	-39.24	686.
Range: Delay 75m, Spacing 30m, Gates 100	hn/jmp (dB)	-NaN	-26.80	-50.38	-43.51	486.
Ave. Pulses: 84, Rng/Prof Aspect@90m/s: 11.3	vn/jmp (dB)	-2.18	2.42	0.15	-8.52	13.6
		-2.26	2.30	0.15	-8.42	13.9



IHOP 2002 (dual-antenna config, modes 1,3,4,7) Data (cal: 55.0,50.0)

W2002-05-24-19-58-02 - PPMAG4						
IRIG:1,UTC: 19:57:47.68 to 20:26:03.12, Dur: 1696s	hhN(dB)	Min	Max	Mean	Std	Varc%
TimeLngth: 1695.44s, TimeInt: 29ms (33.9pps)	vvN(dB)	-66.80	-62.68	-64.51	-74.51	10.0
TimeCor=-13.0s, DSPDif(mn,mx,min):30,-971,3058	hhL(dB)	-23.23	-7.42	-10.71	-15.57	32.7
PPS(min,max,std): 0,137,11.65	vvL(dB)	-34.07	-8.74	-18.12	-15.77	171.
Prof: 623 to 58096, NumProf(t/r): 57473/24339	ppN(m/s)	-12.66	12.88	0.04	4.17	
ProcTime/Recs: 20:14:04-20:26:03/33134-57472	ppT(m/s)	-100.0	101.76	0.28	32.97	
MxACQtime: 33ms; DRate: 189.8KB/s; Flags: 0, 0, 0	hh/vv(dB)	-NaN	99.33	51.13	74.47	2159
Pulse: 275ns, IFilt: 5.0MHz; ppPol: HH HV VV	vh/hh(dB)	-NaN	-23.33	-47.61	-39.24	686.
TxPol: HHVV, PRF: 20 10 20 10 kHz	hv/vv(dB)	-NaN	-26.80	-50.38	-43.51	486.
Range: Delay 75m, Spacing 30m, Gates 100	hnjmp(dB)	-2.18	2.42	0.15	-8.52	13.6
Ave. Pulses: 84, Rng/Prof Aspect@90m/s: 11.3	vnjmp(dB)	-2.26	2.30	0.15	-8.42	13.9