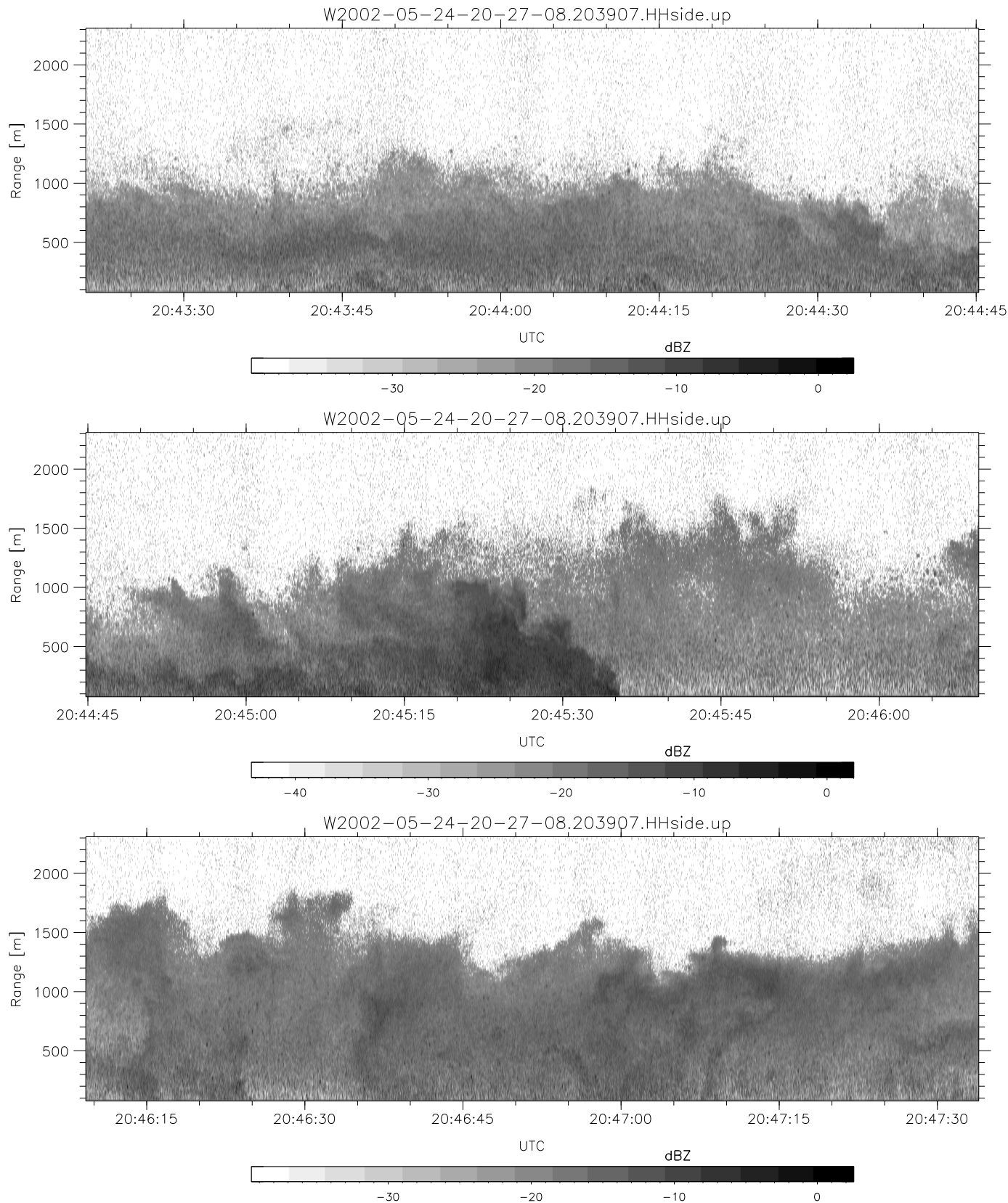


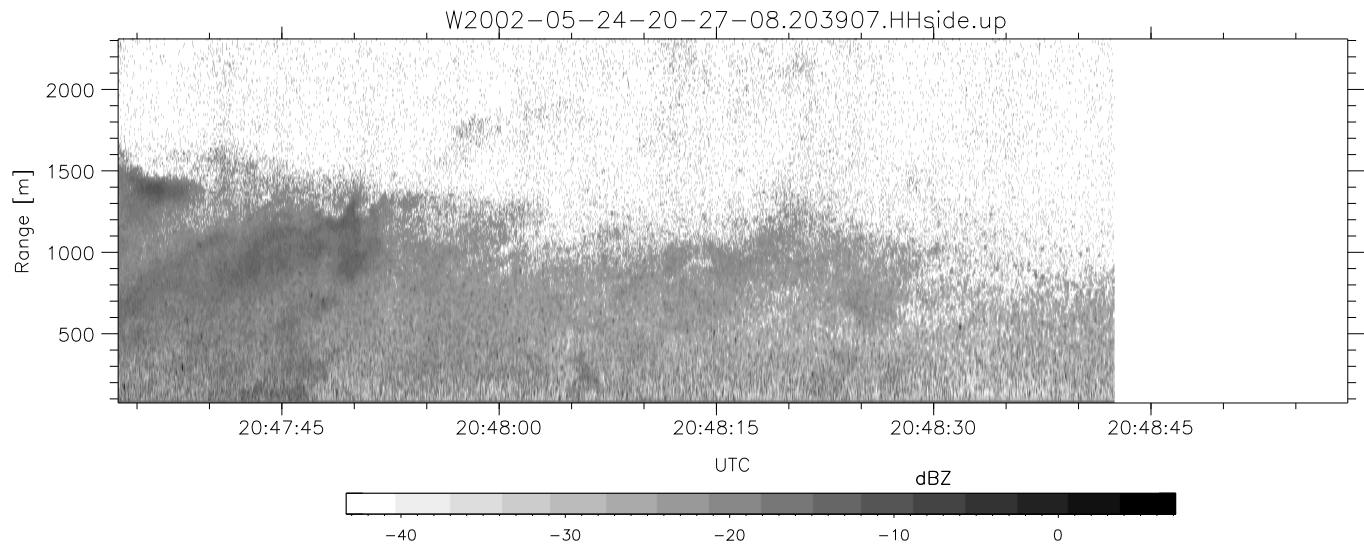
IHOP 2002 (dual-antenna config, modes 1,3,4,7) Data (cal: 49.0,50.0)

W2002-05-24-20-27-08 - SPPMAG						
IRIG:1,UTC: 20:26:53.59 to 20:48:42.47, Dur: 1309s	hhN(dB)	Min	Max	Mean	Std	Varc%
TimeLngth: 1308.89s, TimeInt: 26ms (37.9pps)	vvN(dB)	-65.62	-63.90	-64.74	-77.68	5.1
TimeCor=-13.0s, DSPDif(mn,mx,min):26,-979,3243	hhL(dB)	-65.45	-63.84	-64.56	-77.63	4.9
PPS(min,max,std): 0,159,13.10	vhL(dB)	-17.85	-5.91	-10.49	-13.85	46.1
Prof: 467 to 50055, NumProf(t/r): 49588/21725	vhL(dB)	-26.07	-7.30	-12.16	-15.22	49.4
ProcTime/Recs: 20:39:07-20:48:42/27863-49587	ppN(m/s)	-15.80	15.80	-0.04	9.02	
MxAcQtime: 17ms; DRate: 90.7KB/s; Flags: 0, 0, 0	ppT(m/s)	-0.03	0.02	-0.00	0.01	
Pulse: 275ns, IFfilt: 5.0MHz; ppPol: HH	vh/hh(dB)	-NaN	0.90	-23.77	-14.23	899.
TxPol: H, PRF: 20 kHz	hnjmp(dB)	-1.34	0.86	-0.10	-11.83	6.7
Range: Delay 75m, Spacing 15m, Gates 150	vnjmp(dB)	-1.20	0.96	-0.10	-11.74	6.8
Ave. Pulses: 348, Rng/Prof Aspect@90m/s: 6.3						



IHOP 2002 (dual-antenna config, modes 1,3,4,7) Data (cal: 49.0,50.0)

W2002-05-24-20-27-08 - SPPMAG						
IRIG:1,UTC: 20:26:53.59 to 20:48:42.47, Dur: 1309s	hhN(dB)	Min	Max	Mean	Std	Varc%
TimeLngth: 1308.89s, TimeInt: 26ms (37.9pps)	vvN(dB)	-65.62	-63.90	-64.74	-77.68	5.1
TimeCor=-13.0s, DSPDif(mn,mx,min):26,-979,3243	hhL(dB)	-65.45	-63.84	-64.56	-77.63	4.9
PPS(min,max,std): 0,159,13.10	vhL(dB)	-17.85	-5.91	-10.49	-13.85	46.1
Prof: 467 to 50055, NumProf(t/r): 49588/21725	ppN(m/s)	-26.07	-7.30	-12.16	-15.22	49.4
ProcTime/Recs: 20:39:07-20:48:42/27863-49587	ppT(m/s)	-15.80	15.80	-0.04	9.02	
MxACQtime: 17ms; DRate: 90.7KB/s; Flags: 0, 0, 0	vnjmb(dB)	-0.03	0.02	-0.00	0.01	
Pulse: 275ns, IFfilt: 5.0MHz; ppPol: HH	vh/hh(dB)	-NaN	0.90	-23.77	-14.23	899.
TxPol: H, PRF: 20 kHz	hnjmb(dB)	-1.34	0.86	-0.10	-11.83	6.7
Range: Delay 75m, Spacing 15m, Gates 150	vnjmb(dB)	-1.20	0.96	-0.10	-11.74	6.8
Ave. Pulses: 348, Rng/Prof Aspect@90m/s: 6.3						



IHOP 2002 (dual-antenna config, modes 1,3,4,7) Data (cal: 49.0,50.0)

W2002-05-24-20-27-08 - SPPMAG						
IRIG:1,UTC: 20:26:53.59 to 20:48:42.47, Dur: 1309s	hhN(dB)	Min	Max	Mean	Std	Varc%
TimeLngth: 1308.89s, TimeInt: 26ms (37.9pps)	vvN(dB)	-65.45	-63.84	-64.56	-77.63	4.9
TimeCor=-13.0s, DSPDif(mn,mx,min):26,-979,3243	hhL(dB)	-17.85	-5.91	-10.49	-13.85	46.1
PPS(min,max,std): 0,159,13.10	vhL(dB)	-26.07	-7.30	-12.16	-15.22	49.4
Prof: 467 to 50055, NumProf(t/r): 49588/21725	ppN(m/s)	-15.80	15.80	-0.04	9.02	
ProcTime/Recs: 20:39:07-20:48:42/27863-49587	ppT(m/s)	-0.03	0.02	-0.00	0.01	
MxACQtime: 17ms; DRate: 90.7KB/s; Flags: 0, 0, 0	vh/hh(dB)	-NaN	0.90	-23.77	-14.23	899.
Pulse: 275ns, IFfilt: 5.0MHz; ppPol: HH	hnjmp(dB)	-1.34	0.86	-0.10	-11.83	6.7
TxPol: H, PRF: 20 kHz	vnjmp(dB)	-1.20	0.96	-0.10	-11.74	6.8
Range: Delay 75m, Spacing 15m, Gates 150						
Ave. Pulses: 348, Rng/Prof Aspect@90m/s: 6.3						