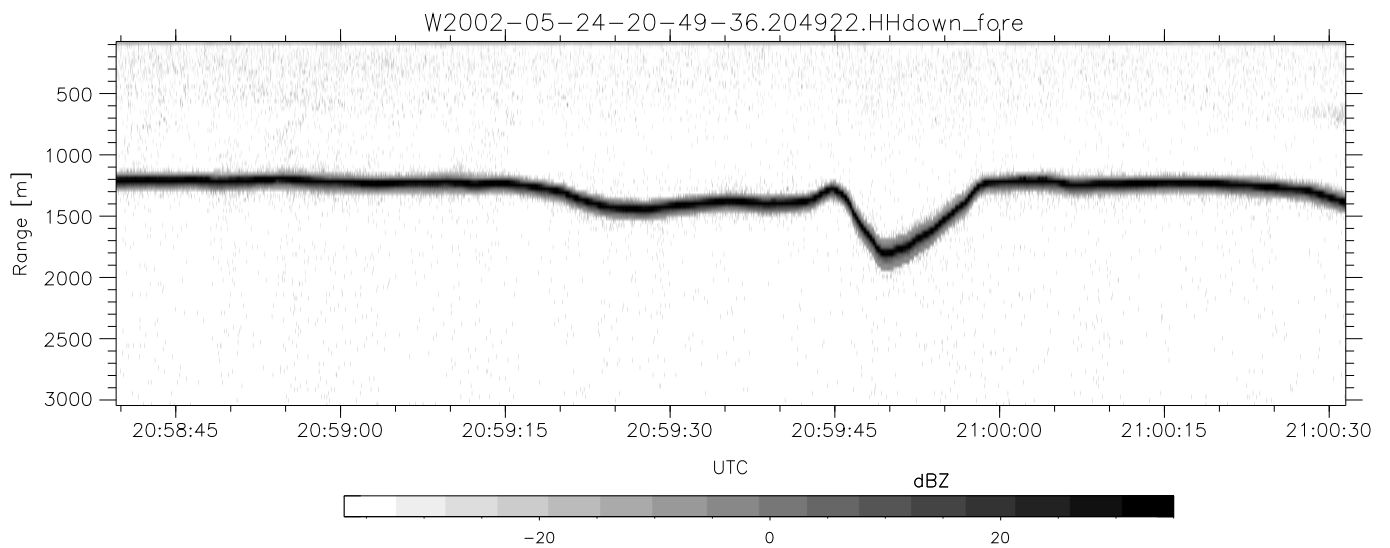
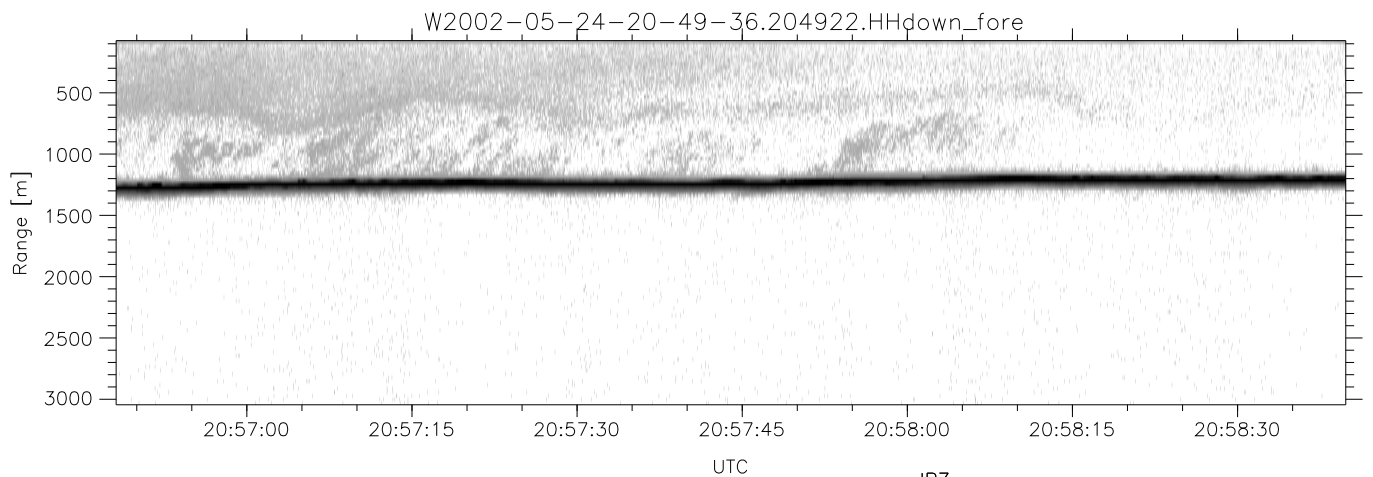
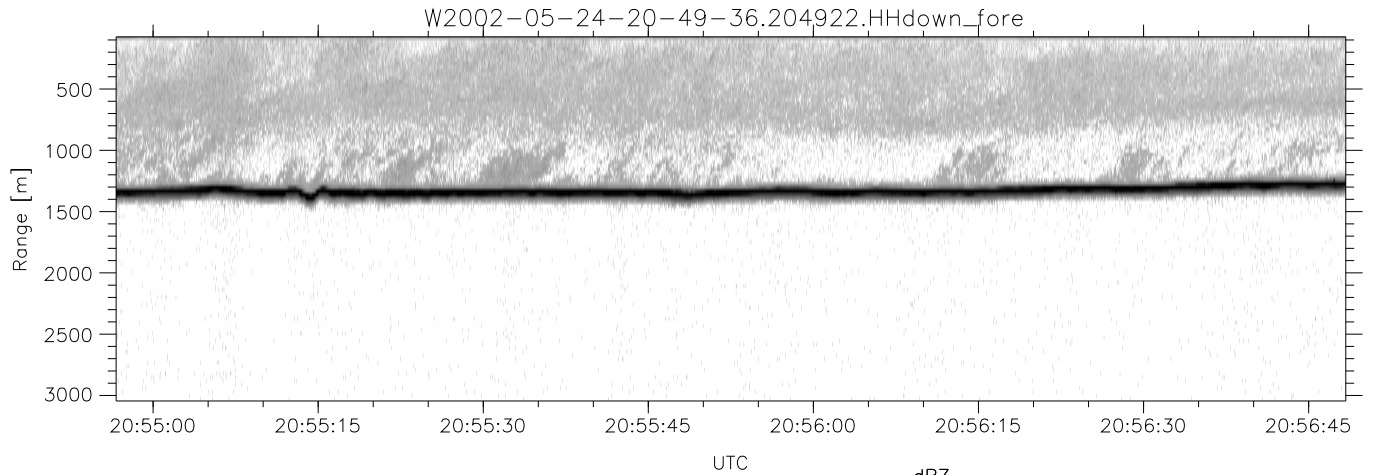


IHOP 2002 (dual-antenna config, modes 1,3,4,7) Data (cal: 55.0,50.0)

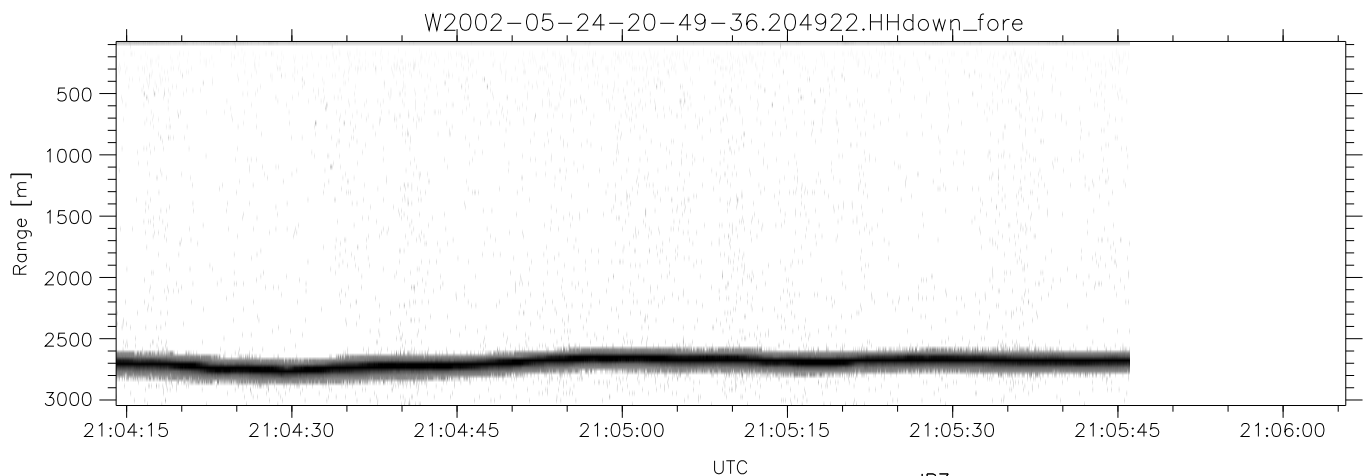
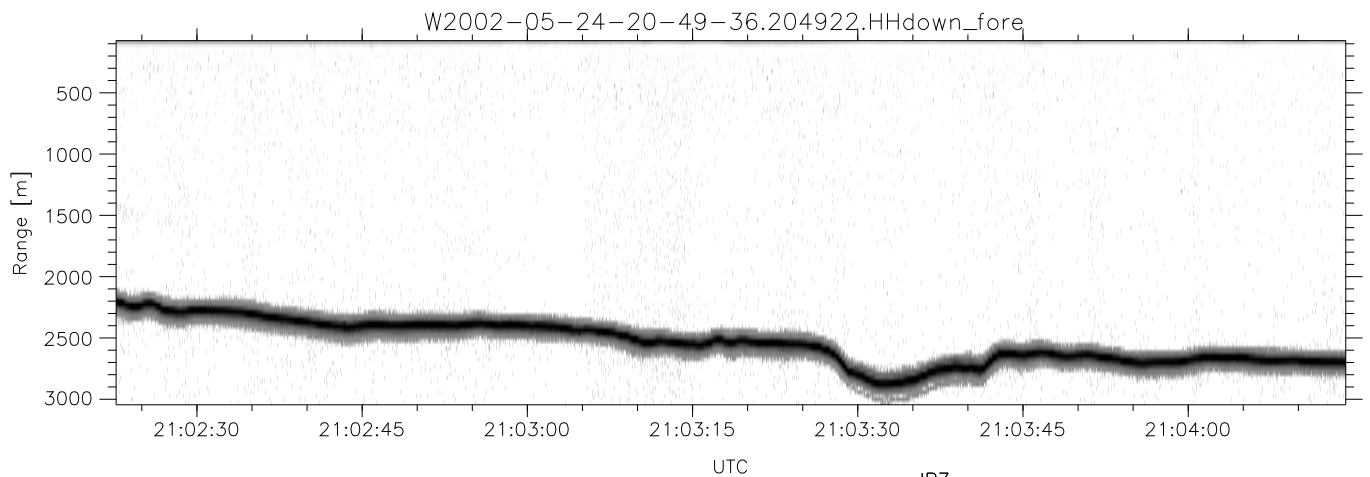
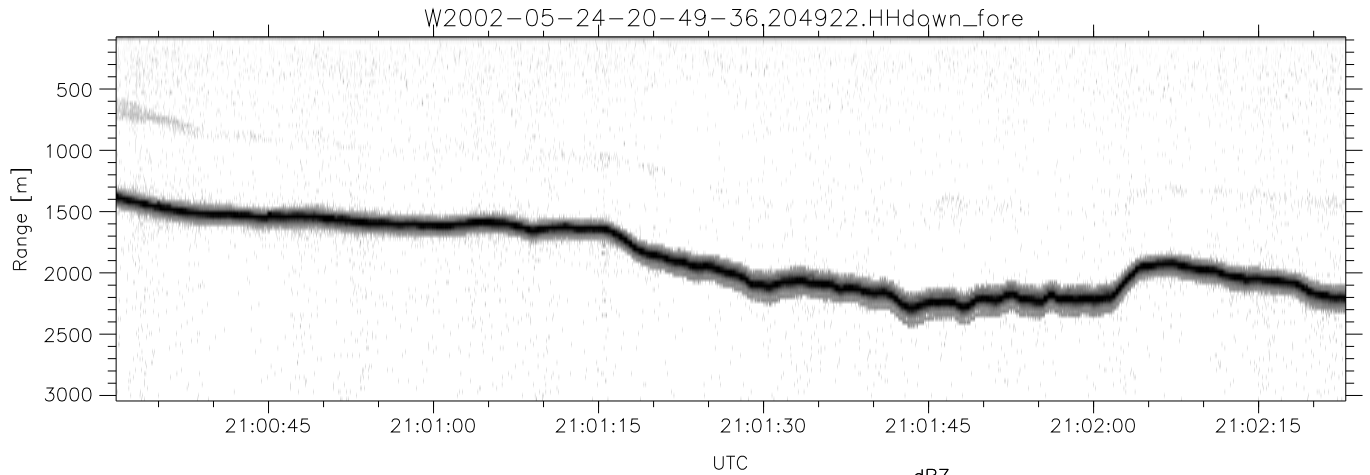
W2002-05-24-20-49-36 - PPMAG4  
 IRIG:1,UTC: 20:49:22.25 to 21:14:11.17, Dur: 1489s  
 TimeLngth: 1488.92s, TimeInt: 29ms (33.4pps)  
 TimeCor=-13.0s, DSPDif(mn,mx,min):29,28,666  
 PPS(min,max,std): 18,36,2.04  
 Prof: 232 to 50008, NumProf(t/r): 49776/33134  
 ProcTime/Recs: 20:49:22-21:05:46/0-33133  
 MxACQtime: 33ms; DRate: 187.1KB/s; Flags: 0, 0, 0  
 Pulse: 275ns, IFfilt: 5.0MHz; ppPol: HH HV VV  
 TxPol: HHVV, PRF: 20 10 20 10 kHz  
 Range: Delay 75m, Spacing 30m, Gates 100  
 Ave. Pulses: 84, Rng/Prof Aspect@90m/s: 11.1

|           | Min    | Max    | Mean   | Std    | Varc% |
|-----------|--------|--------|--------|--------|-------|
| hhN(dB)   | -66.22 | -62.92 | -64.54 | -74.68 | 9.7   |
| vvN(dB)   | -66.46 | -62.97 | -64.58 | -74.67 | 9.8   |
| hhL(dB)   | -22.35 | -7.14  | -10.59 | -14.73 | 38.5  |
| vvL(dB)   | -35.46 | -8.96  | -15.00 | -14.79 | 105.  |
| ppN(m/s)  | -12.63 | 12.56  | -0.01  | 4.15   |       |
| ppT(m/s)  | -99.77 | 99.19  | -0.12  | 32.76  |       |
| hh/vv(dB) | -NaN   | Inf    | Inf    | -NaN   | -NaN  |
| vh/hh(dB) | -NaN   | -28.48 | -48.11 | -39.68 | 696.  |
| hv/vv(dB) | -NaN   | -33.32 | -51.17 | -44.23 | 494.  |
| hnjmp(dB) | -2.30  | 2.26   | -0.06  | -8.69  | 13.7  |
| vnjmp(dB) | -2.54  | 2.32   | -0.06  | -8.64  | 13.9  |



IHOP 2002 (dual-antenna config, modes 1,3,4,7) Data (cal: 55.0,50.0)

|  |           |        |        |        |             |
|--|-----------|--------|--------|--------|-------------|
| W2002-05-24-20-49-36 - PPMAG4                      | Min       | Max    | Mean   | Std    | Varc%       |
| IRIG:1,UTC: 20:49:22.25 to 21:14:11.17, Dur: 1489s | -66.22    | -62.92 | -64.54 | -74.68 | 9.7         |
| TimeLngth: 1488.92s, TimeInt: 29ms (33.4pps)       | -66.46    | -62.97 | -64.58 | -74.67 | 9.8         |
| TimeCor=-13.0s, DSPDif(mn,mx,min):29,28,666        | -22.35    | -7.14  | -10.59 | -14.73 | 38.5        |
| PPS(min,max,std): 18,36,2.04                       | -35.46    | -8.96  | -15.00 | -14.79 | 105.        |
| Prof: 232 to 50008, NumProf(t/r): 49776/33134      | ppN(m/s)  | -12.63 | 12.56  | -0.01  | 4.15        |
| ProcTime/Recs: 20:49:22-21:05:46/0-33133           | ppT(m/s)  | -99.77 | 99.19  | -0.12  | 32.76       |
| MxAcQtime: 33ms; DRate: 187.1KB/s; Flags: 0, 0, 0  | hh/vv(dB) | -NaN   | Inf    | Inf    | -NaN -NaN   |
| Pulse: 275ns, IFilt: 5.0MHz; ppPol: HH HV VV       | vh/hh(dB) | -NaN   | -28.48 | -48.11 | -39.68 696. |
| TxPol: HHVV, PRF: 20 10 20 10 kHz                  | hv/vv(dB) | -NaN   | -33.32 | -51.17 | -44.23 494. |
| Range: Delay 75m, Spacing 30m, Gates 100           | hnjmp(dB) | -2.30  | 2.26   | -0.06  | -8.69 13.7  |
| Ave. Pulses: 84, Rng/Prof Aspect@90m/s: 11.1       | vnjmp(dB) | -2.54  | 2.32   | -0.06  | -8.64 13.9  |



IHOP 2002 (dual-antenna config, modes 1,3,4,7) Data (cal: 55.0,50.0)

W2002-05-24-20-49-36 - PPMAG4  
 IRIG:1,UTC: 20:49:22.25 to 21:14:11.17, Dur: 1489s  
 TimeLngth: 1488.92s, TimeInt: 29ms (33.4pps)  
 TimeCor=-13.0s, DSPDif(mn,mx,min):29,28,666  
 PPS(min,max,std): 18,36,2.04  
 Prof: 232 to 50008, NumProf(t/r): 49776/33134  
 ProcTime/Recs: 20:49:22-21:05:46/0-33133  
 MxACQtime: 33ms; DRate: 187.1KB/s; Flags: 0, 0, 0  
 Pulse: 275ns, IFfilt: 5.0MHz; ppPol: HH HV VV  
 TxPol: HHVV, PRF: 20 10 20 10 kHz  
 Range: Delay 75m, Spacing 30m, Gates 100  
 Ave. Pulses: 84, Rng/Prof Aspect@90m/s: 11.1

|           | Min    | Max    | Mean   | Std    | Varc% |
|-----------|--------|--------|--------|--------|-------|
| hhN(dB)   | -66.22 | -62.92 | -64.54 | -74.68 | 9.7   |
| vvN(dB)   | -66.46 | -62.97 | -64.58 | -74.67 | 9.8   |
| hhL(dB)   | -22.35 | -7.14  | -10.59 | -14.73 | 38.5  |
| vvL(dB)   | -35.46 | -8.96  | -15.00 | -14.79 | 105.  |
| ppN(m/s)  | -12.63 | 12.56  | -0.01  | 4.15   |       |
| ppT(m/s)  | -99.77 | 99.19  | -0.12  | 32.76  |       |
| hh/vv(dB) | -NaN   | Inf    | Inf    | -NaN   | -NaN  |
| vh/hh(dB) | -NaN   | -28.48 | -48.11 | -39.68 | 696.  |
| hv/vv(dB) | -NaN   | -33.32 | -51.17 | -44.23 | 494.  |
| hnjmp(dB) | -2.30  | 2.26   | -0.06  | -8.69  | 13.7  |
| vnjmp(dB) | -2.54  | 2.32   | -0.06  | -8.64  | 13.9  |