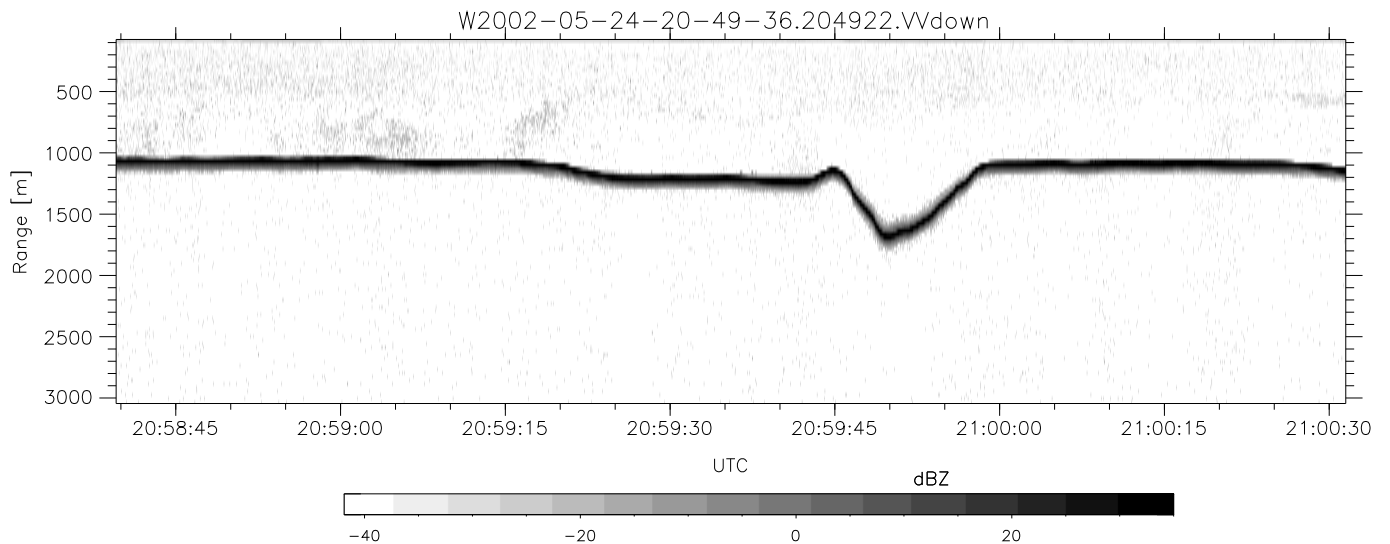
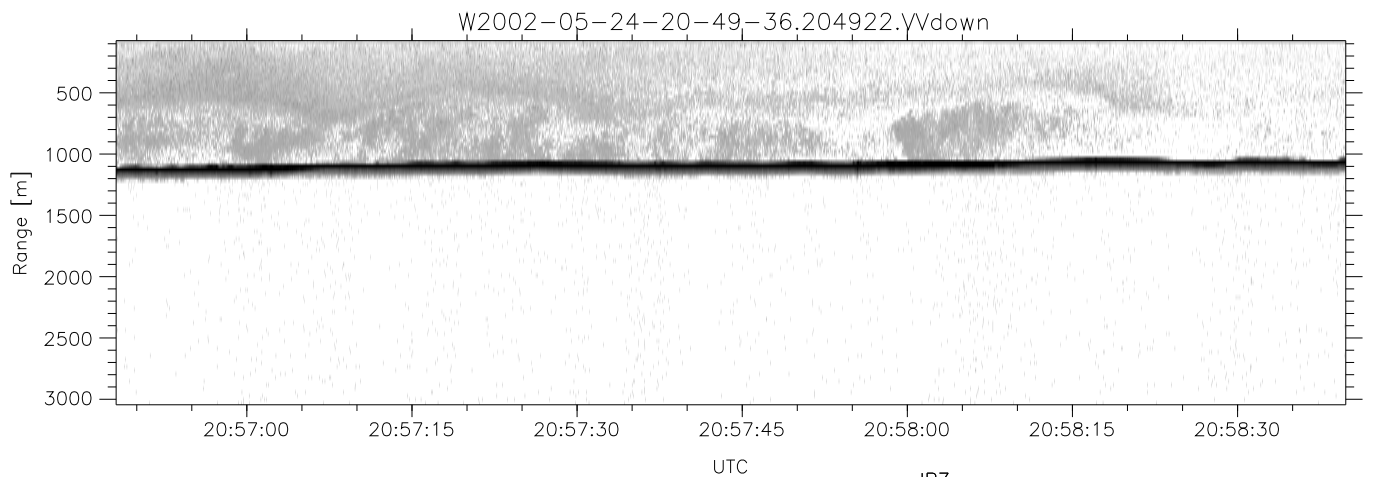
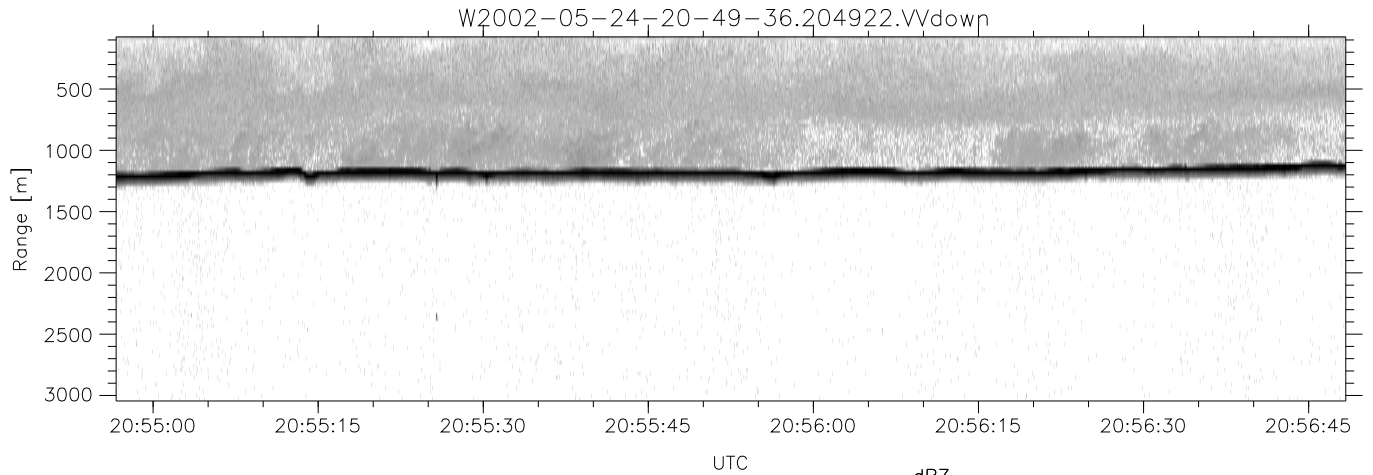


IHOP 2002 (dual-antenna config, modes 1,3,4,7) Data (cal: 55.0,50.0)

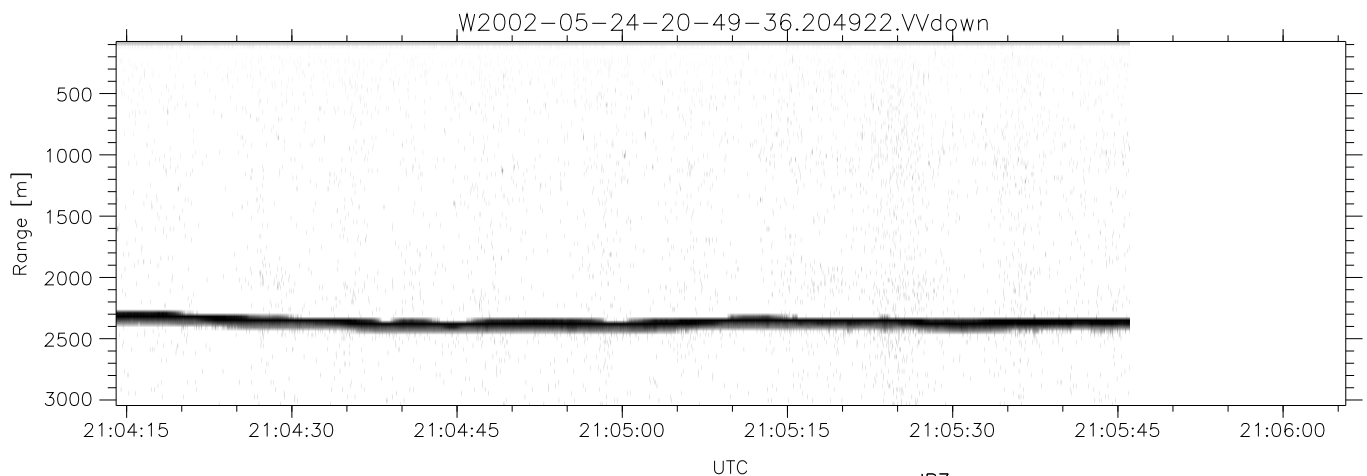
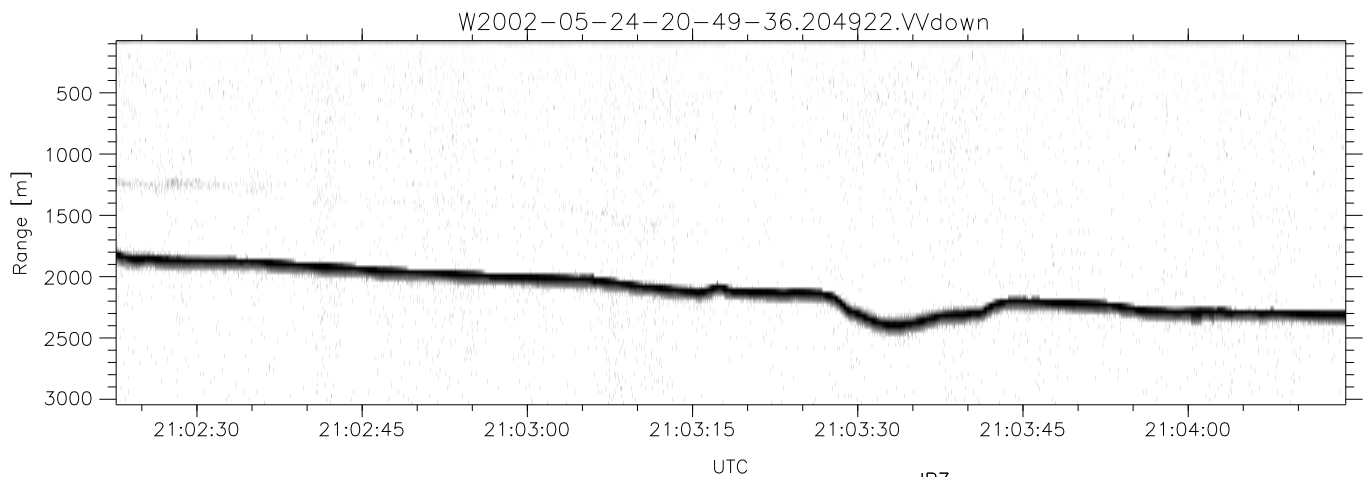
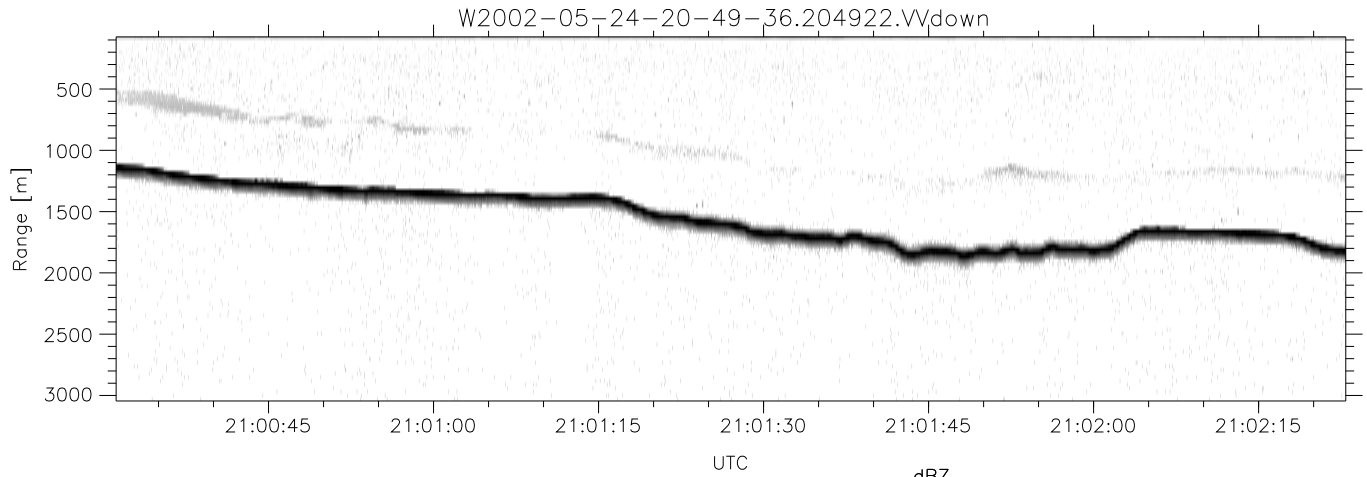
W2002-05-24-20-49-36 - PPMAG4	Min	Max	Mean	Std	Varc%	
IRIG:1,UTC: 20:49:22.25 to 21:14:11.17, Dur: 1489s	hhN (dB)	-66.22	-62.92	-64.54	-74.68	9.7
TimeLngth: 1488.92s, TimeInt: 29ms (33.4pps)	vvN (dB)	-66.46	-62.97	-64.58	-74.67	9.8
TimeCor=-13.0s, DSPDif(mn,mx,min):29,28,666	hhL (dB)	-22.35	-7.14	-10.59	-14.73	38.5
PPS(min,max,std): 18,36,2.04	vvL (dB)	-35.46	-8.96	-15.00	-14.79	105.
Prof: 232 to 50008, NumProf(t/r): 49776/33134	ppN (m/s)	-12.63	12.56	-0.01	4.15	
ProcTime/Recs: 20:49:22-21:05:46/0-33133	ppT (m/s)	-99.77	99.19	-0.12	32.76	
MxACQtime: 33ms; DRate: 187.1KB/s; Flags: 0, 0, 0	hh/vv (dB)	-NaN	Inf	Inf	-NaN	-NaN
Pulse: 275ns, IFilt: 5.0MHz; ppPol: HH HV VV	vh/hh (dB)	-NaN	-28.48	-48.11	-39.68	696.
TxPol: HHVV, PRF: 20 10 20 10 kHz	hv/vv (dB)	-NaN	-33.32	-51.17	-44.23	494.
Range: Delay 75m, Spacing 30m, Gates 100	hn/jmp (dB)	-2.30	2.26	-0.06	-8.69	13.7
Ave. Pulses: 84, Rng/Prof Aspect@90m/s: 11.1	vn/jmp (dB)	-2.54	2.32	-0.06	-8.64	13.9



IHOP 2002 (dual-antenna config, modes 1,3,4,7) Data (cal: 55.0,50.0)

W2002-05-24-20-49-36 - PPMAG4
 IRIG:1,UTC: 20:49:22.25 to 21:14:11.17, Dur: 1489s
 TimeLngth: 1488.92s, TimeInt: 29ms (33.4pps)
 TimeCor=-13.0s, DSPDif(mn,mx,min):29,28,666
 PPS(min,max,std): 18,36,2.04
 Prof: 232 to 50008, NumProf(t/r): 49776/33134
 ProcTime/Recs: 20:49:22-21:05:46/0-33133
 MxAcQtime: 33ms; DRate: 187.1KB/s; Flags: 0, 0, 0
 Pulse: 275ns, IFilt: 5.0MHz; ppPol: HH HV VV
 TxPol: HHVV, PRF: 20 10 20 10 kHz
 Range: Delay 75m, Spacing 30m, Gates 100
 Ave. Pulses: 84, Rng/Prof Aspect@90m/s: 11.1

	Min	Max	Mean	Std	Varc%
hhN(dB)	-66.22	-62.92	-64.54	-74.68	9.7
vvN(dB)	-66.46	-62.97	-64.58	-74.67	9.8
hhL(dB)	-22.35	-7.14	-10.59	-14.73	38.5
vvL(dB)	-35.46	-8.96	-15.00	-14.79	105.
ppN(m/s)	-12.63	12.56	-0.01	4.15	
ppT(m/s)	-99.77	99.19	-0.12	32.76	
hh/vv(dB)	-NaN	Inf	Inf	-NaN	-NaN
vh/hh(dB)	-NaN	-28.48	-48.11	-39.68	696.
hv/vv(dB)	-NaN	-33.32	-51.17	-44.23	494.
hh_jmp(dB)	-2.30	2.26	-0.06	-8.69	13.7
vv_jmp(dB)	-2.54	2.32	-0.06	-8.64	13.9



IHOP 2002 (dual-antenna config, modes 1,3,4,7) Data (cal: 55.0,50.0)

W2002-05-24-20-49-36 - PPMAG4
 IRIG:1,UTC: 20:49:22.25 to 21:14:11.17, Dur: 1489s
 TimeLngth: 1488.92s, TimeInt: 29ms (33.4pps)
 TimeCor=-13.0s, DSPDif(mn,mx,min):29,28,666
 PPS(min,max,std): 18,36,2.04
 Prof: 232 to 50008, NumProf(t/r): 49776/33134
 ProcTime/Recs: 20:49:22-21:05:46/0-33133
 MxACQtime: 33ms; DRate: 187.1KB/s; Flags: 0, 0, 0
 Pulse: 275ns, IFfilt: 5.0MHz; ppPol: HH HV VV
 TxPol: HHVV, PRF: 20 10 20 10 kHz
 Range: Delay 75m, Spacing 30m, Gates 100
 Ave. Pulses: 84, Rng/Prof Aspect@90m/s: 11.1

	Min	Max	Mean	Std	Varc%
hhN(dB)	-66.22	-62.92	-64.54	-74.68	9.7
vvN(dB)	-66.46	-62.97	-64.58	-74.67	9.8
hhL(dB)	-22.35	-7.14	-10.59	-14.73	38.5
vvL(dB)	-35.46	-8.96	-15.00	-14.79	105.
ppN(m/s)	-12.63	12.56	-0.01	4.15	
ppT(m/s)	-99.77	99.19	-0.12	32.76	
hh/vv(dB)	-NaN	Inf	Inf	-NaN	-NaN
vh/hh(dB)	-NaN	-28.48	-48.11	-39.68	696.
hv/vv(dB)	-NaN	-33.32	-51.17	-44.23	494.
hnjmp(dB)	-2.30	2.26	-0.06	-8.69	13.7
vnjmp(dB)	-2.54	2.32	-0.06	-8.64	13.9