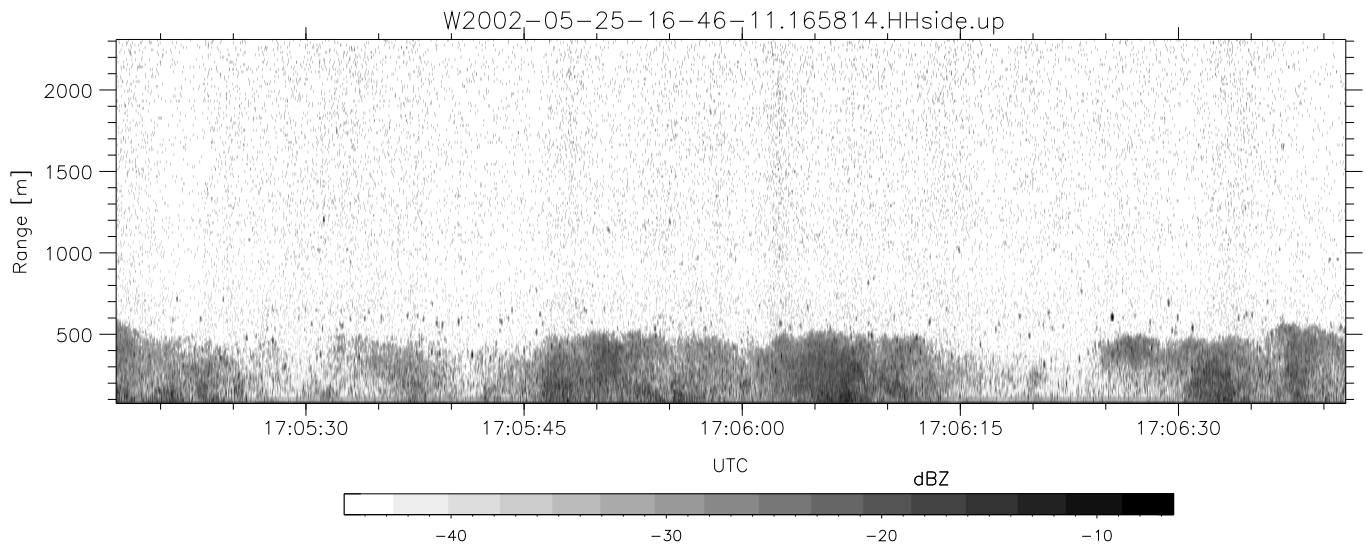
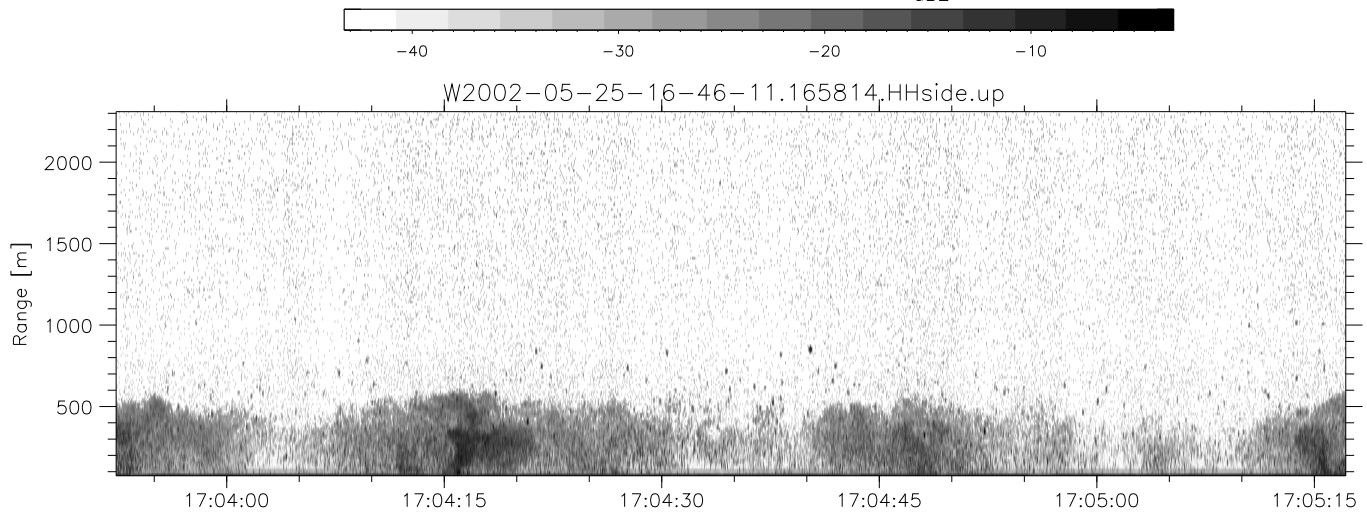
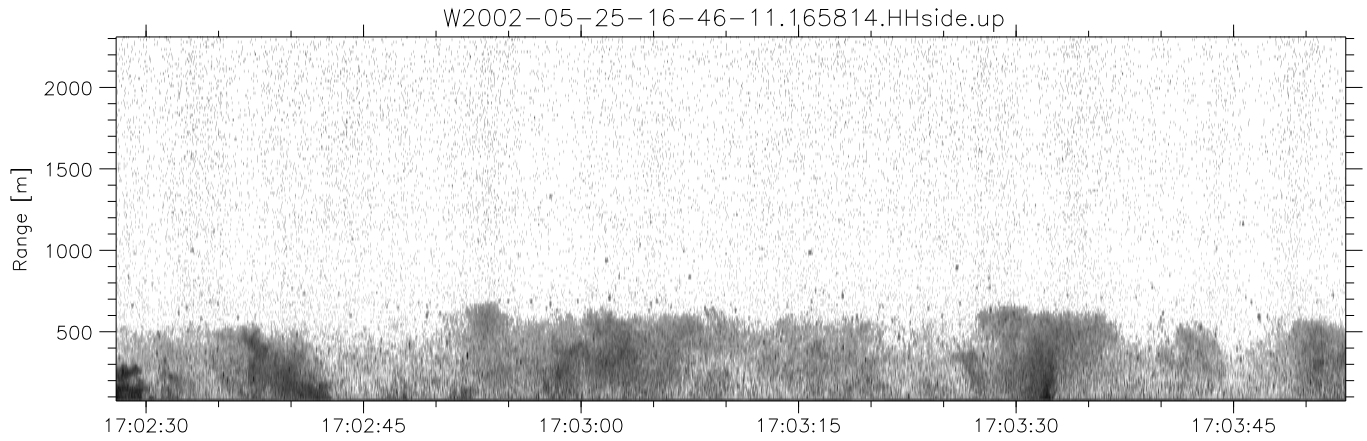


IHOP 2002 (dual-antenna config, modes 1,3,4,7) Data (cal: 49.0,50.0)

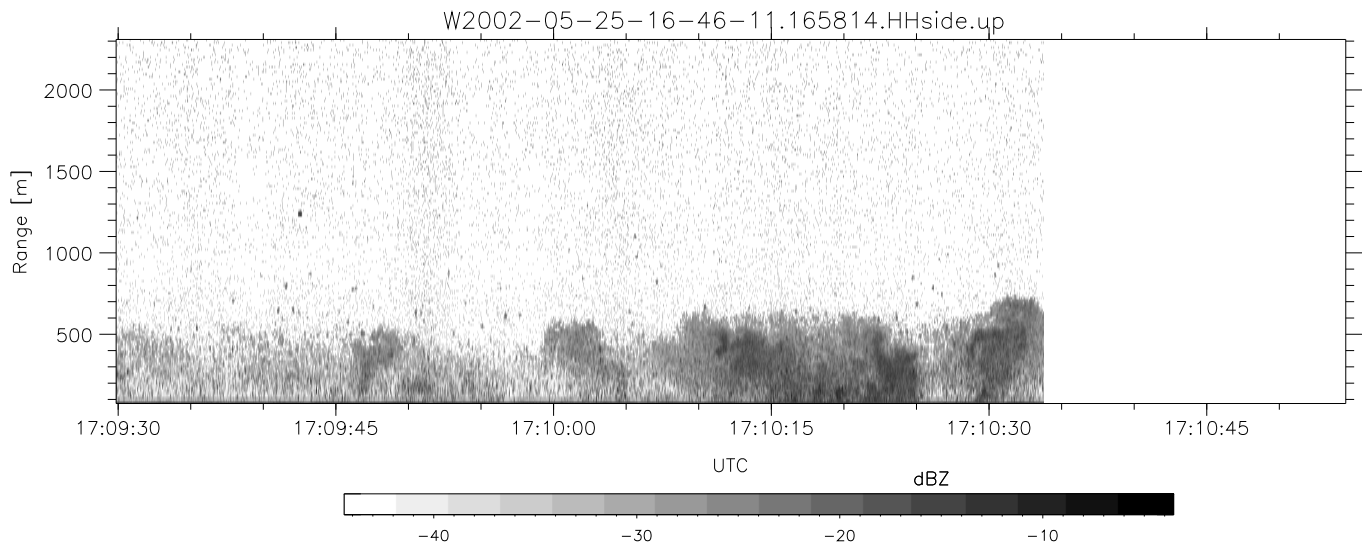
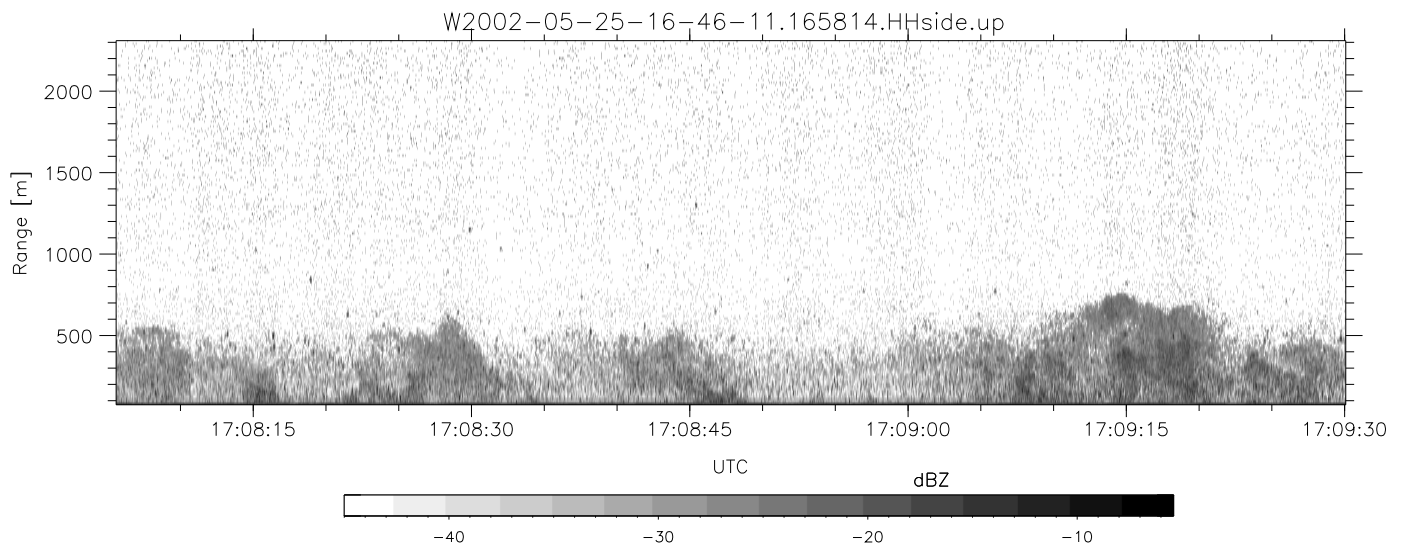
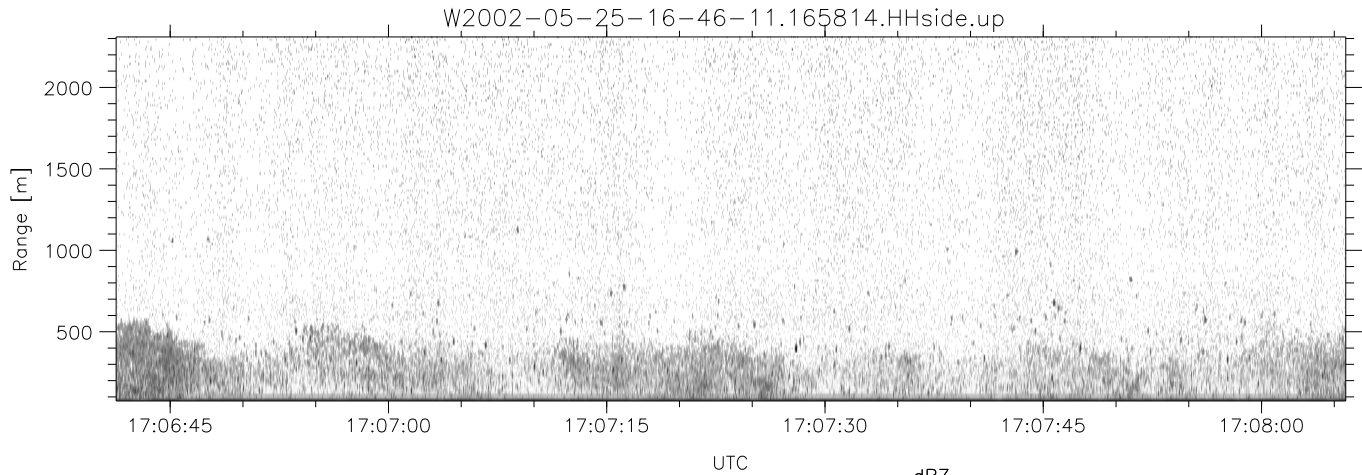
W2002-05-25-16-46-11 - SPPMAG
 IRIG:1,UTC: 16:45:56.49 to 18:00:09.82, Dur: 4453s
 TimeLngth: 4453.33s, TimeInt: 25ms (38.8pps)
 TimeCor=-13.0s, DSPDif(mn,mx,min):24,20,254
 PPS(min,max,std): 32,42,2.95
 Prof: 13166 to 186034, NumProf(t/r): 172868/28616
 ProcTime/Recs: 16:58:14-17:10:33/28616-57231
 MxACQtime: 17ms; DRate: 93.0KB/s; Flags: 0, 0, 0
 Pulse: 275ns, IFfilt: 5.0MHz; ppPol: HH
 TxPol: H, PRF: 20 kHz
 Range: Delay 75m, Spacing 15m, Gates 150
 Ave. Pulses: 348, Rng/Prof Aspect@90m/s: 6.5

	Min	Max	Mean	Std	Varc%
hhN (dB)	-66.96	-65.02	-66.00	-78.45	5.7
vvN (dB)	-66.87	-64.96	-65.90	-78.55	5.4
hhL (dB)	-22.84	-6.98	-10.45	-15.06	34.6
vhL (dB)	-25.05	-8.29	-11.06	-16.59	28.0
ppN (m/s)	-15.80	15.80	0.01	9.10	
ppT (m/s)	-0.03	0.03	-0.00	0.01	
vh/hh (dB)	-NaN	3.15	-10.02	-5.86	261.
hnjmp (dB)	-1.29	0.93	-0.10	-11.77	6.8
vnjmp (dB)	-1.18	1.06	-0.10	-11.71	6.9



IHOP 2002 (dual-antenna config, modes 1,3,4,7) Data (cal: 49.0,50.0)

W2002-05-25-16-46-11 - SPPMAG						
IRIG:1,UTC: 16:45:56.49 to 18:00:09.82, Dur: 4453s	hhN (dB)	Min	Max	Mean	Std	Varc%
TimeLngth: 4453.33s, TimeInt: 25ms (38.8pps)	vvN (dB)	-66.96	-65.02	-66.00	-78.45	5.7
TimeCor=-13.0s, DSPDif(mn,mx,min):24,20,254	hhL (dB)	-66.87	-64.96	-65.90	-78.55	5.4
PPS(min,max,std): 32,42,2.95	vhL (dB)	-22.84	-6.98	-10.45	-15.06	34.6
Prof: 13166 to 186034, NumProf(t/r): 172868/28616	ppN (m/s)	-25.05	-8.29	-11.06	-16.59	28.0
ProcTime/Recs: 16:58:14-17:10:33/28616-57231	ppT (m/s)	-15.80	15.80	0.01	9.10	
MxACQtime: 17ms; DRate: 93.0KB/s; Flags: 0, 0, 0	vh/hh (dB)	-0.03	0.03	-0.00	0.01	
Pulse: 275ns, IFilt: 5.0MHz; ppPol: HH	hn/jmp (dB)	-NaN	3.15	-10.02	-5.86	261.
TxPol: H, PRF: 20 kHz	hn/jmp (dB)	-1.29	0.93	-0.10	-11.77	6.8
Range: Delay 75m, Spacing 15m, Gates 150	vn/jmp (dB)	-1.18	1.06	-0.10	-11.71	6.9
Ave. Pulses: 348, Rng/Prof Aspect@90m/s: 6.5						



IHOP 2002 (dual-antenna config, modes 1,3,4,7) Data (cal: 49.0,50.0)

W2002-05-25-16-46-11 - SPPMAG	Min	Max	Mean	Std	Varc%	
IRIG:1,UTC: 16:45:56.49 to 18:00:09.82, Dur: 4453s	hhN (dB)	-66.96	-65.02	-66.00	-78.45	5.7
TimeLngth: 4453.33s, TimeInt: 25ms (38.8pps)	vvN (dB)	-66.87	-64.96	-65.90	-78.55	5.4
TimeCor=-13.0s, DSPDif(mn,mx,min):24,20,254	hhL (dB)	-22.84	-6.98	-10.45	-15.06	34.6
PPS(min,max,std): 32,42,2.95	vhL (dB)	-25.05	-8.29	-11.06	-16.59	28.0
Prof: 13166 to 186034, NumProf(t/r): 172868/28616	ppN (m/s)	-15.80	15.80	0.01	9.10	
ProcTime/Recs: 16:58:14-17:10:33/28616-57231	ppT (m/s)	-0.03	0.03	-0.00	0.01	
MxACQtime: 17ms; DRate: 93.0KB/s; Flags: 0, 0, 0	vh/hh (dB)	-NaN	3.15	-10.02	-5.86	261.
Pulse: 275ns, IFfilt: 5.0MHz; ppPol: HH	hn_jmp (dB)	-1.29	0.93	-0.10	-11.77	6.8
TxPol: H, PRF: 20 kHz	vn_jmp (dB)	-1.18	1.06	-0.10	-11.71	6.9
Range: Delay 75m, Spacing 15m, Gates 150						
Ave. Pulses: 348, Rng/Prof Aspect@90m/s: 6.5						