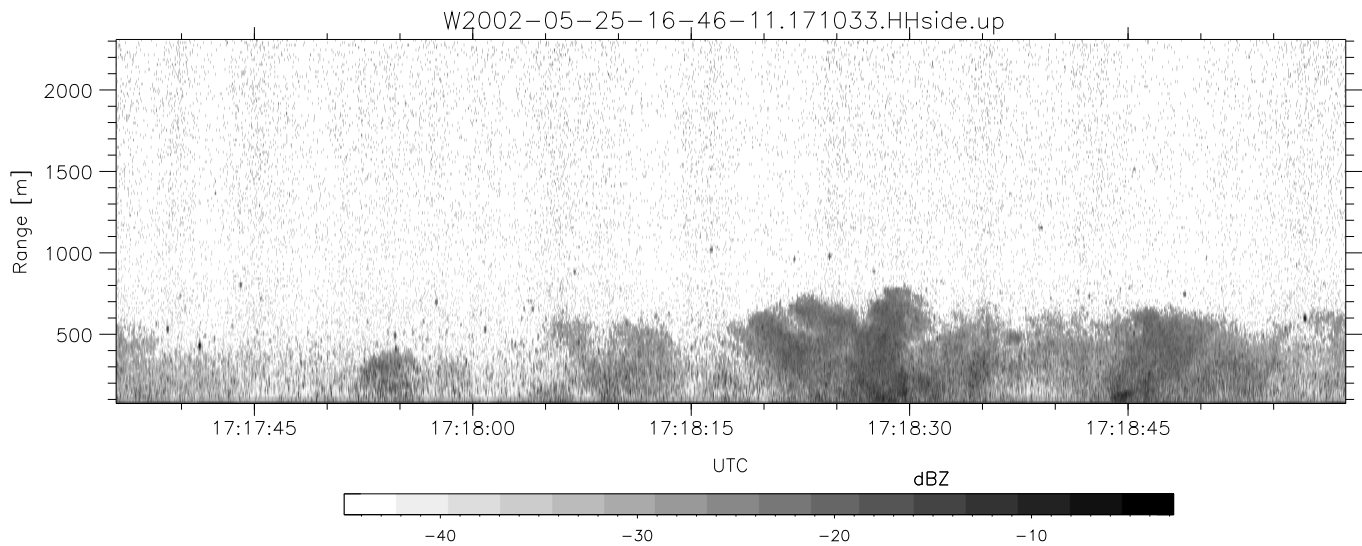
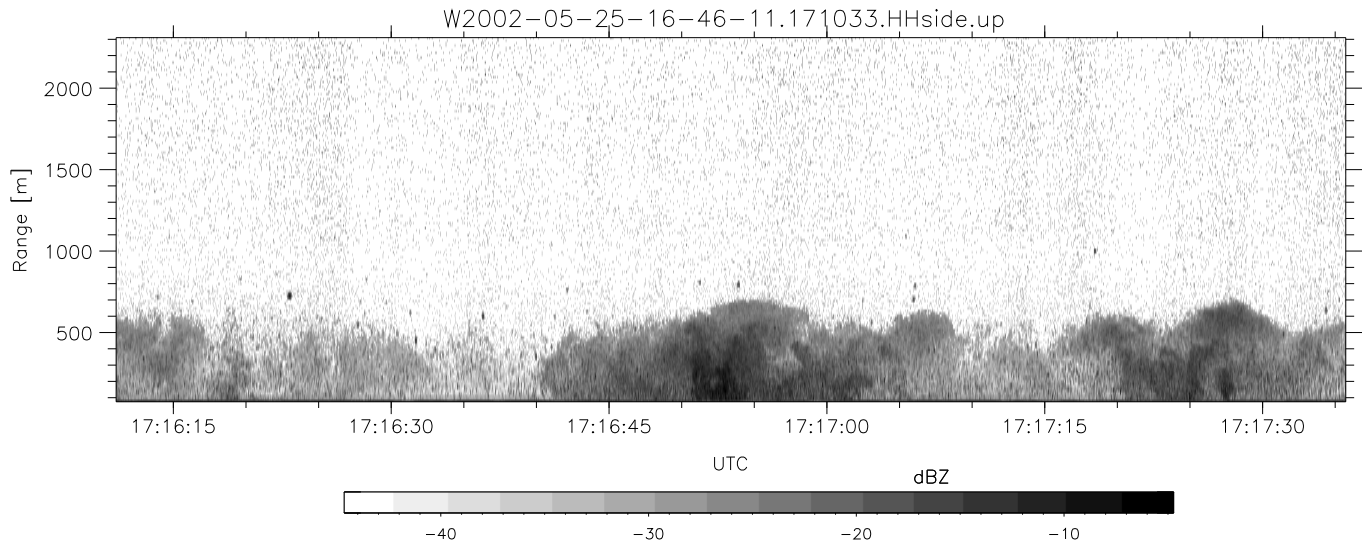
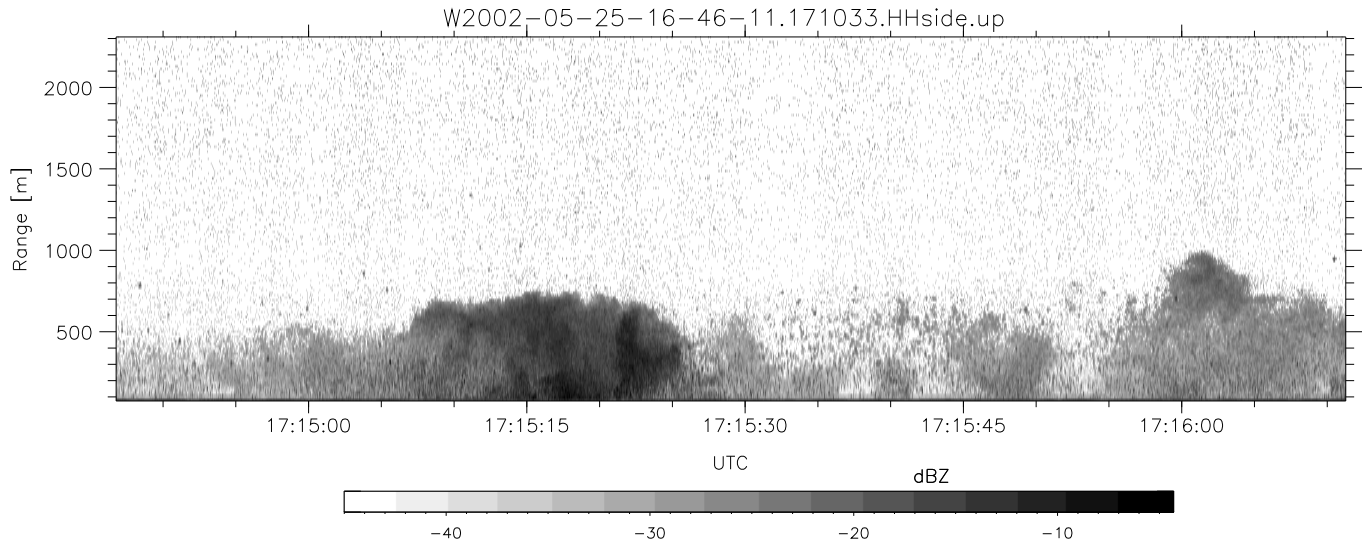


IHOP 2002 (dual-antenna config, modes 1,3,4,7) Data (cal: 49.0,50.0)

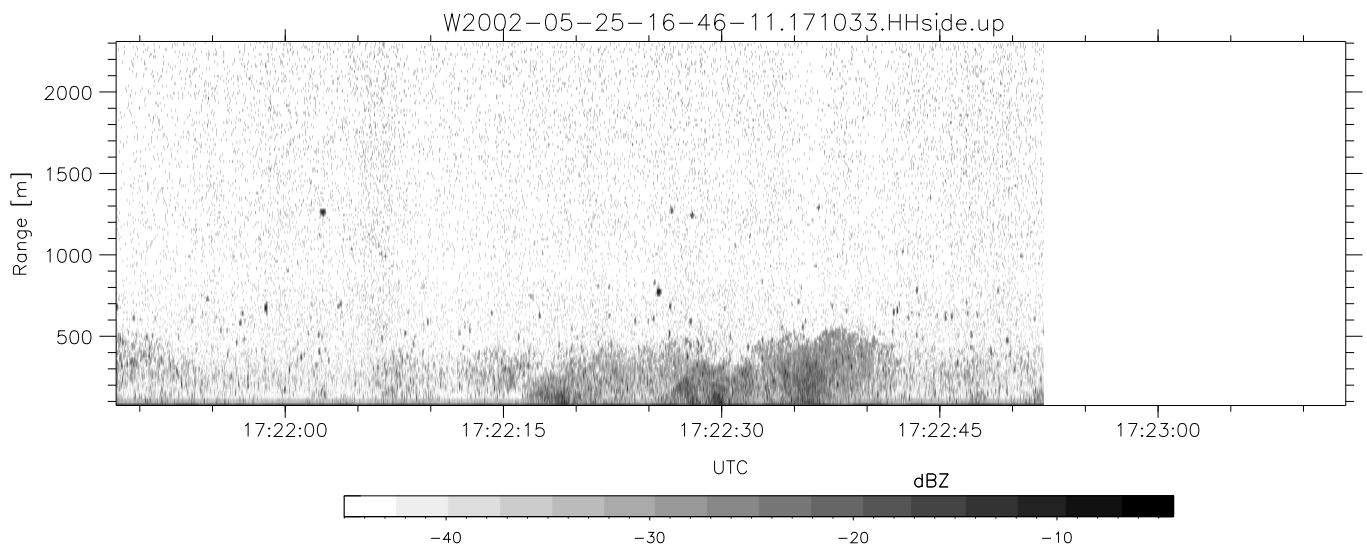
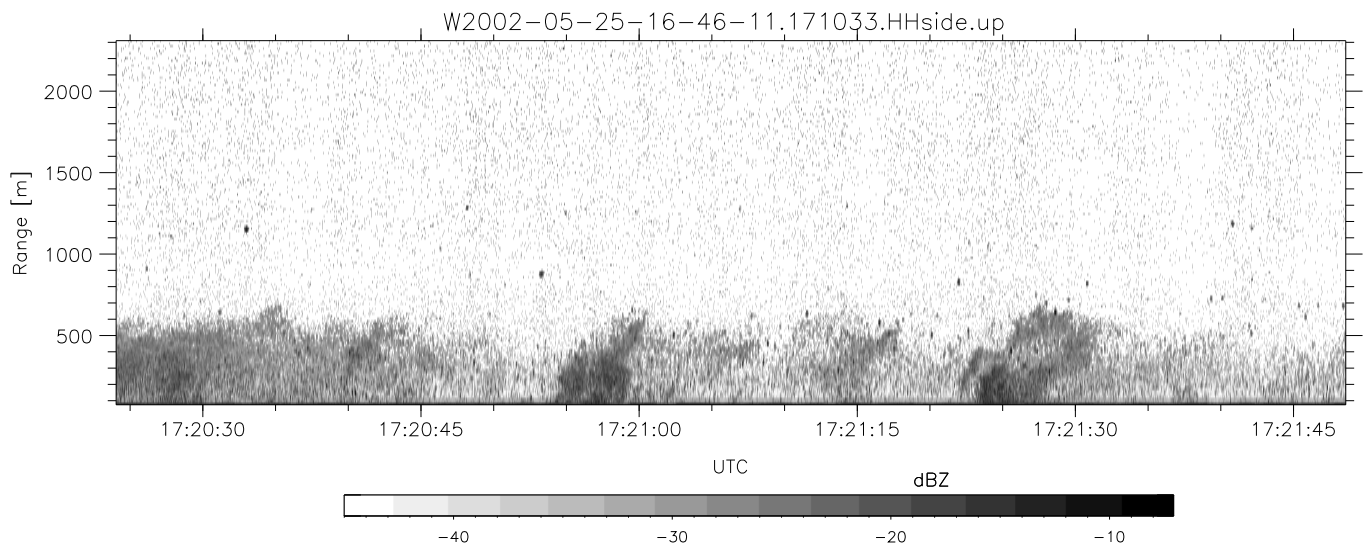
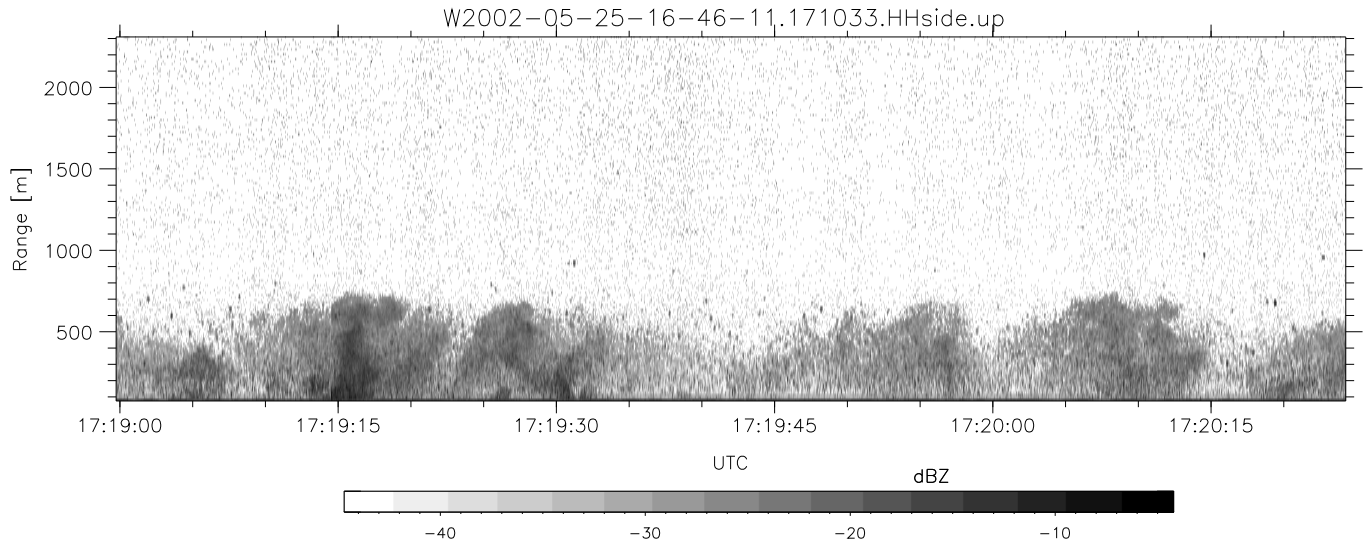
W2002-05-25-16-46-11 - SPPMAG	Min	Max	Mean	Std	Varc%	
IRIG:1,UTC: 16:45:56.49 to 18:00:09.82, Dur: 4453s	hhN(dB)	-66.69	-64.76	-65.67	-78.52	5.2
TimeLngth: 4453.33s, TimeInt: 25ms (38.8pps)	vvN(dB)	-66.61	-64.66	-65.57	-78.27	5.4
TimeCor=-13.0s, DSPDif(mn,mx,min):24,20,254	hhL(dB)	-16.26	-6.38	-9.18	-14.50	29.4
PPS(min,max,std): 32,42,2.99	vhL(dB)	-19.98	-7.98	-10.68	-15.66	31.8
Prof: 13166 to 186034, NumProf(t/r): 172868/28616	ppN(m/s)	-15.80	15.80	0.08	9.06	
ProcTime/Recs: 17:10:33-17:22:52/57232-85847	ppT(m/s)	-0.03	0.02	-0.00	0.00	
MxACQtime: 17ms; DRate: 93.0KB/s; Flags: 0, 0, 0	vh/hh(dB)	-NaN	-1.39	-11.55	-9.00	179.
Pulse: 275ns, IFfilt: 5.0MHz; ppPol: HH	hn_jmp(dB)	-1.16	0.94	-0.10	-11.82	6.7
TxPol: H, PRF: 20 kHz	vn_jmp(dB)	-1.42	1.05	-0.10	-11.72	6.9
Range: Delay 75m, Spacing 15m, Gates 150						
Ave. Pulses: 348, Rng/Prof Aspect@90m/s: 6.5						



IHOP 2002 (dual-antenna config, modes 1,3,4,7) Data (cal: 49.0,50.0)

W2002-05-25-16-46-11 - SPPMAG
 IRIG:1,UTC: 16:45:56.49 to 18:00:09.82, Dur: 4453s
 TimeLngth: 4453.33s, TimeInt: 25ms (38.8pps)
 TimeCor=-13.0s, DSPDif(mn,mx,min):24,20,254
 PPS(min,max,std): 32,42,2.99
 Prof: 13166 to 186034, NumProf(t/r): 172868/28616
 ProcTime/Recs: 17:10:33-17:22:52/57232-85847
 MxACQtime: 17ms; DRate: 93.0KB/s; Flags: 0, 0, 0
 Pulse: 275ns, IFfilt: 5.0MHz; ppPol: HH
 TxPol: H, PRF: 20 kHz
 Range: Delay 75m, Spacing 15m, Gates 150
 Ave. Pulses: 348, Rng/Prof Aspect@90m/s: 6.5

	Min	Max	Mean	Std	Varc%
hhN (dB)	-66.69	-64.76	-65.67	-78.52	5.2
vvN (dB)	-66.61	-64.66	-65.57	-78.27	5.4
hhL (dB)	-16.26	-6.38	-9.18	-14.50	29.4
vhL (dB)	-19.98	-7.98	-10.68	-15.66	31.8
ppN (m/s)	-15.80	15.80	0.08	9.06	
ppT (m/s)	-0.03	0.02	-0.00	0.00	
vh/hh (dB)	-NaN	-1.39	-11.55	-9.00	179.
hnjmp (dB)	-1.16	0.94	-0.10	-11.82	6.7
vnjmp (dB)	-1.42	1.05	-0.10	-11.72	6.9



IHOP 2002 (dual-antenna config, modes 1,3,4,7) Data (cal: 49.0,50.0)

W2002-05-25-16-46-11 - SPPMAG
 IRIG:1,UTC: 16:45:56.49 to 18:00:09.82, Dur: 4453s
 TimeLngth: 4453.33s, TimeInt: 25ms (38.8pps)
 TimeCor=-13.0s, DSPDif(mn,mx,min):24,20,254
 PPS(min,max,std): 32,42,2.99
 Prof: 13166 to 186034, NumProf(t/r): 172868/28616
 ProcTime/Recs: 17:10:33-17:22:52/57232-85847
 MxACQtime: 17ms; DRate: 93.0KB/s; Flags: 0, 0, 0
 Pulse: 275ns, IFfilt: 5.0MHz; ppPol: HH
 TxPol: H, PRF: 20 kHz
 Range: Delay 75m, Spacing 15m, Gates 150
 Ave. Pulses: 348, Rng/Prof Aspect@90m/s: 6.5

	Min	Max	Mean	Std	Varc%
hhN(dB)	-66.69	-64.76	-65.67	-78.52	5.2
vvN(dB)	-66.61	-64.66	-65.57	-78.27	5.4
hhL(dB)	-16.26	-6.38	-9.18	-14.50	29.4
vhL(dB)	-19.98	-7.98	-10.68	-15.66	31.8
ppN(m/s)	-15.80	15.80	0.08	9.06	
ppT(m/s)	-0.03	0.02	-0.00	0.00	
vh/hh(dB)	-NaN	-1.39	-11.55	-9.00	179.
hnjmp(dB)	-1.16	0.94	-0.10	-11.82	6.7
vnjmp(dB)	-1.42	1.05	-0.10	-11.72	6.9