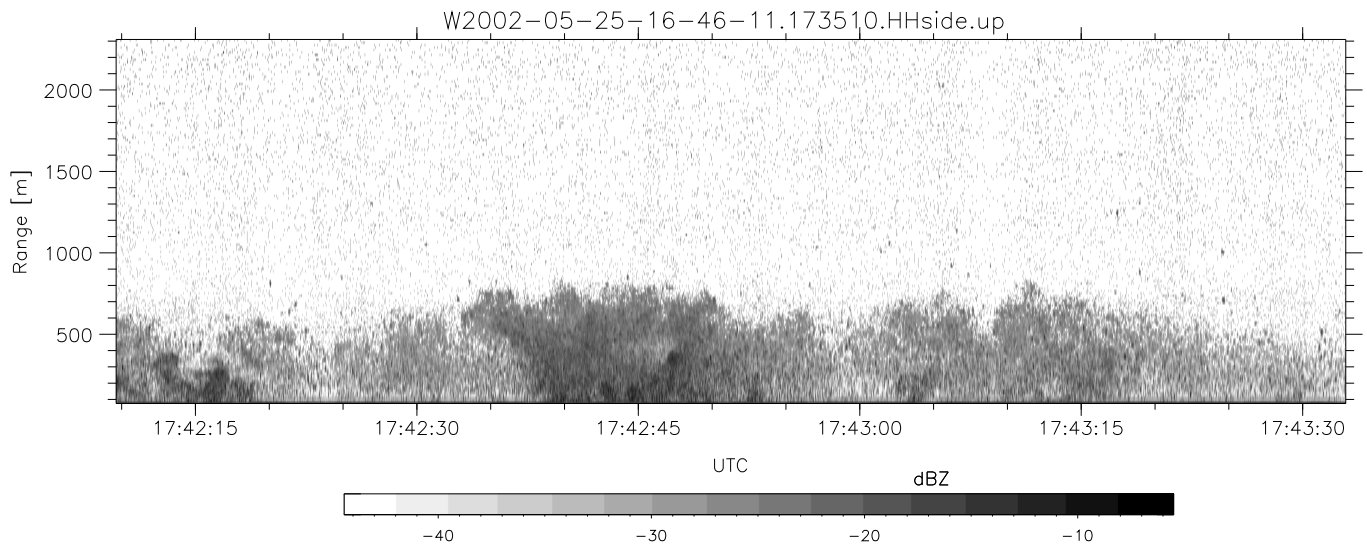
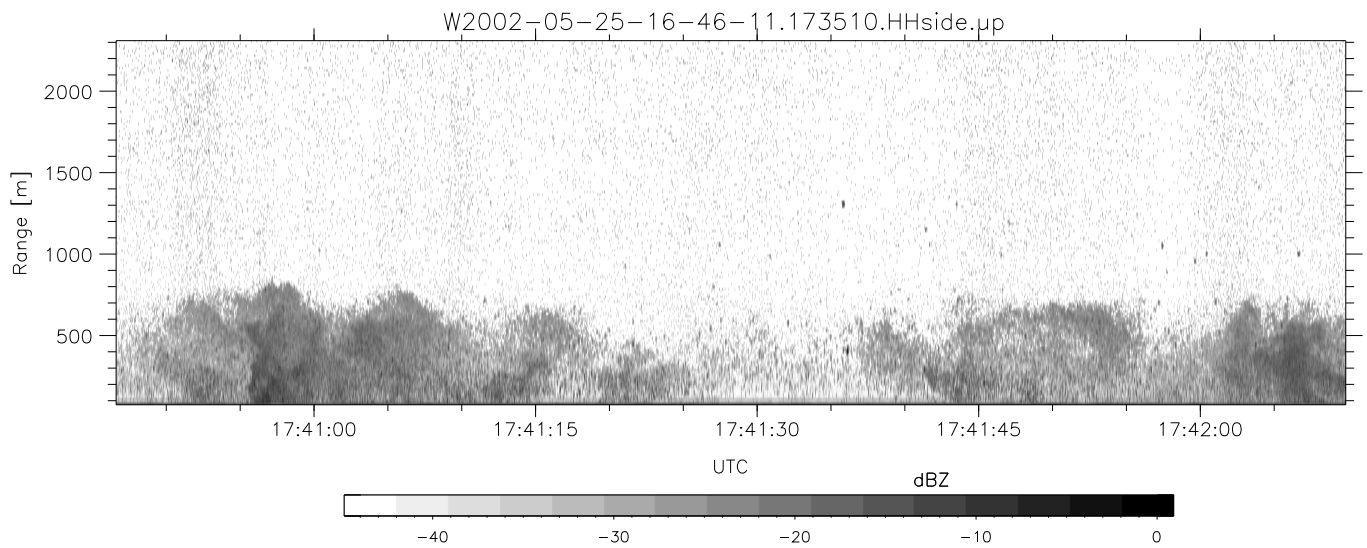
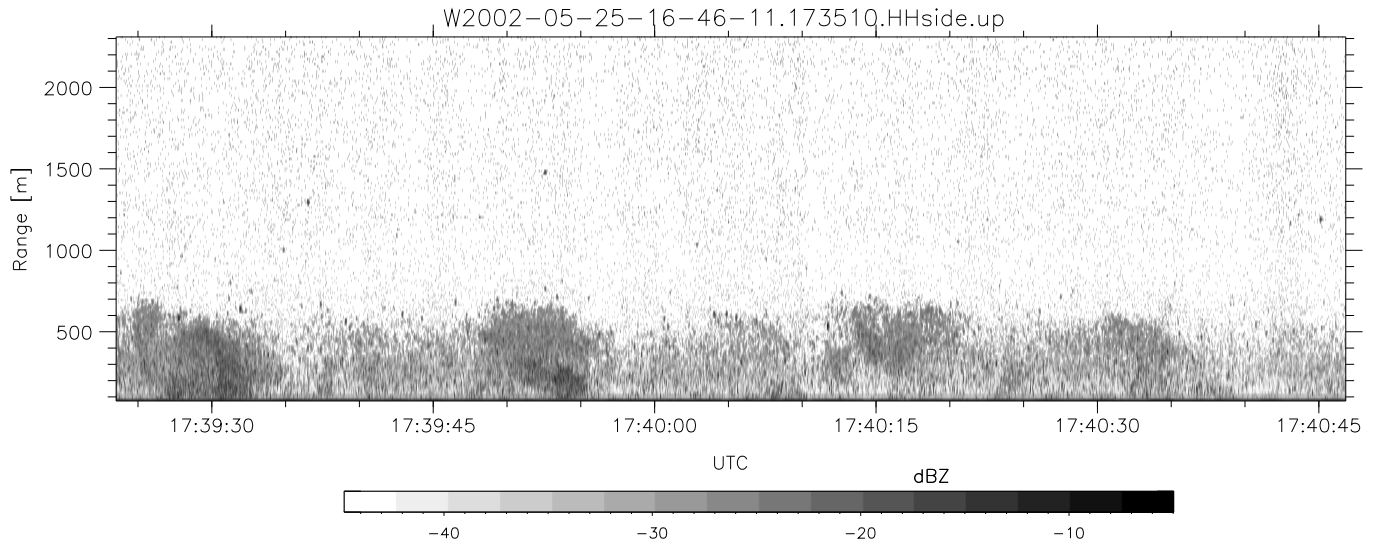


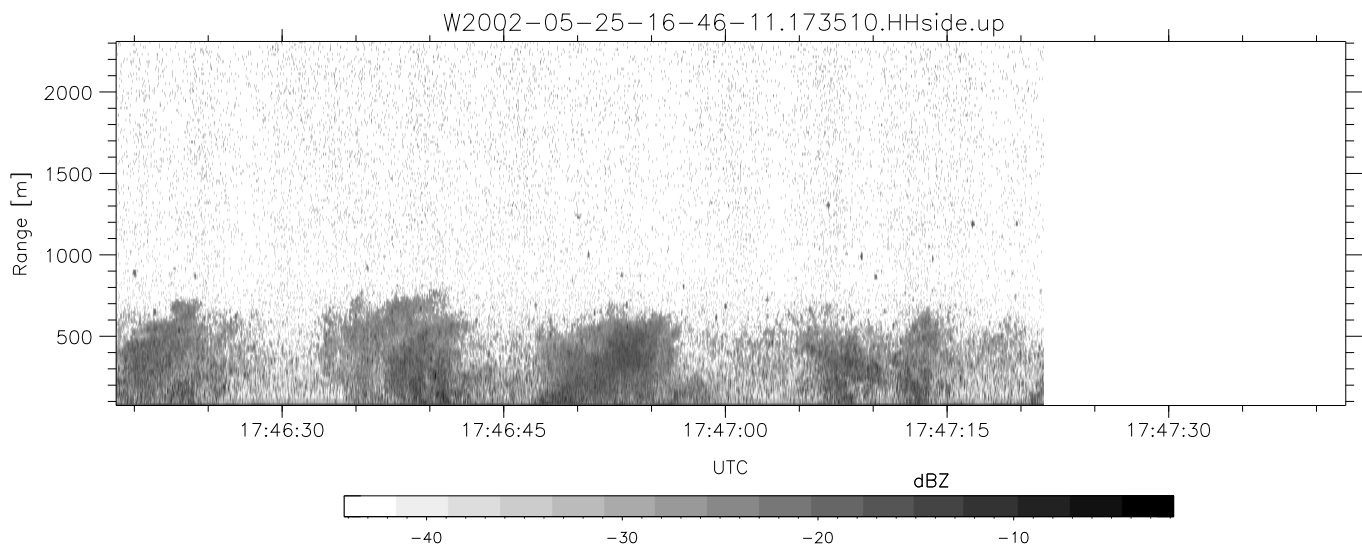
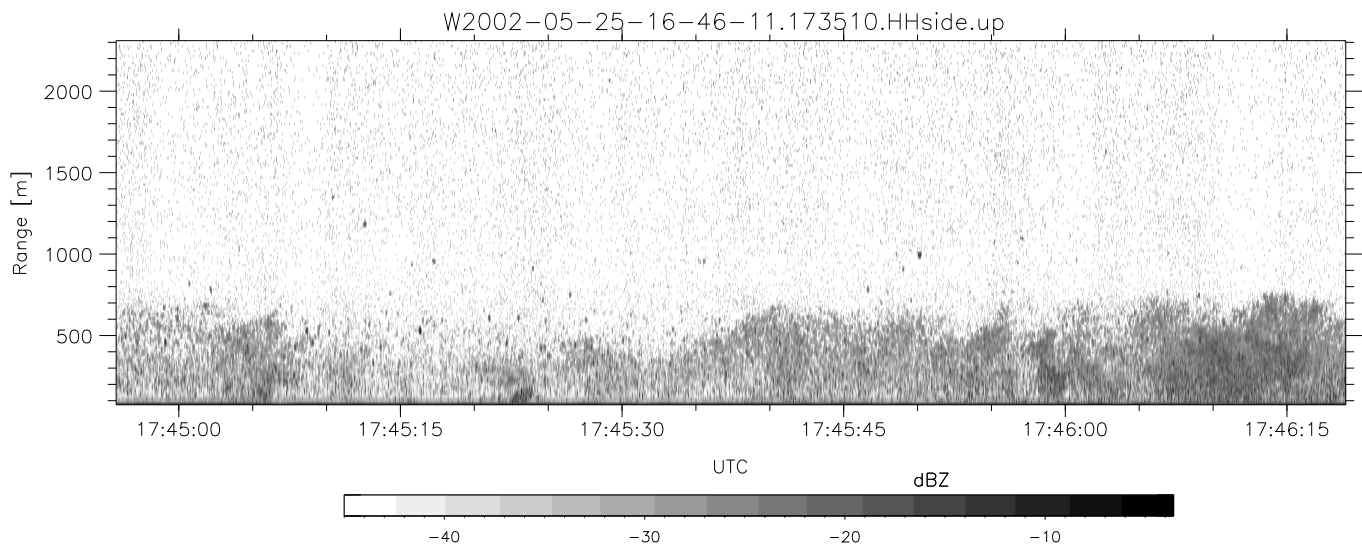
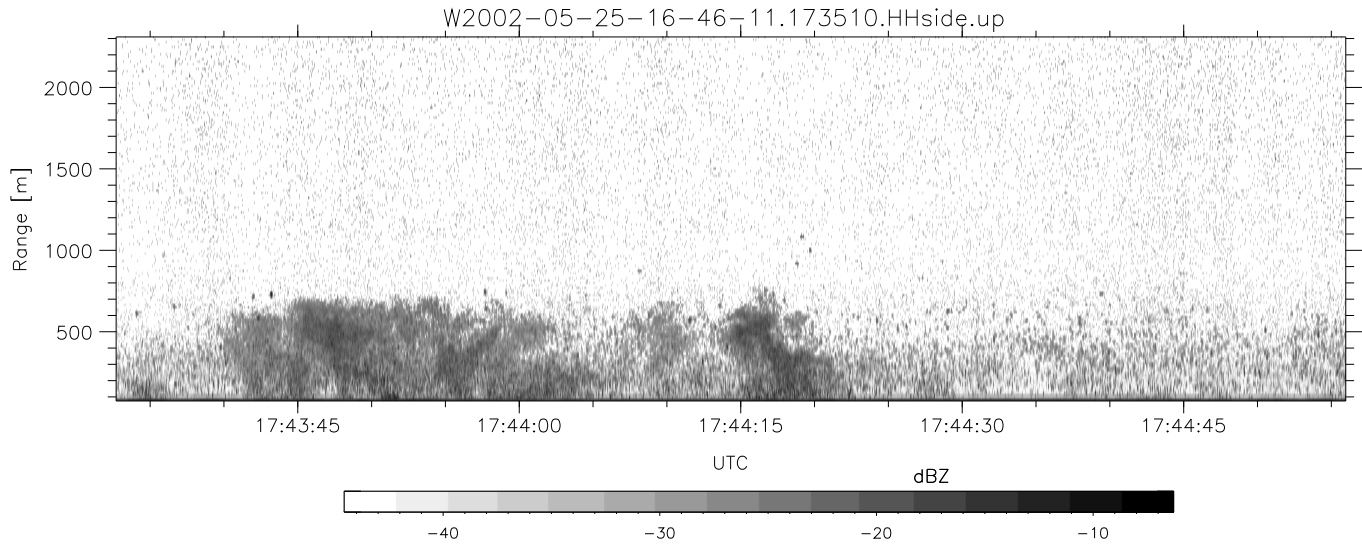
IHOP 2002 (dual-antenna config, modes 1,3,4,7) Data (cal: 49.0,50.0)

W2002-05-25-16-46-11 - SPPMAG	Min	Max	Mean	Std	Varc%	
IRIG:1,UTC: 16:45:56.49 to 18:00:09.82, Dur: 4453s	hhN (dB)	-66.30	-64.57	-65.38	-78.43	5.0
TimeLngth: 4453.33s, TimeInt: 25ms (38.8pps)	vvN (dB)	-66.09	-64.39	-65.18	-78.20	5.0
TimeCor=-13.0s, DSPDif(mn,mx,min):24,20,252	hhL (dB)	-16.27	-5.95	-9.25	-14.69	28.6
PPS(min,max,std): 32,42,2.61	vhL (dB)	-19.61	-7.57	-10.67	-15.99	29.4
Prof: 13166 to 186034, NumProf(t/r): 172868/28616	ppN (m/s)	-15.80	15.80	-0.03	9.07	
ProcTime/Recs: 17:35:10-17:47:21/114464-143079	ppT (m/s)	-0.02	0.02	-0.00	0.01	
MxACQtime: 17ms; DRate: 93.0KB/s; Flags: 0, 0, 0	vh/hh (dB)	-NaN	-9.62	-25.51	-19.84	368.
Pulse: 275ns, IFfilt: 5.0MHz; ppPol: HH	hn_jmp (dB)	-1.30	0.92	-0.10	-11.83	6.7
TxPol: H, PRF: 20 kHz	vn_jmp (dB)	-1.33	1.12	-0.09	-11.74	6.8
Range: Delay 75m, Spacing 15m, Gates 150						
Ave. Pulses: 348, Rng/Prof Aspect@90m/s: 6.5						



IHOP 2002 (dual-antenna config, modes 1,3,4,7) Data (cal: 49.0,50.0)

W2002-05-25-16-46-11 - SPPMAG	Min	Max	Mean	Std	Varc%	
IRIG:1,UTC: 16:45:56.49 to 18:00:09.82, Dur: 4453s	hhN(dB)	-66.30	-64.57	-65.38	-78.43	5.0
TimeLngth: 4453.33s, TimeInt: 25ms (38.8pps)	vvN(dB)	-66.09	-64.39	-65.18	-78.20	5.0
TimeCor=-13.0s, DSPDif(mn,mx,min):24,20,252	hhL(dB)	-16.27	-5.95	-9.25	-14.69	28.6
PPS(min,max,std): 32,42,2.61	vhL(dB)	-19.61	-7.57	-10.67	-15.99	29.4
Prof: 13166 to 186034, NumProf(t/r): 172868/28616	ppN(m/s)	-15.80	15.80	-0.03	9.07	
ProcTime/Recs: 17:35:10-17:47:21/114464-143079	ppT(m/s)	-0.02	0.02	-0.00	0.01	
MxACQtime: 17ms; DRate: 93.0KB/s; Flags: 0, 0, 0	vh/hh(dB)	-NaN	-9.62	-25.51	-19.84	368.
Pulse: 275ns, IFfilt: 5.0MHz; ppPol: HH	hn_jmp(dB)	-1.30	0.92	-0.10	-11.83	6.7
TxPol: H, PRF: 20 kHz	vn_jmp(dB)	-1.33	1.12	-0.09	-11.74	6.8
Range: Delay 75m, Spacing 15m, Gates 150						
Ave. Pulses: 348, Rng/Prof Aspect@90m/s: 6.5						



IHOP 2002 (dual-antenna config, modes 1,3,4,7) Data (cal: 49.0,50.0)

W2002-05-25-16-46-11 - SPPMAG
 IRIG:1,UTC: 16:45:56.49 to 18:00:09.82, Dur: 4453s
 TimeLngth: 4453.33s, TimeInt: 25ms (38.8pps)
 TimeCor=-13.0s, DSPDif(mn,mx,min):24,20,252
 PPS(min,max,std): 32,42,2.61
 Prof: 13166 to 186034, NumProf(t/r): 172868/28616
 ProcTime/Recs: 17:35:10-17:47:21/114464-143079
 MxACQtime: 17ms; DRate: 93.0KB/s; Flags: 0, 0, 0
 Pulse: 275ns, IFfilt: 5.0MHz; ppPol: HH
 TxPol: H, PRF: 20 kHz
 Range: Delay 75m, Spacing 15m, Gates 150
 Ave. Pulses: 348, Rng/Prof Aspect@90m/s: 6.5

	Min	Max	Mean	Std	Varc%
hhN(dB)	-66.30	-64.57	-65.38	-78.43	5.0
vvN(dB)	-66.09	-64.39	-65.18	-78.20	5.0
hhL(dB)	-16.27	-5.95	-9.25	-14.69	28.6
vhL(dB)	-19.61	-7.57	-10.67	-15.99	29.4
ppN(m/s)	-15.80	15.80	-0.03	9.07	
ppT(m/s)	-0.02	0.02	-0.00	0.01	
vh/hh(dB)	-NaN	-9.62	-25.51	-19.84	368.
hnjmp(dB)	-1.30	0.92	-0.10	-11.83	6.7
vnjmp(dB)	-1.33	1.12	-0.09	-11.74	6.8