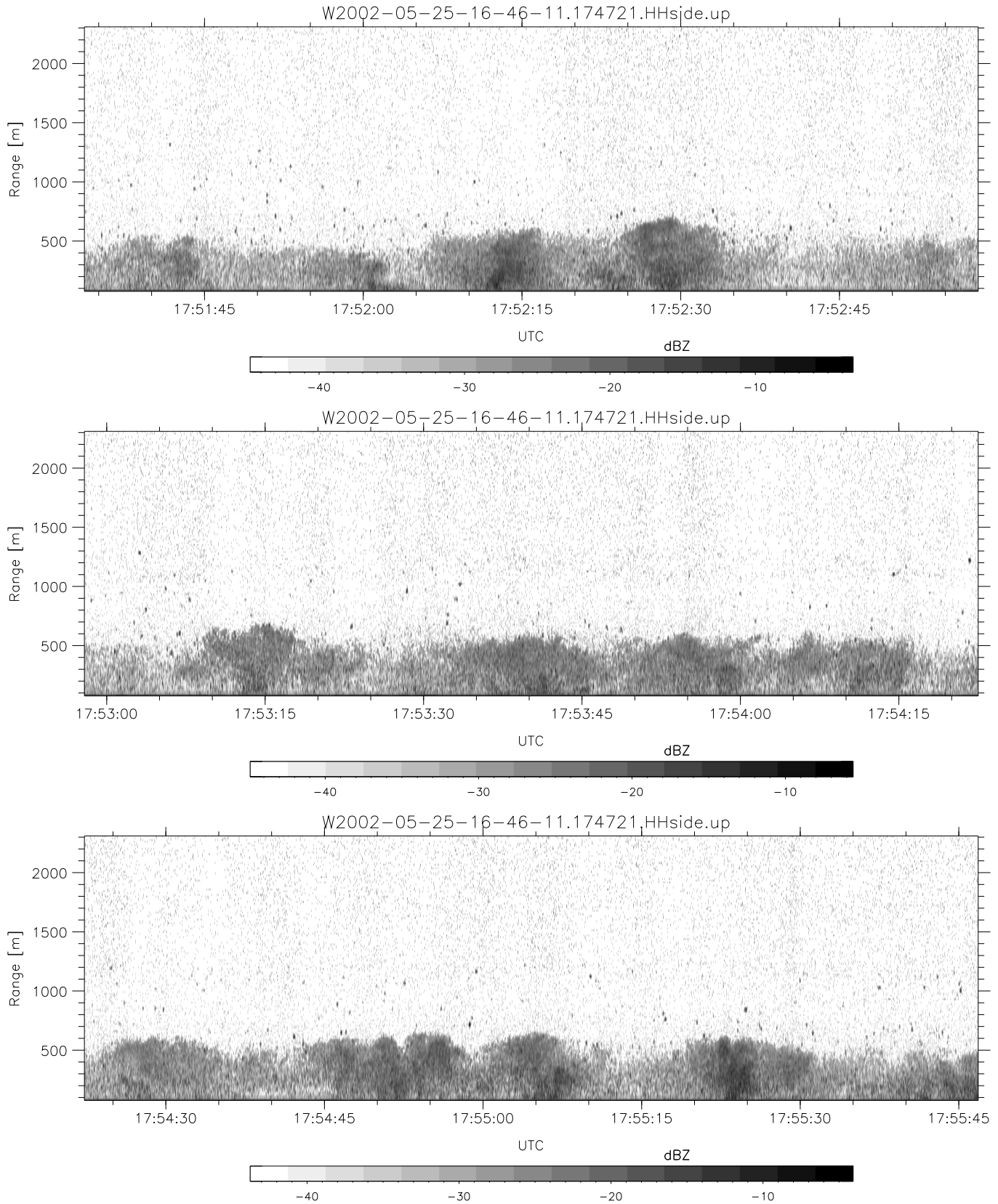


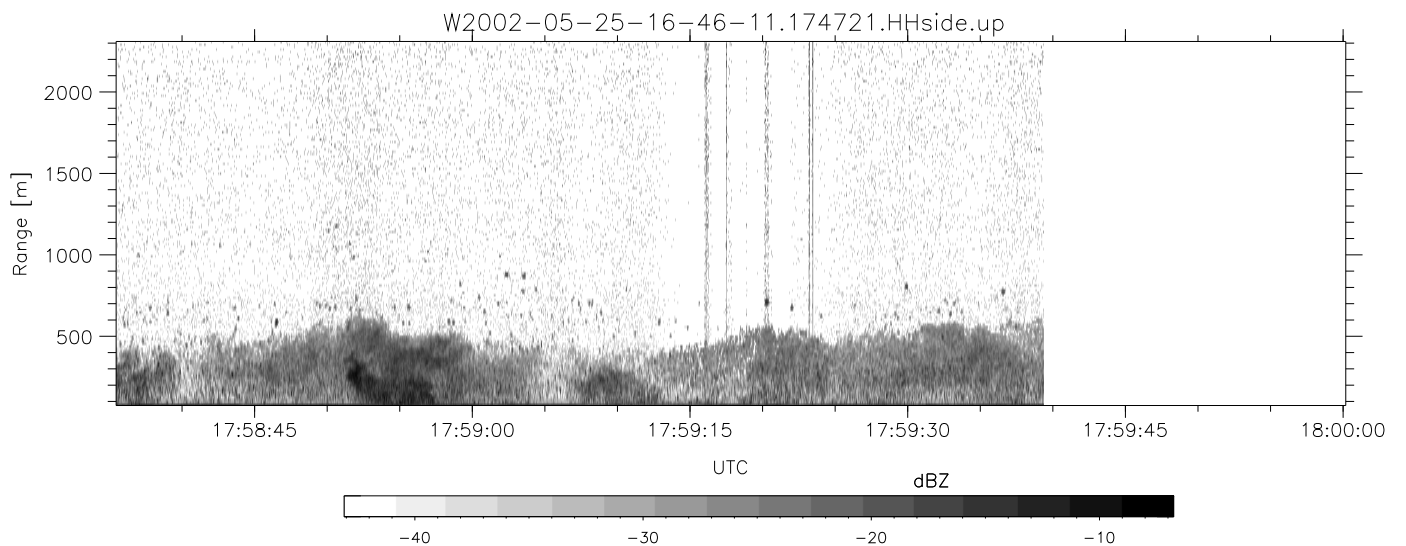
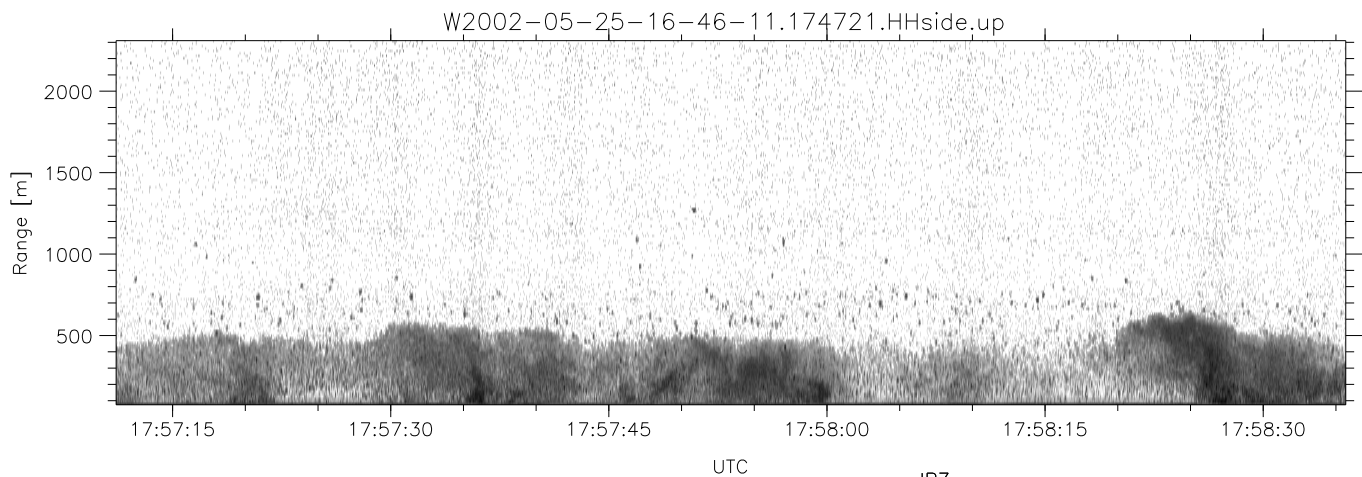
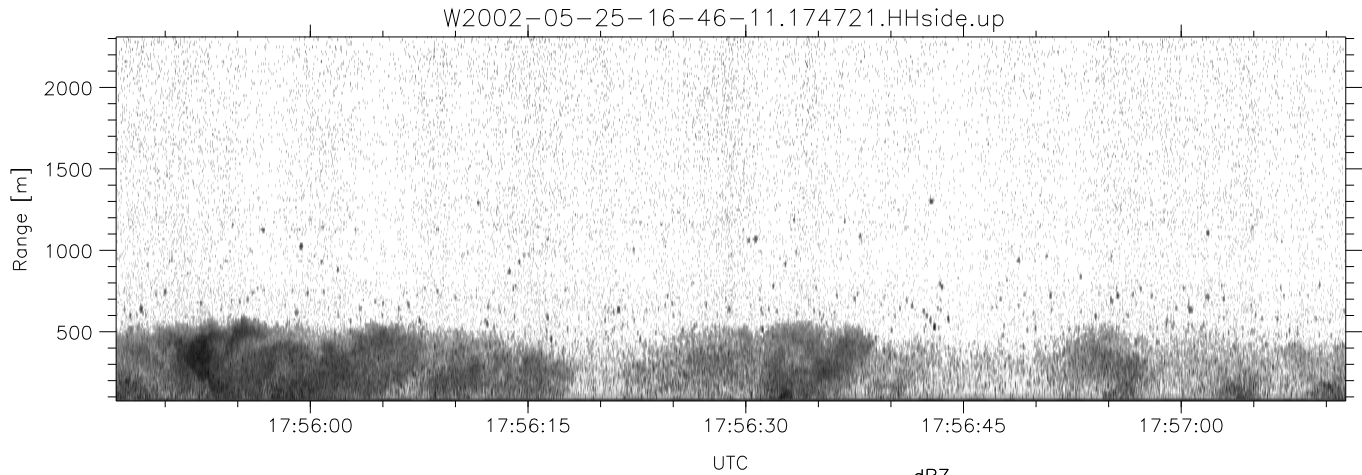
IHOP 2002 (dual-antenna config, modes 1,3,4,7) Data (cal: 49.0,50.0)

W2002-05-25-16-46-11 - SPPMAG	Min	Max	Mean	Std	Varc%	
IRIG:1,UTC: 16:45:56.49 to 18:00:09.82, Dur: 4453s	hhN (dB)	-66.21	-63.08	-65.31	-77.95	5.4
TimeLngth: 4453.33s, TimeInt: 25ms (38.8pps)	vvN (dB)	-66.05	-62.66	-65.10	-77.72	5.5
TimeCor=-13.0s, DSPDif(mn,mx,min):24,20,259	hhL (dB)	-15.11	-5.78	-9.31	-14.99	27.1
PPS(min,max,std): 32,42,2.99	vhL (dB)	-18.25	-7.47	-10.84	-16.31	28.4
Prof: 13166 to 186034, NumProf(t/r): 172868/28616	ppN (m/s)	-15.80	15.80	0.08	9.09	
ProcTime/Recs: 17:47:21-17:59:39/143080-171695	ppT (m/s)	-0.02	0.02	-0.00	0.00	
MxACQtime: 17ms; DRate: 93.0KB/s; Flags: 0, 0, 0	vh/hh (dB)	-NaN	0.65	-15.61	-9.80	380.
Pulse: 275ns, IFfilt: 5.0MHz; ppPol: HH	hn_jmp (dB)	-1.26	1.10	-0.10	-11.78	6.8
TxPol: H, PRF: 20 kHz	vn_jmp (dB)	-1.25	1.34	-0.10	-11.74	6.9
Range: Delay 75m, Spacing 15m, Gates 150						
Ave. Pulses: 348, Rng/Prof Aspect@90m/s: 6.5						



IHOP 2002 (dual-antenna config, modes 1,3,4,7) Data (cal: 49.0,50.0)

W2002-05-25-16-46-11 - SPPMAG						
IRIG:1,UTC: 16:45:56.49 to 18:00:09.82, Dur: 4453s	hhN (dB)	Min	Max	Mean	Std	Varc%
TimeLngth: 4453.33s, TimeInt: 25ms (38.8pps)	vvN (dB)	-66.21	-63.08	-65.31	-77.95	5.4
TimeCor=-13.0s, DSPDif(mn,mx,min):24,20,259	hhL (dB)	-66.05	-62.66	-65.10	-77.72	5.5
PPS(min,max,std): 32,42,2.99	vhL (dB)	-15.11	-5.78	-9.31	-14.99	27.1
Prof: 13166 to 186034, NumProf(t/r): 172868/28616	ppN (m/s)	-18.25	-7.47	-10.84	-16.31	28.4
ProcTime/Recs: 17:47:21-17:59:39/143080-171695	ppT (m/s)	-15.80	15.80	0.08	9.09	
MxAcQtime: 17ms; DRate: 93.0KB/s; Flags: 0, 0, 0	vh/hh (dB)	-0.02	0.02	-0.00	0.00	
Pulse: 275ns, IFilt: 5.0MHz; ppPol: HH	vn/jmp (dB)	-NaN	0.65	-15.61	-9.80	380.
TxPol: H, PRF: 20 kHz	hn/jmp (dB)	-1.26	1.10	-0.10	-11.78	6.8
Range: Delay 75m, Spacing 15m, Gates 150	vn/jmp (dB)	-1.25	1.34	-0.10	-11.74	6.9
Ave. Pulses: 348, Rng/Prof Aspect@90m/s: 6.5						



IHOP 2002 (dual-antenna config, modes 1,3,4,7) Data (cal: 49.0,50.0)

W2002-05-25-16-46-11 - SPPMAG						
IRIG:1,UTC: 16:45:56.49 to 18:00:09.82, Dur: 4453s	hhN (dB)	Min	Max	Mean	Std	Varc%
TimeLngth: 4453.33s, TimeInt: 25ms (38.8pps)	vvN (dB)	-66.21	-63.08	-65.31	-77.95	5.4
TimeCor=-13.0s, DSPDif(mn,mx,min):24,20,259	hhL (dB)	-66.05	-62.66	-65.10	-77.72	5.5
PPS(min,max,std): 32,42,2.99	vhL (dB)	-15.11	-5.78	-9.31	-14.99	27.1
Prof: 13166 to 186034, NumProf(t/r): 172868/28616	ppT (m/s)	-18.25	-7.47	-10.84	-16.31	28.4
ProcTime/Recs: 17:47:21-17:59:39/143080-171695	ppN (m/s)	-15.80	15.80	0.08	9.09	
MxACQtime: 17ms; DRate: 93.0KB/s; Flags: 0, 0, 0	vn/hh (dB)	-0.02	0.02	-0.00	0.00	
Pulse: 275ns, IFfilt: 5.0MHz; ppPol: HH	vn/jmp (dB)	-NaN	0.65	-15.61	-9.80	380.
TxPol: H, PRF: 20 kHz	hn/jmp (dB)	-1.26	1.10	-0.10	-11.78	6.8
Range: Delay 75m, Spacing 15m, Gates 150	vn/jmp (dB)	-1.25	1.34	-0.10	-11.74	6.9
Ave. Pulses: 348, Rng/Prof Aspect@90m/s: 6.5						