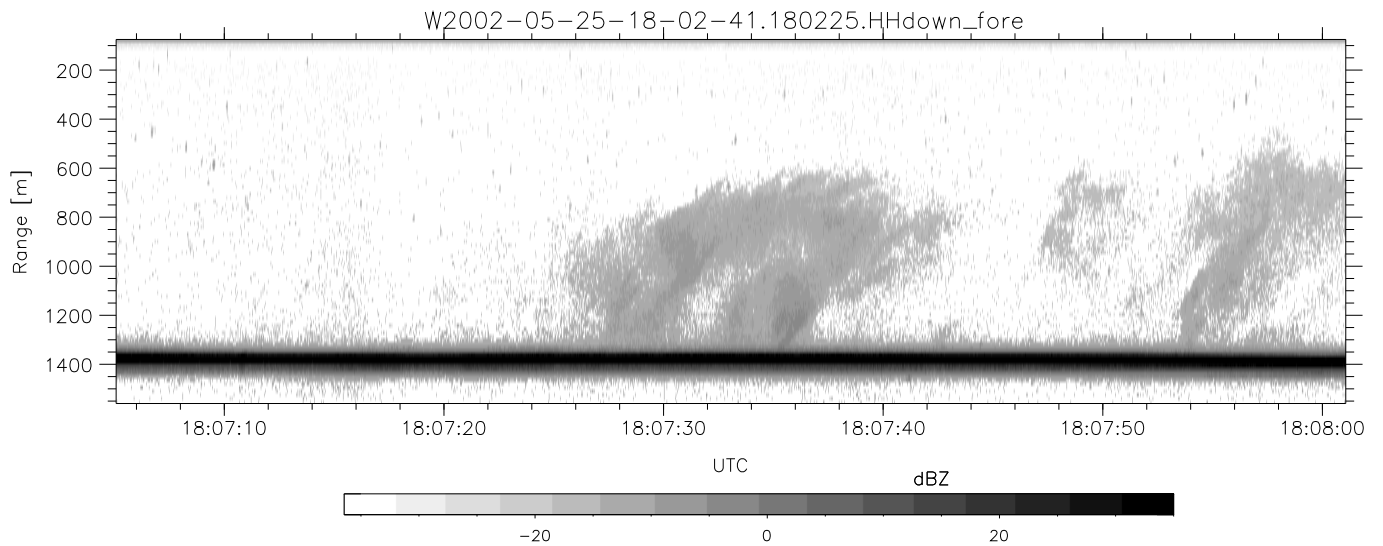
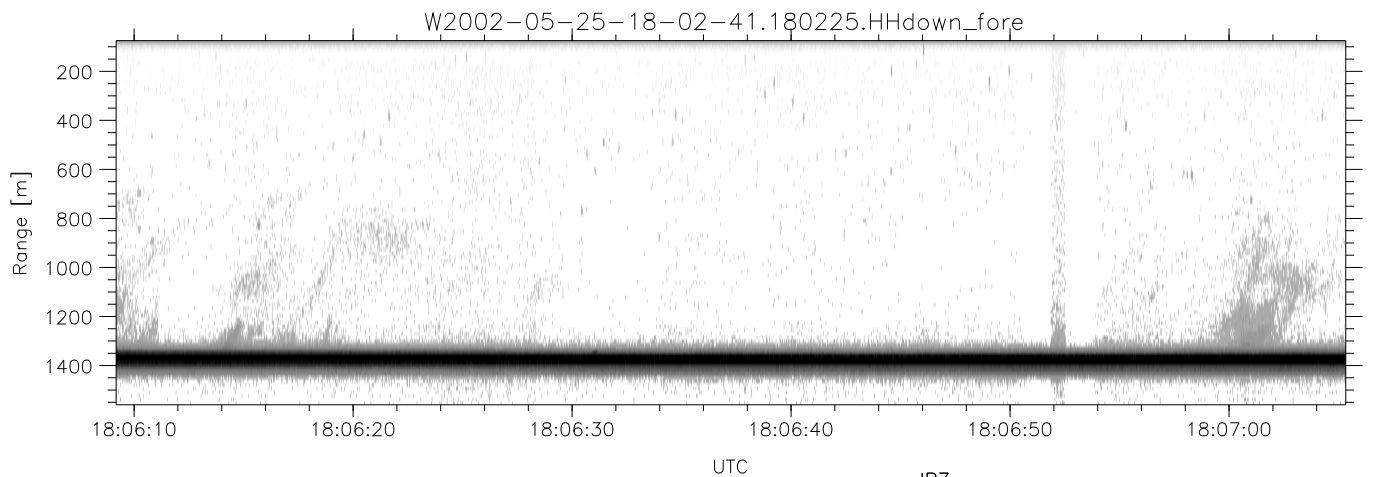
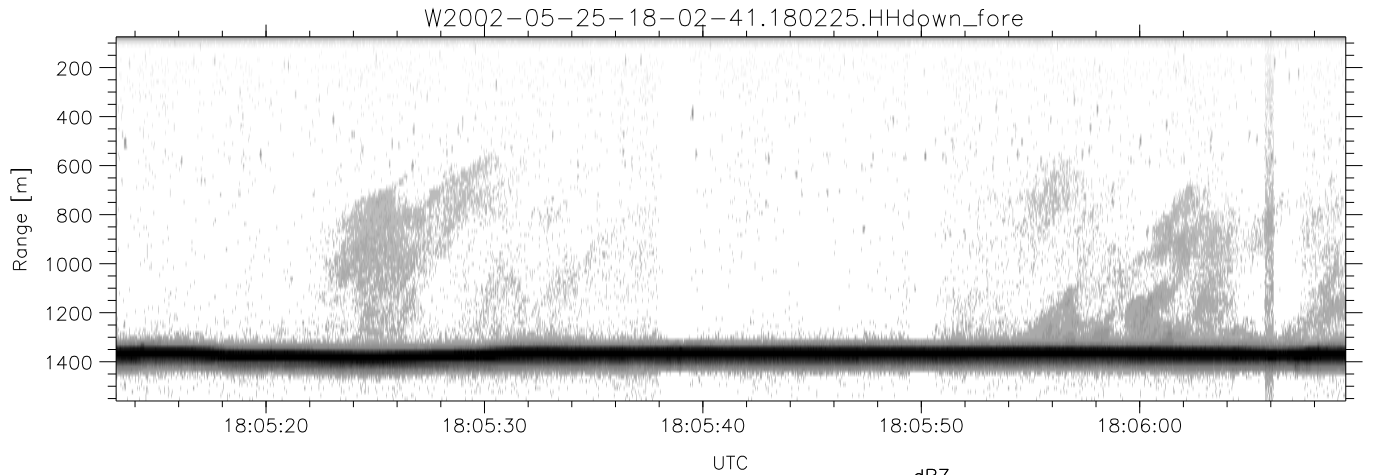


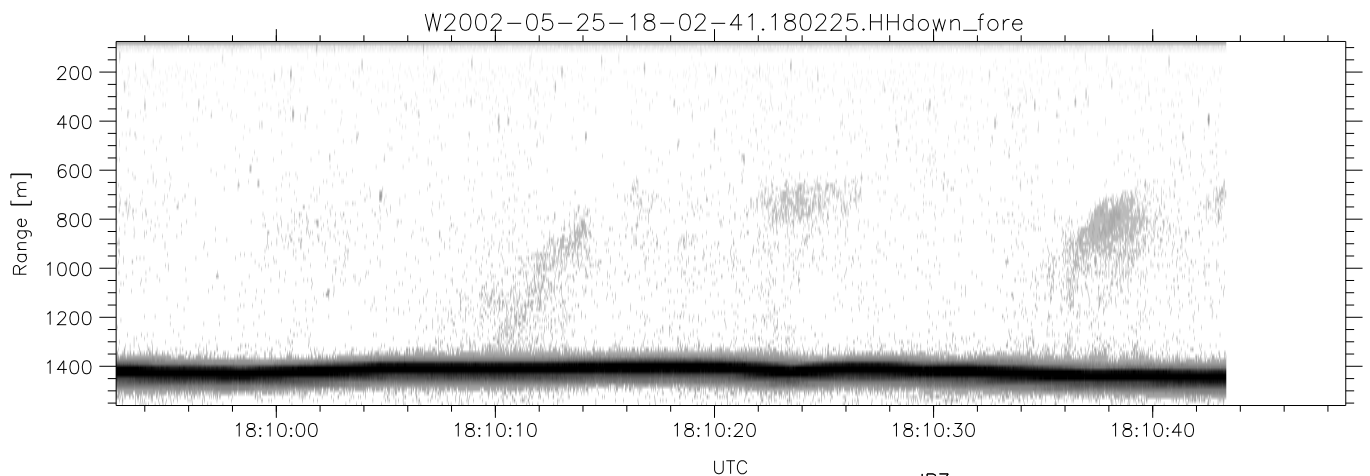
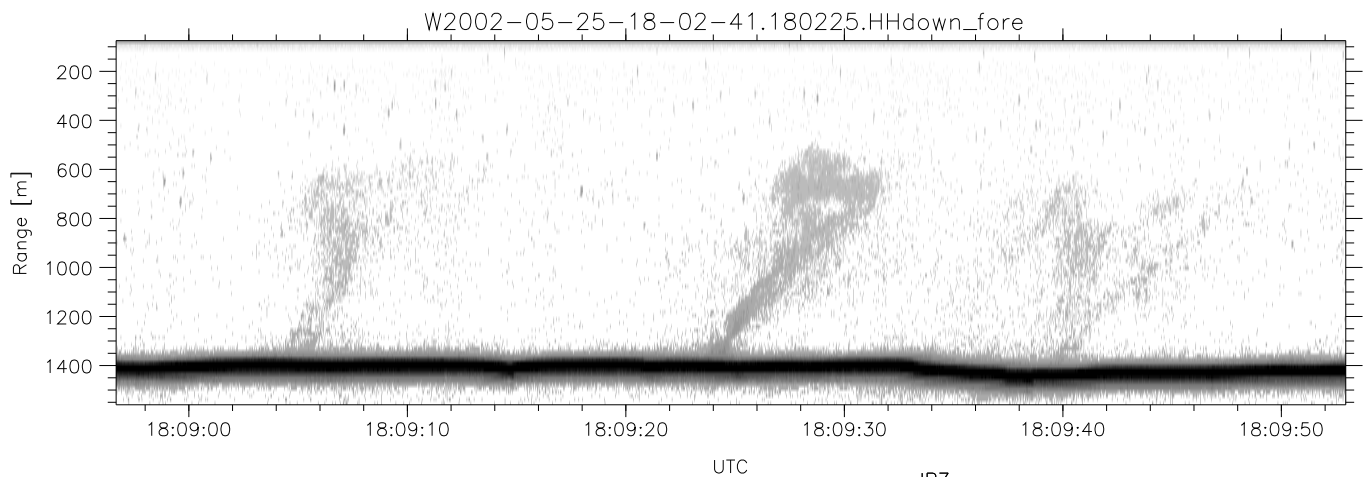
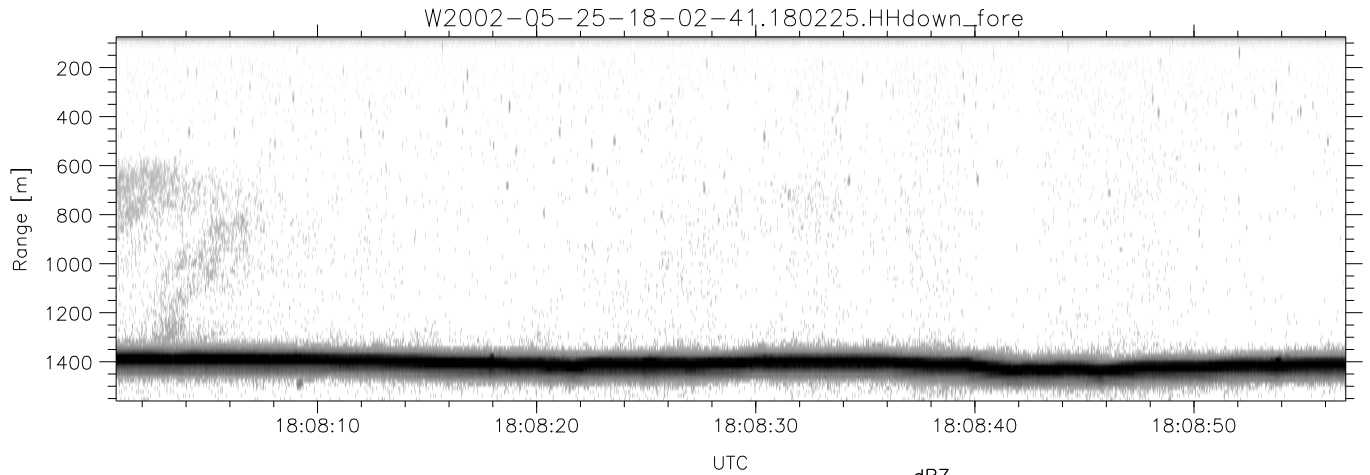
IHOP 2002 (dual-antenna config, modes 1,3,4,7) Data (cal: 55.0,50.0)

W2002-05-25-18-02-41 - PPMAG4	Min	Max	Mean	Std	Varc%	
IRIG:1,UTC: 18:02:25.67 to 18:34:34.50, Dur: 1929s	hhN(dB)	-67.07	-62.77	-64.92	-74.68	10.6
TimeLngth: 1928.83s, TimeInt: 30ms (33.2pps)	vvN(dB)	-67.03	-63.02	-65.00	-74.86	10.3
TimeCor=-13.0s, DSPDif(mn,mx,min):29,28,228	hhL(dB)	-10.85	-8.14	-9.45	-19.04	11.0
PPS(min,max,std): 20,36,2.13	vvL(dB)	-34.65	-13.35	-20.70	-21.39	85.2
Prof: 632 to 64695, NumProf(t/r): 64063/16567	ppN(m/s)	-12.80	12.62	0.15	4.25	
ProcTime/Recs: 18:02:25-18:10:43/0-16566	ppT(m/s)	-101.0	99.69	1.16	33.58	
MxACQtime: 33ms; DRate: 185.9KB/s; Flags: 0, 0, 0	hh/vv(dB)	-NaN	92.26	-NaN	76.08	-132
Pulse: 275ns, IFfilt: 5.0MHz; ppPol: HH HV VV	vh/hh(dB)	-NaN	-27.36	-48.52	-40.56	625.
TxPol: HHVV, PRF: 20 10 20 10 kHz	hv/vv(dB)	-NaN	-27.49	-50.65	-43.76	488.
Range: Delay 75m, Spacing 15m, Gates 100	hnjmp(dB)	-2.18	1.91	-0.08	-8.76	13.6
Ave. Pulses: 84, Rng/Prof Aspect@90m/s: 5.5	vnjmp(dB)	-2.49	2.06	-0.07	-8.69	13.7



IHOP 2002 (dual-antenna config, modes 1,3,4,7) Data (cal: 55.0,50.0)

W2002-05-25-18-02-41 - PPMAG4	Min	Max	Mean	Std	Varc%	
IRIG:1,UTC: 18:02:25.67 to 18:34:34.50, Dur: 1929s	hhN (dB)	-67.07	-62.77	-64.92	-74.68	10.6
TimeLngth: 1928.83s, TimeInt: 30ms (33.2pps)	vvN (dB)	-67.03	-63.02	-65.00	-74.86	10.3
TimeCor=-13.0s, DSPDif(mn,mx,min):29,28,228	hhL (dB)	-10.85	-8.14	-9.45	-19.04	11.0
PPS(min,max,std): 20,36,2.13	vvL (dB)	-34.65	-13.35	-20.70	-21.39	85.2
Prof: 632 to 64695, NumProf(t/r): 64063/16567	ppN (m/s)	-12.80	12.62	0.15	4.25	
ProcTime/Recs: 18:02:25-18:10:43/0-16566	ppT (m/s)	-101.0	99.69	1.16	33.58	
MxACQtime: 33ms; DRate: 185.9KB/s; Flags: 0, 0, 0	hh/vv (dB)	-NaN	92.26	-NaN	76.08	-132
Pulse: 275ns, IFfilt: 5.0MHz; ppPol: HH HV VV	vh/hh (dB)	-NaN	-27.36	-48.52	-40.56	625.
TxPol: HHVV, PRF: 20 10 20 10 kHz	hv/vv (dB)	-NaN	-27.49	-50.65	-43.76	488.
Range: Delay 75m, Spacing 15m, Gates 100	hn_jmp (dB)	-2.18	1.91	-0.08	-8.76	13.6
Ave. Pulses: 84, Rng/Prof Aspect@90m/s: 5.5	vn_jmp (dB)	-2.49	2.06	-0.07	-8.69	13.7



IHOP 2002 (dual-antenna config, modes 1,3,4,7) Data (cal: 55.0,50.0)

W2002-05-25-18-02-41 - PPMAG4  
 IRIG:1,UTC: 18:02:25.67 to 18:34:34.50, Dur: 1929s  
 TimeLngth: 1928.83s, TimeInt: 30ms (33.2pps)  
 TimeCor=-13.0s, DSPDif(mn,mx,min):29,28,228  
 PPS(min,max,std): 20,36,2.13  
 Prof: 632 to 64695, NumProf(t/r): 64063/16567  
 ProcTime/Recs: 18:02:25-18:10:43/0-16566  
 MxACQtime: 33ms; DRate: 185.9KB/s; Flags: 0, 0, 0  
 Pulse: 275ns, IFilt: 5.0MHz; ppPol: HH HV VV  
 TxPol: HHVV, PRF: 20 10 20 10 kHz  
 Range: Delay 75m, Spacing 15m, Gates 100  
 Ave. Pulses: 84, Rng/Prof Aspect@90m/s: 5.5

	Min	Max	Mean	Std	Varc%
hhN(dB)	-67.07	-62.77	-64.92	-74.68	10.6
vvN(dB)	-67.03	-63.02	-65.00	-74.86	10.3
hhL(dB)	-10.85	-8.14	-9.45	-19.04	11.0
vvL(dB)	-34.65	-13.35	-20.70	-21.39	85.2
ppN(m/s)	-12.80	12.62	0.15	4.25	
ppT(m/s)	-101.0	99.69	1.16	33.58	
hh/vv(dB)	-NaN	92.26	-NaN	76.08	-132
vh/hh(dB)	-NaN	-27.36	-48.52	-40.56	625.
hv/vv(dB)	-NaN	-27.49	-50.65	-43.76	488.
hnjmp(dB)	-2.18	1.91	-0.08	-8.76	13.6
vnjmp(dB)	-2.49	2.06	-0.07	-8.69	13.7