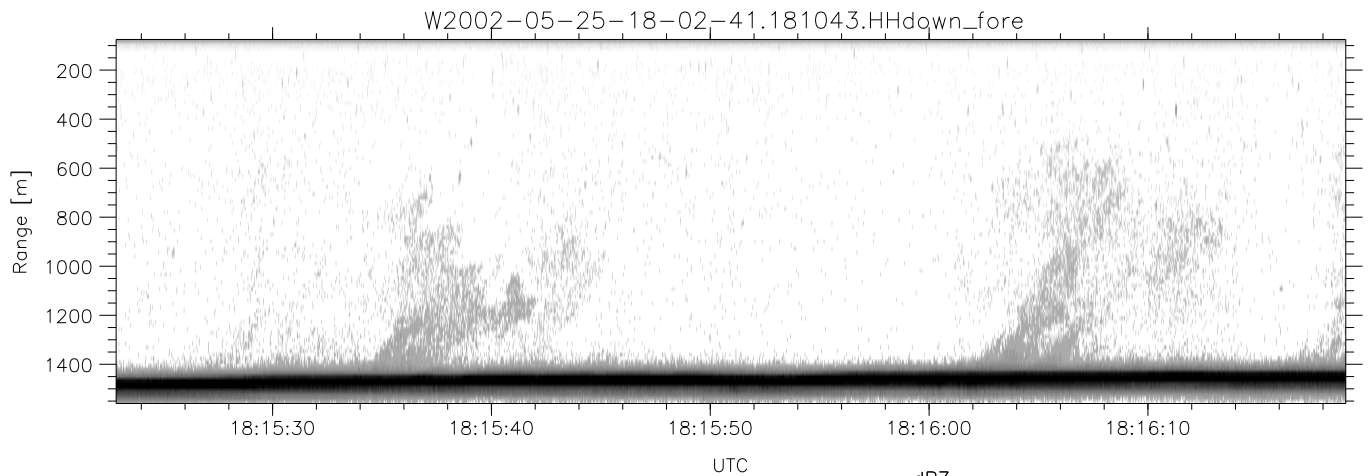
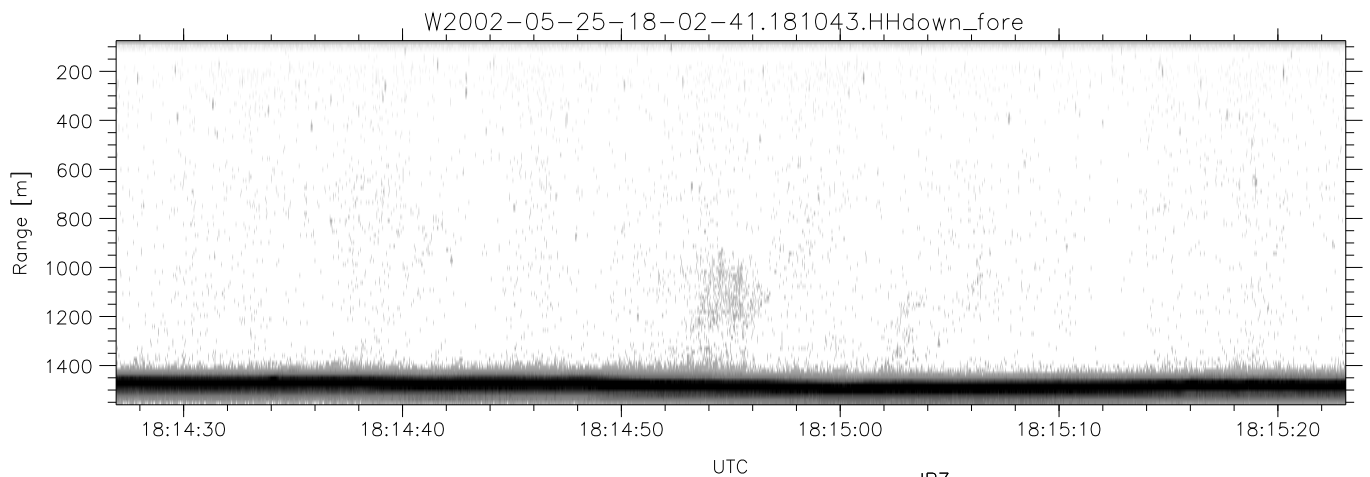
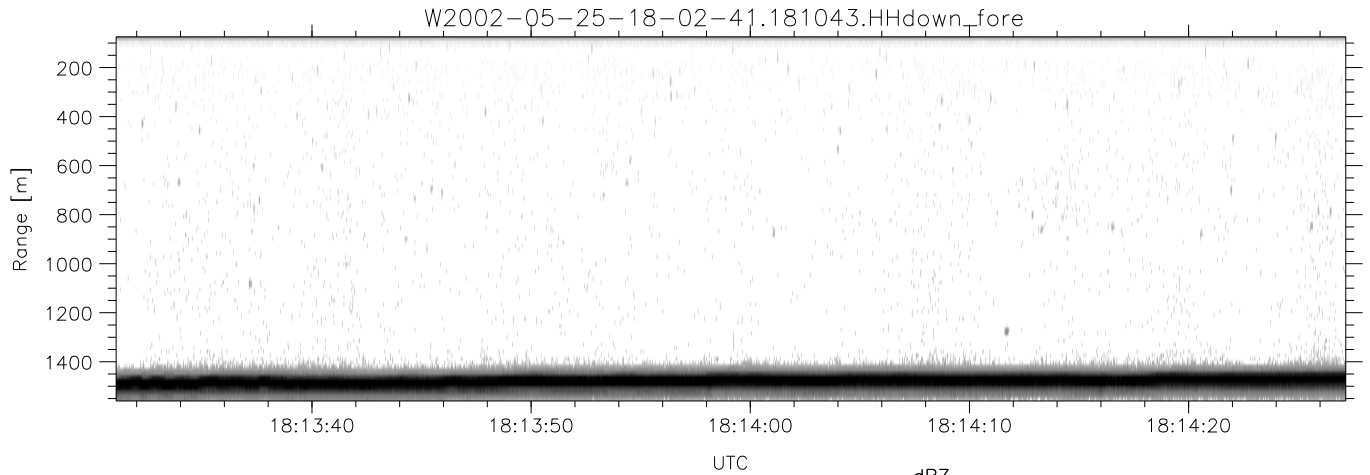


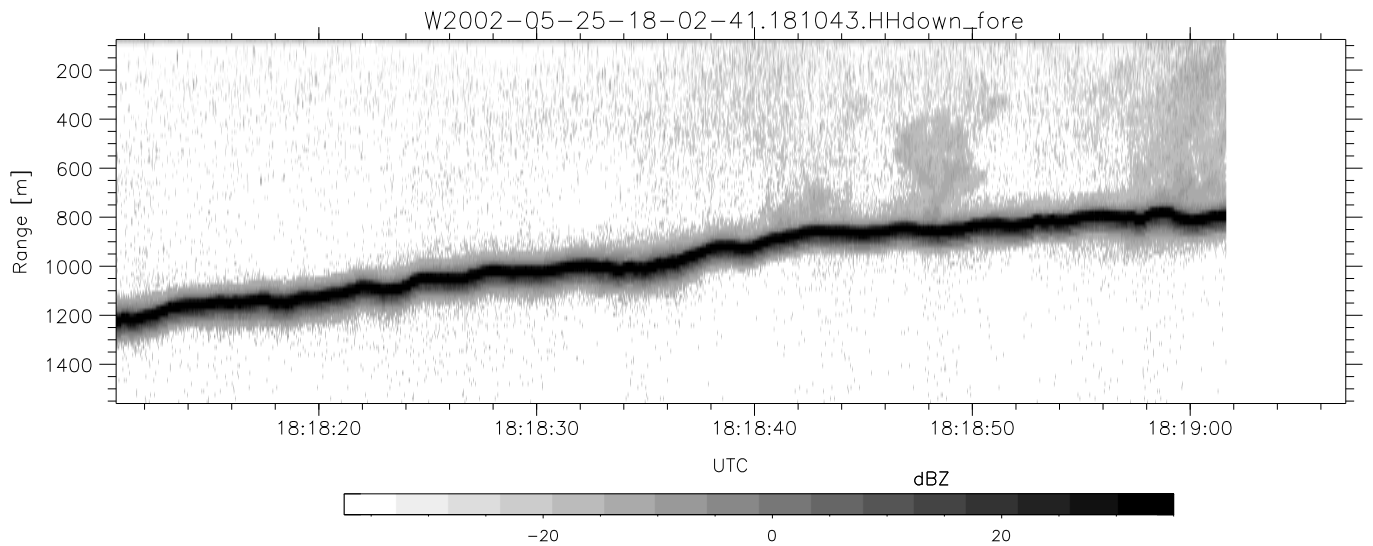
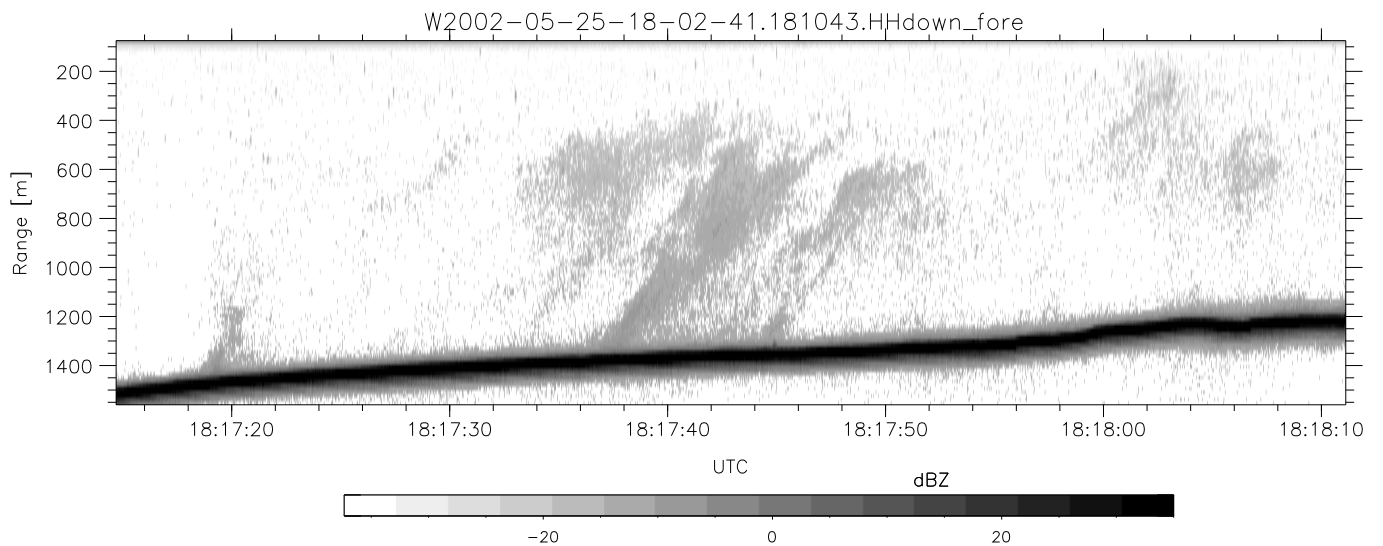
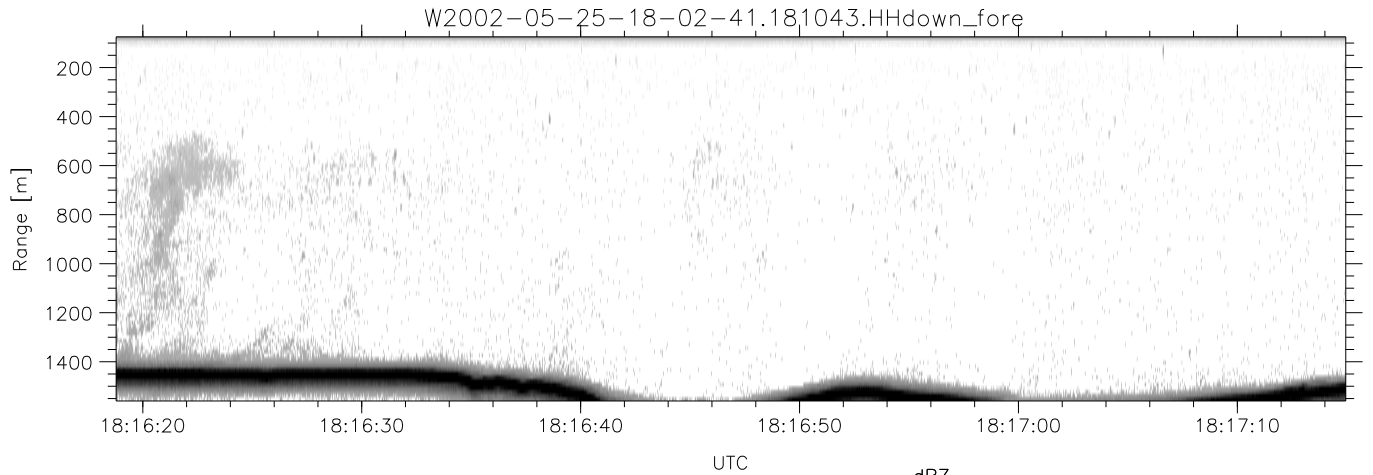
IHOP 2002 (dual-antenna config, modes 1,3,4,7) Data (cal: 55.0,50.0)

W2002-05-25-18-02-41 - PPMAG4	Min	Max	Mean	Std	Varc%	
IRIG:1,UTC: 18:02:25.67 to 18:34:34.50, Dur: 1929s	hhN (dB)	-66.61	-63.38	-64.94	-75.03	9.8
TimeLngth: 1928.83s, TimeInt: 30ms (33.2pps)	vvN (dB)	-66.88	-63.48	-65.01	-75.08	9.8
TimeCor=-13.0s, DSPDif(mn,mx,min):30,28,216	hhL (dB)	-22.36	-7.79	-9.86	-15.17	29.5
PPS(min,max,std): 29,36,2.03	vvL (dB)	-35.56	-12.83	-21.81	-22.55	84.3
Prof: 632 to 64695, NumProf(t/r): 64063/16567	ppN (m/s)	-12.44	12.48	0.01	4.15	
ProcTime/Recs: 18:10:43-18:19:01/16567-33133	ppT (m/s)	-98.26	98.57	0.07	32.75	
MxAcQtime: 33ms; DRate: 185.9KB/s; Flags: 0, 0, 0	hh/vv (dB)	-NaN	99.66	53.09	76.05	1974
Pulse: 275ns, IFilt: 5.0MHz; ppPol: HH HV VV	vh/hh (dB)	-NaN	-29.77	-48.04	-40.42	578.
TxPol: HHVV, PRF: 20 10 20 10 kHz	hv/vv (dB)	-NaN	-24.27	-51.86	-43.56	675.
Range: Delay 75m, Spacing 15m, Gates 100	hnjmp (dB)	-2.04	2.23	0.15	-8.46	13.8
Ave. Pulses: 84, Rng/Prof Aspect@90m/s: 5.5	vnjmp (dB)	-2.16	2.46	0.16	-8.39	13.9



IHOP 2002 (dual-antenna config, modes 1,3,4,7) Data (cal: 55.0,50.0)

W2002-05-25-18-02-41 - PPMAG4	Min	Max	Mean	Std	Varc%	
IRIG:1,UTC: 18:02:25.67 to 18:34:34.50, Dur: 1929s	hhN (dB)	-66.61	-63.38	-64.94	-75.03	9.8
TimeLngth: 1928.83s, TimeInt: 30ms (33.2pps)	vvN (dB)	-66.88	-63.48	-65.01	-75.08	9.8
TimeCor=-13.0s, DSPDif(mn,mx,min):30,28,216	hhL (dB)	-22.36	-7.79	-9.86	-15.17	29.5
PPS(min,max,std): 29,36,2.03	vvL (dB)	-35.56	-12.83	-21.81	-22.55	84.3
Prof: 632 to 64695, NumProf(t/r): 64063/16567	ppN (m/s)	-12.44	12.48	0.01	4.15	
ProcTime/Recs: 18:10:43-18:19:01/16567-33133	ppT (m/s)	-98.26	98.57	0.07	32.75	
MxAcQtime: 33ms; DRate: 185.9KB/s; Flags: 0, 0, 0	hh/vv (dB)	-NaN	99.66	53.09	76.05	1974
Pulse: 275ns, IFilt: 5.0MHz; ppPol: HH HV VV	vh/hh (dB)	-NaN	-29.77	-48.04	-40.42	578.
TxPol: HHVV, PRF: 20 10 20 10 kHz	hv/vv (dB)	-NaN	-24.27	-51.86	-43.56	675.
Range: Delay 75m, Spacing 15m, Gates 100	hn/jmp (dB)	-2.04	2.23	0.15	-8.46	13.8
Ave. Pulses: 84, Rng/Prof Aspect@90m/s: 5.5	vn/jmp (dB)	-2.16	2.46	0.16	-8.39	13.9



IHOP 2002 (dual-antenna config, modes 1,3,4,7) Data (cal: 55.0,50.0)

W2002-05-25-18-02-41 - PPMAG4  
 IRIG:1,UTC: 18:02:25.67 to 18:34:34.50, Dur: 1929s  
 TimeLngth: 1928.83s, TimeInt: 30ms (33.2pps)  
 TimeCor=-13.0s, DSPDif(mn,mx,min):30,28,216  
 PPS(min,max,std): 29,36,2.03  
 Prof: 632 to 64695, NumProf(t/r): 64063/16567  
 ProcTime/Recs: 18:10:43-18:19:01/16567-33133  
 MxACQtime: 33ms; DRate: 185.9KB/s; Flags: 0, 0, 0  
 Pulse: 275ns, IFfilt: 5.0MHz; ppPol: HH HV VV  
 TxPol: HHVV, PRF: 20 10 20 10 kHz  
 Range: Delay 75m, Spacing 15m, Gates 100  
 Ave. Pulses: 84, Rng/Prof Aspect@90m/s: 5.5

	Min	Max	Mean	Std	Varc%
hhN(dB)	-66.61	-63.38	-64.94	-75.03	9.8
vvN(dB)	-66.88	-63.48	-65.01	-75.08	9.8
hhL(dB)	-22.36	-7.79	-9.86	-15.17	29.5
vvL(dB)	-35.56	-12.83	-21.81	-22.55	84.3
ppN(m/s)	-12.44	12.48	0.01	4.15	
ppT(m/s)	-98.26	98.57	0.07	32.75	
hh/vv(dB)	-NaN	99.66	53.09	76.05	1974
vh/hh(dB)	-NaN	-29.77	-48.04	-40.42	578.
hv/vv(dB)	-NaN	-24.27	-51.86	-43.56	675.
hnjmp(dB)	-2.04	2.23	0.15	-8.46	13.8
vnjmp(dB)	-2.16	2.46	0.16	-8.39	13.9