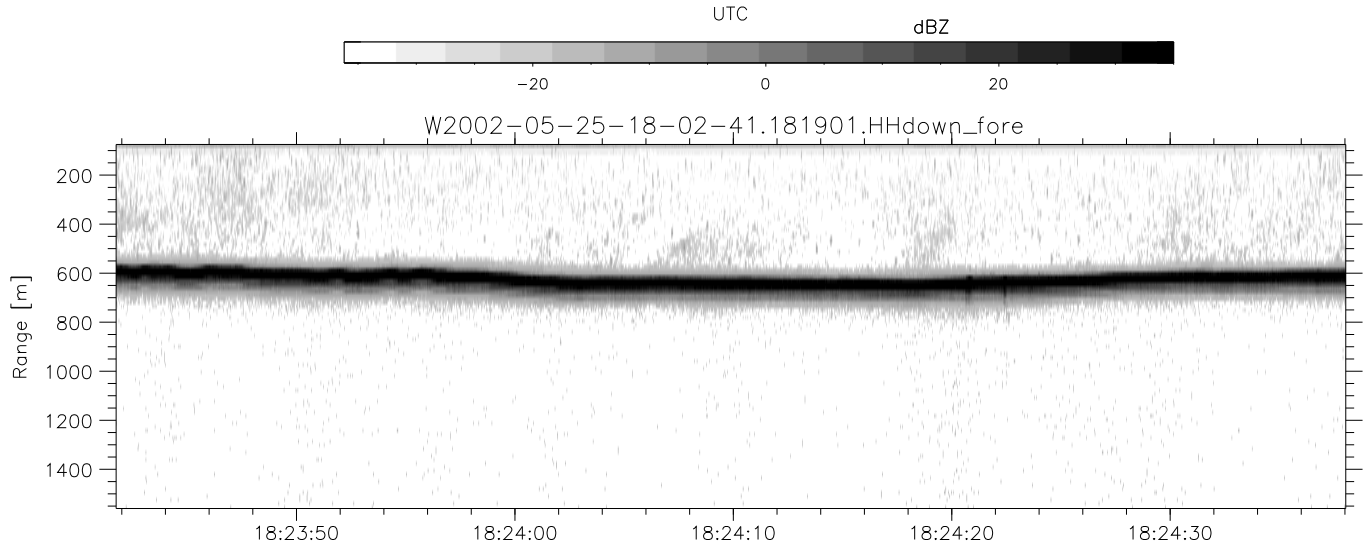
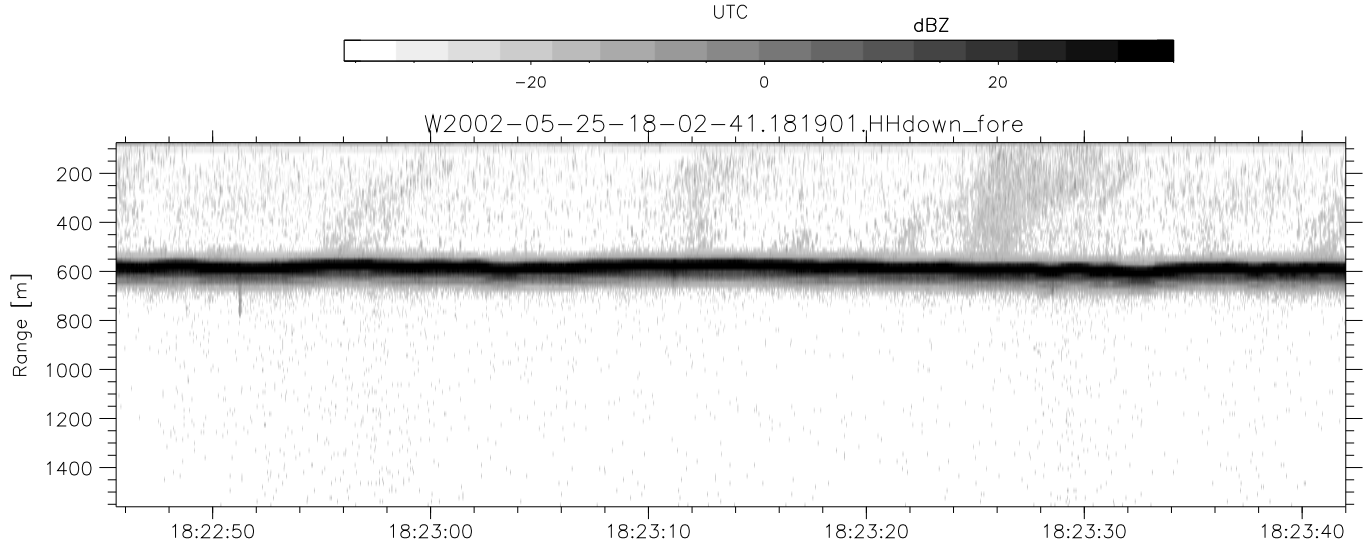
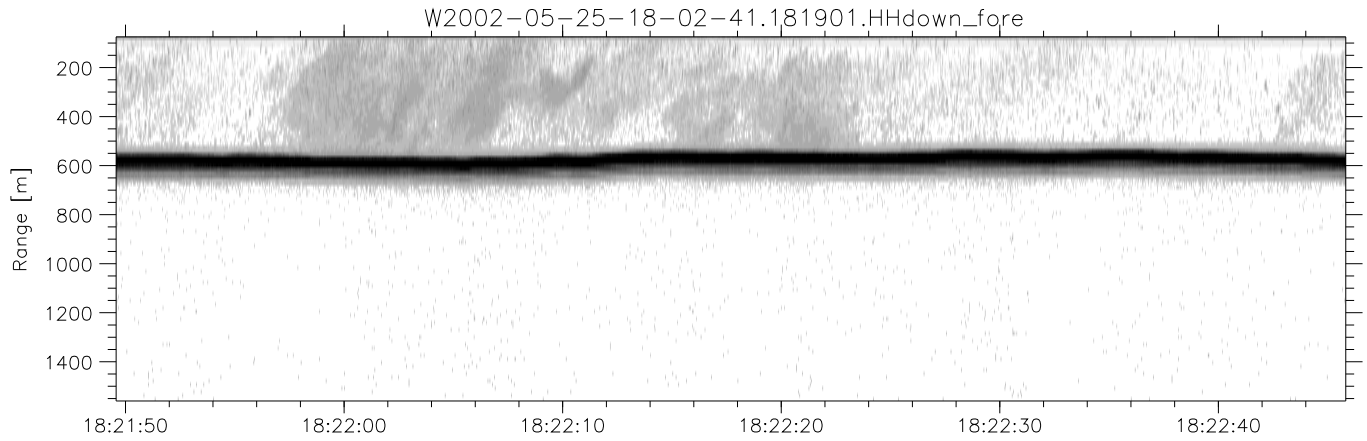


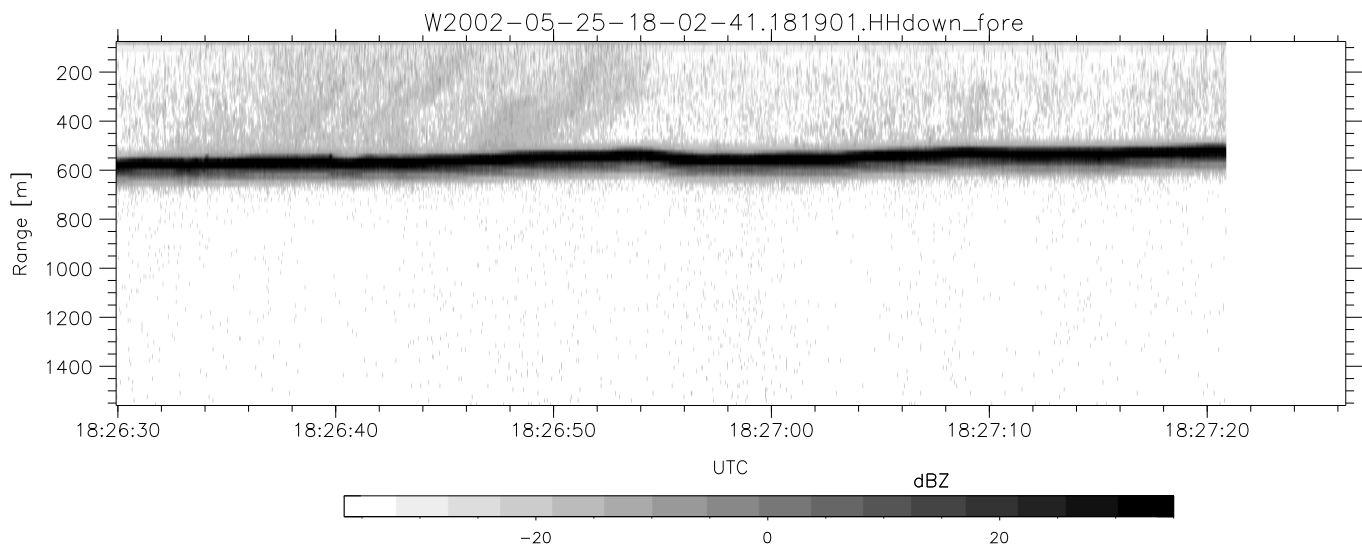
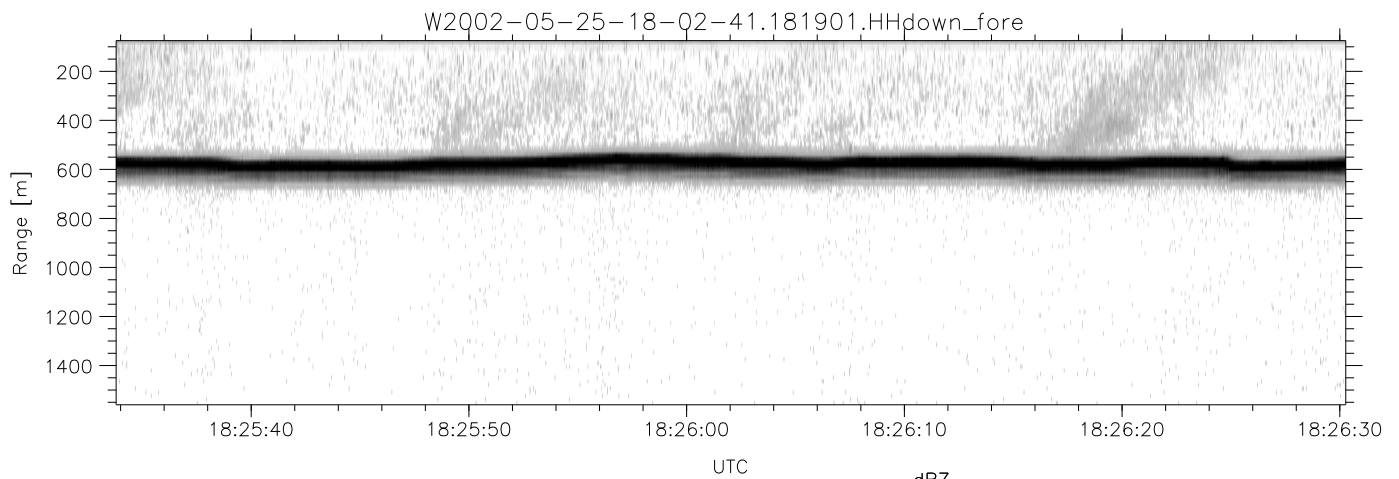
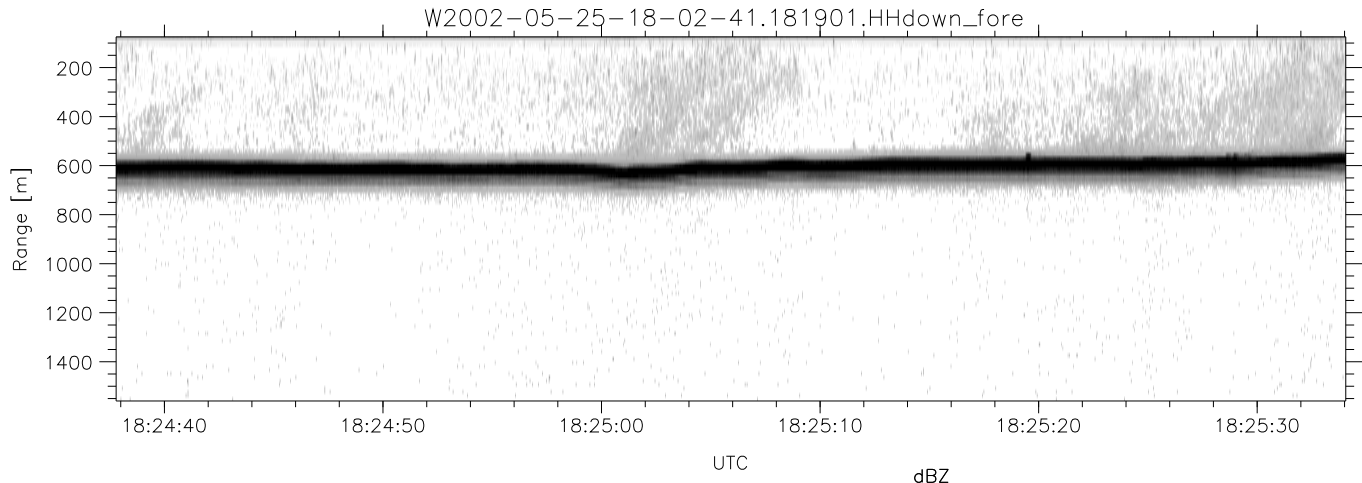
IHOP 2002 (dual-antenna config, modes 1,3,4,7) Data (cal: 55.0,50.0)

W2002-05-25-18-02-41 - PPMAG4	Min	Max	Mean	Std	Varc%
IRIG:1,UTC: 18:02:25.67 to 18:34:34.50, Dur: 1929s	-66.75	-63.54	-64.95	-75.07	9.7
TimeLngth: 1928.83s, TimeInt: 30ms (33.2pps)	-67.10	-63.33	-65.00	-75.08	9.8
TimeCor=-13.0s, DSPDif(mn,mx,min):30,28,236	-21.30	-9.95	-13.00	-18.21	30.1
PPS(min,max,std): 28,36,1.97	-21.14	-11.12	-13.47	-20.11	21.6
Prof: 632 to 64695, NumProf(t/r): 64063/16567	ppN(m/s)	-12.19	12.63	-0.06	4.16
ProcTime/Recs: 18:19:01-18:27:20/33134-49700	ppT(m/s)	-96.27	99.75	-0.51	32.84
MxAcQtime: 33ms; DRate: 185.9KB/s; Flags: 0, 0, 0	hh/vv(dB)	-NaN	104.09	53.65	78.44 3011
Pulse: 275ns, IFilt: 5.0MHz; ppPol: HH HV VV	vh/hh(dB)	-NaN	-16.42	-44.84	-38.74 407.
TxPol: HHVV, PRF: 20 10 20 10 kHz	hv/vv(dB)	-NaN	-18.95	-42.74	-35.25 561.
Range: Delay 75m, Spacing 15m, Gates 100	hnjmp(dB)	-2.20	2.08	-0.08	-8.71 13.7
Ave. Pulses: 84, Rng/Prof Aspect@90m/s: 5.5	vnjmp(dB)	-3.12	1.97	-0.07	-8.69 13.7



IHOP 2002 (dual-antenna config, modes 1,3,4,7) Data (cal: 55.0,50.0)

W2002-05-25-18-02-41 - PPMAG4						
IRIG:1,UTC: 18:02:25.67 to 18:34:34.50, Dur: 1929s	hhN (dB)	Min	Max	Mean	Std	Varc%
TimeLngth: 1928.83s, TimeInt: 30ms (33.2pps)	vvN (dB)	-66.75	-63.54	-64.95	-75.07	9.7
TimeCor=-13.0s, DSPDif(mn,mx,min):30,28,236	hhL (dB)	-67.10	-63.33	-65.00	-75.08	9.8
PPS(min,max,std): 28,36,1.97	vvL (dB)	-21.30	-9.95	-13.00	-18.21	30.1
Prof: 632 to 64695, NumProf(t/r): 64063/16567	ppN (m/s)	-21.14	-11.12	-13.47	-20.11	21.6
ProcTime/Recs: 18:19:01-18:27:20/33134-49700	ppT (m/s)	-12.19	12.63	-0.06	4.16	
MxAcQtime: 33ms; DRate: 185.9KB/s; Flags: 0, 0, 0	hh/vv (dB)	-96.27	99.75	-0.51	32.84	
Pulse: 275ns, IFilt: 5.0MHz; ppPol: HH HV VV	vh/vh (dB)	-NaN	104.09	53.65	78.44	3011
TxPol: HHVV, PRF: 20 10 20 10 kHz	hv/hv (dB)	-NaN	-16.42	-44.84	-38.74	407.
Range: Delay 75m, Spacing 15m, Gates 100	hn/jmp (dB)	-NaN	-18.95	-42.74	-35.25	561.
Ave. Pulses: 84, Rng/Prof Aspect@90m/s: 5.5	hn/jmp (dB)	-2.20	2.08	-0.08	-8.71	13.7
	vn/jmp (dB)	-3.12	1.97	-0.07	-8.69	13.7



IHOP 2002 (dual-antenna config, modes 1,3,4,7) Data (cal: 55.0,50.0)

W2002-05-25-18-02-41 - PPMAG4						
IRIG:1,UTC: 18:02:25.67 to 18:34:34.50, Dur: 1929s	hhN (dB)	Min	Max	Mean	Std	Varc%
TimeLngth: 1928.83s, TimeInt: 30ms (33.2pps)	vvN (dB)	-66.75	-63.54	-64.95	-75.07	9.7
TimeCor=-13.0s, DSPDif(mn,mx,min):30,28,236	hhL (dB)	-67.10	-63.33	-65.00	-75.08	9.8
PPS(min,max,std): 28,36,1.97	vvL (dB)	-21.30	-9.95	-13.00	-18.21	30.1
Prof: 632 to 64695, NumProf(t/r): 64063/16567	ppN (m/s)	-21.14	-11.12	-13.47	-20.11	21.6
ProcTime/Recs: 18:19:01-18:27:20/33134-49700	ppT (m/s)	-12.19	12.63	-0.06	4.16	
MxAcQtime: 33ms; DRate: 185.9KB/s; Flags: 0, 0, 0	hh/vv (dB)	-96.27	99.75	-0.51	32.84	
Pulse: 275ns, IFilt: 5.0MHz; ppPol: HH HV VV	vh/hh (dB)	-NaN	104.09	53.65	78.44	3011
TxPol: HHVV, PRF: 20 10 20 10 kHz	hv/vv (dB)	-NaN	-16.42	-44.84	-38.74	407.
Range: Delay 75m, Spacing 15m, Gates 100	hn/jmp (dB)	-NaN	-18.95	-42.74	-35.25	561.
Ave. Pulses: 84, Rng/Prof Aspect@90m/s: 5.5	hn/jmp (dB)	-2.20	2.08	-0.08	-8.71	13.7
	vn/jmp (dB)	-3.12	1.97	-0.07	-8.69	13.7