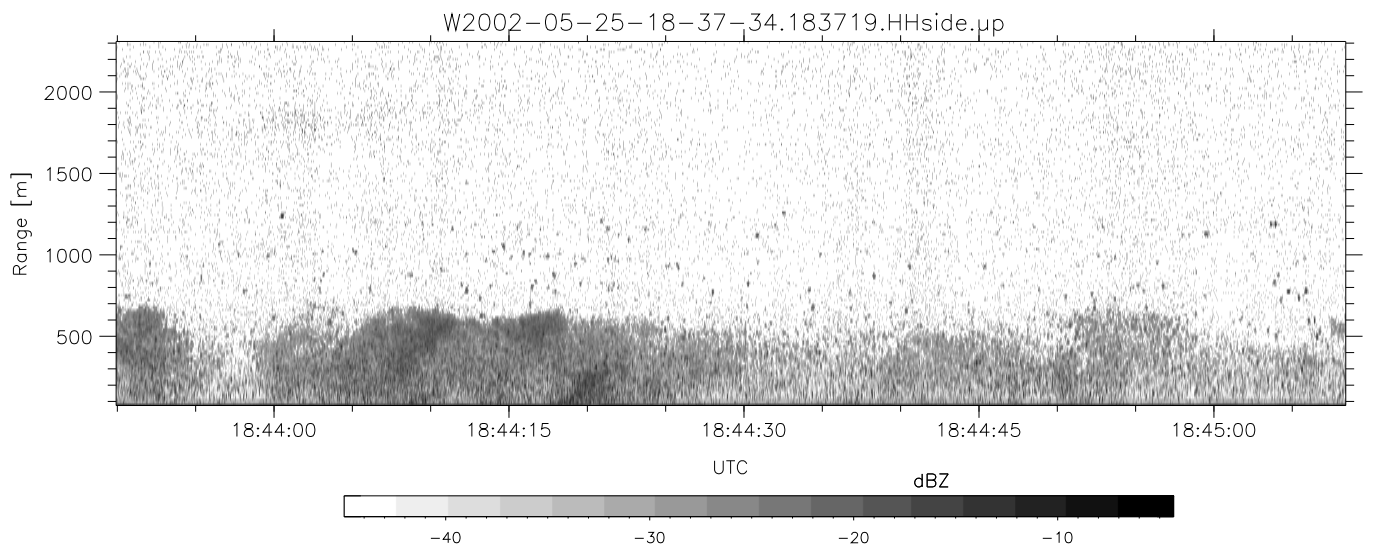
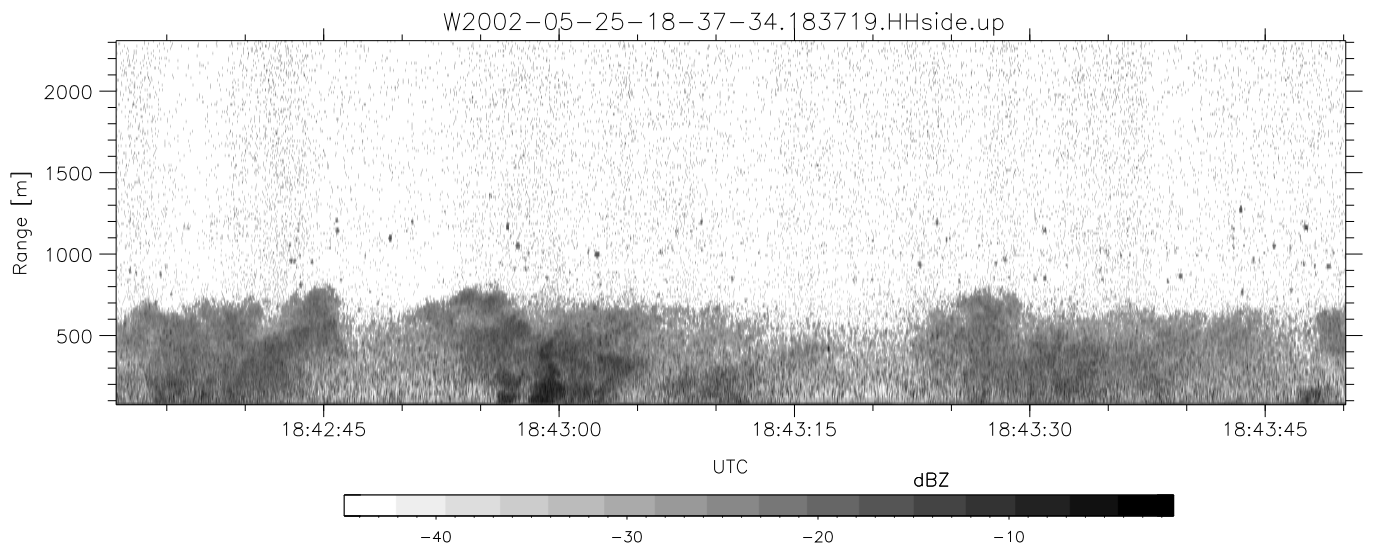
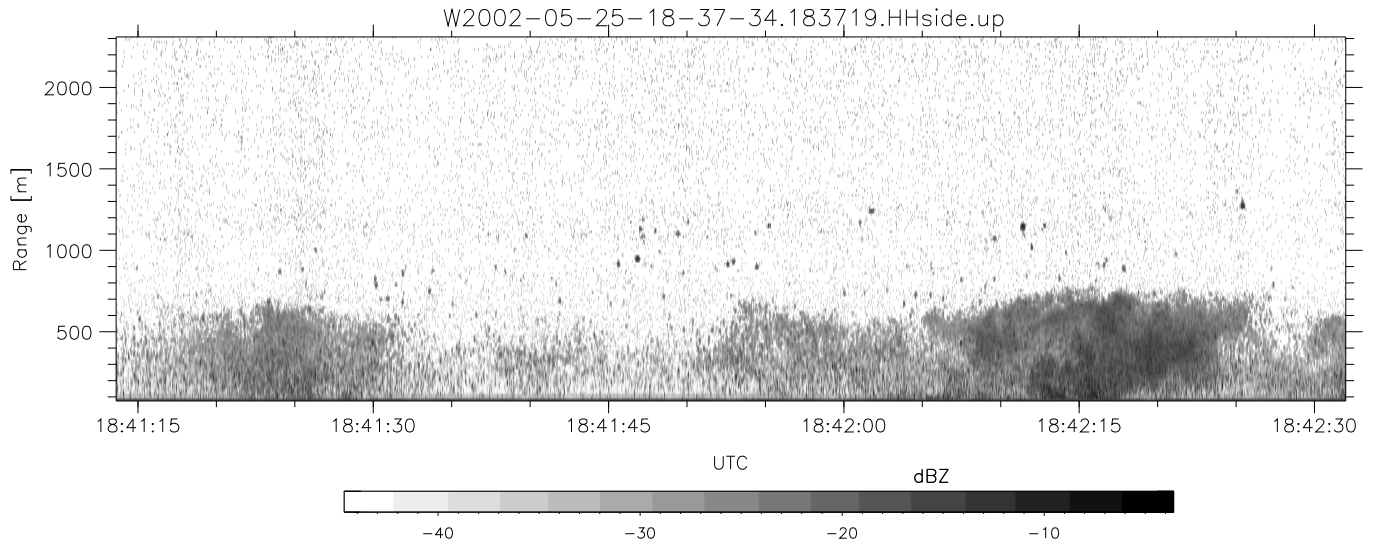


IHOP 2002 (dual-antenna config, modes 1,3,4,7) Data (cal: 49.0,50.0)

W2002-05-25-18-37-34 - SPPMAG
 IRIG:1,UTC: 18:37:19.18 to 20:21:21.98, Dur: 6242s
 TimeLngth: 6242.80s, TimeInt: 27ms (35.9pps)
 TimeCor=-13.0s, DSPDif(mn,mx,min):26,20,309
 PPS(min,max,std): 18,42,3.11
 Prof: 1571 to 225383, NumProf(t/r): 223812/26357
 ProcTime/Recs: 18:37:19-18:48:42/0-26356
 MxACQtime: 17ms; DRate: 85.8KB/s; Flags: 0, 0, 0
 Pulse: 275ns, IFfilt: 5.0MHz; ppPol: HH
 TxPol: H, PRF: 20 kHz
 Range: Delay 75m, Spacing 15m, Gates 150
 Ave. Pulses: 348, Rng/Prof Aspect@90m/s: 6.0

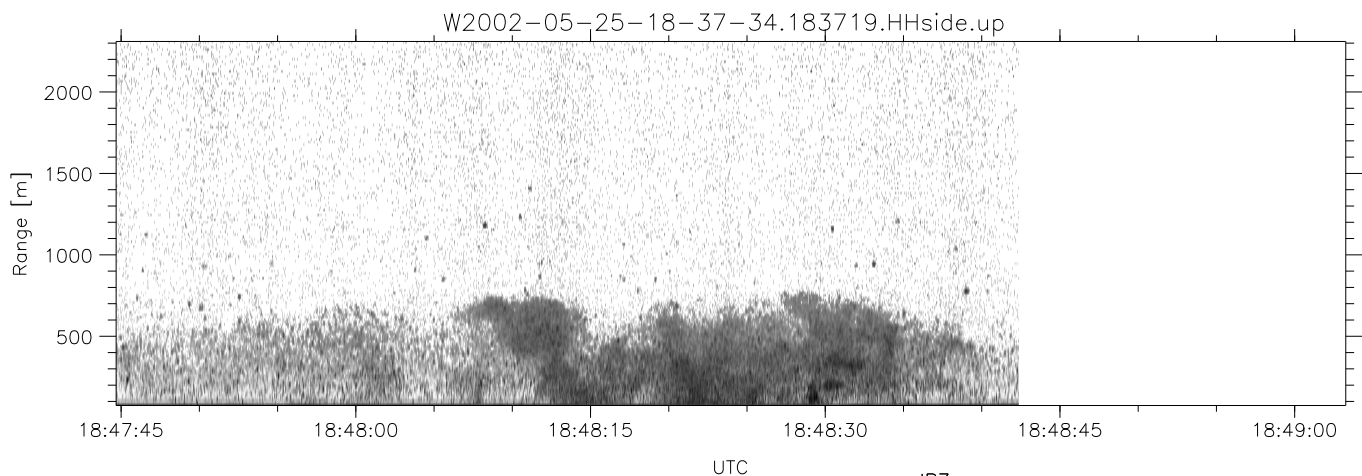
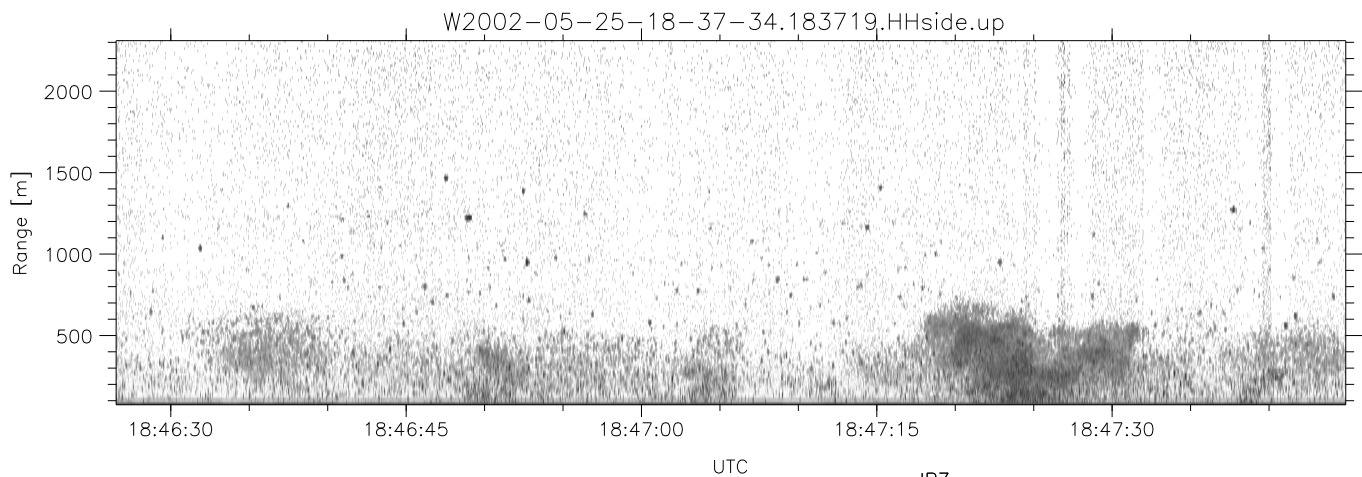
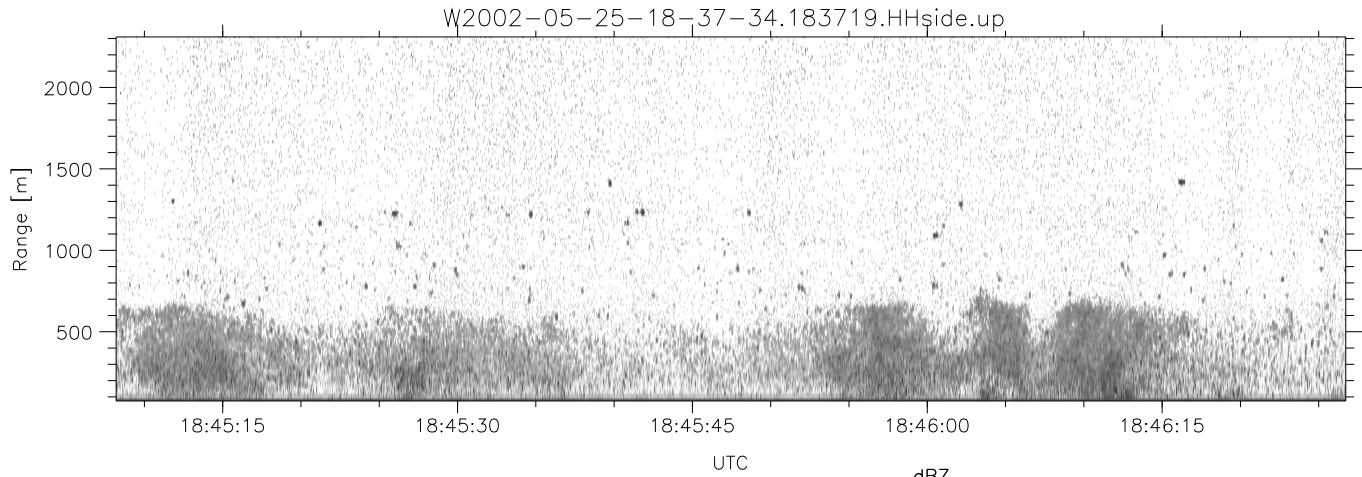
	Min	Max	Mean	Std	Varc%
hhN(dB)	-66.08	-64.15	-65.26	-78.24	5.0
vvN(dB)	-65.88	-64.08	-65.02	-78.07	5.0
hhL(dB)	-15.61	-6.80	-10.11	-15.97	25.9
vhL(dB)	-18.71	-8.20	-11.21	-16.62	28.8
ppN(m/s)	-15.80	15.80	0.06	9.05	
ppT(m/s)	-0.03	0.02	-0.00	0.01	
vh/hh(dB)	-NaN	-0.75	-20.17	-12.61	570.
hn_jmp(dB)	-0.98	1.35	0.12	-11.58	6.7
vn_jmp(dB)	-1.13	1.28	0.12	-11.57	6.8



IHOP 2002 (dual-antenna config, modes 1,3,4,7) Data (cal: 49.0,50.0)

W2002-05-25-18-37-34 - SPPMAG
 IRIG:1,UTC: 18:37:19.18 to 20:21:21.98, Dur: 6242s
 TimeLngth: 6242.80s, TimeInt: 27ms (35.9pps)
 TimeCor=-13.0s, DSPDif(mn,mx,min):26,20,309
 PPS(min,max,std): 18,42,3.11
 Prof: 1571 to 225383, NumProf(t/r): 223812/26357
 ProcTime/Recs: 18:37:19-18:48:42/0-26356
 MxACQtime: 17ms; DRate: 85.8KB/s; Flags: 0, 0, 0
 Pulse: 275ns, IFfilt: 5.0MHz; ppPol: HH
 TxPol: H, PRF: 20 kHz
 Range: Delay 75m, Spacing 15m, Gates 150
 Ave. Pulses: 348, Rng/Prof Aspect@90m/s: 6.0

	Min	Max	Mean	Std	Varc%
hhN(dB)	-66.08	-64.15	-65.26	-78.24	5.0
vvN(dB)	-65.88	-64.08	-65.02	-78.07	5.0
hhL(dB)	-15.61	-6.80	-10.11	-15.97	25.9
vhL(dB)	-18.71	-8.20	-11.21	-16.62	28.8
ppN(m/s)	-15.80	15.80	0.06	9.05	
ppT(m/s)	-0.03	0.02	-0.00	0.01	
vh/hh(dB)	-NaN	-0.75	-20.17	-12.61	570.
hnjmp(dB)	-0.98	1.35	0.12	-11.58	6.7
vnjmp(dB)	-1.13	1.28	0.12	-11.57	6.8



IHOP 2002 (dual-antenna config, modes 1,3,4,7) Data (cal: 49.0,50.0)

W2002-05-25-18-37-34 - SPPMAG
 IRIG:1,UTC: 18:37:19.18 to 20:21:21.98, Dur: 6242s
 TimeLngth: 6242.80s, TimeInt: 27ms (35.9pps)
 TimeCor=-13.0s, DSPDif(mn,mx,min):26,20,309
 PPS(min,max,std): 18,42,3.11
 Prof: 1571 to 225383, NumProf(t/r): 223812/26357
 ProcTime/Recs: 18:37:19-18:48:42/0-26356
 MxACQtime: 17ms; DRate: 85.8KB/s; Flags: 0, 0, 0
 Pulse: 275ns, IFfilt: 5.0MHz; ppPol: HH
 TxPol: H, PRF: 20 kHz
 Range: Delay 75m, Spacing 15m, Gates 150
 Ave. Pulses: 348, Rng/Prof Aspect@90m/s: 6.0

	Min	Max	Mean	Std	Varc%
hhN(dB)	-66.08	-64.15	-65.26	-78.24	5.0
vvN(dB)	-65.88	-64.08	-65.02	-78.07	5.0
hhL(dB)	-15.61	-6.80	-10.11	-15.97	25.9
vhL(dB)	-18.71	-8.20	-11.21	-16.62	28.8
ppN(m/s)	-15.80	15.80	0.06	9.05	
ppT(m/s)	-0.03	0.02	-0.00	0.01	
vh/hh(dB)	-NaN	-0.75	-20.17	-12.61	570.
hnjmp(dB)	-0.98	1.35	0.12	-11.58	6.7
vnjmp(dB)	-1.13	1.28	0.12	-11.57	6.8